



**50-376**  
Way oil with brush



**50-778**  
Performance plus inserts



**37-740**  
T8 Tip Screw Wrench



**50-744**  
Vented disc chip deflector



**50-754**  
Solid disc chip deflector



**50-4744**  
Band Silencer - drum



**37-4065**  
3mm gib screw wrench



**50-4010**  
Double Taper Spacer (33.1-42.6mm)



**50-4011 / QTY. 2**  
Double Taper Spacers (33.5-44mm)



**50-4012**  
Double Taper Spacer (43.3-52.9mm)



**50-4013**  
Double Taper Spacer (53.1-61.8mm)



**50-4014**  
Double Taper Spacer (62.3-71.9mm)



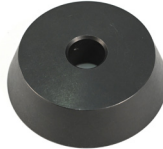
**50-4015**  
Small Cone (62mm)



**50-4016**  
Medium Cone (83mm)



**50-4017**  
Large Cone (99mm)



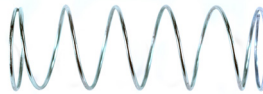
**50-4035**  
Extra Large Cone (115mm)



**50-4018**  
1" Arbor Thread Spacer



**50-4019 / 50-4020**  
Matched concave/convex spherical washer set



**50-4021**  
Standard Spring



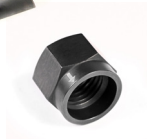
**50-4022**  
5.75" Bell Clamps



**50-4023**  
4.00" Bell Clamps



**50-4025**  
Standard 1" Arbor



**36-4020**  
M24x2.0-LH threaded arbor nut



**50-4066**  
35mm Arbor nut wrench



**36-4005**  
Draw bar nut M12



**37-376**  
Chip Brush



**37-377**  
Match Mark Crayon



**37-4064**  
8/10mm open end wrench



**37-1900**  
Safety glasses



**50-4745**  
Bolt on safety shield for B17. Attaches to existing threaded hole on top left of B17.



**50-4148**  
Safety manual



**50-4149**  
Technical manual



**50-4801**  
Quick-Tech Sheet



**50-729**  
Brake Spec Guide

## B17 Optional Upgrades



**37-996**  
Hub Cleaning Tool



**50-4460k**  
Truck Adapter kit for 1" arbor  
**Kit includes:**  
5.5" cone, 6.5" cups, and a HD spring.



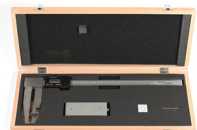
**50-2680**  
Brake Service Starter Tool Kit  
**Kit Includes:** All the basics to get started rotor matching"



**50-4260**  
1 7/8ths HD Arbor  
**Kit Includes:**  
5.5" cone, 6.5" cups, spring, wrench, and spacers



**50-4250**  
Quick Chuck Kit  
**Kit Includes:**  
1x Quick chuck w/ truck jaws  
1x Quick chuck w/car jaws  
1x 4.75" backing plate  
1x 5" backing plate  
1x 6.25" backing plate  
1x 7.25" backing plate  
2x chuck keys



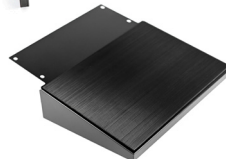
**50-901**  
Brake Drum Micrometer



**50-4280**  
Dust Containment System  
Fits Pro-Cut B17 with mobile cart option only. Includes large removable chip tray, vacuum port, and side and top doors with viewing windows. Ships by truck freight. Not compatible with 50-4260..



**50-902**  
Brake Disc Micrometer



**50-4720**  
Left Side Work Table