

SINGLE STATION MAINS KIT (LOW PRESSURE)

AT00-006

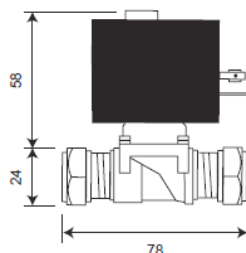
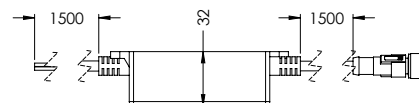
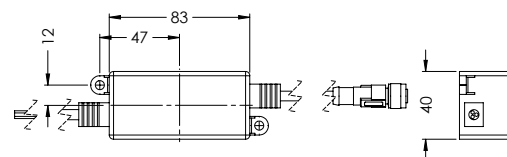
Automatic taps single station mains kit for standard pressure systems (0.5-1 BAR). Kit includes mains PSU and 6V DC Solenoid valve with compression fittings for 15mm pipe, supplied with connecting Y-splitter lead.

PRODUCT NUMBER

AT00-006

TECHNICAL DATA

Gross weight	0.95kg
Mains PSU	
PSU Cable length	1.5m (each side 3m in total)
Input	100 - 240v ~ 50/60Hz 0.3A
Output	6v 2A
IP rating	67
Gross weight	0.3 kg
Mains cable length	1.5m
Low voltage cable length	1.5m
Solenoid valve	
Material	ABS / brass
O-ring / washers material	EDPM
Fitting	Ø½" BSP



ALL DIMENSIONS IN MM

Last updated:
2018-09-26, Dart Valley Systems