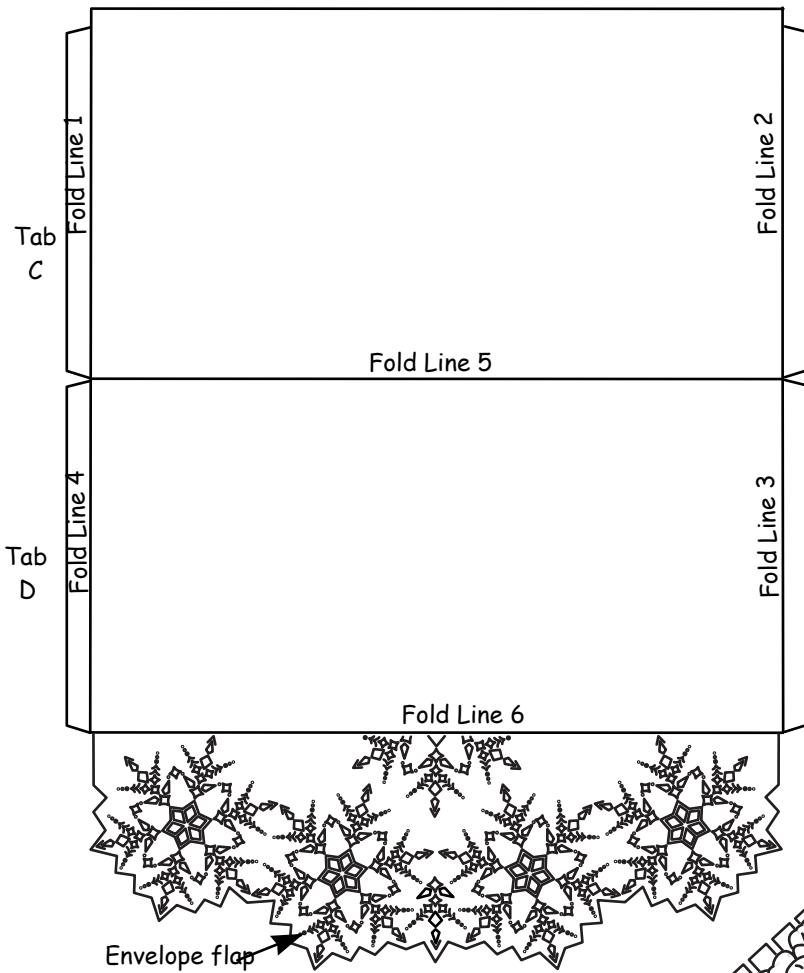


# Linda Williams - It's A Wrap - Envelope Assembly and Inspiration Sheet



Emboss the envelope on the Groovi plate, it is always best to emboss the fold lines very gently with the number 2 Groovi embossing tool.

Fold tabs A,B,C and D inwards towards the inside of your envelope.

Also crease at fold lines 5 and 6 and then open the envelope out again.

Stick a strip of narrow, high-tack, double-sided adhesive tape along tabs A and C, making sure to line up the straight edges of the folds carefully.

Stick tab A to tab B, and then tab C to tab D.

Fold the decorative envelope flap over the open end of the envelope.

You can interchange the envelope flaps by embossing the two rectangles and tabs first and then moving your parchment over the plate to position it over your chosen decorative envelope flap.

There are five to choose from, creating numerous possibilities.

