



## Migrating Custom Applications Options and Tools with Migrate7™ Software



# TRANXITION

## Introduction

The Tranxition™ architecture separates the management of settings and data into three distinct components:

- a) A Core Engine that interacts with the operating system and applications to identify, gather and store settings and data.
- b) Defined “settings maps” or “content”, which is stored in binary files. This content instructs the engine as to which settings and data to gather and manage, where to locate them, how to modify or transform them and how to restore or inject them.
- c) A visual or command line interface that drives and manages the overall process.

Migrate7™ supports the management of data and settings for a number of popular applications “out of the box.” For those applications, all settings and data are pre-defined and Migrate7 needs only be configured as to whether to include or exclude the application or data set in the extraction or injection process.

Enterprise customers with in-house or custom applications that store a significant amount of data and/or settings locally might wish to migrate using Migrate7, or they may use third-party applications not widely used that they would like to migrate. In either of these cases Tranxition provides a number of methods to include these applications in Migrate7.

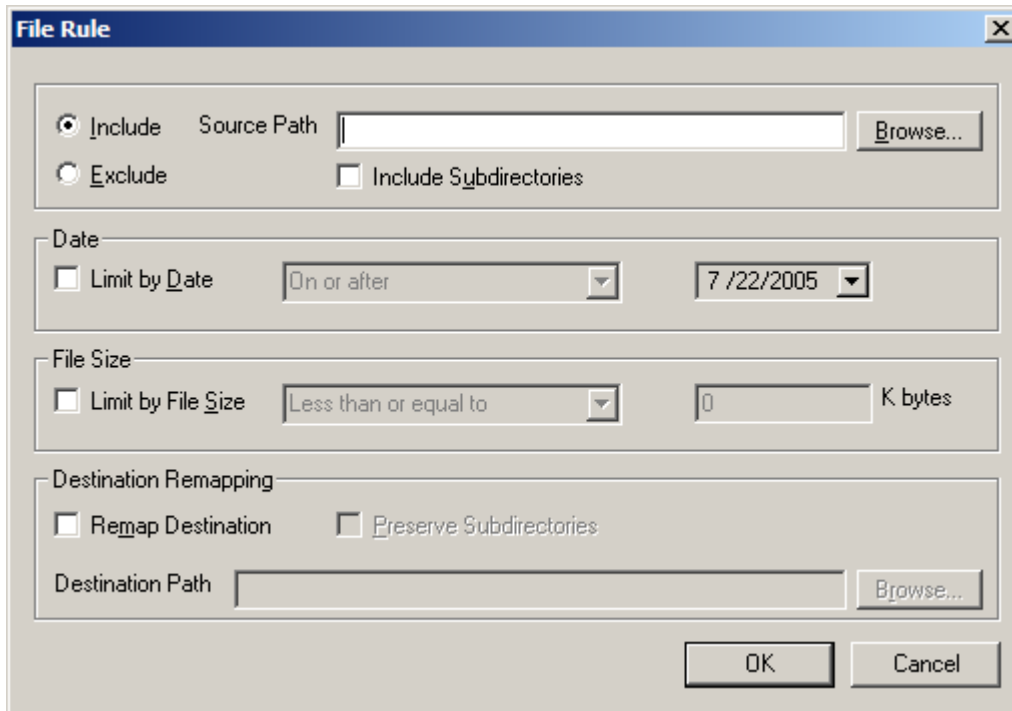
## Using Migrate7 with Custom Application Data and Settings

File and registry rules are created by an administrator for a specific project or environment and stored as templates. Standard rule sets can be stored and assigned to any migration.

### File Rules

File Rules are a sophisticated mechanism for defining file types to be located and managed/migrated. File Rules define methods for including/excluding files and directories based on extension, size, date and other attributes as well as tokenized remapping of files onto the new system using standard Windows tokens.

# TRANXITION



The File Rule dialog box is used to configure file inclusion/exclusion rules. It features several sections: 'Include/Exclude' with radio buttons and a 'Source Path' field; 'Date' with a 'Limit by Date' checkbox, a date range dropdown, and a date field; 'File Size' with a 'Limit by File Size' checkbox, a size range dropdown, and a size field; and 'Destination Remapping' with checkboxes for 'Remap Destination' and 'Preserve Subdirectories', and a 'Destination Path' field. 'OK' and 'Cancel' buttons are at the bottom right.

**File Rule**

☒ Include    Source Path

☐ Exclude    ☐ Include Subdirectories

**Date**

☐ Limit by Date    On or after    7 / 22 / 2005

**File Size**

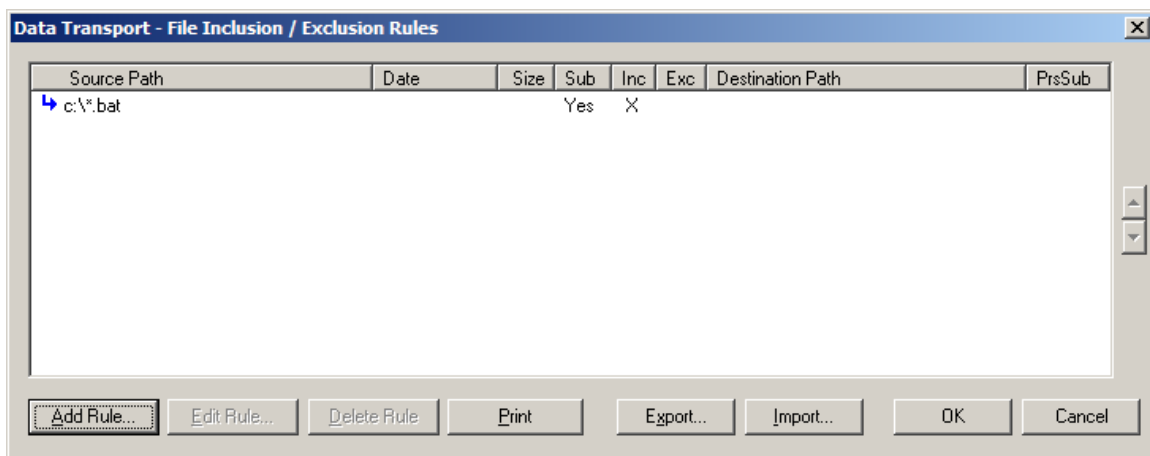
☐ Limit by File Size    Less than or equal to    0 K bytes

**Destination Remapping**

☐ Remap Destination    ☐ Preserve Subdirectories

Destination Path

File Rules also allow inclusion/exclusion of specific files.



The Data Transport - File Inclusion / Exclusion Rules dialog box displays a table of rules. The table has columns for Source Path, Date, Size, Sub, Inc, Exc, Destination Path, and PrsSub. A single rule is listed: c:\\*.bat, with Sub set to Yes and Inc set to X. The dialog includes buttons for Add Rule..., Edit Rule..., Delete Rule, Print, Export..., Import..., OK, and Cancel.

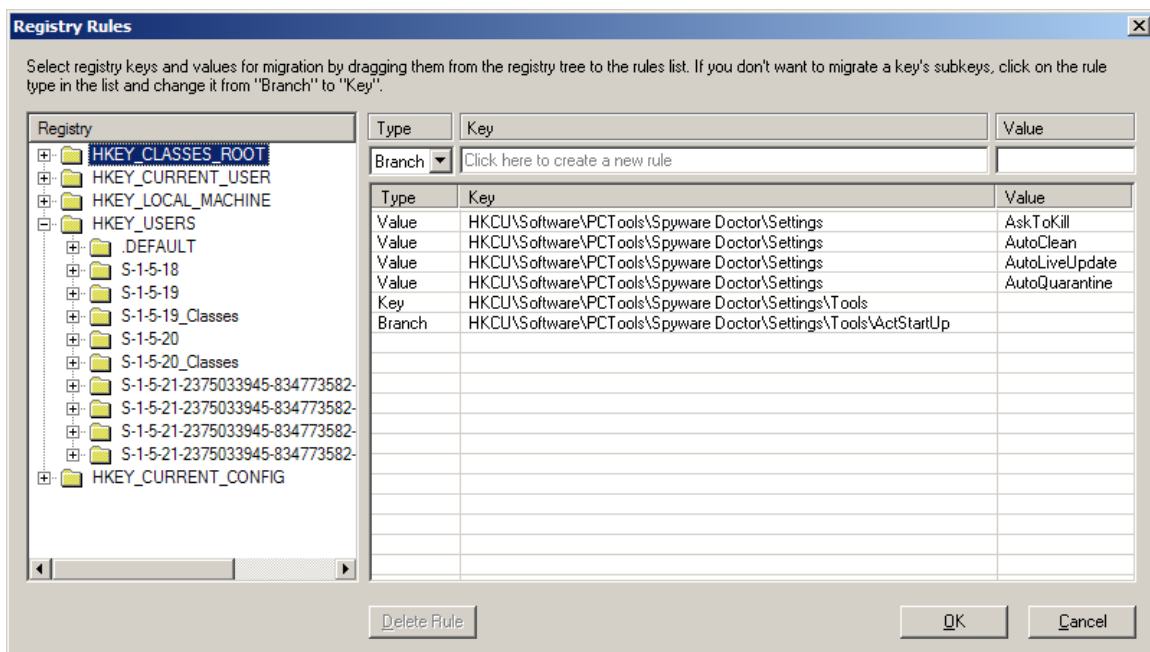
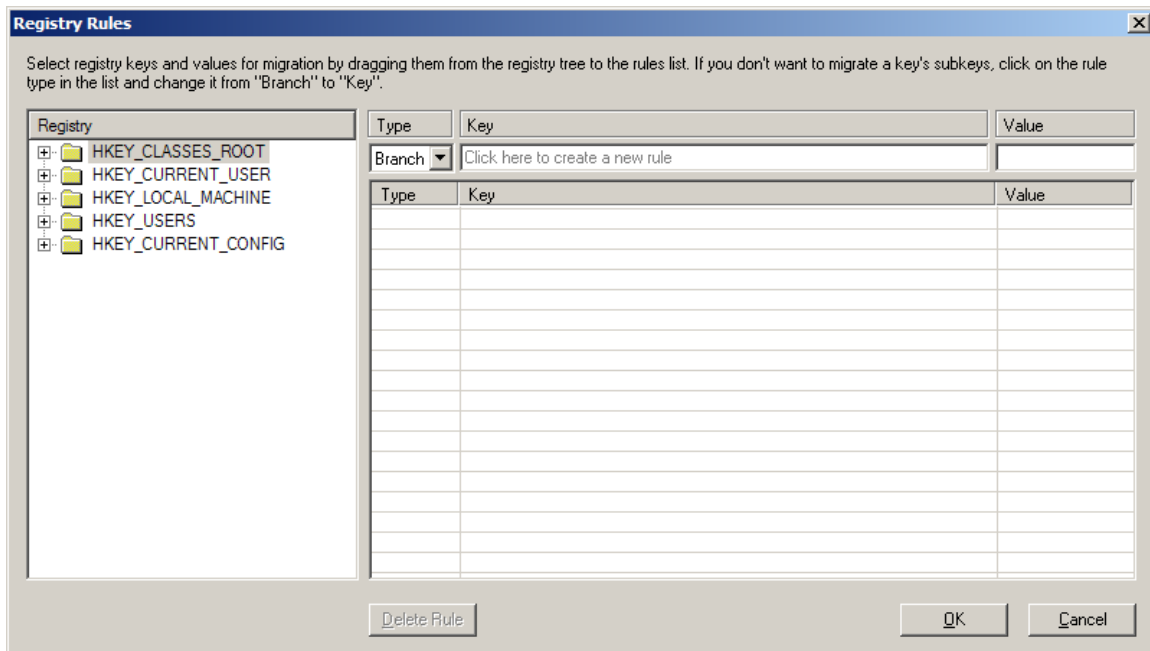
**Data Transport - File Inclusion / Exclusion Rules**

Source Path	Date	Size	Sub	Inc	Exc	Destination Path	PrsSub
c:\*.bat			Yes	X			

## Registry Rules

Registry rules are part of the same paradigm as are File Rules, allowing the administrator to design templates for gathering data about registry entries to be managed as part of the settings (personality) data set.

# TRANXITION



## Creating registry rules

Simply drag and drop values or keys out of the tree into the **Rules List**. Keys dragged default to "Branch" (including all subordinate values and sub-keys) but may be changed

# TRANXITION

to “Key” (include values, but not sub-keys) and rule may be created manually by using the fields at the top of the list.

All listed registry keys and values will be migrated to the target computer. No transformation of contents or destination is currently supported with Registry Rules.

## **Licensing**

File and Registry rules are part of Migrate7 and come under the terms of the Migrate7 seat license.

## **Support**

Support for File and Registry rules is included under the terms of support for Migrate7.

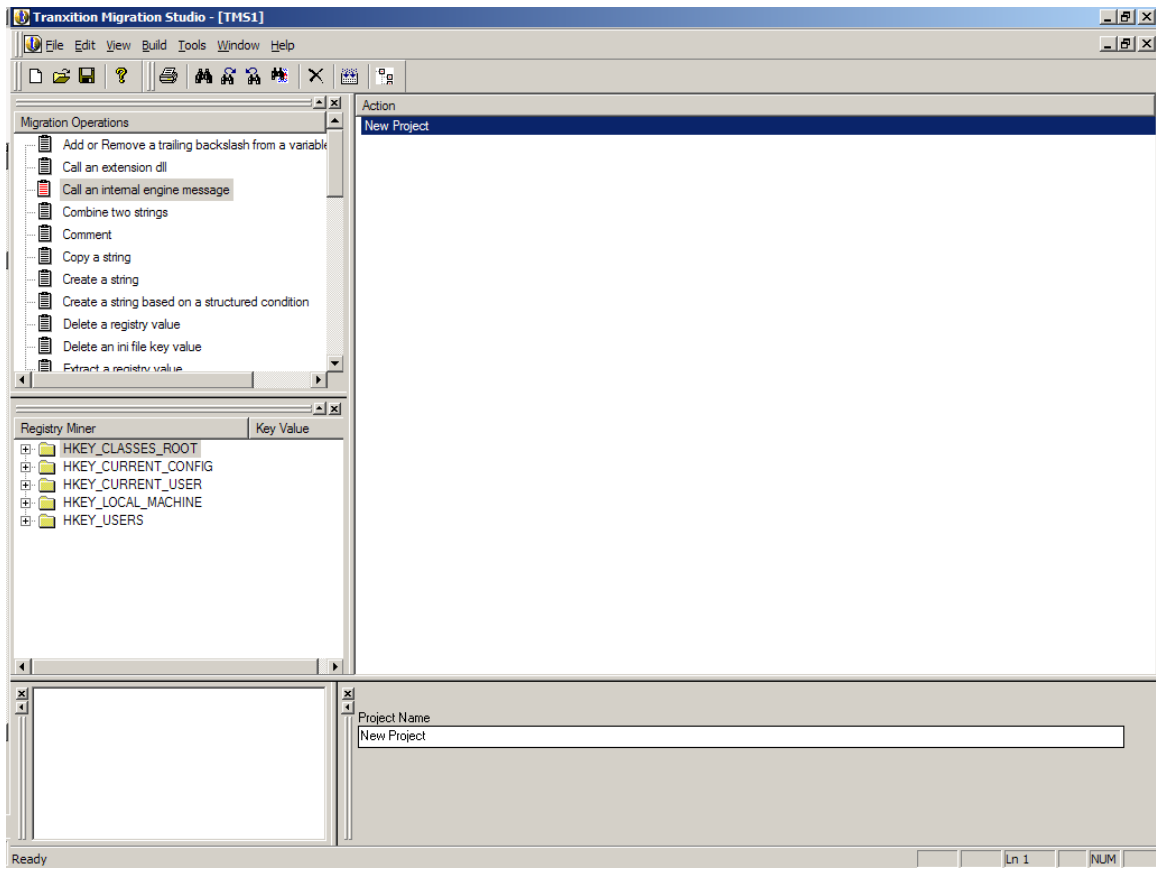
## **Tranxition Migration Studio**

### **Capabilities**

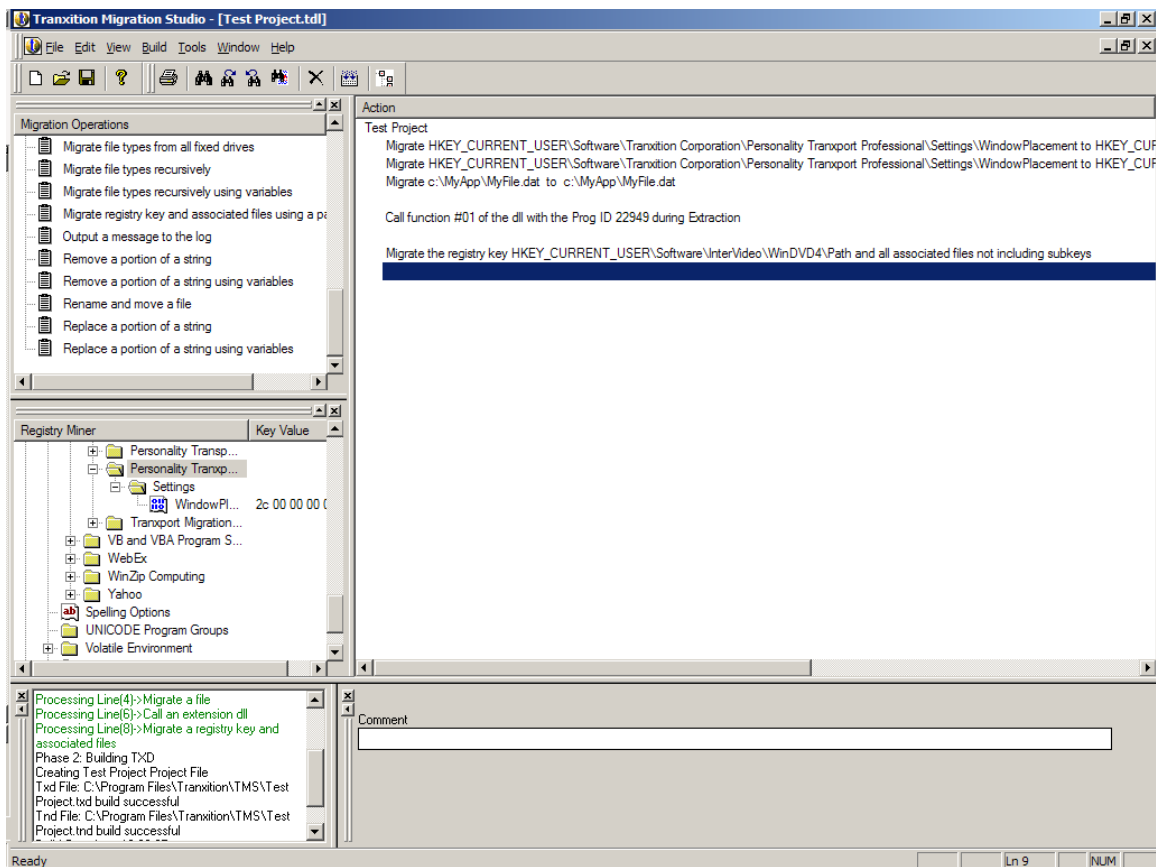
TMS is a high-end studio product that allows complete definition and management of content, including the use of extension DLLs that afford complete granular control of migration steps, including sophisticated code-based transformations. Essentially anything that can be done with code can be inserted into the process.

TMS has a steeper learning curve than either File or Registry Rules, but once mastered is a rich and capable tool. TMS produces binary content files (.txd) that are added to the Migrate7 implementation.

# TRANXITION



# TRANXITION



## Use Case

TMS is used to define sophisticated content for unsupported or custom applications. TMS is more appropriate for a technician with some coding or scripting background and at least entry level knowledge of Windows internals such as the Windows Registry.

## Licensing

TMS is licensed per content developer.

## Support

TMS requires basic operational training and support is limited to operation of the tool. Assistance in producing actual content is fee for service and not included in basic support.

# TRANXITION

## Selecting the Right Tool

### When to use File Rules

File rules are used to locate and migrate all desired user data on the source computer. Beyond this, they can be used to migrate legacy applications, as long as the applications consist entirely of file-based code and settings, and if the applications don't make assumptions about the environment that will no longer be true on the target computer.

### When to use Registry Rules

Registry rules are employed to migrate specified registry entries from the source to the target computer. These are employed if there is one or more registry entries the user wants migrated, and which aren't covered by the content that comes with Migrate7. Registry Rules can be used in conjunction with File Rules to migrate legacy applications that may include some settings in the registry, and which don't need to be transformed as part of the migration. Whenever applications are migrated, the environment on the target computer should be compatible with the application's assumptions.

### When to use TMS

TMS is advanced migration content studio, used to develop complex migration content. TMS is the tool used by Tranxition to create the content that ships with Migrate7. The studio supports multiple, complex migration operations including the ability to migrate registry entries to different locations on the target computer (often necessary in robust cross-version migrations), migrate registry entries and files referred to by those entries, migrate .INI file contents, do some data transforms, and much else. TMS also supports the capability of calling an **Extension DLL** as part of a migration. These DLLs can be written to do anything required for migration that isn't addressed by the existing TMS verb set. Use TMS when you must do a complex, high-level migration that includes things like data manipulation and transformation, re-mapping of one set of registry settings to a different set, in a different part of the registry, or other complicated operations not addressed by the File Rules and Registry Rules.

For further information, please contact Tranxition Sales at [Sales@tranxition.com](mailto:Sales@tranxition.com).

## Komputer Kraft Consulting

### Australia

Ph: +61-7-3103-2231

[sales@kkc.net.au](mailto:sales@kkc.net.au)

[www.kkc.net.au](http://www.kkc.net.au)

### New Zealand

Ph: +64-9-889-4290

[sales@kkc.co.nz](mailto:sales@kkc.co.nz)

[www.kkc.co.nz](http://www.kkc.co.nz)