



VBOX VIDEO HD2

Systems, Accessories & Cables

Published September 2021

All prices, products and descriptions accurate at time of publication



VBOX VIDEO HD2 systems

Our most sophisticated race car video data logger yet, **VBOX VIDEO HD2** features 1080p 60fps video, real-time synchronized video and data with graphical overlay.

HD2 Dual camera system with OLED Predictive Lap Timing Display (RLVBVDHD2DSP)

\$3,600



Package contents:

- HD2 data logger
- 2 cameras
- Microphone
- 2 suction mounts
- 2 camera clamps
- In car power supply
- Antenna
- 32 GB SD card
- OLED predictive display



HD2 Dual camera system **\$3,150** (RLVBVDHD2-2)

- HD2 data logger
- 2 cameras
- Microphone
- 2 suction mounts
- 2 camera clamps
- In car power supply
- Antenna
- 32 GB SD card



HD2 Single camera system **\$2,750** (RLVBVDHD2-1)

- HD2 data logger
- 1 camera
- Microphone
- 1 suction mount
- 1 camera clamp
- In car power supply
- Antenna
- 32 GB SD card

HD2 Track Package

The HD2 Track Package includes roll cage camera mounts and an un-terminated power cable for easier fitment into vehicles fully prepared for racing.

HD2 Dual Camera Track Package

(RLVDHD2TR)

\$3,200



Package contents:

- HD2 data logger
- 2 cameras
- Microphone
- 2 roll cage camera mounts
- Unterminated power cable
- Antenna
- 32 GB SD card

Package add-ons:

CAN Splitter	+ \$170
OLED Predictive Display	+ \$450
CAN Splitter + OLED Predictive Display	+ \$620

HD2 with HDMI Track Package

The HD2 Track Package is available with an HDMI option allowing you to stream real-time video and audio to an HDMI compatible monitor, recorder or streaming device.

HD2 with HDMI Dual Camera Track Package

(RLVDHD2HTR)

\$3,450

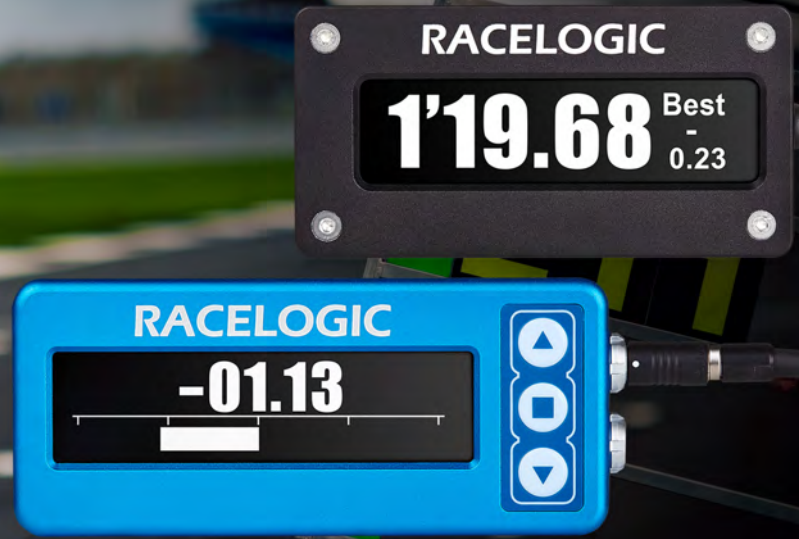


Package contents:

- HD2 data logger with HDMI
- 2 cameras
- Microphone
- 2 roll cage camera mounts
- Unterminated power cable
- Antenna
- 32 GB SD card

Package add-ons:

CAN Splitter	+ \$170
OLED Predictive Display	+ \$450
CAN Splitter + OLED Predictive Display	+ \$620



Predictive Lap Timing Displays

The high contrast OLED display is the perfect partner to your **VBOX VIDEO HD2**. Suitable even in bright conditions, the display provides sharp graphics and is simple to use.

It can show a wide range of parameters, including **live** and **max speed**, **lap times**, and **predictive lap timing** - using GPS rather than distance.



Blue OLED Display \$1,175
(RLVBDSP04)

Waterproof billet aluminum casing and face plate. Includes RLCAB063 3.5m cable.

Features:

- Conventional lap times
- Predictive lap times
- Split times
- Speed
- Scene selection



Black OLED Display \$655
(RLVBDSP05-L)

Splashproof plastic case with billet aluminum face plate. 2m flying lead cable.

Features:

- Conventional lap times
- Predictive lap times
- Split times
- Speed
- Scene selection

Replacement Cable
(RLCAB063)



Replacement cable to connect
HD2 to Blue OLED Display

\$250



Input Modules

Analog, digital (e.g. RPM), thermocouple and wheel speed data is read by an input module and output as CAN to be read by the connected **VBOX VIDEO HD2**. The additional data can be set to show as a channel parameter on the graphically enhanced video.

There are three types of input module available; the **Micro Input Module**, **Mini Input Module** and a modified version of the Micro Input Module designed to be used with historic vehicles.



Micro Input Module **\$350**
(RLVBMICIN01L)

Small, cost-effective module ideal for applications that only require a minimum of additional signals to be recorded.

- 4 analog inputs (10 bit)
- 1 digital frequency input
- CAN bus output
- Includes comms cable (Length 1.8m. RLCAB090C)

Historic Modified Micro **\$350**
(RLVDPHIST01)

Modified for noisy ignition on historic vehicles. Includes comms cable and 10-way screw terminal.



Mini Input Module **\$1,565**
(RLVBMIM01)

Comprehensive module allowing data such as temperature, RPM, wheel speed, fuel flow, throttle angle and pedal forces to be measured.

- 8 channel 16 bit analog inputs
- 2x K-Type thermocouple 0-1024°C
- RPM & wheel speed inputs
- CAN bus interface

Requires additional cable. Two options available:

- | | |
|---|--------------|
| RLCAB005-C CAN & power lead (2m length) | \$140 |
| RLCAB006 CAN, serial & power lead (30cm length) | \$130 |



LiveU Solo Video Streaming

(RLACS298)

From \$995

RACELOGIC have teamed up with New Jersey based company LiveU to offer customers the ability to stream live video using the LiveU Solo video streaming service.

LiveU Solo works alongside a **VBOX VIDEO HD2 HDMI** to send graphically enhanced video generated in real-time to platforms such as Youtube, Facebook, Persiscope and more, LIVE!

- Professional-grade wireless video encoder
- Livestream HD2 video to all popular platforms
- Livestream race footage back to the pits
- Consistent & high-quality live streaming
- No SIM card provided (a range of suitable telecom providers and services available)

How it works

LiveU's patented video protocol LRT™ deploys smart algorithms like adaptive bit-rate adjustment and automated error correction to deliver rock-solid live streams with superior video quality.

It combines the bandwidths of up to four internet sources (2 x cellular networks, 1 x WiFi, 1 x Ethernet) to create a single, strong upstream line.

By transmitting the video data over multiple connections, LiveU Solo HDMI ensures reliable live streaming even if one network degrades or drops out completely.



Dual Supply Power Cable

(RLACS300)

Cable for auto switching from vehicle power to external battery supply in the event that the car is turned off to keep the **VBOX VIDEO HD2** powered up so that the Live feed is not lost.

\$165



LiveU Charge Adapter Cable

(RLCAB158)

Adapter cable to charge LiveU Solo via Lemo power cable (either RLCAB010LE or RLCAB014LE). Cable length 30cm.

\$85



12v Power Lead for LiveU

(RLCAB010D)

Alternative power supply lead for LiveU Solo with 12V auxillary cigar lighter socket. Cable length 2m.

\$30





Tire Temperature Monitoring

The **RACELOGIC** Tire Temperature Monitoring System has been specifically designed to measure, log and display the surface temperature of a tire, significantly speeding up the tuning and setup process.

It provides a visual representation of the whole surface temperature of all four tires via 64 individual heat maps, 16 channels per tire, as well as maximum temperature values.

Available with an in-car display to allow drivers to manage their tires in real-time or as a sensors only kit, with both options able to connect to a **VBOX VIDEO HD2** to log tire temperature data as a channel on the data enhanced video.



Tire Temperature Monitoring System

\$5,520

(RLVBTMS-M)

Includes:

- x4 sensors and wiring loom
- Display - **VBOX Touch** (allowing instant driver analysis)



Tire Temperature Sensors and Wiring Loom

\$2,560

(RLACS272-120) 120° FOV
(RLACS272-60) 60° FOV

Includes:

- x4 sensors and wiring loom



Accessories

Second Vehicle Kit

\$1,200

(RLACS274)

All the accessories required to install a **VBOX VIDEO HD2** in a second vehicle, allowing the transfer of the main system between vehicles.

Includes: 2x 1080p cameras, 1x mono microphone, 1x unterminated power supply, 1x antenna, 2x roll cage mounts, 2x camera ring clamps



1080p Camera

\$460

(RLACS222)

1080p camera with a Lemo connector. Standard cable length 3m (6m option available).



TICKR Heart Rate Monitor

\$100

(RLACS227)

Connected via Bluetooth the TICKR Heart Rate Monitor logs heart rate and lets you display it as a channel on the video.



Clip-on CAN Bus Interface

\$280

(RLACS182-L)

Fits all vehicles which utilise a CAN bus. Can be installed and removed quickly with no 'bare-wire' connection required. Cable length 1.5m.



CAN Gateway \$590
(RLVBCGW01)

CAN Gateway records data from a vehicle CAN or CAN FD bus and a **RACELOGIC** module at the same time.

CAN Gateway is designed to control the flow of CAN data between two separate buses. It will auto detect the baud rate of the connected vehicle/sensor CAN bus and capture the data without injecting unwanted CAN messages.



OBD Bluetooth Module \$100
(RLACS228)

Capture up to 11 OBD channels via this Bluetooth module which plugs into the vehicle's OBD port. After pairing the Bluetooth OBD module with a HD2 it can be configured through the **VBOX** Setup software.

Note: OBD Bluetooth Module is only able to detect signals that are present on the CAN bus, which is dictated by the vehicle manufacturer.

Bluetooth Start/Stop Logging Switch \$130
(RLACS224)

Bluetooth enabled start/stop logging switch. 2m Bluetooth range.
Note: You will need to pair with your system before use.



Remote Start/Stop Logging Switch \$230
(RLACS237)

Wired remote start/stop logging switch. Also allows users to log directly to USB or SSD (formatted to FAT32).



Replacement GPS Antenna \$50
(RLACS262)

Replacement GPS antenna. Cable length 3m. RG-174 and SMA IP67 rated.



Protective Lens Cover

(RLACS240)

Protective lens cover for 1080p camera. Simply push cover fitment on to the camera lens to protect.

\$30



32 GB SD card

(RLACS231)

32 GB class 10 SD HC memory card.

\$30



Protective Carry Case

(RLACS232)

A convenient way to store and transport your HD2 whilst keeping it protected.

\$210



Battery Pack

(RLACS112L-US)

5.5AH Li Ion battery pack and charger. Approximately 5 hours of use from a full charge.

\$345





CAN Bus Modules and Cables

CAN bus modules allow the reading and logging of a vehicle's CAN data by the connected **VBOX VIDEO HD2**. The additional data can be shown as a channel parameter on the data enhanced video.

There are two types of CAN module available; the **VBOX CAN Gateway** and the **Clip-on CAN Bus Interface**. A **CAN Splitter Cable** may also be required when using an **OLED Predictive Display**.



VBOX CAN Gateway \$590
(RLVBCGW01)

Log vehicle CAN bus data where secondary CAN modules such as the OLED display or analog input modules are used.

The CAN Gateway allows for both data streams to be logged without any of the module traffic going back onto the vehicle CAN bus.



Clip-on CAN Bus Interface \$280
(RLACS182-L)

Operates with CAN of any voltage and ensures no intrusive signals are broadcast onto the vehicle's CAN bus with no 'bare-wire' connections.

Cable length 1.5m

Unterminated CAN Interface Cable 2m cable \$100
(RLCAB015L) 5m cable \$130

Unterminated CAN cable allows for bare wire connection to a vehicle's wiring loom. Blue wire = CAN high, White wire = CAN low.





OBDII CAN Cable **\$170**
(RLCAB069L-3)

CAN connection cable for vehicles that have CAN available from the OBDII socket.

To determine whether your car has CAN on OBD please refer to our [Vehicle CAN Database](#).

Cable length 3m.



OBD Bluetooth Module **\$100**
(RLACS228)

Capture up to 11 OBD channels via this Bluetooth module which plugs into the vehicle's OBD port. After pairing the Bluetooth OBD module with a HD2 it can be configured through the **VBOX** Setup software.

Note: OBD Bluetooth Module is only able to detect signals that are present on the CAN bus, which is dictated by the vehicle manufacturer.

CAN Splitter Cable **\$170**
(RLCAB081)

Required if logging from a CAN bus or Input Module and an OLED Predictive Lap Timer is also to be connected.



AiM CAN Cable (5-pin) **\$140**
(RLCAB145)

Cable terminates with a 5-pin connector and will connect into any available five-pin socket on an AiM dash or logger. Cable length 2m.



AiM CAN Cable (7-pin) **\$140**
(RLCAB144)

Terminates with a 7-pin connector. Compatible with Smartycam, Smartycam GP, Smartcam HD rev 2.1, Smartycam HD GP rev 2.1. Cable length 2m.





Porsche Accessories

VBOX VIDEO HD2 has been mandated in many Porsche Championships around the world. If you are looking to add video and data capture to your Porsche, or are looking for a replacement part, we have a range of products specifically designed for the following competition vehicles.

Porsche 991.1/991.2 Mounting Bracket

(RLACS264)

Complete mounting bracket designed for the secure installation of a **VBOX VIDEO HD2** body in Porsche 991.1 / 991.2 cup cars.

\$460

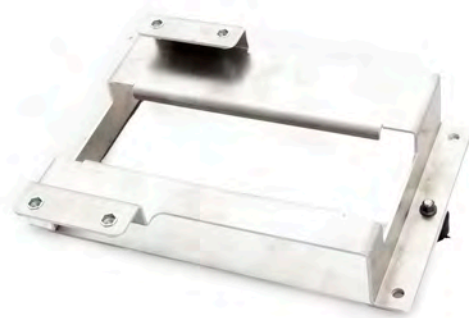


Porsche 992 Mounting Bracket

(RLACS315)

Complete mounting bracket designed for the secure installation of a **VBOX VIDEO HD2** body in Porsche 992 Cup cars.

\$135



991.1 Cup CAN Interface Cable

(CUSTCAB00101)

CAN cable for use in the Porsche 991.1.

\$100



991.1 Cup Power Cable

(CUSTCAB00102)

Power cable for use in the Porsche 991.1.

\$100



991.2 Gen2 Cup CAN / Power Interface Cable

(CUSTCAB00106)

CAN and power cable designed for use in the Porsche 991.2.

\$170



Porsche Cayman GT4 & GT2RS Clubsport CAN / Power Interface Cable

(CUSTCAB00118)

CAN and power cable designed for use in the Porsche Cayman 718 GT4 and GT2RS Clubsport.

\$210



Porsche 992 Cup Car CAN / Power Interface Cable

(CUSTCAB00128)

CAN and power cable designed for use in the Porsche 992 Cup Car.

\$225





Cables

A wide range of cables are available to power, connect to modules and inputs, and log to a USB device using a **VBOX VIDEO HD2**.

Unterminated Power Supply Cable

(RLCAB014LE)

Unterminated power cable for direct connection to a 12V and GND in the absence of a standard 12V auxillary socket. Cable length 2m.

\$80



In-car Power Supply

(RLCAB010LE)

Connection to in-car 12V auxilliary or cigar lighter socket. Cable length 2m.

\$80



USB Logging Cable

(RLCAB073)

Plugs into USB port to allow logging to a USB flash drive. Cable length 1m.
Note: We recommend using main name branded class 10 USB sticks.

\$70



CAN Splitter Cable

(RLCAB081)

Required if logging from a CAN bus or Input Module and have an OLED Predictive Lap Timer connected.

\$170



Unterminated CAN Interface Cable

(RLCAB015L)

Unterminated CAN cable allows for bare wire connection to a vehicle's wiring loom. Blue wire = CAN high, White wire = CAN low. Standard cable length 2m (3.7m and 10m options available).

\$100



AiM CAN Cable (5-pin)

(RLCAB145)

Cable terminates with a 5-pin connector and will connect into any available five-pin socket on an AiM dash or logger. Cable length 2m.

\$140



AiM CAN Cable (7-pin)

(RLCAB144)

Terminates with a 7-pin connector. Compatible with Smartycam, Smartycam GP, Smartcam HD rev 2.1, Smartycam HD GP rev 2.1. Cable length 2m.

\$140





Clamps and Mounts

A range of clamps and mounts to allow fitment of an HD2 system and 1080p cameras securely, anywhere.

Quick Release Mounting Bracket

(RLACS258)

Locks the HD2 onto sheet metal, plastic, carbon or chassis, but removal is quick and easy by simply moving the catches back.

\$100



Roll Cage Bar Mount

(RLACS268)

Harness bar mount for 1 5/8" (41.275 mm) roll cages.

\$160



Roll Cage Bracket

(RLACS267)

Fits FIA specification roll cage. Also connects to the elbow joint of RLACS287 Windscreen Suction Mount replacing the suction cups and plate.

\$30



Roll Cage Mount with Thumb Nut

(RLACS286)

Fits FIA specification roll cage. A locking nut has been added to allow the camera or display to be securely fastened into position.

\$50



Heavy Duty Camera Clamp

(RLACS270)

Screws onto either the RLACS260 or RLACS233 and allows for secure mounting of a 1080p camera. 1/4" UNC thread.

\$40



Ring Camera Clamp

(RLACS269)

Screw down camera clamp for 1080p cameras.

\$10



Heavy Duty Suction Mount

(RLVBACS041)

Heavy duty suction mount for use with HD2 cameras, **VBOX** LapTimer or OLED Display.

\$130



Windscreen Suction Mount

(RLACS287)

Lightweight suction mount with locking nut to allow secure fastening. Extra ring clamps are required to mount the camera to the suction mount.

\$40



Set of 3 Suction Cups

(DBSUCSETX3)

A set of three replacement suction cups for Windscreen Suction Mount (RLACS287).

\$10



Camera Mount Extension

(RLACS273)

100mm mount extension. Fits any mount with a standard 1/4" UNC thread. Connects to Ring Clamp (RLACS116) and Roll Cage Mount (RLACS260).

\$20





Audio

Microphone

(RLACS221)

Mono microphone with Lemo plug. Standard cable length 2.5m (5m option available).

\$80



Microphone

(RLACS133)

Mono microphone with 3.5mm jack plug. Cable length 2.5m.

\$20



Audio Splitter Cable

(RLCAB132)

4-way Lemo to 2 female 3.5mm jack sockets.

\$90



Audio Interface Cable (Female)

(RLACS139FJ)

Audio interface cable to record audio from in-car intercom systems with female 3.5mm Jack socket.

\$40



Audio Interface Cable (Male)

(RLACS139PM)

Cable to record audio from in-car intercom systems with male Phono plug.

\$40



Online Store



An easy way to make online purchases and browse the **VBOX** Motorsport product range.

vboxmotorsport.com/store

Online Support Centre



Our Support Centre has been designed with you in mind; making it easier to find the information you need to know.

racelogic.support



/racelogic



@racelogic_uk



/vbox_motorsport



/vboxmotorsport

RACELOGIC USA

27260 Haggerty Rd,
Suite A2
Farmington Hills
MI 48331

Tel: +1 248 994 9054
Fax: +1 248 994 9054

sales@racelogic.com

Published September 2021

All prices, products and descriptions accurate at the time of publication.