

Trans-Am Data System

Motec C125/127 data system - Trans Am Series Race Car Installation

The Motec data system is designed as a two part system. Package 1 will utilize the C125/7 inputs to primarily measure temperatures and pressure. Package 2 will add additional instrumentation using an expansion harness and Motec E816. Expansion allows additional chassis monitoring and gives you the flexibility to choose the level of data required.

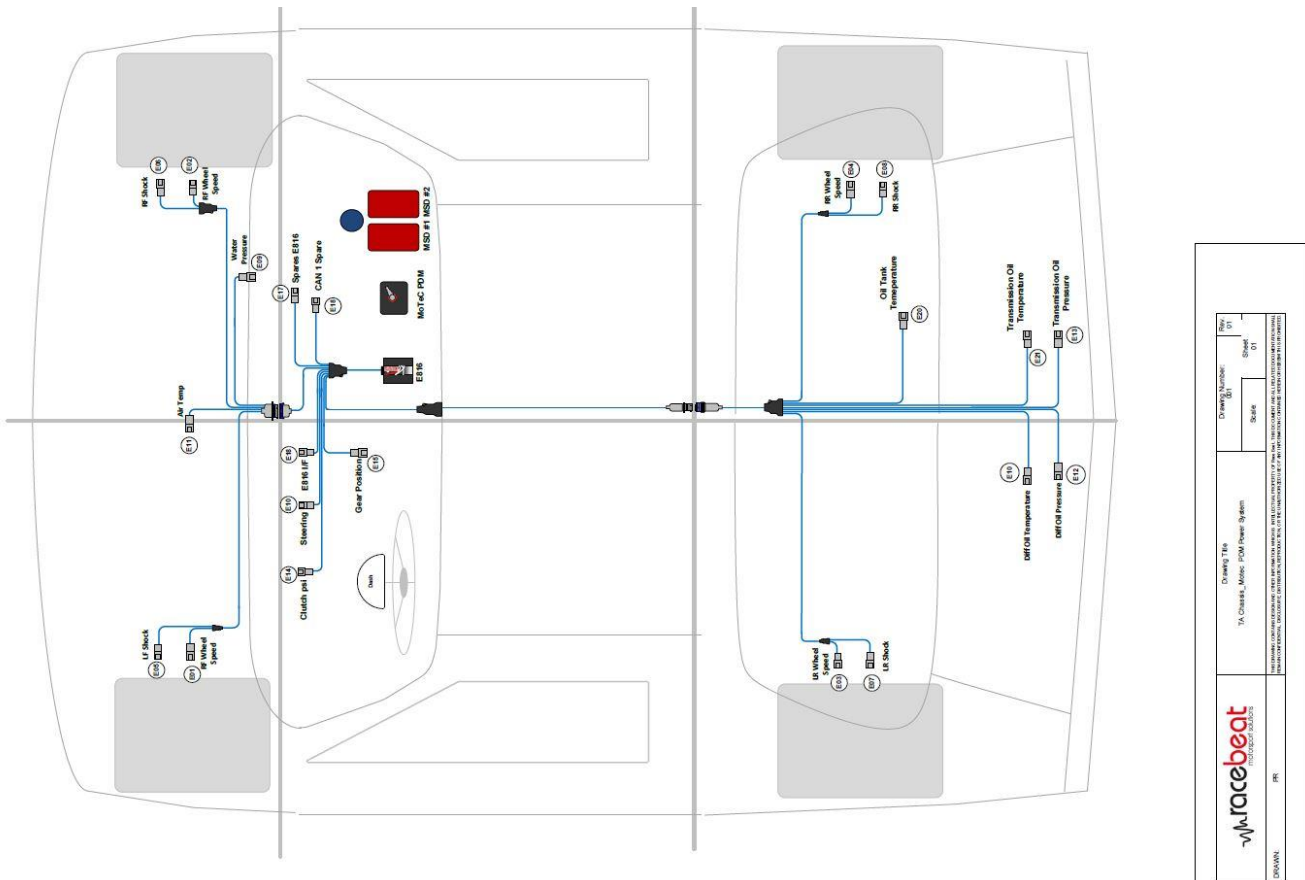
Color Display Logger:

- C127 - New Color Club Dash display, 7"
- C125 - Color Club Dash display, 5"
- 120 MB Logging memory
- Up to 500 Hz logging rate
- Pro Logging



Data Harness Design:

- Harness design is a two part loom system
- Package 1 utilizes C125/7 inputs (TA2 Compliant)
 - Uses Motec Race Loom and I/O Loom
- Package 2 utilizes C125/7 inputs plus E816 expansion inputs
 - Uses custom harness for 816 input/output



Package 1

Package 1 will primarily monitor temperature and pressure along with lap time to provide data to the dash display/logger. The package is TA2 compliant and can utilize the following sensors:

- GPS Track Map
- GPS Lap Timing
- Engine Temperature
- Fuel Pressure
- Oil Pressure
- RPM
- Brake Pressure
- Throttle Position
- Differential Temperature
- Gear Box Temperature
- Alarm – Alarm acknowledgement
- Scroll – Scroll dash bottom line
- Air Fuel Monitoring
- Relay Control
- Video Integration



MoTeC LTCD – Air/Fuel Ratio



Brake psi



Liquid Pressure



Liquid Temperature

Package 2

Package 2 will use a MoTeC E816 to add addition channels allowing for more sensors and instrumentation. This system integrates with Package 1 combining for an advanced system with the ability to add the following sensors.

- Shock Position Sensor (4)
- Brake Temperature (4)
- Wheel speeds (2)
- Oil Temperature
- Water Pressure
- Aero Sensor (optional)
- Ride Height (optional)
- Crank Case Pressure
- Steering
- Additional button Input



E816 Channel Expansion



Shock Position (Rotary)



Aero Pressure



Ride Height Sensor

Additional Options

Additional solutions can be incorporated catering to your instrumentation needs. Race Beat and our partners can provide race winning solutions:

- Camera System
- Rear View Monitor
- Telemetry
- Load Cells
- Power Distribution Module
- Tire Pressure Monitor
- Aero Sensing
- Lithium Battery
- Key Pad
- Fuel Flow
- Thermocouple Temperature
- Ride Height measurement
- Accident Data Recorder
- Knock Module
- Lighting Solutions
- Testing / Analysis

Race Beat Technical Partners

