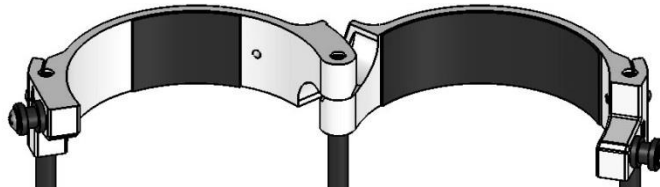
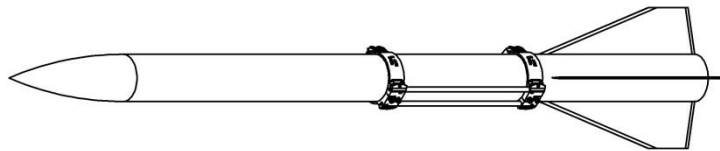


- 1) Close around rocket (either side can be up)
- 2) Fill gap between guide and rocket with cork tape. The guide should not rattle, but should close without additional force



- 3) Test the guides open and close without binding. (Minor adjustments may be needed between flights)
- 4) Attach directly above fins

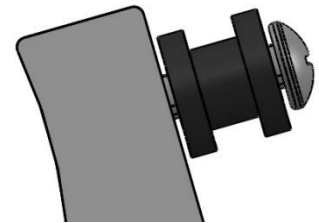


\*There must be no obstructions at or below the guide height (other rail buttons, camera shrouds, etc)

\*Square or swept forward fins should not be used with the guide

\*Do not fly a damaged guide

\*Rail buttons on guide must spin freely for a low friction liftoff.  
(Tighten the screws and then unscrew them  $\frac{1}{4}$  turn for best results)



- 5) Slide rocket and guide on to 1515 or 1010 launch rail. The feel of loading the rocket should be similar to a normal rail guide. If the rocket is binding, check that there is not too much cork spacer to close properly, and that the rail buttons can spin freely.
- 6) Recover guide after launch
- 7) Do not store in the closed position for long periods of time, nor at high temperatures.

**NOTICE OF RISK.** This product can at times involve risk of injury, property damage, and other dangers. Due to the wide variety of factors involved in HPR rocketry, it is impossible to predict all potential uses of this product. Therefore, **it is the responsibility of the buyer to determine the suitability and safety of this product for their rocket and flight.**