

Optional Case Styles

D80 Series

All dimensions are nominal. Dimensions in [] are in millimeters.

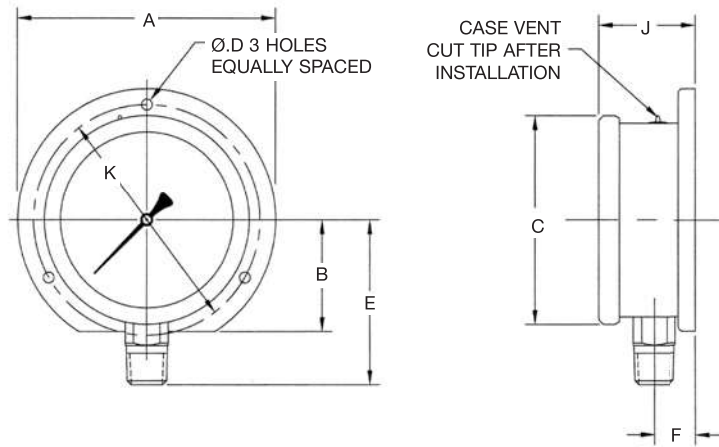
How to Order: Specify the Optional Case Code at the end of the Instrument Ordering Code.

Sample Order Number: *D82LFB 25 02 L A 300 - SML*

Case Style - D80 Series	Dial Size		
	2"	2 1/2"	4"
Surface Mounted, Back Flange Case for Lower Connection	N/A	SML	SML
* Panel Mounted, Front Flange Kit for Back Connection	198-0028	198-0025	FMB
* Panel Mounted, Front Ring Kit for Back Connection	N/A	198-0024	N/A
Panel Mounted, U-Clamp Kit for Back Connection	034-0036	034-0037	UCB

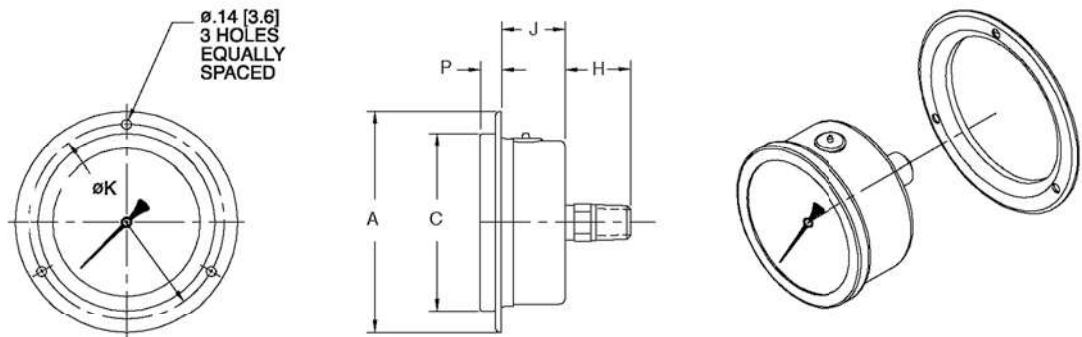
* **Kit Only. Not Factory installed.**

2 1/2" & 4" Surface Mount



Dial Size	A	B	C	D	E	F	J	K
2 1/2"	3.35 [85]	1.43 [36.3]	2.68 [68]	0.14 [3.6]	2.23 [56.6]	0.52 [13.2]	1.38 [35.1]	2.95 [75]
4"	5.20 [132]	2.19 [55.6]	4.18 [106]	0.19 [4.8]	3.07 [78]	0.62 [15.7]	1.47 [37.3]	4.57 [116]

2", 2 1/2" & 4" Front Flange



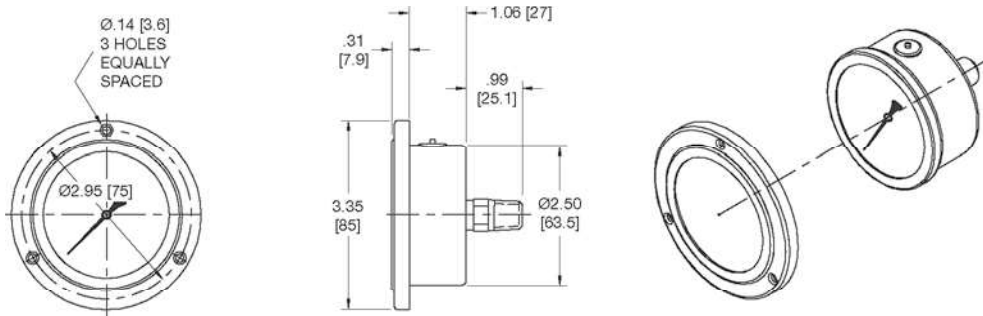
Dial Size	A	C	H	J	K	P
2"	3.03 [77]	2.09 [53]	0.99 [25]	0.94 [24]	2.65 [65]	0.32 [8]
2 1/2"	3.35 [85]	2.67 [68]	0.99 [25]	0.82 [21]	2.95 [75]	0.32 [8]
4"	5.20 [132]	4.17 [106]	0.99 [25]	0.91 [23]	4.56 [116]	0.42 [10]

Optional Case Styles

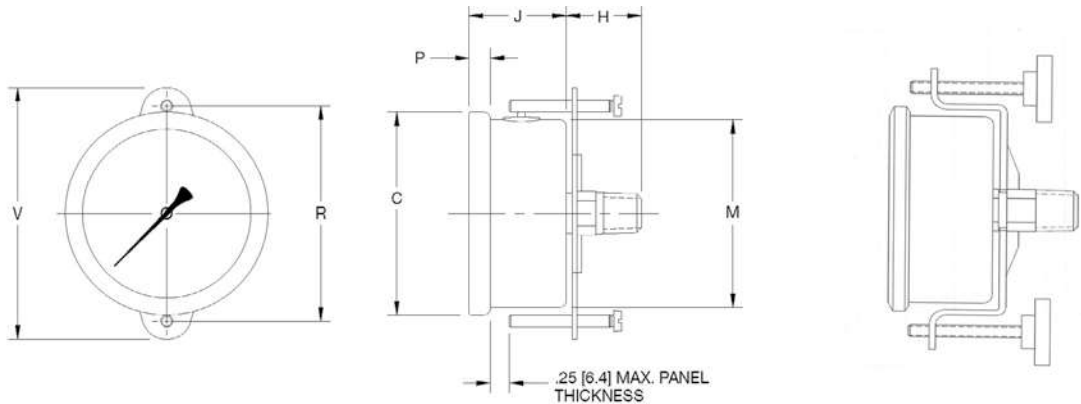
D80 Series

All dimensions are nominal. Dimensions in [] are in millimeters.

2 1/2" Front Ring



2", 2 1/2" & 4" U-Clamp



Dial Size	C	H	J	M	P	R	V
2"	2.09 [53]	0.99 [25]	1.10 [28]	1.91 [48.5]	0.18 [4.5]	2.28 [58]	2.76 [70]
2 1/2"	2.68 [68]	0.99 [25]	1.20 [30.5]	2.44 [62]	0.28 [7]	2.83 [72]	3.31 [84]
4"	4.17 [106]	0.99 [25]	1.32 [33.5]	3.88 [98.6]	0.28 [7]	4.33 [110]	4.80 [122]