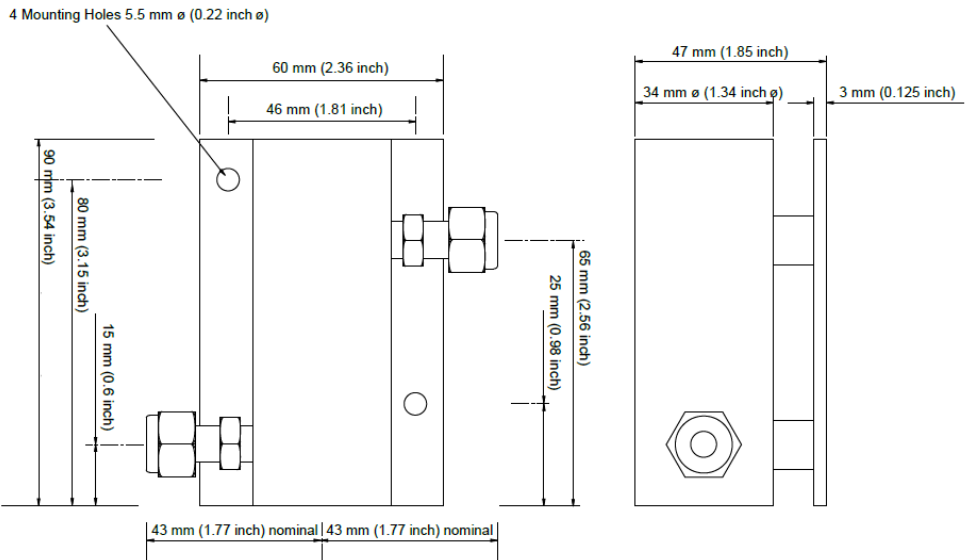


Sensor Holder

RJN March 5, 2024



NOTE: The assembly is shown with 1/4 inch OD tube fittings. The dimension across the tube fittings will vary for all other size fittings.

Sensor Holder

Model SEH, sensor holder is manufactured from solid stainless steel and houses the dewpoint sensor in inline installations. The unit has a design pressure rating of 400 bar (6000 psi) and can be supplied oxygen cleaned if required.

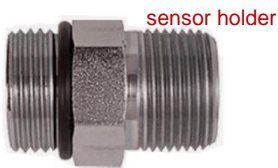
Materials of construction: Stainless Steel Wetted Materials.
Steel Mounting Plate

Please specify the type of sensor to be installed:

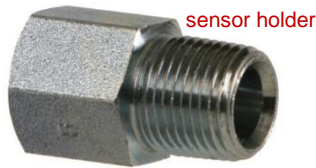
- SEH-ACD- X for use with the AcuDew Transmitter
- SEH- SDTex-X for use with the SDTex Transmitter
- SEH-SD3- X for use with the Superdew3 sensor

where x = 4 for 1/4", x = 8 for 1/8", or x = 6 for 6mm (Swagelok compression fittings)

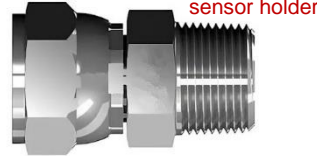
Options (Inquire for pricing)



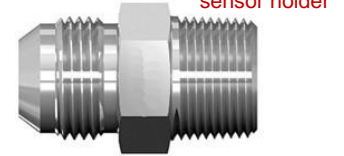
1/4" SAE-BOSS
Male



1/4" SAE-BOSS
Female



1/4" 37° JIC Female
(7/16"-20 thread)



1/4" 37° JIC Male
(7/16"-20 thread)