



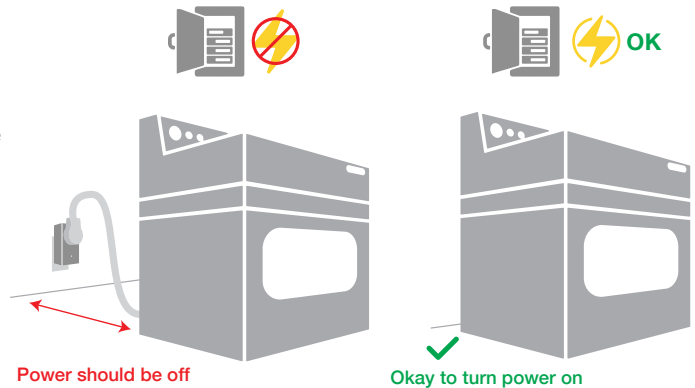
## Installation Tips and Tricks

Here are some quick, but important tips to be used along with the *User and Installation Guide* to ensure an efficient & successful installation.

1

### Only turn power back on **AFTER** the stove is pushed back against the wall.

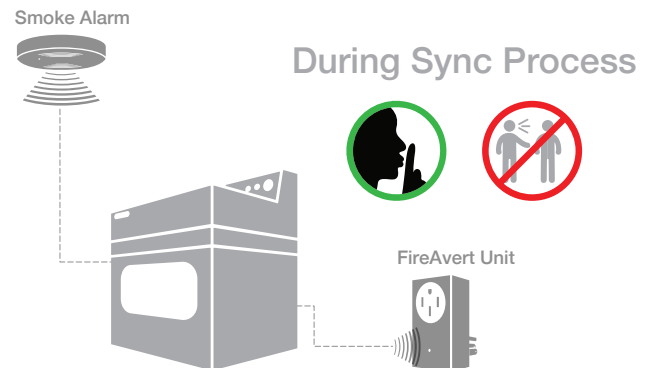
We found if the breaker is powered while pushing the stove back against the wall the FireAvert can sync to the sound of the stove pushing against the floor. This isn't common, but it's better to be sure.



2

### Make sure to eliminate any background noise during syncing process

After the stove is pushed back & stove breaker is on, confirm you can hear the FireAvert beeping. After you have confirmed the FireAvert is beeping (for at least 15 seconds) quickly sound the smoke alarm for a constant 30 seconds. Though not common, we found when there is noise in the back ground, even people talking loudly, the FireAvert can sync to that noise instead of the smoke alarm sound.



3

### Make sure smoke alarm is no longer sounding when you test the stove burners.

After the FireAvert is synced to the smoke alarm, and a full test is complete, ensure that the smoke alarm is NOT sounding when you test the stove burners. To test, turn burners on for approx. 45 seconds and verify there is heat coming through to the burners. If there is no heat OR if the burner turns off without a smoke alarm sound, pull the FireAvert unit and warranty it.

### While Testing Burners

Make Sure Smoke Alarm is Off



4

**IMPORTANT:** Before leaving the room verify all burners and oven have been turned off!