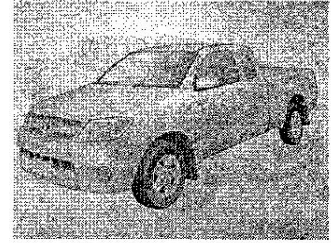


KEEP THE FEELING!

TOYOTA GENUINE
PARTS, SERVICE & ACCESSORIES



**HiLux EXTRA CAB UTILITY
WITHOUT SPORTS BAR
February 2005 production onwards
Installation Instructions for
Hard Tonneau Cover**

Accessory Part No. PZQ70 89250

Installation Time: Approx. 30 mins

Place these instructions in vehicle's glove box after installation is complete.

Important:



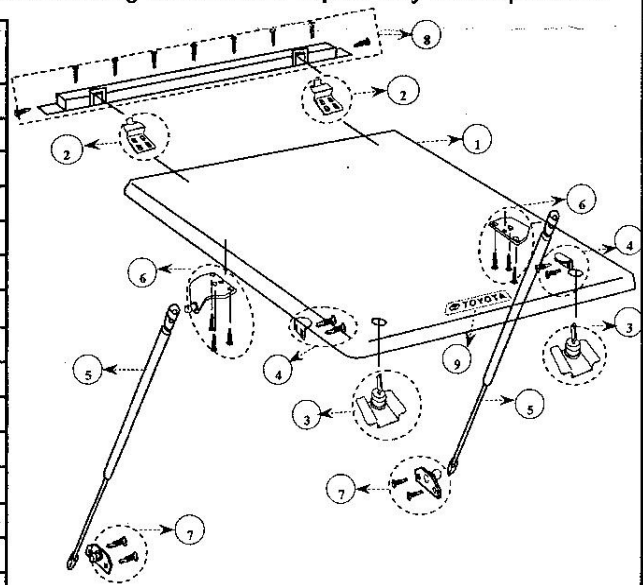
Space reserved for warnings, pictographs and/ or explanations

Parts List

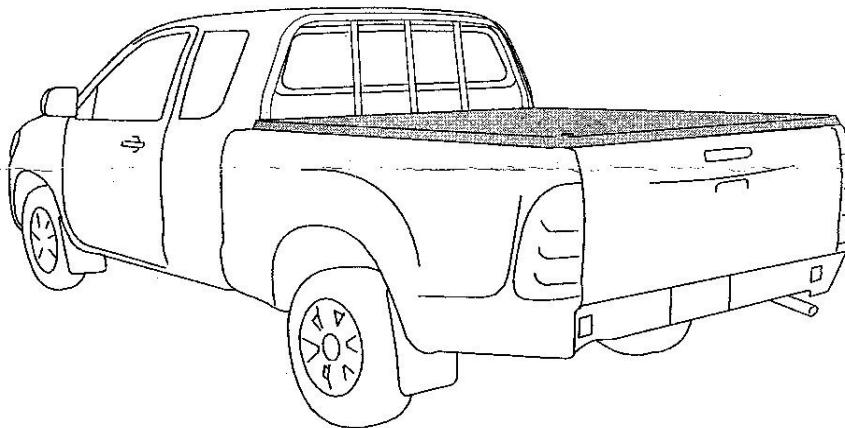
Important : Check contents of kit before commencing fitment and report any discrepancies

Item	Component Name	Part No.	Qty	Pre-fitted
1	Hard Tonneau Cover	PZQ70 89240HT	1	x
2	Front Hinge	PZQ70 89010FH	2	√
3	Lock Kit	PZQ70 89010LK	2	√
4	Lock Bracket	PZQ70 89010LB	2	x
	-Self Drilling Screw		4	x
5	350N Gas Struts	PZQ70 89010GS3	2	x
6	Lid Strut Bracket	PZQ70 89010LS	2	x
	- M6 Bolt		6	√
7	Body Attach Bracket	PZQ70 89010BB	2	x
	- Self Drilling Screw		4	x
8	Front Bar Assembly Set	PZQ70 89010FB	1	x
	-Self Drilling Screw		9	x
	- Alcohol wipe		1	x
9	Toyota Badge	PZQ70 89010TB	1	√

Note: √ shows part which is fitted onto the hard tonneau cover



Lay Out



Tools Required:

- Masking Tape and Marking Pen
- Tape Measure
- Cordless Drill
- 2 mm Drill Bit (with 5 mm stop)
- #2 Philips Screwdriver
- 5 mm Allen Key

Care Instructions:

- Read instructions Fully before commencing installation.
- Refer to manufacturers instructions applicable to power drill
- Wear appropriate safety goggles when drilling
- Protect Tub floor against scratches during installation process.

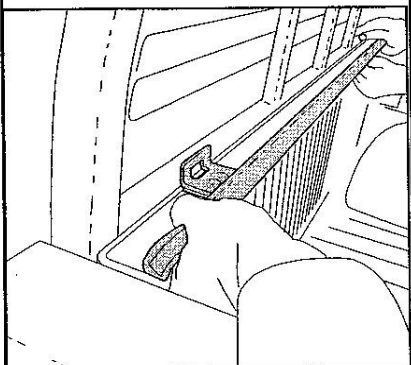


Fig.1

Important:



Do not use these instructions, if Ute has a uteliner.

Refer to separate instructions titled
" Use if Ute has a uteliner "
also enclosed with this product

CAUTION:

Over tightening fasteners attached to the hard tonneau cover may damage the threaded inserts. Please use recommended tightening torques where specified.

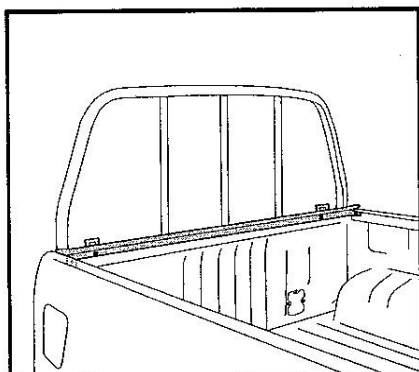


Fig.1A

1. **Front Bar Assembly (FBA)** is to be fitted first. Align bar along front of tray, ensuring ends of bar are flush with sides of tray. Attach the FBA using nine self-drilling screws (supplied) through holes pre-drilled in bar. Apply clear or black silicone to any gaps between the FBA and the vehicle to prevent water entry.

Refer to Fig. 1 and Fig 1A

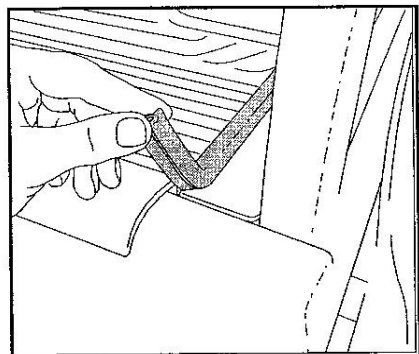


Fig.1B

2. Clean the utility tub rail by using Alcohol wipe supplied. Remove backing from the foam tail and stick down the tail to the top of the utility tub rail. Do not stretch the tail.

Refer to Fig. 1B

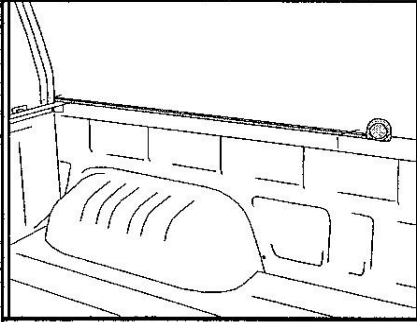


Fig.2

3. Hook tape measure over front edge of tub, measure along top edge of tray **1040mm** then down **25mm** and mark the center position for the ball bracket. Position the gas strut bracket accordingly, mark both mounting holes and center punch

Refer to Fig. 2 and Fig. 3

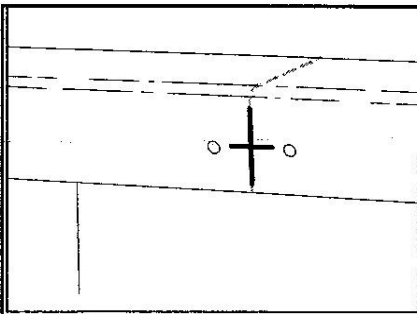


Fig.3

4. Using a 2 mm diameter drill bit set to 5 mm drill stop. Drill two pilot holes. Attach small gas strut bracket by using self-drilling screws. Repeat process on other side of tray.

Refer to Fig. 3 and Fig. 4

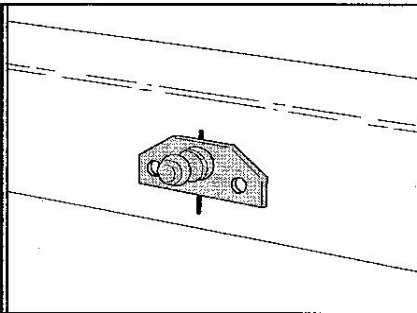


Fig.4

5. Attach small shaft end of gas strut onto gas strut brackets, by clicking them in place.

Refer to Fig. 4 and Fig. 5

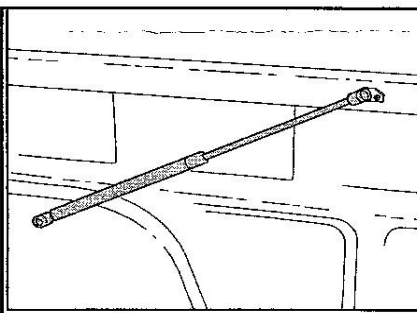


Fig. 5

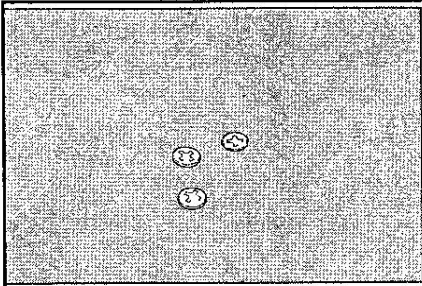


Fig.5A

6. Ensuring the lid is adequately supported to prevent damage or scratches, unscrew the 6 Phillips head screws from the underside of the lid (3 per side) and use them to fit the upper gas strut mounting brackets to the lid.

Refer to Fig. 5A

Important:



DO NOT over tighten screws.

Recommended tightening torque is between 1 to 3 Nm

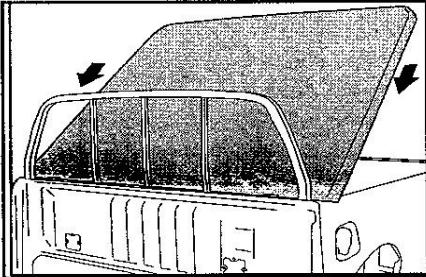


Fig.6

7. With one person on each side, lift lid to the vertical position and insert the hinge tongues into the hinge slots on the front bar assembly.

Refer to Fig. 6 and 6A

Important:



Ensure tongues are fully inserted into the hinge slots.

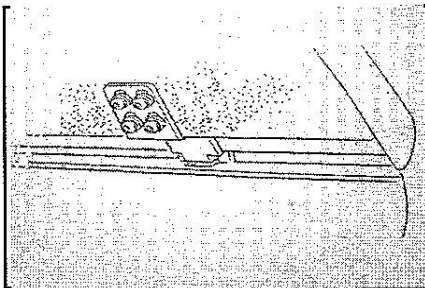


Fig.6A

8. Attach the cylinder end of each gas strut onto the mounting brackets attached to the lid by clicking into place.

Refer to Fig. 7 and 7A

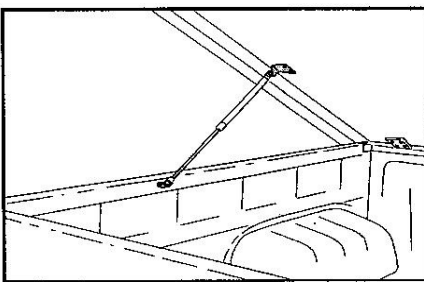


Fig.7

Important:



To remove the lid from the vehicle, detach the gas struts from the lid. This is done by inserting a small screwdriver under the metal spring clip on the strut and easing it out sufficiently to allow the strut to be popped off the ball. Refer to Fig. 7A.

Ensure someone is supporting the lid when detaching.

Never completely remove the metal spring clip from the gas strut end, and never force the strut off the ball.

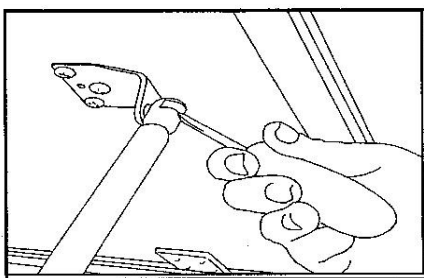


Fig.7A



9. Close lid and check it fits snugly and evenly around all sides. Make sure it also fits down snugly over the tailgate. If it does not, then adjust as follows:
 - a. Open lid, disconnect struts from lid.
 - b. Loosen four Allen key bolts on each side of the two hinge tongues on the lid.
 - c. One person needs to lie on their back in the utility while second person closes lid and adjusts the fit by setting lid into ideal position. The person in the Ute then re-tightens the Allen head bolts before opening lid.
 - d. Open lid and reattach gas struts.

Important:



DO NOT over tighten the Allen head bolts.
Recommended tightening torque is between 1 to 3 Nm

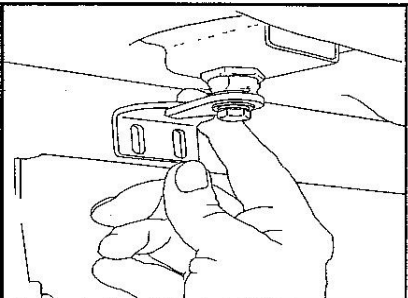


Fig.8

10. To fit the lock brackets, open tailgate and close lid. Make a mark where the lock cam (arm) lines up with the sides of the Ute body. Open the lid to install lock bracket. Position lock bracket and using a 2 mm diameter drill bit set to 5 mm drill stop to drill a pilot hole in each vertical slot of the bracket. Ensure that there is allowance for up and down adjustment of the bracket. Fasten bracket with self-drilling screws (supplied) ensuring thread installs into metal of Ute rail, again allowing for up and down adjustment

Refer to Fig. 8

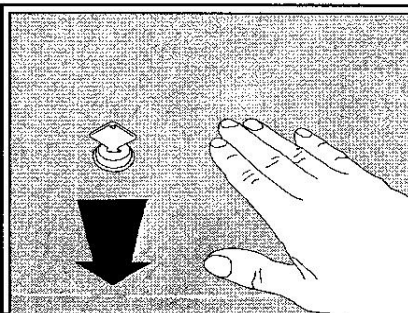


Fig.9

11. Close the lid and try the locks. You may need to adjust the lock brackets on the Ute tub up or down. When correctly adjusted, you should need to apply only **slight** pressure to the lid in order to operate the locks. Ensure keys can be operated easily.

Refer to Fig. 9

Important:



Excess tension could damage the lock.

12. Your Ute should now look fantastic with its new lid fitted.

Remember, when removing and re-fitting your lid ensure that the hinges are fully engaged to avoid damaging or bending them.

13. Maintenance:

Check tightness of brackets regularly. Lubricate locks monthly with graphite.

Important:



NEVER DRIVE WITH LID OPENED OR IN AN UNLOCKED POSITION

PAINT CARE INSTRUCTIONS:

YOUR NEW PAINTED HARD TONNEAU COVER HAS BEEN COVERED WITH A PLASTIC FILM TO PROTECT THE PAINT FROM DAMAGE. IT WILL REQUIRE CLEANING AND POSSIBLY LIGHT POLISHING AFTER THE PROTECTIVE FILM HAS BEEN REMOVED. USE POLISH AS PER NEW PAINT ON A NEW VEHICLE. WASH LID USING WATER AND NORMAL CARWASH DETERGENT AND POLISH WITH AN AUTOMOTIVE POLISH.

BLACK LEATHERGRAIN FINISH CARE INSTRUCTIONS:

YOU CAN POLISH WITH FIBREGLASS POLISH (AS PER BOATS). WASH LID USING WATER AND NORMAL CARWASH DETERGENT.