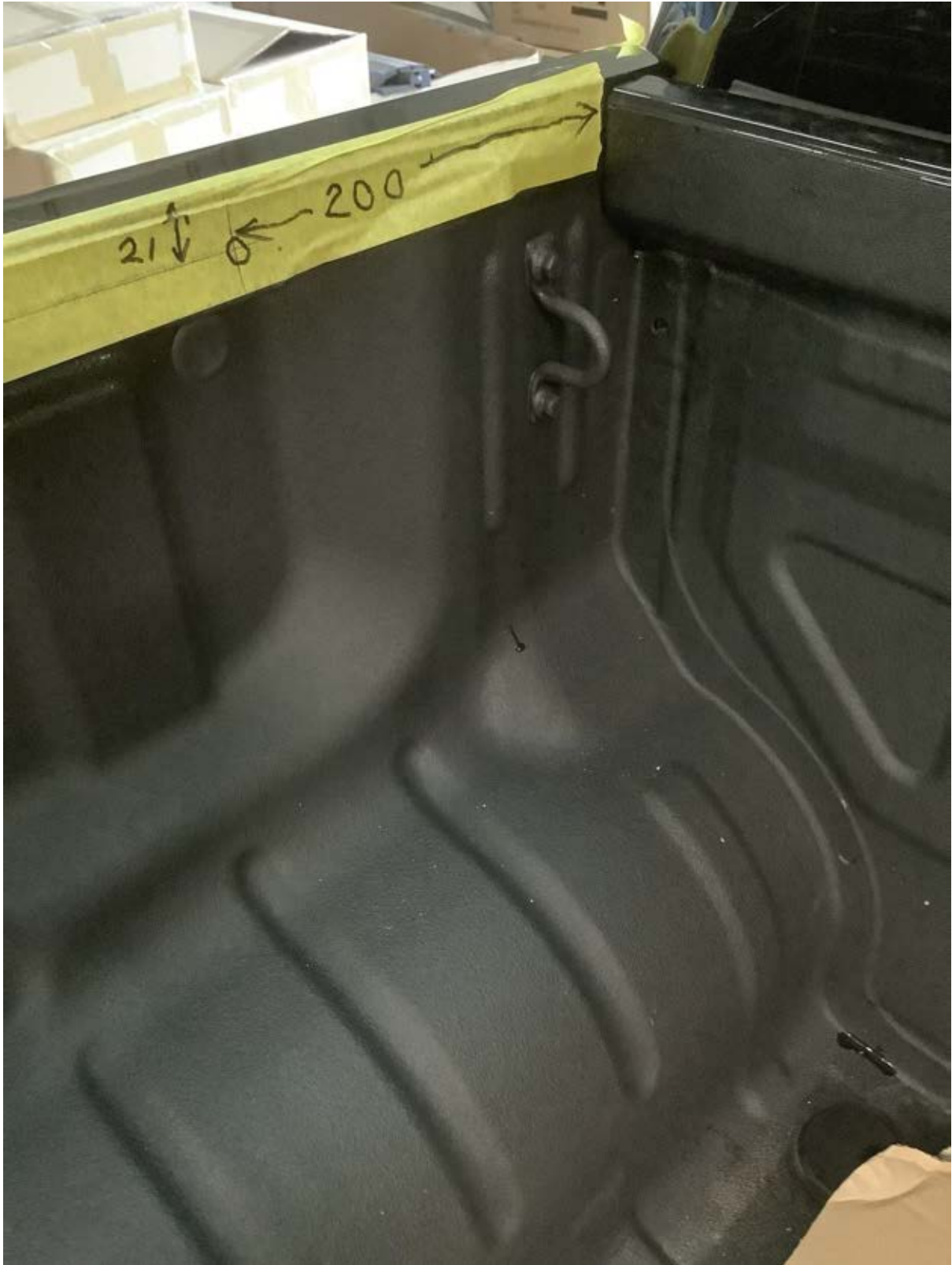


•



Drill first hinge mounting hole here . Use hinge as a template and drill 6 mm holes then enlarge to 9mm for nutserts

Use hinge to mark location of bracing screw and install 6mm nutsert in this location.





Fit hinge mounting screws but do not tighten, fit bracing screw and set hinge bracket to 65 mm from the side , as per photo below, then tighten the 3 mounting screws.





Drill a 9 mm hole here for strut wires and grommet





Fit wires and grommets, and fit struts to brackets







Fit sports bar to lid before fitting the lid to the car.

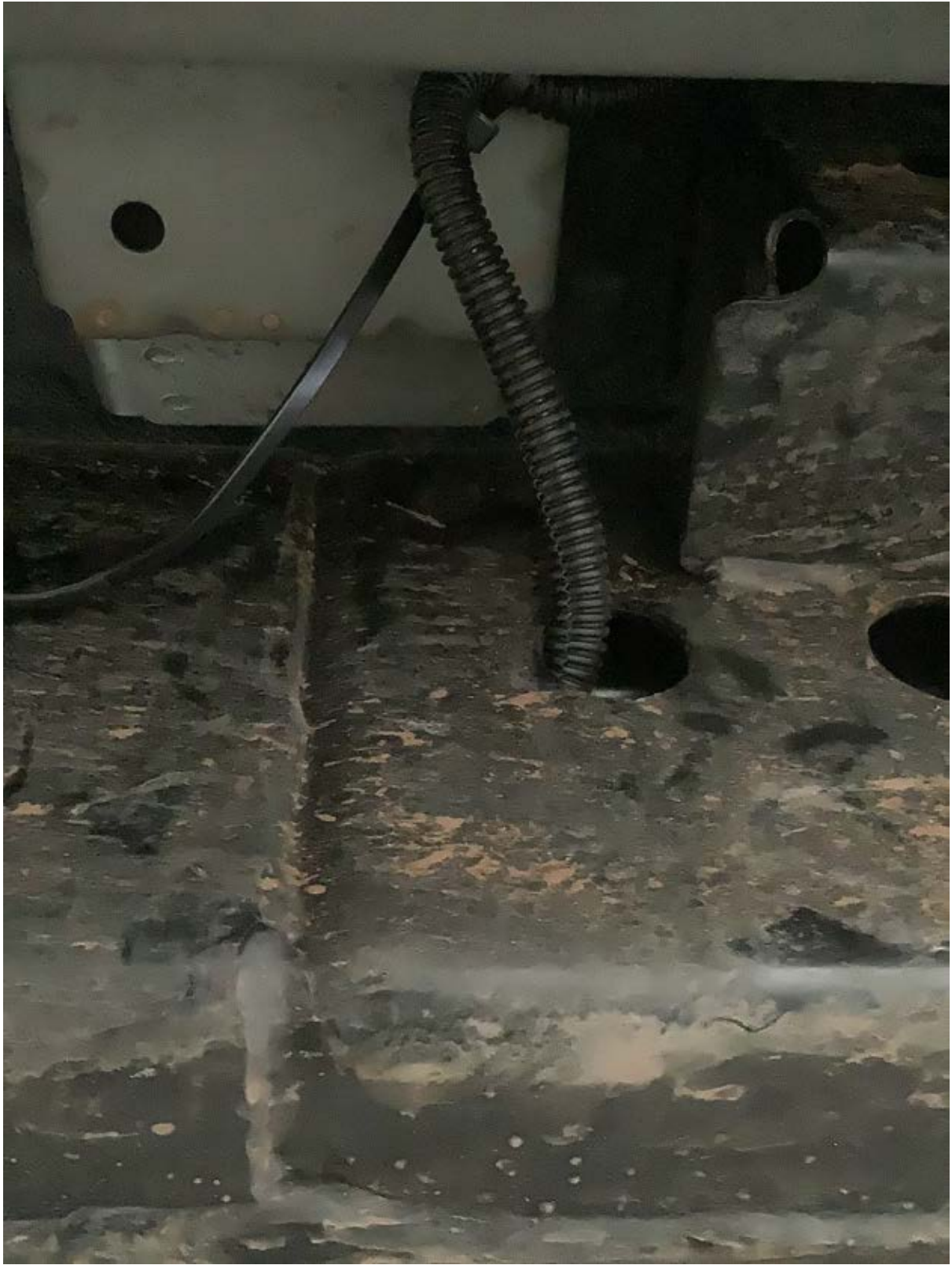
Fit D seal to top of tub front front wall and fit lid to hinges , leave screws loose. Loosen strut brackets on lid and fit struts to them .Locate and align lid to fit evenly on Ute body, Tighten hinge screws and strut bracket screws.



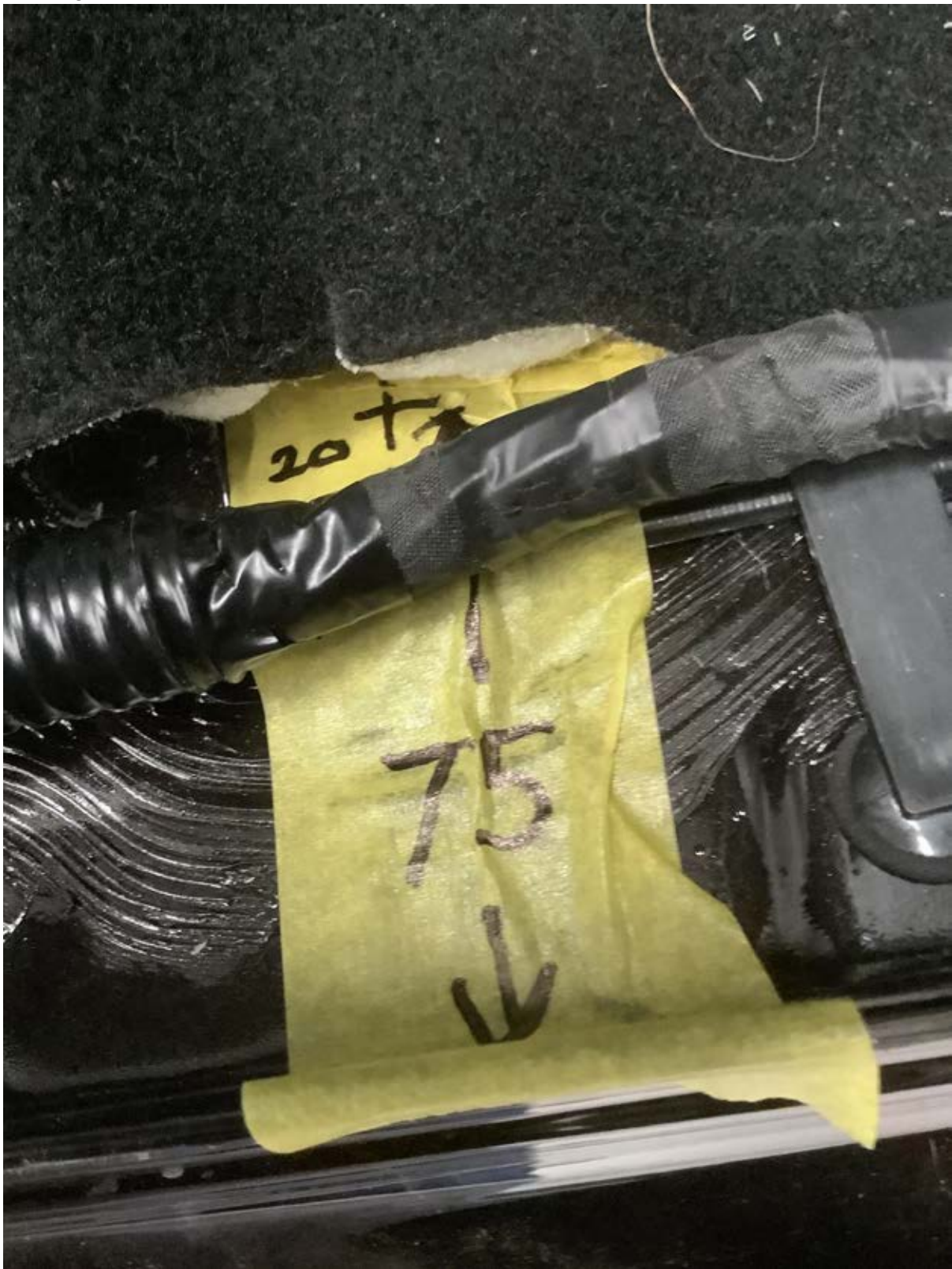


Connect wiring loom to left hand strut wires cable tie a cross to right hand and connect to right hand strut. Bring wires through chassis and out through hole under drivers door





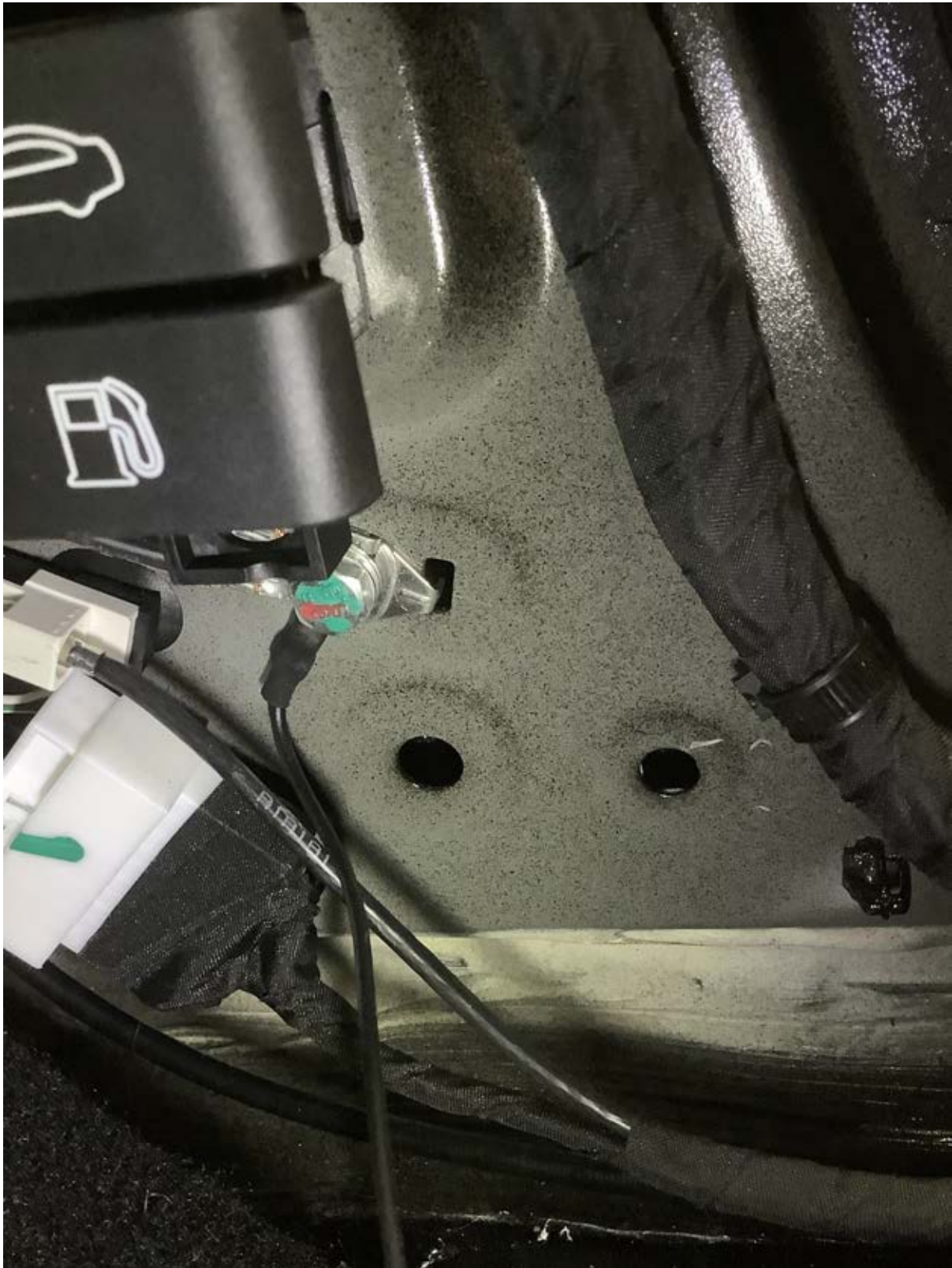
Drill a 9 mm hole through floor just in front of drivers seat and bring wires through this hole and fit grommet.



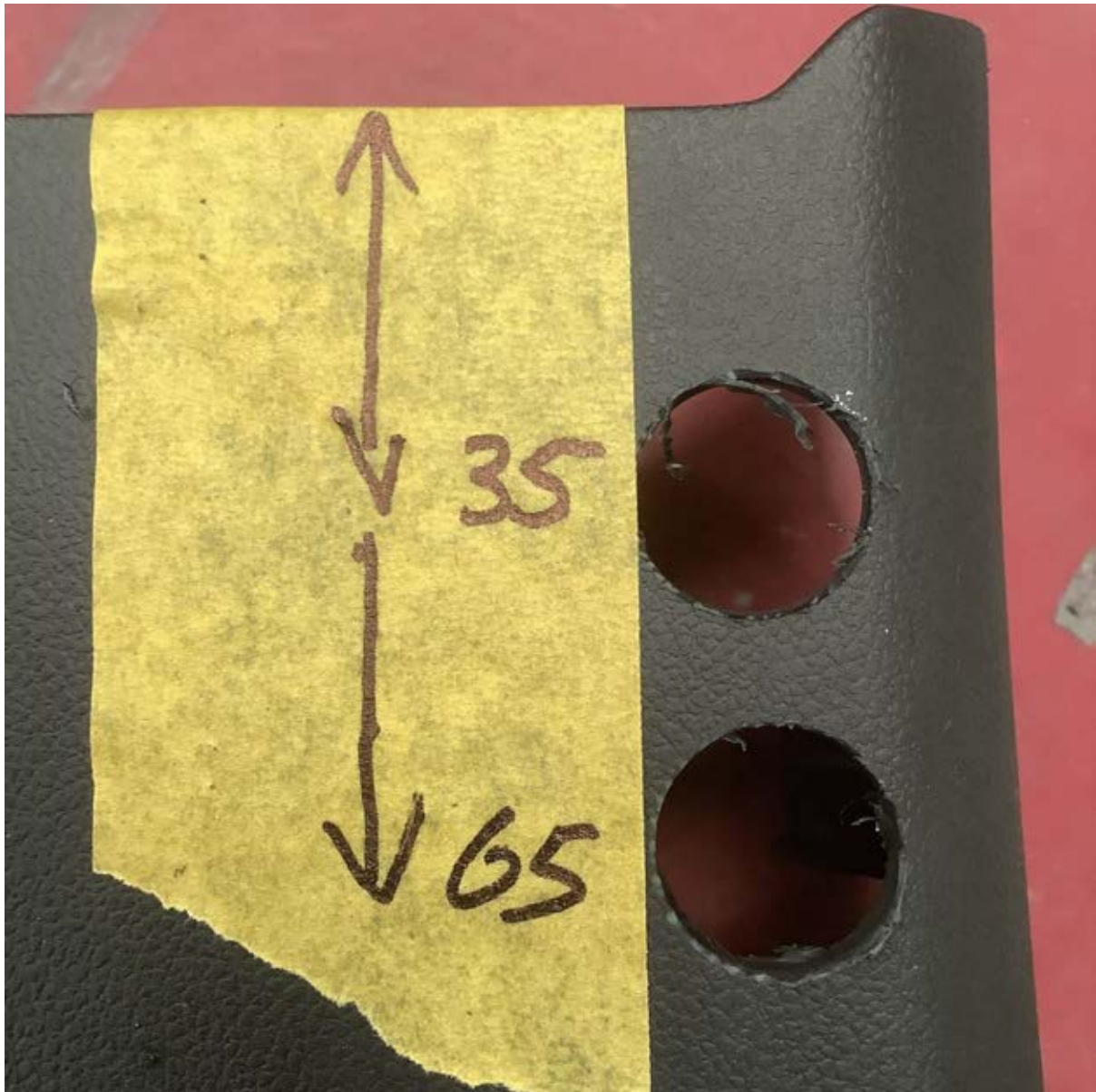
Remove drivers kick panel and fit control box earth wire to this bolt



Bring power wire from battery and cable tie across firewall. Bring wire into cabin through grommet on firewall to the left of brake booster

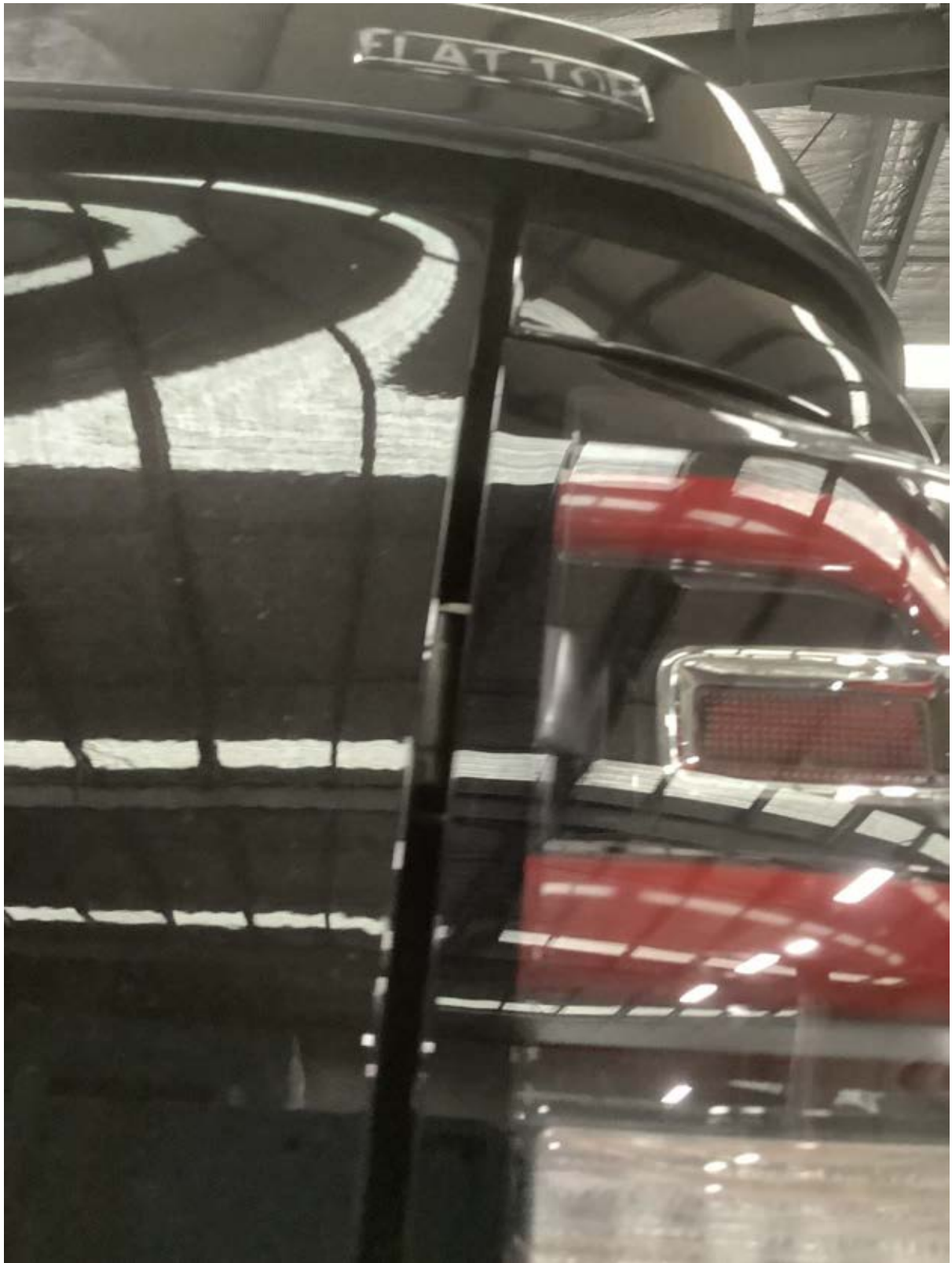


Drill holes for switches in drivers kick panel 20 mm













Remove boots and brackets from sports bar legs. Retap holes to prevent new screws from binding and lubricate when installing



Trim boots and fit rubber seals. Fit sports bar to lid with 8 screws and washers. Fit pastic caps using silicone. Make sure to trim front leg boots to clear rectangular spacer blocks stuck on lid





















