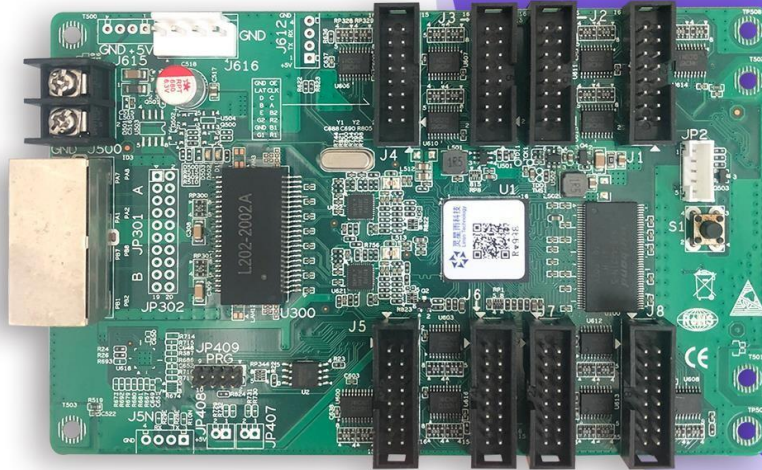




Linsn Technology

Buy website address: <https://reissopto-led.com/products/linsn-rv998-led-screen-receiver-control-card>



RV998 Receiver Specifications

V3.0

Revision History

Document Version	Hardware Version	Revision Date	Note
V3.0	V5	2020/1	New edition

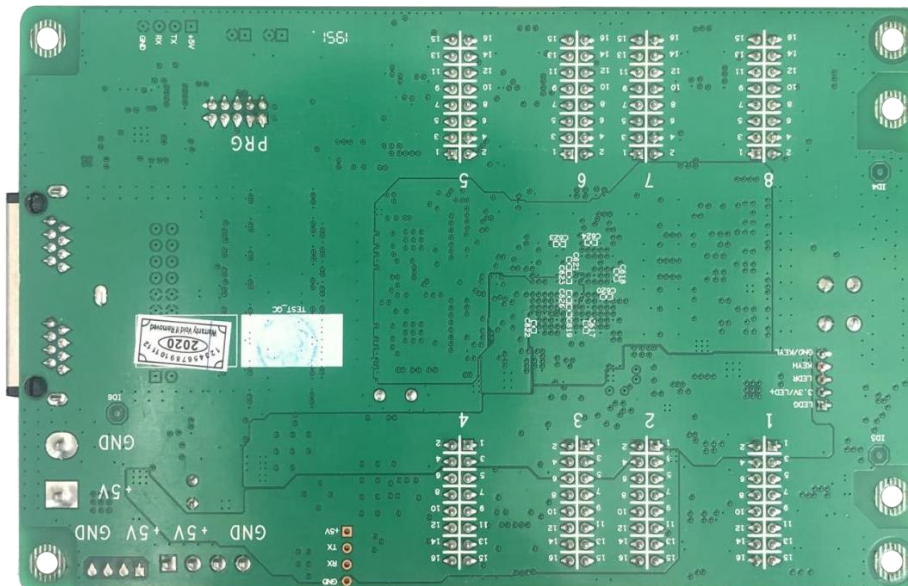
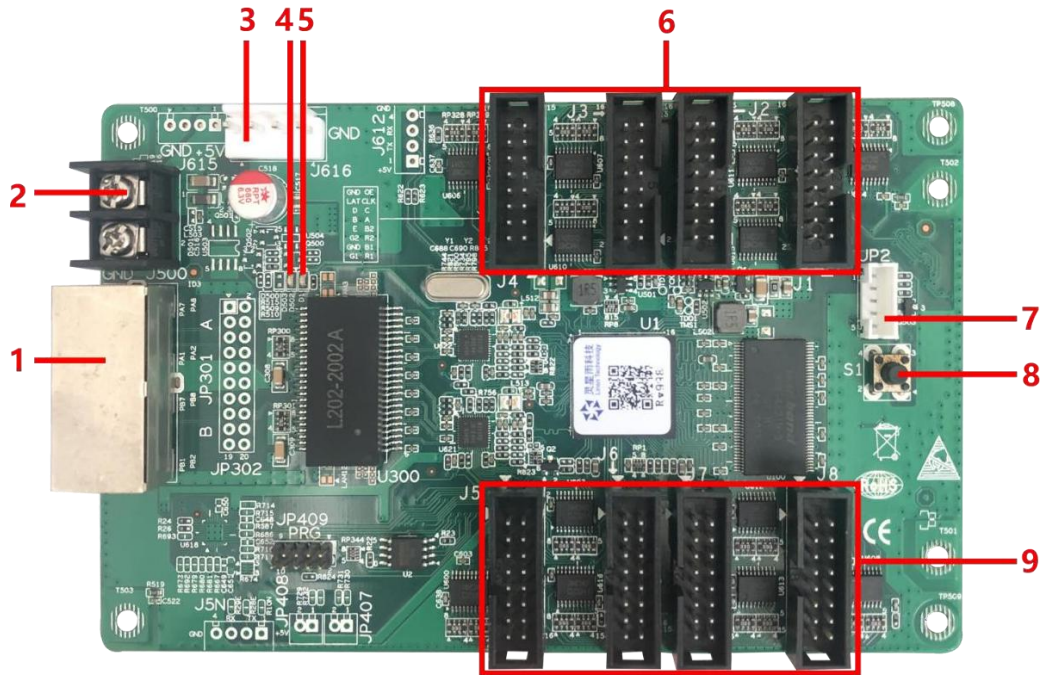
Overview

RV998 is a standardize product for LED screen manufacturer, which is integrated with 8 standard hub75-type connectors and does not require an extra hub card. One card supports up to 256*512pixels and up to 16 sets of RCG data

Functions and features

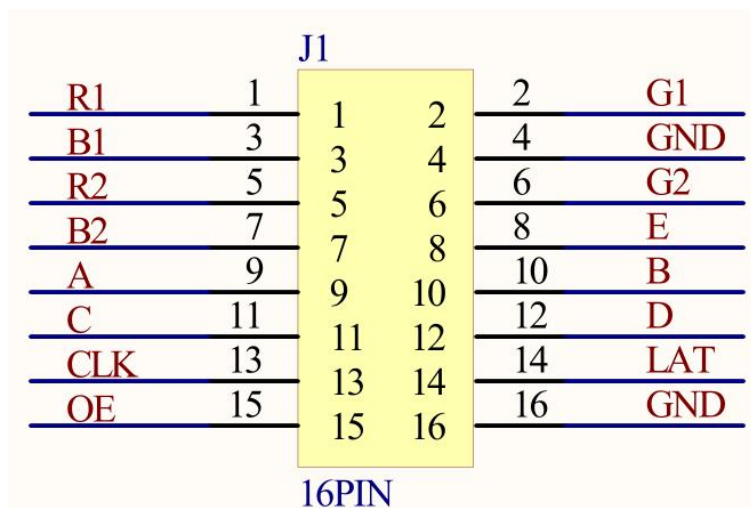
1. Single card can support 16 group of RGB data output mode
2. Maximum supports 256*512(Please note that there are recommended values depending on the design of LED screen pixels)
3. Supports brightness calibration pixel by pixel and single-card color space conversion
4. Supports network cable BER test
5. Supports configuration file read back
6. Supports 138 decode, 595 serial decode and so on
7. Realizes high refresh and high gray level effect

Appearance



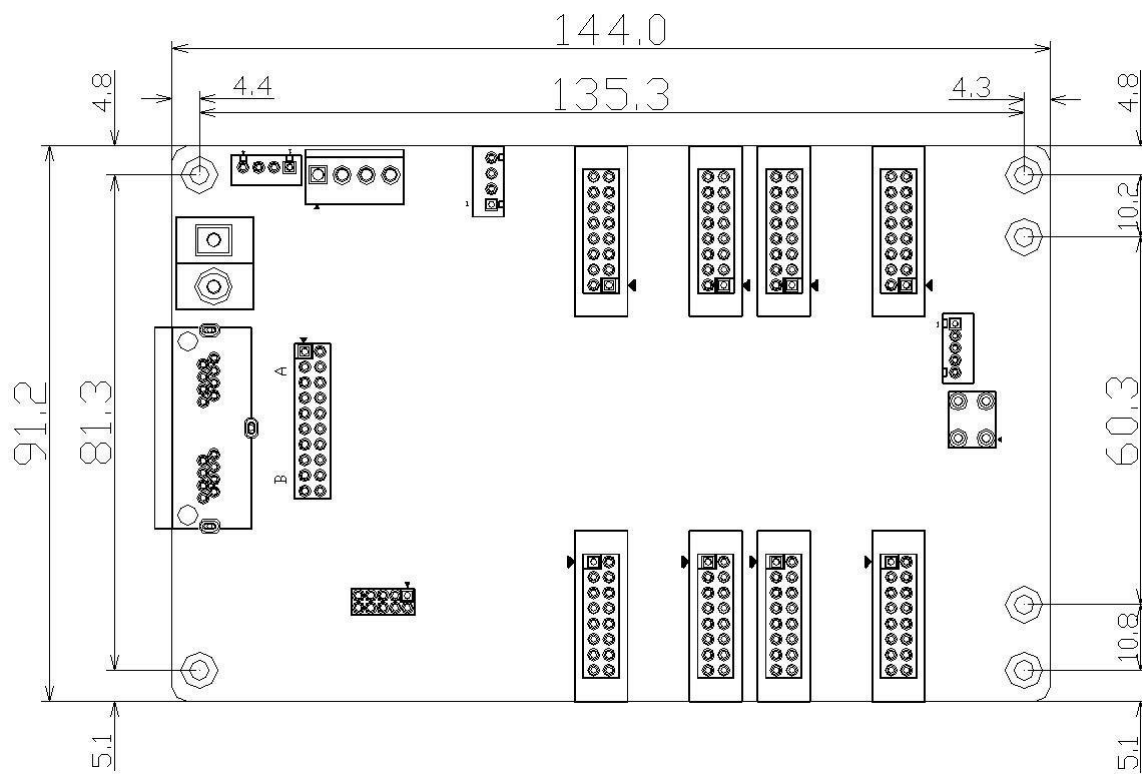
No.	1	2	3	4
Description	Gigabit port	Power connector	Power port	Red power indicator
No.	5	6/9	7	8
Description	Green indicator	Hub75 Connector	Self-test extension port	Self-test button

Pinouts



/	R1	1	2	G1	/
/	B1	3	4	GND	GND
/	R2	5	6	G2	/
/	B2	7	8	E	Row selection signal
Row selection signal	A	9	10	B	Row selection signal
Row selection signal	C	11	12	D	Row selection signal
Scan clock	CLK	13	14	LAT	Latch
Display enable	OE	15	16	GND	GND

Dimension



Specifications

Capacity	256X512 Pixels	
Power	Input Voltage	DC4.5V ~ 5.5V
	Rated power consumption	3W
Working	Temperature	-20°C ~ 70°C
Environment	Humidity	0% ~ 95%
Physical	Dimensions	144.0 X 91.2mm
Dimensions	Weight	94g
Packing Info	Packing	Each card packed with small red foam bag, and 100pcs per carton
	Carton Dimension	622.0mm × 465.0mm × 176.0mm
	Carton Weight	12.2 kg

END