

Magic Light Pro⁺

Bleaching accelerator



Congratulations!

You have become the owner of the most advanced Magic Smile lamp for in-office teeth whitening, an excellent teeth whitening accelerator, Magic Light Pro+.

Pulp Overheating Protection Technology

Magic Light Pro+ uses the safest LED cold-blue spectrum light and a temperature control system to prevent pulp overheating. Pre-programmed modes help the lamp to regulate the gel surface temperature to 41°C - 42°C (106°F -108°F) ensuring that both the tooth surface and intra-pulpal temperature remain lower. The pulp microcirculation (blood circulation in the pulp chamber) serves as a heat dissipation mechanism and should be considered. All this allows us to maintain a normal pulp temperature of 35°C - 37°C (95°F - 99°F).

Why is this so important? The use of light activation with some halogen lamps, plasma arc lights, and laser lamps can increase tooth-surface temperature significantly, by more than 20°C/36°F, reaching up to 60°C/140°F or more. Intra-pulpal temperature can increase by more than 5°C/9°F. Such high temperatures can lead to significant tooth sensitivity or irreversible pulpal damage.

Gesture & One-Touch Control

The Magic Light Pro+ is designed to save your time and simplify the procedure. The lamp features swift, one-touch control to initiate bleaching, and the process is easily navigable with gesture controls. It's easy. Simple operation eliminates the need for complicated training - just select the mode that matches the gel's name and begin bleaching. With a simple wave of your hand, you can start and pause the procedure.

Content:

1. Introduction _____	1	6. How to Use _____	6-7
2. Packing List _____	2	7. Custom Settings Mode _____	8-9
3. Specifications _____	3	8. Safety & Service _____	10
4. Assembly Guide _____	4	9. Storage & Recycling _____	11
5. Parts Description _____	5	10. Contacts & Symbols _____	12

Packing List:

1. Lamp head - 1pc
2. Lamp body - 1pc
3. Rotational arm- 1pc
4. Wheels with stopper - 4pc
5. Power cable - 1pc
6. Protective goggles - 2pcs
7. Assembly kit - 1pc
8. Fabric cover - 1pc



Specifications:

- Power Density: 300-400 MW/cm²
- Blue Spectrum Wavelength: 460-490 nm
- Number of LEDs: 12 pcs
- Adjustable Temperature: 35°C - 42°C (95°F - 108°F)
- Power: 60W
- Weight: 27 kg (60 lb)

Working Conditions:

- Temperature: 10°C - 40°C (50°F - 104°F)
- Humidity: 10% - 90% (no condensation)
- Pressure: 70 kPa - 106 kPa

Pre-programmed Modes:

Use these modes for one-touch control of the lamp. Select a mode based on the type of Magic Smile Gel you are using: **44% CARBAMIDE PEROXIDE**, **25% HYDROGEN PEROXIDE**, or **38% HYDROGEN PEROXIDE**. Magic Light Pro+ will automatically adjust the time, temperature, and power settings to the optimal values for the chosen gel.

Custom Settings Mode:

Tailor the lamp to your specific requirements and unlock its maximum power.

In some cases, you might encounter unique situations with a patient's teeth. We have provided the flexibility to customize the temperature, power, and time settings to meet the specific requirements of a procedure.

For instance, you can set the power to its maximum for bleaching vital teeth.

CAUTION: Please read before commencing the Lamp assembly.

The Rotational arm features a spring-loaded mechanism, so it's important to delicately unwrap it. Use one hand to untie the wrapping film, while the other gently presses down the rotational arm parts to ensure a controlled release and prevent any sudden deployment during the unwrapping process.

Assembly Guide:

Check the video guide how to assembly the Magic Light Pro+

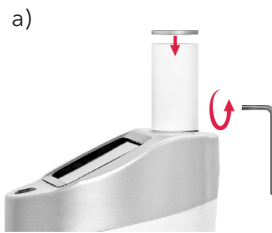


1. Connect the Wheels (4) to the Lamp body (2).

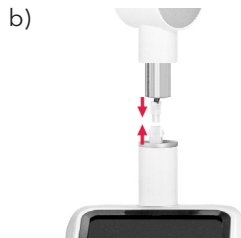


Use the wrench from the assembly kit (7).

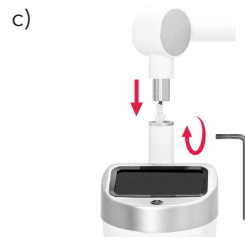
2. Connect the Rotational arm (3) to the Lamp body (2).



Begin by gently loosening the hexagonal sleeve. Do not fully unscrew it. Then, place the protective ring on the body tube.

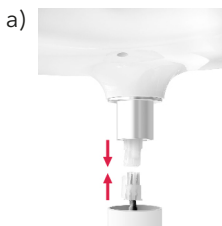


Connect the Arm wires to the Body wires and ensure a secure connection until they click.

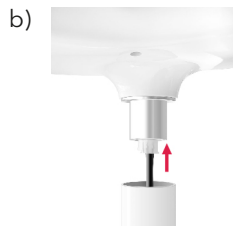


Insert the Arm into the Body and secure the connection using a hex key.

3. Connect the Lamp head (1) to the Rotational arm (3).



Begin by connecting the Head wires to the Arm wires. Securely connect the connectors until they click.



Then, insert the connectors into the head.



Next, insert the Head into the Arm, aligning the holes of the Head with the corresponding holes of the Arm. Secure the connection by using a screwdriver.

Magic Light Pro+ Bleaching accelerator



- 1.1 - Start/Stop button
- 1.2 - LEDs
- 1.3 - Temperature sensor
- 1.4 - Time display
- 1.5 - Temperature display
- 1.6 - Gesture sensor (Pause/Start)

- 2.1 - Power button
- 2.2 - Touch screen
- 2.3 - Power port

How to Use

[Check the video guide how to use the Magic Light Pro+](#)



Device Preparation

1. Read the Safety Precautions. Ensure that the lamp is carefully assembled, and remove the packaging films.
2. Connect the Power cable (5) to the Power port (2.3) and then plug it into the socket.
3. Position the lamp for convenient interaction with the patient and lamp operation.
4. Press the Power button (2.1).

Attention! Ensure that the plug is easily accessible so that you can quickly pull it out in case of an emergency.

Procedure

1. Position the patient comfortably and apply the bleaching gel according to the instructions of the gel.

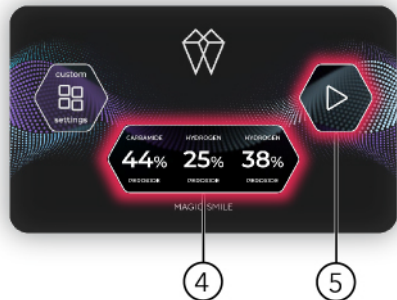
2. Put on safety goggles (6) for yourself and the patient.

3. Position the Lamp head (1) near the patient's mouth at a distance of 2-3 cm and center the diodes (1.2) relative to the mouth both vertically and horizontally.

4. To choose a mode on the Touch screen (2.2), press the button with a gel name according to the gel you have applied.

5. To start the procedure press the "Start" button.

A minute before the end, the lamp will beep and turn off by itself.



Typically the procedure involves a few applications of the gel. After replacing the gel, select the mode according to the new gel and press the "Start" button.

6. At the end of the procedure, move the Lamp head (1) away from the patient. If the next procedure is not scheduled soon, you can turn off the lamp and then cover the Lamp head with a Fabric cover (8).

To pause the procedure:

- wave your hand over the Lamp head (1), in the area of the Gesture sensor (1.6). To restart the process, wave your hand again.



- press the "Pause" button on the Touch screen (2.2).



To completely stop the procedure and reset the timer:

- press the Start/Stop button (1.1) on the Lamp head (1).
- press the "Back arrow" button in the menu.

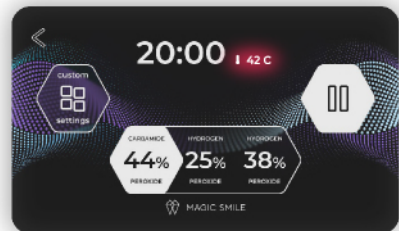


Temperature display

The real-time temperature is shown on the Temperature display (1.5) of the Lamp head in Celsius.

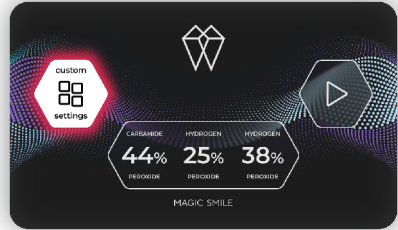


The pre-programmed temperature is shown on the Touch screen (2.2) in either Celsius or Fahrenheit.



Custom Settings Mode

To enter CS mode, press the “Custom settings” button.



Power Mode - allows to set the required power and not limit the temperature.

To select the “P Mode”, press the center button and use “+/-” buttons to set the desired level. The power range is from 40% to 100%, with 5% increments.



Temperature Mode - allows to set the required temperature and the lamp will automatically select the power.

To select the “T Mode”, press the center button and use “+/-” buttons to set your desired temperature. The temperature range is from 35°C to 42°C, with 1-degree increments.



When one of the modes is selected, the second is blocked to protect against accidental switching.

To set the required treatment time, press the “Time” button and use “+/-” buttons. The time range is from 1 to 30 minutes, with 1-minute increments.



Menu Appearance Customization

To enter appearance settings, press the "Gear" button.



To choose a dark or light menu theme, press the "Sun/Moon" button.

To select temperature unit settings, press the "F/C" button.



The settings will be saved after the procedure is completed and the lamp is turned off.

Unlock Code Setting

Enable unlock code

1. Press the "Key" button.
2. Enter the code .
3. Press the "Confirm" button.
4. Enter the code again to verify and click the "Confirm" button.

Disable unlock code

1. Press the "Key" button.
2. Enter the current code.
3. Press the "Confirm" button.

Change unlock code

1. Disable unlock code.
2. Enable unlock code with the new code.

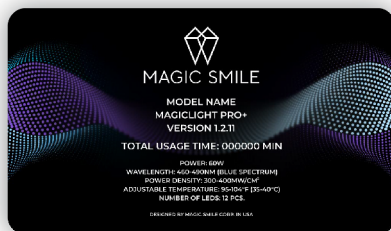


If you forgot your unlock code, contact Magic Smile support and we will help you to unlock your lamp.

Total Usage Time

To see the total usage time, press the “About” button.

Please, pay attention, the new lamp can show some minutes of usage because of the presale testing.



Safety Precautions

Please read this manual carefully before using the lamp. Also read the Magic Smile protocols and Pro kit instructions before providing a teeth whitening treatment. Careful preparation will help you to avoid the risk of harm to yourself or the patient, or damage to this device.

Before use make sure:

- the lamp is carefully assembled and all wires, parts are well fixed.
- there is no dirt or streaks on the surface of the diode block
- the lamp is not wet or too cold (below 10°C/50°F).

Use the supplied goggles to protect your eyes and the patient.

Point the lamp directly at the bleaching area and do not look directly into the lamp light.

Service & Maintenance

Clean and disinfect the lamp after each treatment.

Do not spray or pour liquid directly onto the device.

Use paper towels or a soft cloth dampened with detergent to clean.

Do not use abrasive cleaners.

Do not use the lamp if the power cord or other parts of the device are damaged.

Do not open the protective panels of the lamp.

Maintenance should only be carried out by qualified specialist.

Electromagnetic fields (EMF) and electromagnetic compatibility (EMC)

This device complies with international and national EMC laws and standards for this type of device when used as intended and in proper condition.

Third party devices that do not meet EMC standards may affect lamp performance.

The use of accessories and cables not specified in the instructions may increase the emission level or impair the lamp's EMF immunity.

Do not use other electrical devices at the same time near the lamp. If this cannot be avoided, then follow the correctness of their work.

To avoid electric shock, do not open the protective panels of the lamp body or head.

Storage & Transportation

Store or transport the lamp in a clean, well-ventilated area at -10°C - 50°C (14-122 F) and 10% - 90% relative humidity.

For more convenient transportation, the device can be partially disassembled. Disconnect the rotational arm with connected head from the lamp body.

Attention! The lamp must reach room temperature and humidity before use.

Recycling

The device is made of high quality materials and components that can be recycled and reused.

For detailed recycling information, contact your local waste disposal company.

This device must not be disposed of with household waste.

In order to avoid negative impact on the environment and human health, follow the rules for separate disposal of electrical and electronic devices

Symbols



Indoor use only



Keep dry



Storage Conditions:

Temperature: -10°C - 50°C (14°F - 122°F)



Fragile



Storage Conditions:

Humidity: 10% - 90% (no condensation)



Upward



Storage conditions:

Pressure: 50 kPa - 106 kPa



Dispose in accordance
with the WEEE Directive

Contacts

Magic Smile Corp.

16192, Coastal Highway, City of Lewes, County of Sussex, 19958, State of Delaware, USA.

Mailing address: 1100. Market St., Chattanooga, Tennessee 37402

Email: info@magicsmilepro.com

www.MagicSmilePro.com



(c) 2023 Magic Smile Corp. All rights reserved.