

# HOME GEMMOLOGY

Rui Galopim de Carvalho FGA DGA



ONLINE LESSONS PROGRAM

May-June 2024



*About the cover:  
A 19th century insignia of the Order of the Golden Fleece, featuring  
diamonds and an oval pink sapphire  
Photo © Rui Galopim de Carvalho  
Royal Treasure Museum, Lisboa*



## Table of Contents

Scope	3
Workshop Specs	4
Timezone Chart	4
Sessions and Contents	5
Target Audience	6
Learning Tools and Tips	6
Qualifications' Disclaimer	7
Refunds / Cancellation Policy	7
Taxes	7
Bookings	8
Contacts	8



*Black precious opal from Lightning Ridge, New South Wales, Australia  
© Cody Opal*

## Scope

The success of offering independent sessions rather than a multiple-session fixed-date course-type program, was further increased by enabling the participant to freely choose/swap between the 9 am or 7 pm session as more convenience!

We'll continue the 2024 program with four sessions with the usual duration of 60 minutes, plus an optional 15 minutes for a quiz and Q&A on every Tuesday from May 28 until June 18, covering a variety of topics: one brand new topic, on the history of ruby, and three (synthetic diamonds, opals and cultured pearls) that were extracted, expanded and edited from past seminars (as indicated).

As usual, the sessions were specially crafted to provide tools and product knowledge for sales associates in story telling but are also of interest to jewellery, antiques and gemmology student or professional looking for gem-related information in plain language but with very solid fact-based content.

This short-duration live format in an online room with limited seats is learning-friendly as it promotes engagement with the tutor and colleagues in a dynamic and relaxed environment.



*Rare golden nonbead cultured pearls also known in the trade as golden keshi cultured pearls © Assael*



*The pink to red spinels from the Pamir mountains were historically known as "Balas rubies" © Christie's*

## Home Gemmology 2024-2 Learning Sessions

Tutor	Rui Galopim de Carvalho FGA DGA
General Scope	Gemstones, Jewellery, Story Telling
Level of Training / Format	Basic / Online "Live"
Online Platform	Zoom
Groups (classes)	2 (G1 and G2)
Session Duration	60 min + 15 min Q&A
History of Ruby	28 May
The World of Opals	4 June
Synthetic Diamonds	11 June
Saltwater Cultured Pearls	18 June
Hours*	G1 (9 am) or G2 (7 pm) Lisbon/London
Price per lesson**	45.00 €

\* check timezone chart below ; \*\* inclusive of VAT (23%), check page 7 for tax information.

**Tuesdays      28 May      &      4 11 18 June**

TIME ZONE	Group 1	Group 2
Lisbon /London	9:00-10:00	19:00-20:00
Paris / Rome / Copenhagen	10:00-11:00	20:00-21:00
Helsinki	11:00-12:00	21:00-22:00
Dubai	12:00-13:00	22:00-23:00
Mumbai	13:30-14:30	23:30-00:30
Bangkok	15:00-16:00	01:00-02:00*
Hong Kong	16:00-17:00	02:00-03:00*
Tokyo	17:00-18:00	03:00-04:00*
Melbourne	18:00-19:00	04:00-05:00*
Wellington**	20:00-21:00	06:00-07:00*
Rio de Janeiro / Buenos Aires	05:00-06:00	15:00-16:00
Los Angeles	01:00-02:00*	11:00-12:00
New York	04:00-05:00*	14:00-15:00

\* next calendar day

## Lessons and Contents

60-minute sessions + optional 15 minute for Quiz and Q&A.



### May 28 - History of Ruby

Terminology for ruby and other red transparent gemstones in historical times in comparison with modern gemmological standards. The large “balas rubies” and the saturated “spinel rubies”. Historical occurrences and geographic origin challenges. The early synthetics.



### June 4 - The World of Opals

What are opals. Basic mineralogical classification. Opal gem varieties and trade terminology. History and main occurrences. The complexity of understanding opal value factors. Main treatments and imitations.

*Disclaimer: Edited from the “Other Coloured Gemstones” seminar*



### June 11 - Synthetic Diamonds

The history of synthetic diamonds. HPHT and CVD crystal growth methods and post growth modifications. Gem-quality laboratory-grown diamonds today, marketing narratives and identification challenges. CIBJO standards in diamond terminology.

*Disclaimer: Edited from the “Diamonds” seminar*



### June 18 - Saltwater Cultured Pearls

What are cultured pearls. Cultured pearl nomenclature. Early history in Japan and elsewhere. Main saltwater pearl producing molluscs, pearl farming, current production and their characteristic pearls (Akoya, South Seas, Tahitian, Fijian and Cortez). Discussing sustainable luxury.

*Disclaimer: Edited from the “Marine Gemstones” seminar*



## Target Audience and Pre-Requisites

- Jewellery sales associates (product knowledge, story telling)
- Marketing/ communication (story telling)
- Gemmology and jewellery students

### Pre-Requisites:

Computer/ mobile device with internet access, intermediate English proficiency, interest and motivation to participate.

## Learning Tools and Tips

### Recommended Tools

Computer or mobile device with internet access and with Zoom app installed; headphones or earplugs for better audio focus; paper or digital notebook; comfortable and peaceful location to log in and engage in the session.

### Session Dynamics

Sessions are broadcast live via Zoom with on-screen presentations; participants are gathered in a meeting room with camera and microphones enabled; although muting microphones is advised during session, participants are encouraged to ask questions at anytime or at the end in the 15-minute Q&A period.

### Further Recommendations

Confirm your local the time for the sessions according to your timezone. Please note that daylight savings time (DST) may apply in your area, but the Zoom meeting link manages that automatically according to timezone pre-defined on your device. It is recommended that participants log in a few minutes before the session as the proceedings start sharply on the hour. Late comers are kindly asked not to greet the class if already in session.

### Student Kit

Dedicated list of recommended further reading for each lesson.

### Audio/Video Recording

Due to privacy protection legislation, both audio and video recording of the sessions and/ or of the participants is strictly not permitted.

*In the watermark: young hatchery-breed pearl producing molluscs in the pristine waters of Fiji  
© J Hunter Pearls Fiji*

## Qualifications' Disclaimer

Although the tutor is an accredited training professional (certified by IEFPP [www.iefpp.pt](http://www.iefpp.pt) CCP no. F658260/2017) this workshop is a private program without a final graded test, therefore not eligible for official qualification diploma or training certificate. Nevertheless, a declaration of participation will be issued at the end of the workshop.

## Refund / Cancelation Policy

100% refund for cancelations until seven (7) days before the beginning of the workshop.

## Taxes

VAT (23%) applies to all end consumers as well as businesses established in Portugal.

Businesses in the European Union (EU)\*: VAT is not added for businesses with a verified VAT number (VIES). Price per participant /per lesson: 36.59 €, excl. VAT (EU member states' reverse charge rules apply).

Businesses outside the EU\*: VAT is not applicable. Price per person/per lesson is 36.59 €. Legal business name and billing address are required for invoicing.

\* *Please contact [registration@ruigalopim.com](mailto:registration@ruigalopim.com) for legal tax procedure and invoicing.*



*A selection of loose and set CVD-grown colourless and coloured synthetic diamonds grown by De Beers © Lightbox*

## Booking

Price per session 45.00€ or book all four sessions for 150.00€ (save 30.00€). VAT is included (see page 7 for full information on taxes for end consumers and businesses). For other payment options or corporate/business accounts for invoicing (legal tax info on page 7), please contact [registration@ruigalopim.com](mailto:registration@ruigalopim.com).

Select your preferred time for the class (9 am or 7 pm) but feel free to join any at your best convenience.

Secure your seat right away by submitting your payment now



### HISTORY OF RUBY

MAY 28 (G1) 9 am or (G2) 7 pm London/Lisbon

[BOOK HERE](#)



### THE WORLD OF OPALS

JUN 4 (G1) 9 am or (G2) 7 pm London/Lisbon

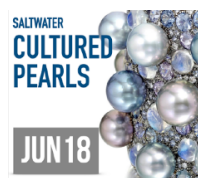
[BOOK HERE](#)



### SYNTHETIC DIAMONDS

JUN 11 (G1) 9 am or (G2) 7 pm London/Lisbon

[BOOK HERE](#)



### SALTWATER CULTURED PEARLS

JUN 18 (G1) 9 am or (G2) 7 pm London/Lisbon

[BOOK HERE](#)



### ALL FOUR SESSIONS

[BOOK HERE AND SAVE](#)



Rui Galopim de Carvalho FGA DGA  
Apart. 26020 EC Lapa  
1201-801 Lisboa - Portugal



# TREASURES

Royal Gems & Jewellery  
International Colloquium



ROYAL TREASURE MUSEUM  
Lisbon 8th, 9th November 2024

8-9 November  
2024

**Save  
the  
Date**

**Speakers  
and Program soon!**



Com o Alto Patrocínio  
de Sua Excelência

Under the High Patronage of the  
President of the Portuguese Republic



O Presidente da República