



KINGDOM'S NIGHT
LENORMANS
ADD-ON CARDS



GUIDEBOOK FOR YOUR
KINGDOM'S NIGHT LENORMAND
ADDITIONAL CARDS

THE KINGDOM'S NIGHT

Step into the mesmerizing world of the *Kingdom's Night Lenormand* where the enchanting allure of a nocturnal atmosphere unfolds the mysteries of a beautiful bygone era.

Immerse yourself in the medieval kingdom shrouded in the cloak of darkness, where whispers of enchantment echo through cobblestone streets and ancient castles. With each card in the *Kingdom's Night Lenormand*, you will embark on a journey of divination, uncovering the secrets and wisdom hidden within the depths of the night.

Every card is a work of art, meticulously crafted to present a piece of the mystical kingdom waiting to be uncovered. From the flickering glow of the illuminated castle to the picturesque port, each illustration captures the essence of a moonlit night in a way that will truly captivate your intuitive senses.

This extraordinary card deck is unlike any other. With its 36 additional Lenormand cards it extends the traditional *Kingdom's Night Lenormand* deck. Each card becomes a portal into the medieval kingdom, inviting you to seek guidance, find clarity, and tap into the ancient wisdom that lies dormant within.

Yours, Kathleen Bergmann

INTRODUCTION TO THE ADDITIONAL CARDS

The 36 *Kingdom's Night additional cards* expand the classic collection of Lenormand cards while preserving the tradition and wisdom of the old symbols. Furthermore, they introduce many useful meanings that sensibly continue and enrich the venerable spectrum of symbols.

Although the symbolism of *Lenormand cards* is profound and allows for comprehensive interpretation, like any oracle system, it has weaknesses and contradictions. Some significant meanings, such as a »kiss« or a »power struggle«, are not represented among the 36 traditional symbols. Other meanings that may seem contradictory are combined within a single card, making nuanced interpretation challenging. In particular, there is an issue with the *Fish* card, as it reflects both the emotional and psychic aspects as well as the financial aspect.

Moreover, many Lenormand symbols have a considerable number of different meanings, so multiple interpretations may be applicable to certain questions. An example of this is the *Flowers* card, whose meanings range from a »date« to »decadence«. The *Kingdom's Night additional cards* largely compensate for these weaknesses by adding necessary and helpful meanings. Cards that have an excessive number of meanings are relieved by being »transferred« to one of the new symbols. For example, the *Seal* card now represents »contracts« instead of the *Ring*. Therefore, the *Ring* can exclusively stand as a card for »relationships and connections«. The range of meanings associated with the aforementioned *Flowers* card is also streamlined. Among other changes, its keywords like »unfolding« and »growth« are transformed into the *Butterfly*. The concept of a »date« is transferred to the *Salon* card.

Similarly, several meanings that overloaded old symbols now have their own representatives. This makes the interpretation of the cards more unambiguous and their answers more precise than ever before. Contradictions, such as those found in the *Fish* card, are also resolved. The concept of »money« is represented by a single symbol, the *Coins*, so the *Fish* card now exclusively represents »internal soul related processes«. Thanks to this unequivocal allocation, the user immediately gains a clear picture when interpreting.

The *additional cards* introduce five new figures, two male and two female. The *Hermit* and the *Healer* can be used as personal cards, similar to the *Bear* and the *Snake*. They also encompass additional non-personified aspects. The *King* and *Queen* card is a new symbol, which can serve as a representative for a couple or any type of personal connection.

The additional exchange cards for the *Gentleman* and the *Lady* serve as suitable representatives for homosexual relationships. However, they can also serve as an expanded circle of individuals in other contexts. More information on this is provided in the chapter on exchange cards for the *Gentleman* and the *Lady*.

The *Staircase* card is defined as a *functional card*. Its meaning varies depending on which side the neighboring cards are placed. In this respect, it behaves similarly to the *Mice*, *Scythe* or *Fox* cards, which also have two different sides. The *Staircase* card has a positive and a negative aspect as well. Furthermore, the deck includes three cards that hold special significance: the *Poison* and the *Black Feather* as danger cards, the *Portal* as an opportunity card, and the *Angel Wings* as a miracle card.

Since clocks did not exist in the medieval kingdoms, I chose an *hourglass* as a motif. It represents the theme of »time« as effectively as you may know from the *additional card Clock* in the *Kingdom's Night Lenormand*. If you are familiar with this symbolic world, you will encounter some symbols again in the *Kingdom's Night additional cards*, including the *Portal*, the *Mask*, and the *Mill*, for example. Other cards have been replaced to make the symbolic world more suitable for the ancient kingdom.

However, the idea of introducing some fresh air also played a role in the selection of symbols. As a result, there are now symbols that have not appeared in any other Lenormand deck before. These include, for example, the *Harbor*, the *Castle*, and the *Abyss*. These new symbols allow for an enormous variety of possible meanings that were not previously found in the entire scope of *Lenormand cards*.

Beyond my keywords, there is plenty of room for personal interpretations. All of my guidelines are flexible and expandable. It is entirely up to your perception of the symbols to attribute useful meanings to them. Everyone has the freedom to develop individual concepts of the old and new symbolism. Lenormand remains an open system. It is precisely for this reason that I created the *additional cards*.

As I explain in my German book »The Lenormand Check«, the aim is to keep the interpretation world of Lenormand alive and contemporary. Therefore, it is our task as card readers to constantly update the meaning catalog of Lenormand cards and adapt it to contemporary events and thinking. This also means that you can adapt the cards to your personal view and needs. You can customize them for yourself so that they become the very best messenger for you.

TRAVEL THROUGH TIME

When creating the additional symbols, I made sure that they are from the era of Mme Lenormand and taken from the everyday life of that time in the 19th century. Historically, all symbols of the *Kingdom's Night additional cards* are even much older. So they could have been part of a former kingdom in the Middle Ages. It is up to each user of the cards to envision this kingdom and decorate it as imaginatively as you like.

Learn more about the captivating history of some of the motifs in the following time travel. This part is intended as an introduction to the symbolic world of the *Kingdom's Night*. You will learn the meanings of the cards in the next chapter.

MASK

The use of masks in balls and other social events has a long history, dating back to the Renaissance era in Europe. During this time, masks were often worn at masquerade balls, which were elaborate events where attendees would wear masks and costumes and engage in elaborate dances and social games.

One of the primary symbolic meanings of masks at balls was the idea of anonymity. By wearing a mask, individuals could conceal their true identity and take on a new persona for the evening. This anonymity allowed individuals to engage in behaviors and activities that might not be acceptable in their everyday lives, providing a sense of liberation and escape from social norms.

Masks at balls were also associated with the idea of flirtation and courtship. The anonymity provided by masks allowed individuals to engage in flirtatious behavior without fear of social repercussions. In this context, masks were often used to symbolize the playful and flirtatious nature of courtship and romance.

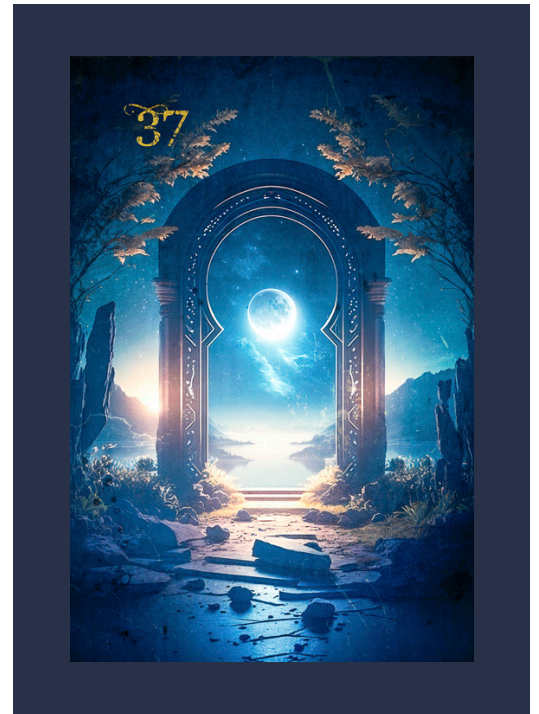


PORTAL

A portal is a symbolic representation of a doorway or gateway that connects two different realms or dimensions. As a symbol, portals are often associated with change, transformation, and the crossing of boundaries. In many mythologies and spiritual traditions, portals are seen as a means of accessing higher states of consciousness or spiritual enlightenment.

They are also associated with journeys of initiation, where the individual passes through a portal as a symbol of leaving their old life behind and embarking on a new path. Portals create a sense of mystery and wonder. They can also be used to symbolize the person's inner journey, as they must overcome their fears and limitations in order to cross the threshold and reach the goals.

The idea of a portal, as a gateway between different realms or dimensions, can be metaphorically applied to significant transitions in monarchy. These transitions may include coronations, royal weddings, diplomatic visits, or the passage of power from one monarch to another. In such instances, the metaphorical portal symbolizes the transition from one phase to another within the monarchy.



POISON

Poison has played a significant symbolic role in history, particularly in the context of monarchy and political power. Here are some of the symbolic meanings associated with poison in medieval culture.

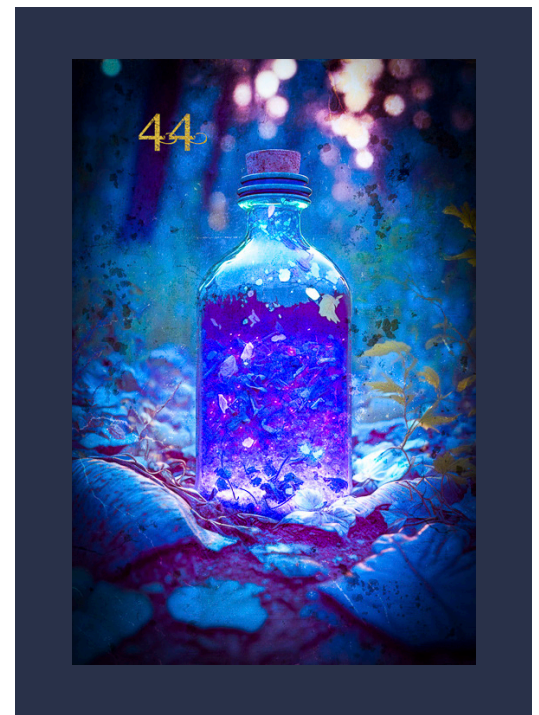
It is often associated with betrayal and treachery because it is a covert and insidious way to harm or kill someone. In worldwide history, many rulers were poisoned by their own family members, advisors, or courtiers who sought to gain power or eliminate rivals.

Poison has also been associated with feminine power and subversion because it was often used by women in positions of power who were unable to use violence openly. Women were historically excluded from political power, but poison offered a way for them to exert influence and control.

SALON

Salons served as hubs for intellectual and cultural exchange, where individuals from various backgrounds, including writers, philosophers, artists, scientists, and socialites, gathered to engage in discussions and debates. Of course, salons also provided space for sharing news and gossip. You could say the salons of yesteryear were the Twitter and Instagram of today.

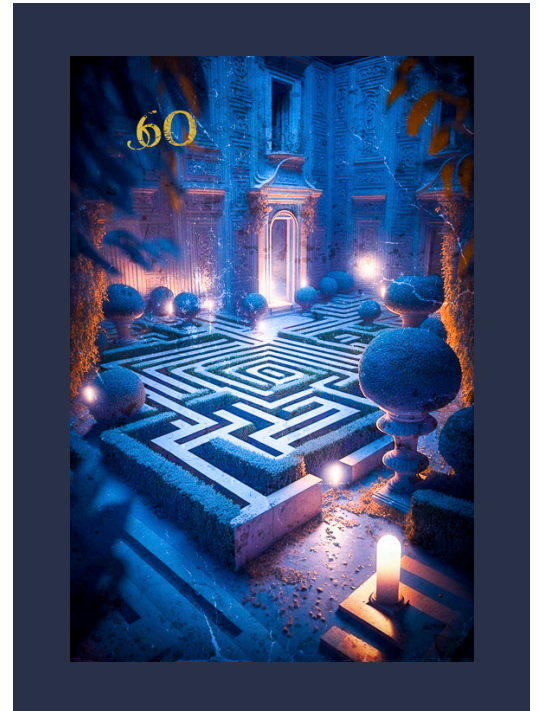
Particularly in 18th-century of France salons played a vital role in the Enlightenment era. They became centers for the dissemination of revolutionary ideals and philosophies of liberty and equality. Salons played a significant role in challenging traditional gender and social norms. Many salons were hosted by influential women known as salonnières. These women held positions of power and influence within society and used salons as platforms to engage in intellectual discourse, challenge societal norms, and shape cultural trends.



LABYRINTH

Labyrinths can be associated with monarchs as symbols of their power, wealth, and grandeur. Elaborate labyrinths were incorporated into the architecture of royal residences, palaces, and gardens. These complex maze-like structures were designed to be visually impressive and served as a testament to the monarch's wealth and artistic patronage. Labyrinths were often enjoyed by the monarch and their guests as a form of entertainment, providing a challenging and enchanting experience. They served as venues for leisurely walks, social gatherings, and games. Labyrinths offered a space for relaxation and amusement, allowing the monarch to engage in leisure activities within the confines of their royal domain.

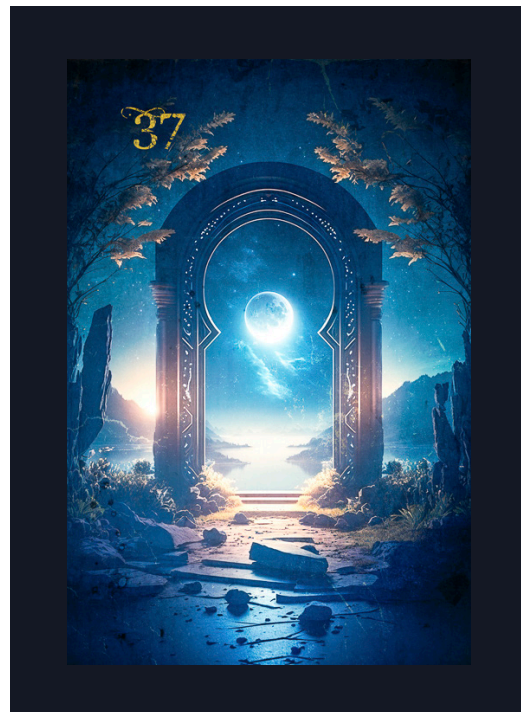
In the superordinate sense labyrinths were sometimes seen as representations of the monarch's ability to control and navigate complex situations. The intricate paths and dead ends of labyrinths symbolized the challenges and obstacles that a monarch must overcome in their rule. Labyrinths served as metaphors for the ruler's ability to maintain order and make strategic decisions.



MEANINGS AND MESSAGES

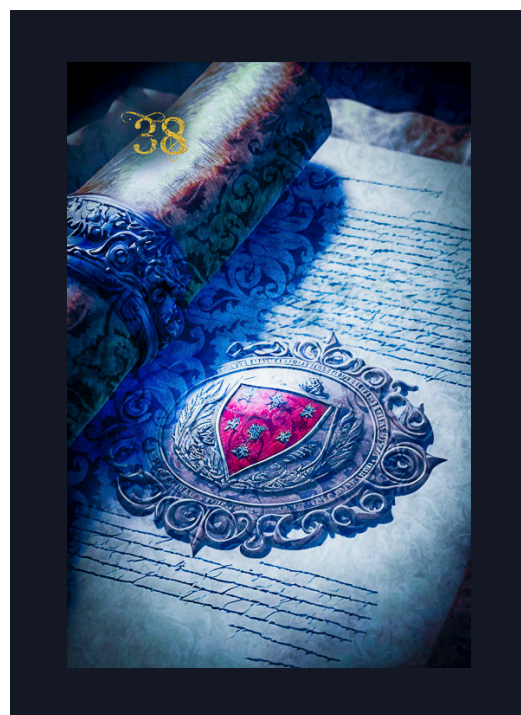
37 PORTAL OPPORTUNITY CARD

- Something new begins; new section or phase of life; change
- Another level, new level
- Be ready for something, open up
- Something is ready, available
- Develop yourself
- Open something
- New opportunities, chances
- Access, entrance
- Exploration
- Wonder



38 SIGNET

- Authentication
- Protection
- Seal the deal
- Legacy
- Ownership
- Identity
- Personalisation
- Make a firm commitment



39

COMPASS

- Plan
- Strategy
- Orientation
- Guidance
- Search
- Location
- Instruction
- Aspiration, intention, goal
- Navigation

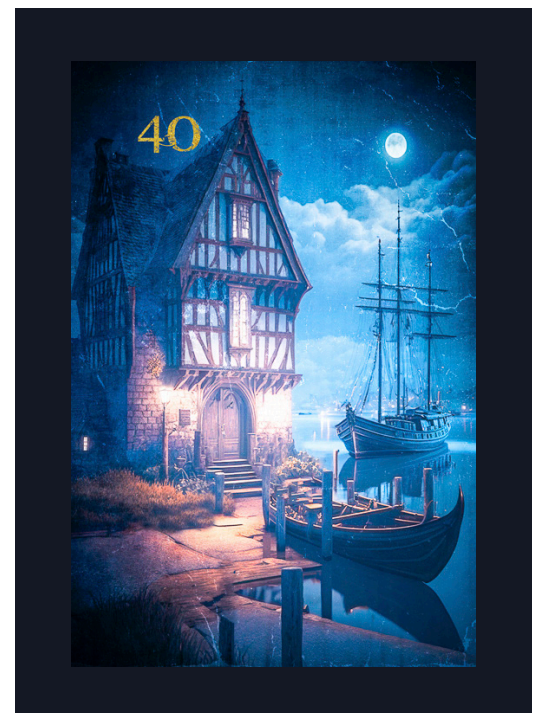


39

PORT / HARBOR

Arrival or departure (physical & methaphorical way): watch out for movement cards like the *ship*, moving away from the port or moving towards the port!

- Homecoming, »safe harbor«, shelter
- Exchange, trade, commerce
- Being ready for the next step or level
- Wanderlust
- Looking for new opportunities



- Central meaning of the hourglass as well as the clock is the time. In combination with other cards, either time information or time qualities are given, see time combinations below.



Extension – all combination with the main cards:

- **The Rider:** Something is urgent, is already happening or will happen within a week or a month
- **The Clover:** Very short time period, shortterm, very soon (two hours to two weeks)
- **The Ship:** Medium-term, several months (within three weeks to three months, sometimes also nine months); a period of transition; changes possible
- **The House:** In the morning; according to plan; making plans is possible
- **The Tree:** Long-term, very long time; as it has been something ran out
- **The Clouds:** Unfavourable or uncertain timing, bad for planning
- **The Snake:** Complicated timing
- **The Coffin:** Missed or past point in time; the time of something ran out
- **The Bouquet:** In spring or take/make enough time

- **The Scythe** (Pointing towards the Clock): Suddenly, unexpected, unpredictable, sooner than anticipated
- **The Scythe** (Clock is on the side of the Handle): In fall or later than anticipated
- **The Whip**: Choose moment wisely, time conflict; two possible points in time
- **The Birds/Owl**: Turning point, new time; sporadically; unpunctually; making plans is impossible
- **The Child**: Pay attention to when it feels good, spontaneously; do not mind the time
- **The Fox** (looking inwards): Wrong moment, bad timing
- **The Fox** (looking outwards): Right moment, good timing
- **The Bear**: Time-independent or make time
- **The Stars**: In the evening or at night; winter; take/make a lot of time
- **The Stork**: Time is subject to changes, postponing; something happens within three to nine months; flexible timing
- **The Dog**: Regularly; according to plan, reliable timing
- **The Tower**: No time, no right moment, never; comes with a deadline
- **The Park**: Point in time determined from the outside, time-bound
- **The Mountain**: Delayed or inhibited; procrastinate
- **The Crossroad**: There are alternative times or it is a long-term endeavour; much later
- **The Mice** (increasing side/side the Mice face away from): There is more time; more time than necessary
- **The Mice** (decreasing side/side where the Mice are eating): There is less time, or times absent
- **The Heart**: Self-determined moment or time frame, your desired moment is available; perfect timing
- **The Ring**: Over and over again, repeating; always; make an appointment
- **The Book**: Unknown time, making plans not possible, let things happen; it is not time yet; later
- **The Letter**: Time and planning still depend on other factors; get information on times or deadlines

- **The Man/Woman:** Proxy for yourself – in your own time, set the time yourself; Proxy for someone else – in their time, at their pace
- **The Lily:** Right moment or coordinate times
- **The Sun:** During the day or in the summer; ideal time; seize the moment
- **The Moon:** Periodical, in certain intervals or listen to your inner timing
- **The Key:** Perfect timing, exactly according to plan, »dead on time«
- **The Fish:** Listen to your inner timing; take things as they come; go with the flow; Time cannot be planned, don't mind the time
- **The Anchor:** Set the fixed time yourself; schedule
- **The Cross:** Fate dictates the timing, no way to influence the time

42 MASK

- Disguise, concealment
- Camouflage, hide-and-seek
- Not wanting to show one's true face, not revealing true identity, not being authentic, more appearance than reality
- Role play, slip into a role
- Carnival, ball, roleplay
- Protective mask
- Anonymity
- Escape from reality and social norms
- If the fox looks into the mask, extreme caution against fraud is advised
- It is not what it looks like



43 MIRROR

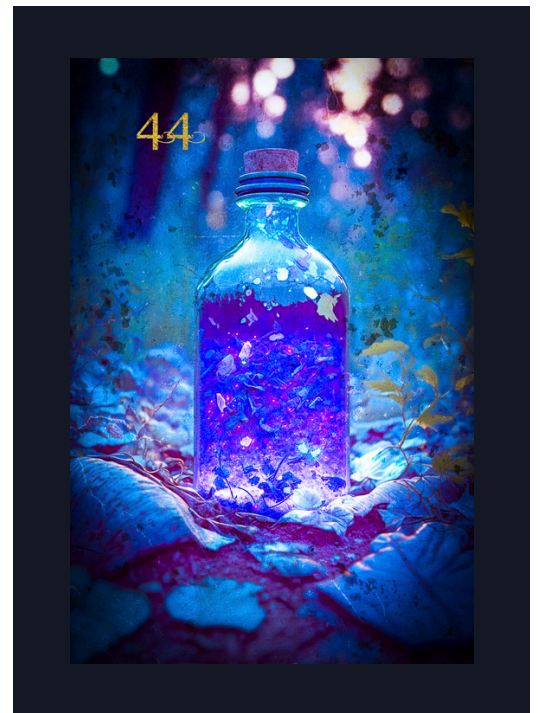
- Self-image
- Vanity
- Worrying about what others think of you
- Self-awareness, self-reflection, discovery of one's identity
- Projection
- Visualize something, get something shown
- Vanity, narcissism
- Reality
- This card can often be translated with the word »self«, for example, in connection with the castle: »self-protection«. Or »self-love« with the *heart*.



44 POISON WARNING CARD

- Feelings of guilt, guilty conscience
- Harmful, pathogenic, toxic, e. g. with the ring a toxic relationship
- Medicine
- Poison in an actual sense as well as figuratively
- Corruption
- Treachery
- Illness, ailments
- Medicine
- Warning of harm or disadvantage

The poison is always a *warning card*! The danger is heightened by the *scythe* pointing at the poison, the *fox* looking into the poison or the *clouds* that border it. In addition, the *cross* can increase the »effect« of the poison.



45 QUILL

- An important note, text or document
- Communication card = connect, speak, exchange, communicate with each other (using any kind of channel!)
- Writing, author, literature
- Thoughts
- Have a connection to each other, have something to say to each other
- Express yourself



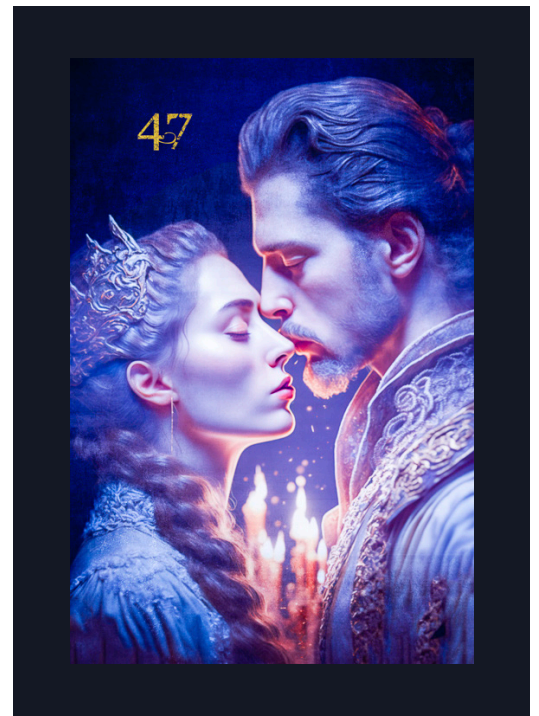
46 SWORD

- Fight, dispute
- Aggression, attack, violence
- Defense, resist, push back against sth.
- Bitterness, vehemence, causticity
- Bravery, courage
- War, fight
- Double-edged: Something can be of advantage and disadvantage → Finding a balance between good and bad! Weighing



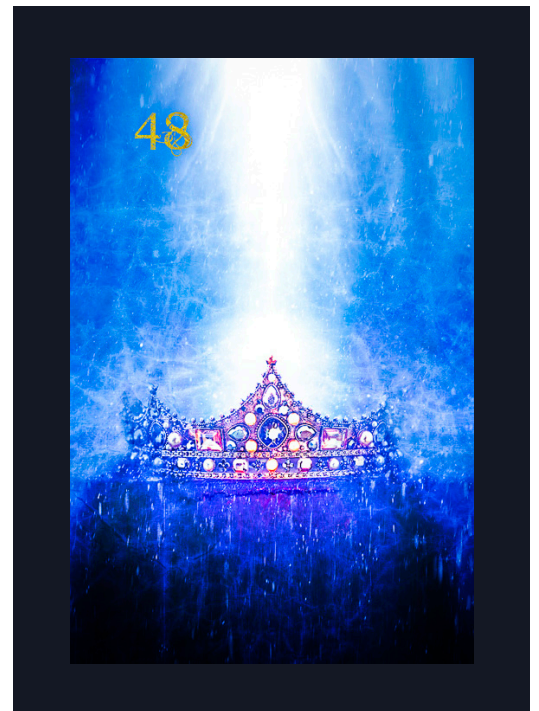
47 KISS

- Union, coalescence, cooperation
- Intimacy, affection
- Expression of affections and feelings
- Kiss, to kiss, touch
- Intimacy
- Being chosen
- Agreement, seal, get-together



48 CROWN

- Be on top, be No. 1, market leader, top performance
- Highest quality, high end
- Easily translatable with »the best«
- Priority, importance
- Striving for power, leadership
- High demands
- High society (with *park*)
- Boss, CEO
- Dignity, pride
- Authority
- Inheritance, succession
- Overconfidence, arrogance



49

STAIRCASE FUNCTION CARD

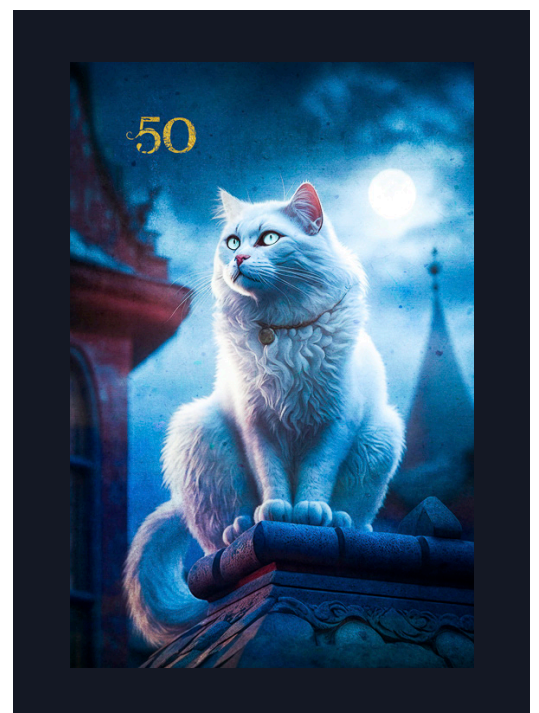
- Level, hierarchy, steps
- Connection between two levels, context, bridging
- Development, learning process
- Ascent → cards above the stairs (in the *Grand Tableau* in the vertical row above the card of the stairs) or in all other spreads in a combination **with the stairs on the right** mean: success, growth, improvement of the situation; slowly progress step-by-step; new task, new lesson
- Descent → cards below the staircase (in the *Grand Tableau* in the vertical row below the card of the stairs) or in all other spreads in a combination **with the stairs on the left**, mean: worsening of the situation, something is going downhill, regressive; a development makes a step backwards; having to start again at a point where you have already been; reset to default



50

CAT

- Independence, sovereignty
- Self-reliance
- Individualist, loner
- Approaching something unnoticed
- Navigate behind the scenes
- Tenderness, cuddling not kissing! → This is »reserved« for the *kiss*
- Witchcraft and supernatural
- Contradictory behavior
- Curiosity
- Difficult to assess



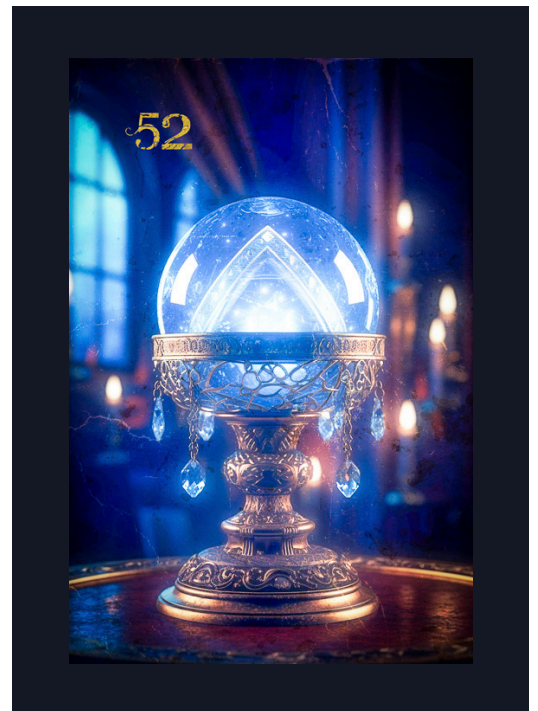
51 SALON

- Room, space, interiors
- Social networking
- Influencing
- Encounter, meeting
- Appointment, date
- Furniture, equipment
- Platform
- Hotel, accommodation
- Living room, lounge, meeting room, café, pub, restaurant, bar



52 FORTUNE TELLING BALL

- Esotericism, spirituality
- Prophecy, vision, divination
- Visionary talent, fortune-telling
- Future
- Spiritual connection
- Destiny, fate
- This card often reflects the unpredictable nature of life! So if this symbols appears, the time is not ripe, to find something out. The cards do not want to reveal the fate at this point. Therefore, don't challenge it too much, but trust that the cards will answer you at the right time.



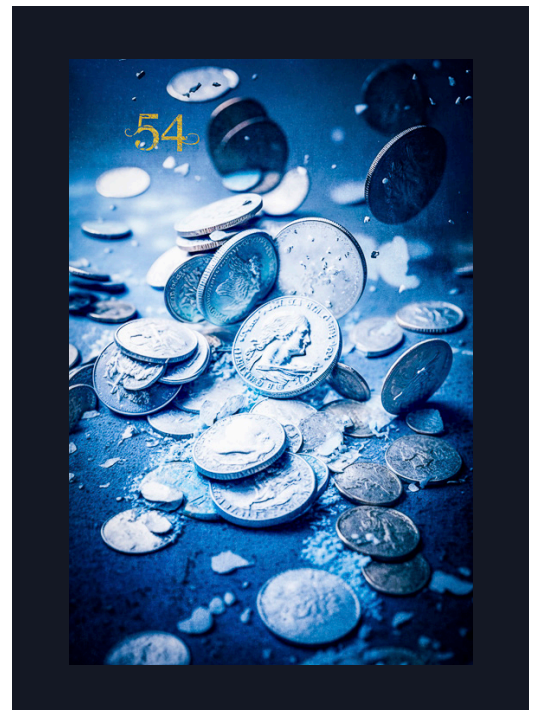
53 CANDLE

- Light in any form
- Bring light into the dark, illuminate something, see, perceive
- Perception, understanding
- Bright energies full of light
- Confidence, hope



54 COINS

- Money, means of payment
- Payment transactions
- Trade
- Savings, investment
- Value, also in a figurative sense
- Quantity: much, a lot of
- Caution: this card does not mean that you get a lot of money!



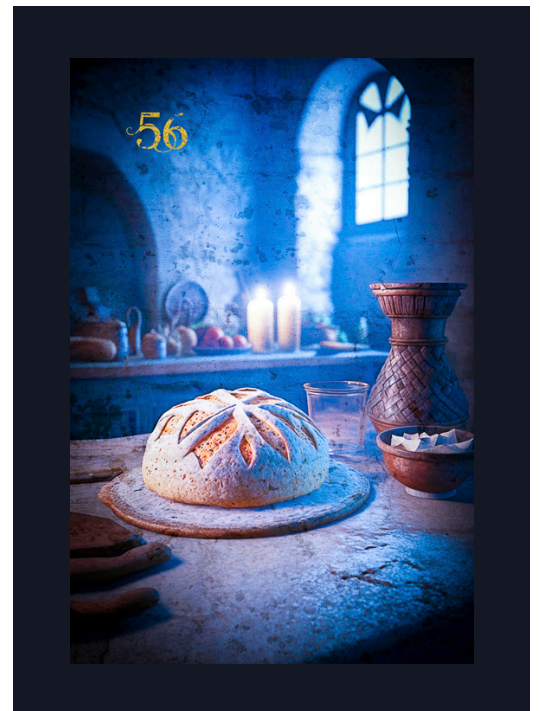
55 DEER

- Strong, authoritarian figure, leader, top dog (especially with *crown* or *rider*)
- Attempt to impress, »bigwig«, dominance, strong appearance
- »Rutting season«, hormonal drive, sexual desire & passion, sow one's wild oats
- Greed, desire, insatiability
- Power struggle, competition, measuring with competitors
- Check where you got too rigid/stuck
- Stand one's ground, make one's way, »thump the table«
- Father conflict (especially with the *bear*)



56 BREAD

- Nutrition, food, cooking and baking, kitchen
- Bread and butter, alimony, salary, primary care
- Necessities, »the nitty-gritty« (alpha and omega); substance, basis, existence, care, basic need, care for others; food in a metaphorical sense
- Sharing in every sense of the word, e.g. foodsharing, car Sharing, sharing of experiences etc.
- Prerequisite, condition: something has to be done or created first



57 BRIDGE

- Transition from one condition to another, overcoming obstacles
- Establishing a connection between two topics, connection → particularly applies when the bridge lies between two cards. It links them with each other!
- Solution; overcoming: Help to achieve a goal
- Acceleration
- Agreement, meeting



58 TREASURE CHEST LUCKY CARD

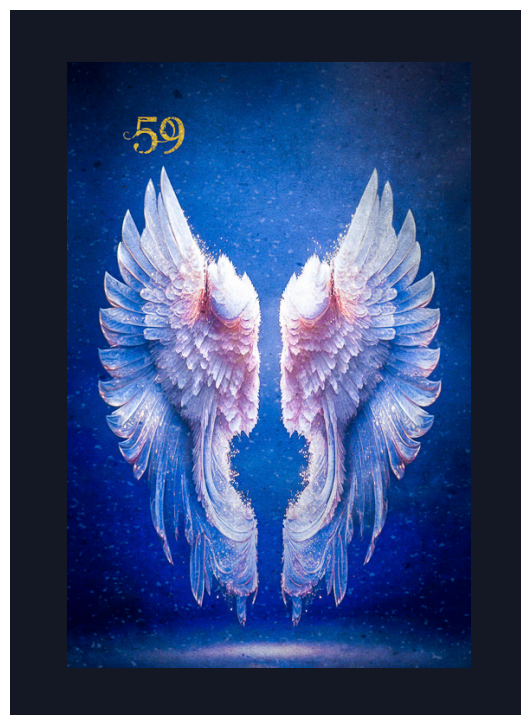
- Abundance, fulfilment; happiness, Indulgence, you can draw from unlimited resources, there is enough of something
- Reward, appreciation, approval
- gain, enrichment, riches (ideational as well as material); valuables, a treasure
- Waste, decadence; vanity, luxury; entitlement
- Don't forget; leave an impression; conserve, save
- Box, strongbox, bag, drawer; media storage



59

ANGEL'S WING WONDER CARD

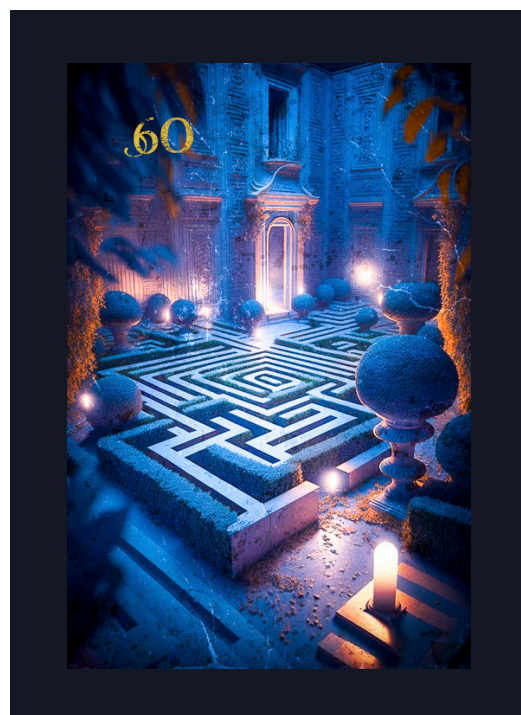
- Protection and guidance through the spiritual world; Trust the conductor of souls/guardian angel, heavenly assistance
- Spirit world, angels, spirit guides
- Faith, request, ritual, prayer, signs and messages from »above«
- Everything is fine as it is; trust that everything that happens is good
- Divine love and energy; confidence
- Fate, destiny, vocation
- Compassion, forgiveness, charity, being there for others, protecting, guarding, helping



60

LABYRINTH

- Confusion and aberration
- No direct route possible
- Rational thinking and acting required
- Branches, curves, detours
- Errors, failed attempts



61 MILL

- Troubles of life, pains, strain, burden
- Hard work
- Working conditions
- Discipline, perseverance
- Much effort required
- Manufacturing, processing and production
- Repetition, something keeps recurring



62 ABYSS

- Depth
- Void
- Inner abyss
- Descent
- »Deadlock«
- Shamle, dissolution of structures
- Fear
- Unknown, most hidden things (also within ourselves)
- Darkness
- Literally spoken: »That will get you nowhere«



63

BUTTERFLY

- Inner Change or transformation → The symbol of the butterfly mainly refers to the inner processes. *Stork*, *owls* and *portal* can refer to changes coming from outside.
- Growth
- Rebirth, renewal
- Resilience
- Beauty
- Fragility
- Freedom
- Ephemerality, fleetingness
- Gender transition



64

CASTLE

- Protection
- Control
- Center, centerpiece
- Defense mechanism
- Fortitude
- Inner or outer strength
- Boundary, barrier
- Property, ownership
- Real estate
- Business enterprise
- Management
- Famous place



65 BLACK FEATHER WARNING CARD

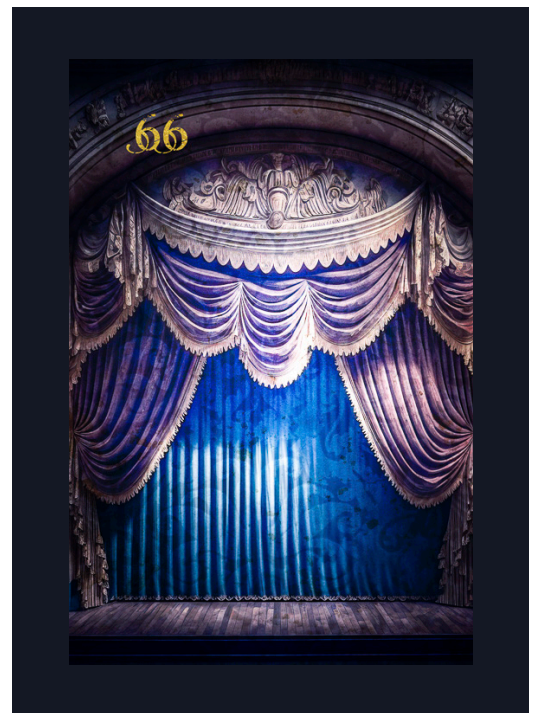
This card can hint at something changing from good to bad. It can also show that a negative development can still be stopped.

- Disappointment, loss of the will and power to live, sorrow
- Feeling of guilt, guilty conscience
- Fear of the future, mistrust
- Prohibition, Doom
- With negative cards → Harbinger/sign of unfavourable developments, change for the worse; can still be prevented!
- With positive cards → A warning that the positive can change to something negative, negative influence or consequences
- Talisman, charm, magical abilities



66 THEATRE

- Art, creativity
- Performance
- Imagination, show, »make believe«
- Appearance and attitude of a person
- Audience
- Feedback
- Experiment
- Storytelling



- Child → This card can be used instead of the standard child card. Like the other person cards these two figures also have non-personal meanings. These cards can be used instead of the standard card child, which depicts a boy. For example, if you want to use a proxy card for a girl. Likewise, it is possible to use both cards together, one as a proxy for a boy, the other for a girl. Here are several possible applications, which you can vary for yourself according to your needs.
- For non-personal meanings: If you use only one of the child cards the non-personal meanings like »beginning« remains the same and can be referred from the main child card to the additional card.
- If you use both cards in one season, their non-personal meanings have to be distinguished. I would recommend the following splitting.

Boy child: New beginning, desire to explore and experience new things, action-oriented tendencies, confidence, willingness to take initiative, courage. Proactive nature.

Girl child: Innocence, recklessness, naivety, lightness, nurturing, supportive and caring nature, playfulness, creativity, emotionality, sensitivity



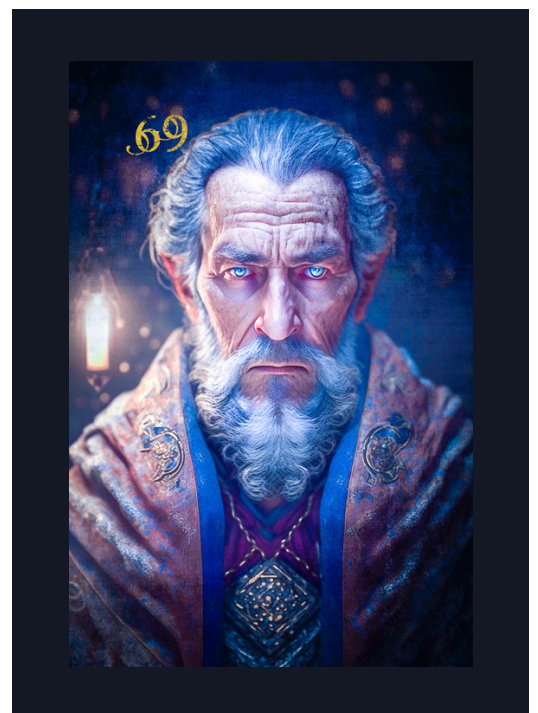
68 KING & QUEEN

- Couple → regarded as neutral both externally and internally, appearance and character are defined more closely only through other cards! Like the other person cards these two figures also have non-personal meanings.
- Couple, no matter what kind of. For example lovers, parents, grandparents, siblings, friends. I would recommend considering these two persons as a unit, but not in terms of gender. it does not necessarily have to be a man and a woman.
- Pair, two of sth.
- Likewise, this card can stand for a larger community of people, regardless of the number of people. it is just a matter of other people or groups playing a role in the issue being questioned. Whether these people are all known or familiar doesn't matter. It's all about the collective, e.g. work colleagues, fellows or extended family



69 EREMITH

- Male person → regarded as neutral both externally and internally, appearance and character are defined more closely only through other cards! Like the bear, this figure also has non-personal meanings.
- Faith, religion
- Convictions, ideology
- Hermit, withdrawal from the outside world
- Maturity
- Renunciation, humility, castigating oneself
- Search for meaning, wisdom, find answers



70

HEALER

- Female person → regarded as neutral both externally and internally, appearance and character are defined more closely only through other cards! Like the *snake*, this character also has non-personal meanings.
- Art of healing, healing methods, alternative medicine, therapy
- Healing
- Humanitarian, social attitude, philanthropy, service to humanity
- A situation or matter needs to be healed, needs to be cleared up, to look closely at something, heal open wounds
- Advice, advisor, mediator, coach



EXAMPLES FOR COMBINATIONS WITH THE KINGDOM'S NIGHT ADD-ONS

Lenormand is known to be read as combinations of symbols. The following examples are intended to give an insight into how the new additional cards interact with the other Lenormand cards. The interpretations are based on my knowledge and experience as a Lenormand expert. Nevertheless, the interpretation examples should only serve as a suggestion. Feel inspired to find your own interpretations and thus delve deeper and deeper into the kingdom of Lenormand.

- **Abyss & Anchor:** »Lifebelt«, being saved from an abyss
- **Abyss & Letter:** A message pulls you down or a conversation draws a deep trench
- **Abyss & Owls:** Sink into chaos
- **Abyss & Sun:** Getting out of the slump again
- **Black Feather & Mice:** Threat of loss or theft
- **Black Feather & Sword:** Warning of a confrontation or provocation – risk of escalation
- **Bread & Mill:** Working hard for your money
- **Bread & Scythe:** Cut back on living expenses
- **Bridge & Abyss or Tower:** »Burn one's bridges«
- **Bridge & Crown:** The best solution or get to the top quickly
- **Bridge & Mountain:** Master a problem
- **Candle & Eremit:** »Eye-opener«, seeking for the truth
- **Candle & Salon:** Romantic atmosphere or romantic date
- **Cat & Anchor:** Become self-employed
- **Cat & Fox or Mask:** Scamming
- **Cat & Sword:** »Claws out«
- **Coins & Clock:** Plenty of time

- **Coins & Deer:** Greed for profit
- **Coins & Flowers:** Spending money on luxury or generosity
- **Compass & Deer:** To be guided and influenced by someone
- **Compass & Labyrinth:** Get off the track, loose orientation
- **Compass & Port or Crossroads:** Being aware what's the right way, choice or goal
- **Eremith & Cross:** Powerful learning process
- **Eremith & Mountain:** Being caught in one's convictions, being incorrigible, fanatical, unshakable belief
- **Fortune-telling ball & Coffin:** Contact with the other world
- **Fortune-telling ball & Stars:** Clairvoyance
- **Healer & Coins:** Donation
- **Healer & Fish:** Psychotherapy
- **Healer & Key or Treasure Chest:** Chance of recovery
- **Healer & Mirror:** Self-healing
- **Healer & Rods:** Resolve a conflict or seek advice from a healthcare professional
- **Kiss & Cat:** A lot of intimacy, getting very close with each other
- **Kiss & Fox :** »Judas kiss« - betrayal
- **Labyrinth & Bridge:** »Tug-of-war«, each side tries to be stronger and better, competitive behavior
- **Labyrinth & Cross or Mountain:** Insolubility of a problem
- **Labyrinth & Key:** Solving an utterly hopeless problem
- **Labyrinth & Ring:** Repeating pattern of a dilemma or relationship got stuck
- **Labyrinth & Rods:** Get caught in one's own contradictions
- **Mask & Theater:** Nothing is real and reliable, all just a show
- **Mill & Coffin:** Something is not worth the hassle
- **Mill & House:** House building, construction site, the daily »grind«, exhausting daily life
- **Mill & Poison:** Being robbed of the wage of one's work o. poor working conditions, complaints from hard work

- **Mill & Stairs:** Working for something step by step, achieve something step by step
- **Mirror & Fox:** Wrong self-image, distorted self-perception
- **Mirror & Lantern:** Finding out what you want, getting to know yourself better
- **Poison & Park:** Toxic environment
- **Poison & Port:** Wrong place or wrong destination
- **Port & Bridge:** Reach your goal faster than expected
- **Port & Stars:** Great deal
- **Portal & Nest:** Be ready to start a family
- **Portal & Ring:** Commit to a relationship, be open to a relationship or find a new level of relationship
- **Portal & Tree:** Start a new life chapter
- **Quill & Hourglass:** It's time to send a message or write down your thoughts
- **Quill & Theatre:** »Thought-provoking cinema« or a film or film production
- **Salon & Anchor:** Home office, mutual visits
- **Salon & Book:** Secret meetings
- **Salon & Bread:** Kitchen
- **Salon & Lilies:** Bedroom, intimate meeting
- **Seal & Black Feather:** A signature or signing can cause damage and trouble
- **Seal & Letter:** Signed contract
- **Sword & Mill:** Demand everything from yourself or others, give everything, high commitment
- **Sword & Rods:** Humiliation, violation
- **Sword & Scythe:** Unscrupulousness, regardless of the consequences, »sell one's own grandmother«
- **Treasure Chest & Butterfly:** Tremendous growth or outgrowing yourself
- **Treasure Chest & Flower:** Highest recognition

EXCHANGE CARDS FOR MAN AND WOMAN

The *exchange cards* can always be used when it comes to same-sex relationships or a connection between woman and woman or man-to-man, e. g. good friends, boss-employee, teacher-student or brothers.

Either the classic man or the classic woman is replaced by the new person card, so that only two women or two men are used. The *exchange cards* for *men* and *women*, 28 and 29, have the digits reversed so that the consecutive numbering of the symbols is not interrupted. The characteristics of the two exchange cards are identical to the original ones. The directions of sights were also retained. Thus, both same-sex individuals look at each other on the cards.

If you do small spreads with the extended edition, you can either leave the two exchange cards out or bring them into play as additional actors. The exchange cards are used as a substitute for all types of individuals who have to deal with the questioned situation.

USE OF THE ADDITIONAL CARDS

You can use the additional cards in a variety of ways. Expressed in a simplified way: there are no limits with Lenormand when it comes to the use of the *additional cards*. However, I would like to give you a few recommendations on how to include the *Kingdom's Night additional cards* in your card spreads and interpretation.

To get the most out of the *additional cards*, I recommend mixing them with the classic Lenormand deck. This gives you a considerable stack of 72 cards (not including the exchange cards).

Now you can carry out your spreads as usual. The large compilation is particularly recommended for *minispreads*. By this I especially mean spreads that consist of a combination of three cards. I frequently use this kind of combination on my YouTube channel and my blog. The interpretation of these combinations is as usual. In addition, I provide a lot of explanations and tips on my channels. In my textbooks, you will find complete instructions on how to interpret Lenormand cards.

The extended spectrum of symbols offers the advantage of gaining even more flexibility and, at the same time, accuracy in interpretation. At the beginning it may take some time getting used to work with twice the number of Lenormand symbols but they will crystalize as a valuable and indispensable part of your card spreads by and by.

The *additional cards* are also ideal for larger types of laying out such as the *Celtic Cross*, the *Nine-Cards-Spread* or the *Love Spread* and the *Karma Spread* (detailed instructions to this on my blog). It is also possible to only use the *additional cards* as a supplement in all these spreads. First, you work out your spread with the 36 classic *Lenormand cards*. Now you could either add an *additional card* for each individual position or just place an *additional card* onto the positions as a quintessence, where another hint seems to be useful to you.

Always remember that you can design the integration of the *additional cards* as you wish and that you determine the scope or level of difficulty yourself.

There are different approaches for integrating the *additional cards* into the *Grand Tableau*. I would like to recommend the following procedure to you. Use all 72 cards to shuffle. So far it has always been the case that all cards were represented in the spread. The highlight of the new way of laying out is that only those cards come into play »by chance« that actually play a role for the question you asked. All others have no meaning for this explanation and thus for the answer and are left out. Now lay out your tableau with 36 cards as usual. The interpretation takes place as usual. I explain the interpretation techniques in detail on my channels and in my books.

If you do not want to dispense with certain main characters or certain theme cards such as the *ring* or the *anchor*, there is an alternative. First, you should discard these particular cards before shuffling. Then shuffle the entire deck and draw all the cards for your *Grand Tableau*. But only so many cards that they add up to 36 together with the theme cards put aside! Do not lay out the cards yet. Because now all 36 cards are shuffled together again. Now lay out the cards according to your scheme and interpret as usual.

If you have enough space and like to experiment, you can lay out a *Grand Tableau* with all 72 cards. In order to do this, make 8 rows of 9 cards each, if you usually work with the 9x4 spread. If you follow the 8x4 method, make 9 rows of 8 cards. I strongly recommend taking notes on this because you can quickly lose sight of your interpretation with such a large tableau. Since a spread of this extent cannot be done in a hurry, you should take enough time and be patient.

As with the small spreads, you can only use the *Kingdom's Night additional cards* as a supplement to the large table. To do this, lay out your tableau conventionally with the 36 classic symbols. You can use an additional card at all points where you need additional information. It gives you further impulses and answers. Thus, the additional cards complete the overall picture and the overall message.

MAY THE WISDOM OF THE
LENORMAND GUIDE YOU ON
YOUR JOURNEY.

*I wish you the best
Kathleen*

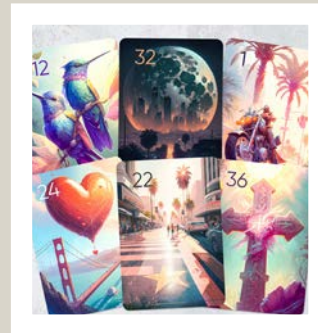
My card decks

ZENSEIKI LENORMAND



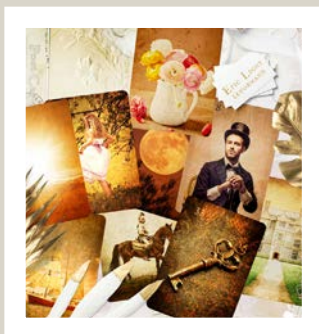
With the beautiful Zenseiki Lenormand you dive deep into the ancient soul of Japan. Its sacred places, mysterious myths and multifaceted traditions are reflected in the illustrations. A world of grace and mindfulness! Feel invited to feel ZEN at heart.

COSMIC CALIFORNIA LENORMAND



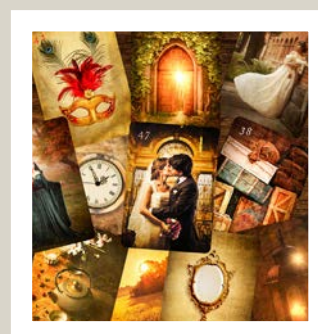
These cards are not just a tool for divination, but a bridge between you and the unique energy of California. Let the Cosmic California Lenormand cards guide you on your journey and provide clarity, inspiration, and insight.

EPIC LIGHT LENORMAND



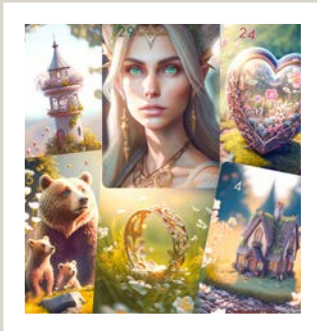
The Epic Light Lenormand catches the warm light of innumerable candelabras and chandeliers in the manors' ballrooms and allows you to experience the atmosphere they create with all your senses.

EPIC LIGHT LENORMAND ADD-ONS



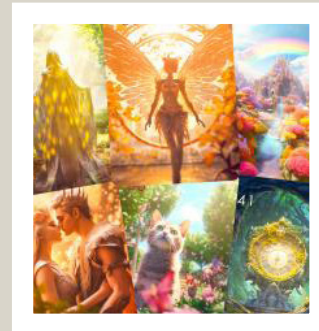
The classic Epic Light Lenormand deck of cards is expanded with this unique collection. It contains 36 new symbols which meaningfully continue and enrich the traditional symbols.

FAIRYLANDIA LENORMAND



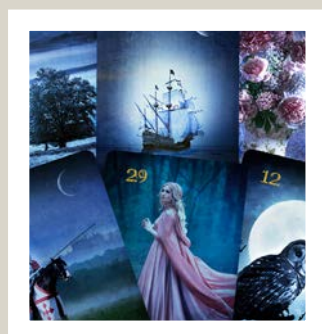
The Fairylandia Lenormand transports you to a photorealistic miniature fairy world filled with magical wonder and enchantment. It captures the essence of a mystical world and evokes the beauty of a fairy realm.

FAIRYLANDIA LENORMAND ADD-ONS



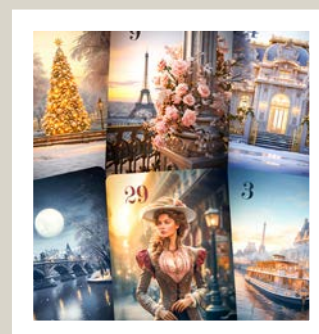
Proceed on your journey through magical Fairylandia with this expansion. The world of fairies and elves takes on a new dimension with the 36 additional cards.

KINGDOM'S NIGHT LENORMAND



Immerse yourself in the nocturnal atmosphere of a medieval kingdom with this exclusive Lenormand deck. The hours between dusk and dawn awaken mysticism and magic, surrounded by the enchanting essence of the night.

WINTER IN PARIS LENORMAND



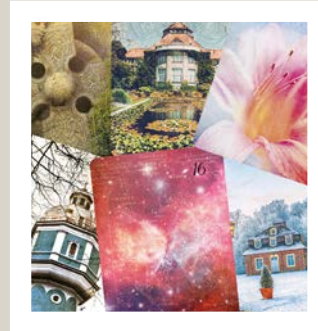
Travel back in time with the extraordinary Winter in Paris Lenormand. Discover the beauty and romance of old Paris, wrapped in a magical winter atmosphere. This deck of cards will enchant you.

FLORANEUM LENORMAND



These hand drawn illustrations immerse you in a peace-loving realm of mediaval mystique. Embellished with flowery decor and clear focus on the symbol these cards convey a feeling of tranquility.

LICHTBLICK LENORMAND



The Lichtblick Lenormand is a shining deck with a very clear and easy to read message. It combines vintage elements with fresh, modern style and at the same time sends out light and cheerfulness.

FREEDOM LENORMAND



In Freedom Lenormand, each card is a piece of art in itself. This fancy deck combines effective art styles and stands out with its striking colors. Even with all the creativity, the symbols are easily recognizable.

Watch out on
www.etsy.com/shop/lenormandlove
for upcoming
decks!

The information in this guidebook is for entertainment purposes only and is not a substitute for medical, legal or other professional advice. Any liability of the author or the publisher is excluded.

Kingdom's Night Lenormand Additional Cards

Copyright © 2024 Kathleen Bergmann

All rights reserved. Reproduction, in whole or in part, only with the written permission of the author.

Concept & text: Kathleen Bergmann

Design of the guidebook: Eileen Kummer

Design of the cards: Kathleen Bergmann

Printed in Germany

My website:

www.kathleen-bergmann.de

hello@reichdersterne.de

Follow me on Instagram:

[weltdeslenormand](https://www.instagram.com/weltdeslenormand)