

EPIC LIGHT
LENORMAND



A CARD DECK BY
KATHLEEN BERGMANN



GUIDEBOOK FOR YOUR EPIC LIGHT LENORMAND

EPIC LIGHT LENORMAND

England, 1910.

It is the dawn of a new century. A century that marks the beginning of the Belle Époque – an era when people lived like royals. Aristocrats hosted balls and soirées for members of the high society in their manors and nothing could disrupt the exclusive atmosphere of those times. Even the change looming over Europe could not take hold among the dances and celebrations.

The *Epic Light Lenormand* catches the warm light of innumerable candelabras and chandeliers in the manors' ballrooms and allows you to experience the atmosphere they create with all your senses. Their light represents the boisterous air of these opulent ceremonies that both hosts and guests must have wanted to last forever.

This deck evokes the epic light of those times since each card colorfully represents an aspect that is characteristic for the era. The deck's symbols have been inspired by the popular historical period drama »Downtown Abbey«, which follows the turbulent lives of a family of British aristocrats at the beginning of the 20th century.

The images of the cards are as elegant as the Belle Époque itself, bringing it back to life.

I hope that you will be able to immerse yourself in the glamorous atmosphere of the early 20th century with this Lenormand deck – and perhaps a candle can help illuminate the hidden messages of the cards.

Yours, Kathleen Bergmann

THE MOST IMPORTANT CHARACTERISTICS AND ADVENTURES OF THE EPIC LIGHT LENORMAND

EMOTIONAL AND POSITIVE EXPRESSIONS

While creating the cards, I poured a lot of heart into the project and paid great attention to detail. Every motive conveys an emotional, hopeful atmosphere. Even cards like the *Coffin*, the *Scythe* or the *Tower* sport friendly colours and a spirited aura. Positive cards like the *Clover*, the *Stars*, the *Lily* and the *Sun* use intensive colours to convey their powerfully positive message at first sight. This way you can intuitively connect with the magic of the symbols. The *Epic Light Lenormand* consists of cards that you can feel. They speak to you from within.

CLEAR FOCUS

While the images on the cards are decorative and diverse, they do not distract from the symbol itself. They always keep the focus and prevent getting lost in distracting or unnecessary details – especially when interpreting the cards. The images fill the entire card, allowing for a free reading of combinations with other cards – without borders to limit the mind. In addition to the clear imagery, the direction of the symbols is unmistakable to provide clear reference points when interpreting the message. This is particularly important for directional cards such as the *Rider*, the *Ship*, the *Stork*, the *Scythe*, the *Fox* and the *Mice*. That way you can focus on what really matters: The magic and message of each symbol.

HISTORIC GRACE

When creating the cards for the *Epic Light Lenormand*, I first and foremost wanted to be faithful to the tradition of Lenormand. The historic grace of the cards takes you to times past. Mme. Lenormand, the famous grande dame of cartomancy, lived in early 19th century France. Motives such as that of the *Rider*, the *Coffin*, the *Whip*, the *Tower* or the *Park* evoke memories of those times. They allow a glimpse at the knowledge that leads to the fame of the Lenormand cards. The patina of the cards emphasises that style but also keeps the design fresh and modern to make you feel good when using the cards. On the back of the cards is an illustrated sun, the most powerful symbol of grace and lightfulness.

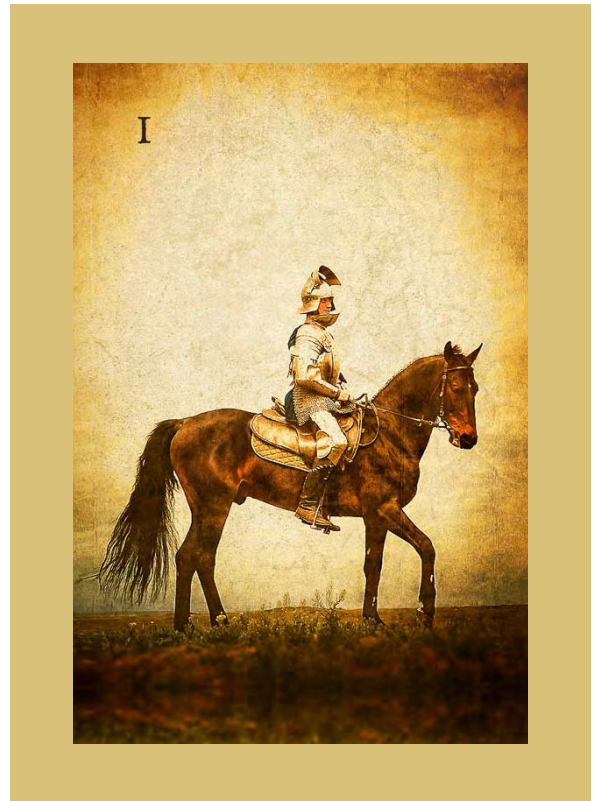
CARD SUMMARY

1 RIDER

beginning, action, activity, behavior, progress, news

The *Rider* symbolises activity and action. He is a messenger showing you what is to come. Pay attention to the direction he is riding in. The following cards will tell you if you will make progress on your way. Negative cards block your way while positive cards indicate a clear path. The cards behind the rider show someone's behavior.

The *Rider* is generally seen as a positive influence in a reading, but its impact may be short-lived, as it represents an initial spark or idea rather than a fully developed situation.



2 CLOVER

short time, short duration, small luck, fun, opportunity, ease

The *Clover* is primarily a timecard. It indicates that something is only a short time away or will not last very long. The *Clover* has the ability to soften the effects of negative cards.

The *Clover* card is typically seen as a positive influence in a reading, but its impact may be limited or fleeting, as it represents small and temporary blessings rather than major, long-lasting ones. Depending on the context of the reading, the *Clover* can also suggest taking risks or seizing the moment, as opportunities may not come around again. Overall, the *Clover* is a card of optimism, hope, and positivity, and can be a welcome sign of good things to come.

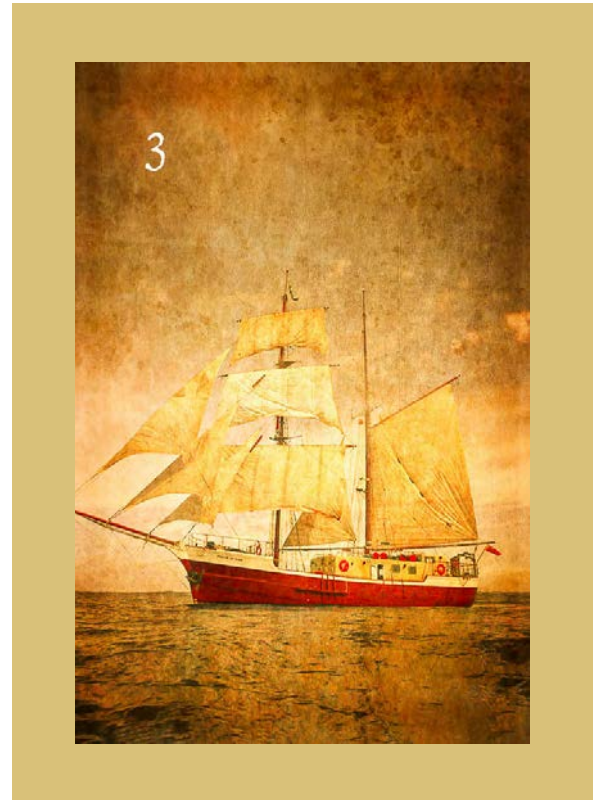


3 SHIP

travel, development, project, exploration, freedom, up & down

The *Ship* is always on its way to the new shores. It symbolises departure, development, exploration and journey. It's looking towards the future. But just as life does not always go smoothly, the *Ship* can encounter uncertain and unreadable waters, hinting at ups and downs and turbulences. Professionally, it can reflect self-employment and new projects.

Depending on the surrounding cards and the context of the reading, the *Ship* can also suggest exploration, adventure, or a desire for freedom and independence.

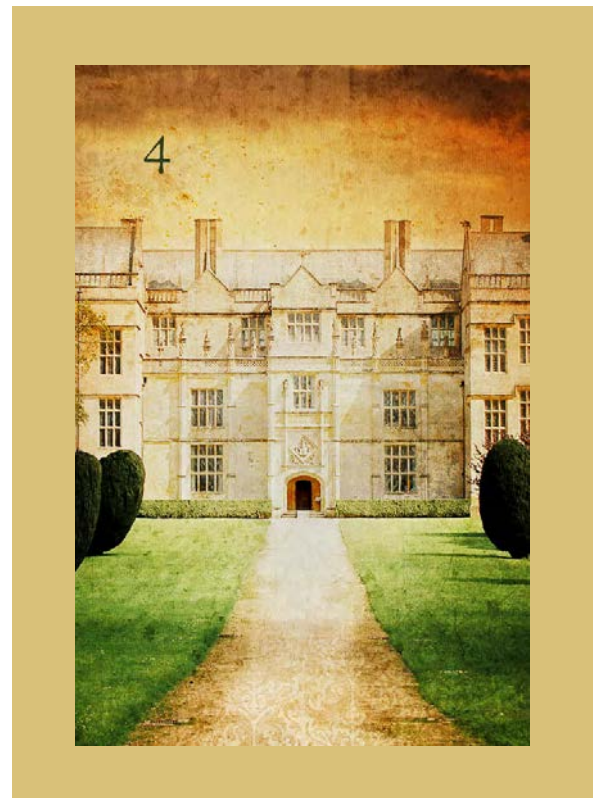


4 HOUSE

family, home, safety, plan, base, origin, structure, residence

The *House* stands for the family, residence and real estate. This card shows our privacy. Like a building it provides a solid base for your plans and goals. When asking for love, it indicates trust, honesty and comfort. Our habits are like a comfort zone that we like to retreat to when everything outside gets too turbulent.

When it comes to a *House*, aspects such as structure and planning should be mentioned. Transferred to life situations, this means that we should work something out thoroughly and set it up stably.

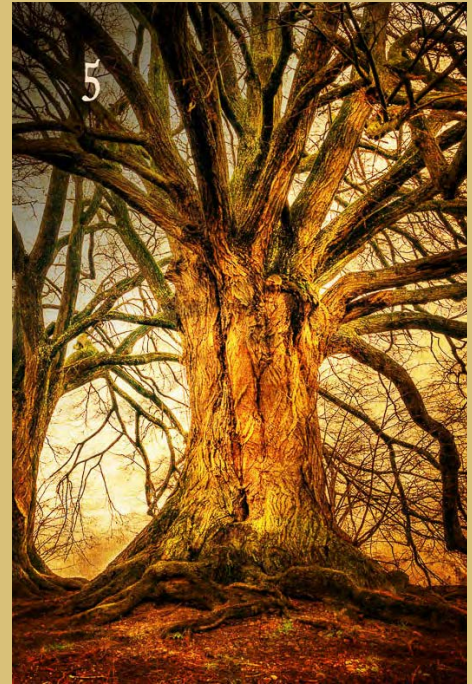


5 TREE

*life, past, health, rest,
values, long term, nature, waiting*

The *Tree* is a card that looks at the past and focuses on traditions and values. It allows us to see where we can root ourselves and where continuous growth is to be expected. It also indicates health issues and often times processes that take a long time to complete. Waiting is a typical characteristic of the *Tree*.

The *Tree* card can also represent tradition, heritage, and ancestry. It can suggest that one is connected to their roots and that they should honor their family and cultural heritage.



6 CLOUDS

*trouble, confusion, anxiety,
uncertainty, non-transparency*

The *Clouds* describe our fears and worries and symbolise everything that is up in the air and uncertain. The *Clouds* are intangible. They tell the reader about and uncertainties. With the *Clouds*, nothing is ever clear, but always opaque and obscure.

The *Clouds* card can also indicate doubt and indecision. It may suggest that the querent is struggling to make a decision or to know what the right course of action is.



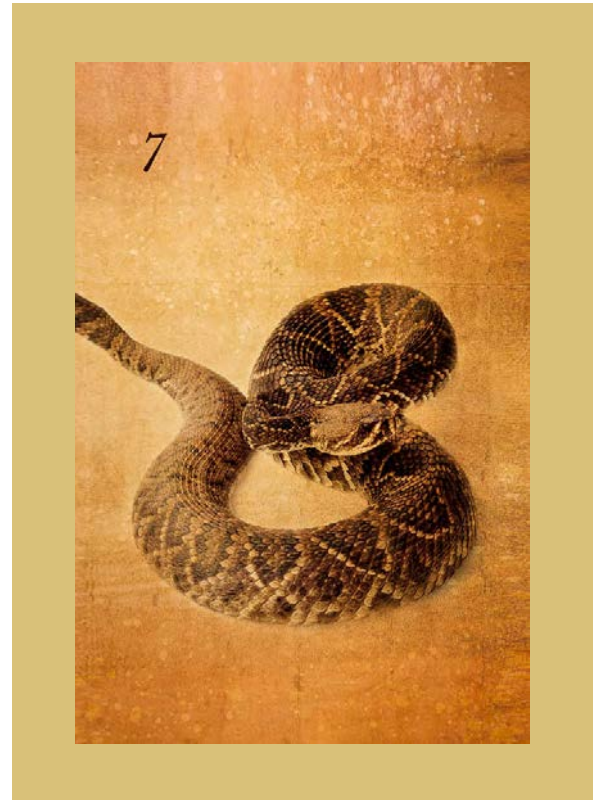
7 SNAKE

*woman, seduction, risk,
rationality, complication, caution*

The *Snake* primarily symbolises women that are concerned by the question. It also advises caution and obstacles or diversions.

Since the *Snake* is a symbol for science, it also symbolises rationality and the mind in this deck.

Seduction and temptation are further archetypes of the serpent. Thus, the *Snake* shows us where we are prone to vices or destructive activities. From this symbol usually comes a warning, so we should be careful in the matter questioned.

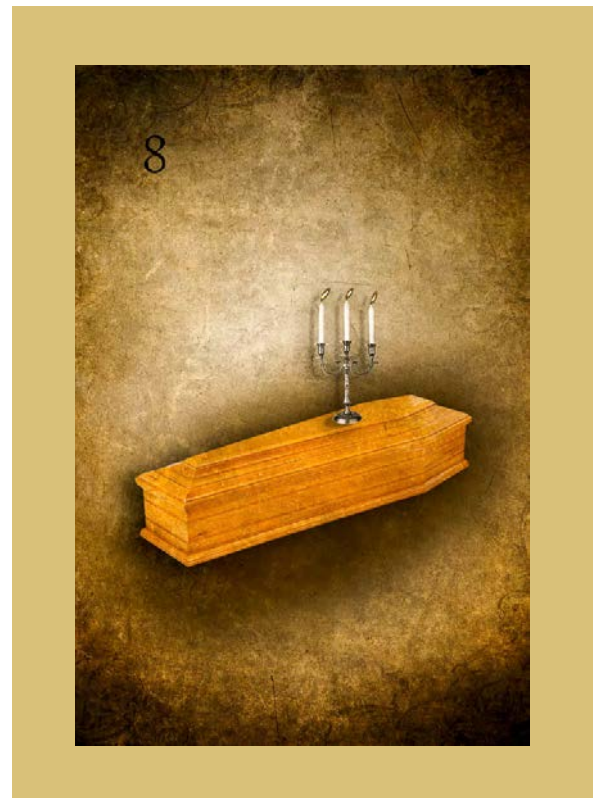


8 COFFIN

*ending, stagnation, profundity,
intensity, separation, loss*

The *Coffin* represents crises and abysses. It shows a path coming to an end and can also suggest the need to release and surrender. It may indicate that the querent needs to let go of control and allow things to unfold naturally, without resistance.

Attention: The *Coffin* does not represent death! This card can often be read as a clear »No«. What this card refers to is illustrated by the cards around it. But there is also the other side of the *Coffin*, which is not only negative and can stand for profundity and intensity.



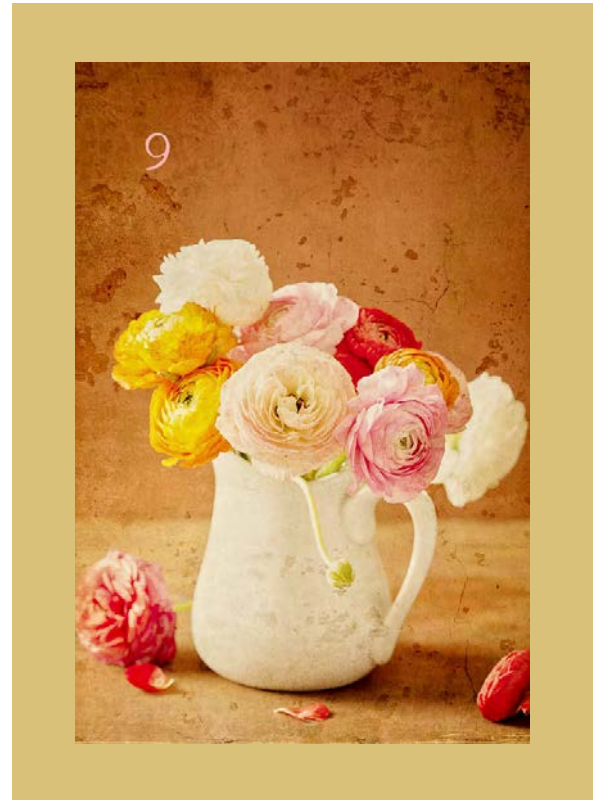
9

BOUQUET

joy, improvement, happiness, growth, pleasure, date

The *Flowers* are a symbol of happiness and luck. They show the potential for expansion and growth and are considered one of the best cards. Things will get better where this card appears except the *Flowers* are made to fade by negative cards. They symbolise confirmation, offers and approval as well as creativity and art. In questions concerning love, they can be used as a dating card.

The *Flowers* card is also associated with physical beauty and attractiveness. It can suggest that the querent is feeling confident and attractive, or that they are attracted to someone else.



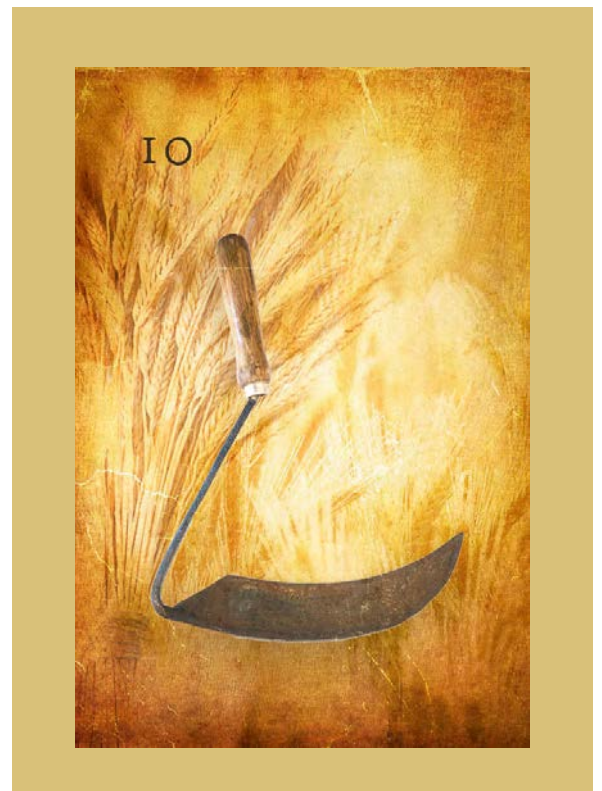
10

SCYTHE

damage, surprise, cut, warning, injury

The *Scythe* literally points towards possible hazards or injuries in a general sense. It can withdraw something or cut something down, but never removes anything completely. It is the »chip in the mug« and shows something getting damages. Nevertheless the *Scythe* is a warning card, especially on the cutting side.

In fact, the *Scythe* card can represent a sudden and unexpected traumatic event, such as an accident or injury. It also represents the aftermath of pain and trauma, such as the *Scars* that are left behind after a physical/psychic injury or emotional trauma.



11 RODS

conflict, negotiation, communication, discord, council

The *Whip/Rod* can be considered as a neutral card that hint at conflict but also indicate talks, council and an exchange of opinions. Thus, I do not see the negative portion predominant with this symbol. Everything revolves around communication.

It is nonetheless a two-sided card that can symbolise tensions. These may end in a dispute or making up your mind.

With this card we should understand that life is not always about perfect harmony, but rather the possibility to improve our communication and to deal with our environment in a more conscious and mindful way.



12 BIRDS

chaos, rebellion, freedom, individuality, upheaval

The *Birds/Owls* are in my opinion Lenormand's way of representing milestones and upheavals. They show every ground-breaking event, change and new beginning that comes with a big turn in your life. Thus, for me, they are clearly different from the *Storks*, which are more responsible for change within a prevailing situation, but do not immediately turn the whole life upside down.

They also hint at »swimming against the tide« and are a sign of rebellion, chaos and non-commitment. Freedom is also in important aspects of the *Birds*.



13 CHILD

new beginning, child, innocence, lightness, recklessness, naivety

The *Child* symbolises a child or teenager, when it is used as a person card. It also indicates a new beginning and rapid growth. It can hint at lightness as well as recklessness. Most of all, this card shows new beginning and new phases. But also a revival of the past is possible.

While the *Child* may suggest a certain sense of recklessness or impulsivity, these are not the primary meanings of the card. Instead, the *Child* encourages you to approach new experiences with an open mind and a willingness to learn, while remaining aware of potential risks or challenges.



14 FOX

lie, deception, scam, cunning, betrayal, hypocrisy, caution

The *Fox* is a »traitor«, hinting at lies and deception. Its formidable instinct allows it to sniff out and expose dishonesty, cunning and misconceptions. As a consequence it can indicate a need to be aware of potential deception or manipulation from others. It encourages you to be discerning in your interactions with others and to avoid being overly trusting. In the direction the *Fox* is running, it indicates that something is wrong or going wrong. This can range from fraud to misbehavior. Always be aware of the *Fox* hunting emotions, words and actions.



15 BEAR

man, influence, power, possession, greatness, dominance

The *Bear* stands for males concerned by the question. It also symbolises power, strength and magnitude. It shows the reader where to be steadfast. It always has the upper hand and represents dominance, authority and possession.

This symbol encourages you to embrace your strength and power, and to use it wisely and responsibly. It also reminds you to be aware of potential threats or challenges, and to take steps to protect yourself and those around you.

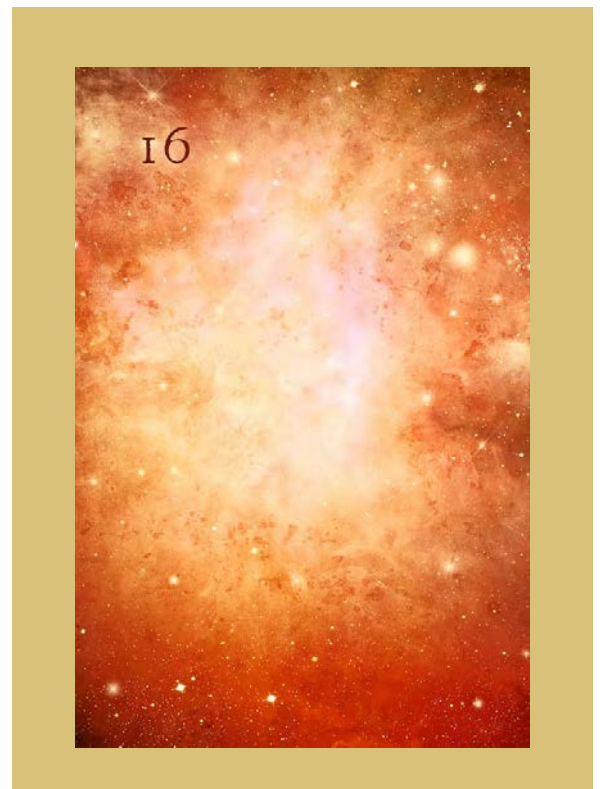


16 STARS

clarity, abundance, vision, spirituality, success, wish

The *Stars* are a metaphor for spirituality. They also present our dreams and wishes. Moreover they give clarity and abundance to the cards around them and originate from the world of fantasy and visions. »Reaching for the stars« means everything is possible. So the celestial bodies symbolise success and potential.

The *Stars* card is associated with a sense of optimism and positivity. It suggests that the querent is able to see the silver lining in any situation. In fact, this card is also about one's visions and dreams.



17 STORK

change, progress, team, adaptation, modification, team

The *Stork* represents change and transformation. Though its effect is not as strong as that of the *Birds (owls)*. The *Stork* changes small things, situations and certain parts of life. Moreover, it represents adaptation, versatility and flexibility. As *Storks* are swarming birds, they stand for groups, neighbourhood and teams.

If the *Stork* card appears in your reading, it may be a sign that you need to go with the flow and be open to new opportunities and experiences, even if they don't fit your original plan or expectations.



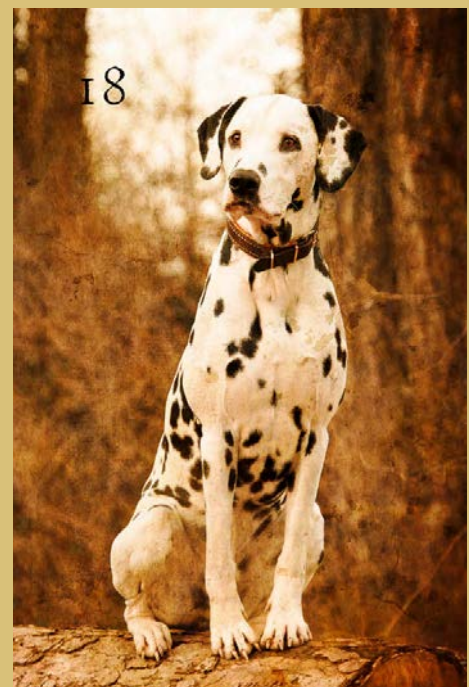
18 DOG

friendship, support, faithfulness, routine, loyalty, honesty

The *Dog* is remarkably faithful. Friendships and social topics are also part of its territory. As a creature of habit, the *Dog* represents regularity and routine. Where the *Rider* and the *Stork* stand for activity, the *Dog's* attributes are passiveness and apathy. This card also reveals what we are attached to or even subordinate to.

The *Dog* encourages you to focus on building strong, trustworthy relationships with others. It also reminds you to be loyal and faithful to those who have been supportive of you.

For partnership issues, this symbol is the indicator of faithfulness.

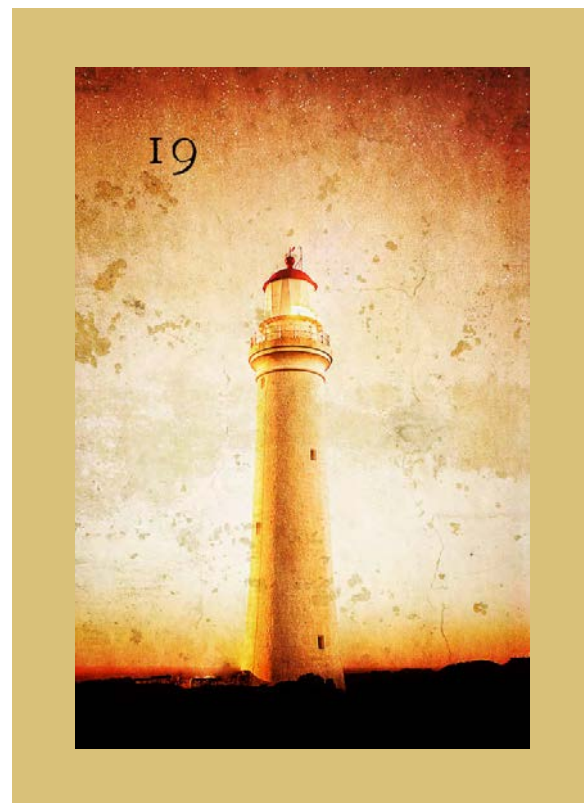


19 TOWER

failure, inability, ruin, boundary, grief, solitude, separation

The *Tower* is the most negative card of the deck. It is considered to be the »destroyer and executor«.

It represents inability, impossibility and demise. Like the *Coffin* it puts an end to something and brings grief and worry. Read positively, it tells us to draw boundaries and retreat. It also represents authorities and institutions. However, in the vast majority of cases, the *Tower* is a negative signal that alerts us to anything that could mean limitation, rejection or failure.

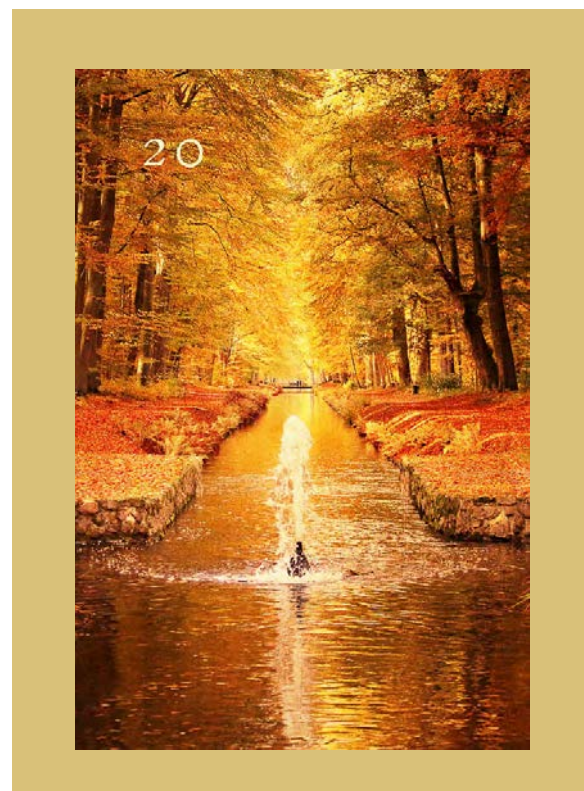


20 PARK

society, leisure, transparency, public, obviousness, media

The *Park* is the gate to the world. It opens both eyes and hearts. Its most important aspect: Carrying something outside or showing something. The public, media and society are the areas it is most concerned with. The *Park* also represents leisure and recreation. It is a place where we would like to be seen. So the *Park* is associated with fame, celebrity and coming-out.

The *Park* represents the exact opposite of the book. It presents things like a shop window for everyone to see, whereas the book holds everything back and only provides exclusive glimpses.

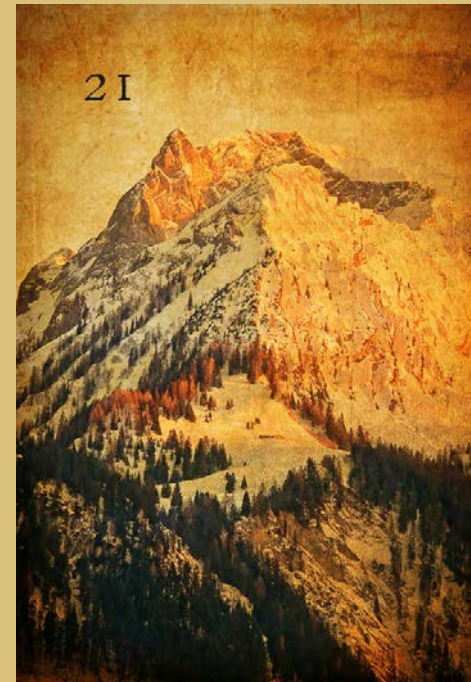


21 MOUNTAIN

obstacle, delay, challenge, hostility, effort, rivalry

The *Mountain* is a card dealing with problems. Expect obstacles and delays. The *Mountain* does not take anything away, but it does provide challenges and asks for great efforts in finishing a task. Unlike the *Tower*, its message is: Nothing is impossible! So things can happen but but you have to work hard and be patient. The *Mountain* card also reveals where to expect hostility and competition.

In a positive context, the *Mountain* represents a sense of determination, resilience, and the ability to overcome difficult obstacles. It can also indicate a need to take a step back and assess the situation before moving forward.

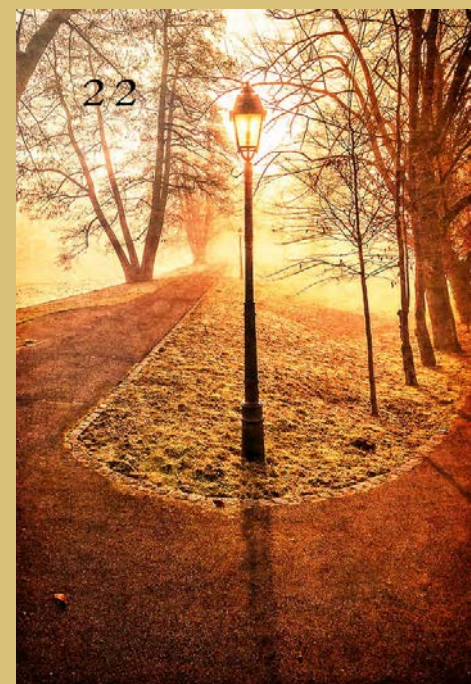


22 CROSSROAD

decision, choice, path, indifference, choice, options, continuity

The *Crossroad* primarily means decisions. The choice, however, is yours. Other cards around the paths allow us to see if the decision needs to be made urgently, if there is still time, if it needs to be reconsidered or if it will become obsolete.

The *Crossroad* itself don't show which way to go. A rather unknown meaning of the ways is indifference. In social matters, this card can stand for the fact that someone does not care or is neutral or indifferent from the emotional point of view.



23 MICE

loss, decrease, lack, reduction, theft, food, sacrifice

The *Mice* are a sign of loss and sacrifice. What matters most is the side they are eating on. Something is being reduced – good things as well as bad. When reading the Grand Tableau, the loss can be seen in the row beneath the *Mice*. They also denote aspects of life that we miss or that we ourselves miss out on.

In most cases the *Mice* suggest that something is slowly but steadily eroding the situation, and the querent needs to take action to address the issue before it becomes a bigger problem.



24 HEART

love, affection, understanding, agreement, charity

The *Heart* represents love, affection and harmony as well as understanding, forgiveness, and mindfulness since these attributes can be derived from the magical word of »love«.

Attention: The *Heart* does not say anything about a possible relationship, it merely speaks about love itself. And last but not least about self-love and self-care. Only when we love ourselves can we help others and do them good as well.



25 RING

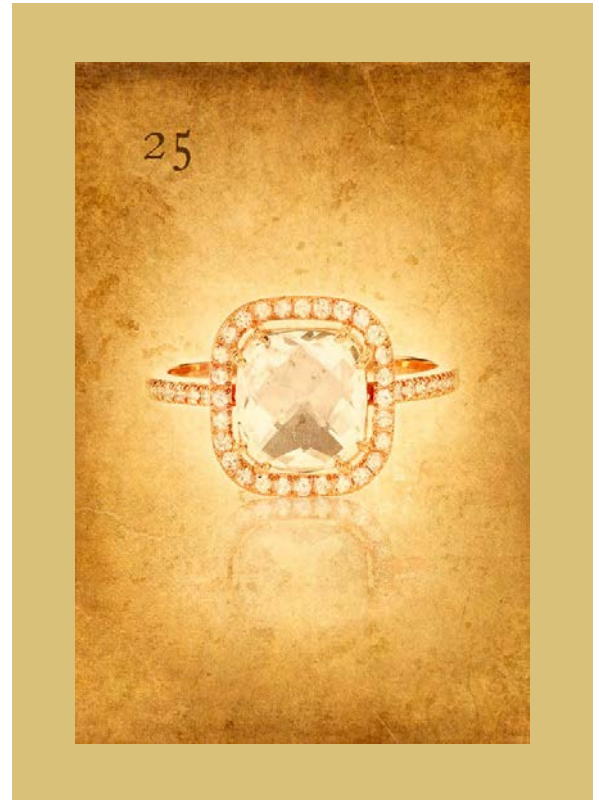
connection, contract, marriage, repetition, relationship, bond

The *Ring* symbolises connections and relationships of all kinds. It can show everything from a professional collaboration to marriage.

Attention: The *Ring* itself does not say anything about love or the success of a connection! For this, the other cards must be considered in combination.

The *Ring* is a sign for repetition. Situations and other things that happen to our lives repeatedly, no matter the intervals.

Also, the *Ring* can represent promises and contracts.

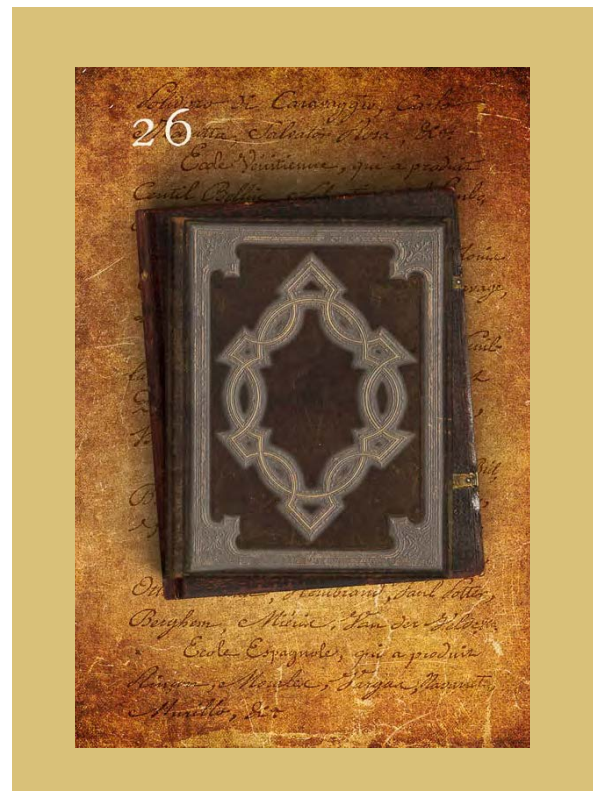


26 BOOK

secret, unknown, hidden, knowledge, insight, education

The *Book* is the keeper of secrets mystery. It is the exact opposite to the *Park* and looks to conceal or hush something up. It also symbolises everything we do not yet know. The *Book* card suggests that there is something to be learned or discovered, and that the querent may need to do some digging to uncover the truth. This can be a positive or negative thing, depending on the context of the reading.

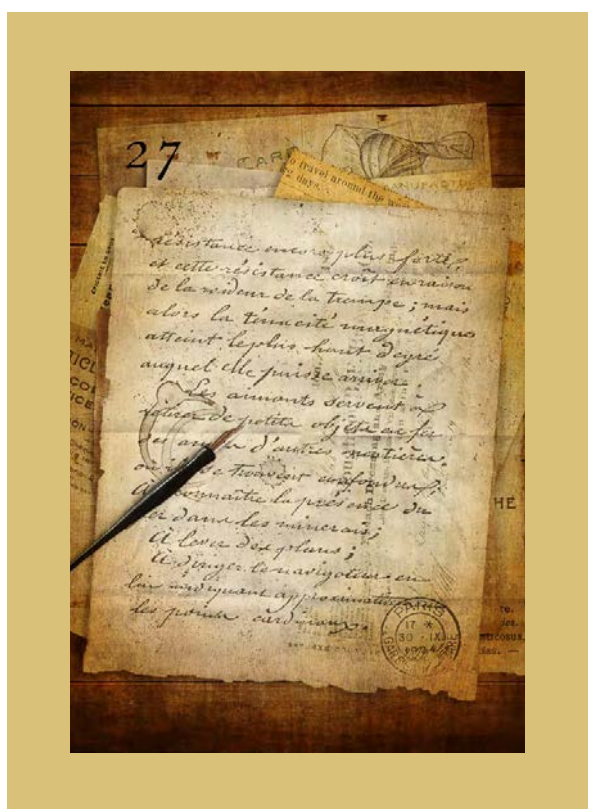
Moreover the *Book* represents education, knowledge and teaching. Only the *Key* card next to *Book* can unlock the secret and reveal the truth. This card is also a symbol for data, files, important documents and storage.



27 LETTER

communication, information, contact, news, message

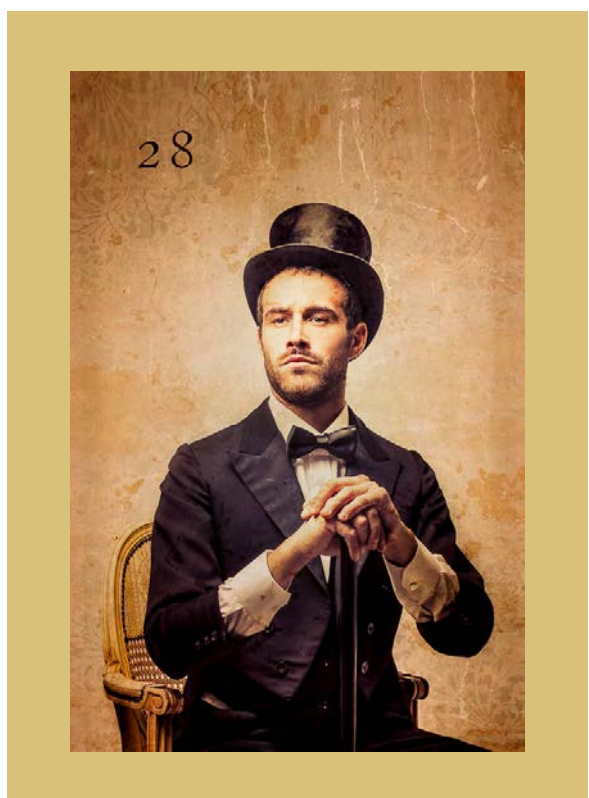
The *Letter* is a card dealing with everything related to communication. There are many means of communicating today and which method is used is hardly crucial, so the *Letter* represents them all. It represents news and messages, but only the cards surrounding it give the reader clues about the quality, content and frequency. Depending on the surrounding cards, the *Letter* card can indicate good news or bad news, but in either case, it suggests that the querent will soon hear something that will have an impact on their life.



28 MAN

male questioner or partner of the female questioner, man

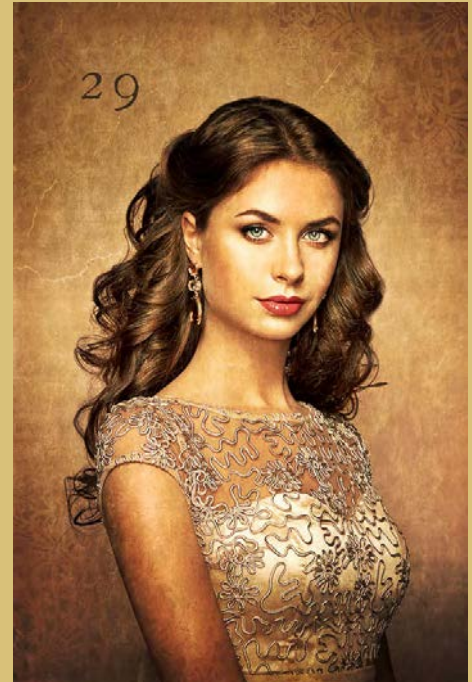
The *Man* represents a male questioner. If the questioner is female, the *Man* card is a proxy for her partner, spouse, friend, male relative or any other person most relevant to her. It always depends on the question asked and the querent's individual situation. Before starting the spread, the female questioner can define which person this proxy card should represent.



29 WOMAN

female questioner or partner of the male questioner, woman

The *Woman* represents a female questioner. If the questioner is male, the Female card is a proxy for his partner, wife, friend, female relative or any other person most relevant to him. It always depends on the question asked and the querent's individual situation. Before starting the spread, the male questioner can define which other relevant person this proxy card should represent.



30 LILY

sexuality, intimacy, support, forgiveness, peace, justice, harmony

The *Lily* can symbolise sexuality in questions regarding a relationship. For other questions it is your inner centre or shows harmony, peace and friendliness. It can also represent justice and balance.

Lily encourages you to find ways to cultivate inner peace and balance in your life, to seek forgiveness and let go of past hurts, and to embrace the wisdom and experience that comes with maturity. It also reminds you to seek out support, when you need it, and to offer your own support to others when they need it.



31 SUN

joy, success, energy, happiness, healing, confidence, pride

The *Sun* with its invigorating warmth represents the good aspects of life as well as joy and luck. It is a symbol of wealth and benevolence. Everything else disappears in its gleaming light. It is a card that represents a time of positivity, optimism, and high energy. Moreover the *Sun* can be associated with popularity and great success.

This card also reminds you to take pride in your accomplishments and to celebrate your successes. However, the *Sun* can also indicate a need to be careful not to become too overconfident or arrogant.



32 MOON

emotion, feelings, intuition, perception, wish, desire, interior

The *Moon* symbolises our emotions. It shows what we need and illuminates the subconscious. In connection with other cards, it indicates our emotional state and our wellbeing, which is always subject to change – like the moon itself. When asking questions about your professional life, the *Moon* can represent fame and approval. Spiritually, it connects to our intuition and perception.

The *Moon* suggests a time of introspection and reflection, where you may be exploring your deepest desires and needs.

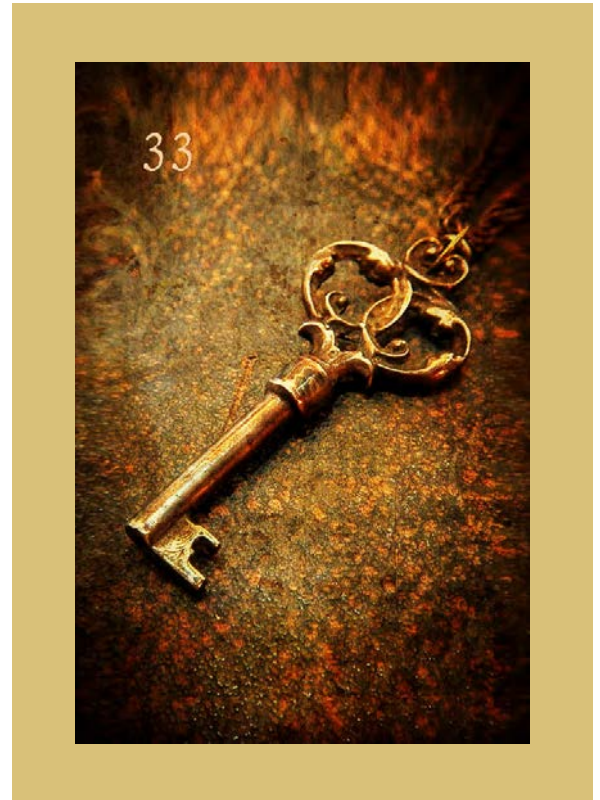


33 KEY

reality, fact, quality, confirmation, certainty, fulfillment

The *Key* leads the way into reality and the realm of facts. It represents tangible objects. I attribute characteristics like quality and competence but also responsibility and reliability to this card. This symbol is also called the key to success because it can hint at confirmation and successful endeavours.

The *Key* suggests a time of breakthroughs and solutions, where you may be able to unlock doors. It also signifies a period of fulfillment and accomplishment, where you are able to achieve your goals and find a sense of satisfaction and completion.

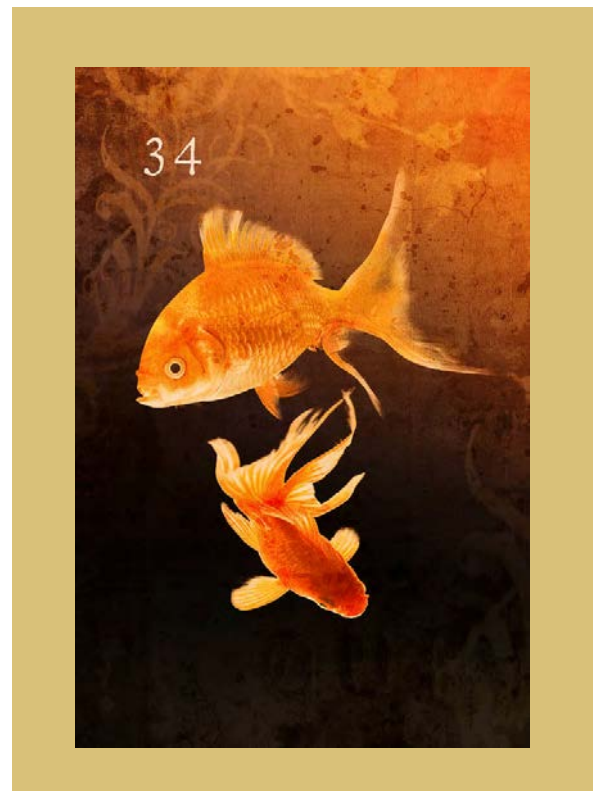


34 FISH

money, finances, psyche, fiction, escape, addiction

The *Fish* have two opposing meanings. On the one hand there is the rationality of money and finances. On the other the irrationality of our psyche and psychology in general. Moreover the *Fish* can describe fleeing in any severity of the concept – possibly even fleeing into an addiction.

Furthermore, the symbol of the *Fish* can also mean escapes into unreal worlds. From this also arises the aspect of not being tangible or bindable. Thus, the card of *Fish* is the opposite of *Key*, which depicts reality and facts.



35 ANCHOR

work, profession, goal, fixation, cling to trust, mutuality

The *Anchor* represents your professional life, no matter how you go about your work. Strength, trust and attachment are other important attributes. I consider reciprocity and mutuality to be key points even if they are not among the keywords in common use.

The *Anchor* symbolizes security and perseverance. This symbol represents a sense of grounding, a commitment to stability, and a willingness to hold on to what is important. However, the *Anchor* can indicate a need to be careful not to become too fixated or rigid in your thinking or behavior.

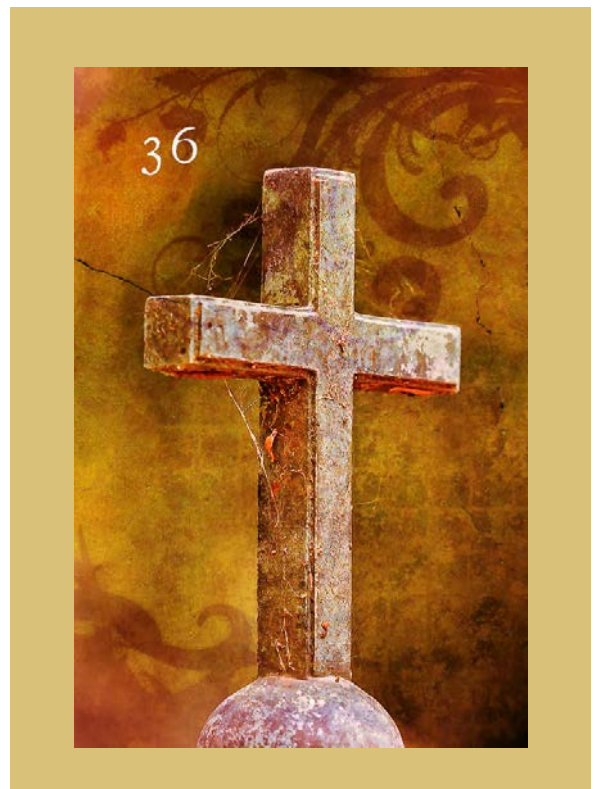


36 CROSS

fate, karma, destiny, necessity, importance, life task, priority

The *Cross* shows how and where fate and karma take effect. In mundane contexts it can also stand for necessities and important matters. It often serves as an amplifier for the cards surrounding it, intensifying both the good and the bad. The *Cross* always contains an important message and an important learning.

Thus, the *Cross* indicates the things in life that currently have priority and are therefore at the top of the to-do list. The *Cross* is the index finger that points to the inevitabilities and to everything that is urgent.



USING THE LENORMAND CARDS

There are many ways to spread the *Lenormand cards*. Most systems work with combinations: Two or three cards that came up together are connected to a meaning. Reading combinations is the basic principle of reading cards and can be learned through proper instruction and practise.

To start out with, I would recommend a small spread since it is easiest and provides a quick response to many questions. A small spread fits for all areas of life. You draw three cards and place them from left to right next to each other in order to combine them. It is crucial to ask the cards as specific a question as possible and set a time frame of three to four months at most.

Your questions could for example be: »How will this relationship develop in the next two weeks?« or »What should I do right now to improve the relationship between me and my colleague?« or »How will my job interview on Monday go?«.

You cannot ask the cards for the far future with this spread and will not receive a full overview for the topic or aspect of your life concerned by your question. Other spreads are more suited for these kinds of questions, e.g. the *Grand Tableau*. A great advantage of the small spread is the specific answer you receive to your specific question and the fact that you can always ask new questions concerning other areas without asking too many. This spread is as simple as it is precise, making it very versatile. Practising and reading the cards becomes very easy. You will learn quickly. I love using the small spread in my readings and make frequent use of it because of its concise answers.

While the small spread focuses on certain aspects of a topic, the *Grand Tableau* looks at the bigger picture. This 4x9 (or 4x8) spread is rather complex and requires a lot of knowledge and practise.

I compiled my expertise and experience with combinations and spreads and share them via channels as YouTube (weltdeslenormand) - so far only in German.

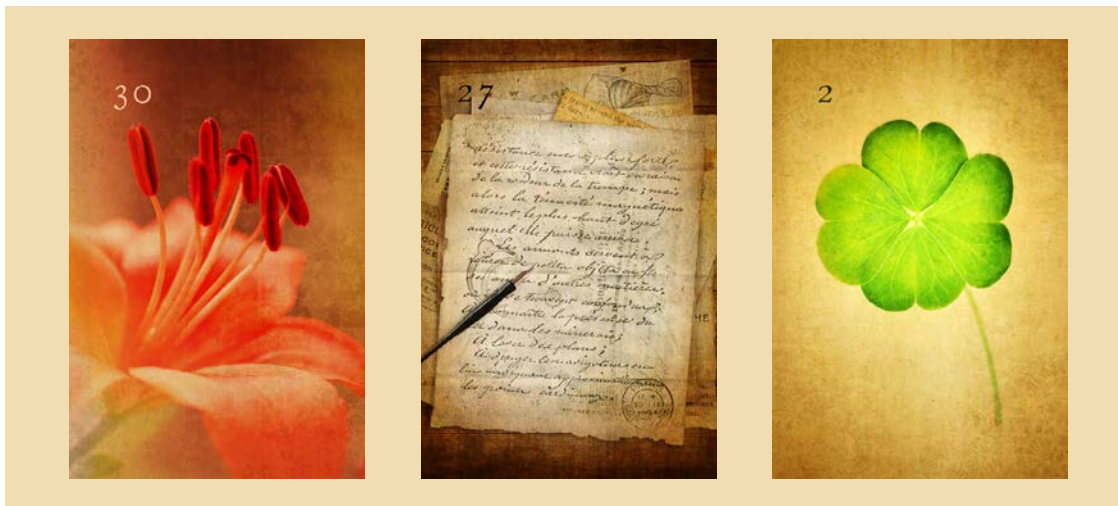


EXAMPLES FOR SMALL SPREADS

Following examples show how a spread of three cards can be interpreted. Try to link the meanings of the symbols into one clear statement. Keep the focus on your question. Pick the most accurate and helpful keyword according to your question. The cards do not necessarily have to be read from left to right.

Pay attention to whether there are predominantly positive, neutral or negative cards in the combination. According to this prevalent quality your prediction will be shaped. Keep your answer short and to the point.

1. What will the response to my sent message be?



Lily, Letter, Clover. I will receive a friendly, favourable (*Lily*) message (*Letter*) shortly (*Clover*).

2. What should I avoid at the moment?



Park, Sun, Coffin. Do not allow others or your surroundings (*Park*) to draw energy from you (*Sun and Coffin*) or don't give too much energy to your environment.

3. What can I do for myself right now?



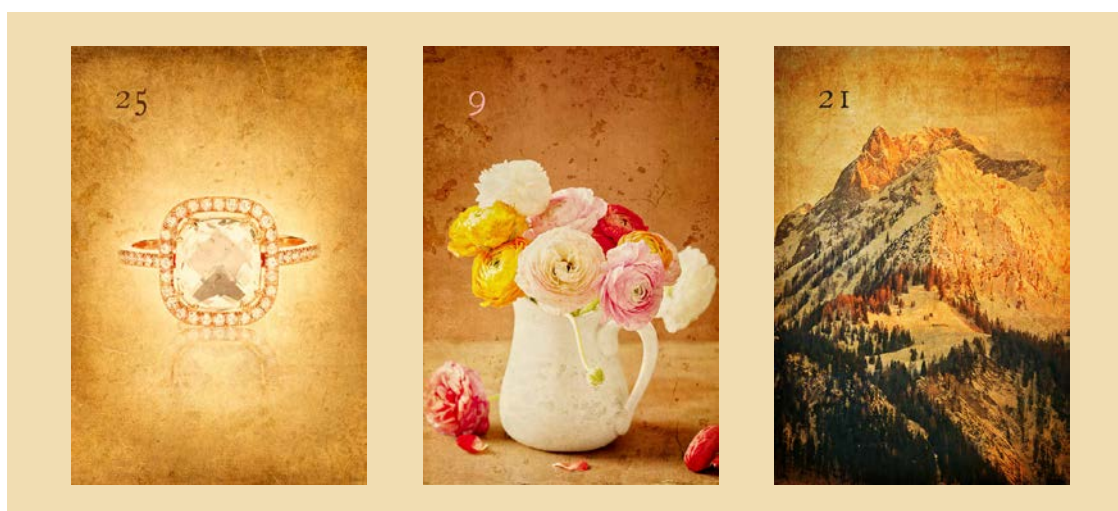
Rider, Sun, Tree. Go (*Rider*) to a place that gives you energy (*Sun*) or that is connected to pleasant memories. Calm down. (*Tree*)

4. How much sense does it make to buy a new car within the next 3 months?



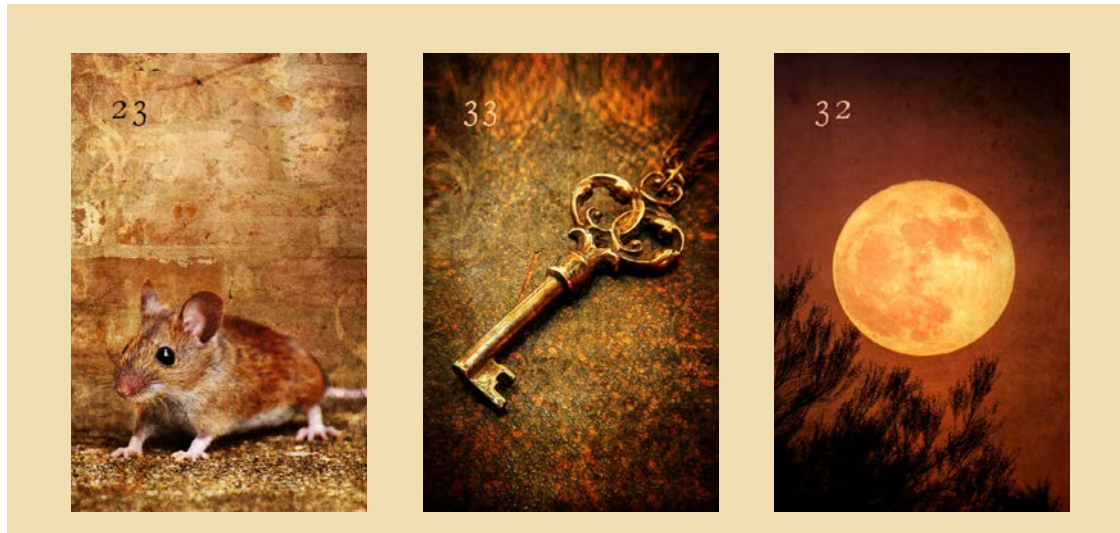
Key, Stork, Fox. Wrong point in time (*Stork and Fox*) to invest (*Key*) in a car. Ask three months later again. By then you will know why it was good to do without.

5. How will my next job interview go?



Ring, Flowers, Mountain. You will be sent a job offer (*Ring and Flowers*), but there will be a delay or difficulties which can be overcome (*Mountain*).

6. How does person X feel about me?



Mice, Key, Moon. That person is becoming more certain (*Key*) about its feelings (*Moon*). The *Mice* at the beginning of the spread refers to the increasing certainty.

7. Will my relationship become less rocky within the next two weeks?



Stork, Tower, Coffin. There is absolutely no (*Tower and Coffin*) change (*Stork*). The *Coffin* card does not nullify the negative energy of the *Tower*. Both together are like a wall that cannot be broken through. Now you could continue the reading by asking further questions, f.e. »What's the best way for me to deal with?«

MAY THE WISDOM OF THE
LENORMAND GUIDE YOU ON
YOUR JOURNEY.

*I wish you the best
Kathleen*

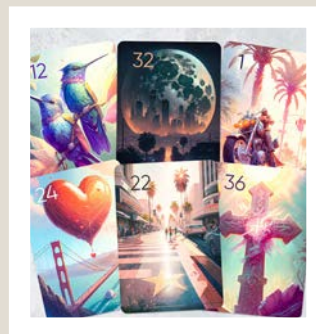
My card decks

ZENSEIKI LENORMAND



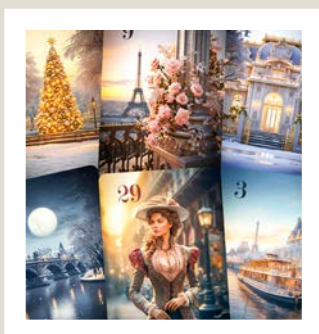
With the beautiful Zenseiki Lenormand you dive deep into the ancient soul of Japan. Its sacred places, mysterious myths and multifaceted traditions are reflected in the illustrations. A world of grace and mindfulness! Feel invited to feel ZEN at heart.

COSMIC CALIFORNIA LENORMAND



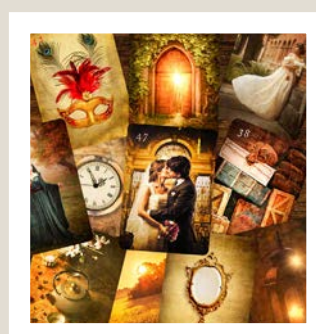
These cards are not just a tool for divination, but a bridge between you and the unique energy of California. Let the Cosmic California Lenormand cards guide you on your journey and provide clarity, inspiration, and insight.

WINTER IN PARIS LENORMAND



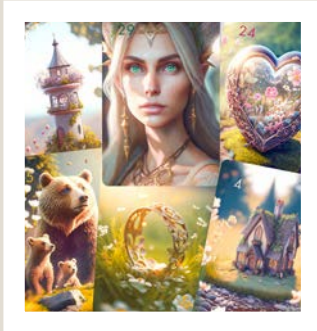
Travel back in time with the extraordinary Winter in Paris Lenormand. Discover the beauty and romance of old Paris, wrapped in a magical winter atmosphere. This deck of cards will enchant you.

EPIC LIGHT LENORMAND ADD-ONS



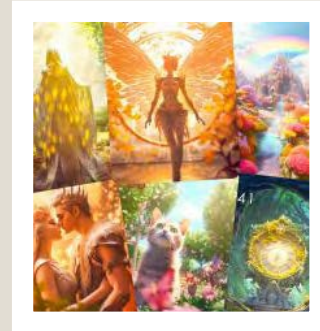
The classic Epic Light Lenormand deck of cards is expanded with this unique collection. It contains 36 new symbols which meaningfully continue and enrich the traditional symbols.

FAIRYLANDIA LENORMAND



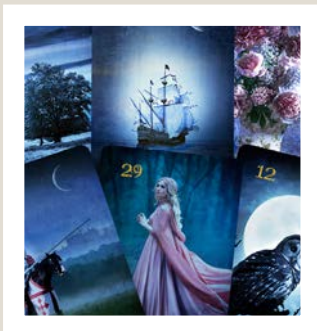
The Fairylandia Lenormand transports you to a photorealistic miniature fairy world filled with magical wonder and enchantment. It captures the essence of a mystical world and evokes the beauty of a fairy realm.

FAIRYLANDIA LENORMAND ADD-ONS



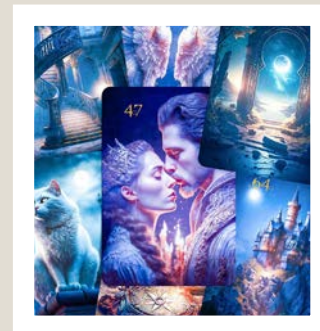
Proceed on your journey through magical Fairylandia with this expansion. The world of fairies and elves takes on a new dimension with the 36 additional cards.

KINGDOM`S NIGHT LENORMAND



Immerse yourself in the nocturnal atmosphere of a medieval kingdom with this exclusive Lenormand deck. The hours between dusk and dawn awaken mysticism and magic, surrounded by the enchanting essence of the night.

KINGDOM`S NIGHT LENORMAND ADD-ONS



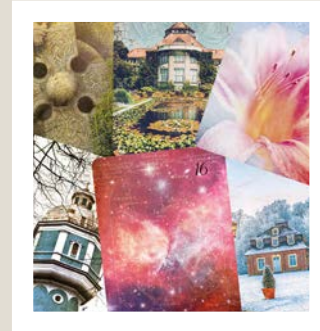
The Kingdom's Night Lenormand expansion is filled with further secrets and messages hidden in the mystical kingdom. With the 36 additional cards you will experience a unique magic that will let you dive still deeper into the world of Lenormand.

FLORANEUM LENORMAND



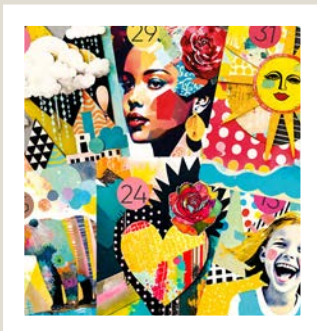
These hand drawn illustrations immerse you in a peace-loving realm of mediaval mystique. Embellished with flowery decor and clear focus on the symbol these cards convey a feeling of tranquility.

LICHTBLICK LENORMAND



The Lichtblick Lenormand is a shining deck with a very clear and easy to read message. It combines vintage elements with fresh, modern style and at the same time sends out light and cheerfulness.

FREEDOM LENORMAND



In Freedom Lenormand, each card is a piece of art in itself. This fancy deck combines effective art styles and stands out with its striking colors. Even with all the creativity, the symbols are easily recognizable.

Watch out on
www.etsy.com/shop/lenormandlove
for upcoming
decks!

The information in this guidebook is for entertainment purposes only and is not a substitute for medical, legal or other professional advice. Any liability of the author or the publisher is excluded.

Epic Light Lenormand

Copyright © 2024 Kathleen Bergmann

All rights reserved. Reproduction, in whole or in part, only with the written permission of the author.

Concept & text: Kathleen Bergmann

Design of the guidebook: Eileen Kummer

Design of the cards: Kathleen Bergmann

Printed in Germany

My website:

www.kathleen-bergmann.de

hello@reichdersterne.de

Follow me on Instagram:
[weltdeslenormand](https://www.instagram.com/weltdeslenormand)