

# SPRLEAF<sup>®</sup>

## User Manual



Scan the QR or visit [www.sprleaf.com](http://www.sprleaf.com)

Activate within 10 days of purchase to claim your  
extended limited 12-month warranty to 24 months.

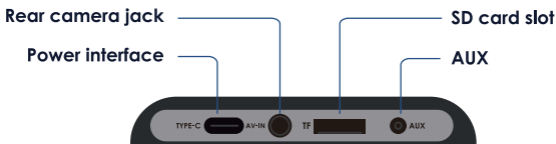
The information in this manual is subject to change without notice.

# Table of Contents

<b>Product Overview</b>	<b>2</b>
Menu Overview	2
Installation	3
Reverse Parking Assistance	3
Apple CarPlay	6
Android Auto	7
AirPlay	8
Super Link	9
BT Music	12
Wi-Fi Video	13
Dash Cam	14
Playback	15
Audio output	16
Device Settings	18
Brightness	21
Troubleshooting	22
<b>Specifications</b>	<b>24</b>
SD Card Requirements	25
<b>Warranty and Support</b>	<b>26</b>

# Product Overview

The uses two wide-angle cameras to capture footage of your surroundings as you drive and transmit them to the integrated device in real-time. With the help of this system, the driver can see the obstacles and pedestrians around the vehicle intuitively, effectively reducing the occurrence of scraping, collisions, collapses, and other accidents.



## Menu Overview



**Power**  
Screen power



**Airplay**  
Phone screen projection



**Home**  
return to main interface



**Android Cast**  
Mirror phone screen for Android device



**Brightness**  
Adjust brightness levels



**Super Link**  
Play videos online without a cell phone



**Volume**  
Adjust volume levels



**Wi-Fi Video**  
Connect smartphone to device



**Camera**  
View live camera view



**Audio output**  
Select audio output



**Apple CarPlay**  
Mirror phone screen for Apple device



**Playback**  
View dash cam footage



**Android Auto**  
Mirror phone screen for Android device



**Settings**  
Enter system settings

# Installation

## Step 1. Install

### 1.1 Prepare the Mounting Position:

Clean the dashboard or windshield: Ensure the area where you'll mount the camera is clean and free from dirt, oil, or debris. Use a mild cleaner to wipe the surface and dry it thoroughly.

### 1.2 Mount the Camera:

**Positioning:** Align the camera to get the desired angle and view of the rear. Rear dash cams come with adhesive mounts or brackets for attachment.

**Secure:** Use the adhesive or mounting bracket to securely attach the camera to the chosen spot. Ensure it's firmly fixed to avoid any movement or displacement.

**Red Wire Connect:** Red wire connect to reverse light positive, then plug the connector of the cable into the carplay rearview camera jack, the backup camera will display reverse image automatically once put the car into reverse gear.

## Step 2. Install the Memory Card

The Sprleaf accepts Class 10/UHS-3 or higher Micro SD memory cards up to 256GB. You will need to insert a memory card before begin recording.

Before inserting or removing a memory card, first ensure you've powered down the device. Gently push the memory card in until you hear a click, and allow the spring release to push the card out.

## Step 3. Power on the Camera and Format the Memory Card

Power the camera by connecting the charger to the car cigarette light and camera. Before you start using a new memory card, you MUST format the card within the camera using the format function. Always backup important data stored on the memory card before formatting.

To format the memory card, make sure you have inserted your memory card, then turn on the device by connecting to a power source. Press OK to stop recording. Then toggle to the format settings and confirm the selection. You may now disconnect from power. The camera will shut down after 3 seconds. The camera should begin recording automatically the next time it is powered on.

## Step 4. Mounting the Rear Camera and Wiring the Cables

### 4.1 Choose the Installation Location:

Near the License Plate: Mounting the camera near the license plate offers a clear rear view and ensures coverage of the back area.

### 4.2 Connect the Extension Cable:

Connect one end of the extension cable to the power input and video output ports on the rear dash cam.

### 4.3 Route the Extension Cable:

Securely route the extension cable along the interior of the vehicle, making sure to avoid any moving parts or obstructing airbags. Use cable clips or ties to secure the cable in place.

### 4.4 Connect to the Main Unit:

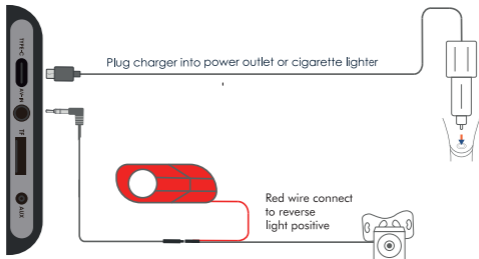
Connect the other end of the extension cable to the power input and video input ports on the main unit or display screen.

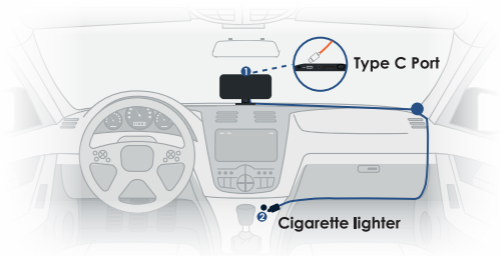
### 4.5 Secure Loose Wires:

Use cable clips or ties to secure any loose wiring to prevent them from hanging or interfering with other vehicle components.

## Step 5. Power on the Device

Power on the rear camera and main unit to test the connection. Ensure that both power and video signals are transmitted correctly.





To supply power, connect the ① Type C end of the power cable to the main device, and then insert the ② cigarette lighter plug into the appropriate socket inside your vehicle.

### Note:

Please use the charger provided with the Sprleaf unit. Using an unauthorized charger may easily damage the device or cause injuries due to insufficient voltage and excessive heat. Additionally, the FM transmission function may not work properly.

## Reverse Parking Assistance

Click on **Reverse line calibration** to enter the settings:



Park the car in the middle of the parking space.

**Status:** ☒ You can choose whether to turn the reverse line feature off or on.



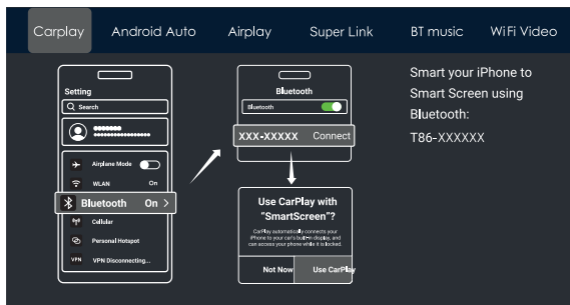
Manually drag the left, adjust the position of the reversing assist line up, left and right, so that the reverse assist line is horizontal to the parking line on the left of the ground.



Drag the at the bottom to adjust the position of the reverse line to the left and right.

After adjusting the reversing line, click **confirm** to save the calibration.

# Apple CarPlay



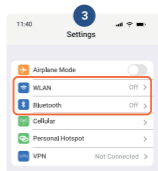
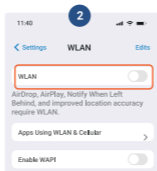
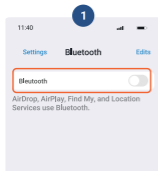
First turn on Wi-Fi and Bluetooth from your smartphone. Next, pair your phone to the device Bluetooth: T86-XXXXXX, as shown in the figure above. Once connected, you'll receive a pop-up on your smartphone. Refer to the figure above, and select 'Use CarPlay' to successfully complete Apple CarPlay integration.

## Note:

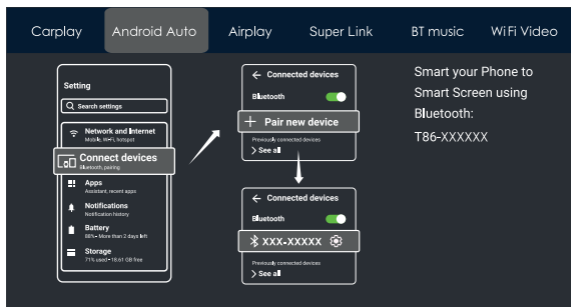
The device will automatically pair with the last connected phone.

## Note:

**Apple CarPlay is supported only with iPhone models starting from the iPhone 5 and newer.** Please turn off the Bluetooth button and then the WiFi button in your phone's settings to disconnect.

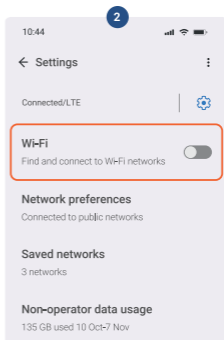
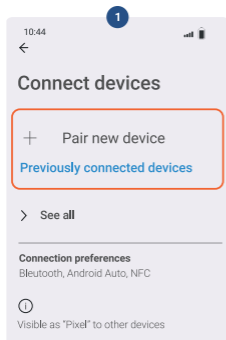


# Andorid Auto

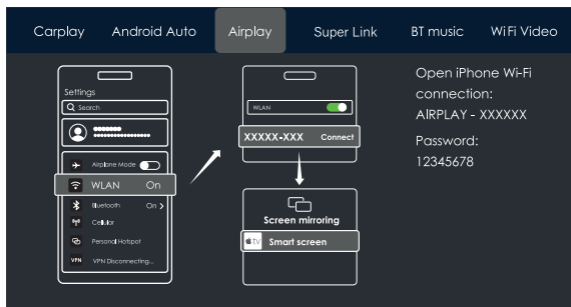


First, turn on Wi-Fi and Bluetooth from your smartphone settings. Then, select 'Pair new device' and connect to device Bluetooth: T86-XXXXXX

**Wireless Android Auto option is only supported for Android phones.** Please forget Bluetooth in your phone's settings and turn off the Wi-Fi button to disconnect.

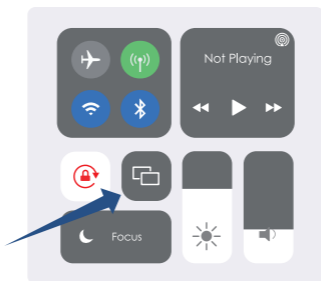


# AirPlay



Using AirPlay, you can wirelessly stream video, audio, and pictures from your iPhone to your car's entertainment system. Unlike Bluetooth, AirPlay operates over Wi-Fi for a more reliable connection.

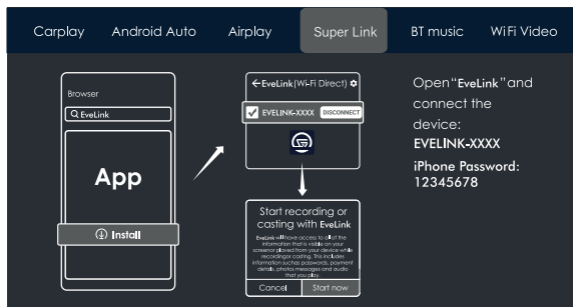
1. Requires an iPhone to connect to Wi-Fi



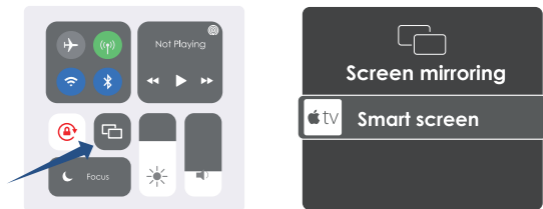
2. Select SmartScreen in Screen Mirroring in the iPhone Control Center

**Note:** AirPlay only supports Apple devices.

# Super Link

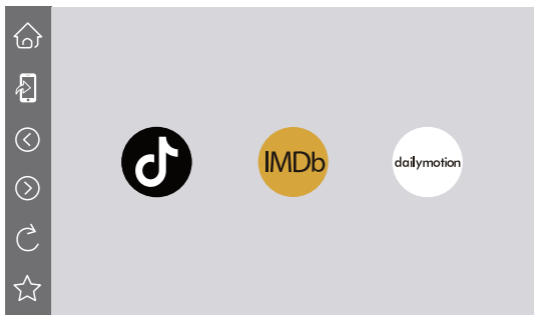


Using **Super Link**, you can wirelessly stream video, audio, and pictures from your iPhone to your car's entertainment system. Unlike Bluetooth, **Super Link** operates over Wi-Fi for a more reliable connection.



**Note:** Select SmartScreen in Screen Mirroring in the iPhone Control Center

Operation on a smart display: When the phone and the smart screen are successfully connected, you can start the reverse control and operation on the smart screen. The phone side can extinguish the screen, or use other applications, which will not affect the use of the cast screen interface. You can tap and select the [Online Video] button on the Smart Screen to watch major video sites online, such as YouTube, Twitch, and more.



Click the button to return directly to the shortcut menu selection interface.



Click the button to send the machine screen to phone to open.



Click the button to go back.



Click the button to move forward.

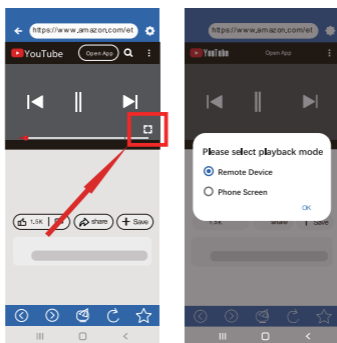









Click the button to refresh the current page.



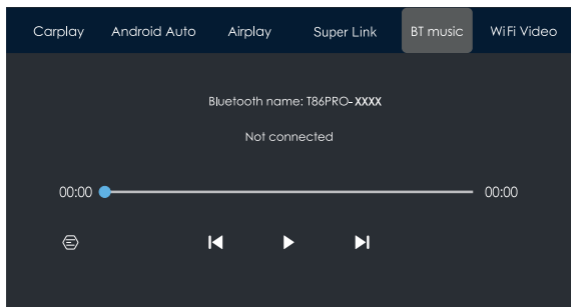
Click the button to bookmark the current web page to the shortcut menu bar.

Mobile operation: When the phone is successfully connected to the smart screen, it can also be controlled and operated on the phone. Click the [Online Video] button to enter the search page , you can search for any video URL, or click the shortcut below, the smart screen end can directly enter the web page. When you need to search, login or the web page display is not friendly, you can click the [Send to phone] button to send the screen to the phone to open the operation. After selecting the video playback on the phone side, you can click the [Full Screen] button and select to play the video in full screen on the smart screen or phone



-  Click the button to quickly return to the search interface.
-  Online video settings
-  Click the button to go back to the previous page.
-  Click the button to advance to the next page.
-  Click the button to send the screen of phone to Smartphone to open.
-  Click the button to refresh the current page.
-  Click the button to bookmark the current page to the shortcut menu bar.

## BT Music



First, activate the Wi-Fi and Bluetooth on your phone. Next, select the [BT Music] option. The Smart Screen will automatically enable Bluetooth, and its name will appear in the upper left corner. Connect your phone to the Smart Screen via Bluetooth to start playing music



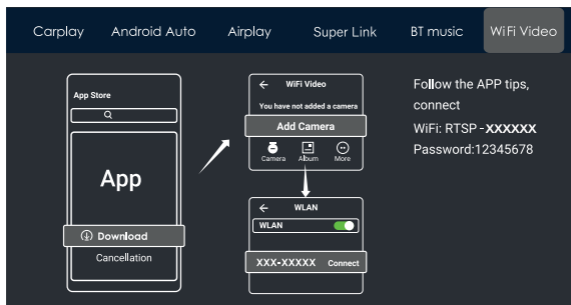
The buttons correspond to "previous song", "play/pause" and "next song"

Click on the Lyrics button  to display the lyrics.

### Note:

Some music streaming apps may not support the display lyrics function

# WiFi Video

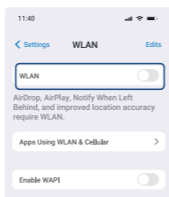


As shown in the figure above, scan the QR code to download the mobile app for dash cam footage. Open the app and follow the prompts to connect your phone to device Wi-Fi: RTSP-XXXXXX and enter password: 12345678. Once, connected you can transfer, manage, and view dash cam footage from the device display screen.

## Note:

Click the question mark for detailed connection steps and connection FAQs

Turn off the WiFi key on your phone to disconnect, and it will take one minute to disconnect before you can operate on the machine.



## Dash Cam



To stream live view from the front / rear camera, select the record button as shown in the figure above. Upon inserting the memory card, the device auto enters recording mode.



Recording On / Off



Lock current video for file



Take a picture



Return to home screen



Return to the mobile screen display



Audio recording On / Off

## Lock the current video

If too many videos are locked, **the first locked video will be overwritten.**

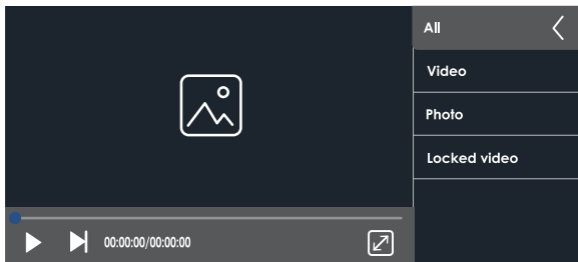
The number of videos that can be locked depends on the capacity of the SD memory card. 32G SD memory card can lock 40 videos, when locking the 41st video, the 41st video will overwrite the first one and the 42nd video will overwrite the second one.

64G SD memory card can store 80 locked videos, 128G SD memory card can store 160 locked videos, 256G SD memory card can store 320 locked videos.

**The SD card supports a minimum of 32GB and a maximum of 256GB!**

## Playback

As shown in the above figure, select ,Video Playback, to view dash cam footage.



Select from the menu to view, delete, lock, or unlock video footage and pictures.



Play / Pause



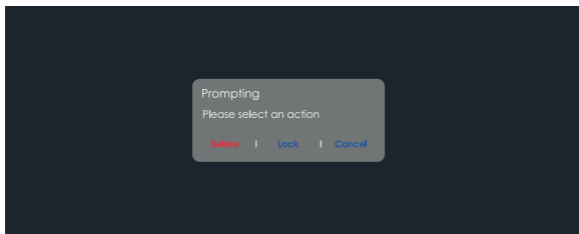
Full Screen



Next Photo / Video

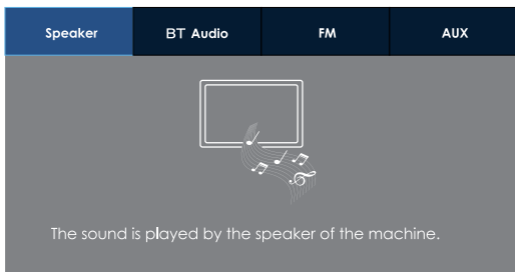


Return



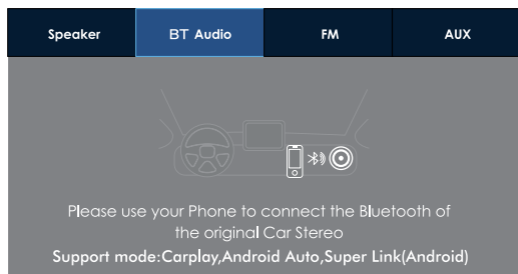
## Audio output

As shown in the figure above, select 'Audio Output' to configure settings.



### Speaker

The sound will be played from the speaker of the smart screen.



### BT Audio

Sound from smartphone will be transmitted through the vehicle's speakers.

Note: Adjust volume using vehicle controls.

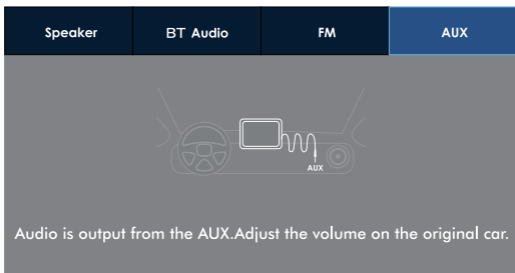


### FM

FM radio will be transmitted through the vehicle's speakers all the sounds of the device will be transmitted to the original car speakers through FM transmission

#### **Note:**

Adjust volume using vehicle controls.



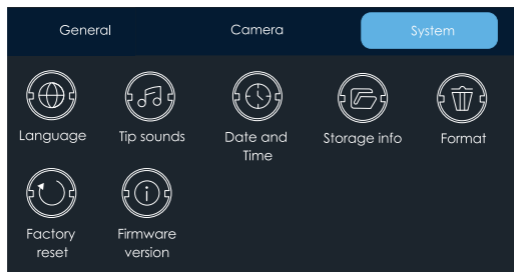
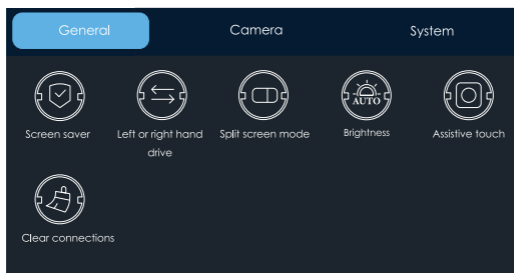
### AUX

Use the AUX cable to connect your phones audio to the device. Sound will be transmitted to the vehicle's speakers.

#### **Note:**

Adjust volume using vehicle controls

# Device Settings





Click [**Screen saver**] to enter settings: screensaver can be set as:  
Turn off / 10 seconds / 30 seconds / 1 minute.

After setting for 10 seconds or 30 seconds, if the system does not operate for the corresponding time, the screen **will** automatically turn off. After entering the screensaver, press the power button again to turn on the screen.



Click on [**left or right hand drive**] to enter the settings:

You can choose between left-hand or right-hand drive, and the shortcut menu bar in Carplay.

Select left rudder on the left, select right rudder on the right



[**Split screen mode**] see details below.



Select [**Brightness**] to configure device display brightness levels.



[**Assistive touch**] It's a hover window button in your phone's screen casting mode, you can choose to turn it off or on.



Click Assistive Touch to display the shortcut menu: [Back to Home], [Record Video Screen], [Volume Adjustment], [Brightness Adjustment].



If the customer has changed mobile phones, click to clear the connection records of **all** previous mobile phones.



Click on [**Camera Format**] to input settings: 720P / 720N / 1080P / 1080N

Two systems, choose a standard camera system.

**Note**

Selecting an unrelated camera system **will** result in abnormal display and video images. If the camera display screen or color is abnormal, please check if the corresponding camera system has been selected.



Click to enter the **[Record resolution]** settings: 720P / 1080P / 2.5K / 4K (different models, options will be somewhat different, subject to the actual object)



Click **[Segment duration]** to enter the setting of the video segmentation time:

Video segmentation time is optional: 1 minutes / 3 minutes / 5 minutes.

The system defaults to 3 minutes.



Click on **[Collision Sensitivity]** to enter the settings:

You can choose high / medium / low / off

When the sensitivity is turned on and the vehicle collides, the machine will automatically lock the video being recorded to ensure that it will not be overwritten or deleted by the loop recording.



Click **[Microphone]** to enter the settings:

You can choose to close or open.



Click on **[Rear mirror image]** to enter the settings: you can choose to turn it off or on.

This option makes it easier for customers to flexibly install cameras.



**[Reverse line calibration]** Please refer to the instructions below the form.



Click on **[Language]** to enter the settings: Language can be set: Simplified Chinese / Traditional Chinese / English / Russian / Spanish / French / German / Japanese / Korean / Italian / Portuguese



Click on the **[Tip sound]** to enter the settings: you can choose to turn it off or on.

After selecting off, the power on sound effect and touch and button sound effects will be turned off.

(Different models may have different options, subject to the actual product)



Click on **[Date and Time]** to enter the settings:

Set up separately: year / month / day / time / minute / second / 12H system / 24H system



Click [**Storage info**] to enter the menu: You can view the information of the SD card. The former item indicates the remaining available capacity, and the former item indicates the total capacity.



Click [**Format**] to enter the settings:  
This option formats **all** data information inserted.  
It is recommended to manually form format the first insert SD card to ensure sufficient card capacity.

**Note**

It is recommended that users manually format the SD card regularly.

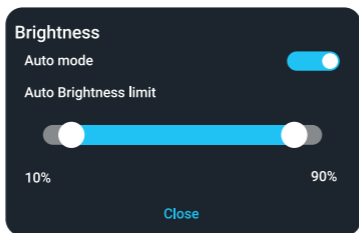


Click [**Factory reset**] to enter the settings:  
Restore factory settings, and the system **will** restore **all** settings to their original state.



Click on [**Firmware version**] to enter the menu:  
This option **allows** you to see the current basic version for easy confirmation.

## Brightness



You can set the auto-brightness on / off, and you can also set the auto-brightness min / max values.

When Auto Brightness mode is turned on, you cannot adjust the volume manually. Drag the left white dot button to set the minimum brightness value and drag the right white dot button to set the maximum brightness value. The setting **will** be saved automatically when it is completed, and you can exit the setting by clicking the [**Close**] button.

# Troubleshooting

Item	Problem	Solution
1	Unable to turn on the camera	<ol style="list-style-type: none"><li>1 Check whether the DC head of the cigarette lighter power cord is damaged or aging.</li><li>2 Check whether the fuse of the power plug is disconnected or burned.</li></ol>
2	No touch phenomenon	<ol style="list-style-type: none"><li>1 Touch is invalid during power-on, wait for normal power-on before operation.</li><li>2 Check whether the touch is damaged, do not the screen with sharp objects, it is easy to scratch and damage.</li></ol>
3	The rear view camera has no image	<ol style="list-style-type: none"><li>1 Buy the manufacture's matching rear-view camera it can be used.</li><li>2 Whether the rear camera is inserted to the bottom.</li><li>3 Check if the camera format matches</li></ol>
4	Product Overheat	<ol style="list-style-type: none"><li>1 Avoid direct sunlight or exposure to sunlight during use. The norm operating temperature of Camera is -4~149°F. After disconnecting the power supply, the temperature of Camera will be lower than 149 F and work normally.</li></ol>
5	Carplay cannot connect	<ol style="list-style-type: none"><li>1 The first connection takes a little longer.</li><li>2 Only iPhone supports Carplay.</li><li>3 Check that the WiFi and Bluetooth function of the mobile phone are normal.</li><li>4 Enter Settings - General - Carplay vehicle, delete all records and reconnect.</li><li>5 Restart the iPhone and reconnect it.</li></ol>

Item	Problem	Solution
6	Android Auto cannot connect	<ol style="list-style-type: none"> <li>1 Only Android phones are supported.</li> <li>2 Update Auto and related applications on mobile phones to the latest version.</li> <li>3 Do not enable VPN on the mobile phone</li> <li>4 Check that the WiFi and Bluetooth functions of the mobile phone are normal.</li> <li>5 Restart the Android phone and connect it again.</li> </ol>
7	Do not save date	<ol style="list-style-type: none"> <li>1 Charging the device with the included charging cable for 4-6 hours.</li> <li>2 Update the system by downloading the latest software package.</li> </ol>

#### Reminder:

Please ensure no interference between your smartphone and the device, and that the Wi-Fi/Bluetooth signal communication is smooth, otherwise the product functions cannot be used smoothly.

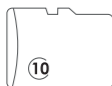
# Specification

System	Language	Simplified Chinese / Traditional Chinese / English / Russian / Spanish / French / German / Japanese / Korean / Italian / Portuguese
	Operation	Touchscreen
Video input	Camera Type	Front + Rear
	Recording Mode	Auto On / Off
	Resolution	<b>Front:</b> 720p / 1080p / 2.5K / 4K <b>Front + Rear:</b> 720P+720N / 1080P+1080N
Video display	Display	IPS Touchscreen
	Screen Saver Mode	1min. / 3 min. / 5 min. / Off
Reverse display	Reverse display	Stream rear camera view on display screen
	Reverse Park Assist	Auto Backup Cam
Smart Internet	Wi-Fi	Apple CarPlay / Android Auto / 'Connect' Dash Cam Mobile App
	Audio	Bluetooth / CarPlay / Android Auto / AUX

<b>The video store</b>	<b>SD card</b>	CLASS10 / U1 / 32GB - 256GB
<b>Audio part</b>	<b>The microphone</b>	Support microphone recording, menu can be set to turn off
<b>Power part</b>	<b>Input Voltage</b>	Range 7-32V / Overvoltage Protection / Reverse Polarity Protection
<b>Power consumption</b>	<b>Power Supply</b>	10W (screen display, 2-channel camera recording)
<b>Other</b>	<b>Operating Temperature</b>	-4 ~149°F
	<b>Stream Media</b>	Mirror phone to car screen

## SD Card Requirements

The quality of the SD card has a significant impact on the stability of video recording. To record safely, please use a MicroSDXC card that has at least 32GB and up-to 256GB storage w/ Speed Class10. It's important to use SD cards from major brands such as Sprleaf, SanDisk, Kingston, Toshiba, and Samsung.



# Warranty & Support

## Warranty

The **Sprleaf** comes with a full 12-month warranty. If you register your product on our official site <https://www.sprleaf.com> you can extend the warranty to 24 months.

## Support

If you have any questions regarding your product, please do not hesitate to contact us at [contact@sprleaf.com](mailto:contact@sprleaf.com). Queries are typically answered within 12-24 hours.

## Your opinion matters

Sprleaf is firmly committed to always improving our products, services, and user experience. If you have any thoughts on how we can do even better, we welcome your constructive feedback and suggestions.

Connect with us today at [contact@sprleaf.com](mailto:contact@sprleaf.com).

**Thank you for choosing Sprleaf!**



Scan the QR or visit [www.sprleaf.com](http://www.sprleaf.com)  
Activate within 10 days of purchase to claim your  
extended limited 12-month warranty to 24 months.

# SPRLEAF



MADE IN CHINA