



Air Conditioning & Heating

Product Overview

OUTDOOR UNITS

Description	Tonnage	Legacy	W	D	H	MCA	MOP	Compressor	2023 Models	W	D	H	MCA	MOP	Compressor
Base Eff AC North	1.5	GSX130181	26	26	27½	8.2	15	Rotary	GSXN3N1810	26	26	27½	8.3	15	Rotary
Base Eff AC North	2	GSX130241	26	26	27½	10.3	15	Rotary	GSXN3N2410	26	26	32½	11.2	15	Rotary
Base Eff AC North	2.5	GSX130301	29	29	32½	13.8	20	Scroll	GSXN3N3010	29	29	32½	16.1	25	Rotary
Base Eff AC North	3	GSX130361	29	29	32½	19	30	Scroll	GSXN3N3610	29	29	32½	18.6	30	Scroll
Base Eff AC North	3.5	GSX130421	29	29	36¼	23.8	40	Scroll	GSXN3N4210	29	29	39½	23.1	40	Scroll
Base Eff AC North	4	GSX130481	35½	35½	36¼	26.3	45	Scroll	GSXN3N4810	35½	35½	35½	24.4	45	Scroll
Base Eff AC North	5	GSX130601	35½	35½	36¼	32.7	50	Scroll	GSXN3N6010	35½	35½	39½	33.3	50	Scroll

Base Eff AC South	1.5	GSX140181	23	23	25¾	8.2	15	Rotary	GSXN401810	26	26	27½	8.3	15	Rotary
Base Eff AC South	2	GSX140241	26	26	27½	10.3	15	Rotary	GSXN402410	26	26	32½	11.2	15	Rotary
Base Eff AC South	2.5	GSX140301	29	29	32½	16.1	25	Rotary	GSXN403010	29	29	39½	15.5	25	Rotary
Base Eff AC South	3	GSX140361	29	29	32½	18	30	Scroll	GSXN403610	35½	35½	35½	21	35	Scroll
Base Eff AC South	3.5	GSX140421	29	29	36¼	21.8	35	Scroll	GSXN404210	35½	35½	39½	23.1	40	Scroll
Base Eff AC South	4	GSX140481	35½	35½	36¼	26.2	45	Scroll	GSXN404810	35½	35½	39½	26.2	45	Scroll
Base Eff AC South	5	GSX140601	35½	35½	38¼	32.6	50	Scroll	GSXN406010	35½	35½	36¾	33.3	50	Scroll

Base Eff AC South Plus	1.5	GSX140181	23	23	25¾	8.2	15	Rotary	GSXB401810	26	26	32½	8.3	15	Rotary
Base Eff AC South Plus	2	GSX140241	26	26	27½	10.3	15	Rotary	GSXB402410	29	29	32½	15.3	25	Scroll
Base Eff AC South Plus	2.5	GSX140301	29	29	32½	16.1	25	Rotary	GSXB403010	35½	35½	39½	17	25	Scroll
Base Eff AC South Plus	3	GSX140361	29	29	32½	18	30	Scroll	GSXB403610	35½	35½	39½	18.6	30	Scroll
Base Eff AC South Plus	3.5	GSX140421	29	29	36¼	21.8	35	Scroll	GSXB404210	35½	35½	36¾	23.4	40	Scroll
Base Eff AC South Plus	4	GSX140481	35½	35½	36¼	26.2	45	Scroll	GSXB404810	35½	35½	36¾	26.2	45	Scroll
Base Eff AC South Plus	5	GSX140601	35½	35½	38¼	32.6	50	Scroll	GSXB406010	35½	35½	41½	32.4	50	Scroll

Multi-family AC	1.5	GSX140191	26	26	27½	12	20	Scroll	GSXM401810	26	26	27½	11.9	20	Scroll
Multi-family AC	2	GSX140251	26	26	32½	17.6	30	Scroll	GSXM402410	29	29	32½	15.4	25	Scroll
Multi-family AC	2.5	GSX140311	29	29	32½	17	25	Scroll	GSXM403010	35½	35½	39½	17	25	Scroll
Multi-family AC	3	GSX140371	29	29	32½	18.6	30	Scroll	GSXM403610	35½	35½	39½	18.6	30	Scroll

AC = Air Conditioners / HP = Heat Pump / GE = Gas Electric / DF = Dual Fuel
 AH = Air Handler / MF = Multi-family / PKG = Packaged Unit

continued on next page >

Goodman Product Overview / Updated Summer 2023

Description	Tonnage	Legacy	W	D	H	MCA	MOP	Compressor	2023 Models	W	D	H	MCA	MOP	Compressor
High Spec AC	1.5	GSX160181	29	29	32	12.2	20	Scroll	GSXH501810	26	26	27 ¹ / ₈	11.9	20	Scroll
High Spec AC	2	GSX160241	29	29	32	17.8	30	Scroll	GSXH502410	29	29	32 ¹ / ₈	15.3	25	Scroll
High Spec AC	2.5	GSX160301	29	29	35 ¹ / ₂	17	25	Scroll	GSXH503010	35 ¹ / ₂	35 ¹ / ₂	39 ⁵ / ₈	17	25	Scroll
High Spec AC	3	GSX160361	29	29	39 ¹ / ₂	18.6	30	Scroll	GSXH503610	35 ¹ / ₂	35 ¹ / ₂	39 ⁵ / ₈	18.6	30	Scroll
High Spec AC	3.5	GSX160421	35 ¹ / ₂	35 ¹ / ₂	35 ³ / ₄	23.3	40	Scroll	GSXH504210	35 ¹ / ₂	35 ¹ / ₂	36 ⁷ / ₁₆	23.4	40	Scroll
High Spec AC	4	GSX160481	35 ¹ / ₂	35 ¹ / ₂	39 ¹ / ₂	23.7	40	Scroll	GSXH504810	35 ¹ / ₂	35 ¹ / ₂	36 ⁷ / ₁₆	26.2	45	Scroll
High Spec AC	5	GSX160601	35 ¹ / ₂	35 ¹ / ₂	37 ³ / ₄	29.6	50	2-Stg Scroll	GSXH506010	35 ¹ / ₂	35 ¹ / ₂	41 ⁵ / ₈	32.4	50	2-Stg Scroll

Two-Stage AC	2	GSXC160241	29 ³ / ₄	29 ³ / ₄	32 ¹ / ₂	13.6	20	2-Stg Scroll	GSXC702410	35 ¹ / ₂	35 ¹ / ₂	39 ⁹ / ₁₆	15.3	25	2-Stg Scroll
Two-Stage AC	3	GSXC160361	35 ¹ / ₂	35 ¹ / ₂	36 ¹ / ₂	19.7	30	2-Stg Scroll	GSXC703610	35 ¹ / ₂	35 ¹ / ₂	39 ⁹ / ₁₆	24.1	40	2-Stg Scroll
Two-Stage AC	4	GSXC160481	35 ¹ / ₂	35 ¹ / ₂	37	26.7	45	2-Stg Scroll	GSXC704810	35 ¹ / ₂	35 ¹ / ₂	41 ⁵ / ₈	28.3	45	2-Stg Scroll
Two-Stage AC	5	GSXC160601	35 ¹ / ₂	35 ¹ / ₂	42 ¹ / ₄	31.4	50	2-Stg Scroll	GSXC706010	35 ¹ / ₂	35 ¹ / ₂	41 ⁵ / ₈	32.4	50	2-Stg Scroll

Two-Stage AC	2	GSXC180241	35 ¹ / ₂	35 ¹ / ₂	40	15.3	25	2-Stg Scroll	GSXC702410	35 ¹ / ₂	35 ¹ / ₂	39 ⁹ / ₁₆	15.3	25	2-Stg Scroll
Two-Stage AC	3	GSXC180361	35 ¹ / ₂	35 ¹ / ₂	40	21.3	35	2-Stg Scroll	GSXC703610	35 ¹ / ₂	35 ¹ / ₂	39 ⁹ / ₁₆	24.1	40	2-Stg Scroll
Two-Stage AC	4	GSXC180481	35 ¹ / ₂	35 ¹ / ₂	42 ¹ / ₄	28.3	45	2-Stg Scroll	GSXC704810	35 ¹ / ₂	35 ¹ / ₂	41 ⁵ / ₈	28.3	45	2-Stg Scroll
Two-Stage AC	5	GSXC180601	35 ¹ / ₂	35 ¹ / ₂	42 ¹ / ₄	31.4	50	2-Stg Scroll	GSXC706010	35 ¹ / ₂	35 ¹ / ₂	41 ⁵ / ₈	32.4	50	2-Stg Scroll

Top Flow Inverter AC	2	GVXC200241	35 ¹ / ₂	35 ¹ / ₂	38 ³ / ₄	15.2	20	Swing	GSXV902410	35 ¹ / ₂	35 ¹ / ₂	38 ³ / ₁₆	15.2	20	Swing
Top Flow Inverter AC	3	GVXC200361	35 ¹ / ₂	35 ¹ / ₂	38 ³ / ₄	20.6	25	Swing	GSXV903610	35 ¹ / ₂	35 ¹ / ₂	38 ³ / ₁₆	20.6	25	Swing
Top Flow Inverter AC	4	GVXC200481	35 ¹ / ₂	35 ¹ / ₂	41 ³ / ₄	30.1	35	Swing	GSXV904810	35 ¹ / ₂	35 ¹ / ₂	41 ⁵ / ₈	30.1	35	Swing
Top Flow Inverter AC	5	GSXC200601	35 ¹ / ₂	35 ¹ / ₂	41 ³ / ₄	31.1	35	Swing	GSXV906010	35 ¹ / ₂	35 ¹ / ₂	41 ⁵ / ₈	31.1	35	Swing

Base Eff HP	1.5	GSZ140181	29	29	34 ¹ / ₂	8.5	15	Rotary	GSZB401810	29	29	35 ⁵ / ₈	8.6	15	Rotary
Base Eff HP	2	GSZ140241	29	29	34 ¹ / ₂	10.6	15	Rotary	GSZB402410	29	29	35 ⁵ / ₈	11.5	15	Rotary
Base Eff HP	2.5	GSZ140301	29	29	36 ¹ / ₄	17.8	30	Scroll	GSZB403010	29	29	39 ¹¹ / ₁₆	18.6	30	Scroll
Base Eff HP	3	GSZ140361	29	29	36 ¹ / ₄	19.3	30	Scroll	GSZB403610	35 ¹ / ₂	35 ¹ / ₂	39 ⁵ / ₈	21	35	Scroll
Base Eff HP	3.5	GSZ140421	35 ¹ / ₂	35 ¹ / ₂	39 ³ / ₄	22	35	Scroll	GSZB404210	35 ¹ / ₂	35 ¹ / ₂	35 ¹³ / ₁₆	23.4	40	Scroll
Base Eff HP	4	GSZ140481	29	29	36 ¹ / ₄	24.4	40	Scroll	GSZB404810	35 ¹ / ₂	35 ¹ / ₂	36 ⁷ / ₁₆	26.2	45	Scroll
Base Eff HP	5	GSZ140601	35 ¹ / ₂	35 ¹ / ₂	34 ¹ / ₂	34.3	60	Scroll	GSZB406010	35 ¹ / ₂	35 ¹ / ₂	41 ⁵ / ₈	33.3	50	Scroll

Description	Tonnage	Legacy	W	D	H	MCA	MOP	Compressor	2023 Models	W	D	H	MCA	MOP	Compressor
Multi-family HP	1.5	GSZ140191	29	29	34½	12.4	20	Scroll	GSZM401810	29	29	35⅞	12.2	20	Scroll
Multi-family HP	2	GSZ140251	29	29	34½	14.7	25	Scroll	GSZM402410	29	29	35⅞	15.3	25	Scroll
Multi-family HP	2.5	GSZ140311	35½	35½	34⅝	17.9	30	Scroll	GSZM403010	29	29	39⅞	18.6	30	Scroll
Multi-family HP	3	GSZ140371	35½	35½	40	18.9	30	Scroll	GSZM403610	35½	35½	39⅞	21	35	Scroll

High Spec HP	1.5	GSZ160181	29	29	36⅞	12.2	20	Scroll	GSZH501810	29	29	39⅞	12.2	20	Scroll
High Spec HP	2	GSZ160241	35½	35½	34⅝	14.7	25	Scroll	GSZH502410	35½	35½	35⅞	15.3	25	Scroll
High Spec HP	2.5	GSZ160301	35½	35½	34⅝	18	30	Scroll	GSZH503010	35½	35½	39⅞	18.6	30	Scroll
High Spec HP	3	GSZ160361	35½	35½	40	18.9	30	Scroll	GSZH503610	35½	35½	39⅞	22.8	35	Scroll
High Spec HP	3.5	GSZ160421	29	29	36⅞	22.3	35	Scroll	GSZH504210	35½	35½	35⅞	23.4	40	Scroll
High Spec HP	4	GSZ160481	35½	35½	34⅝	26.2	45	Scroll	GSZH504810	35½	35½	36⅞	26.2	45	Scroll
High Spec HP	5	GSZ160601	35½	35½	40	37	60	Scroll	GSZH506010	35½	35½	41⅞	33	50	2-Stg Scroll

Two-Stage HP	2	GSZC160241	35½	35½	34⅝	13.5	20	2-Stg Scroll	GSZC702410	35½	35½	39⅞	16.4	25	2-Stg Scroll
Two-Stage HP	3	GSZC160361	35½	35½	40	19.5	30	2-Stg Scroll	GSZC703610	35½	35½	35⅞	24.1	40	2-Stg Scroll
Two-Stage HP	4	GSZC160481	35½	35½	34⅝	26.5	45	2-Stg Scroll	GSZC704810	35½	35½	41⅞	27.7	45	2-Stg Scroll
Two-Stage HP	5	GSZC160601	35½	35½	40	31.4	50	2-Stg Scroll	GSZC706010	35½	35½	41⅞	32.4	50	2-Stg Scroll

Two-Stage HP	2	GSZC180241	35½	35½	40	15.3	25	2-Stg Scroll	GSZC702410	35½	35½	39⅞	16.4	25	2-Stg Scroll
Two-Stage HP	3	GSZC180361	35½	35½	34⅝	21.3	35	2-Stg Scroll	GSZC703610	35½	35½	35⅞	24.1	40	2-Stg Scroll
Two-Stage HP	4	GSZC180481	35½	35½	40	28.3	45	2-Stg Scroll	GSZC704810	35½	35½	41⅞	27.7	45	2-Stg Scroll
Two-Stage HP	5	GSZC180601	35½	35½	40	31.4	50	2-Stg Scroll	GSZC706010	35½	35½	41⅞	32.4	50	2-Stg Scroll

Top Flow Inverter HP	2	GVZC200241	35½	35½	38¼	15.2	20	Swing	GSZV902410	35½	35½	38¼	15.2	20	Swing
Top Flow Inverter HP	3	GVZC200361	35½	35½	41¼	29.8	30	Swing	GSZV903610	35½	35½	41⅞	29.8	30	Swing
Top Flow Inverter HP	4	GVZC200481	35½	35½	41¼	29.8	30	Swing	GSZV904810	35½	35½	41⅞	29.8	30	Swing
Top Flow Inverter HP	5	GVZC200601	35½	35½	41¼	30.6	35	Swing	GSZV906010	35½	35½	41⅞	30.6	35	Swing



Air Conditioning & Heating

Product Overview

RES PACKS

Description	Tonnage	Legacy	W	D	H	MCA	MOP	Compressor	2023 Models	W	D	H	MCA	MOP	Compressor
Energy-Efficient PKG AC	2	GPC1424H41	66	34	30	15	20	Rotary	GPCH32441	66	34	30	14.4	20	Rotary
Energy-Efficient PKG AC	2.5	GPC1430H41	66	34	30	22	35	Scroll	GPCH33041	66	34	30	21.6	35	Scroll
Energy-Efficient PKG AC	3	GPC1436H41	66	34	30	26.3	40	Scroll	GPCH33641	66	34	30	24.4	35	Scroll
Energy-Efficient PKG AC	3.5	GPC1442H41	66	34	30	28	45	Scroll	GPCH34241	66	34	35	29.2	45	Scroll
Energy-Efficient PKG AC	4	GPC1448H41	66	34	35	32	50	Scroll	GPCH34841	66	34	35	31.7	50	Scroll
Energy-Efficient PKG AC	5	GPC1460H41	66	34	35	40	60	Scroll	GPCH36041	66	34	35	35.4	50	Scroll

Energy-Efficient PKG HP	2	GPH1424H41	66	34	30	21	30	Scroll	GPHH32441	66	34	30	20.8	30	Scroll
Energy-Efficient PKG HP	2.5	GPH1430H41	66	34	30	23	35	Scroll	GPHH33041	66	34	30	22.4	35	Scroll
Energy-Efficient PKG HP	3	GPH1436H41	66	34	35	26.3	40	Scroll	GPHH33641	66	34	35	26	40	Scroll
Energy-Efficient PKG HP	3.5	GPH1442H41	66	34	35	28	45	Scroll	GPHH34241	66	34	35	26.1	40	Scroll
Energy-Efficient PKG HP	4	GPH1448H41	66	34	35	32	50	Scroll	GPHH34841	66	34	35	31.7	50	Scroll
Energy-Efficient PKG HP	5	GPH1460H41	66	34	38½	40	60	Scroll	GPHH36041	66	34	38½	39.8	60	Scroll

High-Efficiency PKG HP	2	GPH1624H41	66	34	30	21	30	Scroll	GPHH52441	66	34	30	21.3	30	Scroll
High-Efficiency PKG HP	2.5	GPH1630H41	66	34	30	23	35	Scroll	GPHH53041	66	34	30	22.9	35	Scroll
High-Efficiency PKG HP	3	GPH1636H41	66	34	35	25	40	Scroll	GPHH53641	66	34	35	23.2	35	Scroll
High-Efficiency PKG HP	3.5	GPH1642H41	66	34	35	28	45	2-Stg Scroll	GPHH54241	66	34	35	30.6	50	2-Stg Scroll
High-Efficiency PKG HP	4	GPH1648H41	66	34	35	35	50	2-Stg Scroll	GPHH54841	66	34	35	34.7	50	2-Stg Scroll
High-Efficiency PKG HP	5	GPH1660H41	66	34	38½	40	60	2-Stg Scroll	GPHH56041	66	34	38½	40.2	60	2-Stg Scroll

Description	Tonnage	Legacy	W	D	H	MCA	MOP	Compressor	2023 Models	W	D	H	MCA	MOP	Compressor
Energy-Efficient PKG GE	2	GPG1424040M41	47	51	34¾	14.4	20	Rotary	GPGM32404041	47	51	34¾	21.6	35	Rotary
Energy-Efficient PKG GE	2	GPG1424060M41	47	51	34¾	14.4	20	Rotary	GPGM32406041	47	51	34¾	21.6	35	Rotary
Energy-Efficient PKG GE	2.5	GPG1430040M41	47	51	34¾	22.8	35	Scroll	GPGM33004041	47	51	34¾	22.8	35	Scroll
Energy-Efficient PKG GE	2.5	GPG1430060M41	47	51	34¾	22.8	35	Scroll	GPGM33006041	47	51	34¾	22.8	35	Scroll
Energy-Efficient PKG GE	3	GPG1436040M41	47	51	34¾	22.8	35	Scroll	GPGM33604041	47	51	34¾	22.8	35	Scroll
Energy-Efficient PKG GE	3	GPG1436060M41	47	51	34¾	22.8	35	Scroll	GPGM33606041	47	51	34¾	22.8	35	Scroll
Energy-Efficient PKG GE	3	GPG1436080M41	47	51	34¾	22.8	35	Scroll	GPGM33608041	47	51	34¾	22.8	35	Scroll
Energy-Efficient PKG GE	3.5	GPG1442060M41	47	51	42¾	29.2	45	Scroll	GPGM34206041	47	51	42¾	29.2	45	Scroll
Energy-Efficient PKG GE	3.5	GPG1442080M41	47	51	42¾	29.2	45	Scroll	GPGM34208041	47	51	42¾	29.2	45	Scroll
Energy-Efficient PKG GE	4	GPG1448060M41	47	51	42¾	30.5	45	Scroll	GPGM34806041	47	51	42¾	32.3	50	Scroll
Energy-Efficient PKG GE	4	GPG1448080M41	47	51	42¾	30.5	45	Scroll	GPGM34808041	47	51	42¾	32.3	50	Scroll
Energy-Efficient PKG GE	4	GPG1448100M41	47	51	42¾	30.5	45	Scroll	GPGM34810041	47	51	42¾	32.3	50	Scroll
Energy-Efficient PKG GE	5	GPG1461080M41	47	51	42¾	37.6	60	2-Stg Scroll	GPGM36108041	47	51	42¾	41	60	2-Stg Scroll
Energy-Efficient PKG GE	5	GPG1461100M41	47	51	42¾	37.6	60	2-Stg Scroll	GPGM36110041	47	51	42¾	41	60	2-Stg Scroll
Energy-Efficient PKG GE	5	GPG1461120M41	47	51	42¾	37.6	60	2-Stg Scroll	GPGM36112041	47	51	42¾	41	60	2-Stg Scroll

Energy-Efficient PKG ULN	2	GPU1424040M41	47	51	34¾	14.4	20	Rotary	GPUM32404041	47	51	34¾	21.6	35	Rotary
Energy-Efficient PKG ULN	2.5	GPU1430060M41	47	51	34¾	22.8	35	Scroll	GPUM33006041	47	51	34¾	22.8	35	Scroll
Energy-Efficient PKG ULN	3	GPU1436060M41	47	51	34¾	22.8	35	Scroll	GPUM33606041	47	51	34¾	22.8	35	Scroll
Energy-Efficient PKG ULN	3.5	GPU1442080M41	47	51	42¾	29.2	45	Scroll	GPUM34208041	47	51	42¾	29.2	45	Scroll
Energy-Efficient PKG ULN	4	GPU1448080M41	47	51	42¾	30.5	45	Scroll	GPUM34808041	47	51	42¾	32.3	50	Scroll
Energy-Efficient PKG ULN	5	GPU1461080M41	47	51	42¾	37.6	60	Scroll	GPUM36108041	47	51	42¾	41	60	Scroll

High-Efficiency PKG GE	2	GPG1624060M41	47	51	34¾	19.5	30	2-Stg Scroll	GPGM52406041	47	51	34¾	18.4	25	2-Stg Scroll
High-Efficiency PKG GE	2.5	GPG1630080M41	47	51	34¾	21.7	30	2-Stg Scroll	GPGM53008041	47	51	34¾	22	35	2-Stg Scroll
High-Efficiency PKG GE	3	GPG1636080M41	47	51	42¾	24.6	40	2-Stg Scroll	GPGM53608041	47	51	42¾	25.8	35	2-Stg Scroll
High-Efficiency PKG GE	3.5	GPG1642100M41	47	51	42¾	29.2	45	2-Stg Scroll	GPGM54210041	47	51	42¾	33.1	50	2-Stg Scroll
High-Efficiency PKG GE	4	GPG1648100M41	47	51	42¾	33.3	50	2-Stg Scroll	GPGM54810041	47	51	42¾	33.7	50	2-Stg Scroll
High-Efficiency PKG GE	5	GPG1660140M41	73⅜	47⅞	43½	43.4	70	2-Stg Scroll	GPGM56014041	73⅜	47⅞	43½	43.3	70	2-Stg Scroll

Description	Tonnage	Legacy	W	D	H	MCA	MOP	Compressor	2023 Models	W	D	H	MCA	MOP	Compressor
Energy-Efficient PKG DF	2	GPD1424060M41	47	51	34¾	21.2	30	Scroll	GPDM32406041	47	51	34¾	20.8	30	Scroll
Energy-Efficient PKG DF	2.5	GPD1430080M41	47	51	34¾	21	35	Scroll	GPDM33008041	47	51	34¾	22.7	35	Scroll
Energy-Efficient PKG DF	3	GPD1436080M41	47	51	34¾	24.2	40	Scroll	GPDM33608041	47	51	34¾	25.1	40	Scroll
Energy-Efficient PKG DF	3.5	GPD1442100M41	47	51	42¾	26.7	40	Scroll	GPDM34210041	47	51	42¾	29.2	45	Scroll
Energy-Efficient PKG DF	4	GPD1448100M41	47	51	42¾	29.1	45	Scroll	GPDM34810041	47	51	42¾	31.7	50	Scroll

Energy-Efficient PKG AC	2	GPC14M2441	47	51	34¾	14.6	20	Rotary	GPCM32441	47	51	34¾	21.6	35	Scroll
Energy-Efficient PKG AC	2.5	GPC14M3041	47	51	34¾	19.6	23.1	Scroll	GPCM33041	47	51	34¾	23	35	Scroll
Energy-Efficient PKG AC	3	GPC14M3641	47	51	34¾	21.1	30	Rotary	GPCM33641	47	51	34¾	26.1	40	Scroll
Energy-Efficient PKG AC	3.5	GPC14M4241	47	51	34¾	27.7	45	Scroll	GPCM34241	47	51	42¾	27.7	40	Scroll
Energy-Efficient PKG AC	4	GPC14M4841	47	51	42¾	32	50	Scroll	GPCM34841	47	51	42¾	31.7	50	Scroll
Energy-Efficient PKG AC	5	GPC14M6041	47	51	42¾	40.3	60	Scroll	GPCM36041	47	51	42¾	41	60	Scroll

Energy-Efficient PKG HP	2	GPH14M2441	47	51	34¾	21.9	30	Scroll	GPHM32441	47	51	34¾	21.4	30	Scroll
Energy-Efficient PKG HP	2.5	GPH14M3041	47	51	34¾	23.5	35	Scroll	GPHM33041	47	51	34¾	23	35	Scroll
Energy-Efficient PKG HP	3	GPH14M3641	47	51	34¾	26.6	40	Scroll	GPHM33641	47	51	34¾	24.4	35	Scroll
Energy-Efficient PKG HP	3.5	GPH14M4241	47	51	34¾	29.6	45	Scroll	GPHM34241	47	51	42¾	29.2	45	Scroll
Energy-Efficient PKG HP	4	GPH14M4841	47	51	42¾	34.5	50	Scroll	GPHM34841	47	51	42¾	31.9	50	Scroll
Energy-Efficient PKG HP	5	GPH14M6041	47	51	42¾	44	70	2-Stg Scroll	GPHM36041	47	51	42¾	37.5	60	2-Stg Scroll

High-Efficiency PKG HP	2	GPH16M2441	47	51	34¾	20.4	30	2-Stg Scroll	GPHM52441	47	51	34¾	19.2	30	2-Stg Scroll
High-Efficiency PKG HP	2.5	GPH16M3041	47	51	34¾	22.2	35	2-Stg Scroll	GPHM53041	47	51	34¾	22	35	2-Stg Scroll
High-Efficiency PKG HP	3	GPH16M3641	47	51	34¾	25.1	40	2-Stg Scroll	GPHM53641	47	51	42¾	23.3	35	2-Stg Scroll
High-Efficiency PKG HP	3.5	GPH16M4241	47	51	42¾	29.6	45	2-Stg Scroll	GPHM54241	47	51	42¾	33.1	50	2-Stg Scroll
High-Efficiency PKG HP	4	GPH16M4841	47	51	42¾	33.7	50	2-Stg Scroll	GPHM54841	47	51	42¾	34.7	50	2-Stg Scroll
High-Efficiency PKG HP	5	GPH16M6041	73⅜	47⅞	43½	44	70	2-Stg Scroll	GPHM56041	73⅜	47⅞	43½	39	60	2-Stg Scroll



Air Conditioning & Heating

Product Overview

COILS

Description	Tonnage	Legacy SKU	W	D	H	2023 SKU	W	D	H	Piston
NORTH MARKET:										
Verticle	1.5 to 2	CAPEA1818B4	17.5	21	18	CAPEA1818B4	17.5	21	18	EEV
Verticle	1.5 to 2	CAPEA1818C4	21	21	18	CAPEA1818C4	21	21	18	EEV
Verticle	2 to 2.5	CAPEA2422B4	17.5	21	22	CAPEA2422B4	17.5	21	22	EEV
Verticle	2 to 2.5	CAPEA2422C4	21	21	22	CAPEA2422C4	21	21	22	EEV
Verticle	3	CAPEA3026B4	17.5	21	26	CAPEA3026B4	17.5	21	26	EEV
Verticle	3	CAPEA3026C4	21	21	26	CAPEA3026C4	21	21	26	EEV
Verticle	3	CAPEA3026D4	24.5	21	26	CAPEA3026D4	24.5	21	26	EEV
Verticle	3.5 to 4	CAPEA4860C4	21	21	30	CAPEA4830C4	21	21	30	EEV
Verticle	3.5 to 4	CAPEA4860D4	24.5	21	30	CAPEA4860D4	24.5	21	30	EEV
Verticle	4 to 5	CAPEA4961C4	21	21	30	CAPEA4961C4	21	21	30	EEV
Verticle	4 to 5	CAPEA4961D4	24.5	21	30	CAPEA6030D4	24.5	21	30	EEV
Vertical	1.5	CAPFA1714A6	14	21	14	CAPFA1818A6	14	21	18	0.055
Vertical	1.5	CAPFA1714B6	17½	21	14	CAPFA1818B6	17½	21	18	0.055
Vertical	1.5	N/A	N/A	N/A	N/A	CAPFA1818C6	21	21	18	0.055
Vertical	2	CAPFA2318A6	14	21	18	CAPFA2418A6	14	21	18	0.057
Vertical	2	CAPFA2318B6	17½	21	18	CAPFA2418B6	17½	21	18	0.057
Vertical	2	CAPFA2318C6	21	21	18	CAPFA2418C6	21	21	18	0.057
Vertical	2	N/A	N/A	N/A	N/A	CAPFA2422A6	14	21	22	0.059
Vertical	2	N/A	N/A	N/A	N/A	CAPFA2422B6	17½	21	22	0.059
Vertical	2	N/A	N/A	N/A	N/A	CAPFA2422C6	21	21	22	0.059
Vertical	2.5	CAPFA2922A6	14	21	22	CAPFA3022A6	14	21	22	0.063
Vertical	2.5	CAPFA2922B6	17½	21	22	CAPFA3022B6	17½	21	22	0.063
Vertical	2.5	CAPFA2922C6	21	21	22	CAPFA3022C6	21	21	22	0.063
Vertical	2.5	N/A	N/A	N/A	N/A	CAPFA3022D6	24½	21	22	0.063



Air Conditioning & Heating

Product Overview

COILS

Description	Tonnage	Legacy SKU	W	D	H	2023 SKU	W	D	H	Piston
Vertical	3	CAPFA3526B6	17½	21	26	CAPFA3626B6	17½	21	26	0.065
Vertical	3	CAPFA3526C6	21	21	26	CAPFA3626C6	21	21	26	0.065
Vertical	3	N/A	N/A	N/A	N/A	CAPFA3626D6	24½	21	26	0.065
Vertical	3.5	CAPFA4226B6	17½	21	26	CAPFA4226B6	17½	21	26	0.071
Vertical	3.5	CAPFA4226C6	21	21	26	CAPFA4226C6	21	21	26	0.071
Vertical	3.5	CAPFA4226D6	24½	21	26	CAPFA4226D6	24½	21	26	0.071
Vertical	4 to 5	CAPF4961C6	21	21	30	CAPF4961C6	21	21	30	0.093
Vertical	4 to 5	CAPF4961D6	24½	21	30	CAPF4961D6	24½	21	30	0.093
Horizontal	1.5	CHPF1824A6	21⅞	26	14	CHPTA1822A4	21	22	14	YES
Horizontal	1.5	N/A	N/A	N/A	N/A	CHPTA1822B4	21	22	17½	YES
Horizontal	1.5	CHPF2430B6	21⅞	26	17½	CHPTA2426B4	21	26	17½	YES
Horizontal	2	CHPF2430B6	21⅞	26	17½	CHPTA2426C4	21	26	21	YES
Horizontal	2	CHPF3636B6	21⅞	26	17½	CHPTA3026B4	21	26	17½	YES
Horizontal	2.5	CHPF3636B6	21⅞	26	17½	CHPTA3026C4	21	26	21	YES
Horizontal	2.5	CHPF3636B6	21⅞	26	17½	CHPTA3630B4	21	30	17½	YES
Horizontal	2.5	CHPF3642C6	21⅞	26	21	CHPTA3630C4	21	30	21	YES
Horizontal	3	CHPF3642C6	21⅞	26	21	CHPTA3630C4	21	30	21	YES
Horizontal	3.5	CHPF3642C6	21⅞	26	21	CHPT4860D4	21⅞	26	24½	YES
Horizontal	3.5	CHPF3743C6	21⅞	26	21	CHPT4860D4	21⅞	26	24½	YES
Horizontal	4 to 5	CHPF4860D6	21⅞	26	24½	CHPT4860D4	21⅞	26	24½	YES

Description	Tonnage	Legacy SKU	W	D	H	2023 SKU	W	D	H	TXV
SOUTH MARKET:										
Verticle	3.5 to 4	CAPE4860C4	21	21	30	CAPEA4830C4	21	21	30	EEV
Verticle	3.5 to 4	CAPE4860D4	24.5	21	30	CAPE4860D4	24.5	21	30	EEV
Verticle	4 to 5	CAPE4961C4	21	21	30	CAPE4961C4	21	21	30	EEV
Verticle	4 to 5	CAPE4961D4	24.5	21	30	CAPEA6030D4	24.5	21	30	EEV
Vertical	1.5	CAPFA1818A6	14	21	18	CAPTA1818A4	14	21	18	YES
Vertical	1.5	CAPFA1818B6	17½	21	18	CAPTA1818B4	17½	21	18	YES
Vertical	1.5	CAPFA1818C6	21	21	18	N/A	N/A	21	N/A	N/A
Vertical	2	CAPFA2418A6	14	21	18	CAPTA2422A4	14	21	22	N/A
Vertical	2	CAPFA2418B6	17½	21	18	CAPTA2422B4	17½	21	22	N/A
Vertical	2	CAPFA2418C6	21	21	18	CAPTA2422C4	21	21	22	N/A
Vertical	2	CAPFA2422A6	14	21	22	CAPTA2422A4	14	21	22	YES
Vertical	2	CAPFA2422B6	17½	21	22	CAPTA2422B4	17½	21	22	YES
Vertical	2	CAPFA2422C6	21	21	22	CAPTA2422C4	21	21	22	YES
Vertical	2.5	CAPFA3022A6	14	21	22	CAPTA3022A4	14	21	22	YES
Vertical	2.5	CAPFA3022B6	17½	21	22	CAPTA3022B4	17½	21	22	YES
Vertical	2.5	CAPFA3022C6	21	21	22	CAPTA3022C4	21	21	22	YES
Vertical	2.5	CAPFA3022D6	24½	21	22	CAPTA3026B4	17½	21	26	YES
Vertical	2.5	N/A	N/A	21	N/A	CAPTA3026C4	21	21	26	YES
Vertical	3	CAPFA3626B6	17½	21	26	CAPTA3626B4	17½	21	26	YES
Vertical	3	CAPFA3626C6	21	21	26	CAPTA3626C4	21	21	26	YES
Vertical	3	CAPFA3626D6	24½	21	26	N/A	N/A	21	N/A	N/A
Vertical	3.5	CAPFA4226B6	17½	21	26	N/A	N/A	21	N/A	N/A

Description	Tonnage	Legacy SKU	W	D	H	2023 SKU	W	D	H	TXV
Vertical	3.5	CAPFA4226C6	21	21	26	CAPTA4230C4	21	21	30	YES
Vertical	3.5	CAPFA4226D6	24½	21	26	CAPTA4230D4	24½	21	30	YES
Vertical	4 to 5	CAPF4961C6	21	21	30	CAPT4961C4	21	21	30	YES
Vertical	4 to 5	CAPF4961D6	24½	21	30	CAPT4961D4	24½	21	30	YES
Horizontal	1.5 to 2	CHPF3636B6	21⅞	26	17½	CHPTA3026B4	21	26	17½	YES
Horizontal	2.5	CHPF3636B6	21⅞	26	17½	CHPTA3630B4	21	30	17½	YES
Horizontal	2.5	CHPF3642C6	21⅞	26	21	CHPTA3026C4	21	26	21	YES
Horizontal	3	CHPF3642C6	21⅞	26	21	CHPTA3630C4	21	30	21	YES
Horizontal	3.5	CHPF4860D6	21⅞	26	24½	CHPT4860D4	21⅞	26	24½	YES
Horizontal	4 to 5	CHPF4860D6	21⅞	26	24½	CHPT4860D4	21⅞	26	24½	YES



Air Conditioning & Heating

Product Overview

AIR HANDLERS

Description	Legacy	W	D	H	MCA	MOP	2023 Models	W	D	H	MCA	MOP
Wall Mount, Multi-Speed, MF AH	AWUF180316	20 ³ / ₁₆	16 ¹ / ₈	36	15.2/17	20/20	AWST18SU1403	20 ³ / ₁₆	16 ¹ / ₈	36	17/18.9	20/20
Wall Mount, Multi-Speed, MF AH	AWUF180516	20 ³ / ₁₆	16 ¹ / ₈	36	23/26.6	25/30	AWST18SU1405	20 ³ / ₁₆	16 ¹ / ₈	36	24.9/28	25/30
Wall Mount, Multi-Speed, MF AH	AWUF180816	20 ³ / ₁₆	16 ¹ / ₈	36	35/39.6	35/40	AWST18SU1408	20 ³ / ₁₆	16 ¹ / ₈	36	36/41.3	40/45
Wall Mount, Multi-Speed, MF AH	AWUF190316	20 ³ / ₁₆	16 ¹ / ₈	36	17/18.9	20/20	AWST18SU1403	20 ³ / ₁₆	16 ¹ / ₈	36	17/18.9	20/20
Wall Mount, Multi-Speed, MF AH	AWUF190516	20 ³ / ₁₆	16 ¹ / ₈	36	24.9/28	25/30	AWST18SU1405	20 ³ / ₁₆	16 ¹ / ₈	36	24.9/28	25/30
Wall Mount, Multi-Speed, MF AH	AWUF190816	20 ³ / ₁₆	16 ¹ / ₈	36	36/41.3	40/45	AWST18SU1408	20 ³ / ₁₆	16 ¹ / ₈	36	36/41.3	40/45
Wall Mount, Multi-Speed, MF AH	AWUF240516	20 ³ / ₁₆	16 ¹ / ₈	36	23/26.6	25/30	AWST24SU1405	20 ³ / ₁₆	16 ¹ / ₈	36	24.9/28	25/30
Wall Mount, Multi-Speed, MF AH	AWUF240816	20 ³ / ₁₆	16 ¹ / ₈	36	35/39.6	35/40	AWST24SU1408	20 ³ / ₁₆	16 ¹ / ₈	36	36/41.3	40/45
Wall Mount, Multi-Speed, MF AH	AWUF241016	20 ³ / ₁₆	16 ¹ / ₈	36	46/52.7	50/60	AWST24SU1410	20 ³ / ₁₆	16 ¹ / ₈	36	47.5/54	50/60
Wall Mount, Multi-Speed, MF AH	AWUF250316	20 ³ / ₁₆	16 ¹ / ₈	36	17/18.9	20/20	N/A	N/A	N/A	N/A	N/A	N/A
Wall Mount, Multi-Speed, MF AH	AWUF250516	20 ³ / ₁₆	16 ¹ / ₈	36	24.9/28	25/30	AWST24SU1405	20 ³ / ₁₆	16 ¹ / ₈	36	24.9/28	25/30
Wall Mount, Multi-Speed, MF AH	AWUF250816	20 ³ / ₁₆	16 ¹ / ₈	36	36/41.3	40/45	AWST24SU1408	20 ³ / ₁₆	16 ¹ / ₈	36	36/41.3	40/45
Wall Mount, Multi-Speed, MF AH	AWUF251016	20 ³ / ₁₆	16 ¹ / ₈	36	47.5/54	50/60	AWST24SU1410	20 ³ / ₁₆	16 ¹ / ₈	36	47.5/54	50/60
Wall Mount, Multi-Speed, MF AH	AWUF300516	24	21	36	23.6/27	25/30	AWST30LU1405	24	21	36	26/29.8	30/30
Wall Mount, Multi-Speed, MF AH	AWUF300816	24	21	36	34.9/40	35/40	AWST30LU1408	24	21	36	37.8/43	40/45
Wall Mount, Multi-Speed, MF AH	AWUF301016	24	21	36	46.2/53	50/60	AWST30LU1410	24	21	36	49/55.8	50/60
Wall Mount, Multi-Speed, MF AH	AWUF310516	24	21	36	26.8/30.1	30/35	AWST30LU1405	24	21	36	26/29.8	30/30
Wall Mount, Multi-Speed, MF AH	AWUF310816	24	21	36	38.1/43.1	40/45	AWST30LU1408	24	21	36	37.8/43	40/45
Wall Mount, Multi-Speed, MF AH	AWUF321016	24	21	36	49.4/56	50/60	AWST30LU1410	24	21	36	49/55.8	50/60
Wall Mount, Multi-Speed, MF AH	AWUF360516	24	21	36	23.6/27	25/30	AWST36LU1405	24	21	36	26/29.8	30/30
Wall Mount, Multi-Speed, MF AH	AWUF360816	24	21	36	34.9/40	35/40	AWST36LU1408	24	21	36	37.8/43	40/45
Wall Mount, Multi-Speed, MF AH	AWUF361016	24	21	36	46.2/53	50/60	AWST36LU1410	24	21	36	49/55.8	50/60
Wall Mount, Multi-Speed, MF AH	AWUF370516	24	21	36	27/29.9	30/30	AWST36LU1405	24	21	36	26/29.8	30/30
Wall Mount, Multi-Speed, MF AH	AWUF370816	24	21	36	37.8/43	40/45	AWST36LU1408	24	21	36	37.8/43	40/45
Wall Mount, Multi-Speed, MF AH	AWUF371016	24	21	36	49.1/56	50/60	AWST36LU1410	24	21	36	49/55.8	50/60

AC = Air Conditioners / HP = Heat Pump / GE = Gas Electric / DF = Dual Fuel
AH - Air Handler / MF - Multi-family / PKG - Packaged Unit

continued on next page >

Goodman Product Overview / Updated Summer 2023

Description	Legacy	W	D	H	MCA	MOP	2023 Models	W	D	H	MCA	MOP
Wall Mount, Multi-Speed, MF AH	N/A	N/A	N/A	N/A	N/A	N/A	AWST18SU1403	20 ³ / ₁₆	16 ¹ / ₈	36	17/18.9	20/20
Wall Mount, Multi-Speed, MF AH	N/A	N/A	N/A	N/A	N/A	N/A	AWST18SU1405	20 ³ / ₁₆	16 ¹ / ₈	36	24.9/28	25/30
Wall Mount, Multi-Speed, MF AH	N/A	N/A	N/A	N/A	N/A	N/A	AWST18SU1408	20 ³ / ₁₆	16 ¹ / ₈	36	36/41.3	40/45
Wall Mount, Multi-Speed, MF AH	AWUT240514	20 ³ / ₁₆	16 ¹ / ₈	36	23/26.6	25/30	AWST24SU1405	20 ³ / ₁₆	16 ¹ / ₈	36	24.9/28	25/30
Wall Mount, Multi-Speed, MF AH	AWUT240814	20 ³ / ₁₆	16 ¹ / ₈	36	35/39.6	35/40	AWST24SU1408	20 ³ / ₁₆	16 ¹ / ₈	36	36/41.3	40/45
Wall Mount, Multi-Speed, MF AH	AWUT241014	20 ³ / ₁₆	16 ¹ / ₈	36	46/52.7	50/60	AWST24SU1410	20 ³ / ₁₆	16 ¹ / ₈	36	47.5/54	50/60
Wall Mount, Multi-Speed, MF AH	AWUT310516	24	21	36	27/30.1	30/35	AWST30LU1405	24	21	36	26/29.8	30/30
Wall Mount, Multi-Speed, MF AH	AWUT310816	24	21	36	38.1/43	40/45	AWST30LU1408	24	21	36	37.8/43	40/45
Wall Mount, Multi-Speed, MF AH	AWUT321016	24	21	36	49.4/56	50/60	AWST30LU1410	24	21	36	49/55.8	50/60
Wall Mount, Multi-Speed, MF AH	AWUT370516	24	21	36	27/29.9	30/30	AWST36LU1405	24	21	36	26/29.8	30/30
Wall Mount, Multi-Speed, MF AH	AWUT370816	24	21	36	37.9/43	40/45	AWST36LU1408	24	21	36	37.8/43	40/45
Wall Mount, Multi-Speed, MF AH	AWUT371016	24	21	36	49.1/56	50/60	AWST36LU1410	24	21	36	49/55.8	50/60

Ceiling Mount, Multi-Speed, MF AH	ACNF180016	37 ¹ / ₄	21	10	0.8/0.8	15/15	NO 2023 MODEL WITHOUT FACTORY INSTALLED HEATER KIT					
Ceiling Mount, Multi-Speed, MF AH	ACNF180516	37 ¹ / ₄	21	10	24.5/27	25/30	ACSF18MN1605AA	37 ¹ / ₄	21	10	25/28.5	30/30
Ceiling Mount, Multi-Speed, MF AH	ACNF180816	37 ¹ / ₄	21	10	37/40.5	40/45	ACSF18MN1608AA	37 ¹ / ₄	21	10	38.6/44	40/45
Ceiling Mount, Multi-Speed, MF AH	ACNF240016	43 ³ / ₄	21	10	1.6/1.6	15/15	N/A	N/A	N/A	N/A	N/A	N/A
Ceiling Mount, Multi-Speed, MF AH	ACNF240516	43 ³ / ₄	21	10	25.3/28	30/30	N/A	N/A	N/A	N/A	N/A	N/A
Ceiling Mount, Multi-Speed, MF AH	ACNF240616	43 ³ / ₄	21	10	31/34.2	35/35	N/A	N/A	N/A	N/A	N/A	N/A
Ceiling Mount, Multi-Speed, MF AH	ACNF240816	43 ³ / ₄	21	10	37.6/41	40/45	N/A	N/A	N/A	N/A	N/A	N/A
Ceiling Mount, Multi-Speed, MF AH	ACNF250016	43 ³ / ₄	21	10	2.5/2.5	15/15	NO 2023 MODEL WITHOUT FACTORY INSTALLED HEATER KIT					
Ceiling Mount, Multi-Speed, MF AH	ACNF250516	43 ³ / ₄	21	10	26/28.6	30/30	ACSF24LN1605AA	43 ³ / ₄	21	10	25/28.5	30/30
Ceiling Mount, Multi-Speed, MF AH	ACNF250616	43 ³ / ₄	21	10	32/35.1	35/40	ACSF24LN1606AA	43 ³ / ₄	21	10	29.6/34	30/35
Ceiling Mount, Multi-Speed, MF AH	ACNF250816	43 ³ / ₄	21	10	38.4/42	40/45	ACSF24LN1608AA	43 ³ / ₄	21	10	38.6/44	40/45
Ceiling Mount, Multi-Speed, MF AH	ACNF251016	43 ³ / ₄	21	10	50.7/56	60/60	ACSF24LN1610AA	43 ³ / ₄	21	10	48/54.6	50/60
Ceiling Mount, Multi-Speed, MF AH	ACNF300516	49 ¹ / ₄	21	10	25.3/28	30/30	N/A	N/A	N/A	N/A	N/A	N/A
Ceiling Mount, Multi-Speed, MF AH	ACNF300816	49 ¹ / ₄	21	10	37.6/41	40/45	N/A	N/A	N/A	N/A	N/A	N/A
Ceiling Mount, Multi-Speed, MF AH	ACNF301016	49 ¹ / ₄	21	10	49.8/55	50/60	N/A	N/A	N/A	N/A	N/A	N/A
Ceiling Mount, Multi-Speed, MF AH	ACNF310016	49 ¹ / ₄	21	10	2.5/2.5	15/15	NO 2023 MODEL WITHOUT FACTORY INSTALLED HEATER KIT					
Ceiling Mount, Multi-Speed, MF AH	ACNF310516	49 ¹ / ₄	21	10	26/28.6	30/30	ACSF30LN1605AA	49 ¹ / ₄	21	10	25/28.5	30/30
Ceiling Mount, Multi-Speed, MF AH	ACNF310616	49 ¹ / ₄	21	10	32/35.1	35/40	ACSF30LN1606AA	49 ¹ / ₄	21	10	29.6/34	30/35
Ceiling Mount, Multi-Speed, MF AH	ACNF310816	49 ¹ / ₄	21	21	38.4/42	40/45	ACSF30LN1608AA	49 ¹ / ₄	21	10	38.6/44	40/45
Ceiling Mount, Multi-Speed, MF AH	ACNF311016	49 ¹ / ₄	21	21	50.7/56	60/60	ACSF30LN1610AA	49 ¹ / ₄	21	10	48/54.6	50/60

Description	Legacy	W	D	H	MCA	MOP	2023 Models	W	D	H	MCA	MOP
Multi-Position, Multi-Speed AH	ARUF25B14	17½	21	45	2.4/2.4	15/15	AMST24BU14	17¾ ₁₆	21	45	5.8/5.8	15/15
Multi-Position, Multi-Speed AH	ARUF29B14	17½	21	45	2.4/2.4	15/15	AMST30BU14	17¾ ₁₆	21	53¾ ₁₆	5.6/5.6	15/15
Multi-Position, Multi-Speed AH	ARUF31B14	17½	21	53¾ ₁₆	2.4/2.4	15/15	AMST30BU14	17¾ ₁₆	21	53¾ ₁₆	5.6/5.6	15/15
Multi-Position, Multi-Speed AH	ARUF37C14	21	21	53¾ ₁₆	4/4	15/15	AMST36BU14	17¾ ₁₆	21	53¾ ₁₆	5.6/5.6	15/15
Multi-Position, Multi-Speed AH	ARUF37C14	21	21	53¾ ₁₆	3.6/3.6	15/15	AMST36CU14	21⅞	21	49	7.1/7.1	15/15
Multi-Position, Multi-Speed AH	ARUF37D14	24½	21	53¾ ₁₆	4/4	15/15	AMST36CU14	21⅞	21	49	7.1/7.1	15/15
Multi-Position, Multi-Speed AH	ARUF43C14	24½	21	53¾ ₁₆	4/4	15/15	AMST42CU14	21⅞	21	53¾ ₁₆	5.9/5.9	15/15
Multi-Position, Multi-Speed AH	ARUF43D14	24½	21	58	4/4	15/15	AMST42CU14	21⅞	21	53¾ ₁₆	5.9/5.9	15/15
Multi-Position, Multi-Speed AH	ARUF47D14	21	21	53¾ ₁₆	4/4	15/15	AMST42CU14	21⅞	21	53¾ ₁₆	5.9/5.9	15/15
Multi-Position, Multi-Speed AH	ARUF49C14	21	21	53¾ ₁₆	4/4	15/15	AMST48CU14	21⅞	21	58	7.1/7.1	15/15
Multi-Position, Multi-Speed AH	ARUF49D14	24½	21	53¾ ₁₆	4/4	15/15	AMST48DU14	24⅝	21	53¾ ₁₆	8.6/8.6	15/15
Multi-Position, Multi-Speed AH	ARUF61D14	24½	21	58	6/6	15/15	AMST60DU14	24⅝	21	58	8.6/8.6	15/15

Multi-Position, Multi-Speed AH	ASPT25B14	17½	21	45	5.8/5.8	15/15	AMST24BU14	17¾ ₁₆	21	45	5.8/5.8	15/15
Multi-Position, Multi-Speed AH	ASPT29B14	17½	21	53½	5.8/5.8	15/15	AMST24BU14	17¾ ₁₆	21	45	5.8/5.8	15/15
Multi-Position, Multi-Speed AH	ASPT33C14	21	21	49	4.9/4.9	15/15	AMST24BU14	17¾ ₁₆	21	45	5.8/5.8	15/15
Multi-Position, Multi-Speed AH	ASPT35B14	17½	21	45	5.6/5.6	15/15	AMST30BU14	17¾ ₁₆	21	53¾ ₁₆	5.6/5.6	15/15
Multi-Position, Multi-Speed AH	ASPT37B14	17½	21	53½	5.6/5.6	15/15	AMST36BU14	17¾ ₁₆	21	53¾ ₁₆	5.6/5.6	15/15
Multi-Position, Multi-Speed AH	ASPT37C14	21	21	53½	5.6/5.6	15/15	AMST36CU14	21⅞	21	49	7.1/7.1	15/15
Multi-Position, Multi-Speed AH	ASPT39C14	21	21	49	4.9/4.9	15/15	AMST42CU14	21⅞	21	53¾ ₁₆	5.9/5.9	15/15
Multi-Position, Multi-Speed AH	ASPT47C14	21	21	53½	4.9/4.9	15/15	AMST42CU14	21⅞	21	53¾ ₁₆	5.9/5.9	15/15
Multi-Position, Multi-Speed AH	ASPT47D14	24½	21	53½	5.6/5.6	15/15	AMST42CU14	21⅞	21	53¾ ₁₆	5.9/5.9	15/15
Multi-Position, Multi-Speed AH	ASPT49C14	21	21	49	7.1/7.1	15/15	AMST48CU14	21⅞	21	58	7.1/7.1	15/15
Multi-Position, Multi-Speed AH	ASPT49D14	24½	21	58	8.6/8.6	15/15	AMST48DU14	24⅝	21	53¾ ₁₆	8.6/8.6	15/15
Multi-Position, Multi-Speed AH	ASPT59C14	21	21	53½	7.9/7.9	15/15	AMST60DU14	24⅝	21	58	8.6/8.6	15/15
Multi-Position, Multi-Speed AH	ASPT61D14	24½	21	58	8.6 / 8.6	15/15	AMST60DU14	24⅝	21	58	8.6/8.6	15/15

Description	Legacy	W	D	H	MCA	MOP	2023 Models	W	D	H	MCA	MOP
Multi-Position, Variable-Speed AH w/ TXV	AVPTC25B14	17½	21	45	4.9/4.6	15/15	AMVT24BP1400	17½	21	45	4.9/4.9	15/15
Multi-Position, Variable-Speed AH w/ TXV	AVPTC29B14	17½	21	53⅞	6.5/6.5	15/15	AMVT30BP1400	17½	21	53⅞	4.9/4.9	15/15
Multi-Position, Variable-Speed AH w/ TXV	AVPTC37B14	17½	21	53⅞	6.5/6.5	15/15	AMVT36BP1400	17½	21	53⅞	6.5/6.5	15/15
Multi-Position, Variable-Speed AH w/ TXV	AVPTC33C14	21	21	49	4.9/4.6	15/15	AMVT36CP1400	21	21	49	6.5/6.5	15/15
Multi-Position, Variable-Speed AH w/ TXV	AVPTC37C14	21	21	53⅞	4.9/4.6	15/15	AMVT42CP1400	21	21	53⅞	6.5/6.5	15/15
Multi-Position, Variable-Speed AH w/ TXV	AVPTC59C14	21	21	53⅞	6.5/6.5	15/15	AMVT48CP1400	21	21	58	6.5/6.5	15/15
Multi-Position, Variable-Speed AH w/ TXV	AVPTC59D14	24½	21	53⅞	6.5/6.5	15/15	AMVT48DP1400	24½	21	53⅞	8.6/8.6	15/15
Multi-Position, Variable-Speed AH w/ TXV	AVPTC61D14	24½	21	58	6.5/6.5	15/15	AMVT60DP1400	24½	21	58	8.6/8.6	15/15

Multi-Position, Variable-Speed AH w/ EEV	AVPEC25B14	17½	21	53⅞	4.9/4.9	15/15	AMVE24BP1400	17½	21	53⅞	4.9/4.9	15/15
Multi-Position, Variable-Speed AH w/ EEV	AVPEC37C14	21	21	53⅞	6.5/6.5	15/15	AMVE36CP1400	21	21	53⅞	6.5/6.5	15/15
Multi-Position, Variable-Speed AH w/ EEV	AVPEC59D14	24½	21	53⅞	8.6/8.6	15/15	AMVE48DP1400	24½	21	53⅞	8.6/8.6	15/15
Multi-Position, Variable-Speed AH w/ EEV	AVPEC61D14	24½	21	58	8.6/8.6	15/15	AMVE60DP1400	24½	21	58	8.6/8.6	15/15

Dimensional data is approximate due to rounding error. Actual dimensions may slightly differ.
 These references are for general use only. Please refer to the AHRI Directory for actual matchups.



A DAIKIN BRAND

Air Conditioning & Heating

Our continuing commitment to quality products may mean a change in specifications without notice.

© 2023 **DAIKIN COMFORT TECHNOLOGIES NORTH AMERICA, INC.** · Houston, Texas · USA · www.goodmanmfg.com

PM-Goodman-2023REF_08-23

RESIDENTIAL PRODUCTS CATALOG 05.23



At Goodman, we believe in American dependability. Units are designed, engineered and assembled in the U.S.A.

Thank goodness for Goodman.®



Air Conditioning & Heating

RESIDENTIAL PRODUCTS CATALOG

Split Systems

7

Air Conditioners

GSXV9	Up to 22.5 SEER2	8
GSXC7	Up to 17.2 SEER2	9
GSXH5	Up to 15.2 SEER2	10
GSXM4	14.3 SEER2	11
GSXB4	14.3 SEER2	12
GSXN4	14.3 SEER2	13
GSXN3	13.4 SEER2	14

Heat Pumps

GSZV9	Up to 22.5 SEER2 Up to 8.2 HSPF2	15
GSZC7	Up to 17.2 SEER2 Up to 8.2 HSPF2	16
GSZH5	Up to 15.2 SEER2 Up to 7.8 HSPF2	17
GSZM4	14.3 SEER2 Up to 7.5 HSPF2	18
GSZB4	14.3 SEER2 Up to 7.5 HSPF2	19

Gas Furnaces

20

90+% AFUE Gas Furnaces

GMVM97 (B)	Up to 97% AFUE	21
GCV97 (B)	97% AFUE	22
GMVC96 (B)	Up to 96% AFUE	23
GVC96 (B)	Up to 96% AFUE	23
GM9C96	Up to 96% AFUE	24
GC9C96	Up to 96% AFUE	25
GM9S96	Up to 96% AFUE	26
GC9S96	Up to 96% AFUE	26
GM9S96-U	Up to 96% AFUE	27
GMVS96-U	Up to 96% AFUE	28
GM9S92	Up to 92% AFUE	29

80% AFUE Gas Furnaces

GMVC80	80% AFUE	30
GVC80	80% AFUE	30
GM9C80	80% AFUE	31
GC9C80	80% AFUE	31
GM9S80	80% AFUE	32
GC9S80	80% AFUE	32
GM9S80-U	80% AFUE	33
GMVS80-U	80% AFUE	34

Air Handlers & Evaporator Coils

35

Air Handlers

AMVE	36
AMVT	37
AMST	38
MBVC	39
AWST	40
AWSF	41
ACSF	42

Evaporator Coils

CAPT	43
CAPF	44
CAPFA	45
CAUF	46
CAUFA	47
CHPF	48
CSCF	49
CHPT	50
CHPTA	51

Packaged Units

52

Air Conditioners

GPCH3	13.4 SEER2	53
GPCM3	13.4 SEER2	54

Heat Pumps

GPHH5	Up to 15.2 SEER2 6.7 HSPF2	55
GPHM5	Up to 15.2 SEER2 6.7 HSPF2	56
GPHH3	13.4 SEER2 6.7 HSPF2	57
GPHM3	13.4 SEER2 6.7 HSPF2	58

Dual-Fuel

GPDM3	Up to 13.4.5 SEER2 6.7 HSPF2 81% AFUE	59
-------	---	----

Gas/Electric

GPGM5	Up to 15.2 SEER 81% AFUE	60
GPGM3	13.4 SEER2 81% AFUE	61
GPUM3	13.4 SEER2 81% AFUE	62

Controls & Thermostats

63

Nest Thermostat E + Goodman	64
TouchScreen Thermostats: GT4272, GT4273	65
ProStat Thermostats: PRS3110, PRS3210, PRS4110, PRS4210, PRS6110, PRS6320, PRS6420, PRS7325WF, PRS6390/PRS6490	66

THE RIGHT CHOICE



Goodman® brand — The right choice for millions and millions of people

For over three decades, the **Goodman** brand has concentrated on something more important than simple brand-recognition consumer advertising. And that's the design, engineering, and manufacture of dependable products that have helped millions and millions of homeowners achieve reliable, high-quality, and affordable indoor comfort. In addition, the **Goodman** brand has earned the loyalty and respect of thousands of local independent heating and cooling professionals across North America.

We believe that you, a local HVAC (Heating, Ventilation and Air Conditioning) professional, knows best about the specific indoor comfort needs and indoor air quality solutions of your customers. When you recommend a **Goodman** brand product, rest assured that customer will soon be receiving great indoor comfort, at a refreshingly affordable price.

Time-tested performance

The efficient movement of heat is a basic premise of the HVAC industry. Whether it's the removal of heat in conjunction with cooling products or the creation of heat for warmth, the HVAC world revolves around the thermodynamics of heat transfer. As you may know, the **Goodman** brand is recognized as a heat transfer expert. Investing in research and development is integral to the **Goodman** brand's success.





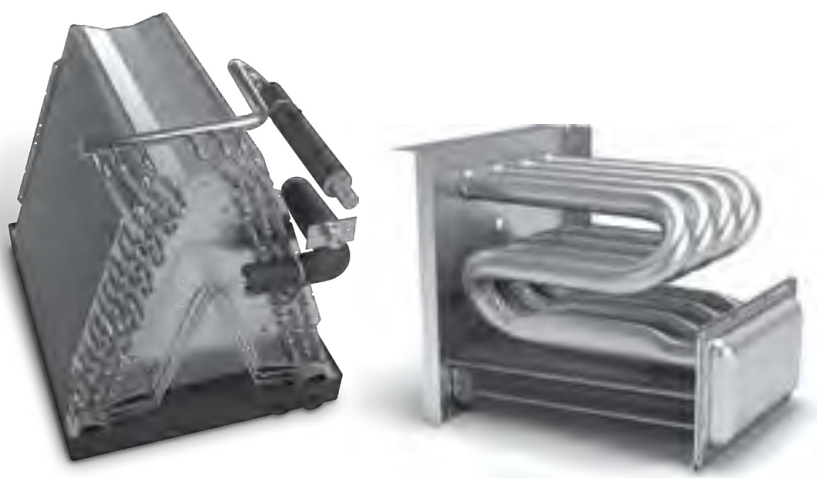
Goodman products offer a wide array of product features and enhancements that reinforce the durability and reliability of the entire **Goodman** brand product line, such as:

- High-efficiency air conditioners and heat pumps with the **Goodman** brand's **SmartCoil™** condensing coil — our most advanced 5mm copper tube and aluminum fin combination available
- **ComfortBridge™** Technology Compatible – Continuously monitors system performance for customized indoor comfort
- All-aluminum evaporator coils
- Heat pumps that include more standard features than previous models

Committed to quality

There's good reason that thousands of the nation's HVAC professionals recommend the **Goodman** brand. Dealers are completely comfortable that **Goodman** brand products will keep their customers satisfied and enhance their reputation. **Goodman** brand manufacturing facilities are ISO 9001-certified, an independent standard accepted worldwide as the benchmark for quality manufacturing and management processes, and ISO 14001-certified, an international environmental certification.

Goodman is focused on a few basic goals: build more reliable, longer-lasting products than anyone else; make durable cooling and heating products and systems as affordable as possible; and design everything for quick, trouble-free installations. Those values have led the **Goodman** brand this far and they will lead it into the future.



REGIONAL EFFICIENCY STANDARDS

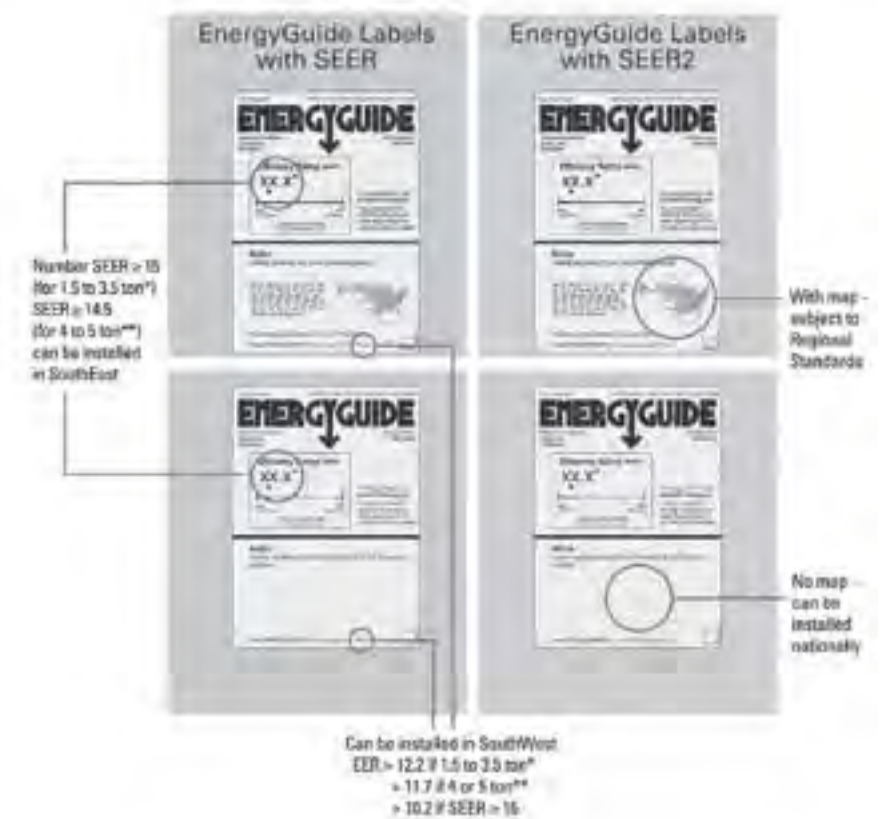
Labeling

There are two methods to help identify products subject to regional standards. The first is the EnergyGuide label that is noticeably different, with the inclusion of the map of the United States that identifies where the equipment can be installed.

The second is a separate statement that will be on the rating plate or on a label next to the rating plate called the “Install Prohibited” statement. All products subject to regional standards have both the EnergyGuide label and the Install Prohibited statement.

NOTE: The Federal Trade Commission (FTC) originally required a range of SEER be placed on Split System products subject to regional efficiency standards. However, they reversed their decision and now only a single value is listed (since mid-2017). Products in inventory may have mixed EnergyGuide labels (some having a range, others having a single value for SEER). FTC does not require re-labeling of existing product.

EnergyGuide Labels Currently In Effect



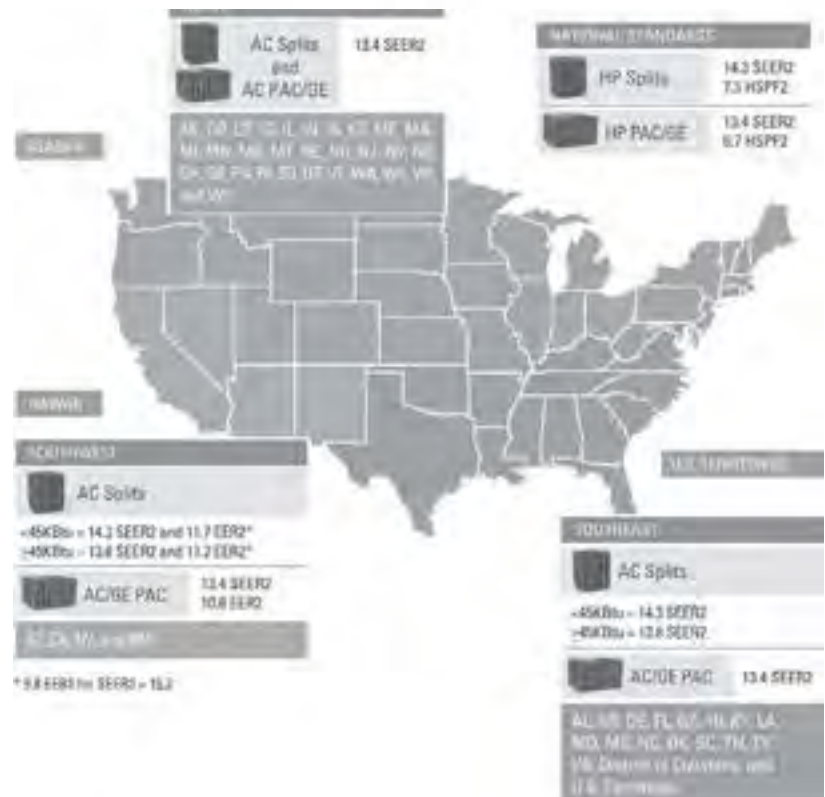
The newest U.S. Department of Energy (DOE) minimum efficiency changes go into effect on January 1, 2023, affecting all residential air conditioners and heat pumps we manufacture. The changes maintain regional standards that apply to Split System and Package Air Conditioners, with all metrics now based on the new metrics (SEER2/EER2/HSPF2). The DOE minimum efficiency standards include both national standards (which are based on date of manufacture) and regional standards (which are based on date of installation).

National Standards

- » Split system heat pumps (14.3 SEER2 / 7.5 HSPF2)
- » Single package air conditioner (13.4 SEER2)
- » Single package gas/electric heat pumps (13.4 SEER2 / 81% AFUE)
- » Single package gas/electric heat pumps (13.4 SEER2 / 6.7 HSPF2)

Regional Efficiency Standards

Only air conditioners (both split system and single package) are subject to regional efficiency standards. The map to the right summarizes the national and regional efficiency standards.



What You Need to Know as a Distributor

DOE defines a distributor as “a person (other than a manufacturer or retailer) to whom a consumer product is delivered or sold for purposes of distribution in commerce.” Therefore, if you resell product for sale other than to an end user, you may be considered a distributor as opposed to a contractor or dealer (see definitions below).

Distributors are required to comply with the requirements:

1. Do not knowingly sell product that will be installed in violation of regional standards.
2. Conduct regional standards training for all employees and customers.
3. Maintain records for all units subject to the regional standards for a period of 54 months. These records are to include the outdoor unit manufacturer, model number, serial number, date of purchase, date of sale, customer name and delivery address if delivered.

What You Need to Know as a Contractor/Dealer

As a contractor or dealer, you will also be required to adhere to requirements of the DOE HVAC Regional Standards Enforcement Rules. DOE has defined a contractor as “a person (other than the manufacturer or distributor) who sells to and/or installs for an end user a central air conditioner subject to regional standards.” DOE has defined a dealer as “a type of contractor, generally with a relationship with one or more specified manufacturers.”

The contractor/dealer requirements include the following:

1. Do not knowingly install product that is in violation of regional standards.
2. Conduct regional standards training for all employees.
3. Maintain records for all units subject to the regional standards for a period of 48 months. These records to include the indoor and outdoor unit manufacturer and model number, outdoor unit serial number, distributor purchased from, date and address of installation.

Also important is that DOE defines “installation of a central air conditioner” as “the connection of the refrigerant lines and/or electrical systems to make the central air conditioner operational.”

Enforcement

Enforcement of the standards will be at least partially via complaints registered with the DOE. DOE has set up an email for reporting suspected violations directly to them at EnergyEfficiencyEnforcement@doe.gov, or suspected violations can be reported by phone, at (202) 287-6997.

All verified violations will require remediation and can result in stiff fines. Notices of Violation will be posted publicly by the DOE. Further, if a distributor or contractor/dealer is found to routinely violate the standards, manufacturers can be prohibited from selling products to that party.

Contractors, dealers and distributors should be aware that the DOE may request copies of documentation proving product sales and installations are in compliance. Records requested by DOE must be provided within 30 days.

Questions

Questions about the efficiency standards can be emailed to RegionalStandardsQuestions@daikincomfort.com.

IMPORTANT NOTE:

The information provided is a summarized overview and is not intended to provide a complete description of the DOE Regional Standards. For more information regarding the DOE Regional Standards and the enforcement of these standards, please visit: www.energy.gov/gc/legal-resources/office-assistant-general-counsel-enforcement/regional-standards-enforcement



GOODMAN BRAND PRODUCT TECHNOLOGY

SmartShift® Heat Pump Defrost Control



The **SmartShift** Heat Pump Defrost Control helps to increase compressor reliability and reduces the noise level during the heat pump system defrost cycle. When outdoor temperatures fall below freezing and the heat pump is forced to initiate a defrost cycle, **SmartShift** simply turns off the compressor for 30 seconds allowing the system pressure to equalize and then it restarts the compressor. This seamless operation is triggered automatically eliminating unwanted noise caused by heat pump defrost changeover cycles.

SmartFrame™



At the core of our newly designed Air Handlers is the **SmartFrame**™

inner skeleton. It adds lateral stability to the chassis, provides a mounting location for all internal components, and provides additional insulation retention. Our insulation retention solution eliminates all adhesives from the cabinet insulation, which is secured through mechanical means by the **SmartFrame** sub-structure and additional retaining rods strategically placed near the blower assembly.

All Aluminum Coil



The All Aluminum evaporator coil is constructed from aluminum tubing, fins and panels to give you a single metal solution for outstanding, time-tested heat transfer performance properties. If you're looking for an evaporator coil that offers enhanced performance (as tested in Goodman labs), this is the product for you.

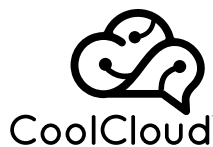
ComfortBridge™



When your new air conditioner or heat pump is paired with a **Goodman** brand gas furnace with **ComfortBridge** technology, performance data from the split system is gathered and used to make automatic adjustments that may help reduce the amount of energy used to cool your home.

Always in pursuit of innovative ideas, our engineers have designed **ComfortBridge** technology to help your entire HVAC system cost-effectively operate at peak performance — providing consistent energy-efficient home comfort. **ComfortBridge** technology works with any single-stage thermostat to help create customized indoor comfort specifically for you and your family.

CoolCloud™



The **CoolCloud** app allows qualified service technicians to wirelessly connect to, configure, and troubleshoot select **Goodman** brand HVAC systems. Once registered and securely paired with an air handler or gas furnace equipped with the **ComfortBridge** control system, the HVAC system communicates data wirelessly to a smartphone or tablet.

Clean Comfort®

CLEAN COMFORT® INDOOR AIR ESSENTIALS

Easily installed in new or existing heating and cooling systems,

Clean Comfort whole-home solutions work invisibly, silently and automatically to treat the air in your entire home. Whatever your indoor air issue may be, **Clean Comfort** has a whole-house solution that can help. www.cleancomfort.com



SPLIT SYSTEMS

GSXV9 | VARIABLE SPEED AIR CONDITIONER

UP TO 22.5 SEER2 | HIGH-EFFICIENCY, VARIABLE-SPEED, INVERTER DRIVEN



Model	Nominal Capacity (Tons)	Voltage-Phase-Hz	Dimensions			Service Valve		dBs	Ship Weight (lbs)	Energy Star® 2023
			W"	D"	H"	Liquid"	Suction"			
GSXV902410A*	2	208-230/1	35½	35½	38¼	¾"	¾"	71	241	Most Efficient ¹
GSXV903610A*	3	208-230/1	35½	35½	38¼	¾"	7/8"	74	253	Energy Star ⁺
GSXV904810A*	4	208-230/1	35½	35½	41¾	¾"	7/8"	75	353	Most Efficient ¹
GSXV906010A*	5	208-230/1	35½	35½	41¾	¾"	7/8"	75	353	Most Efficient ¹

¹ Products that are recognized as the Most Efficient of **ENERGY STAR**® in 2023 prevent greenhouse gas emissions by meeting rigorous energy efficiency performance levels set by the U.S. Environmental Protection Agency. Select combinations are recognized as the Most Efficient of **ENERGY STAR**® in 2023. Visit the following website for more information: www.energystar.gov/products/most_efficient.

* Proper sizing and installation of equipment is critical to achieve optimal performance. Split system air conditioners and heat pumps must be matched with appropriate coil components to meet **ENERGY STAR** criteria. Ask your contractor for details or visit www.energystar.gov. Products that are recognized as the Most Efficient of **ENERGY STAR**® in 2023 prevent greenhouse gas emissions by meeting rigorous energy efficiency performance levels set by the U.S. Environmental Protection Agency.

Daikin Comfort Technologies Manufacturing, L.P. reserves the right to discontinue, or change at any time, specifications or designs without notice or without incurring obligations.

Standard Features

- Variable-speed swing and scroll compressors
- High-density compressor sound blanket
- Integrated communicating ComfortBridge™ Technology
- Commissioning and diagnostics via indoor board Bluetooth with the CoolCloud™ phone and tablet application
- Variable-speed DC outdoor fan motor
- Control algorithmic logic
- In communicating mode, only two low-voltage wires to outdoor unit required
- Diagnostic indicator lights, seven-segment LED display, and fault code storage
- Field-selectable boost mode increases compressor speed during unusually high loads
- Field-installed bi-flow filter drier
- Coil and ambient temperature sensors
- AHRI Certified; ETL Listed

Cabinet Features

- Heavy-gauge, galvanized-steel cabinet
- Removable grille-style top design compliant with UL 60335-2-40
- Venturi for increased velocity of airflow
- Baked-on powder-paint finish
- 500-hour salt-spray tested
- Wire fan discharge grille
- Steel louver coil guard
- Top and side maintenance access
- Sweat connection service valves with easy access to gauge ports
- Single-panel access to controls with space provided for field-installed accessories
- When properly anchored, meets the 2020 Florida Building Code unit integrity requirements for hurricane-type winds (Anchor bracket kits available.)



LIFETIME
COMPRESSOR
LIMITED WARRANTY*

10 YEAR
UNIT
REPLACEMENT
LIMITED
WARRANTY*

10 YEAR
PARTS
LIMITED
WARRANTY*

* Complete warranty details available from your dealer or at www.goodmanmfg.com. To receive the Lifetime Compressor Limited Warranty (good for as long as you own your home), 10-Year Unit Replacement Limited Warranty, and 10-Year Parts Limited Warranty, online registration must be completed within 60 days of installation. Online registration is not required in California or Quebec. The duration of warranty coverages in Texas differs in some cases..



GSXC7 | AIR CONDITIONER

UP TO 17.2 SEER2 | HIGH-EFFICIENCY

Model	Nominal Capacity (Tons)	Voltage-Phase-Hz	Dimensions			Service Valve		dBs	Ship Weight (lbs)	Energy Star® 2023
			W"	D"	H"	Liquid"	Suction"			
GSXC702410A*	2	208/230-1	35 1/2	35 1/2	39 1/2	3/8"	3/4"	71	236	Most Efficient ¹
GSXC703610A*	3	208/230-1	35 1/2	35 1/2	39 1/2	3/8"	7/8"	72	238	Most Efficient ¹
GSXC704810A*	4	208/230-1	35 1/2	35 1/2	41 5/8	3/8"	7/8"	74	298	Most Efficient ¹
GSXC706010A*	5	208/230-1	35 1/2	35 1/2	41 5/8	3/8"	7/8"	75	305	Energy Star ⁺

¹ Products that are recognized as the Most Efficient of **ENERGY STAR**® in 2023 prevent greenhouse gas emissions by meeting rigorous energy efficiency performance levels set by the U.S. Environmental Protection Agency. Select combinations are recognized as the Most Efficient of **ENERGY STAR**® in 2023. Visit the following website for more information: www.energystar.gov/products/most_efficient.

⁺ Proper sizing and installation of equipment is critical to achieve optimal performance. Split system air conditioners and heat pumps must be matched with appropriate coil components to meet **ENERGY STAR** criteria. Ask your contractor for details or visit www.energystar.gov. Products that are recognized as the Most Efficient of **ENERGY STAR**® in 2023 prevent greenhouse gas emissions by meeting rigorous energy efficiency performance levels set by the U.S. Environmental Protection Agency.

Daikin Comfort Technologies Manufacturing, L.P. reserves the right to discontinue, or change at any time, specifications or designs without notice or without incurring obligations.

Standard Features

- Two-Stage Copeland Ultra-Tech scroll compressor
- Quiet two-speed ECM outdoor fan motor
- Integrated communicating ComfortBridge™ Technology
- Commissioning and diagnostics via Bluetooth indoor board via CoolCloud™ App
- Copeland® ComfortAlert™ built in diagnostics
- Copper tube/enhanced aluminum fin coil - 5mm on 2.0-3.0T
- Color-coded terminal strip for non-communicating set-up
- Only two low-voltage wires required in communication mode
- Factory-installed filter drier
- Factory-installed transformer
- Factory-installed high and low-pressure switches
- High-density foam compressor sound blanket
- Fully charged for 15' of tubing length
- Ambient temperature sensors
- Ground lug connection
- AHRI Certified - ETL Listed

Cabinet Features

- Removable grille-style top design compliant with UL 60335-2-40
- New venturi for improved airflow and less noise
- Heavy-gauge galvanized steel cabinet
- Baked-on powder-paint finish with 500-hour salt-spray approval
- Steel louver coil guard with rust-resistant screws.
- Top and side maintenance access
- Single-panel access to controls with space for field-installed accessories
- Service valves with sweat connections and easy-access gauge ports
- When properly anchored, meets the 2020 Florida Building Code unit integrity requirements for hurricane-type winds (Anchor bracket kits available.)



LIFETIME
COMPRESSOR
LIMITED WARRANTY*

10 YEAR
UNIT
REPLACEMENT
LIMITED WARRANTY*

10 YEAR
PARTS
LIMITED WARRANTY*

* Complete warranty details available from your dealer or at www.goodmanmfg.com. To receive the Lifetime Compressor Limited Warranty (good for as long as you own your home), 10-Year Unit Replacement Limited Warranty, and 10-Year Parts Limited Warranty, online registration must be completed within 60 days of installation. Online registration is not required in California or Quebec. The duration of warranty coverages in Texas differs in some cases..

GSXH5 | AIR CONDITIONER

UP TO 15.2 SEER2 | HIGH-EFFICIENCY SCROLL

Model	Nominal Capacity (Tons)	Voltage-Phase-Hz	Dimensions			Service Valve		dBs	Ship Weight (lbs)	ENERGY STAR® Certified¹
			W"	D"	H"	Liquid"	Suction"			
GSXH501810A*	1.5	208/230-1	26	26	27	3/8"	3/4"	72	144	YES
GSXH502410A*	2	208/230-1	29	29	32	3/8"	3/4"	73	169	YES
GSXH503010A*	2.5	208/230-1	35 1/2	35 1/2	39 1/2	3/8"	7/8"	72	224	YES
GSXH503610A*	3	208/230-1	35 1/2	35 1/2	39 1/2	3/8"	7/8"	75	224	YES
GSXH504210A*	3.5	208/230-1	35 1/2	35 1/2	36 1/2	3/8"	7/8"	72	282	YES
GSXH504810A*	4	208/230-1	35 1/2	35 1/2	36 1/2	3/8"	7/8"	73	282	YES
GSXH506010A*	5	208/230-1	35 1/2	35 1/2	41 5/8	3/8"	7/8"	76	305	YES

Daikin Comfort Technologies Manufacturing, L.P. reserves the right to discontinue, or change at any time, specifications or designs without notice or without incurring obligations.

¹Proper sizing and installation of equipment is critical to achieve optimal performance. Split system air conditioners and heat pumps must be matched with appropriate coil components to meet **ENERGY STAR** criteria. Ask your contractor for details or visit www.energystar.gov. Products that are recognized as the Most Efficient of **ENERGY STAR**® in 2023 prevent greenhouse gas emissions by meeting rigorous energy efficiency performance levels set by the U.S. Environmental Protection Agency.

Standard Features

- High-efficiency scroll compressor
- Factory-installed filter drier
- Fully charged for 15' of tubing length
- Copper tube/enhanced aluminum fin coil -5mm diameter on 1.5-3.0T
- Service valves with sweat connections and easy-to-access gauge ports
- Contactor with lug connection
- Ground lug connection
- AHRI Certified
- ETL Listed

Cabinet Features

- Removable grille-style top design compliant with UL 60335-2-40
- Heavy-gauge galvanized-steel cabinet
- Attractive Architectural Gray powder-paint finish with 500-hour salt-spray approval
- Steel louver coil guard
- Single-panel access to controls with space provided for field-installed accessories
- When properly anchored, meets the 2020 Florida Building Code unit integrity requirements for hurricane-type winds (Anchor bracket kits available.)



10 PARTS LIMITED YEAR WARRANTY*

* Complete warranty details available from your dealer or at www.goodmanmfg.com. To receive the 10-Year Parts Limited Warranty, online registration must be completed within 60 days of installation. Online registration is not required in California or Quebec. The duration of warranty coverages in Texas differs in some cases.

GSXM4 | AIR CONDITIONER

14.3 SEER2 | 1½ TO 3 TONS | ENERGY-EFFICIENT SCROLL

SPLIT SYSTEM
AIR CONDITIONERS

Model	Nominal Capacity (Tons)	Voltage-Phase	Dimensions			Service Valve		dBs	Ship Weight (lbs)
			W"	D"	H"	Liquid"	Suction"		
GSXM401810A*	1.5	208/230-1	26	26	27	3/8"	3/4"	72	144
GSXM402410A*	2	208/230-1	29	29	32	3/8"	3/4"	73	169
GSXM403010A*	2.5	208/230-1	35½	35½	39½	3/8"	7/8"	72	224
GSXM403610A*	3	208/230-1	35½	35½	39½	3/8"	7/8"	75	224

Daikin Comfort Technologies Manufacturing, L.P. reserves the right to discontinue, or change at any time, specifications or designs without notice or without incurring obligations.

Standard Features

- High-Efficiency Scroll Compressor
- Factory-installed filter drier
- Fully charged for 15' of tubing length
- Copper tube/ enhanced aluminum fin coil-5mm diameter on 1.5-3.0T
- Service valves with sweat connections and easy-to-access gauge ports
- Contactor with lug connection
- Ground lug connection
- AHRI Certified
- ETL Listed

Cabinet Features

- Removable grille style top style grill design compatible with UL 60335-2-40
- Heavy-gauge galvanized-steel cabinet
- Attractive Architectural Gray powder-paint finish with 500-hour salt-spray approval
- Steel louver coil guard
- Single-panel access to controls with space provided for field-installed accessories
- When properly anchored, meets the 2020 Florida Building Code unit integrity requirements for hurricane-type winds (Anchor bracket kits available.)



2023
SEER2

10 YEAR PARTS LIMITED WARRANTY

* Complete warranty details available from your local dealer or at www.goodmanmfg.com. To receive the 10-Year Parts Limited Warranty, online registration must be completed within 60 days of installation. Online registration is not required in California or Quebec. The duration of warranty coverages in Texas differs in some cases.

GSXB4 | AIR CONDITIONER

14.3 SEER2 | ENERGY-EFFICIENT SCROLL

Model	Nominal Capacity (Tons)	Voltage-Phase	Dimensions			Service Valve		dBs	Ship Weight (lbs)
			W"	D"	H"	Liquid"	Suction"		
GSXB401810A*	1.5	208/230-1	26	26	32½	¾"	¾"	71	153
GSXB402410A*	2	208/230-1	29	29	32	¾"	¾"	73	169
GSXB403010A*	2.5	208/230-1	35½	35½	39½	¾"	7/8"	72	224
GSXB403610A*	3	208/230-1	35½	35½	39½	¾"	7/8"	75	224
GSXB404210A*	3.5	208/230-1	35½	35½	36½	¾"	7/8"	72	282
GSXB404810A*	4	208/230-1	35½	35½	36½	¾"	7/8"	73	282
GSXB406010A*	5	208/230-1	35½	35½	41⅞	¾"	7/8"	76	305

Daikin Comfort Technologies Manufacturing, L.P. reserves the right to discontinue, or change at any time, specifications or designs without notice or without incurring obligations.

Standard Features

- Energy-Efficient Compressor
- Factory-installed filter drier
- Fully charged for 15' of tubing length
- Copper tube/ enhanced aluminum fin coil-5mm diameter on 1.5-3.0T
- Service valves with sweat connections and easy-to-access gauge ports
- Contactor with lug connection
- Ground lug connection
- AHRI Certified
- ETL Listed

Cabinet Features

- Removable grille-style top design compliant with UL 60335-2-40
- Heavy-gauge galvanized-steel cabinet
- Attractive Architectural Gray powder-paint finish with 500-hour salt-spray approval
- Steel louver coil guard
- Single-panel access to controls with space provided for field-installed accessories
- When properly anchored, meets the 2020 Florida Building Code unit integrity requirements for hurricane-type winds (Anchor bracket kits available.)



**20
23**
SEER2

10 YEARS PARTS LIMITED WARRANTY*

* Complete warranty details available from your local dealer or at www.goodmanmfg.com. To receive the 10-Year Parts Limited Warranty, online registration must be completed within 60 days of installation. Online registration is not required in California or Quebec. The duration of warranty coverages in Texas differs in some cases.

GSXN4 | AIR CONDITIONER

14.3 SEER2 | 1½ TO 5 TONS | ENERGY-EFFICIENT

Model	Nominal Capacity (Tons)	Voltage-Phase	Dimensions			Service Valve		dBs	Ship Weight (lbs)
			W"	D"	H"	Liquid"	Suction"		
GSXN401810A*	1.5	208/230-1	26	26	27	3/8"	3/4"	71	136
GSXN402410A*	2	208/230-1	26	26	32½	3/8"	3/4"	72	153
GSXN403010A*	2.5	208/230-1	29	29	39½	3/8"	7/8"	72	180
GSXN403610A*	3	208/230-1	35½	35½	35¾	3/8"	7/8"	72	210
GSXN404210A*	3.5	208/230-1	35½	35½	39½	3/8"	7/8"	71	248
GSXN404810A*	4	208/230-1	35½	35½	39½	3/8"	7/8"	73	248
GSXN406010A*	5	208/230-1	35½	35½	36½	3/8"	7/8"	75	282

Daikin Comfort Technologies Manufacturing, L.P. reserves the right to discontinue, or change at any time, specifications or designs without notice or without incurring obligations.

Standard Features

- Energy-Efficient Compressor
- Copper tube/ enhanced aluminum fin coil-5mm diameter on 1.5-4.0T
- Factory-installed filter drier
- Fully charged for 15' of tubing length
- Service valves with sweat connections and easy-to-access gauge ports
- Contactor with lug connection
- Ground lug connection
- AHRI Certified
- ETL Listed

Cabinet Features

- Removable grille-style top design compliant with UL 60335-2-40
- Heavy-gauge galvanized-steel cabinet
- Attractive Architectural Gray powder-paint finish with 500-hour salt-spray approval
- Steel louver coil guard
- Single-panel access to controls with space provided for field-installed accessories
- When properly anchored, meets the 2020 Florida Building Code unit integrity requirements for hurricane-type winds (Anchor bracket kits available.)


**20
23**
SEER2

10 YEARS PARTS LIMITED WARRANTY

* Complete warranty details available from your local dealer or at www.goodmanmfg.com. To receive the 10-Year Parts Limited Warranty, online registration must be completed within 60 days of installation. Online registration is not required in California or Quebec. The duration of warranty coverages in Texas differs in some cases.

GSXN3 | AIR CONDITIONER

13.4 SEER2 | 1½ TO 5 TONS | ENERGY-EFFICIENT

Model	Nominal Capacity (Tons)	Voltage-Phase	Dimensions			Service Valve		dBs	Ship Weight (lbs)
			W"	D"	H"	Liquid"	Suction"		
GSXN3N1810A*	1.5	208/230-1	26	26	27	3/8"	3/4"	73	130
GSXN3N2410A*	2	208/230-1	26	26	32½	3/8"	3/4"	73	138
GSXN3N3010A*	2.5	208/230-1	29	29	32½	3/8"	3/4"	76	143
GSXN3N3610A*	3	208/230-1	29	29	32½	3/8"	3/4"	71	168
GSXN3N4210A*	3.5	208/230-1	29	29	39½	3/8"	7/8"	70	203
GSXN3N4810A*	4	208/230-1	35½	35½	35¾	3/8"	7/8"	74	235
GSXN3N6010A*	5	208/230-1	35½	35½	39½	3/8"	7/8"	74	247

Daikin Comfort Technologies Manufacturing, L.P. reserves the right to discontinue, or change at any time, specifications or designs without notice or without incurring obligations. This product may not be installed in the Southeast (including Hawaii) or Southwest Regions as of Jan. 1, 2015 (see pp. 6-7 for details).

Standard Features

- Energy-Efficient Compressor
- Copper tube/ enhanced aluminum fin coil-5mm diameter
- Factory-installed filter drier
- Fully charged for 15' of tubing length
- Service valves with sweat connections and easy-to-access gauge ports
- Contactor with lug connection
- Ground lug connection
- AHRI Certified
- ETL Listed

Cabinet Features

- Removable grille-style top design compliant with UL 60335-2-40
- Venturi for increased velocity of airflow
- Heavy-gauge galvanized-steel cabinet
- Attractive Architectural Gray powder-paint finish with 500-hour salt-spray approval
- Steel louver coil guard
- Rust-resistant coated screws
- Single-panel access to controls with space provided for field-installed accessories



**20
23**
SEER2

10 PARTS
YEAR LIMITED
WARRANTY*

* Complete warranty details available from your local dealer or at www.goodmanmfg.com. To receive the 10-Year Parts Limited Warranty, online registration must be completed within 60 days of installation. Online registration is not required in California or Quebec. The duration of warranty coverages in Texas differs in some cases.

GSZV9 | VARIABLE SPEED HEAT PUMP



UP TO 22.5 SEER2 & 8.2 HSPF2 | HIGH-EFFICIENCY INVERTER

SPLIT SYSTEM
HEAT PUMPS

Model	Nominal Capacity (Tons)	Voltage-Phase	Dimensions			Service Valve		dBs	Ship Weight (lbs)	Energy Star® 2023
			W"	D"	H"	Liquid"	Suction"			
GSZV902410A*	2	208-230/1	35½	35½	38¼	¾"	¾"	68	243	Most Efficient ¹
GSZV903610A*	3	208-230/1	35½	35½	41¼	¾"	7/8"	70	318	Most Efficient ¹
GSZV904810A*	4	208-230/1	35½	35½	41¼	¾"	7/8"	75	318	Most Efficient ¹
GSZV906010A*	5	208-230/1	35½	35½	41¼	¾"	7/8"	75	318	No

¹ Products that are recognized as the Most Efficient of **ENERGY STAR**® in 2023 prevent greenhouse gas emissions by meeting rigorous energy efficiency performance levels set by the U.S. Environmental Protection Agency. Select combinations are recognized as the Most Efficient of **ENERGY STAR**® in 2023. Visit the following website for more information: www.energystar.gov/products/most_efficient.

Daikin Comfort Technologies Manufacturing, L.P. reserves the right to discontinue, or change at any time, specifications or designs without notice or without incurring obligations.

Standard Features

- Variable-speed swing compressors
- High-density compressor sound blanket
- Integrated communicating ComfortBridge™ Technology
- Commissioning and diagnostics via indoor board Bluetooth with the CoolCloud™ phone and tablet application
- Goodman control algorithmic logic
- In communicating mode, only two low-voltage wires to outdoor unit required
- Diagnostic indicator lights, seven-segment LED display, and fault code storage
- Field-selectable boost mode increases compressor speed during unusually high loads
- Quiet DC outdoor fan motor
- Fully charged for 15' of tubing length
- Field-installed bi-flow filter drier
- Coil and ambient temperature sensors
- Suction pressure transducer (in cooling mode)
- Sweat connection service valves with easy access to gauge ports
- AHRI Certified; ETL Listed

Cabinet Features

- Heavy-gauge galvanized-steel cabinet
- Removable grille-style top design compliant with UL 60335-2-40
- Venturi for increased velocity of airflow
- Custom two-tone gray powder-paint finish
- 500-hour salt-spray tested
- Wire fan discharge grille
- Steel louver coil guard
- Top and side maintenance access
- Single-panel access to controls with space provided for field-installed accessories
- When properly anchored, meets the 2020 Florida Building Code unit integrity requirements for hurricane-type winds (Anchor bracket kits available.)



**Most Efficient
2023**

www.energystar.gov

**20
23
SEER2**

**LIFETIME
COMPRESSOR
LIMITED WARRANTY***

**10 YEAR
UNIT
REPLACEMENT
LIMITED
WARRANTY***

**10 YEAR
PARTS
LIMITED
WARRANTY***

* Complete warranty details available from your dealer or at www.goodmanmfg.com. To receive the Lifetime Compressor Limited Warranty (good for as long as you own your home), 10-Year Unit Replacement Limited Warranty, and 10-Year Parts Limited Warranty, online registration must be completed within 60 days of installation. Online registration is not required in California or Quebec. The duration of warranty coverages in Texas differs in some cases.

GSZC7 | TWO-STAGE HEAT PUMP

UP TO 17.2 SEER2 AND 8.2 HSPF2 | HIGH-EFFICIENCY



Model	Nominal Capacity (Tons)		Voltage-Phase	Dimensions			Service Valve		dBs	Ship Weight (lbs)	Energy Star® 2023
	Cooling	Heating ¹		W"	D"	H"	Liquid"	Suction"			
GSZC702410A*	2	2	208/230-1	35½	35½	39 1/2	3/8"	3/4"	71	239	Most Efficient ²
GSZC703610A*	3	3	208/230-1	35½	35½	35 3/4	3/8"	7/8"	75	277	Most Efficient ²
GSZC704810A*	4	4	208/230-1	35½	35½	41 5/8	3/8"	1 1/8"	77	327	Most Efficient ²
GSZC706010A*	5	5	208/230-1	35½	35½	41 5/8	3/8"	1 1/8"	78	335	Energy Star ³

¹ Tons of Refrigeration

² Products that are recognized as the Most Efficient of **ENERGY STAR**® in 2023 prevent greenhouse gas emissions by meeting rigorous energy efficiency performance levels set by the U.S. Environmental Protection Agency. Select combinations are recognized as the Most Efficient of **ENERGY STAR**® in 2023. Visit the following website for more information: www.energystar.gov/products/most_efficient.

³ Proper sizing and installation of equipment is critical to achieve optimal performance. Split system air conditioners and heat pumps must be matched with appropriate coil components to meet **ENERGY STAR** criteria. Ask your contractor for details or visit www.energystar.gov. Products that are recognized as the Most Efficient of **ENERGY STAR**® in 2023 prevent greenhouse gas emissions by meeting rigorous energy efficiency performance levels set by the U.S. Environmental Protection Agency.

Daikin Comfort Technologies Manufacturing, L.P. reserves the right to discontinue, or change at any time, specifications or designs without notice or without incurring obligations.

Standard Features

- Two-Stage Copeland® UltraTech scroll compressor
- High-density foam compressor sound blanket
- Integrated communicating ComfortBridge™ technology
- Commissioning and diagnostics via indoor board Bluetooth with the CoolCloud™ phone and tablet application
- ComfortAlert™ built in diagnostics
- Copper tube/enhanced aluminum fin coil - 5mm on 2.0-3.0T
- Efficient, two-speed ECM condenser fan motor
- Simple low-voltage wiring to outdoor unit in communicating mode
- Diagnostic indicator lights and storage of six fault codes
- Color-coded terminal strip for non-communicating set-up
- High- and low-pressure switches
- Time-delay technology with short-cycle protection to ensure quiet, reliable defrost
- Factory-installed bi-flow liquid-line filter drier
- Factory-installed suction-line accumulator
- Factory-installed compressor crankcase heater
- Factory-installed high capacity muffler
- Factory-installed coil and ambient temperature sensors
- AHRI Certified; ETL Listed

Cabinet Features

- Grille-style sound control top design
- Custom Nickel Gray powder-paint finish
- 500-hour salt-spray tested
- Wire fan discharge grille
- Steel louver coil guard
- Single panel access to controls with space provided for field-installed accessories
- Sweat connection service valves
- with easy access to gauge ports
- When properly anchored, meets the 2020 Florida
- Building Code unit integrity requirements for
- hurricane-type winds (Anchor bracket kits available.)



LIFETIME
COMPRESSOR
LIMITED WARRANTY*

10 YEAR
REPLACEMENT
UNIT LIMITED
WARRANTY*

10 YEAR
PARTS
LIMITED
WARRANTY*

* Complete warranty details available from your dealer or at www.goodmanmfg.com. To receive the Lifetime Compressor Limited Warranty (good for as long as you own your home), 10-Year Unit Replacement Limited Warranty, and 10-Year Parts Limited Warranty, online registration must be completed within 60 days of installation. Online registration is not required in California or Quebec. The duration of warranty coverages in Texas differs in some cases.

GSZH5 | HEAT PUMP

UP TO 15.2 SEER2 & 7.8 HSPF2 | HIGH-EFFICIENCY

Model	Nominal Capacity (Tons)		Voltage-Phase	Dimensions			Service Valve		dBs	Ship Weight (lbs)
	Cooling	Heating ¹		W"	D"	H"	Liquid"	Suction"		
GSZH501810A*	1½	1½	208/230-1	29	29	39½	¾"	¾"	68	186
GSZH502410A*	2	2	208/230-1	35½	35½	35¾	¾"	¾"	72	213
GSZH503010A*	2½	2½	208/230-1	35½	35½	39½	¾"	¾"	69	235
GSZH503610A*	3	3	208/230-1	35½	35½	39½	¾"	7/8"	72	242
GSZH504210A*	3½	3½	208/230-1	35½	35½	35¾	¾"	7/8"	75	284
GSZH504810A*	4	4	208/230-1	35½	35½	36½	¾"	7/8"	74	292
GSZH506010A*	5	5	208/230-1	35½	35½	41⅝	¾"	7/8"	76	329

¹Tons of Refrigeration

Daikin Comfort Technologies Manufacturing, L.P. reserves the right to discontinue, or change at any time, specifications or designs without notice or without incurring obligations.

Standard Features

- High-efficiency scroll compressor
- SmartShift® technology to ensure quiet reliable defrost
- Copper tube/ enhanced aluminum fin coil- 5mm diameter on 1.5-3.5T
- Factory-installed suction-line accumulator
- Factory-installed compressor crankcase heater
- Factory-installed high-capacity muffler
- High- and low-pressure switches
- Service valves with sweat connections and easy access to gauge ports
- Fully charged for 15' of tubing length
- Contactor with lug connection
- Ground lug connection
- AHRI Certified; ETL Listed

Cabinet Features

- Removable grille style top design compliant with UL 60335-2-40
- Steel louver coil guard
- Heavy-gauge galvanized-steel cabinet
- Attractive Architectural Gray powder-paint finish with 500-hour salt-spray approval
- Top and side maintenance access
- Single panel access to controls with space provided for field-installed accessories
- When properly anchored, meets the 2020 Florida Building Code unit integrity requirements for hurricane-type winds (Anchor bracket kits available.)


**20
23**
SEER2

**10 PARTS
YEAR LIMITED
WARRANTY***

* Complete warranty details available from your local dealer or at www.goodmanmfg.com. To receive the 10-Year Parts Limited Warranty, online registration must be completed within 60 days of installation. Online registration is not required in California or Quebec. The duration of warranty coverages in Texas differs in some cases.

GSZM4 | HEAT PUMP

14.3 SEER2 & 7.5 HSPF2 | 1½ TO 3 TONS | ENERGY-EFFICIENT

Model	Nominal Capacity (Tons)		Voltage-Phase	Dimensions			Service Valve		dBs	Ship Weight (lbs)
	Cooling	Heating¹		W"	D"	H"	Liquid"	Suction"		
GSZM401810A*	1½	1½	208/230-1	29	29	35 11/16	¾"	¾"	68	179
GSZM402410A*	2	2	208/230-1	29	29	35 11/16	¾"	¾"	72	179
GSZM403010A*	2½	2½	208/230-1	29	29	39 8/16	¾"	¾"	75	190
GSZM403610A*	3	3	208/230-1	35½	35½	39 10/16	¾"	7/8"	72	234

¹Tons of Refrigeration

Daikin Comfort Technologies Manufacturing, L.P. reserves the right to discontinue, or change at any time, specifications or designs without notice or without incurring obligations.

Standard Features

- High-efficiency scroll compressor
- SmartShift® technology to ensure quiet reliable defrost
- Enhanced aluminum fin coil with 5 mm diameter copper tubes in 1.5- to 3.5-ton
- Single-speed PSC condenser fan motor
- Factory-installed bi-flow liquid-line filter drier
- Factory-installed suction-line accumulator
- Factory-installed compressor crankcase heater
- Factory-installed high-capacity muffler
- High- and low-pressure switches
- Service valves with sweat connections and easy access to gauge ports
- Fully charged for 15' of tubing length
- Contactor with lug connection
- Ground lug connection
- AHRI Certified; ETL Listed

Cabinet Features

- Removable grille-style top design compliant with UL 60335-2-40
- Steel louver coil guard
- Heavy-gauge galvanized-steel cabinet
- Attractive Architectural Gray powder-paint finish with 500-hour salt-spray approval
- Top and side maintenance access
- When properly anchored, meets the 2020 Florida Building Code unit integrity requirements for hurricane-type winds (Anchor bracket kits available.)



**20
23**
SEER2

10 PARTS
YEAR LIMITED
WARRANTY

* Complete warranty details available from your local dealer or at www.goodmanmfg.com. To receive the 10-Year Parts Limited Warranty, online registration must be completed within 60 days of installation. Online registration is not required in California or Quebec. The duration of warranty coverages in Texas differs in some cases.

GSZB4 | HEAT PUMP

14.3 SEER2 & 7.5 HSPF2 | ENERGY-EFFICIENT

SPLIT SYSTEM
HEAT PUMPS

Model	Nominal Capacity (Tons)		Voltage-Phase	Dimensions			Service Valve		dBs	Ship Weight (lbs)
	Cooling	Heating ¹		W"	D"	H"	Liquid"	Suction"		
GSZB401810A*	1½	1½	208/230-1	29	29	35 11/16	¾"	¾"	70	176
GSZB402410A*	2	2	208/230-1	29	29	35 11/16	¾"	¾"	74	175
GSZB403010A*	2½	2½	208/230-1	29	29	39 8/16	¾"	¾"	75	190
GSZB403610A*	3	3	208/230-1	35½	35½	39 10/16	¾"	7/8"	72	234
GSZB404210A*	3½	3½	208/230-1	35½	35½	35 13/16	¾"	7/8"	75	284
GSZB404810A*	4	4	208/230-1	35½	35½	36 7/16	¾"	7/8"	74	292
GSZB406010A*	5	5	208/230-1	35½	35½	41 10/16	¾"	7/8"	75	325

¹Tons of Refrigeration

Daikin Comfort Technologies Manufacturing, L.P. reserves the right to discontinue, or change at any time, specifications or designs without notice or without incurring obligations.

Standard Features

- Energy-efficient compressor
- SmartShift® technology to ensure quiet reliable defrost
- Enhanced aluminum fin coil with 5 mm diameter copper tubes in 1.5- to 3.5-ton
- Single-speed PSC condenser fan motor
- Factory-installed bi-flow liquid-line filter drier
- Factory-installed suction-line accumulator
- Factory-installed compressor crankcase heater
- Factory-installed high-capacity muffler
- High- and low-pressure switches
- Service valves with sweat connections and easy access to gauge ports
- Fully charged for 15' of tubing length
- Contactor with lug connection
- Ground lug connection
- AHRI Certified; ETL Listed

Cabinet Features

- Removable grille-style top design compliant with UL 60335-2-40
- Steel louver coil guard
- Heavy-gauge galvanized-steel cabinet
- Attractive Architectural Gray powder-paint finish with 500-hour salt-spray approval
- Top and side maintenance access
- When properly anchored, meets the 2020 Florida Building Code unit integrity requirements for hurricane-type winds (Anchor bracket kits available.)



**20
23**
SEER2

10 YEARS PARTS LIMITED WARRANTY*

* Complete warranty details available from your local dealer or at www.goodmanmfg.com. To receive the 10-Year Parts Limited Warranty, online registration must be completed within 60 days of installation. Online registration is not required in California or Quebec. The duration of warranty coverages in Texas differs in some cases.



GAS FURNACES

GMVM97 (B) | MODULATING GAS FURNACE

UP TO 97% AFUE | HIGH-EFFICIENCY, VARIABLE-SPEED ECM



GAS
FURNACES

Model	High-Fire Heating ¹		Low-Fire Heating ¹		AFUE %	Tons A/C ²	Dimensions			Ship Weight (lbs)	ENERGY STAR® Certified
	Input	Output	Input	Output			W"	D"	H"		
GMVM970603BNA	60,000	58,800	30,000	29,400	97	3	17½	28⅞	34½	118	YES
GMVM970803BNA	80,000	77,600	40,000	38,800	97	3	17½	28⅞	34½	121	YES
GMVM970804CNA	80,000	78,400	40,000	39,200	97	4	21	28⅞	34½	142	YES
GMVM971005CNA	100,000	97,000	50,000	48,500	97	5	21	28⅞	34½	144	YES
GMVM971205DNA	120,000	116,400	60,000	58,200	97	5	24½	28⅞	34½	157	YES

¹ BTU/h ² Max tons @ 0.5" ESP

Daikin Comfort Technologies Manufacturing, L.P. reserves the right to discontinue, or change at any time, specifications or designs without notice or without incurring obligations.

Standard Features

- Integrated communicating ComfortBridge™ Technology
- Commissioning and diagnostics via on board Bluetooth with the CoolCloud™ phone and tablet application
- Heavy-duty aluminized-steel tubular heat exchanger
- Stainless-steel secondary heat exchanger
- Self-calibrating modulating gas valve auto-configure for each installation
- Durable Silicon Nitride igniter
- Quiet variable-speed induced draft blower
- Self-diagnostic control board with constant memory fault code history output to a dual 7-segment display
- Color-coded low-voltage terminals with provisions for electronic air cleaner
- Efficient and quiet variable-speed airflow system gently ramps up or down according to heating or cooling demand
- Multiple continuous fan speed options offer quiet air circulation
- Auto-Comfort and enhanced dehumidification modes available
- All models comply with California 40 ng/J Low NO_x emissions standard
- Can no longer be installed in California's South Coast Air Quality Management District (SCAQMD) on or after October 1, 2019.
- AHRI Certified; ETL Listed

Cabinet Features

- Designed for multi-position installation: upflow, horizontal left or right
- Certified for direct vent (2-pipe) or non-direct vent (1-pipe)
- Easy-to-install top venting with optional side venting
- Convenient left or right connection for gas and electrical service
- Cabinet air leakage ≤ 2%
- Heavy-gauge steel cabinet with durable finish
- Fully insulated heat exchanger and blower section
- Airtight solid bottom or side return with easy-cut tabs for effortless removal in bottom air-inlet applications



LIFETIME
HEAT EXCHANGER
LIMITED WARRANTY*

10 YEAR
UNIT
REPLACEMENT
LIMITED WARRANTY*

10 YEAR
PARTS
LIMITED WARRANTY*

* Complete warranty details available from your local dealer or at www.goodmanmfg.com. To receive the Lifetime Heat Exchanger Limited Warranty (good for as long as you own your home), 10-Year Unit Replacement Limited Warranty, and 10-Year Parts Limited Warranty, online registration must be completed within 60 days of installation. Online registration is not required in California or Quebec. The duration of warranty coverages in Texas differs in some cases.

GCVM97 (B) | MODULATING GAS FURNACE

97% AFUE | HIGH-EFFICIENCY, VARIABLE-SPEED ECM



Model	High-Fire Heating ¹		Low-Fire Heating ¹		AFUE %	Tons A/C ²	Dimensions			Ship Weight (lbs)	ENERGY STAR® Certified
	Input	Output	Input	Output			W"	D"	H"		
GCVM970603BNA	60,000	58,200	30,000	29,100	97	3	17½	28⅞	34½	117	YES
GCVM970803BNA	80,000	77,600	40,000	38,800	97	3	17½	28⅞	34½	122	YES
GCVM970804CNA	80,000	77,600	40,000	38,800	97	4	21	28⅞	34½	144	YES
GCVM971005CNA	100,000	97,000	50,000	48,500	97	5	21	28⅞	34½	146	YES

¹ BTU/h ² Max tons @ 0.5" ESP

Daikin Comfort Technologies Manufacturing, L.P. reserves the right to discontinue, or change at any time, specifications or designs without notice or without incurring obligations.

Standard Features

- Integrated communicating ComfortBridge™ Technology
- Commissioning and diagnostics via on board Bluetooth with the CoolCloud™ phone and tablet application
- Heavy-duty aluminized-steel tubular heat exchanger
- Stainless-steel secondary heat exchanger
- Self-calibrating modulating gas valve auto-configure for each installation
- Durable Silicon Nitride igniter
- Quiet variable-speed induced draft blower
- Self-diagnostic control board with constant memory fault code history output to a dual 7-segment display
- Color-coded low-voltage terminals with provisions for electronic air cleaner
- Efficient and quiet variable-speed airflow system gently ramps up or down according to heating or cooling demand
- Multiple continuous fan speed options offer quiet air circulation
- Auto-Comfort and enhanced dehumidification modes available
- All models comply with California 40 ng/J Low NO_x emissions standard
- Can no longer be installed in California's South Coast Air Quality Management District (SCAQMD) on or after October 1, 2019.
- AHRI Certified; ETL Listed

Cabinet Features

- Designed for multi-position installation: upflow, horizontal left or right
- Certified for direct vent (2-pipe) or non-direct vent (1-pipe)
- Easy-to-install top venting with optional side venting
- Convenient left or right connection for gas and electrical service
- Cabinet air leakage ≤ 2%
- Heavy-gauge steel cabinet with durable finish
- Fully insulated heat exchanger and blower section
- Airtight solid bottom or side return with easy-cut tabs for effortless removal in bottom air-inlet applications



LIFETIME
HEAT EXCHANGER
LIMITED WARRANTY*

10 YEAR
UNIT REPLACEMENT
LIMITED WARRANTY*

10 YEAR
PARTS
LIMITED WARRANTY*

* Complete warranty details available from your local dealer or at www.goodmanmfg.com. To receive the Lifetime Heat Exchanger Limited Warranty (good for as long as you own your home), 10-Year Unit Replacement Limited Warranty, and 10-Year Parts Limited Warranty, online registration must be completed within 60 days of installation. Online registration is not required in California or Quebec. The duration of warranty coverages in Texas differs in some cases.

GMVC96 (B) / GCVC96 (B) | TWO-STAGE GAS FURNACE



UP TO 96% AFUE | HIGH-EFFICIENCY, VARIABLE-SPEED ECM

Model	High-Fire Heating ¹		Low-Fire Heating ¹		AFUE %	Tons A/C ²	Dimensions			Ship Weight (lbs)	ENERGY STAR® Certified
	Input	Output	Input	Output			W"	D"	H"		
GMVC960403BNB	40,000	38,400	28,000	26,880	96	3	17½	28⅞	34½	114	YES
GMVC960603BNB	60,000	57,600	42,000	40,320	96	3	17½	28⅞	34½	117	YES
GMVC960803BNB	80,000	76,800	56,000	53,760	96	3	17½	28⅞	34½	120	YES
GMVC960804CNB	80,000	76,800	56,000	53,760	96	4	21	28⅞	34½	141	YES
GMVC961005CNB	100,000	96,000	70,000	67,200	96	5	21	28⅞	34½	143	YES
GMVC961005DNB	100,000	96,000	70,000	67,200	96	5	24½	28⅞	34½	153	YES
GMVC961205DNB	120,000	115,200	84,000	80,640	96	5	24½	28⅞	34½	156	YES
GCVC960403BNB	40,000	38,400	28,000	26,880	96	3	17½	28⅞	34½	116	YES
GCVC960603BNB	60,000	57,600	42,000	40,320	96	3	17½	28⅞	34½	119	YES
GCVC960804CNB	80,000	76,800	56,000	53,760	96	4	21	28⅞	34½	143	YES
GCVC961005CNB	100,000	96,000	70,000	67,200	96	5	21	28⅞	34½	145	YES
GCVC961205DNB	120,000	115,200	84,000	80,640	96	5	24½	28⅞	34½	158	YES

¹ BTU/h ² Max tons @ 0.5" ESP

Daikin Comfort Technologies Manufacturing, L.P. reserves the right to discontinue, or change at any time, specifications or designs without notice or without incurring obligations.

Standard Features

- Integrated communicating ComfortBridge™ Technology
- Commissioning and diagnostics via on board Bluetooth with the CoolCloud™ phone and tablet application
- Heavy-duty aluminized-steel tubular heat exchanger
- Stainless-steel secondary heat exchanger
- Two-stage gas valve provides quiet, economical heating
- Durable Silicon Nitride igniter
- Quiet two-speed induced draft blower
- Compatible with any single-stage thermostat
- Self-diagnostic control board with constant memory fault code history output to a triple 7-segment display
- Color-coded low-voltage terminals with provisions for electronic air cleaner
- Efficient and quiet variable-speed airflow system gently ramps up or down according to heating or cooling demand
- Multiple continuous fan speed options offer quiet air circulation
- Auto-Comfort and enhanced dehumidification modes available
- All models comply with California 20 ng/J Low NOx emissions standard

- Can no longer be installed in California's South Coast Air Quality Management District (SCAQMD) on or after October 1, 2019.
- AHRI Certified; ETL Listed

Cabinet Features

- Designed for multi-position installation: GMVC96: upflow, horizontal left or right
GCVC96: downflow, horizontal left or right
- Certified for direct vent (2-pipe) or non-direct vent (1-pipe)
- Easy to install top venting with optional side venting
- Convenient left or right connection for gas and electrical service
- Cabinet air leakage (QLeak) ≤ 2%
- Heavy-gauge steel cabinet with durable baked-enamel finish
- Fully insulated heat exchanger and blower section
- Airtight solid bottom or side-return with easy-cut tabs for effortless removal in bottom air-inlet applications


LIFETIME
HEAT EXCHANGER
LIMITED WARRANTY*

10 YEAR
REPLACEMENT
LIMITED WARRANTY*

10 YEAR
PARTS
LIMITED WARRANTY*

* Complete warranty details available from your local dealer or at www.goodmanmfg.com. To receive the Lifetime Heat Exchanger Limited Warranty (good for as long as you own your home), 10-Year Unit Replacement Limited Warranty, and 10-Year Parts Limited Warranty, online registration must be completed within 60 days of installation. Online registration is not required in California or Quebec. The duration of warranty coverages in Texas differs in some cases.

GM9C96 | TWO-STAGE GAS FURNACE

UP TO 96% AFUE | TWO-STAGE, MULTI-SPEED ECM

Model	High-Fire Heating ¹		Low-Fire Heating ¹		AFUE %	Tons A/C ²	Dimensions			Ship Weight (lbs)
	Input	Output	Input	Output			W"	D"	H"	
GM9C960303ANA	30,000	28,800	21,000	20,160	96	3	14"	28 ⁷ / ₈	34 ¹ / ₂	106
GM9C960403ANA	40,000	38,400	28,000	26,880	96	3	14"	28 ⁷ / ₈	34 ¹ / ₂	106
GM9C960603ANA	60,000	57,600	42,000	40,320	96	3	14"	28 ⁷ / ₈	34 ¹ / ₂	110
GM9C960603BNA	60,000	57,600	42,000	40,320	96	3	17 ¹ / ₂	28 ⁷ / ₈	34 ¹ / ₂	115
GM9C960803BNA	80,000	76,800	56,000	53,760	96	3	17 ¹ / ₂	28 ⁷ / ₈	34 ¹ / ₂	118
GM9C960804CNA	80,000	76,800	100,000	53,760	96	4	21"	28 ⁷ / ₈	34 ¹ / ₂	123
GM9C961004CNA	100,000	96,000	70,000	67,200	96	4	21"	28 ⁷ / ₈	34 ¹ / ₂	140
GM9C961005CNA	100,000	96,000	70,000	67,200	96	5	21"	28 ⁷ / ₈	34 ¹ / ₂	140
GM9C961205DNA	120,000	115,200	84,000	80,640	96	5	24 ¹ / ₂	28 ⁷ / ₈	34 ¹ / ₂	154

¹ BTU/h ² Max tons @ 0.5" ESP

Daikin Comfort Technologies Manufacturing, L.P. reserves the right to discontinue, or change at any time, specifications or designs without notice or without incurring obligations.

Standard Features

- Energy-efficient, multi-speed ECM blower motor
- Heavy-duty, aluminized-steel tubular heat exchanger
- Stainless-steel secondary heat exchanger
- Two-stage gas valve provides quiet, economical heating
- Durable Silicon Nitride igniter
- Quiet two-speed induced draft blower
- Self-diagnostic control board with constant memory fault code history output to a LED
- Color-coded low-voltage terminals with provisions for electronic air cleaner and humidifier
- Low continuous fan speed options offer quiet air circulation
- All models comply with California 40 ng/J Low NOx emissions standard
- Can no longer be installed in California's South Coast Air Quality Management District (SCAQMD) on or after October 1, 2019.
- AHRI Certified; ETL Listed

Cabinet Features

- Designed for multi-position installation —upflow, horizontal left or right
- Certified for direct vent (2-pipe) or non-direct vent (1-pipe)
- Easy-to-install top venting with optional side venting
- Convenient left or right connection for gas and electrical service
- Cabinet air leakage (QLeak) ≤ 2%
- Heavy-gauge steel cabinet with durable finish
- Fully insulated heat exchanger and blower section
- Airtight solid bottom or side return with easy-cut tabs for effortless removal in bottom air-inlet applications



LIFETIME
HEAT EXCHANGER
LIMITED WARRANTY*

10 YEAR
REPLACEMENT
LIMITED WARRANTY*

10 YEAR
PARTS
LIMITED WARRANTY*

* Complete warranty details available from your local dealer or at www.goodmanmfg.com. To receive the Lifetime Heat Exchanger Limited Warranty (good for as long as you own your home), 10-Year Unit Replacement Limited Warranty, and 10-Year Parts Limited Warranty, online registration must be completed within 60 days of installation. Online registration is not required in California or Quebec. The duration of warranty coverages in Texas differs in some cases.

GC9C96 | TWO-STAGE GAS FURNACE

UP TO 96% AFUE | ENERGY-EFFICIENT, MULTI-SPEED ECM

Model	High-Fire Rate ¹		Low-Fire Rate ¹		AFUE %	Tons A/C ²	Dimensions			Ship Weight (lbs)
	Input	Output	Input	Output			W"	D"	H"	
GC9C960403BNA	40,000	38,400	28,000	26,880	96	3	17½	28⅞	34½	112
GC9C960603BNA	60,000	57,600	42,000	40,320	96	3	17½	28⅞	34½	115
GC9C960803BNA	80,000	76,800	56,000	53,760	96	3	17½	28⅞	34½	118
GC9C961005CNA	100,000	96,000	70,000	67,200	96	5	21"	28⅞	34½	140

¹ BTU/H ² @ 0.1"–0.8" ESP

Daikin Comfort Technologies Manufacturing, L.P. reserves the right to discontinue, or change at any time, specifications or designs without notice or without incurring obligations.

Standard Features

- Energy-efficient multi-speed ECM blower motor
- Heavy-duty aluminized-steel tubular heat exchanger
- Stainless-steel secondary heat exchanger
- Two-stage gas valve provides quiet, economical heating
- Durable Silicon Nitride igniter
- Quiet two-speed induced draft blower
- Self-diagnostic control board with constant memory fault code history output to a LED
- Color-coded low-voltage terminals with provisions for electronic air cleaner and humidifier
- Low continuous fan speed options offer quiet air circulation
- All models comply with California 40 ng/J Low NO_x emissions standard
- Can no longer be installed in California's South Coast Air Quality Management District (SCAQMD) on or after October 1, 2019.
- AHRI Certified; ETL Listed

Cabinet Features

- Designed for multi-position installation: downflow, horizontal left or right
- Certified for direct vent (2-pipe) or non-direct vent (1-pipe)
- Easy-to-install top venting with optional side venting
- Convenient left or right connection for gas and electrical service
- Cabinet air leakage ≤ 2%
- Heavy-gauge steel cabinet with durable finish
- Fully insulated heat exchanger and blower section
- Airtight solid bottom or side return with easy-cut tabs for effortless removal in bottom air-inlet applications


LIFETIME
 HEAT EXCHANGER
 LIMITED WARRANTY*

10 YEAR
 REPLACEMENT
 LIMITED WARRANTY*

10 YEAR
 PARTS
 LIMITED WARRANTY*

* Complete warranty details available from your local dealer or at www.goodmanmfg.com. To receive the Lifetime Heat Exchanger Limited Warranty (good for as long as you own your home), 10-Year Unit Replacement Limited Warranty, and 10-Year Parts Limited Warranty, online registration must be completed within 60 days of installation. Online registration is not required in California or Quebec. The duration of warranty coverages in Texas differs in some cases.

GM9S96 / GC9S96 | SINGLE-STAGE GAS FURNACE

UP TO 96% AFUE | HIGH-EFFICIENCY, MULTI-SPEED ECM

Model	Heating Capacity ¹		AFUE %	Tons A/C ²	Dimensions			Ship Weight (lbs)
	Input	Output			W"	D"	H"	
GM9S960403AN	40,000	38,400	96	3	14"	28 ⁷ / ₈	34 ¹ / ₂	108
GM9S960603BN	60,000	57,600	96	3	17 ¹ / ₂	28 ⁷ / ₈	34 ¹ / ₂	118
GM9S960803BN	80,000	76,800	96	3	17 ¹ / ₂	28 ⁷ / ₈	34 ¹ / ₂	118
GM9S960804CN	80,000	76,800	96	4	21"	28 ⁷ / ₈	34 ¹ / ₂	141
GM9S960805CN	80,000	76,800	96	5	21"	28 ⁷ / ₈	34 ¹ / ₂	142
GM9S961005CN	100,000	96,000	96	5	21"	28 ⁷ / ₈	34 ¹ / ₂	144
GM9S961205DN	120,000	115,200	96	5	24 ¹ / ₂	28 ⁷ / ₈	34 ¹ / ₂	156
GC9S960403BN	40,000	38,440	96	2	17 ¹ / ₂	28 ⁷ / ₈	34 ¹ / ₂	113
GC9S960603BNA	60,000	57,660	96	3	17 ¹ / ₂	28 ⁷ / ₈	34 ¹ / ₂	116
GC9S960804CN	80,000	76,880	96	4	21"	28 ⁷ / ₈	34 ¹ / ₂	141
GC9S961005CN	100,000	95,000	95	5	21"	28 ⁷ / ₈	34 ¹ / ₂	144
GC9S961205DN	120,000	114,000	95	5	24 ¹ / ₂	28 ⁷ / ₈	34 ¹ / ₂	156

¹ BTU/h ² Max tons @ 0.5" ESP

Daikin Comfort Technologies Manufacturing, L.P. reserves the right to discontinue, or change at any time, specifications or designs without notice or without incurring obligations.

Standard Features

- Heavy-duty aluminized-steel tubular heat exchanger
- Stainless-steel secondary heat exchanger
- Single-stage gas valve
- Durable Silicon Nitride igniter
- Quiet single-speed induced draft blower
- Self-diagnostic control board with constant memory fault code history output to a LED
- All models comply with California 40 ng/J Low NOx emissions standard
- Can no longer be installed in California's South Coast Air Quality Management District (SCAQMD) on or after October 1, 2019.
- AHRI Certified; ETL Listed

Cabinet Features

- Designed for multi-position installation —
GM9S96: upflow, horizontal left or right
GC9S96: downflow, horizontal left or right
- Certified for direct vent (2-pipe) or non-direct vent (1-pipe)
- Easy-to-install top venting with optional side venting —
GM9S96/upflow models only
- Convenient left or right connection for gas and electrical service
- Cabinet air leakage (QLeak) ≤ 2%
- Heavy-gauge steel cabinet with durable finish
- Fully insulated heat exchanger and blower section
- Airtight solid bottom or side return with easy-cut tabs for effortless removal in bottom air-inlet applications



LIFETIME
HEAT EXCHANGER
LIMITED WARRANTY*

10 YEAR
UNIT
REPLACEMENT
LIMITED
WARRANTY*

10 YEAR
PARTS
LIMITED
WARRANTY*

* Complete warranty details available from your local dealer or at www.goodmanmfg.com. To receive the Lifetime Heat Exchanger Limited Warranty (good for as long as you own your home), 10-Year Unit Replacement Limited Warranty, and 10-Year Parts Limited Warranty, online registration must be completed within 60 days of installation. Online registration is not required in California or Quebec. The duration of warranty coverages in Texas differs in some cases.

GM9S96-U | ULTRA LOW NOX | SINGLE-STAGE GAS FURNACE

UP TO 96% AFUE | MULTI-SPEED ECM

GAS
FURNACES

Model	Heating Capacity ¹		AFUE %	Tons A/C ²	Dimensions			Ship Weight (lbs)
	Input	Output			W"	D"	H"	
GM9S960403BU	40,000	38,400	96	3	17½	28⅞	34½	115
GM9S960603BU	60,000	57,600	96	3	17½	28⅞	34½	120
GM9S960805BU	80,000	76,800	96	5	21	28⅞	34½	145

¹ BTU/h ² Max tons @ 0.5" ESP

Daikin Comfort Technologies Manufacturing, L.P. reserves the right to discontinue, or change at any time, specifications or designs without notice or without incurring obligations.

Standard Features

- Heavy-duty stainless-steel tubular heat exchanger
- Stainless-steel secondary heat exchanger
- Single-stage gas valve
- Durable Silicon Nitride igniter
- Quiet multi-speed induced draft blower
- Self-diagnostic control board with constant memory fault code history output to a LED
- Eligible for installation in California's South Coast Air Quality Management District (SCAQMD) and San Joaquin Valley Air Pollution Control District (SJVUAPCD). This furnace complies with the 14 ng/J NOx emission limit in SCAQMD Rule 1111 and SJVUAPCD Rule 4905.
- AHRI Certified; ETL Listed

Cabinet Features

- Designed for multi-position installation —GM9S96: upflow, horizontal left or right
- Certified for direct vent (2-pipe) or non-direct vent (1-pipe)
- Easy-to-install top venting with optional side venting — GM9S96/upflow models only
- Convenient left or right connection for gas and electrical service
- Cabinet air leakage (QLeak) ≤ 1.4%
- Heavy-gauge steel cabinet with durable finish
- Fully insulated heat exchanger and blower section
- Airtight solid bottom or side return with easy-cut tabs for effortless removal in bottom air-inlet applications



LIFETIME
HEAT EXCHANGER
LIMITED WARRANTY*

10 YEAR
UNIT
REPLACEMENT
LIMITED WARRANTY*

10 YEAR
PARTS
LIMITED WARRANTY*

* Complete warranty details available from your local dealer or at www.goodmanmfg.com. To receive the Lifetime Heat Exchanger Limited Warranty (good for as long as you own your home), 10-Year Unit Replacement Limited Warranty, and 10-Year Parts Limited Warranty, online registration must be completed within 60 days of installation. Online registration is not required in California or Quebec. The duration of warranty coverages in Texas differs in some cases.

GMVS96-U | ULTRA LOW NOX | VARIABLE-SPEED GAS FURNACE

UP TO 96% AFUE | HIGH-EFFICIENCY, VARIABLE-SPEED ECM



Model	Heating Capacity ¹		AFUE %	Tons A/C ²	Dimensions			Ship Weight (lbs)
	Input	Output			W"	D"	H"	
GMVS960603BUA*	60,000	57,600	96	3	17½"	28⅞"	34½"	122
GMVS960805CUA*	80,000	76,800	96	5	21"	28⅞"	34½"	147

¹ BTU/h ² Max tons @ 0.5" ESP

Daikin Comfort Technologies Manufacturing, L.P. reserves the right to discontinue, or change at any time, specifications or designs without notice or without incurring obligations.

Standard Features

- Integrated communicating ComfortBridge™ Technology Commissioning and diagnostics via indoor board Bluetooth with the CoolCloud™ phone and tablet application
- Heavy-duty stainless-steel tubular heat exchanger
- Super-ferritic Stainless-steel secondary heat exchanger
- Single-stage gas valve
- Durable Silicon Nitride igniter
- Quiet modulating induced draft blower
- Self-diagnostic control board with constant memory fault code history output to 3 x 7 segment display
- Eligible for installation in California's South Coast Air Quality Management District (SCAQMD) and San Joaquin Valley Air Pollution Control District (SJVUAPCD). This furnace complies with the 14 ng/J NOx emission limit in SCAQMD Rule 1111 and SJVUAPCD Rule 4905.
- EMI line filter kit must be installed. (It is intended for field installation only on "VS" model, Bluetooth® capable Ultra Low NOx Gas Furnaces. The purpose of the EMI Filter is to reduce electromagnetic interference between the furnace and other electrical devices)
- AHRI Certified; ETL Listed

Cabinet Features

- Designed for multi-position installation — upflow, horizontal left or right
- Certified for direct vent (2-pipe or non-direct vent (1-pipe))
- Easy-to-install top venting with optional side venting
- Convenient left or right connection for gas and electrical service
- Cabinet air leakage (QLeak) ≤ 1.4%
- Heavy-gauge steel cabinet with durable finish
- Fully insulated heat exchanger and blower section
- Airtight solid bottom or side return with easy-cut tabs for effortless removal in bottom air-inlet applications



LIFETIME
HEAT EXCHANGER
LIMITED WARRANTY*

10 YEAR
REPLACEMENT
LIMITED WARRANTY*

10 YEAR
PARTS
LIMITED WARRANTY*

* Complete warranty details available from your local dealer or at www.goodmanmfg.com. To receive the Lifetime Heat Exchanger Limited Warranty (good for as long as you own your home), 10-Year Unit Replacement Limited Warranty, and 10-Year Parts Limited Warranty, online registration must be completed within 60 days of installation. Online registration is not required in California or Quebec. The duration of warranty coverages in Texas differs in some cases.

GM9S92 | SINGLE-STAGE GAS FURNACE

UP TO 92% AFUE | ENERGY-EFFICIENT, MULTI-SPEED ECM

Model	Heating Capacity ¹		AFUE %	Tons A/C ²	Dimensions			Ship Weight (lbs)
	Input	Output			W"	D"	H"	
GM9S920403A*	40,000	36,840	92	3	14"	28 ⁷ / ₈	34 ¹ / ₂	106
GM9S920603B*	60,000	55,260	92	3	17 ¹ / ₂	28 ⁷ / ₈	34 ¹ / ₂	114
GM9S920803B*	80,000	73,680	92	3	17 ¹ / ₂	28 ⁷ / ₈	34 ¹ / ₂	117
GM9S920804C*	80,000	73,680	92	4	21"	28 ⁷ / ₈	34 ¹ / ₂	139
GM9S920805C*	80,000	73,680	92	5	21"	28 ⁷ / ₈	34 ¹ / ₂	140
GM9S921004C*	100,000	92,100	92	4	21"	28 ⁷ / ₈	34 ¹ / ₂	141
GM9S921005C*	100,000	92,100	92	5	21"	28 ⁷ / ₈	34 ¹ / ₂	142
GM9S921205D*	120,000	110,520	92	5	24 ¹ / ₂	28 ⁷ / ₈	34 ¹ / ₂	154

¹ BTU/h ² Max tons @ 0.5" ESP

Daikin Comfort Technologies Manufacturing, L.P. reserves the right to discontinue, or change at any time, specifications or designs without notice or without incurring obligations.

Standard Features

- Heavy-duty aluminized-steel tubular heat exchanger
- Stainless-steel secondary heat exchanger
- Single-stage gas valve
- Durable Silicon Nitride igniter
- Multi-speed ECM blower motor
- Quiet single-speed induced draft blower
- Self-diagnostic control board
- All models comply with California 40 ng/J Low NOx emissions standard
- Can no longer be installed in California's South Coast Air Quality Management District (SCAQMD) on or after October 1, 2019.
- AHRI Certified; ETL Listed

Cabinet Features

- Designed for multi-position installation — GM9S92: upflow, horizontal left or right
- Certified for direct vent (2-pipe) or non-direct vent (1-pipe)
- Easy-to-install top venting with optional side venting — GM9S92: upflow models only
- Convenient left or right connection for gas and electrical service
- Cabinet air leakage (QLeak) ≤ 2%
- Heavy-gauge steel cabinet with durable finish
- Foil-faced insulated heat exchanger cabinet
- Airtight solid bottom or side return with easy-cut tabs for effortless removal in bottom air-inlet applications



LIFETIME
HEAT EXCHANGER
LIMITED WARRANTY*

10 YEAR
PARTS
LIMITED
WARRANTY*

* Complete warranty details available from your local dealer or at www.goodmanmfg.com. To receive the Lifetime Heat Exchanger Limited Warranty (good for as long as you own your home), and 10-Year Parts Limited Warranty, online registration must be completed within 60 days of installation. Online registration is not required in California or Quebec. The duration of warranty coverages in Texas differs in some cases.

GMVC80 / GCVC80 | TWO-STAGE GAS FURNACE

80% AFUE | ENERGY-EFFICIENT, VARIABLE-SPEED



Model	High-Fire Heating ¹		Low-Fire Heating ¹		AFUE %	Tons A/C ²	Dimensions			Ship Weight (lbs)
	Input	Output	Input	Output			W"	D"	H"	
GMVC800603B*A	60,000	48,000	42,000	33,600	80	1½-3	17½	28	33⅝	105
GMVC800604B*A	60,000	48,000	42,000	33,600	80	1½-4	17½	28	33⅝	107
GMVC800803B*A	80,000	64,000	56,000	44,800	80	1½-3	17½	28	33⅝	110
GMVC800804C*A	80,000	64,000	56,000	44,800	80	3-4	21	28	33⅝	118
GMVC800805C*A	80,000	64,000	56,000	44,800	80	2-5	21	28	33⅝	121
GMVC800805D*A	80,000	64,000	56,000	44,800	80	2½-5	24½	28	33⅝	129
GMVC801005C*A	100,000	80,000	70,000	56,000	80	2-5	21	28	33⅝	124
GCVC800603B*A	60,000	48,000	42,000	33,600	80	1½-3	17½	28	33⅝	105
GCVC800803B*A	80,000	64,000	56,000	44,800	80	1½-3	17½	28	33⅝	109
GCVC800805C*A	80,000	64,000	56,000	44,800	80	2-5	21	28	33⅝	125
GCVC801005C*A	100,000	80,000	70,000	56,000	80	2-5	21	28	33⅝	129

¹ BTU/h ² Max tons @ 0.5" ESP

Daikin Comfort Technologies Manufacturing, L.P. reserves the right to discontinue, or change at any time, specifications or designs without notice or without incurring obligations.

Standard Features

- Integrated communicating ComfortBridge™ technology
- Two-stage gas valve provides quiet, economical heating
- Commissioning and diagnostics via on board Bluetooth with the CoolCloud™ phone and tablet application
- Efficient and quiet variable-speed ECM circulator motor gently ramps up or down according to heating or cooling demand
- SureStart® Silicon Nitride igniter designed for long igniter life
- Self-diagnostic control board with constant memory fault code history output to a triple 7-segment display
- Low constant fan speed circulates air throughout the home
- Quiet, two-speed induced draft blower
- California Low NO_x emissions-compliant models available
- Can no longer be installed in California's South Coast Air Quality Management District (SCAQMD) on or after October 1, 2019.
- AHRI Certified; ETL Listed

Cabinet Features

- Fully insulated, heavy-gauge steel cabinet with durable baked-enamel finish
- Multi-position installation: GMVC80: upflow, horizontal left or right GCVC80: downflow, horizontal left or right
- Removable bottom for side- or bottom-return applications
- Convenient left or right connection for gas/electric service
- Cabinet air leakage ≤ 2%
- Coil and furnace fit flush for most installations



LIFETIME
HEAT EXCHANGER
LIMITED WARRANTY*

10 YEAR
REPLACEMENT
LIMITED WARRANTY*

10 YEAR
PARTS
LIMITED WARRANTY*

* Complete warranty details available from your local dealer or at www.goodmanmfg.com. To receive the Lifetime Heat Exchanger Limited Warranty (good for as long as you own your home), 10-Year Unit Replacement Limited Warranty, and 10-Year Parts Limited Warranty, online registration must be completed within 60 days of installation. Online registration is not required in California or Quebec. The duration of warranty coverages in Texas differs in some cases.

GM9C80 / GC9C80 | TWO-STAGE GAS FURNACE

80% AFUE | ENERGY-EFFICIENT, 9-SPEED ECM

Model	High-Fire Heating ¹		Low-Fire Heating ¹		AFUE %	Tons A/C ²	Dimensions			Ship Weight (lbs)
	Input	Output	Input	Output			W"	D"	H"	
GM9C800403A*	40,000	32,000	28,000	22,400	80	3	14	28	33 ³ / ₈	105
GM9C800603B*	60,000	48,000	42,000	33,600	80	3	17 ¹ / ₂	28	33 ³ / ₈	107
GM9C800803B*	80,000	64,000	56,000	44,800	80	3	17 ¹ / ₂	28	33 ³ / ₈	118
GM9C800804B*	80,000	64,000	56,000	44,800	80	4	17 ¹ / ₂	28	33 ³ / ₈	121
GM9C800804C*	80,000	64,000	56,000	44,800	80	4	21	28	33 ³ / ₈	129
GM9C800805C*	80,000	64,000	56,000	44,800	80	5	21	28	33 ³ / ₈	129
GM9C800805DX	80,000	64,000	56,000	44,800	80	5	24 ¹ / ₂	28	33 ³ / ₈	129
GM9C801004CN	100,000	80,000	70,000	56,000	80	4	21	28	33 ³ / ₈	124
GM9C801005C*	100,000	80,000	70,000	56,000	80	5	21	28	33 ³ / ₈	124
GM9C801205D*	120,000	96,000	84,000	67,200	80	5	24 ¹ / ₂	28	33 ³ / ₈	124
GC9C800403AX	40,000	32,000	28,000	22,400	80	3	14	28	33 ³ / ₈	105
GC9C800603AX	60,000	48,000	42,000	33,600	80	3	14	28	33 ³ / ₈	107
GC9C800603BX	60,000	48,000	42,000	33,600	80	3	17 ¹ / ₂	28	33 ³ / ₈	107
GC9C800804BX	80,000	64,000	56,000	44,800	80	4	17 ¹ / ₂	28	33 ³ / ₈	121
GC9C800805CX	80,000	64,000	56,000	44,800	80	5	21	28	33 ³ / ₈	129
GC9C801005CX	100,000	80,000	70,000	56,000	80	5	21	28	33 ³ / ₈	124

¹ BTU/h ² Max tons @ 0.5" ESP

Daikin Comfort Technologies Manufacturing, L.P. reserves the right to discontinue, or change at any time, specifications or designs without notice or without incurring obligations.

Standard Features

- Two-stage gas valve provides quiet, economical heating
- Efficient and quiet multi-speed ECM circulator motor
- SureStart® Silicon Nitride igniter designed for long igniter life
- Self-diagnostic control board
- Low constant fan speed circulates air throughout the home
- Quiet, two-speed induced draft blower
- California Low NOx emissions-compliant models available
- Can no longer be installed in California's South Coast Air Quality Management District (SCAQMD) on or after October 1, 2019.
- AHRI Certified; ETL Listed

Cabinet Features

- Fully insulated, heavy-gauge steel cabinet with durable baked-enamel finish
- Multi-position installation: GM9C80: upflow, horizontal left or right GC9C80: downflow, horizontal left or right
- Removable bottom for side- or bottom-return applications
- Convenient left or right connection for gas/electric service
- Cabinet air leakage ≤ 2%
- Coil and furnace fit flush for most installations


LIFETIME
HEAT EXCHANGER
LIMITED WARRANTY*

10 YEAR
UNIT REPLACEMENT
LIMITED WARRANTY*

10 YEAR
PARTS
LIMITED WARRANTY*

* Complete warranty details available from your local dealer or at www.goodmanmfg.com. To receive the Lifetime Heat Exchanger Limited Warranty (good for as long as you own your home), 10-Year Unit Replacement Limited Warranty, and 10-Year Parts Limited Warranty, online registration must be completed within 60 days of installation. Online registration is not required in California or Quebec. The duration of warranty coverages in Texas differs in some cases.

GM9S80 / GC9S80 | SINGLE-STAGE GAS FURNACE

80% AFUE | ENERGY-EFFICIENT, MULTI-SPEED ECM

Model	Heating Capacity ¹		AFUE %	Tons A/C ²	Dimensions			Ship Weight (lbs)
	Input	Output			W"	D"	H"	
GM9S800403A*	40,000	32,000	80%	3	14	28	33 ³ / ₈	86
GM9S800603A*	60,000	48,000	80%	3	14	28	33 ³ / ₈	90
GM9S800603B*	60,000	48,000	80%	3	17 ¹ / ₂	28	33 ³ / ₈	100
GM9S800604B*	60,000	48,000	80%	4	17 ¹ / ₂	28	33 ³ / ₈	108
GM9S800803B*	80,000	64,000	80%	3	17 ¹ / ₂	28	33 ³ / ₈	116
GM9S800804B*	80,000	64,000	80%	4	17 ¹ / ₂	28	33 ³ / ₈	120
GM9S800804C*	80,000	64,000	80%	4	21	28	33 ³ / ₈	132
GM9S800805C*	80,000	64,000	80%	5	21	28	33 ³ / ₈	132
GM9S801005C*	100,000	80,000	80%	5	21	28	33 ³ / ₈	132
GM9S801205D*	120,000	96,000	80%	5	24 ¹ / ₂	28	33 ³ / ₈	132
GC9S800403A*	40,000	32,000	80%	3	14	28	33 ³ / ₈	90
GC9S800603A*	60,000	48,000	80%	3	14	28	33 ³ / ₈	94
GC9S800804B*	60,000	48,000	80%	4	17 ¹ / ₂	28	33 ³ / ₈	107
GC9S800805C*	80,000	64,000	80%	5	21	28	33 ³ / ₈	115
GC9S801005C*	100,000	80,000	80%	5	21	28	33 ³ / ₈	115

¹ BTU/h ² Max tons @ 0.5" ESP

Daikin Comfort Technologies Manufacturing, L.P. reserves the right to discontinue, or change at any time, specifications or designs without notice or without incurring obligations.

Standard Features

- Heavy-duty aluminized-steel, dual-diameter tubular heat exchanger
- Single-stage gas valve
- Durable Hot-surface igniter
- Quiet, single-speed draft induced
- Self-diagnostic control board
- Color-coded low-voltage terminals
- Multi-speed ECM blower motor
- California Low NOx emissions models available
- Can no longer be installed in California's South Coast Air Quality Management District (SCAQMD) on or after October 1, 2019.
- AHRI Certified; ETL Listed

Cabinet Features

- Installation:
 - GM9S80 -upflow, horizontal left or right
 - GC9S80- downflow, horizontal left or right
- Convenient left or right connection for gas and electrical service
- Heavy-gauge steel cabinet with durable baked-enamel finish
- Foil faced insulated heat exchanger



LIFETIME
HEAT EXCHANGER
LIMITED WARRANTY*

10 PARTS
YEAR LIMITED
WARRANTY*

* Complete warranty details available from your local dealer or at www.goodmanmfg.com. To receive the Lifetime Heat Exchanger Limited Warranty (good for as long as you own your home), and 10-Year Parts Limited Warranty, online registration must be completed within 60 days of installation. Online registration is not required in California or Quebec. The duration of warranty coverages in Texas differs in some cases.

GM9S80-U | ULTRA LOW NOX | SINGLE-STAGE GAS FURNACE

80% AFUE | ENERGY-EFFICIENT, MULTI-SPEED ECM

Model	Heating Capacity ¹		AFUE %	Tons A/C ²	Dimensions			Ship Weight (lbs)
	Input	Output			W"	D"	H"	
GM9S800403AU*	40,000	32,000	80%	3	14	28	33 ³ / ₈	86
GM9S800603AU*	60,000	48,000	80%	3	14	28	33 ³ / ₈	90
GM9S800604BU*	60,000	48,000	80%	4	17 ¹ / ₂	28	33 ³ / ₈	100
GM9S800804BU*	80,000	64,000	80%	4	17 ¹ / ₂	28	33 ³ / ₈	108
GM9S800805CU*	80,000	64,000	80%	5	21	28	33 ³ / ₈	116

¹ BTU/h ² Max tons @ 0.5" ESP

Daikin Comfort Technologies Manufacturing, L.P. reserves the right to discontinue, or change at any time, specifications or designs without notice or without incurring obligations.

Standard Features

- Heavy-duty stainless-steel dual-diameter tubular heat exchanger
- Single-stage gas valve
- Durable Hot-surface igniter
- Quiet, modulating draft inducer
- Self-diagnostic control board
- Multi-speed ECM blower motor
- Eligible for installation in California's South Coast Air Quality Management District (SCAQMD) and San Joaquin Valley Air Pollution Control District (SJVUAPCD). This furnace complies with the 14 ng/J NOx emission limit in SCAQMD Rule 1111 and SJVUAPCD Rule 4905.
- AHRI Certified; ETL Listed

Cabinet Features

- Installation: upflow, horizontal left or right
- Convenient left or right connection for gas and electrical service
- Heavy-gauge steel cabinet with durable baked-enamel finish
- Foil faced insulated heat exchanger



LIFETIME
HEAT EXCHANGER
LIMITED WARRANTY*

10 YEAR
PARTS
LIMITED
WARRANTY*

* Complete warranty details available from your local dealer or at www.goodmanmfg.com. To receive the Lifetime Heat Exchanger Limited Warranty (good for as long as you own your home), and 10-Year Parts Limited Warranty, online registration must be completed within 60 days of installation. Online registration is not required in California or Quebec. The duration of warranty coverages in Texas differs in some cases.

GMVS80-U | ULTRA LOW NOX | SINGLE-STAGE GAS FURNACE

80% AFUE | ENERGY-EFFICIENT, VARIABLE-SPEED ECM



Model	Heating Capacity ¹		AFUE %	Tons A/C ²	Dimensions			Ship Weight (lbs)
	Input	Output			W"	D"	H"	
GMVS800604BUA*	60,000	48,000	80	1½ to 4	17½	28	33¾	112
GMVS800805CUA*	80,000	64,000	80	2 to 5	21	28	33¾	127

¹ BTU/h ² Max tons @ 0.5" ESP

Daikin Comfort Technologies Manufacturing, L.P. reserves the right to discontinue, or change at any time, specifications or designs without notice or without incurring obligations.

Standard Features

- Integrated communicating ComfortBridge™ Technology
- Commissioning and diagnostics via indoor board Bluetooth with the CoolCloud™ phone and tablet application
- Heavy-duty stainless-steel dual diameter tubular heat exchanger
- Single-stage gas valve
- Durable Hot-surface igniter
- Quiet, modulating draft inducer
- Self-diagnostic control board
- Variable-speed ECM blower motor
- Eligible for installation in California's South Coast Air Quality Management District (SCAQMD) and San Joaquin Valley Air Pollution Control District (SJVUAPCD). This furnace complies with the 14 ng/J NOx emission limit in SCAQMD Rule 1111 and SJVUAPCD Rule 4905.
- EMI line filter kit must be installed. (It is intended for field installation only on "VS" model, Bluetooth® capable Ultra Low NOx Gas Furnaces. The purpose of the EMI Filter is to reduce electromagnetic interference between the furnace and other electrical devices)
- AHRI Certified; ETL Listed

Cabinet Features

- Installation: upflow, horizontal left or right
- Convenient left or right connection for gas and electrical service
- Heavy-gauge steel cabinet with durable baked-enamel finish
- Foil faced insulated heat exchanger



LIFETIME
HEAT EXCHANGER
LIMITED WARRANTY*

10 YEAR PARTS
LIMITED
WARRANTY*

10 YEAR UNIT
REPLACEMENT
LIMITED
WARRANTY*

* Complete warranty details available from your local dealer or at www.goodmanmfg.com. To receive the Lifetime Heat Exchanger Limited Warranty (good for as long as you own your home), 2-Year Unit Replacement Limited Warranty and 10-Year Parts Limited Warranty, online registration must be completed within 60 days of installation. Online registration is not required in California or Quebec. The duration of warranty coverages in Texas differs in some cases.

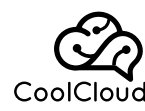


AIR HANDLERS & EVAPORATOR COILS



AMVE | AIR HANDLER

VARIABLE-SPEED | COMFORTBRIDGE™ CONTROLLER-COMPATIBLE | MULTI-POSITION



Model	Cooling (Tons)	Voltage	Dimensions			Service Valve		Ship Weight (lbs)
			W"	D"	H"	Liquid"	Suction"	
AMVE24BP1400	24,000	208/230	17½	21	53⅞	¾"	¾"	115
AMVE36CP1400	36,000	208/230	21	21	53⅞	¾"	7/8"	140
AMVE48DP1400	48,000	208/230	24½	21	53⅞	¾"	7/8"	150
AMVE60DP1400	60,000	208/230	24½	21	58	¾"	7/8"	167

Daikin Comfort Technologies Manufacturing, L.P. reserves the right to discontinue, or change at any time, specifications or designs without notice or without incurring obligations.

Standard Features

- Electronic Expansion Valve (EEV) for cooling and heat pump applications.
- Variable-speed ECM blower motor
- Suitable for operation with inverter-driven products
- Integrated communicating ComfortBridge™ Technology
- Commissioning and diagnostics via on board Bluetooth with the CoolCloud™ phone and tablet application
- Provides constant CFM over a wide range of static pressure conditions independent of duct system
- CFM indicator
- Provides adjustable low CFM for efficient fan-only operation
- All-aluminum evaporator coil
- Fault recall of six most recent faults
- Improved humidity and comfort control
- 3 kW – 25 kW electric heater kits
- AHRI certified; ETL listed

Cabinet Features

- Cabinet air leakage less than 2.0% at 1.0 inch H₂O when tested in accordance with ASHRAE standard 193
- Cabinet air leakage less than 1.4% at 0.5 inch H₂O when tested in accordance with ASHRAE standard 193
- Horizontal or vertical configuration capabilities
- 21" depth for easier attic access
- DecaBDE-free thermoplastic drain pan with secondary drain connections
- Screw-less sides and back helps to reduce condensation when installed in humid locations
- Foil-faced insulation covers the internal casing to reduce cabinet condensation
- Galvanized, leather grain-embossed finish
- Glue-less cabinet insulation retention
- Tool-less filter access



10 YEAR PARTS LIMITED WARRANTY*

* Complete warranty details available from you local dealer or at www.goodmanmfg.com. To receive the 10-Year Parts Limited Warranty, online registration must be completed within 60 days of installation. Online registration is not required in California or Quebec. The duration of warranty coverages in Texas differs in some cases.



AMVT | AIR HANDLER

MULTI-POSITION | VARIABLE-SPEED | HIGH-EFFICIENCY

AIR
HANDLERS

Model	Cooling (Tons)	Voltage	Dimensions			Service Valve		Ship Weight (lbs)
			W"	D"	H"	Liquid"	Suction"	
AMVT24BP1400	1½	208/230-1	17½	21	45	¾"	¾"	129
AMVT30BP1400	2	208/230-1	17½	21	53 1/2	¾"	7/8"	129
AMVT36BP1400	2½	208/230-1	17½	21	49	¾"	7/8"	129
AMVT36CP1400	3	208/230-1	21	21	45	¾"	¾"	153
AMVT42CP1400	3½	208/230-1	21	21	53 1/2	¾"	7/8"	153
AMVT48CP1400	4	208/230-1	21	21	53 1/2	¾"	7/8"	153
AMVT48DP1400	4	208/230-1	24½	21	49	¾"	7/8"	155
AMVT60DP1400	5	208/230-1	24½	21	53 1/2	¾"	7/8"	167

Daikin Comfort Technologies Manufacturing, L.P. reserves the right to discontinue, or change at any time, specifications or designs without notice or without incurring obligations.

Standard Features

- Internal factory-installed thermal expansion valves for cooling and heat pump applications
- Variable-speed ECM blower motor
- Integrated communicating ComfortBridge™ Technology
- Commissioning and diagnostics via on board Bluetooth with the CoolCloud™ phone and tablet application
- Auto configuration of the airflow and tonnage in communicating mode
- Provides constant CFM over a wide range of static pressure conditions independent of duct system
- CFM indicator
- Fault recall of six most recent faults
- Provides adjustable low CFM for efficient fan-only operation
- Improved humidity and comfort control
- Built-in compatibility with multi-stage heat pump and cooling applications
- All-aluminum evaporator coil
- AHRI certified; ETL listed

Cabinet Features

- Rigid SmartFrame™ cabinet
- Cabinet air leakage less than 2.0% at 1.0 inch H₂O when tested in accordance with ASHRAE standard 193
- Cabinet air leakage less than 1.4% at 0.5 inch H₂O when tested in accordance with ASHRAE standard 193
- Horizontal or vertical configuration capabilities
- 21" depth for easier attic access
- DecaBDE-free thermoplastic drain pan with secondary drain connections
- Screw-less sides and back helps to reduce condensation when installed in humid locations
- Foil-faced insulation covers the internal casing to reduce cabinet condensation
- Galvanized, leather grain-embossed finish
- Glue-less cabinet insulation retention
- Tool-less filter access
- Field Installed 3 kW–25 kW electric heater kits available



**10 PARTS
YEAR LIMITED
WARRANTY**

* Complete warranty details available from you local dealer or at www.goodmanmfg.com. To receive the 10-Year Parts Limited Warranty, online registration must be completed within 60 days of installation. Online registration is not required in California or Quebec. The duration of warranty coverages in Texas differs in some cases.

AMST | AIR HANDLER

MULTI-SPEED | ECM BASED, WITH INTERNAL TXV | MULTI-POSITION

Model	Cooling (Tons)	Voltage	Dimensions			Service Valve		Ship Weight (lbs)
			W"	D"	H"	Liquid"	Suction"	
AMST24BU1400	1½	208/230-1	17½	21	45	¾"	¾"	112
AMST30BU1400	2	208/230-1	17½	21	53 1/2	¾"	¾"	129
AMST36BU1400	2½	208/230-1	17½	21	49	¾"	¾"	129
AMST36CU1400	3	208/230-1	21	21	45	¾"	¾"	153
AMST42CU1400	3½	208/230-1	21	21	53 1/2	¾"	7/8"	153
AMST48CU1400	4	208/230-1	21	21	53 1/2	¾"	7/8"	153
AMST48DU1400	4	208/230-1	24½	21	49	¾"	7/8"	155
AMST60DU1400	5	208/230-1	24½	21	53 1/2	¾"	7/8"	167

Daikin Comfort Technologies Manufacturing, L.P. reserves the right to discontinue, or change at any time, specifications or designs without notice or without incurring obligations.

Standard Features

- Internal factory-installed thermal expansion valves for cooling and heat pump applications
- Direct drive, multi-speed ECM blower motor
- All-aluminum evaporator coil
- Coil mounting track for quick repositioning
- Optimized for use with R-410A refrigerant
- Cabinet air leakage less than 2.0% at 1.0 inch H₂O when tested in accordance with ASHRAE standard 193
- Cabinet air leakage less than 1.4% at 0.5 inch H₂O when tested in accordance with ASHRAE standard 193
- AHRI certified; ETL listed

Cabinet Features

- Rigid SmartFrame™ cabinet
- Horizontal or vertical configuration capabilities
- 21" depth for easier attic access
- DecaBDE-free thermoplastic drain pan with secondary drain connections
- Screw-less sides and back helps to reduce condensation when installed in humid locations
- Foil-faced insulation covers the internal casing to reduce cabinet condensation
- Galvanized, leather grain-embossed finish
- Glue-less cabinet insulation retention
- Tool-less filter access
- Field Installed 3 kW – 25 kW electric heater kits available



10 YEAR PARTS LIMITED WARRANTY*

* Complete warranty details available from you local dealer or at www.goodmanmfg.com. To receive the 10-Year Parts Limited Warranty, online registration must be completed within 60 days of installation. Online registration is not required in California or Quebec. The duration of warranty coverages in Texas differs in some cases.

Model	Voltage	Dimensions			Ship Weight (lbs)
		W"	D"	H"	
MBVC1201AA-1	208/230-1	17½	21	26	67
MBVC1601AA-1	208/230-1	21	21	30	80
MBVC2001AA-1	208/230-1	24½	21	30	86

Daikin Comfort Technologies Manufacturing, L.P. reserves the right to discontinue, or change at any time, specifications or designs without notice or without incurring obligations.

Standard Features

- Variable-speed ECM blower motor
- Integrated communicating ComfortBridge[™] Technology
- Commissioning and diagnostics via on board Bluetooth with the CoolCloud[™] phone and tablet application
- Advanced configuration of the airflow and tonnage in communicating mode
- Provides constant CFM over a wide range of static pressure conditions independent of duct system
- CFM indicator
- Fault recall of six most recent faults
- Provides adjustable low CFM for efficient fan-only operation
- Improved humidity and comfort control
- Built-in compatibility with multi-stage heat pump and cooling applications
- Blower section usable as electric heater
- AHRI certified; ETL listed

Cabinet Features

- Horizontal or vertical configuration capabilities
- 21" depth for easier attic access
- Foil-faced insulation covers the internal casing to reduce cabinet condensation
- Galvanized, leather grain-embossed finish
- Cabinet air leakage less than 2% at 1.0 inch H₂O when tested in accordance with ASHRE standard 193
- Cabinet air leakage less than 1.4% at 0.5 inch H₂O when tested in accordance with ASHRE standard 193
- Field installed 3 kW–25 kW electric heater kits available



10 YEAR PARTS LIMITED WARRANTY

* Complete warranty details available from you local dealer or at www.goodmanmfg.com. To receive the 10-Year Parts Limited Warranty, online registration must be completed within 60 days of installation. Online registration is not required in California or Quebec. The duration of warranty coverages in Texas differs in some cases.

AWST | AIR HANDLER



WALL-MOUNT

Model	Cooling (Tons)	Electric Heat	Voltage	Dimensions			Connection Size		Ship Weight (lbs)
				W"	D"	H"	Liquid"	Suction"	
AWST18SU1403	1½	3	208/230-1	20 ³ / ₁₆	16 ¹ / ₈	36	3/8	5/8	84
AWST18SU1405	1½	5	208/230-1	20 ³ / ₁₆	16 ¹ / ₈	36	3/8	5/8	84
AWST18SU1408	1½	8	208/230-1	20 ³ / ₁₆	16 ¹ / ₈	36	3/8	5/8	84
AWST24SU1405	2	5	208/230-1	20 ³ / ₁₆	16 ¹ / ₈	36	3/8	5/8	84
AWST24SU1408	2	8	208/230-1	20 ³ / ₁₆	16 ¹ / ₈	36	3/8	5/8	84
AWST24SU1410	2	10	208/230-1	20 ³ / ₁₆	16 ¹ / ₈	36	3/8	5/8	84
AWST30LU1405	2½	5	208/230-1	24	21	36	3/8	3/4	109
AWST30LU1408	2½	8	208/230-1	24	21	36	3/8	3/4	109
AWST30LU1410	2½	10	208/230-1	24	21	36	3/8	3/4	109
AWST36LU1405	3	5	208/230-1	24	21	36	3/8	3/4	109
AWST36LU1408	3	8	208/230-1	24	21	36	3/8	3/4	109
AWST36LU1410	3	10	208/230-1	24	21	36	3/8	3/4	109

Daikin Comfort Technologies Manufacturing, L.P. reserves the right to discontinue, or change at any time, specifications or designs without notice or without incurring obligations.

Standard Features

- AWST Models: Equipped with a fully adjustable TXV
- Direct-drive, multi-speed motors allows air volume variation for heating/cooling
- Sequence-controlled, rust-resistant nickel chromium heating elements of 3, 5, 8, and 10 kW
- Aluminum tubing coils on all models
- Cabinet air leakage less than 2.0% at 1.0 inch H₂O when tested in accordance with ASHRAE standard 193

Cabinet Features

- Cabinet air leakage less than 1.4% at 0.5 inch H₂O when tested in accordance with ASHRAE standard 193
- Factory-installed pull-type disconnect
- Thermoplastic drain pan with bottom primary and secondary drain connections
- Built-in filter rack (filter included)
- Large chassis (2½- and 3-ton units) – front return only
- Small chassis (1½- and 2-ton units) – front or bottom return
- Wall-hanging bracket provided
- AHRI Certified; ETL Listed



10 YEAR PARTS LIMITED WARRANTY

* Complete warranty details available from you local dealer or at www.goodmanmfg.com. To receive the 10-Year Parts Limited Warranty, online registration must be completed within 60 days of installation. Online registration is not required in California or Quebec. The duration of warranty coverages in Texas differs in some cases.



AWSF | AIR HANDLER

WALL MOUNT

AIR
HANDLERS

Model	Cooling (Tons)	Electric Heat (kW)	Voltage	Dimensions			Service Valve		Ship Weight (lbs)
				W"	D"	H"	Liquid"	Suction"	
AWSF18SU1605	1½	5	208/230	20¾ ₁₆	16⅞	36	¾	⅝	84
AWSF18SU1608	1½	8	208/230	20¾ ₁₆	16⅞	36	¾	⅝	84
AWSF24SU1605	2	5	208/230	20¾ ₁₆	16⅞	36	¾	⅝	84
AWSF24SU1608	2	8	208/230	20¾ ₁₆	16⅞	36	¾	⅝	84
AWSF24SU1610	2	10	208/230	20¾ ₁₆	16⅞	36	¾	⅝	84
AWSF30LU1605	2½	5	208/230	24	21	36	¾	¾	109
AWSF30LU1608	2½	8	208/230	24	21	36	¾	¾	109
AWSF30LU1610	2½	10	208/230	24	21	36	¾	¾	109
AWSF36LU1605	3	5	208/230	24	21	36	¾	¾	109
AWSF36LU1608	3	8	208/230	24	21	36	¾	¾	109
AWSF36LU1610	3	10	208/230	24	21	36	¾	¾	109

Daikin Comfort Technologies Manufacturing, L.P. reserves the right to discontinue, or change at any time, specifications or designs without notice or without incurring obligations.

Standard Features

- AWSF Models: Equipped with a Check Flowrator
- Direct-drive, multi-speed motors allows air volume variation for heating/cooling
- Sequence-controlled, rust-resistant nickel chromium heating elements of 5, 8, and 10 kW
- Aluminum tubing coils on all models
- Cabinet air leakage less than 2.0% at 1.0 inch H₂O when tested in accordance with ASHRAE standard 193

Cabinet Features

- Cabinet air leakage less than 1.4% at 0.5 inch H₂O when tested in accordance with ASHRAE standard 193
- Factory-installed pull-type disconnect
- Thermoplastic drain pan with bottom primary and secondary drain connections
- Built-in filter rack (filter included)
- Large chassis (2½- and 3-ton units) – front return only
- Small chassis (1½- and 2-ton units) – front or bottom return
- Wall-hanging bracket provided
- AHRI Certified; ETL Listed



10 YEAR PARTS LIMITED WARRANTY*

* Complete warranty details available from you local dealer or at www.goodmanmfg.com. To receive the 10-Year Parts Limited Warranty, online registration must be completed within 60 days of installation. Online registration is not required in California or Quebec. The duration of warranty coverages in Texas differs in some cases.

ACSF | AIR HANDLER



CEILING MOUNT

Model	Cooling Capacity (Tons)	Electric Heat (kW)	Voltage (VAC)	Dimensions			Service Valve		Ship Weight (lbs)
				W"	D"	H"	Liquid"	Suction"	
ACSF18MN1605AA	1½	5	208/230	43¼	21	10	¾	¾	69
ACSF18MN1608AA	1½	8	208/230	43¼	21	10	¾	¾	69
ACSF24LN1605AA	2	5	208/230	49¼	21	10	¾	¾	79
ACSF24LN1606AA	2	6	208/230	49¼	21	10	¾	¾	79
ACSF24LN1608AA	2	8	208/230	49¼	21	10	¾	¾	79
ACSF24LN1610AA	2	10	208/230	49¼	21	10	¾	¾	79
ACSF30LN1605AA	2½	5	208/230	49¼	21	10	¾	¾	79
ACSF30LN1606AA	2½	6	208/230	49¼	21	10	¾	¾	79
ACSF30LN1608AA	2½	8	208/230	49¼	21	10	¾	¾	79
ACSF30LN1610AA	2½	10	208/230	49¼	21	10	¾	¾	79

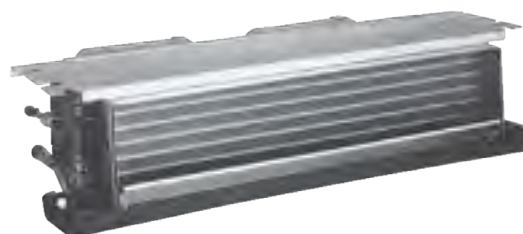
Daikin Comfort Technologies Manufacturing, L.P. reserves the right to discontinue, or change at any time, specifications or designs without notice or without incurring obligations.

Standard Features

- All-Aluminum tube/aluminum fin coil
- Direct-drive, resilient-mount, multi-speed motor
- Available without heat or with sequence-controlled and rust-resistant nickel chromium heating elements of 5, 6, 8 or 10 kW
- High-efficiency evaporator coil
- Quiet operation

Cabinet Features

- AHRI Certified; ETL Listed
- Primary/secondary drain connection in a high-temperature plastic drain pan
- Suitable for free-return installation (non-ducted return air)
- Galvanized-steel construction
- Factory-installed pull-type disconnect
- Easy service access



10 YEAR PARTS LIMITED WARRANTY

* Complete warranty details available from you local dealer or at www.goodmanmfg.com. To receive the 10-Year Parts Limited Warranty, online registration must be completed within 60 days of installation. Online registration is not required in California or Quebec. The duration of warranty coverages in Texas differs in some cases.



CAPTA | EVAPORATOR COIL

PAINTED CASED | INTERNAL TXV | UPFLOW / DOWNFLOW

EVAPORATOR
COILS

Model	Dimensions			Nominal Tons	Connection		Ship Weight (lbs)
	W"	D"	H"		Liquid"	Suction"	
CAPTA1818A4	14"	21"	18"	1½	¾	¾	36
CAPTA1818B4	17.5"	21"	18"	1½	¾	¾	41
CAPTA2422A4	14"	21"	22"	2	¾	¾	44
CAPTA2422B4	17.5"	21"	22"	2	¾	¾	48
CAPTA2422C4	21"	21"	22"	2	¾	¾	53
CAPTA3022A4	14"	21"	22"	2½	¾	¾	44
CAPTA3022B4	17.5"	21"	22"	2½	¾	¾	48
CAPTA3022C4	21"	21"	22"	2½	¾	¾	53
CAPTA3026B4	17.5"	21"	26"	2½	¾	7/8	50
CAPTA3026C4	21"	21"	26"	2½	¾	7/8	52
CAPTA3626B4	17.5"	21"	26"	3	¾	7/8	54
CAPTA3626C4	21"	21"	26"	3	¾	7/8	57
CAPTA4230C4	21"	21"	30"	3½	¾	7/8	63
CAPTA4230D4	24.5"	21"	30"	3½	¾	7/8	66

Daikin Comfort Technologies Manufacturing, L.P. reserves the right to discontinue, or change at any time, specifications or designs without notice or without incurring obligations.

Standard Features

- All-Aluminum evaporator coil
- Optimized for use with R-410A refrigerant
- CAPTA models feature factory-installed thermal expansion valves for cooling and heat pump applications
- Check flowrator for cooling and heat pump applications
- AHRI certified; ETL listed

Cabinet Features

- 21" depth for easier attic access
- Single front access panel
- Foil-faced insulation covers the internal casing to reduce cabinet condensation
- Galvanized, leather grain-embossed finish
- Rust resistant, thermoplastic drain pans featuring a low water-retention design
- DecaBDE-free thermoplastic drain pan with secondary drain connections
- UV-resistant drain pan



10 YEAR PARTS LIMITED WARRANTY*

* Complete warranty details available from your local dealer or at www.goodmanmfg.com. To receive the 10-Year Parts Limited Warranty, online registration must be completed within 60 days of installation. Online registration is not required in California or Quebec. The duration of warranty coverages in Texas differs in some cases.

CAPT | EVAPORATOR COIL



PAINTED CASED | WITH TXV OPTION | UPFLOW / DOWNFLOW

Model	Dimensions			Nominal (Tons)	Connection		Ship Weight (lbs)
	W"	D"	H"		Liquid"	Suction"	
CAPT4961C4*	21	21	30	4-5	3/8	7/8	73
CAPT4961D4*	24 1/2	21	30	4-5	3/8	7/8	76

Daikin Comfort Technologies Manufacturing, L.P. reserves the right to discontinue, or change at any time, specifications or designs without notice or without incurring obligations.

Standard Features

- All-Aluminum evaporator coil
- Optimized for use with R-410A refrigerant
- Factory-installed thermal expansion valves for cooling and heat pump applications
- Check flowrator for cooling and heat pump applications
- AHRI certified; ETL listed

Cabinet Features

- 21" depth for easier attic access
- Split seam front for easy access
- Foil-faced insulation covers the internal casing to reduce cabinet condensation
- Galvanized, leather grain-embossed finish
- Rust resistant, thermoplastic drain pans featuring a low water-retention design
- DecaBDE-free thermoplastic drain pan with secondary drain connections
- UV-resistant drain pan



10 YEAR **PARTS LIMITED WARRANTY***

* Complete warranty details available from you local dealer or at www.goodmanmfg.com. To receive the 10-Year Parts Limited Warranty, online registration must be completed within 60 days of installation. Online registration is not required in California or Quebec. The duration of warranty coverages in Texas differs in some cases.



CAPF | EVAPORATOR COIL

PAINTED CASED | UPFLOW / DOWNFLOW

EVAPORATOR
COILS

Model	Dimensions			Nominal Tons	Connection		Ship Weight (lbs)
	W"	D"	H"		Liquid"	Suction"	
CAPF3137B6*	17½	21	30	2½-3	¾	¾	53
CAPF3743C6*	21	21	30	3-3½	¾	¾	63
CAPF3743D6*	24½	21	30	3-3½	¾	¾	75
CAPF4860C6*	21	21	30	4-5	¾	¾	65
CAPF4860D6*	24½	21	30	4-5	¾	¾	68
CAPF4961C6*	21	21	30	4-5	¾	¾	73
CAPF4961D6*	24½	21	30	4-5	¾	¾	76

Daikin Comfort Technologies Manufacturing, L.P. reserves the right to discontinue, or change at any time, specifications or designs without notice or without incurring obligations.

Standard Features

- All-Aluminum evaporator coil
- Optimized for use with R-410A refrigerant
- Some models suitable for use with R-410A or R-22 refrigerant
- Check flowrator for cooling and heat pump applications
- AHRI certified; ETL listed

Cabinet Features

- 21" depth for easier attic access
- Split seam front for easy access
- Foil-faced insulation covers the internal casing to reduce cabinet condensation
- Galvanized, leather grain-embossed finish
- Rust resistant, thermoplastic drain pans featuring a low water-retention design
- DecaBDE-free thermoplastic drain pan with secondary drain connections
- UV-resistant drain pan



**10 PARTS
LIMITED
YEAR WARRANTY***

* Complete warranty details available from your local dealer or at www.goodmanmfg.com. To receive the 10-Year Parts Limited Warranty, online registration must be completed within 60 days of installation. Online registration is not required in California or Quebec. The duration of warranty coverages in Texas differs in some cases.

CAPFA | EVAPORATOR COIL

AlumaFin⁷
Evaporator Coil



PAINTED CASED | UPFLOW / DOWNFLOW

Model	Dimensions			Nominal Tons	Connection		Ship Weight (lbs)
	W"	D"	H"		Liquid"	Suction"	
CAPFA1818A6	14	21	18	1½	¾	¾	33
CAPFA1818B6	17½	21	18	1½	¾	¾	38
CAPFA1818C6	21	21	18	1½	¾	¾	43
CAPFA2418A6	14	21	18	2	¾	¾	33
CAPFA2418B6	17½	21	18	2	¾	¾	38
CAPFA2418C6	21	21	18	2	¾	¾	43
CAPFA2422A6	14	21	22	2	¾	¾	41
CAPFA2422B6	17½	21	22	2	¾	¾	45
CAPFA2422C6	21	21	22	2	¾	¾	50
CAPFA3022A6	14	21	22	2½	¾	¾	41
CAPFA3022B6	17½	21	22	2½	¾	¾	45
CAPFA3022C6	21	21	22	2½	¾	¾	50
CAPFA3022D6	24½	21	22	2½	¾	¾	52
CAPFA3626B6	17½	21	26	3	¾	7/8	47
CAPFA3626C6	21	21	26	3	¾	7/8	49
CAPFA3626D6	24½	21	26	3	¾	7/8	56
CAPFA4226B6	17½	21	26	3½	¾	7/8	56
CAPFA4226C6	21	21	26	3½	¾	7/8	56
CAPFA4226D6	24½	21	26	3½	¾	7/8	56

Daikin Comfort Technologies Manufacturing, L.P. reserves the right to discontinue, or change at any time, specifications or designs without notice or without incurring obligations.

Standard Features

- Compact and lightweight all-aluminum evaporator coil with AlumaFin⁷ technology
- Optimized for use with R-410A refrigerant
- 7mm tubes designed with patented grooves to maximize heat transfer
- Hydrophilic fins provide superior condensate management
- Check flowrator for cooling and heat pump applications
- Flowrator mounts on access panel for easier servicing
- UV and mold resistant thermoplastic condensate drain pans featuring a 'no water-retention' design
- DecaBDE-free thermoplastic drain pan with secondary drain connections
- AHRI certified
- ETL Listed

Cabinet Features

- 21-inch depth for easy access in tight installations
- Foil-faced insulation covers the internal casing to reduce cabinet condensation
- Single-piece access panel with tight seal helps to keep conditioned air from escaping
- Galvanized, leather grain-embossed finish
- Seal tight customized suction and liquid grommets for easy installation and removal



10 YEAR PARTS LIMITED WARRANTY

* Complete warranty details available from your local dealer or at www.goodmanmfg.com. To receive the 10-Year Parts Limited Warranty, online registration must be completed within 60 days of installation. Online registration is not required in California or Quebec. The duration of warranty coverages in Texas differs in some cases.



CAUF | EVAPORATOR COIL

UNCASED | UPFLOW / DOWNFLOW

EVAPORATOR
COILS

Model	Nominal Tons	Dimensions			Connection		Piston Size	Ship Weight (lbs)
		W"	D"	H"	Liquid"	Suction"		
CAUF1824A6*	1½-2	13	20⅞	16¼	¾	¾	.059	18
CAUF1824B6*	1½-2	16½	20⅞	16⅞	¾	¾	.059	23
CAUF1824C6*	1½-2	20	20⅞	16¾	¾	¾	.059	27
CAUF3030A6*	2½	13	20⅞	20⅞	¾	¾	.065	25
CAUF3030B6*	2½	16½	20⅞	18¾	¾	¾	.065	22
CAUF3030C6*	2½	20	20⅞	17¾	¾	¾	.065	25
CAUF3030D6*	2½	23	20⅞	17¾	¾	¾	.065	32
CAUF3131B6*	2½	16½	20⅞	20⅞	¾	¾	.068	27
CAUF3137B6*	2½-3	16½	20⅞	27	¾	¾	.071	53
CAUF3131C6*	2½	20	20⅞	20	¾	¾	.068	31
CAUF3636A6*	3	13	20⅞	19½	¾	¾	.071	30
CAUF3636B6*	3	16½	20⅞	19¾	¾	¾	.071	25
CAUF3636C6*	3	20	20⅞	19⅞	¾	¾	.071	28
CAUF3636D6*	3	23	20⅞	19⅞	¾	¾	.071	36
CAUF3642C6*	3-3½	20	20⅞	19	¾	¾	.078	29
CAUF3642D6*	3-3½	23	20⅞	19¾	¾	¾	.078	34
CAUF3743C6*	3-3½	20	20⅞	28⅞	¾	7/8	.078	46
CAUF3743D6*	3-3½	23	20⅞	27¾	¾	7/8	.078	43
CAUF4860C6*	4-5	20	20⅞	28	¾	7/8	.093	48
CAUF4860D6*	4-5	23	20⅞	28	¾	7/8	.093	39
CAUF4961C6*	4-5	20	20⅞	28	¾	7/8	.093	54
CAUF4961D6*	4-5	23	20⅞	27	¾	7/8	.093	59

Daikin Comfort Technologies Manufacturing, L.P. reserves the right to discontinue, or change at any time, specifications or designs without notice or without incurring obligations.

Standard Features

- All-Aluminum evaporator coil
- Optimized for use with R-410A refrigerant
- Some models suitable for use with R-410A or R-22 refrigerant
- Check flowrator for cooling and heat pump applications
- AHRI certified; ETL listed
- Rust resistant, thermoplastic drain pans featuring a low water-retention design
- DecaBDE-free thermoplastic drain pan with secondary drain connections
- UV-resistant drain pan



10 YEARS PARTS LIMITED WARRANTY*

* Complete warranty details available from you local dealer or at www.goodmanmfg.com. To receive the 10-Year Parts Limited Warranty, online registration must be completed within 60 days of installation. Online registration is not required in California or Quebec.

CAUFA | EVAPORATOR COIL

AlumaFin⁷
Evaporator Coil



UNCASED | UPFLOW / DOWNFLOW

Model	Nominal Tons	Dimensions			Connection		Piston Size	Ship Weight (lbs)
		W"	D"	H"	Liquid"	Suction"		
CAUFA1714A6	1½	12⅞	20	11¼	3/8	3/4	0.051	16
CAUFA1714B6	1½	16⅜	20	11⅞	3/8	3/4	0.051	18
CAUFA1818A6	1½	12⅞	20	14⅝	3/8	3/4	0.055	18
CAUFA1818B6	1½	16⅜	20	14½	3/8	3/4	0.055	20
CAUFA2318A6	2	19⅞	20	14⅜	3/8	3/4	0.057	18
CAUFA2318B6	2	12⅞	20	14⅝	3/8	3/4	0.057	20
CAUFA2318C6	2	16⅜	20	14½	3/8	3/4	0.057	26
CAUFA1818C6	1½	19⅞	20	14⅜	3/8	3/4	0.055	26
CAUFA2418A6	2	12⅞	20	14⅝	3/8	3/4	0.057	18
CAUFA2418B6	2	16⅜	20	14½	3/8	3/4	0.057	20
CAUFA2418C6	2	19⅞	20	14⅜	3/8	3/4	0.057	26
CAUFA2422A6	2	12⅞	20	18⅞	3/8	3/4	0.059	26
CAUFA2422B6	2	16⅜	20	17⅞	3/8	3/4	0.059	28
CAUFA2422C6	2	19⅞	20	17⅜	3/8	3/4	0.059	30
CAUFA2922A6	2½	12⅞	20	18⅞	3/8	3/4	0.065	26
CAUFA2922B6	2½	16⅜	20	17⅞	3/8	3/4	0.065	28
CAUFA2922C6	2½	19⅞	20	17⅜	3/8	3/4	0.065	30
CAUFA3022A6	2½	12⅞	20	18⅞	3/8	3/4	0.063	26
CAUFA3022B6	2½	16⅜	20	17⅞	3/8	3/4	0.063	28
CAUFA3022C6	2½	19⅞	20	17⅞	3/8	3/4	0.063	30
CAUFA3022D6	2½	23⅜	20	17¼	3/8	3/4	0.063	32
CAUFA3526B6	3	16⅜	20	21	3/8	7/8	0.065	30
CAUFA3526C6	3	19⅞	20	20¾	3/8	7/8	0.065	31
CAUFA3626B6	3	16⅜	20	21	3/8	7/8	0.065	30
CAUFA3626C6	3	19⅞	20	20¾	3/8	7/8	0.065	31
CAUFA3626D6	3	23⅜	20	20⅝	3/8	7/8	0.065	35
CAUFA4226B6	3½	16⅜	20	24⅜	3/8	7/8	0.071	28
CAUFA4226C6	3½	19⅞	20	24	3/8	7/8	0.071	30
CAUFA4226D6	3½	23⅜	20	23⅝	3/8	7/8	0.071	33

Daikin Comfort Technologies Manufacturing, L.P. reserves the right to discontinue, or change at any time, specifications or designs without notice or without incurring obligations.

Standard Features

- Compact and lightweight all-aluminum evaporator coil with AlumaFin⁷ technology
- Optimized for use with R-410A refrigerant
- 7mm tubes designed with patented grooves to maximize heat transfer
- Hydrophilic fins provide superior condensate management
- Check flowrator for cooling and heat pump applications
- UV and mold resistant thermoplastic condensate drain pans featuring a 'no water-retention' design
- DecaBDE-free thermoplastic drain pan with secondary drain connections
- AHRI certified
- ETL Listed



10 YEAR PARTS LIMITED WARRANTY

* Complete warranty details available from you local dealer or at www.goodmanmfg.com. To receive the 10-Year Parts Limited Warranty, online registration must be completed within 60 days of installation. Online registration is not required in California or Quebec.



CHPF | EVAPORATOR COIL

PAINTED CASED | HORIZONTAL "A"

EVAPORATOR
COILS

Model	Dimensions			Plenum Opening		Nominal Tons	Connection		Ship Weight (lbs)
	D"	W"	H"	D"	H"		Liquid"	Suction"	
CHPF1824A6*	21 ¹ / ₈	26	14	19	13	1 ¹ / ₂ -2	3/ ₈	3/ ₄	36
CHPF2430B6*	21 ¹ / ₈	26	17 ¹ / ₂	19	16 ¹ / ₂	2-2 ¹ / ₂	3/ ₈	3/ ₄	55
CHPF3636B6*	21 ¹ / ₈	26	17 ¹ / ₂	19	16 ¹ / ₂	3	3/ ₈	3/ ₄	50
CHPF3642C6*	21 ¹ / ₈	26	21	19	20	3-3 ¹ / ₂	3/ ₈	3/ ₄	63
CHPF3743C6*	21 ¹ / ₈	26	21	19	20	3- ¹ / ₂	3/ ₈	7/ ₈	63
CHPF4860D6*	21 ¹ / ₈ "	26	24 ¹ / ₂	19	23 ¹ / ₂	4-5	3/ ₈	7/ ₈	77

Daikin Comfort Technologies Manufacturing, L.P. reserves the right to discontinue, or change at any time, specifications or designs without notice or without incurring obligations.

Standard Features

- All-Aluminum evaporator coil
- Optimized for use with R-410A refrigerant
- Some models suitable for use with R-410A or R-22 refrigerant
- Check flowrator for cooling and heat pump applications
- AHRI certified; ETL listed

Cabinet Features

- 21" depth for easier attic access
- Split seam front for easy access
- Foil-faced insulation covers the internal casing to reduce cabinet condensation
- Galvanized, leather grain-embossed finish
- Rust resistant, thermoplastic drain pans featuring a low water-retention design
- DecaBDE-free thermoplastic drain pan with secondary drain connections
- UV-resistant drain pan



10 YEAR PARTS LIMITED WARRANTY

* Complete warranty details available from you local dealer or at www.goodmanmfg.com. To receive the 10-Year Parts Limited Warranty, online registration must be completed within 60 days of installation. Online registration is not required in California or Quebec.

CSCF | EVAPORATOR COIL



HORIZONTAL SLAB

Model	Dimensions			Plenum Opening		Capacity (Tons)	Connection Size		Ship Weight (lbs)
	D"	W"	H"	D"	H"		Liquid"	Suction"	
CSCF1824N6*	25½	12	25	16	21	1½-2	¾	¾	43
CSCF3036N6*	33½	12	25	24	21	2½-3	¾	7/8	52.5
CSCF3642N6*	39½	12	25	30	21	3-3½	¾	7/8	43
CSCF4860N6*	39½	12	25	30	21	4-5	¾	7/8	60

Daikin Comfort Technologies Manufacturing, L.P. reserves the right to discontinue, or change at any time, specifications or designs without notice or without incurring obligations.

Standard Features

- All-Aluminum evaporator coil
- Optimized for use with R-410A refrigerant
- Some models suitable for use with R-410A or R-22 refrigerant
- Check flowrator for cooling and heat pump applications
- AHRI certified; ETL listed

Cabinet Features

- Split seam front for easy access
- Foil-faced insulation covers the internal casing to reduce cabinet condensation
- Galvanized, leather grain-embossed finish
- Rust resistant, thermoplastic drain pans featuring a low water-retention design
- DecaBDE-free thermoplastic drain pan with secondary drain connections
- UV-resistant drain pan



10 YEAR PARTS LIMITED WARRANTY

* Complete warranty details available from you local dealer or at www.goodmanmfg.com. To receive the 10-Year Parts Limited Warranty, online registration must be completed within 60 days of installation. Online registration is not required in California or Quebec.



CHPT | EVAPORATOR COIL

PAINTED CASED | HORIZONTAL "A"

EVAPORATOR
COILS

Model	Dimensions			Nominal Tons	Connection Size	
	D"	W"	H"		Liquid"	Suction"
CHPT4860D4**	26"	21 1/8"	24 1/2"	3 1/2 - 5	3/8"	7/8"

Daikin Comfort Technologies Manufacturing, L.P. reserves the right to discontinue, or change at any time, specifications or designs without notice or without incurring obligations.

Standard Features

- All-Aluminum evaporator coil
- Optimized for use with R-410A refrigerant
- Some models suitable for use with R-410A or R-22 refrigerant
- Check flowrator for cooling and heat pump applications
- AHRI certified; ETL listed

Cabinet Features

- 21" depth for easier attic access
- Split seam front for easy access
- Foil-faced insulation covers the internal casing to reduce cabinet condensation
- Galvanized, leather grain-embossed finish
- Rust resistant, thermoplastic drain pans featuring a low water-retention design
- DecaBDE-free thermoplastic drain pan with secondary drain connections
- UV-resistant drain pan



10 YEAR PARTS LIMITED WARRANTY

* Complete warranty details available from you local dealer or at www.goodmanmfg.com. To receive the 10-Year Parts Limited Warranty, online registration must be completed within 60 days of installation. Online registration is not required in California or Quebec.

CHPTA | EVAPORATOR COIL



HORIZONTAL SLAB

Model	Dimensions			Nominal Tons	Connection Size	
	D"	W"	H"		Liquid"	Suction"
CHPTA1822A4	22"	21"	14"	1.5	3/8"	3/4"
CHPTA1822B4	22"	21"	17.5"	1.5	3/8"	3/4"
CHPTA2426B4	26"	21"	17.5"	2	3/8"	7/8"
CHPTA2426C4	26"	21"	21"	2	3/8"	7/8"
CHPTA3026B4	26"	21"	17.5"	2.5	3/8"	7/8"
CHPTA3026C4	26"	21"	21"	2.5	3/8"	7/8"
CHPTA3630B4	30"	21"	17.5"	3	3/8"	7/8"
CHPTA3630C4	30"	21"	21"	3	3/8"	7/8"

Daikin Comfort Technologies Manufacturing, L.P. reserves the right to discontinue, or change at any time, specifications or designs without notice or without incurring obligations.

Standard Features

- All-Aluminum evaporator coil
- Optimized for use with R-410A refrigerant
- Some models suitable for use with R-410A or R-22 refrigerant
- Check flowrator for cooling and heat pump applications
- AHRI certified; ETL listed

Cabinet Features

- Split seam front for easy access
- Foil-faced insulation covers the internal casing to reduce cabinet condensation
- Galvanized, leather grain-embossed finish
- Rust resistant, thermoplastic drain pans featuring a low water-retention design
- DecaBDE-free thermoplastic drain pan with secondary drain connections
- UV-resistant drain pan





PACKAGED UNITS

GPCH3 | PACKAGED AIR CONDITIONER



13.4 SEER2 | ENERGY-EFFICIENT COMPRESSOR

Model	Cooling Capacities		SEER2/EER2	Electric Heat (kW)	Voltage-Phase	Dimensions			dBs	Ship Weight (lbs)
	Tons	CFM				W"	D"	H"		
GPCH32441*	2	875	13.4 / 10.6	5, 8, 10	208/230-1	66	34	22	76	310
GPCH33041*	2½	1,050	13.4 / 10.6	5, 8, 10, 15	208/230-1	66	34	22	76	315
GPCH33641*	3	1,200	13.4 / 10.6	5, 8, 10, 15	208/230-1	66	34	22	78	320
GPCH34241*	3½	1,200	13.4 / 10.6	5, 8, 10, 15, 20	208/230-1	66	34	22	78	365
GPCH34841*	4	1,600	13.4 / 10.6	5, 8, 10, 15, 20	208/230-1	66	34	24	80	375
GPCH36041*	5	1,600	13.4 / 10.6	5, 8, 10, 15, 20	208/230-1	66	34	24	80	380

Daikin Comfort Technologies Manufacturing, L.P. reserves the right to discontinue, or change at any time, specifications or designs without notice or without incurring obligations.

Standard Features

- Energy-efficient compressor with internal relief valve
- Multi-speed ECM indoor blower motor
- Quiet horizontal discharge
- Copper tube/aluminum fin condenser coil
- All-aluminum evaporator coil
- Totally enclosed, permanently lubricated condenser fan motor
- Fully charged system
- 5 kW to 20 kW electric heat kit available as a field-installed option
- AHRI Certified; ETL listed

Cabinet Features

- Heavy-gauge galvanized-steel cabinet with attractive Architectural Gray powder-paint finish
- Louvered condenser coil protection
- Aluminum foil-facing internal insulation reinforced with fiberglass scrim
- Fully insulated blower compartment has convenient access panels
- Meets cabinet air leakage requirements when tested in accordance with ASHRAE standard 193
- One footprint for all tonnages
- When properly anchored, meets the 2020 Florida Building Code unit integrity requirements for hurricane-type winds (Anchor bracket kits available.)



**20
23**
SEER2

10 YEAR PARTS LIMITED WARRANTY

* Complete warranty details available from your local dealer or at www.goodmanmfg.com. To receive the 10-Year Parts Limited Warranty, online registration must be completed within 60 days of installation. Online registration is not required in California or Quebec.



GPCM3 | PACKAGED AIR CONDITIONER

13.4 SEER2 | ENERGY-EFFICIENT SCROLL COMPRESSOR

PACKAGED
UNITS

Model	Nominal Capacities		Electric Heat (kW)	SEER2/EER2	Voltage-Phase	MCA	MOP	Dimensions			dBs	Ship Weight (lbs)
	"Cooling (Tons)"	"Cooling (CFM)"						W"	D"	H"		
GPCM32441A*	2	800	5,8,10	13.4 / 10.6	208 / 230-1	21.6	35	47	51	34 3/4	78	319
GPCM33041A*	2½	1000	5,8,10,15	13.4 / 10.6	208 / 230-1	23	35	47	51	34 3/4	78	342
GPCM33641A*	3	1200	5,8,10,15	13.4 / 10.6	208 / 230-1	26.1	40	47	51	34 3/4	80	365
GPCM34241A*	3½	1325	5,8,10,15	13.4 / 10.6	208 / 230-1	27.7	40	47	51	42 3/4	78	435
GPCM34841A*	4	1600	5,8,10,15,20	13.4 / 10.6	208 / 230-1	31.7	50	47	51	42 3/4	82	435
GPCM36041A*	5	1700	5,8,10,15,20	13.4 / 10.6	208 / 230-1	41	60	47	51	42 3/4	80	458

Daikin Comfort Technologies Manufacturing, L.P. reserves the right to discontinue, or change at any time, specifications or designs without notice or without incurring obligations.

Standard Features

- Energy-efficient compressor
- Multi-speed ECM indoor blower motor
- Convertible airflow: horizontal or downflow application
- Copper tube/aluminum fin condenser coil
- All-aluminum evaporator coil
- Totally enclosed, permanently lubricated condenser fan motor
- 5 kW to 20 kW electric heat kit available as a field-installed option
- AHRI Certified; ETL Listed

Cabinet Features

- Heavy-gauge galvanized-steel cabinet with attractive Architectural Gray powder-paint finish
- Aluminum foil-facing internal insulation reinforced with fiberglass scrim
- Fully insulated blower compartment with convenient access panels
- Meets cabinet air leakage requirements when tested in accordance with ASHRAE standard 193
- Louvered condenser coil protection
- One footprint for all tonnages
- When properly anchored, meets the 2020 Florida Building Code unit integrity requirements for hurricane-type winds (Anchor bracket kits available)



**20
23**
SEER2

10 YEARS PARTS LIMITED WARRANTY*

* Complete warranty details available from your local dealer or at www.goodmanmfg.com. To receive the 10-Year Parts Limited Warranty, online registration must be completed within 60 days of installation. Online registration is not required in California or Quebec.

GP HH5 | PACKAGED HEAT PUMP



UP TO 15.2 SEER2 | UP TO 6.7 HSPF2 | HIGH-EFFICIENCY SCROLL COMPRESSOR

Model	Nominal Capacities			Electric Heat (kW)	Voltage-Phase/Hz	SEER2/EER2	Dimensions			dBS	Ship Weight (lbs)
	Cooling ¹	Heating ¹	CFM				W"	D"	H"		
GP HH52441**	24,000	24,000	875	5, 8, 10	208/230-1	15.0 / 11.4	66	34	30	76	325
GP HH53041**	30,000	30,000	1,050	5, 8, 10, 15	208/230-1	15.2 / 11.9	66	34	30	76	325
GP HH53641**	36,000	36,000	1,200	5, 8, 10, 15	208/230-1	15.2 / 11.4	66	34	35	78	385
GP HH54241*	42,000	42,000	1,300	5, 8, 10, 15, 20	208/230-1	15.2 / 11.2	66	34	35	79	385
GP HH54841**	48,000	48,000	1,600	5, 8, 10, 15, 20	208/230-1	15.2 / 10.6	66	34	35	78	410
GP HH56041**	60,000	60,000	1,700	5, 8, 10, 15, 20	208/230-1	15.2 / 11.4	66	34	38.75	80	415

¹ Tons

"OTHPPKG" stands for Outdoor Thermostat Heat-Pump Package

Daikin Comfort Technologies Manufacturing, L.P. reserves the right to discontinue, or change at any time, specifications or designs without notice or without incurring obligations.

Standard Features

- High-efficiency scroll compressor
- Multi-speed ECM indoor blower motor
- Copper tube/aluminum fin condenser coil
- All-aluminum evaporator coil
- Totally enclosed, permanently lubricated condenser fan motor
- Fully charged system
- Quiet horizontal discharge
- Electric heat kit available as a field-installed option
- AHRI Certified; ETL Listed

Cabinet Features

- Heavy-gauge galvanized-steel cabinet with attractive Architectural Gray powder-paint finish
- Louvered condenser coil protection
- Aluminum foil-facing internal insulation reinforced with fiberglass scrim
- Fully insulated blower compartment with convenient access panels
- Meets cabinet air leakage requirements when tested in accordance with ASHRAE standard 193
- One footprint for all tonnages
- When properly anchored, meets the 2020 Florida Building Code unit integrity requirements for hurricane-type winds (Anchor bracket kits available.)



**20
23**
SEER2

10 YEARS PARTS LIMITED WARRANTY

* Complete warranty details available from your local dealer or at www.goodmanmfg.com. To receive the 10-Year Parts Limited Warranty, online registration must be completed within 60 days of installation. Online registration is not required in California or Quebec.



GPBM5 | PACKAGED HEAT PUMP

UP TO 15.2 SEER2 | UP TO 6.7 HSPF2 | HIGH-EFFICIENCY SCROLL COMPRESSOR

PACKAGED
UNITS

Model	Nominal Capacities			Electric Heat (kW)	SEER2/EER2	Voltage-Phase	MCA	MOP	Dimensions			dBs	Ship Weight (lbs)
	Cooling ¹	Heating ¹	CFM						W"	D"	H"		
GPBM52441A*	2	22800	850	5,8,10	15.2 / 11.4	208 / 230-1	18.7	25	47	51	34 3/4	76	376
GPBM53041A*	2 1/2	28600	1050	5,8,10,15	15.2 / 11.4	208 / 230-1	21.5	30	47	51	34 3/4	76	385
GPBM53641A*	3	33800	1200	5,8,10,15	15.2 / 11.4	208 / 230-1	22.8	35	47	51	34 3/4	76	492
GPBM54241A*	3 1/2	38500	1300	5,8,10,15	15.2 / 11.4	208 / 230-1	31.7	50	47	51	42 3/4	78	492
GPBM54841A*	4	44500	1600	5,8,10,15,20	15.2 / 11.2	208 / 230-1	33.3	50	47	51	42 3/4	78	492
GPBM56041A*	5	58500	2000	5,10,15,20	15.2 / 11.2	208 / 230-1	39	60	73 3/8	47 5/8	43 1/2	78	688

¹ Tons

Daikin Comfort Technologies Manufacturing, L.P. reserves the right to discontinue, or change at any time, specifications or designs without notice or without incurring obligations.

Standard Features

- High-efficiency two-stage scroll compressor
- Two-stage heating and cooling
- Multi-Speed ECM indoor blower motor
- Copper tube/aluminum fin condenser coils
- All-aluminum evaporator coil on 2- to 4-ton units
- Aluminum-copper evaporator coil on 5-ton units
- Liquid-line filter drier
- Convertible airflow: horizontal or downflow
- Electric heat kit available as a field-installed option
- AHRI Certified; ETL Listed

Cabinet Features

- Heavy-gauge galvanized-steel cabinet with attractive two-tone Architectural Gray powder-paint finish
- Aluminum foil-facing internal insulation reinforced with fiberglass scrim
- Fully insulated air-handling compartment with convenient access panels
- Louvered condenser coil protection
- Meets cabinet air leakage requirements when tested in accordance with ASHRAE standard 193
- When properly anchored, meets the 2020 Florida Building Code unit integrity requirements for hurricane-type winds (Anchor bracket kits available)



**20
23**
SEER2

10 YEAR PARTS LIMITED WARRANTY*

* Complete warranty details available from your local dealer or at www.goodmanmfg.com. To receive the 10-Year Parts Limited Warranty, online registration must be completed within 60 days of installation. Online registration is not required in California or Quebec.

GP HH3 | PACKAGED HEAT PUMP



13.4 SEER2 | 6.7 HSPF2 | ENERGY-EFFICIENT SCROLL COMPRESSOR

Model	Nominal Capacities			Electric Heat (kW)	SEER2/EER2	Voltage-Phase	Dimensions			dBs	Ship Weight (lbs)
	Cooling ¹	Heating ¹	CFM				W"	D"	H"		
GP HH32441**	24,000	875	22,800	5, 8, 10	14.5 / 12.0	208/230-1	66	34	30	76	324
GP HH33041**	30,000	1,050	27,600	5, 8, 10, 15	14.0 / 12.0	208/230-1	66	34	30	76	324
GP HH33641**	36,000	1,200	32,200	5, 8, 10, 15	14.0 / 11.5	208/230-1	66	34	35	78	387
GP HH34241**	42,000	1,300	37,600	5, 8, 10, 15, 20	14.0 / 12.0	208/230-1	66	34	35	78	387
GP HH34841**	48,000	1,600	44,000	5, 8, 10, 15, 20	14.0 / 12.0	208/230-1	66	34	35	80	412
GP HH36041**	60,000	1,700	54,500	5, 8, 10, 15, 20	14.0 / 11.5	208/230-1	66	34	38 3/4	80	412

¹ Tons

Daikin Comfort Technologies Manufacturing, L.P. reserves the right to discontinue, or change at any time, specifications or designs without notice or without incurring obligations.

Standard Features

- Energy-efficient scroll compressor
- Multi-speed ECM indoor blower motor
- Quiet horizontal discharge
- All-aluminum evaporator coil
- Copper tube/aluminum fin condenser coil
- Totally enclosed, permanently lubricated condenser fan motor
- Fully charged system
- Electric heat kit available as a field-installed option
- AHRI certified; ETL listed

Cabinet Features

- Heavy-gauge galvanized-steel cabinet with architectural gray powder-paint finish
- Aluminum foil-facing internal insulation reinforced with fiberglass scrim
- Fully insulated blower compartment with convenient access panels
- Meets cabinet air leakage requirements when tested in accordance with ASHRAE standard 193
- Louvered condenser coil protection
- One footprint for all tonnages
- When properly anchored, meets the 2020 Florida Building Code unit integrity requirements for hurricane-type winds (Anchor bracket kits available.)



**20
23**
SEER2

10 PARTS
YEAR LIMITED
WARRANTY*

* Complete warranty details available from your local dealer or at www.goodmanmfg.com. To receive the 10-Year Parts Limited Warranty, online registration must be completed within 60 days of installation. Online registration is not required in California or Quebec.



GPBM3 | PACKAGED HEAT PUMP

UP TO 13.4 SEER2 | 6.7 HSPF2 | ENERGY-EFFICIENT SCROLL COMPRESSOR

PACKAGED
UNITS

Model	Nominal Capacities			Electric Heat (kW)	SEER2/EER2	Voltage-Phase	MCA	MOP	Dimensions			dBs	Ship Weight (lbs)
	Cooling ¹	Heating ¹	CFM						W"	D"	H"		
GPBM32441A*	2	22,800	850	5,8,10	13.4 / 10.6	208 / 230-1	21.4	30	47	51	34 3/4	76	380
GPBM33041A*	2 1/2	27,200	1,050	5,8,10,15	13.4 / 10.6	208 / 230-1	23	35	47	51	34 3/4	76	390
GPBM33641A*	3	33,600	1,200	5,8,10,15	13.4 / 10.6	208 / 230-1	24.4	35	47	51	34 3/4	81	400
GPBM34241A*	3 1/2	38,000	1,300	5,8,10,15	13.4 / 10.6	208 / 230-1	29.2	45	47	51	42 3/4	80	485
GPBM34841A*	4	46,000	1,600	5,8,10,15,20	13.4 / 10.6	208 / 230-1	31.9	50	47	51	42 3/4	79	495
GPBM36041A*	5	55,500	1,850	5,8,10,15,20	13.4 / 10.6	208 / 230-1	37.5	60	47	51	42 3/4	80	495

¹ Tons

Daikin Comfort Technologies Manufacturing, L.P. reserves the right to discontinue, or change at any time, specifications or designs without notice or without incurring obligations.

Standard Features

- Energy-efficient scroll compressor
- Multi-speed ECM indoor blower motor
- Convertible airflow: horizontal or downflow
- Copper tube/aluminum fin condenser coil
- All-Aluminum evaporator coil
- Electric heat kit available as a field-installed option
- AHRI Certified; ETL Listed

Cabinet Features

- Heavy-gauge galvanized-steel cabinet with attractive Architectural Gray powder-paint finish
- Aluminum foil-facing internal insulation reinforced with fiberglass scrim
- Fully insulated air-handling compartment with convenient access panels
- Meets cabinet air leakage requirements when tested in accordance with ASHRAE standard 193
- Louvered condenser coil protection
- One footprint for all tonnages
- When properly anchored, meets the 2020 Florida Building Code unit integrity requirements for hurricane-type winds (Anchor bracket kits available.)



**20
23
SEER2**

**10 PARTS
LIMITED
YEAR WARRANTY***

* Complete warranty details available from your local dealer or at www.goodmanmfg.com. To receive the 10-Year Parts Limited Warranty, online registration must be completed within 60 days of installation. Online registration is not required in California or Quebec.

GPDM3 | PACKAGED GAS / DUAL-FUEL



UP TO 13.4 SEER2 | 81% AFUE | 6.7 HSPF2

Model	Nominal Ratings			Voltage-Phase	Dimensions			dBs	Ship Weight (lbs)
	Cooling	Heating	Gas Heat		W"	D"	H"		
GPDM32406041	23,800	23,500	60,000	208-230/ 1/ 61	47	51	34¾	76	440
GPDM33008041	28,500	28,500	80,000	208-230/ 1/ 61	47	51	34¾	76	440
GPDM33608041	34,200	34,400	80,000	208-230/ 1/ 61	47	51	34¾	76	440
GPDM34210041	40,500	39,600	100,000	208-230/ 1/ 61	47	51	42¾	76	545
GPDM34810041	44,500	43,285	100,000	208-230/ 1/ 61	47	51	42¾	76	545

¹ Tons ² BTU/h

Daikin Comfort Technologies Manufacturing, L.P. reserves the right to discontinue, or change at any time, specifications or designs without notice or without incurring obligations.

Standard Features

- Combines cooling with heat pump and gas heating for optimal year-long performance
- Energy-efficient scroll compressor
- Heavy-duty aluminized-steel heat exchanger
- Multi-speed ECM indoor blower motor
- All-aluminum evaporator coil
- Two-stage gas valve; natural gas with easy conversion to propane with accessory kit
- Power-assisted combustion
- High and low-pressure switch protection
- Direct spark ignition system includes a microprocessor-based control for the entire ignition sequence
- All blower operation and all safety circuits complete with self-diagnostics
- All models comply with California Low NOx emission standards
- This furnace does not comply with the SCAQMD Rule 1111 nor the SJVAPCD Rule 4905 14 ng/J NOx emission limit and therefore is not eligible for installation in California's South Coast Air Quality Management District (SCAQMD) nor the San Joaquin Valley Air Pollution Control District (SJVAPCD)
- AHRI Certified; ETL Listed

Cabinet Features

- Fully insulated heavy-gauge, zinc-coated steel cabinet with UV-resistant powder-paint finish
- Louvered metal panel condenser coil protection
- Aluminum foil-facing internal insulation reinforced with fiberglass scrim
- Compressor sound blanket
- Convenient access panels
- One roof curb fits all units
- Bottom, 2" high base rails for easy handling
- All models fit a standard-size pick-up truck
- When properly anchored, meets the 2010 Florida Building Code unit integrity requirements for hurricane-type winds (Anchor bracket kits available.)
- Meets cabinet air leakage requirements when tested in accordance with ASHRAE standard 193
- One footprint for all tonnages



**20
23
SEER2**

20 YEAR HEAT EXCHANGER LIMITED WARRANTY*

10 YEAR PARTS LIMITED WARRANTY*

* Complete warranty details available from your local dealer or at www.goodmanmfg.com. To receive the 20-Year Heat Exchanger Limited Warranty (good for as long as you own your home), and 10-Year Parts Limited Warranty, online registration must be completed within 60 days of installation. Online registration is not required in California or Quebec.



GPGM5 | PACKAGED GAS / ELECTRIC UNIT

UP TO 15.2 SEER | 81% AFUE | HIGH-EFFICIENCY SCROLL COMPRESSOR

PACKAGED
UNITS

Model	Nominal Ratings			SEER2/ EER2	Voltage- Phase	Dimensions			dBs	Ship Weight (lbs)
	Cooling ¹	Gas Heat ²	CFM			W"	D"	H"		
GPGM52404041A*	2	2	800	15.2 / 11.2	208/230-1	47	51	34¾	78	380
GPGM53004041A*	2½	2½	950	14.6 / 11.2	208/230-1	47	51	34¾	76	407
GPGM53608041A*	3	3	1,200	15.2 / 11.2	208/230-1	47	51	42¾	79	500
GPGM54208041A*	3½	3½	1,250	14.7 / 11.2	208/230-1	47	51	42¾	80	505
GPGM54810041A*	4	4	1,300	15.0 / 11.2	208/230-1	47	51	42¾	79	500
GPGM56014041A*	5	140,000	1,800	15.2 / 11.2	208/230-1	73 3/8	47 5/8	43½	78	688

¹ Tons ² BTU/h

Daikin Comfort Technologies Manufacturing, L.P. reserves the right to discontinue, or change at any time, specifications or designs without notice or without incurring obligations.

Standard Features

- Durable, corrosion-resistant T-140 aluminized steel tubular heat exchanger
- High-efficiency two-stage scroll compressor
- Convertible airflow: horizontal or downflow application
- Variable-speed ECM indoor blower motor
- Copper tube/aluminum fin condenser coil
- All-aluminum evaporator coil on 2- to 4-ton units
- Aluminum-copper evaporator coil on 5-ton units
- Power-assisted combustion
- Loss-of-charge protection & high-pressure switch
- Two-stage gas valve; natural gas with easy conversion to propane with accessory kit
- Direct spark ignition system includes a microprocessor-based control for the entire ignition sequence
- All blower operation and all safety circuits complete with self-diagnostics
- All models comply with California Low NOx emission standards (40ng/J NOx)
- This furnace does not comply with the SCAQMD Rule 1111 nor the SJVAPCD Rule 4905 14 ng/J NOx emission limit and therefore is not eligible for installation in California's South Coast Air Quality Management District (SCAQMD) nor the San Joaquin Valley Air Pollution Control District (SJVAPCD)
- AHRI Certified; ETL Listed

Cabinet Features

- Fully insulated heavy-gauge, zinc-coated steel cabinet with UV-resistant powder-paint finish
- Aluminum foil-facing internal insulation reinforced with fiberglass scrim
- Convenient access panels
- One roof curb fits 2-4 ton units
- Bottom, 2" high base rails for easier handling
- 2-4 ton models fit a standard-size pick-up truck
- When properly anchored, meets the 2020 Florida Building Code unit integrity requirements for hurricane-type winds (Anchor bracket kits available.)
- Meets cabinet air leakage requirements when tested in accordance with ASHRAE standard 193



**20
23
SEER2**

20 YEAR **HEAT EXCHANGER LIMITED WARRANTY**

10 YEAR **PARTS LIMITED WARRANTY**

* Complete warranty details available from your local dealer or at www.goodmanmfg.com. To receive the 20-Year Heat Exchanger Limited Warranty (good for as long as you own your home), and 10-Year Parts Limited Warranty, online registration must be completed within 60 days of installation. Online registration is not required in California or Quebec.

GPGM3 | PACKAGED GAS / ELECTRIC UNIT



UP TO 13.4 SEER2 | 81% AFUE | ENERGY-EFFICIENT SCROLL COMPRESSOR

Model	Nominal Capacities			SEER / EER	Voltage- Phase-Hz	Dimensions			dBS	Ship Weight (lbs)
	Cooling ¹	Heating ²	CFM			W"	D"	H"		
GPGM32404041	2	40,000	800	13.4 / 10.6	208/230-1	47	51	34½	78	435
GPGM32406041	2	60,000	800	13.4 / 10.6	208/230-1	47	51	34½	78	439
GPGM33004041	2½	40,000	1,000	13.4 / 10.6	208/230-1	47	51	34½	78	438
GPGM33006041	2½	60,000	1,000	13.4 / 10.6	208/230-1	47	51	34½	78	442
GPGM33604041	3	40,000	1,200	13.4 / 10.6	208/230-1	47	51	34½	78	470
GPGM33606041	3	60,000	1,200	13.4 / 10.6	208/230-1	47	51	34½	78	475
GPGM33608041	3	80,000	1,200	13.4 / 10.6	208/230-1	47	51	34½	78	480
GPGM34206041	3½	60,000	1,300	13.4 / 10.6	208/230-1	47	51	34½	78	515
GPGM34208041	3½	80,000	1,300	13.4 / 10.6	208/230-1	47	51	34½	78	520
GPGM34806041	4	60,000	1,525	13.4 / 10.6	208/230-1	47	51	42½	80	540
GPGM34808041	4	80,000	1,525	13.4 / 10.6	208/230-1	47	51	42½	80	545
GPGM34810041	4	100,000	1,525	13.4 / 10.6	208/230-1	47	51	42½	80	550
GPGM36108041	5	80,000	1,750	13.4 / 10.6	208/230-1	47	51	42½	79	555
GPGM36110041	5	100,000	1,750	13.4 / 10.6	208/230-1	47	51	42½	79	560
GPGM36112041	5	120,000	1,750	13.4 / 10.6	208/230-1	47	51	42½	79	565

¹ Tons ² BTU/h

Daikin Comfort Technologies Manufacturing, L.P. reserves the right to discontinue, or change at any time, specifications or designs without notice or without incurring obligations.

Standard Features

- Energy-efficient scroll compressor
- Multi-speed ECM indoor blower motor
- Convertible airflow: horizontal or downflow application
- All-aluminum evaporator coil
- Power-assisted combustion
- Direct spark ignition system includes a microprocessor-based control for the entire ignition sequence, all blower operation, and all safety circuits complete with self-diagnostics
- All models comply with California Low NOx standards (40ng/J NOx)
- This furnace does not comply with the SCAQMD Rule 1111 nor the SJVAPCD Rule 4905 14 ng/J NOx emission limit and therefore is not eligible for installation in California's South Coast Air Quality Management District (SCAQMD) nor the San Joaquin Valley Air Pollution Control District (SJVAPCD)
- AHRI Certified; ETL Listed

Cabinet Features

- High-quality UV-resistant powder-paint finish
- Aluminum foil-facing internal insulation reinforced with fiberglass scrim
- Convenient access panels
- One roof curb fits all units
- Fully insulated cabinet
- Bottom, 2" high base rails for easier handling
- Meets cabinet air leakage requirements when tested in accordance with ASHRAE standard 193
- One footprint for all tonnages



**20
23
SEER2**

20 YEAR HEAT EXCHANGER LIMITED WARRANTY

10 YEAR PARTS LIMITED WARRANTY

* Complete warranty details available from your local dealer or at www.goodmanmfg.com. To receive the 20-Year Heat Exchanger Limited Warranty (good for as long as you own your home), and 10-Year Parts Limited Warranty, online registration must be completed within 60 days of installation. Online registration is not required in California or Quebec.



GPUM3 | PACKAGED GAS/ELECTRIC UNIT

UP TO 13.4 SEER2 | ULTRA-LOW NOX | 81% AFUE | ENERGY-EFFICIENT SCROLL COMPRESSOR

PACKAGED
UNITS

Model	Nominal Ratings			SEER2/ EER2	Voltage- Phase	Dimensions			dBs	Ship Weight (lbs)
	Cooling ¹	Gas Heat ²	CFM			W"	D"	H"		
GPUM32404041	2	40,000	800	13.4 / 10.6	208/230-1	47	51	34½	78	435
GPUM33006041	2½	60,000	1,000	13.4 / 10.6	208/230-1	47	51	34½	78	442
GPUM33606041	3	60,000	1,200	13.4 / 10.6	208/230-1	47	51	34½	78	520
GPUM34208041	3½	80,000	1,300	13.4 / 10.6	208/230-1	47	51	42½	78	545
GPUM34808041	4	80,000	1,525	13.4 / 10.6	208/230-1	47	51	42½	80	555
GPUM36108041	5	80,000	1,700	13.4 / 10.6	208/230-1	47	51	42½	79	555

Standard Features

- Heavy-duty stainless-steel heat exchanger
- Energy-efficient scroll compressor
- Multi-speed ECM indoor blower motor
- Convertible airflow: horizontal or downflow application
- All-aluminum evaporator coil
- Power-assisted combustion
- Direct spark ignition system includes a microprocessor-based control for the entire ignition sequence, all blower operation, and all safety circuits complete with self-diagnostics
- California Ultra-Low NOx emissions compliant
- Eligible for installation in California's South Coast Air Quality Management District (SCAQMD) and San Joaquin Valley Air Pollution Control District (SJVUAPCD). This gas packaged unit furnace complies with the 14 ng/J NOx emission limit in SCAQMD Rule 1111 and SJVUAPCD Rule 4905. This gas packaged unit furnace is eligible for the SCAQMD Clean Air Furnace Rebate Program: www.CleanAirFurnaceRebate.com
- AHRI Certified; ETL Listed

Cabinet Features

- High-quality UV-resistant powder-paint finish
- Aluminum foil-facing internal insulation reinforced with fiberglass scrim
- Convenient access panels
- One roof curb fits all units
- Fully insulated cabinet
- Bottom, 2" high base rails for easier handling
- Meets cabinet air leakage requirements when tested in accordance with ASHRAE standard 193
- One footprint for all tonnages



**20
23
SEER2**

20 YEAR **HEAT EXCHANGER LIMITED WARRANTY***

10 YEAR **PARTS LIMITED WARRANTY***

* Complete warranty details available from your local dealer or at www.goodmanmfg.com. To receive the 20-Year Heat Exchanger Limited Warranty (good for as long as you own your home), and 10-Year Parts Limited Warranty, online registration must be completed within 60 days of installation. Online registration is not required in California or Quebec.



CONTROLS & THERMOSTATS

NEST THERMOSTAT E + GOODMAN

HIGH-RESOLUTION FULL COLOR DISPLAY | BUILT-IN WI-FI

Product Benefits

Easy to use

- No more programming. Customers can choose between a basic schedule right out of the box or Auto-Schedule, which learns the temperatures they like and programs itself.

Easy to save energy

- It can use sensors and a phone's location to check if customers have left the house. Then it can set itself to an Eco temperature to save energy.

HVAC monitoring

- Looks after customers' heating and cooling systems and sends an alert if something doesn't seem right.¹

Remote temperature sensing

- Works with the Nest Temperature Sensor to help customers keep their homes even more comfortable from room to room.²

Product Features

- Auto-Schedule
- Basic Schedule
- HVAC monitoring
- Energy History
- Home Report
- Nest Leaf
- Nest app
- Airwave
- System Match
 - Early-On
 - Heat Pump Balance
 - True Radiant
- Time-to-Temperature
- Weather aware
- Sunblock
- Cool to Dry
- Thermostat lock
- Software updates over Wi-Fi
- Safety Temperature Alert
- Furnace Heads-Up
- Filter Reminder
- System Test

1. List of eligible HVAC systems is available at g.co/nest/hvac-monitoring. Alerts can notify you of a potential issue with an eligible HVAC system. They're meant to provide helpful information, not an endorsement, representation, or warranty of any kind about the health of your HVAC system. Alerts aren't intended to replace a diagnosis by a qualified HVAC professional.

2. Sold Separately.



Compatibility

- The Nest Thermostat E + Goodman works with 85% of 24V heating and cooling systems, including gas, electric, forced air, heat pump, radiant, oil, hot water, solar, and geothermal.
- Heating and cooling: 1 stage of heating (W1) and cooling (Y1) and a second stage of either heating (W2) or cooling (Y2).
- Heat pump: with auxiliary and emergency heat (O/B, AUX)
- Fan (G)
- Power (C, RH, or RC)
- The Nest Thermostat E + Goodman is designed to work even in homes without a common C wire, but installation of a new C wire may be required in rare cases.
- Compatible with the Nest Temperature Sensor (sold separately).

Bandwidth requirements

- Average bandwidth approximately 50MB/week upload and 50MB/week download

Certifications

- UL 873, Temperature-Indicating and -Regulating Equipment
- CSA-C22.2 No. 24, Temperature-Indicating and -Regulating Equipment
- ENERGY STAR®



* Complete warranty details available from your local branch.

GT4272 / GT4273 | TOUCHSCREEN THERMOSTATS

HIGH-RESOLUTION FULL COLOR DISPLAY | BUILT-IN WI-FI

Product Features for All Models

- Built-in Wi-Fi with downloadable remote control apps
- Customizable wallpaper and slide show*
- Built-in nature and holiday wallpaper themes
- Customizable service alerts
- "Simple as you want" operation with easy-to-read display
- TouchScreen assistant for fast and easy programming
- SD memory card slot for easy importing and exporting of thermostat data, including copying data between thermostats*
- At-a-glance screen lets users see temperature and heating/cooling status
- Programmable fan and night-time dimmer
- 7-Day programmable scheduler
- Switchable programmable or non-programmable
- Up to 4 heat & 2 cool stages
- Automatic daylight savings adjustments
- 7-Day energy usage graph
- Passcode security for screen lock and set-point limits
- Multiple languages: English, Spanish, and French
- Gas/electric or heat pump control
- Universal compatibility including dual fuel



5 **PARTS**
YEAR **LIMITED**
WARRANTY*

* Complete warranty details are available from your local dealer or at www.goodmanmfg.com.

GT4273 Features

- Controls humidification & dehumidification

* SD card required for set-up. SD card not included.

PRS3110/PRS3210 | NON-PROGRAMMABLE THERMOSTAT

PRS4110/PRS4210 | PROGRAMMABLE THERMOSTAT

LARGE DISPLAY WITH BRIGHT BLUE BACKLIGHT

Compatibility

- Single-stage conventional or heat pump systems
- Multi-stage heat pump systems (PRS3210, PRS4210)
- Multi-stage conventional systems (PRS3210, PRS4210)
- 2-wire hydronic zone systems
- Millivolt systems

Features

- Large display with bright blue backlight
- Adjustable temperature limits for multi-family housing
- Hardwire or battery powered
- Permanent memory retains settings
- Low battery indicator
- Front access reset button
- Compressor short cycle protection
- Fahrenheit or celsius display mode
- Adjustable temperature differential
- ESD guard™ electronic circuitry
- Trilingual packaging and instructions

Additional Features (PRS4110/PRS4210)

- 7 day, 5-2 day or non-programmable
- Temporary program override
- Programmable extended hold mode
- Filter check monitor
- Adaptive recovery mode (ARM™)
- ROHS compliant



Non-Programmable*

PRS3110 – 1 Heat / 1 Cool

PRS3210 – 2 Heat / 1 Cool



Programmable*

PRS4110 – 1 Heat / 1 Cool

PRS4210 – 2 Heat / 1 Cool



* Complete warranty details available from your local branch.

PRS6110 / PRS6320 | UNIVERSAL PROGRAMMABLE THERMOSTATS

LARGE DISPLAY WITH BRIGHT BLUE BACKLIGHT

Compatibility

- Single-stage conventional or heat pump systems
- Multi-stage heat pump systems
- Multi-stage conventional systems (PRS6320)
- 2 or 3 wire hydronic zone systems
- Millivolt systems

Features

- 7 day, 5-2 day or non-programmable
- Large display with bright blue backlight
- Auto or manual changeover
- Residential or commercial modes
- Hardwire or battery powered
- Permanent memory retains settings
- Circulating fan mode
- Programmable fan mode
- Separate user and installer reset buttons
- User selectable service monitors
- Indoor or outdoor remote sensing
- Temporary program override
- Programmable extended hold mode
- Adaptive recovery mode (ARM™)
- Multi-level keypad lockout
- Heat pump balance points
- Trilingual packaging and instructions
- ROHS compliant



Premier Universal Programmable*

PRS6110 – 2 Heat / 1 Cool

PRS6320 – 3 Heat / 2 Cool



* Complete warranty details available from your local branch.

PRS6420 | UNIVERSAL PROGRAMMABLE TOUCHSCREEN THERMOSTATS

LARGE DISPLAY WITH BRIGHT BLUE BACKLIGHT

Compatibility

- Single-stage conventional or heat pump systems
- Multi-stage heat pump systems
- Multi-stage conventional systems
- 2 wire hydronic zone systems
- Millivolt systems

Features

- 7 day, 5-2 day or non-programmable
- Auto or manual changeover
- Residential or commercial modes
- Hardwire or battery powered
- Permanent memory retains settings
- Circulating and programmable fan modes
- Separate user and installer reset buttons
- User selectable service monitors
- Indoor or outdoor remote sensing
- Multi-level keypad lockout
- Temporary program override
- Programmable extended hold mode
- Adaptive recovery mode (ARM™)
- Humidification and dehumidification control
- Heat pump balance points
- Auxiliary fresh air economizer terminal
- Auxiliary heat fossil fuel option
- Trilingual packaging and instructions
- ROHS compliant



Premier Universal Programmable Touchscreen*

PRS6420 – 4 Heat / 2 Cool



* Complete warranty details available from your local branch.

PRS7325WF | UNIVERSAL SMART WI-FI THERMOSTATS

LARGE DISPLAY WITH BRIGHT BLUE BACKLIGHT

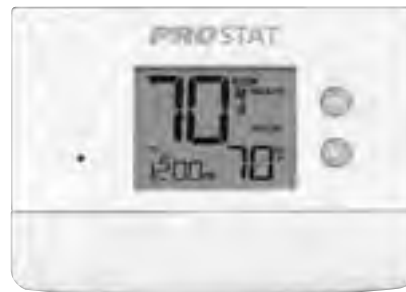
Compatibility

- Single-stage conventional or heat pump systems
- Multi-stage heat pump systems
- Multi-stage conventional systems
- No common (C) wire required for Wi-Fi on most systems**

Features

- 7 day, 5-2 day or non-programmable
- Large 3 sq. in. backlit display
- Bright blue backlight
- Auto or manual changeover
- User and installer lock modes
- SmartLimit™ temperature limits
- Auxiliary heat fossil fuel option
- Hardwire or battery powered
- Circulating fan mode
- ROHS compliant

** Wi-Fi works without common (C) wire on most systems; requires common (C) wire on heat pump, heat only or cool only systems



Universal Smart Wi-Fi*

PRS7325WF – Up to 3 Heat / 2 Cool



Remote Access from
Smartphone, Tablet or PC



* Complete warranty details available from your local branch.



Compatible with Amazon Alexa

Amazon Alexa is a trademark of Amazon.com, Inc.



BlueLink Application Help Available:
www.bluelinksmartconnect.com
Requires iOS or Android™ to connect

PRS6390 | WIRED REMOTE INDOOR SENSOR PRS6490 | WIRED REMOTE OUTDOOR SENSOR

Product Features: PRS6390

- Contemporary style for any decor
- Sense remotely or average with thermostat
- Sense range of 40° to 99°F

Product Specifications: PRS6390

- Accuracy: +/- 1°F (.5°C)
- Storage Temperature: 14° to 140° (-10 to 60°C)
- Operating Humidity: 5% to 95% Relative Humidity
- Dimensions: 3.0" x 2.5" x .9"
- Unit Weight: .12 Lbs.
- Carton Weight: .70 Lbs.
- Carton Size: 6.6" x 3.5" x 3.25"
- Carton Qty: 6



PRS6390

Product Features: PRS6490

- Mounts outdoors up to 200 feet away
- Enables outdoor control functions
- Sense range of -40° to 120°F

Product Specifications: PRS6490

- Accuracy: +/- 1°F (.5°C)
- Storage Temperature: 14° to 140° (-10 to 60°C)
- Operating Humidity: 5% to 95% Relative Humidity
- Dimensions: 1.25" x .25" w/60" 2-wire cable
- Unit Weight: .10 Lbs.
- Carton Weight: .60 Lbs.
- Carton Size: 6.6" x 3.5" x 3.25"
- Carton Qty: 6



PRS6490

Compatible with thermostat models:

- PRS6110
- PRS6320
- PRS6420



* Complete warranty details available from your local branch.

[illegible]

Thank goodness for Goodman.®



ONCE YOU CHOOSE THE **GOODMAN® BRAND**, YOU'LL PROBABLY BE A FAN FOR LIFE.



Millions across North America are big fans already.
Once you choose a **Goodman** brand, you'll probably be a big fan, too!
See why others are saying, "Thank Goodness for Goodman®."

Just go to www.goodmanmfg.com/reviews



HVAC Communicating Control

ComfortBridge technology offers off-the-wall smart communicating systems capable of customizing energy-efficient performance, use of any single-stage thermostat, and more.



www.comfortbridge.com



Pure. Clean. Air.

Indoor comfort in your home is about more than just adjusting the temperature on the thermostat. Many homeowners overlook the need for necessary components and systems that can improve the indoor air you breathe.



www.cleancomfort.com

GOODMAN IS SOCIAL!



GOODMAN – A MEMBER OF DAIKIN GROUP

Daikin Industries, Ltd. (DIL) is a global Fortune 1000 company. It is a worldwide leader for residential and commercial HVAC. DIL is engaged primarily in the development, manufacture, sale, and aftermarket support of heating, ventilation, air conditioning and refrigeration equipment, refrigerants and other chemicals, as well as oil hydraulic products. DIL is headquartered in Osaka, Japan.

The company provides innovative, premium quality indoor climate management solutions to meet the changing needs of residential, commercial, and industrial customers.



Air Conditioning & Heating

A DAIKIN BRAND

Our continuing commitment to quality products may mean a change in specifications without notice.

© 2023 **DAIKIN COMFORT TECHNOLOGIES NORTH AMERICA, INC.**

Houston, Texas · USA · www.goodmanmfg.com