



**Test Report**

No.T52210310296SN

Date: SEP 27, 2022

Page 1 of 6

LION D.O.O.  
PARTIZANSKA 37, 78400 GRADISKA, BOSNA I HERCEGOVINA

The following samples were submitted and identified by/on behalf of the client as:

BONDED FABRIC

Style No. : MEBL ŠTOF ETNA  
P.O. No. : 166-22  
Country of Origin : CHINA  
Requested Age Grading : 3

\*\*\*\*\*

SGS Ref. No. : SHHL2209039996SD  
Sample Receiving Date : SEP 19, 2022  
Further Information Date : SEP 21, 2022  
Testing Period : SEP 19, 2022 TO SEP 26, 2022



SGS-CSTC Standards Technical Services Co., Ltd.  
Shenzhen Branch Testing Center Handlines

Unless otherwise agreed in writing, this document is issued by the Company subject to its General Conditions of Service printed overleaf, available on request or accessible at <http://www.sgs.com/en/Terms-and-Conditions.aspx> and, for electronic format documents, subject to Terms and Conditions for Electronic Documents at <http://www.sgs.com/en/Terms-and-Conditions/Terms-e-Documents.aspx>. Attention is drawn to the limitation of liability, indemnification and jurisdiction issues defined therein. Any holder of this document is advised that information contained hereon reflects the Company's findings at the time of its intervention only and within the limits of Client's instructions, if any. The Company's sole responsibility is to its Client and this document does not exonerate parties to a transaction from exercising all their rights and obligations under the transaction documents. This document cannot be reproduced except in full, without prior written approval of the Company. Any unauthorized alteration, forgery or falsification of the content or appearance of this document is unlawful and offenders may be prosecuted to the fullest extent of the law. Unless otherwise stated the results shown in this test report refer only to the sample(s) tested and such sample(s) are retained for 30 days only.

Attention: To check the authenticity of testing / inspection report & certificate, please contact us at telephone:(86-755) 8307 1443, or email: CN.Doccheck@sgs.com

Room 101-501, Plant 4 & Room 101, Plant 2 & Room 101, Plant 3 & Room 301-501, Plant 3, Jiangtao (Bantian) Industrial Plant Area, No.430, Jihua Road, Bantian Community, Bantian Street, Longgang District, Shenzhen, Guangdong, China 518129 [www.sgs.com](http://www.sgs.com)

中国·广东·深圳市龙岗区坂田街道坂田社区吉华路430号江濠(坂田)工业厂区厂房4号 101-901、2号101、3号101、3号301-501 邮编: 518129 t:(86-755) 25328888 [sgs.china@sgs.com](mailto:sgs.china@sgs.com)

Member of the SGS Group (SGS SA)

Test Requested		Conclusion
1.	Client's requirement - Colour Fastness to Light	Pass
2.	Tensile Strength – Strip method (EN ISO 13934-1:2013)	See Result
3.	Per client requested, with reference to EN ISO 13936-2:2004 - Textiles— Determination of the slippage resistance of yarns at a seam in woven fabrics — Part2: Fixed load method	See Result
4.	Pilling/Fuzzing Resistance	See Result
5.	Per client requested, with reference to EN ISO 12947-2:2016 Textiles — Determination of the abrasion resistance of fabrics by the Martindale method — Part 2: Determination of specimen breakdown	See Result
6.	Tearing Strength – Wing-shaped test specimens - Single tear method (EN ISO 13937-3:2000)	See Result
7.	Colour Fastness to Rubbing (EN ISO 105-X12:2016)	See Result

\*\*\*\*\* FOR FURTHER DETAILS, PLEASE REFER TO THE FOLLOWING PAGE(S) \*\*\*\*\*

Signed for and on behalf of  
 SGS-CSTC Standards Technical  
 Services Co., Ltd. Shenzhen Branch Testing Center



Qu Ping, Kiky  
 Dept. Manager



Chen Canjie, Anson  
 Supervisor





# Test Report

No.T52210310296SN

Date: SEP 27, 2022

Page 3 of 6

## Results:

### Colour Fastness to Light

(EN ISO 105-B02:2014; use Xenon Arc Lamp, method 2 (Modified), exposure cycle A1, no flip-flop mode was used)

Comparison upto blue wool reference 4

	<u>A</u>	<u>Client's Requirement</u>
Grade (B.W.S)	4	Min. 4

### Tensile Strength – Strip method

(EN ISO 13934-1:2013)

Test Result:

	<u>Unit</u>	<u>A</u>
Warp/Length	N	795
Weft/Width	N	394

### Seam slippage

(EN ISO 13936-2:2004;)

Test Result:

<u>Seam slippage at 180 N</u>	<u>A</u>
Warp//seam (mm)	Nil
Weft//seam (mm)	Nil



SGS-CSTC Standards Technical Services Co., Ltd.  
Shenzhen Branch Testing Center Handlines

Unless otherwise agreed in writing, this document is issued by the Company subject to its General Conditions of Service printed overleaf, available on request or accessible at <http://www.sgs.com/en/Terms-and-Conditions.aspx> and, for electronic format documents, subject to Terms and Conditions for Electronic Documents at <http://www.sgs.com/en/Terms-and-Conditions/Terms-e-Documents.aspx>. Attention is drawn to the limitation of liability, indemnification and jurisdiction issues defined therein. Any holder of this document is advised that information contained hereon reflects the Company's findings at the time of its intervention only and within the limits of Client's instructions, if any. The Company's sole responsibility is to its Client and this document does not exonerate parties to a transaction from exercising all their rights and obligations under the transaction documents. This document cannot be reproduced except in full, without prior written approval of the Company. Any unauthorized alteration, forgery or falsification of the content or appearance of this document is unlawful and offenders may be prosecuted to the fullest extent of the law. Unless otherwise stated the results shown in this test report refer only to the sample(s) tested and such sample(s) are retained for 30 days only.

Attention: To check the authenticity of testing / inspection report & certificate, please contact us at telephone:(86-755) 8307 1443, or email: CN.Doccheck@sgs.com

Room 101-501, Plant 4 & Room 101, Plant 2 & Room 101, Plant 3 & Room 301-501, Plant 3, Jiangtao (Bantian) Industrial Plant Area, No.430, Jihua Road, Bantian Community, Bantian Street, Longgang District, Shenzhen, Guangdong, China 518129 [www.sgs.com](http://www.sgs.com)

中国·广东·深圳市龙岗区坂田街道坂田社区吉华路430号江涛(坂田)工业厂区厂房4号 101-901、2号101、3号101、3号301-501 邮编: 518129 1(86-755) 25328888 [sgs.china@sgs.com](mailto:sgs.china@sgs.com)

Member of the SGS Group (SGS SA)

**Pilling/Fuzzing Resistance**

(EN ISO 12945-2-2020; Martindale Abrasion & Pilling Tester; Total load: 415g)

As received Sample	A
After 125 Rev. Pilling Rating	4-5
After 500 Rev. Pilling Rating	4-5
After 1000 Rev. Pilling Rating	4-5
After 2000 Rev. Pilling Rating	4-5
After 5000 Rev. Pilling Rating	4-5
As received Sample	A
After 125 Rev. Fuzzing Rating	4-5
After 500 Rev. Fuzzing Rating	4-5
After 1000 Rev. Fuzzing Rating	4-5
After 2000 Rev. Fuzzing Rating	4-5
After 5000 Rev. Fuzzing Rating	4-5



Remarks:

Nomenclature for pilling rating:

5—No change 4—

Partially formed pills

3—Moderate pilling – pills of varying size and density partially covering the specimen surface. 2—

Distinct pilling – pills of varying size and density covering a large proportion of the specimen surface.

1—Severe pilling – pills of varying size and density covering the whole of the specimen surface.

Nomenclature for fuzzing rating:

5—No change

4—Slight surface fuzzing 3—

Moderate surface fuzzing 2—

Distinct surface fuzzing 1—Dense

surface fuzzing

**Abrasion Resistance**

(EN ISO 12947-2:2016; Martindale Wear & Abrasion Tester; 12 kPa Pressure)

	Unit	A
The quoted result	Rubs	Exceed 30000

**Tearing Strength – Wing-shaped test specimens - Single tear method**

(EN ISO 13937-3:2000)

Test Result:

	Unit	A
Warp/Length Yarns Torn	N	85
Weft/Width Yarns Torn	N	64

**Colour Fastness to Rubbing**

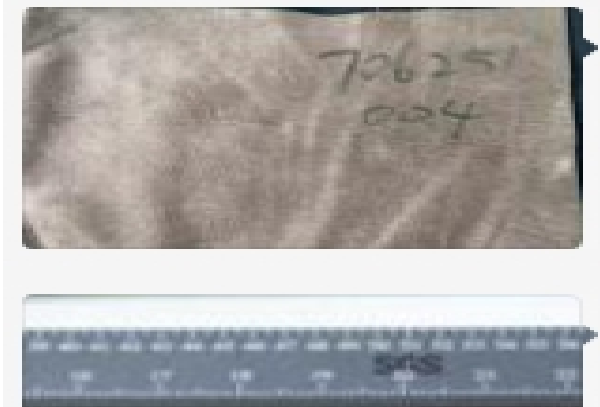
(EN ISO 105-X12:2016;Size of rubbing finger: 16mm diameter)

Dry staining	A
Wet staining	4-5
	4

Remark : Since the data and / or information above division line of front page is provided by the applicant, the relevant results or conclusions of this report are only made for these data and / or information, SGS shall not be responsible for the authenticity and integrity of such data and information and the validity of the results and / or conclusions arising therefrom. Testing results only apply to the sample as received.



### Sample Photo:



SGS authenticate the photo on original report only

\*\*\* End of Report \*\*\*

