



Inflatable Awning User Instruction

You are now the proud owner of the very latest in Inflatable awning designs. Produced by Starline in one of the largest awning factories in the world where quality and design are paramount in achieving total customer satisfaction. Starline awnings have been developed for the modern camper who appreciates new concepts in design technology.

Insurance

We strongly advise you to insure your awning against theft, storm or accidental damage.

Inflatable Tubes

The awning uses Starline inflatable tubes which have been designed to give years of trouble free service. Each tube is protected by a zipped reinforced outer skin.

The optimal pressure advised is 7-10psi, we advise that you do not over inflate above 10psi.

Air Pump

The Inflatable awning is supplied with a manually operated air pump specially designed for use with Starline Air valves. You must not use any other type of inflator.

Erecting your Inflatable Awning

Before you unpack your awning we strongly advise that you place a groundsheet in front of the caravan. This will avoid any soiling of the fabric or penetration by stones or twigs. Erecting the awning is a relatively simple task and we trust the following information will be of valuable assistance to the new camper. However we would advise the inexperienced camper to seek advice from the dealer.

1. Always site your awning on a flat piece of ground this will enable you to obtain the best possible fit of your awning.
2. Check that your awning rail is clean and free from any sharp edges which could easily damage the fabric or awning beading.
3. You are now ready to start erecting your awning. To make the task easier we would always suggest that two people will make erecting the awning a much easier task.
4. Start by threading the white/grey beading into the awning rail with one person pulling the awning through the rail. The other person should be feeding the beading into the rail ensuring that it runs smoothly. Position the awning so that it clears windows, doors, etc. Secure the awning in the correct position by pegging out the four corner tabs. Attach the inflator to the inflation valve; inflate to an optimal pressure of 7-10psi.

During the latter part of inflation it may be necessary to lift the tubes into the correct position. When you have inflated to the correct pressure disconnect the inflator ensuring that you have securely tightened the valve cap. Be careful not to cross thread this cap.

Roof support tubes: Starline 260, 300 roof support poles 2 ; Starline 390 roof support poles 3 ;

Inflate the tubes supplied to a pressure of 7-10psi. You will notice that Velcro is attached on the end of each tube. Insert the poles into the centre part of the roof for straight tubes, or alternatively curved part of the awning for curved tubes. These tubes will strengthen the roof and enable you to obtain a better shape. During calm weather you can remove these tubes and attach them to the front tubes to make a veranda bar.

To give the awning the correct shape and stability we advise that all guy lines are fitted and pegged correctly.

Suitability

The inflatable awning is designed for touring and weekend camping. During severe storms we would advise you to dismantle the awning as a precaution. The awning is not designed for permanent site camping or commercial use.

UV Deterioration

Starline uses only top quality materials in the production of the Inflatable awnings. However all coated polyester materials are subject to UV Deterioration if exposed to long periods of direct sunlight. To avoid this problem try and camp in a shaded area.

Condensation

Inflatable awnings are produced in Climatech material. This material contains a high proportion of synthetic materials and under certain climatic conditions, such as cool environment and high moisture, condensation can take place. This should not be confused with leaking. The condensation can be vastly improved by creating extra ventilation.

Safety

Climatech material is fire retardant and not fire proof. Do not cook inside the awning or use naked flames. Please read and understand the FIRE PRECAUTION LABELS THAT ARE SEWN INSIDE THE AWNING.

Cleaning Tips

Never use any type of detergent to clean your awning. To clean your awnings use clean water and a soft brush or cloth, never scrub the awning fabric as this could damage the coating.

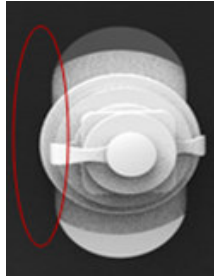
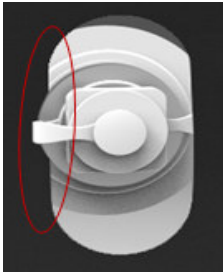
Special Tips on Taking Care of Inflatable Awnings

To ensure that you have a better experience and prolong the product lifespan, it is highly recommended that you read the following instructions carefully and follow those instructions as closely as possible.

1. Don't over-inflate the inflatable air beams. The maximum pressure allowed in the air beams is 7-10 psi.
2. It's a normal phenomenon that the tubes are slightly soft after being fully inflated for 2 or 3 days. All you need to do is to top-up a little bit of air.
3. We advise that you do not use the awning if the environmental temperature is over 40 degrees Celsius.
4. Do not cook inside the awning. Do not light up flames or apply any sharp objects inside the awning.
5. The sleeves for the air beams are locked. Do not cut the lock and zip the sleeves open when the air beams are fully inflated or you will risk damaging the inner air tubes.



6. Make sure that the Inflatable Valves are properly positioned correctly and are NOT in a twisted position when the awning is in use or being packed away.



7. We have included a repair kit with several sealing patches in the package, in case of need with an accidental puncturing of the air tube. Please follow the steps below on how to repair a puncture:
- Deflate the whole awning air beams.
 - Remove the inner air tubes from their sleeves.
 - Inflate the naked air tubes till they are fully inflated (please make sure not to over-inflate, i.e. the air tubes when inflated are not deformed).
 - Submerge the air tubes segment by segment in a bucket of water to identify the leaking point.
 - Wipe dry the leaking point. Seal the leaking point with a sealing tape from the repair kit.
 - Pack the inner air tubes back into their sleeves and inside the awning. The inflatable awning is ready for use again.

Storing

Never pack your awning away wet. If you are unfortunate to have to dismantle your awning in a wet condition, make sure that every single part of the awning is completely dry before packing it away. Failure to do this will result in your awning suffering from MILDEW AND WILL BECOME UNUASABLE.

Repairs

Repairs to the awning should only be made by a Starline authorized repair agent.

Warranty

12 months

Items not covered under this warranty

- .Defects arising from neglect and misuse
- . Storm damage
- .Excessive inflation of the tubes resulting in ruptured tubes.
- .Deterioration damages caused by UV degradation
- .Unauthorized repairs or alterations
- .Transportation or shipment cost to and from the manufacturer for any warranty claim or assessment against a warranty claim
- .Inflatable awnings that are used on permanent sites

Instruction for Starline Annexes

1.

Remove the
Awning's side panel.



2.



Zip on the annex and inflate the air tube.

3. Secure your Annex with the ladders, pegs & guy lines provided.

4.



Inner tent (optional extra) can be simply
attached via buckle points from inside.

Contents

Model	Canopy	Manual	Pump	Draft Skirt	Ladder	Tension Peg	Guy Line	Repair Kit		Inflatable Roof Bar
								Ribbon	Sealing Tape	
Starline 260	1	1	1	1	23	26	0	2	2	2
Starline 300	1	1	1	1	23	26	0	2	2	2
Starline 390	1	1	1	1	25	29	0	2	2	3
Starline Annex	1	0	0	0	12	16	4	0	0	0

CAUTION: TO PROLONG AWNING LIFE TIME, PLEASE DRY THE AWNING COMPLETELY BEFORE REPACKING!