



Tools for
Advancing
Innovation



OLED Ring Light
Provides Reduced Glare And Natural Light Tone

6.7x - 50x Continuous Zoom
10x Eyepieces

Dual Arm Boom Stand
Smooth Movement And Excellent Stability

Large Working Distance
Wide Field of View

SPZ-50

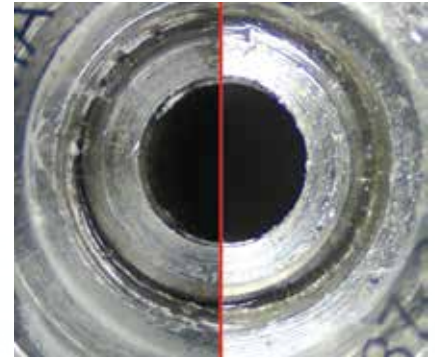
Stereo Zoom Microscope W/ OLED Ring Light And Double Arm Boom Stand

True binocular microscope. Provides crisp clear 3D images, long working distance and a wide field of view. 6.7x to 50x continuous zoom with 10x eyepieces.

Includes OLED Ring Light with 4 panels. When compared to standard LED ring lights, the OLED Ring Light provide reduced glare and a natural light tone.

SPZ-50 Stereo Zoom Microscope

- View images through the eyepiece or a monitor simultaneously.
- Click stop zoom adjustment for accurate measuring
- Large zoom ratio 7.46:1 - best zoom ratio in class
- Field of View 34.3mm to 3.6mm (1.35" to 0.14")
- Working distance 108mm (4.25") -the best in class
- 17mm (0.67") high eye point wide field 10x eyepieces (field number 23) for comfortable viewing even for operators with eyeglasses
- Diopter adjustment on both eyepiece tubes



OLED Ring Light

Standard LED Ring Light

OLED Ring Light

- 4 Organic Light Emitting Diode panels provide even, natural illumination with no glare or shadows
- Includes a dimmer box to control the light intensity
- Panels can be tilted up and down to provide the ideal illumination angle

Double Arm Boom Stand

- Heavy Base couples with ball bearing slide allows for easy positioning of the microscope
- 605mm height available with extension post
- All metal construction
- Ideal for use when large objects are to be viewed

E-Arm Focus Mount

- Rack & Pinion Mechanism with Coarse Focus Adjustment
- 50mm focusing distance in vertical direction

SPZ-50 Stereo Zoom Microscope W/ OLED Ring Light And Double Arm Boom Stand

Item Number	SPZ-50-534-223
Magnification	6.7x-50x
Zoom Ratio	7.46:1
Body	Binocular
Illumination	100mm OLED Ring Light
Working Distance	108mm 4.3in
Eye Pieces	10x wide field (FN:23)
Package Contents	1 ea SPZ True Binocular Stereo Zoom Microscope Body with Photo tube 2 ea. 10x Eyepieces 2 ea. Rubber Eye guards 1 ea. Dust Cover 1 ea.



Tools for
Advancing
Innovation

LED Ring Light	6.7x - 50x Continuous Zoom	Dual Arm Boom Stand	Large Working Distance
20,000 Hours High-Output LED Illumination	10x Eyepieces	Smooth Movement And Excellent Stability	Wide Field of View



SPZ-50

Stereo Zoom Microscope

W/ Dual Arm Boom Stand and Integrated Ring Light

Aven's SPZ-50 stereo zoom microscope provides crisp clear 3D images, long working distance and a wide field of view. 6.7x to 50x continuous zoom with 10x eyepieces.

Includes Aven's Double Arm Boom Stand with an integrated table clamp. The 22.4" horizontal arm easily glides to the required position. Comes complete with Aven's E-Arm focus mount with an integrated LED ring light and LED adjustment controller.

SPZ-50 Stereo Zoom Microscope

- Large zoom ratio 7.46:1 - best zoom ratio in class
- Field of View 34.3mm to 3.6mm (1.35" to 0.14")
- Working distance 108mm (4.25") -the best in class
- 17mm (0.67") high eye point wide field 10x eyepieces (field number 23) for comfortable viewing even for operators with eyeglasses
- Diopter adjustment on both eyepiece tubes

E-Arm Focus Mount with LED Ring Light

- E-Arm compatible with boom stands and articulating arm stands
- 60 integrated LED ring light with dimmer control
- Minimum 20,000 hours of high-output LED illumination
- Fits Aven's binocular and trinocular microscopes
- Low power consumption

Dual Arm boom Stand with Table Clamp

- Table clamp provides excellent stability
- Allows positioning of microscopes over large area
- Heavy duty all metal construction for durability
- Posts are highly polished for smooth operation
- Table clamp securely attaches to your work surface and saves table space

SPZ-50 Stereo Zoom Microscope W/ Ring Light And Dual Arm Boom Stand	
Item Number	SPZ50-209-536
Magnification	6.7x-50x
Zoom Ratio	7.46:1
Body	Binocular
Illumination	LED Ring Light
Working Distance	108mm 4.3in
Eye Pieces	10x wide field (FN:23)
Package Contents	Stereo Zoom Microscope E-Arm Focus Mount with LED Ring Light Dual Arm Boom Stand with Table Clamp



Tools for
Advancing
Innovation

Stereo Zoom
Microscope

3D
Imaging

Double Arm
Boom Stand

Tilttable Arbor

Fiber Optic
LED

Bright
Shadow-Free
Illumination

6.7x-50x
Optical
Magnification

Up to 200x
w/ optional
lenses



SPZ-50

Stereo Zoom Trinocular Microscope On Double Arm Boom Stand w/ LED FOI

SPZ-50 Stereo Zoom Binocular Microscope 6.7x to 50x mounted on a double arm boom stand with a heavy base. Included is our Prolux LED fiber optic illuminator and ring light that helps save energy, is brighter and lasts longer than traditional fiber optic illuminators.

Features:

- Superior optics and reliable mechanical components
- Magnification: 6.7x to 50x
- Magnification range with optional lenses: 6.7x to 200x
- High eye point of 17mm for comfortable viewing, even for operators with eye glasses
- Large zoom ratio gives this microscope exceptional versatility
- Multi-coated optical components, free from chromatic and spherical aberration
- Crystal clear high resolution images
- Double arm boom stand allows positioning of the microscope over large areas
- Tilt able arbor enables you to angle the microscope for maximum comfort and viewing
- LED fiber optic illuminator helps save energy, is brighter and lasts longer

Stereo Zoom Microscope SPZ-50 On Double Arm Boom Stand W/ LED FOI

Item Number	26800B-370
Magnification	6.7x-50x
Working Distance	108mm
Objective Lens	0.67 to 5.0x
Zoom Ratio	7.46:1
Base Dimensions	285 x 260 x 18mm
Weight	75lbs
Package Contents	SPZ-50 Body Double Arm Boom Stand with tilt able arbor, Focus Mount, LED Fiber Optic Illuminator, Ring Light Ring Light Adapter

SPZ-50 Stereo Zoom Binocular Microscope with Double Arm Boom Stand and LED Illumination

Double Arm
Boom Stand

22.5in Smooth
Gliding Arm

Includes 10x
Eyepieces

6.7x—50x
Magnification

High-Grade
Optics

Unibody
Design

E-Arm Focus
Mount

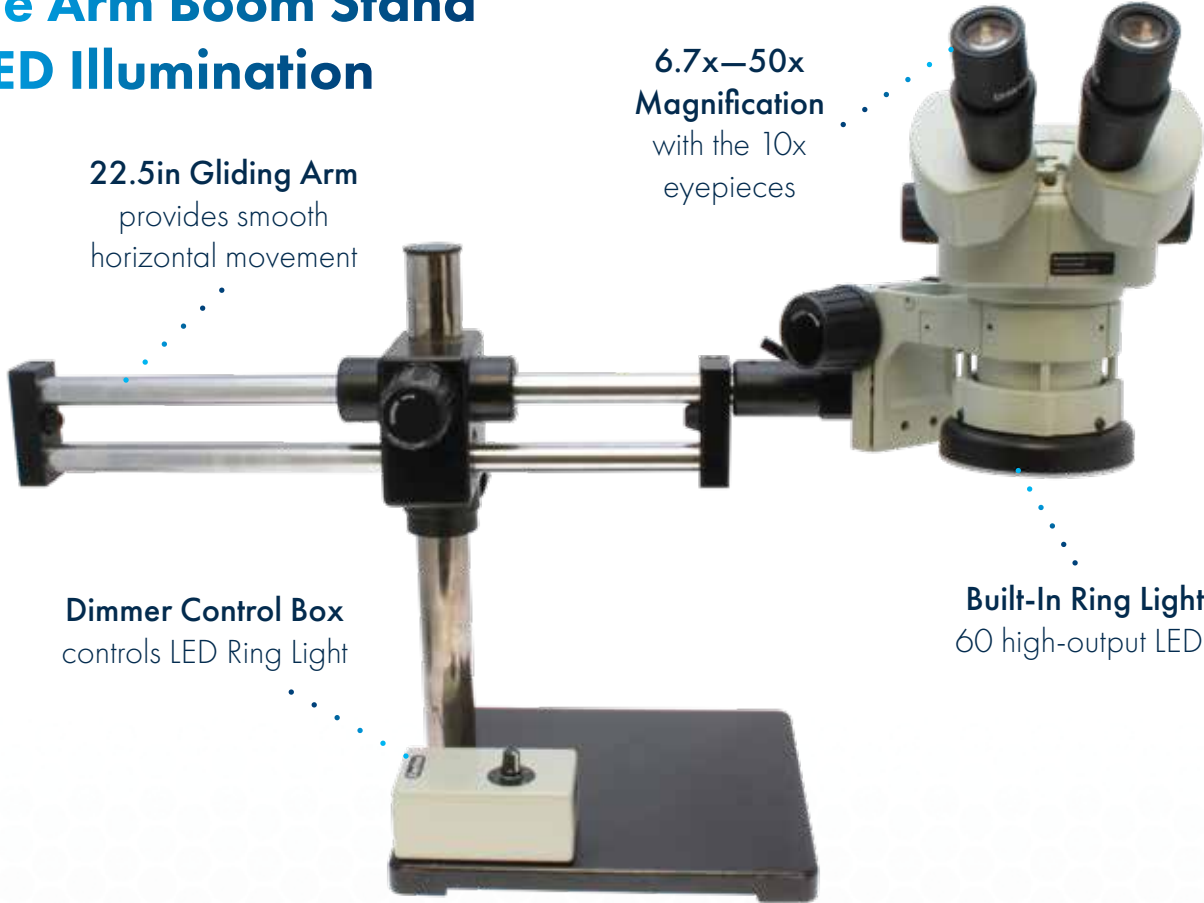
Built-In LED
Ring Light

22.5in Gliding Arm
provides smooth
horizontal movement

6.7x—50x
Magnification
with the 10x
eyepieces

Dimmer Control Box
controls LED Ring Light

Built-In Ring Light
60 high-output LEDs



High-Grade Optics Meets Flexibility

Aven's SPZ-50 Stereo Zoom Binocular Microscope on the Double Arm Boom Stand offers the best-in-class zoom ratio with super sharp 3D images, wide field of view, and long working distance. Magnification range of 6.7x-50x with the included 10x eyepieces, and additional lenses and eye pieces can increase the range up to 200x. Unibody construction and multi-coated optical components assure excellent contrast and definition of 3D images from edge-to-edge. The Double Arm Boom Stand is designed with a heavy base and ball bearing slide, which allows for easy microscope positioning. The 22.5in smooth gliding arm is ideal for scanning the microscope across a large subject. A 60-LED ring light is built into the focus mount and illumination is adjustable with the dimmer control box. The focus mount also provides course focus adjustments.

SPZ-50E BINOCULAR MICROSCOPE W/ DOUBLE ARM BOOM STAND AND LED ILLUMINATION

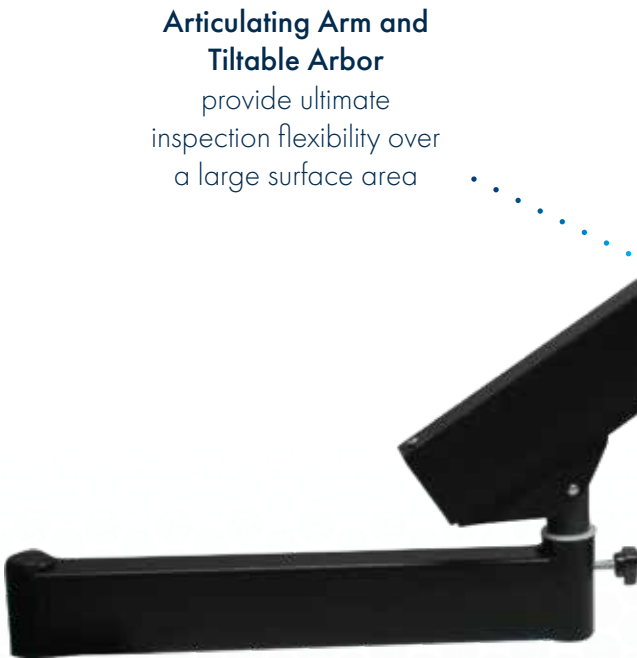
Item #	26800B-373-6
Illumination	60 LED Ring Light
Eyepieces	10x wide field (FN: 23) 45° inclined
Objective Lens	0.67x—5.0x
Magnification	6.7x—50x
Working Distance	108mm / 4.25in
Zoom Ratio	7.46:1
Field of View	34.3mm—3.6mm / 1.4in—0.14in
Interpupillary Distance	52mm—75mm / 2.05in—2.6in
Diopter Adjustment	+/- 7.2 D in both eyepiece tube
Optical System	Greenough
Stand Type	Double Arm Boom
Base Dimensions	285mm x 260mm / 11.22in x 10.32in
Pole/Track Height	380mm / 14.96in
Package Contents	SPZ-50 Body, Double Arm Boom Stand 26200B-534, E-Arm Focus Mount with LED Ring Light 26200B-209

SPZ-50 Stereo Zoom Binocular Microscope on Articulating Arm with Focus Mount + Ring Light

- Articulating Arm
- Tiltable Arbor
- Includes 10x Eyepieces
- 6.7x—50x Magnification
- High-Grade Optics
- Unibody Design
- Built-in LED Ring Light
- Course Focus

6.7x-50x
Magnification
with included
10x eyepieces

Articulating Arm and
Tiltable Arbor
provide ultimate
inspection flexibility over
a large surface area



Built-in LED
Ring Light
with brightness
adjustment

High-Grade Optics, Ultimate Flexibility

Aven's SPZ-50 Stereo Zoom Binocular Microscope on the Standard Articulating Arm with Arbor offers the best-in-class zoom ratio with super sharp 3D images, wide field of view, and long working distance. Magnification range of 6.7x-50x with the included 10x eyepieces, and additional lenses and eye pieces can increase the range up to 200x. Unibody construction and multi-coated optical components assure excellent contrast and definition of 3D images from edge-to-edge. The Articulating Arm with Arbor provides limitless positioning options and is compact enough to easily move out of the way when not in use. This maximum flexibility system is ideal for covering a large working area. The Tiltable Arbor extends the working range of the Articulating Arm Stand.

SPZ-50E STEREO ZOOM MICROSCOPE ON ARTICULATING ARM STAND WITH ARBOR AND FOCUS MOUNT + RING LIGHT

Item #	26800B-373-5
Illumination	60 LED Built-in Ring Light
Eyepieces	10x wide field (FN: 23) 45° inclined
Objective Lens	0.67x—5.0x
Magnification	6.7x—50x
Working Distance	108mm / 4.25in
Zoom Ratio	7.46:1
Field of View	34.3mm—3.6mm / 1.4in—0.14in
Interpupillary Distance	52mm—75mm / 2.05in—2.6in
Diopter Adjustment	+/- 7.2 D in both eyepiece tube
Optical System	Greenough
Stand Type	Standard Articulating Arm Stand with Arbor
Horizontal Arm Length	330mm / 12.99in
Front Arm Length	170mm / 6.69in
Package Contents	SPZ-50 Body, Standard Articulating Arm 26800B-560, Tiltable Arbor 26800B-521, Focus Mount with LED Ring Light 26200B-207

LED Ring Light	6.7x-50x Magnification	Articulating Arm	Large Working Distance
20,000 Hours High-Output LED Illumination	10x Eyepieces	Smooth Movement And Excellent Stability	Wide Field of View



SPZ-50

Stereo Zoom Microscope

W/ Articulating Arm Stand and Integrated Ring Light

Aven's SPZ-50 stereo zoom microscope provides crisp clear 3D images, long working distance and a wide field of view. 6.7x to 50x continuous zoom with 10x eyepieces.

The articulating arm is great for examining parts attached to a large or awkward shaped item. Can be easily moved out of the way when microscope is not in use to create more bench space. Comes complete with Aven's E-Arm focus mount with an integrated LED ring light and LED adjustment controller.

SPZ-50 Stereo Zoom Microscope

- Large zoom ratio 7.46:1 - best zoom ratio in class
- Field of View 34.3mm to 3.6mm (1.35" to 0.14")
- Working distance 108mm (4.25") -the best in class
- 17mm (0.67") high eye point wide field 10x eyepieces (field number 23) for comfortable viewing even for operators with eyeglasses
- Diopter adjustment on both eyepiece tubes

E-Arm Focus Mount with LED Ring Light

- E-Arm compatible with boom stands and articulating arm stands
- 60 Integrated LED ring light with dimmer control
- Minimum 20,000 hours of high-output LED illumination
- Fits Aven's binocular and trinocular microscopes
- Low power consumption

Articulating Arm Stand with Table Clamp

- Allows great flexibility in positioning microscopes
- Can be moved out of way when not in use
- All metal construction

SPZ-50 Stereo Zoom Microscope W/ Ring Light And Articulating Arm Stand	
Item Number	SPZ50-209-550-PCL
Magnification	6.7x-50x
Zoom Ratio	7.46:1
Body	Binocular
Illumination	LED Ring Light
Working Distance	108mm
Eye Pieces	10x wide field
Package Contents	Stereo Zoom Microscope E-Arm Focus Mount with LED Ring Light Articulating Arm Stand with Table Clamp



Tools for
Advancing
Innovation

LED Ring Light	6.7x - 50x Continuous Zoom	Single Arm Boom Stand	Large Working Distance
20,000 Hours High-Output LED Illumination	10x Eyepieces	Smooth Movement And Excellent Stability	Wide Field of View



SPZ-50

Stereo Zoom Microscope

W/ Single Arm Boom Stand and Integrated Ring Light

Aven's SPZ-50 stereo zoom microscope provides crisp clear 3D images, long working distance and a wide field of view. 6.7x to 50x continuous zoom with 10x eyepieces.

Includes Aven's Single Arm Boom Stand with an integrated table clamp. The 22.4" horizontal arm easily glides to the required position. Comes complete with Aven's E-Arm focus mount with an integrated LED ring light and LED adjustment controller.



SPZ-50 Stereo Zoom Microscope

- Large zoom ratio 7.46:1 - best zoom ratio in class
- Field of View 34.3mm to 3.6mm (1.35" to 0.14")
- Working distance 108mm (4.25") -the best in class
- 17mm (0.67") high eye point wide field 10x eyepieces (field number 23) for comfortable viewing even for operators with eyeglasses
- Diopter adjustment on both eyepiece tubes

E-Arm Focus Mount with LED Ring Light

- E-Arm compatible with boom stands and articulating arm stands
- 60 Integrated LED ring light with dimmer control
- Minimum 20,000 hours of high-output LED illumination
- Fits Aven's binocular and trinocular microscopes
- Low power consumption

Single Arm boom Stand with Table Clamp

- Perfect for stationary video and microscopy applications especially where vibrations can disrupt your work
- 16" (406mm) x 1 1/2" (38mm) OD stainless steel vertical
- 18" (457mm) x 1 1/2" (38mm) OD aluminum horizontal

SPZ-50 Stereo Zoom Microscope W/ Ring Light And Single Arm Boom Stand	
Item Number	SPZ50-209-525
Magnification	6.7x-50x
Zoom Ratio	7.46:1
Body	Binocular
Illumination	LED Ring Light
Working Distance	108mm 4.3in
Eye Pieces	10x wide field (FN:23)
Package Contents	Stereo Zoom Microscope E-Arm Focus Mount with LED Ring Light Single Arm Boom Stand with Table Clamp

SPZ-50 Stereo Zoom Binocular Microscope with Ultra Glide Stand and LED Illumination

Ultra Glide
Boom Stand

Includes 10x
Eyepieces

High-Grade
Optics

E-Arm Focus
Mount

23in Smooth
Gliding Arm

6.7x—50x
Magnification

Unibody
Design

Built-In LED
Ring Light



FEATURES

- 13.5in post with 23in smooth gliding arm
- Multi-coated optical components and unibody design
- Magnification: 6.7x—50x with included 10x eyepieces
- Best-in-class, large zoom ratio
- Built-in 60 LED Ring Light and dimmer control box

High-Grade Optics Meets Flexibility

Aven's SPZ-50 Stereo Zoom Binocular Microscope on the Ultra Glide Boom Stand offers the best-in-class zoom ratio with super sharp 3D images, wide field of view, and long working distance. Magnification of 6.7x-50x with the included 10x eyepieces, and additional lenses and eye pieces can increase the range up to 200x. Unibody construction and multi-coated optical components assure excellent contrast and definition of 3D images from edge-to-edge. The Ultra Glide Stand's 23in arm provides smooth horizontal movement over a large area and is equipped with two locking knobs to adjust its horizontal and vertical positions. The 13.5in post includes a safety collar. A 60-LED ring light is built into the focus mount, and illumination is adjustable with the dimmer control box.

SPZ-50E STEREO ZOOM BINOCULAR MICROSCOPE W/ ULTRA GLIDE STAND & LED ILLUMINATION

Item #	26800B-371-1
Illumination	60 LED Ring Light
Eyepieces	10x wide field (FN: 23) 45° inclined
Objective Lens	0.67x—5.0x
Magnification	6.7x—50x
Working Distance	108mm / 4.25in
Zoom Ratio	7.46:1
Field of View	34.3mm—3.6mm / 1.4in—0.14in
Interpupillary Distance	52mm—75mm / 2.05in—2.6in
Diopter Adjustment	+/- 7.2 D in both eyepiece tube
Optical System	Greenough
Stand Type	Ultra glide boom
Base Dimensions	220mm x 284mm / 8.7in x 11.2in
Pole/Track Height	250mm / 9.84in
Package Contents	SPZ-50 Body, Ultra Glide Boom Stand 26800B-556, 26200B-209 E-Arm Focus Mount w/ Integrated Ring Light dust cover, rubber eye guards, tension control pin



Tools for
Advancing
Innovation

V1_01-2018



ESD Safe Coating	Includes 10x Eyepieces	High-Grade Optics	Zoom, Focus, & LED Brightness Knobs
Built-In LED Ring Light	6.7x—50x Magnification	Unibody Design	Fine & Course Focusing

ESD Safe SPZ-50E Stereo Zoom Binocular Microscope on Stand PLED

FEATURES

- Multi-coated optical components, including ESD safe coated scope body and stand
- Magnification: 6.7x—50x with included 10x eyepieces
- PLED stand with built-in focus mount and 60-LED ring light with brightness adjustment
- Best-in-class, large zoom ratio

Premium Grade, Comfortable Inspection

Aven's **ESD Safe** SPZ-50E Stereo Zoom Binocular Microscope on Stand PLED offers the best-in-class zoom ratio with super sharp 3D images, wide field of view, and long working distance. Unibody construction and multi-coated optical components assure excellent contrast and definition of 3D images from edge-to-edge. The **ESD safe** coating is designed to meet the needs of applications in static-sensitive environments. A 60-LED ring light with a dimmer control is built into the focus mount, which has coarse and fine focusing for precise control.



POWERFUL EYEPIECES

At 45°, the standard high eye point wide field 10x eyepieces ensure comfortable viewing for all operators, including those who require eyeglasses.

SPZ-50E STEREO ZOOM BINOCULAR

Item #	26800B-371-ESD
Illumination	60 white LEDs
Eyepieces	10x wide field (FN: 23) 45° inclined
Objective Lens	0.67x—5.0x
Magnification	6.7x—50x
Working Distance	108mm / 4.25in
Zoom Ratio	7.46:1
Field of View	34.3mm—3.6mm / 1.4in—0.14in
Interpupillary Distance	52mm—75mm / 2.05in—2.6in
Diopter Adjustment	+/- 7.2 D in both eyepiece tube
Optical System	Greenough
Stand Type	Pole with built-in LED ring light and dimmer control
Base Dimensions	220mm x 284mm / 8.7in x 11.2in
Pole/Track Height	250mm / 9.84in
Weight	15lbs
Package Contents	SPZ-50E Body, Stand PLED 26800B-512-ESD, dust cover, rubber eye guards, tension control pin

SPZ-50 Stereo Zoom Binocular Microscope System with Polarized Ring Light

Polarized Ring Light	Includes 10x Eyepieces	High-Grade Optics	Pole Stand w/ Focus Mount
Reduces Glare	6.7x—50x Magnification	Unibody Design	Course Focus



FEATURES

- Multi-coated optical components and unibody design
- Magnification: 6.7x—50x with included 10x eyepieces
- Best-in-class, large zoom ratio
- 60 LED Polarized Ring Light reduces the glare from reflective subjects
- Compact Post Stand with Focus Mount provides coarse focus adjustments

High-Grade Optics, Durable Components

Aven's SPZ-50 Stereo Zoom Binocular Microscope on the Post Stand with Focus Mount offers the best-in-class zoom ratio with super sharp 3D images, wide field of view, and long working distance. Magnification range of 6.7x-50x with the included 10x eyepieces, and additional lenses and eye pieces can increase the range up to 200x. Unibody construction and multi-coated optical components assure excellent contrast and definition of 3D images from edge-to-edge. The 60 LED Polarized Ring Light features a brightness dial and level of polarization adjustment. The polarized ring light significantly reduces the glare from reflective parts, allowing operators to see details that would otherwise be obscured or washed out. The Post Stand with Focus Mount is lightweight and compact for saving valuable work space, and provides course focus adjustments.

SPZ-50E STEREO ZOOM BINOCULAR MICROSCOPE SYSTEM WITH POLARIZED RING LIGHT

Item #	26800B-373-4
Illumination	60 LED Polarized Ring Light
Eyepieces	10x wide field (FN: 23) 45° inclined
Objective Lens	0.67x—5.0x
Magnification	6.7x—50x
Working Distance	108mm / 4.25in
Zoom Ratio	7.46:1
Field of View	34.3mm—3.6mm / 1.4in—0.14in
Interpupillary Distance	52mm—75mm / 2.05in—2.6in
Diopter Adjustment	+/- 7.2 D in both eyepiece tube
Optical System	Greenough
Stand Type	Pole Stand
Base Dimensions	220mm x 284mm / 8.66in x 11.18in
Pole/Track Height	250mm / 9.84in
Package Contents	SPZ-50 Body, Pole Stand with Focus Mount 26800B-511, Polarized Ring Light 26200B-214

120 LED Ring
Light w/
Polarizer

Reduces
Glare

Includes 10x
Eyepieces

6.7x—50x
Magnification

High-Grade
Optics

Unibody
Design

Heavy Duty
Stand w/
Focus Mount

Fine and
Course Focus

SPZ-50 Stereo Zoom Binocular Microscope System and Ring Light w/Adjustable Polarizer

FEATURES

- Multi-coated optical components and unibody design
- Magnification: 6.7x—50x with included 10x eyepieces
- Best-in-class, large zoom ratio
- 120 LED Ring Light with Adjustable Polarizer reduces glare from reflective subjects
- Heavy duty post stand with focus mount provides coarse and fine focus adjustments

SPZ-50E STEREO ZOOM BINOCULAR MICROSCOPE SYSTEM & RING LIGHT W/ ADJUSTABLE POLARIZER

Item #	26800B-373-2
Illumination	120 LED Ring Light w/ Adjustable Polarizer
Eyepieces	10x wide field (FN: 23) 45° inclined
Objective Lens	0.67x—5.0x
Magnification	6.7x—50x
Working Distance	108mm / 4.25in
Zoom Ratio	7.46:1
Field of View	34.3mm—3.6mm / 1.4in—0.14in
Interpupillary Distance	52mm—75mm / 2.05in—2.6in
Diopter Adjustment	+/- 7.2 D in both eyepiece tube
Optical System	Greenough
Stand Type	Heavy Duty Post
Base Dimensions	279mm x 330mm / 10.98in x 12.99in
Pole/Track Height	406mm / 15.98in
Package Contents	SPZ-50 Body, Heavy Duty Post Stand 26800B-570, Ring Light w/ Adjustable Polarizer 26200B-222, Ring Light Adapter 26800B-460, Focus Mount 26800B-517

High-Grade Optics, Durable Components

Aven's SPZ-50 Stereo Zoom Binocular Microscope on the Heavy Duty Post Stand offers the best-in-class zoom ratio with super sharp 3D images, wide field of view, and long working distance. Magnification range of 6.7x-50x with the included 10x eyepieces, and additional lenses and eye pieces can increase the range up to 200x. Unibody construction and multi-coated optical components assure excellent contrast and definition of 3D images from edge-to-edge. The 120 LED Ring Light with Adjustable Polarizer features a built-in brightness dial and level of polarization adjustment. The polarized ring light significantly reduces the glare from reflective parts, allowing operators to see details that would otherwise be obscured or washed out. The 16in Heavy Duty Post Stand provides durability with its metal construction.



SPZ-50 Stereo Zoom Microscope/Integrated LED Ring Light

Illumination is securely installed

One-piece system adds convenience and peace of mind

This inspection and laboratory microscope offers a best-in-class zoom ratio with sharp 3D images, wide field of view and large working distance. As another distinctive advantage, the ring light is a secure part of the focus mount. Making the illumination unit an integral component, rather than a screw-on accessory, eliminates the danger of damage from a loosened ring light dropping on products being examined.

Features

- Superior optics and reliable mechanical components
- Magnification: 6.7x to 50x
- Magnification range with optional lenses: 6.7x to 200x
- High eye point of 17mm for comfortable viewing, even for operators with eye glasses
- Large zoom ratio gives this microscope exceptional versatility
- Multi-coated optical components, free from chromatic and spherical aberration
- Crystal clear high resolution images
- Double arm boom stand allows positioning of the microscope over large areas
- Tilt able arbor enables you to angle the microscope for maximum comfort and viewing
- Integrated 60 LED Ring Light with dimmer

SPZ-50 STEREO ZOOM MICROSCOPE	
ILLUMINATION	60 LED Ring Light, 5600K White, 35,000 LUX
LIGHTING CONTROL	Variable
BODY	Binocular
OBJECTIVE LENS	0.67x to 5.0x
MAGNIFICATION	6.7x to 50x
EYEPIECE	10x Wide Field (FN:23), 45 ° Inclined
INTERPUPILARY DISTANCE	52 to 75mm
DIOPTER ADJUSTMENT	+/- 7.2 D in both eyepiece tube
OPTICAL SYSTEM	Greenough
STAND TYPE	Double Arm Boom Stand with Tilt able Arbor
BASE DIMENSIONS	285 x 260 x 18mm
POLE/TRACK HEIGHT	380mm; Extension Post: 225mm
ACCESSORIES INCLUDED	Dust Cover Rubber Eye Guards Tension Control Pin
WEIGHT	75lbs
PACKAGE CONTENTS	Double Arm Boom Stand with arbor 26800B-535; Integrated LED Ring Light with Focus Mount 26800B-535; SPZT Stereo Zoom Binocular Body

Part #	Description
26800B-369	SPZ-50 Stereo Zoom Microscope w/ Integrated LED Ring Light on DABS