



Tools for
Advancing
Innovation

Built-In
Measurement
Software
Mosaic 2.1

HDMI, USB
and SD Card
Outputs
Capture & Save
Images Directly
To SD Card

Auto Focus
**FULL HD
1080p**

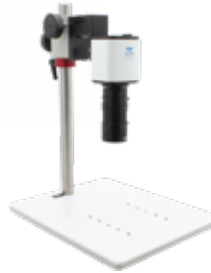
60fps
HDMI
30fps
SD Card, PC
and USB



Mighty Cam Pro

Auto Focus HDMI/USB/SD

Aven's Mighty Cam Pro is an all-in-one inspection auto-focus camera. This camera offers both USB and HDMI outputs for inspection from an HD monitor or your PC via the included Mosaic software. This camera features integrated measurement capabilities for measuring without a PC. This camera also features a built-in SD card port for capturing instant high resolution images with no need for a PC.



Macro Lens



Micro Lens



Mighty Cam Pro Features:

- Camera offers both continuous and single-shot auto focus modes.
- Data transfer up to 60 frames per second
- HDMI, USB2.0 and SD card outlets
- Save images directly to SD card *no computer required*
- Includes software Mosaic 2.1
- Attachable lenses available for purchase
- Attachment on back of camera to easily attach to N-Mount
- Real time image stitching
- Perfect color reproduction
- Professional digital image measurement software system

Mosaic 2.1

Imaging Software

Flip over to read more about this software



Mighty Cam Pro	
Item Number	26100-258
PC Software	Mosaic 2.1
Resolution	2MP 1920x1080
Frame Rate	60 fps @HDMI, 30fps @USB2.0
Video Recording	30fps @SD Card, 30 fps @PC
Outputs	HDMI, USB2.0 and SD Card
Package Contents	Mighty Cam Pro, power supply, a USB Mouse and an SD Card

Mighty Cam 3.0

USB 6 Megapixel Sensor & Imaging Software

6 Megapixel
Sensor

Stunning High-
Resolution

USB 3.0
Output

Minimal Lag
Time

Save & Share
Images

Imaging
Software



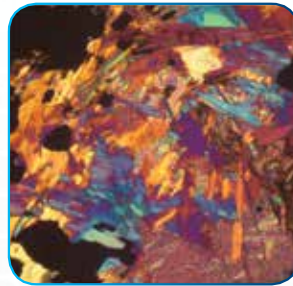
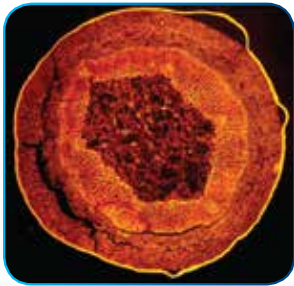
Professional Sony 6M
CMOS Sensor



Easy Plug-and-Play USB
3.0 Output

Universal
c-mount

Shown on
an Aven
Stereo Zoom
Microscope



Inspect from your Computer in Real Time

Introducing Aven's Mighty Cam USB 6M CMOS Camera with imaging and measurement software. Create stunning images with outstanding clarity then measure, annotate and analyze easily with Mosaic 2.0. The Mighty Cam is equipped with a 6 megapixel sensor and a USB 3.0 output, providing stunning, true-to-life images with minimal lag time.

- 6 megapixel sensor
- Universal c-mount lens
- USB 3.0 output for stunning images at minimal lag time
- Imaging and measurement software to save, share, and manipulate images

MIGHTY CAM 3.0 USB CAMERA W/ IMAGING SOFTWARE

SKU	26100-244
SENSOR	CMOS, 1/1.8"
PIXEL SIZE	2.4 x 2.4(µm)
RESOLUTION	3072(H) x 2048(V)
FRAME RATE	40fps @6MP
SHUTTER MODE	Global
CONFIGURATION	CPU: Intel Core i5 or better (Quad or more Core), RAM: 8G or more, OS: Windows 7/8/10 64bit
WEIGHT	330g
PRICE	\$749.00



Tools for
Advancing
Innovation



Mighty Cam Eidos

2M Camera With Integrated 11.6" HD Monitor

Aven Mighty Eidos - Integrated HD monitor and inspection camera. Connect to any C/CS mount microscope or video lens. View High Res 1080p HD images on the 11.6" LCD monitor. No computer or external monitor required for inspection or image/video capture. Built-in SD card slot and USB output for PC connectivity. Includes wireless mouse to control menu settings.

Connects To Any C/CS Mount Microscope Or Video Lens

Aven's Mighty Cam Eidos combines a 2 megapixel inspection camera with an 11.6" 1080p monitor. Create your own all-in-one inspection system by attaching the Eidos to any C/CS mount microscope or video lens system. Includes a SD card port for image and video capture, no computer required. A USB output is included to connect to a computer for imaging and measurement software. Compatible with Aven's EZ Measure Software.

High Resolution Imaging

1080p Full HD imaging at a max frame rate of 60FPS, without the need to connect to a pc or an external monitor. Connects to any C/CS mount microscope or video lens.

Built-In SD Card Slot

Capture high resolution images and videos directly to an SD card, no computer required.

USB Output Connects To Any Computer

Connect the Eidos to your PC to access imaging and measurement software. Compatible with Aven's EZ Measure software.

Convenient Settings Menu

- Exposure
- White Balance
- Horizontal/Vertical Color Line Grids
- Brightness/Contrast/Sharpness settings
- Freeze Frame
- Compare Mode
- High Dynamic Range
- Image/Video Preview
- More

Tiltable Axis

Monitor tilts back up to 90 degrees.