



**We love that you are rocking JLab!
We take pride in our products and fully stand behind them.**

JLAB®
GO WORK 2
HEADSET



YOUR WARRANTY

All warranty claims are subject to JLab authorization and at our sole discretion. Retain your proof of purchase to ensure warranty coverage.



CONTACT US

Reach out to us at support@jlab.com or visit jlab.com/contact

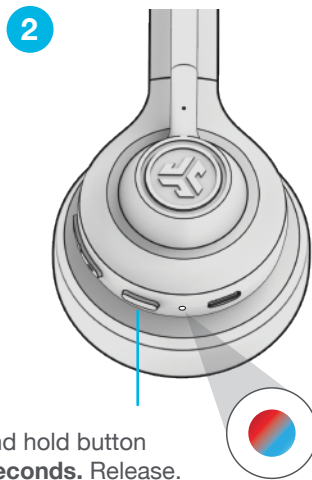
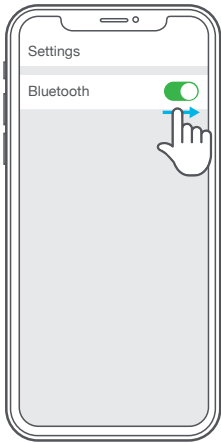
REGISTER TODAY

jlab.com/register

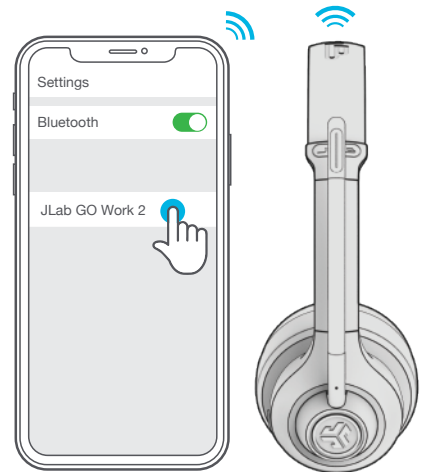
[Product updates](#) | [How-to tips](#)
[FAQs & more](#)

BLUETOOTH CONNECTION

1 Turn on Bluetooth in your device settings.



3 Select "JLab GO Work 2" in your device settings to connect.



MULTIPOINT (CONNECT 2 DEVICES SIMULTANEOUSLY)

Multipoint is supported when connecting to two devices via Bluetooth. The USB-C Dongle and Wired connection methods create dedicated connection channels and do not support Multipoint.

1

Once **FIRST** device is connected, turn off Bluetooth in device settings. GO Work 2 will auto enter Bluetooth Pairing.



2

Enter your **SECOND** device Bluetooth settings and connect to GO Work 2.



3

Enter your **FIRST** device settings. Turn on Bluetooth and reconnect to GO Work 2.



BUTTON FUNCTIONS

VOLUME UP: 1x press
TRACK FORWARD:
Press and hold 2+ seconds

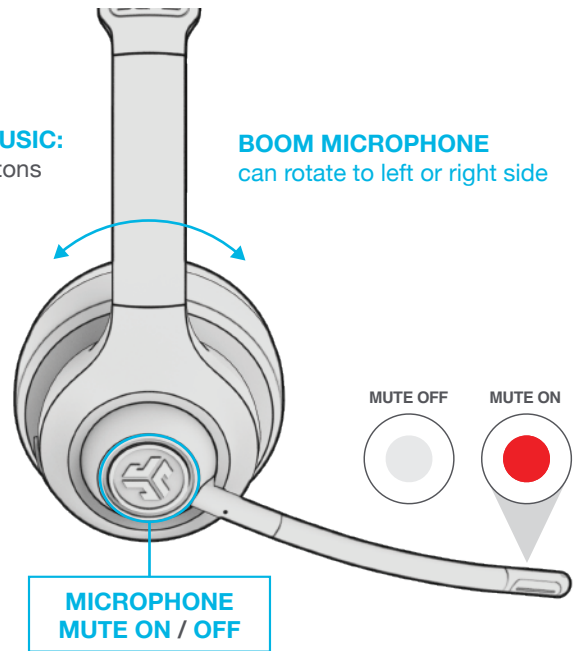
VOLUME DOWN: 1x press
TRACK BACKWARD:
Press and hold 2+ seconds

POWER ON/OFF:
Press and hold 2+ seconds
PLAY/PAUSE/ANSWER/HANG UP CALLS:
1x press
REJECT INCOMING CALL:
Press and hold 1+ second
ACTIVATE SIRI (iOS) OR "OK GOOGLE" (ANDROID): 2x press
HEAR YOURSELF ON/OFF:
3x press (when on call)



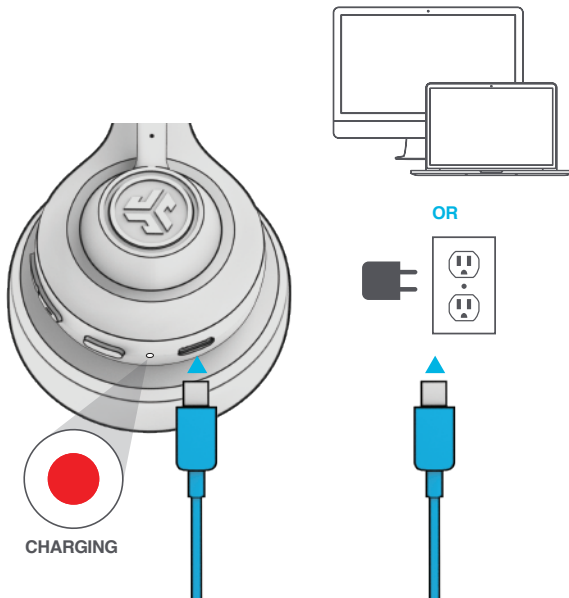
SWITCH EQ VOICE / MUSIC:
Press and hold both buttons simultaneously

BOOM MICROPHONE
can rotate to left or right side



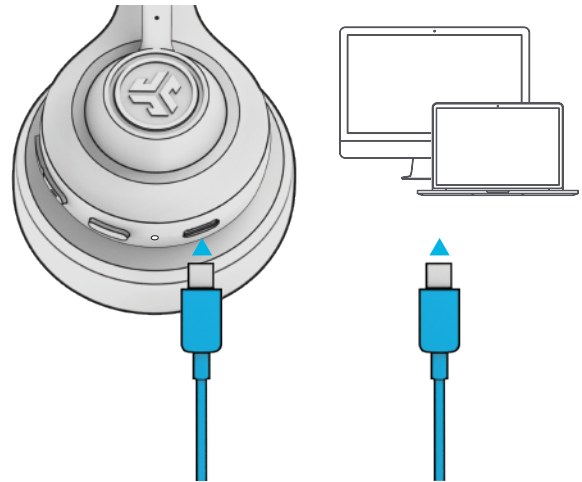
CHARGING

Connect to computer or USB 5v 1A (or less) output device.



WIRED CONNECTION

Connect the GO Work 2 cable to computer.
Check your PC/Mac Input and Output settings.



DOWNLOAD THE APP

Customize GO Work 2 features and update the latest software.



TROUBLESHOOTING

WINDOWS 7/8/10/11: NO MICROPHONE AUDIO

Depending on your PC, the Bluetooth might not detect the proper Bluetooth protocol. This is a known issue with certain Windows OS.

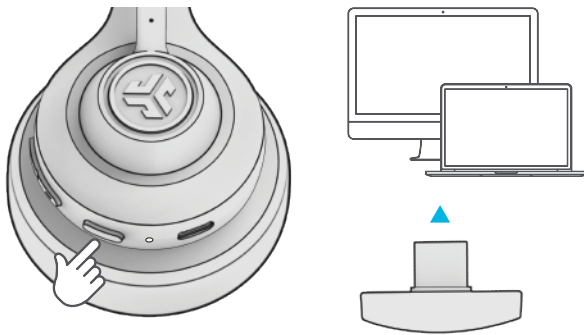
1. Open the Bluetooth & Device settings and enter the View more devices tab.
2. Remove all Bluetooth devices that are already connected.
3. Reconnect your GO Work 2 FIRST to your PC, followed by other Bluetooth devices. The GO Work 2 should display "Connected voice, music".

USB-C DONGLE CONNECTION

1

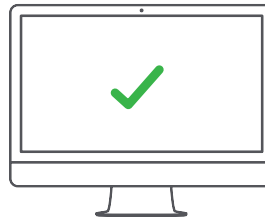
Power on GO Work 2 and plug in USB-C dongle into PC/Mac/Android. (avoid hubs/adapters)

This connection will override any current Bluetooth connections.



2

Check your device settings.



SETUP DONGLE WITH PC (WINDOWS 7/8/10/11)

1. From the Start menu, select the Control Panel.
2. From the Control Panel, select the Sound icon.
3. Select the Recording tab and select "JLab GO Work 2".
4. Select the Playback tab and select "JLab GO Work 2".

SETUP DONGLE WITH MAC (macOS 10.10 or HIGHER)

1. Open System Preferences and select the Sound icon.
2. Select the Input tab and select "JLab GO Work 2".
3. Select Output tab and select "JLab GO Work 2".
4. From this screen, set the Output volume to desired level.



[Shop products](#) | [Product alerts](#) | [Burn-in your headphones](#)

JLab Store + Burn-in Tool

