


# **PRODUCT CATALOGUE**

# **2024**

[www.cotoia-eg.com](http://www.cotoia-eg.com)

COTOIA

 [cotoiaegy](https://www.instagram.com/cotoiaegy)

# I. Product Range

- T-shirts
- Tanktops
- Hoodies
- Zip ups
- Crewnecks
- Sweatpants/ - shorts
- Cargo pants / - shorts
- Jeans / Jorts
- Got something else in mind? Don't hesitate to contact us!

## II. Fabrics

*Choosing the fabric is one of the hardest stages of developing your product, as you have to cater it perfectly to your product; depending on the fit, season and overall look and feel of the piece. That's why we gathered the most used fabrics in the fashion industry for you to pick from depending on what piece you want to produce.*



*The most widely used materials are*

- *Jersey for T-Shirts*
- *Rib for Tanktops*
- *Fleece for Hoodies, Zip-Ups, Crewnecks, Sweatpants & Sweatshorts*
- *French Terry for Sweaters*
- *Denim for Jeans, Jorts, Cargo Pants & Shorts*
- *Twill for Cargo Pants & Shorts*
- *And many more...*



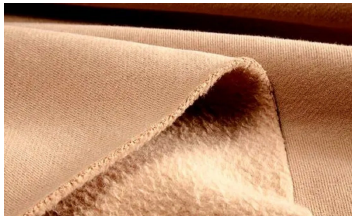
*Jersey is the most commonly used material with t-shirts. It's the #1 pick for most luxury brands such as Balenciaga, Maison Margiela and many others...*

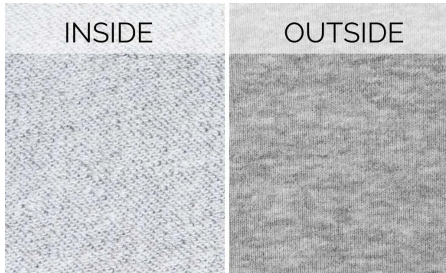


**Rib** comes in many forms and types, and it is mostly used for Tanktops, as it's renowned for elasticity, providing the perfect level of stretch without causing any distortion to their original shape. The alternating stitches are designed to stretch in both directions, accommodating all body shapes and sizes and acting as a super-soft second skin.



*Fleece is the by far the most popular material used for Hoodies, Zip-Ups, Crewnecks, Sweatpants & Sweatshorts. They have a smooth outside feel and a plush feel on the inside. It is optimal for colder weather.*





*French Terry is a very good choice for Hoodies and Sweatshirts along with Fleece. It has a more solid feel to it and is more breathable and optimal for warmer weather.*

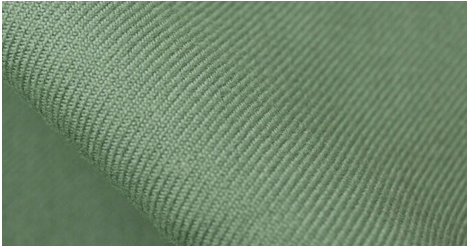




*Denim Ranges from 10oz (ounce per square yard) all the way up to 16oz. It can be used for Jeans, Jorts, Cargo Pants, Jackets and Vests.*



*Twill is a material used mostly for cargo pants, cargo shorts & jackets. It is known for its durability and is perfect for all seasons.*



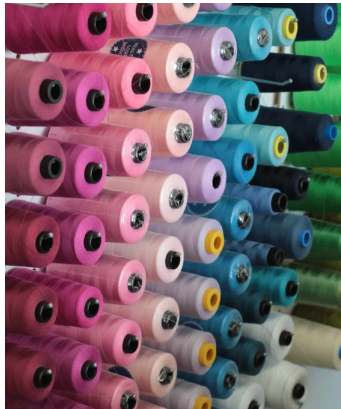
# ***Sustainability***

*We are deeply committed to sustainability in our production process. In our endeavor to minimize waste and reduce our environmental impact, particularly for smaller quantities, we place a premium on sourcing deadstock fabrics. This approach not only ensures the preservation of valuable resources but also guarantees the delivery of superior-quality materials for your design needs.*

# ***Custom Fabric Customization:***

If you don't want us to source you a fabric and choose to do your own (with customized GSM / Pantone Color / Wash) then, contact us with your Ideas and we will turn them into reality!

Note: This will require a higher MOQ than usual, depending on which material and specifications you want.



# Why Egyptian Cotton Is Superior.

*Egyptian cotton is famous for its top-notch quality and luxurious texture. Cultivated along the fertile Nile River, it features long fibers that make it incredibly soft, strong, and durable. This cotton is highly absorbent and breathable, perfect for creating luxuriously comfortable fabrics that last. With its exquisite craftsmanship and timeless appeal, Egyptian cotton products are adored for their unmatched quality and lavish feel. It's the top choice for those who value both sustainability and luxury in their textiles.*



# III. Prints

## *DTF: Direct to Film*

*Direct to Film (DTF) printing involves transferring designs from a printed film onto fabric using a specialized printer and heat press. The design is printed onto a thin, heat-sensitive film which is then transferred onto the fabric*



## **DTG: Direct to Garment**

*Direct to Garment (DTG) printing involves printing designs directly onto fabric using specialized inkjet technology. The ink is applied directly onto the garment, and the design is cured using heat to ensure durability*



## **Screen Printing:**

*Screen printing involves transferring designs onto fabric by pressing ink through a mesh screen stencil onto the material. Each color in the design requires a separate screen, and the ink is applied layer by layer onto the fabric.*





## **Plastisol Screen Printing:**

*This method utilizes plastisol ink, a PVC-based (polyvinyl chloride) ink known for its durability. Plastisol prints have a slightly heavier feel due to the ink's composition. The screen print paste used in this technique adds texture, making the print detectable to the touch and highly opaque, especially on fabrics of darker colors.*



## **Water Based Screen Printing:**

Water-based screen printing utilizes water-based inks, offering a more environmentally friendly alternative to traditional methods. Unlike plastisol prints, the ink is absorbed into the fabric, resulting in a texture-free surface that is undetectable to the touch. However, it's important to note that water-based inks may not provide the same level of opacity on dark garments as plastisol prints.



**Puff Print:**

*Puff Print is a Type of Screenprint, where a special type of ink is used; which raises when exposed to heat. It has a rubbery feel.*



## **Embroidery:**

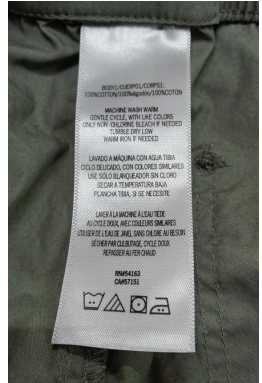
*Machine embroidery adds sophistication to our garments, with flawlessly stitched designs that elevate our collection's appeal for those who appreciate refined style.*



# IV. Product Labels

**We offer:**

- *Woven Labels*
- *Canvas Labels*
- *Twill Labels*
- *Washtags*



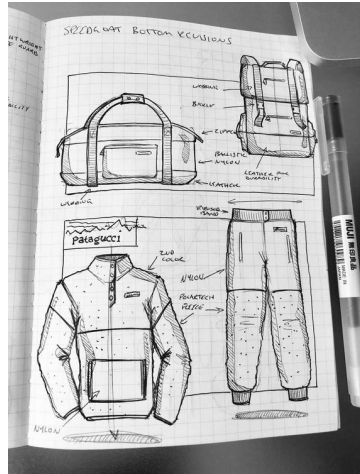
*Due to the high MOQ of the labels,  
some people opt to a "tagless label"  
and print on the inside of the neck*



# VII. Samples

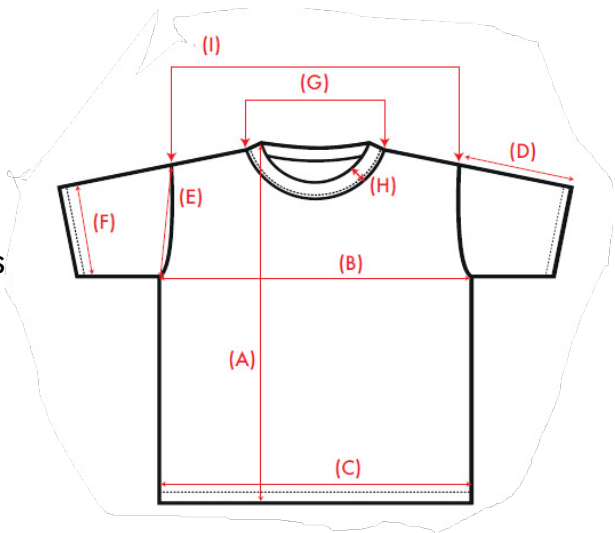
Fill out our Tech Pack with all the needed info and try to be as specific as possible and attach references and a description.

We will respond to you with a quote within 2-3 business days.



## **Sizing / Fit:**

You have the option to select from our range of pre-made size charts or create your own. For the most accurate sizing, we recommend taking measurements directly from your favorite garment.





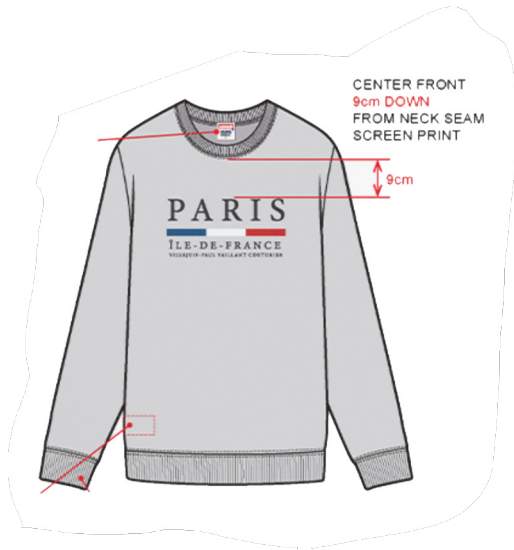
***Fabric:***

*Choose from our range of fabrics or  
make your own customized fabric  
from scratch*



### **Print / Embroidery:**

Add your desired print or embroidery to your mockup, with the exact sizing and positioning. For best results attach your AI File(Adobe Illustrator) of the design.



# ***Add as many references as possible!***

*Adding reference Pictures for the desired wash, color or stitching of the garment will help us bring your ideas to life and match the sample with your vision.*

# Lead Time:

*Sample Development takes between 2-3 weeks.*

*After you see and approve the samples you can start directly with bulk production, which will take between 3-6 weeks from the minute you send your payment until it's on your doorstep.*



# ***READY TO START?***

Upload your techpack now on our website  
and let's bring your vision to life!

[www.cotoia-eg.com](http://www.cotoia-eg.com)

COTOIA

 cotoiaegy