



OWNERS MANUAL VERIPUREVP5000

REVISED 5/27/2020

THANK YOU FOR CHOOSING VERIPURE®

PLEASE TAKE A FEW MOMENTS TO FILL IN THE INFORMATION BELOW, SAVE THIS MANUAL AS A CONVENIENT INFORMATION SOURCE FOR YOUR VERIPURE® SYSTEM.

Date of Purchase:	
Purchased From:	
Phone Number:	
Serial Number:	
Installed By:	
Dealer Name:	
Dealer Phone	



2425 HUTSON ROAD
GREEN BAY WI, 54304
(920) 613-6771

PERFORMANCE DATA SHEET

Model VPC5000 & Model VP5000



This system has been tested by WQA according to NSF/ANSI 42 and 53 for the reduction of the substances listed below. The concentration of the indicated substances in water entering the system was reduced to a concentration less than or equal to the permissible limit for water leaving the system, as specified in NSF/ANSI 42 and 53. While testing was performed under standard laboratory conditions, actual performance may vary. Do not use with water that is microbiologically unsafe or of unknown quality without adequate disinfection before or after the system. Systems certified for cyst reduction may be used on disinfected waters that may contain filterable cysts.

Stage One — Filtration Process:

The VeriPure Maintenance Kit- Consists of a two filter configuration that is a proprietary design of VeriPure, Inc. The first filter is a sediment filter that greatly reduces suspended and particulate matter from the incoming water source. The second filter (a carbon block filter for cyst removal, lead and chlorine reduction) greatly reduces free chlorine and cysts from the water source to disinfect and improve the taste and odor of the water.

Carbon Block Filter Data

Parameter	Reduction Requirement	Max Permissible Water Concentration
Chlorine	>=50%	
Cyst	>=99.95%	
Lead		0.01 mg/L

Operating Specifications:

Capacity: 1,250 Gallons Lead Reduction

Flow Rate: 0.50 to 1.0 GPM

Minimum Pressure: 50 PSI

Maximum Pressure: 125 PSI

Temperature: 35-90 F (2-32 C)

IMPORTANT SAFEGUARDS AND PRECAUTIONS

- INSTALL YOUR VERIPURE® SYSTEM IN COMPLIANCE WITH STATE AND LOCAL LAWS AND REGULATIONS FOR PLUMBING AND ELECTRICAL CODES. **AS WITH ANY WATER DEVICE, PLEASE CHECK YOUR SYSTEM FOR LEAKS ON A REGULAR BASIS. CONTACT A PLUMBER IMMEDIATELY**
- VERIPURE® PERFORMANCE IS BASED UPON INPUT WATER WHICH MEETS MINIMUM EPA NATIONAL PRIMARY AND SECONDARY DRINKING WATER STANDARDS.
- SEE WWW.EPA.GOV/DWSTANDARDSREGULATIONS
- **YOUR VERIPURE® SYSTEM IS DESIGNED TO BE USED ONLY WITH ALREADY DEEMED POTABLE WATER BY YOUR LOCAL WATER UTILITY**

ATTENTION: THIS UNIT IS DESIGNED FOR TREATMENT OF **COLD WATER ONLY!**

- **READ INSTRUCTIONS-** ALL SAFETY AND OPERATING INSTRUCTIONS SHOULD BE READ BEFORE THE UNIT IS OPERATED.
- **RETAIN INSTRUCTIONS-** SAFETY AND OPERATING INSTRUCTIONS SHOULD BE KEPT IN AN ACCESSIBLE LOCATION FOR FUTURE REFERENCE.
- **FOLLOW INSTRUCTIONS-** ALL INSTRUCTIONS SHOULD BE FOLLOWED FOR MAINTAINING AND OPERATING YOUR VERIPURE® SYSTEM PROPERLY.
- **MAINTENANCE PRECUATIONS-** ALWAYS TURN OFF THE WATER SUPPLY AT THE SINK OR WATER SOURCE AND UNPLUG POWER JACK FROM THE VERIPURE® SYSTEM BEFORE PERFORMING ANY MAINTENANCE.
- **ACCESSORIES-** DO NOT USE ANY ACCESSORIES, INCLUDING FILTER CARTRIDGES THAT ARE NOT RECOMMENDED BY VERIPURE®
- **WATER AND MOISTURE-** DO NOT ALLOW MOISTURE TO CONTACT ANY INTERNAL OR EXTERNAL ELECTRONIC COMPONENTS. SHOULD A LEAK OCCUR, IMMEDIATELY SHUT OFF THE WATER SUPPLY AND CONTACT YOUR DEALER OR DISTRIBUTOR FOR SERVICE.
- **POWER SOURCES-** YOUR VERIPURE® SYSTEM SHOULD ONLY BE OPERATED FROM THE TYPE OF POWER SOURCE INDICATED ON YOUR AC ADAPTER. IF YOU ARE NOT CERTAIN OF THE TYPE OF POWER SUPPLY TO THE OUTLET PLEASE CONSULT YOUR VERIPURE® DEALER OR POWER COMPANY. ALTERNATIVE POWER SUPPLY ADAPTERS FOR VOLTAGES FOUND IN MANY COUNTRIES OUTSIDE THE UNITED STATES ARE AVAILABLE THROUGH YOUR DEALER ON SPECIAL ORDER. YOUR VERIPURE® SYSTEM MAY ALSO BE OPERATED WITH A BATTERY PACK OR GENERTOR.
- **POWER CORD PROTECTION-** VERIPURE® RECCOMENDS THAT POWER SUPPLY CORDS SHOULD BE ROUTED SO THAT THEY ARE NOT LIKELY TO BE WALKED ON OR PINCHED BY ITEMS PLACED UPON OR AGAINST THEM.

HOW YOUR VERIPURE® SYSTEM WORKS

YOUR PATENTED VERIPURE® SYSTEM HAS BEEN DESIGNED TO USE TWO STAGES OF PRIMARY FILTRATION AND LOW LEVEL OZONE TECHNOLOGY®. OPERATIONAL MAINTENANCE AND REPLACEMENT REQUIREMENTS ARE ESSENTIAL FOR THE VERIPURE® SYSTEM TO PERFORM TO SPECIFICATIONS. CONTACT YOUR LOCAL DEALER OR DISTRIBUTOR FOR REPLACEMENT FILTERS AND PARTS, OR CONTACT VERIPURE FOR THE DEALER NEAREST YOU. THE VERIPURE® SYSTEM IS RECCOMENDED TO BE CONNECTED TO MUNICIPAL WATER SOURCES.

FOOD & SURFACES

GENERAL RECOMENDATIONS FOR USING OZONATED WATER ARE AS FOLLOWS-

- PLACE ITEM OR ITEMS TO BE WASHED UNDER A STEADY STREAM OF VERIPURE® WATER AND RINSE.
- FOOD PREPARATION: IT IS RECOMMENDED ITEMS BE RINSED FOR 3 MINUTES WITH VERIPURE® WATER.
- FOOD ITEMS: PLACE IN A BOWL, COLANDER OR STRAINER. RINSE WITH VERIPURE® WATER.

STORING WATER

- SELECT A CONTAINER THAT IS FOOD GRADE QUALITY, SUCH AS GLASS OR STAINLESS STEEL. THOROUGHLY RINSE THE CONTAINER WITH VERIPURE® WATER AT LEAST TWICE. FILL THE CONTAINER TO WITHIN ONE TO TWO INCHES FROM THE TOP AND REPLACE CAP.
- STORE WATER IN REFRIGERATOR AND MAKE CERTAIN THE CAP IS REPLACED AFTER EVERY USE.
- WHEN WATER IS FRESHLY OZONATED YOU MAY INITIALLY BE ABLE TO DETECT A SLIGHT HINT OF OZONE. PEOPLE VARY IN THEIR SENSITIVITY TO OZONE. ANY HINT OF THE OZONE TASTE WILL DISAPPEAR WITHIN A SHORT PERIOD OF TIME. YOUR SYSTEM PRODUCES MINIMAL WASTE WHILE PRESERVING MINERALS IN YOUR WATER.

IMPORTANT NOTE: VERIPURE® PERFORMANCE IS BASED UPON INPUT WATER WHICH MEETS MINIMUM EPA NATIONAL PRIMARY AND SECONDARY DRINKING WATER STANDARDS.

SEE WWW.EPA.GOV/DWSTANDARDSREGULATIONS

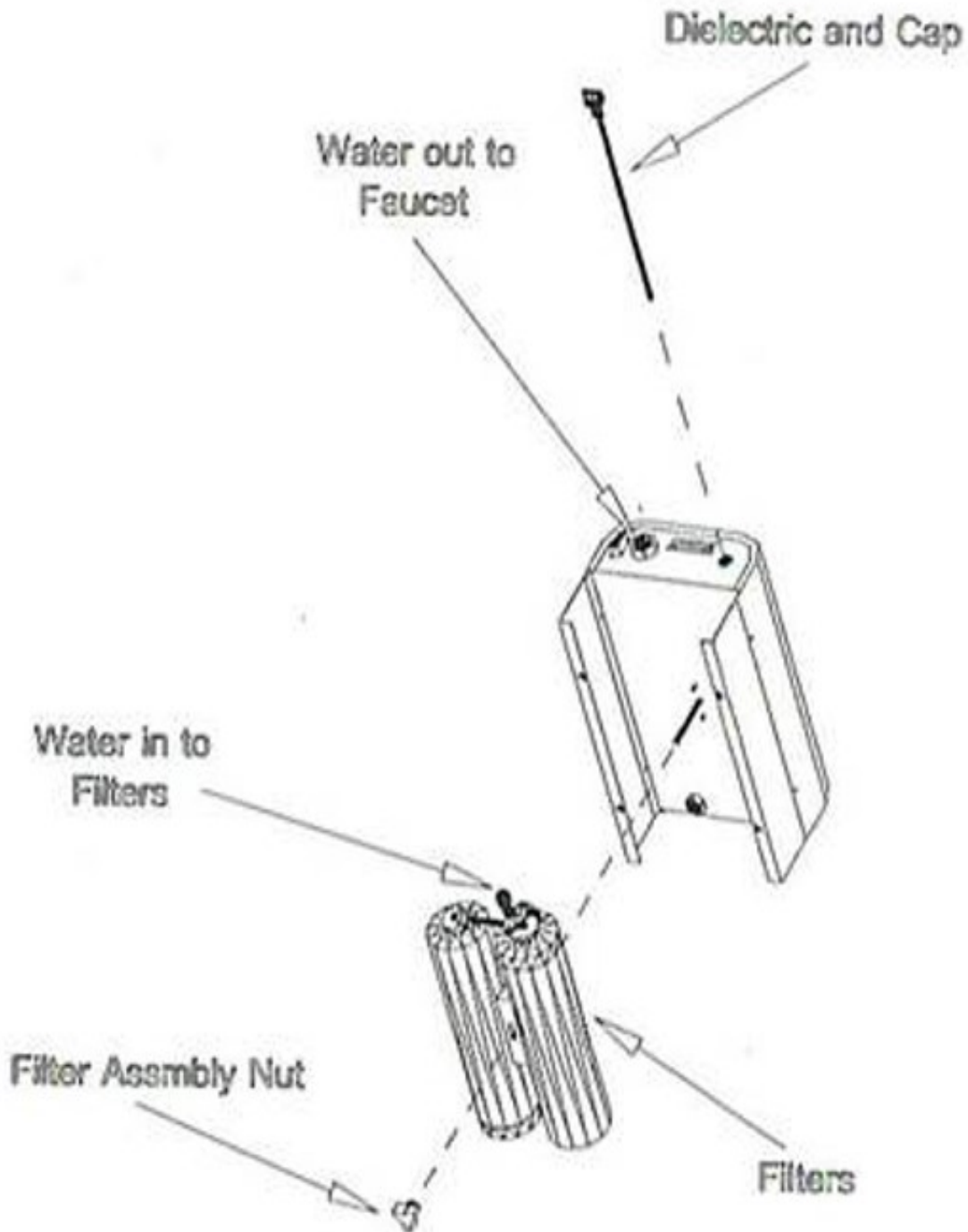
CAUTION: IF IRON OR MAGANESE IS PRESENT IN THE WATER SOURCE IN CONCENTRATIONS EXCEEDING .1PPM, PRE-TREATMENT FOR THESE SUBSTANCES MAY BE REQUIRED.

A LOOK AT YOUR VERIPURE® SYSTEM

UNIT DIMENSIONS: 11.5" L X 6" W X 6.75" H 9.0LBS (4.05KG)

IT IS IMPORTANT TO BE FAMILIAR WITH CERTAIN COMPONENTS OF YOUR VERIPURE® SYSTEM FOR MAINTENANCE PURPOSES.

DIAGRAM 1



INSTALLATION INSTRUCTIONS

BEFORE INSTALLING

1. YOUR VERIPURE® SYSTEM **IS DESIGNED TO BE USED WITH COLD WATER ONLY**.
2. **NEVER RUN WARM OR HOT WATER** THROUGH YOUR VERIPURE® SYSTEM AS HOT WATER CAN DAMAGE THE CARBON BLOCK FILTER.
3. **WATER TEMPERATURES** ABOVE 90° F CANNOT CONTAIN DISSOLVED OZONE; THUS ELIMINATING DISINFECTION. WATER TEMPS APPROACHING 85° F REQUIRE LONGER PERIODS OF CONTACT TIME FOR DISINFECTION PURPOSES.
4. **FOR OPTIMAL PERFORMANCE** , LIMIT YOUR VERIPURE® SYSTEM TO 70 PSI OF WATER PRESSURE. VERIPURE® RECOMMENDS A MINIMUM WATER PRESSURE OF 60 PSI. LOW WATER PRESSURE WILL CAUSE YOUR VERIPURE® SYSTEM TO PRODUCE A LOWER QUANTITY OF FILTERED AND OZONATED WATER.
5. **POWER REQUIREMENTS** ARE 120 VAC 60 HZ. USE AC ADAPTER PROVIDED WITH YOUR SYSTEM.

NOTE: VERIPURE® UNITS ARE DESIGNED TO BE UNDER CONTINUAL WATER PRESSURE WHEN INSTALLED AND NOT IN USE, THE ON/OFF VALVE AND OR FAUCET SHOULD BE ON THE OUTLET OF THE VERIPURE AT OR BETWEEN THE POU AND VERIPURE® UNIT. THIS ENSURES PROPER FUNCTION ON THE VERIPURE® .

◆ VP5000 INSTALLATION INSTRUCTIONS BEGIN ON NEXT PAGE (PAGE 8)

VP5000 INSTALLATION INSTRUCTIONS

◆ UNDER THE COUNTER MODEL

- DUE TO VARIANCE IN PLUMBING AND POWER OUTLETS; WE RECOMMEND THAT A PLUMBER AND OR ELECTRICIAN INSTALL YOUR VERIPURE® SYSTEM BY FOLLOWING THESE INSTALLATION INSTRUCTIONS. IF YOU CHOOSE TO INSTALL THE UNIT YOURSELF PLEASE CALL 920.613.6771 FOR ASSISTANCE.
- INSTALLATION OF THE VERIPURE® SYSTEM MUST CONFORM TO STATE AND LOCAL PLUMBING AND ELECTRICAL CODES, LAWS, AND REGULATIONS AND THE INSTRUCTIONS PROVIDED WITH YOUR VERIPURE® SYSTEM. **FAILURE TO INSTALL AS INSTRUCTED WILL VOID THE WARRANTY.**

NOTE: YOU MAY HAVE AN EXISTING POWER OUTLET UNDER THE SINK TO POWER A GARBAGE DISPOSAL. TYPICALLY, THERE IS ONLY POWER TO THIS OUTLET WHEN THE SWITCH FOR THE DISPOSAL IS TURNED ON. IF THIS IS THE CASE AN ELECTRICIAN WILL NEED TO INSTALL AN ADDITIONAL POWER OUTLET.

PLEASE CHECK YOUR VERIPURE® SYSTEM TO BE CERTAIN ALL ITEMS LISTED BELOW ARE INCLUDED.

- QTY 1 AC ADAPTER (POWER SUPPLY) WITH OUTLET PLUG
- QTY 1 FAUCET ASSEMBLY
- QTY 1 FAUCET MANUFACTURES INSTRUCTION SHEET
- QTY 1 3/8" TUBING 4' IN LENGTH (OUTLET HOSE TO FAUCET)
- QTY 1 1/4" TUBING 4' IN LENGTH WATER SUPPLY TO FILTER INLET
- QTY 1 ANGLE STOP ADAPTER ON/OFF TEE
- QTY 1 MOUNTING PLATE
- QTY 1 OWNERS MANUAL
- QTY 3 MOUNTING SCREWS
- QTY 1 SPANNER TOOL
- QTY 1 HEX WRENCH



FAUCET INSTALLATION INSTRUCTIONS

VERIPURE® RECOMMENDS THAT THE LOCATION OF THE FAUCET HOLE BE DETERMINED AT THE TIME OF INSTALLATION. MOST KITCHEN SINKS ARE EQUIPPED WITH A THIRD FAUCET OPENING LOCATED TO THE RIGHT OF THE MAIN FAUCET. USUALLY THIS OPENING IS USED FOR A SPRAYER AND IS THE MOST COMMON CHOICE FOR THE VERIPURE® SYSTEM FAUCET.

*****DUE TO VARIANCES IN COUNTER TOP MATERIALS AND SINK DESIGN, WE RECOMMEND USING A CERTIFIED PLUMBER FOR YOUR FAUCET INSTALLATION.**

FAUCET OPENING

INSTALLING THE VERIPURE® SYSTEM FAUCET TO THE RIGHT SIDE OF THE COLD WATER SIDE IS PREFERABLE. IT IS RECOMMENDED THAT IF DRILLING A NEW OPENING, THE OPENING BE COMPLETED AT THIS TIME.

VP5000 INSTALLATION INSTRUCTIONS (CONTINUED)

◆ UNDER THE COUNTER MODEL

STEP 1: PLEASE INSPECT YOUR VERIPURE® SYSTEM GLASS DIELECTRIC TUBE AT THIS TIME. LOCATE THE KNOB ON YOUR VERIPURE® SYSTEM. TURN 1/4 COUNTER CLOCKWISE AND **PULL STRAIGHT OUT VERY CAREFULLY.** INSPECT THE DIELECTRIC FOR ANY CRACKS OR BREAKAGE THAT MAY HAVE OCCURRED IN SHIPPING. IF NO DEFECTS ARE FOUND THEN GENTLY REPLACE DIELECTRIC. WHEN REPLACING DIELECTRIC, TURN 1/4 CLOCKWISE TO LOCK IN PLACE.

STEP 2: LOCATE THE POWER OUTLET FOR THE POWER SUPPLY.

STEP 3: SHUT OFF THE COLD WATER SUPPLY UNDER THE SINK OR FROM THE MAIN SOURCE.

STEP 4: REMOVE THE COLD WATER FEED LINE TO THE FAUCET FROM THE COLD WATER SUPPLY VALVE.

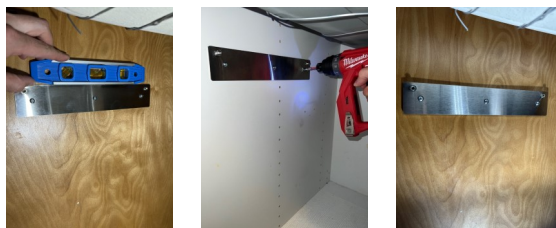
STEP5: THREAD THE FEMALE THREADED END OF THE ANGLE STOP TEE TO THE COLD WATER SUPPLY VALVE.

STEP6: THREAD THE COLD WATER FEED LINE INTO THE MALE THREADED END OF THE ANGLE STOP TEE.



STEP 7: LOCATE THE BEST AREA FOR HANGING THE VERIPURE® SYSTEM. (MAKE CERTAIN THE INLET ASSEMBLY AND OUTLET TO FAUCET HOSES AND THE POWER SUPPLY CORD ARE LONG ENOUGH WHEN SELECTING THIS LOCATION.)

STEP 8: INSTALL THE MOUNTING PLATE FOR THE VERIPURE® SYSTEM BY USING THE PROVIDED MOUNTING PLATE AND HARDWARE. BE SURE PLATE IS LEVEL WHEN MOUNTED.(SOME INSTALLS MAY REQUIRE ADDITIONAL HARDWARE)

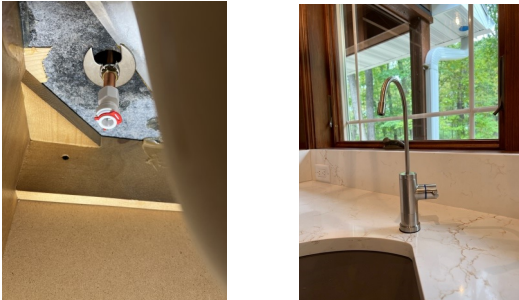


STEP 9: MOUNT YOUR VERIPURE® SYSTEM ONTO THE MOUNTING PLATE PREVIOUSLY INSTALLED AND TIGHTENS THE 2 SCREWS USING THE PROVIDED HEX WRENCH.

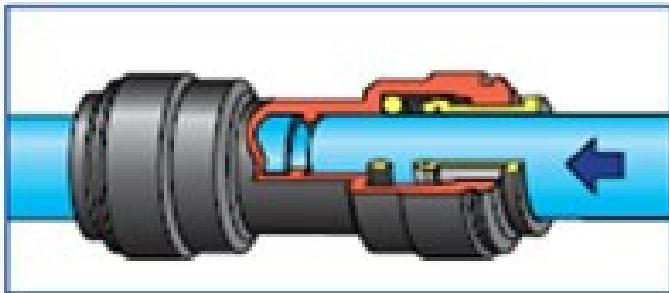


STEP 10: INSTALL YOUR VERIPURE® SYSTEM FAUCET AT THIS TIME.

- ◆ **USE ONLY THE FAUCET SUPPLIED WITH YOUR VERIPURE® SYSTEM!**
- ◆ **DUE TO VARIANCES IN COUNTER TOP MATERIALS AND SINK DESIGN, WE RECOMMEND USING A CERTIFIED PLUMBER FOR YOUR FAUCET INSTALLATION.**
- **ONCE YOUR FAUCET IS SECURELY IN PLACE, THREAD THE 7/16" FEMALE END OF THE 3/8" X 7/16" STRAIGHT FAUCET FITTING ONTO THE THREADED END OF THE FAUCET UNDER THE SINK. NOTE: DO NOT OVERTIGHTEN THIS FITTING AS IT USES A RUBBER ORING TO SEAL. OVERTIGHTENING CAN CRUSH THIS ORING AND CAUSE A POTENTIAL LEAK. HAND TIGHTEN AND THEN 1/4 TO 1/2 TURN WITH WRENCH AT MOST IS TYPICALLY ENOUGH. CHECK FOR LEAKS AFTER WATER IS TURNED ON.**

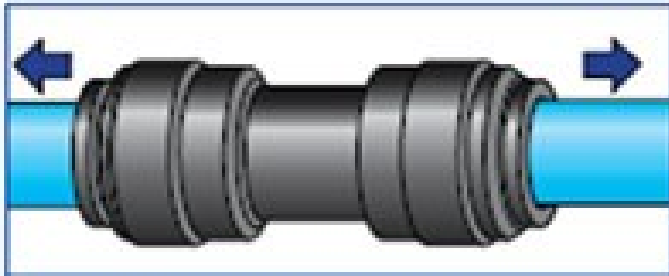


NOW ITS TIME TO CONNECT HOSES AND FITTINGS USING THE QUICK CONNECTIONS . SEE FOLLOWING TUTORIAL.

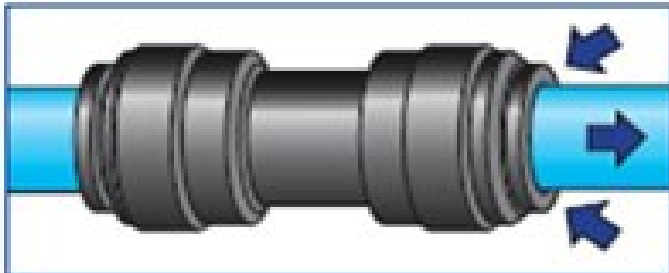


CONNECTING STANDARD PUSH-IN-FITTING

- ◆ PUSH THE TUBING INTO THE FITTING, TO THE TUBING STOP. THE COLLET (GRIPPER) HAS STAINLESS STEEL TEETH WHICH HOLD THE TUBING FIRMLY IN POSITION WHILE THE O-RING PROVIDES A PERMANENT LEAK PROOF SEAL.



- ◆ PULL ON THE TUBING TO CHECK THAT IT IS SECURE. A GOOD PRACTICE IS TO TEST THE SYSTEM PRIOR TO LEAVING THE SITE AND/OR BEFORE USE.



DISCONNECTING STANDARD PUSH-IN FITTING

- ◆ ENSURE THE SYSTEM IS DEPRESSURIZED BEFORE REMOVING FITTINGS. PUSH IN THE COLLET AGAINST THE FACE OF THE FITTING. WITH THE COLLET HELD IN THIS POSITION THE TUBING CAN BE REMOVED. THE FITTING CAN THEN BE RE-USED.

VP5000 INSTALLATION INSTRUCTIONS (CONTINUED)

◆ UNDER THE COUNTER MODEL

STEP 11: CONNECT THE 1/4" WHITE TUBBING TO THE ANGLE STOP TEE. MAKE SURE WHITE TUBBING IS FULLY SEATED INTO FITTING.



STEP 12: CONNECT THE OPPOSITE END OF THE 1/4" WHITE TUBBING TO THE FILTER INLET ELBOW. MAKE SURE WHITE TUBBING IS FULLY SEATED INTO FITTING.



STEP 13: REMOVE THE RED LOCKING CLIP FROM THE 3/8" X 7/16" STRAIGHT FITTING THAT WAS PREVIOUSLY ATTACHED TO THE THREADED PORTION OF THE FAUCET. INSERT ONE END OF THE PROVIDED 3/8" WHITE TUBBING. REPLACE RED LOCKING CLIP AFTER TUBBING HAS BEEN FULLY SEATED.



STEP 14: REMOVE THE RED LOCKING CLIP FROM VERIPURE® UNIT OUTLET. INSERT THE OTHER END OF THE 3/8" WHITE TUBBING INTO THE OUTLET SIDE OF THE VERIPURE® UNIT. REPLACE RED LOCKING CLIP AFTER TUBBING HAS BEEN FULLY SEATED.



VP5000 INSTALLATION INSTRUCTIONS (CONTINUED)

◆ UNDER THE COUNTER MODEL

STEP 15: THREAD THE POWER SUPPLY INTO THE POWER JACK LOCATED ON YOUR VERIPURE® SYSTEM. PLUG THE POWER SUPPLY INTO THE ELECTRICAL OUTLET.

STEP 16: WHEN CERTAIN ALL CONNECTIONS ARE SECURE, TURN ON THE COLD WATER SUPPLY. AT THIS POINT, YOU CAN TURN ON YOUR VERIPURE® SYSTEM FAUCET. AT FIRST, THERE WILL BE AIR IN THE LINES WHICH WILL CREATE AIR BURSTS AND YOUR WATER MAY APPEAR GRAYISH IN COLOR UNTIL THE CARBON FILTER IS THOROUGHLY RINSED. THE GRAY COLOR WILL DISAPPEAR QUICKLY.

FLUSHING INSTRUCTIONS

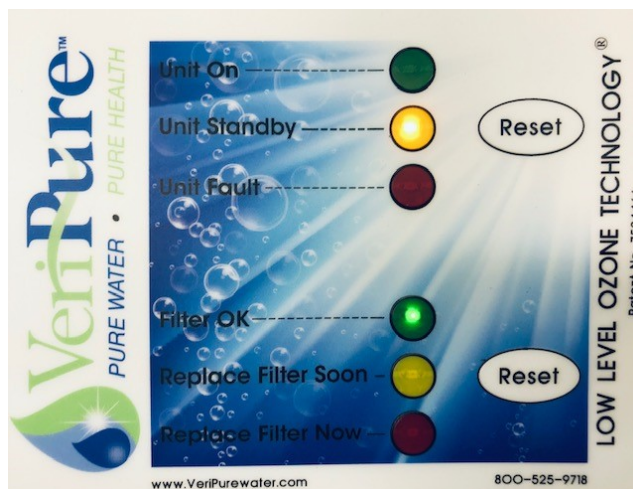
- TURN ON THE WATER SUPPLY AND FLUSH NEW CARTIDGES FOR 3 MINUTES, RUNNING WATER THROUGH THE SYSTEM
- NEW FILTER ASSEMBLIES MAY CONTAIN “CARBON FINES” AND THE WATER MAY BRIEFLY APPEAR GRAY, BUT WILL QUICKLY DISAPPEAR ONCE FLUSHED.
- IMPORTANT– CHECK THAT ALL WATER LINES ARE SECURE AND FIRMLY SEATED WITH NO EVIDENCE OF WATER LEAKAGE. IF A LEAK IS DETECTED, SHUT OFF WATER SUPPLY AND DISCONNECT LINES AND VISUALLY CHECK FOR ANY DEFECTS AT THE END OF LINES. INSERT LINES BACK IN UNTIL FULLY SEATED AND TURN WATER SUPPLY BACK ON. RECHECK FOR ANY LEAKS.

MAINTAINING YOUR VERIPURE® SYSTEM

When performing maintenance as recommended, you should enjoy years of excellent performance from your VeriPure® System. The LED indicator lights will confirm that your VeriPure® System is working properly or if your system is malfunctioning.



INSTALLED VERIPURE®



LED READOUT

There are two maintenance requirements for your VeriPure® System:

1. Change the filter cartridge assembly when indicated by the LED readout on your VeriPure® System.
2. Replace the Dielectric tube whenever you change your filters (included in your maintenance kit).
3. Refer to Maintenance Kit supplied by VeriPure, LLC on page 14.

CAUTION: REMOVE DIELECTRIC TUBE CAREFULLY AS STRAIGHT AS POSSIBLE TO PREVENT BREAKAGE.

Please Reference Part# **VERIVPC5000MAINTKIT**

- Replacement Maintenance Kits contain a two-stage filter cartridge assembly and one thermoplastic-capped borosilicate glass dielectric tube. Please follow replacement guidelines as referenced above.



Changing the Filters (VP5000) *UNDER THE COUNTER MODEL*

PREPARATION

NOTE: To remove waterlines at the unit, you must first remove red locking clips. Next press each collar inward toward the unit using spanner tool, pulling hose simultaneously.

CAUTION: If you do not depress collar(s) before pulling hose(s), you can damage unit fittings. See Warranty Specifications.

1. **UNPLUG** your VeriPure® System unit from electrical connection before changing filter cartridges.

***THIS STEP IS IMPORTANT, IN ORDER TO RESET YOUR VERIPURE UNIT.**

2. Turn off the water supply to your VeriPure® system by turning the handle of the ball valve (Angle Stop Tee) installed between the cold-water line and your VeriPure® System until it is perpendicular (90°) to the inlet (feed) line.
3. Relieve the pressure on the Veripure® System by opening the faucet until no water comes out. Then close the faucet.
4. Disconnect the 1/4" input line from the filter and 3/8" output line on your VeriPure® System using spanner tool provided in maintenance kit. (Refer to Diagram 1)

TO REMOVE THE FILTER CARTRIGES (VP5000)

1. Place a towel/absorbent cloth on counter or work surface.
2. Remove unit from wall mounting plate by loosening screws. If unit is wall mounted, lift up and pull out from mounting plate.
3. Place unit face down on towel.
4. Unscrew the locking bolt in the center of the cartridge assembly (Refer to Diagram 1)
5. Using spanner tool, depress collar inward toward unit and pull filter assembly up. See previous CAUTION Statement.
6. Remove filter assembly by tipping then sliding filters out.
7. Dispose of the used filter assembly.

Changing the Filters (VP5000) (CONTINUED)

UNDER THE COUNTER MODEL

TO INSTALL FILTER CARTRIGES

1. Slide assembly into unit housing matching the filter outlet to unit inlet and press firmly.
2. Be sure the filter assembly is seated on guide pins (Refer to Diagram 1).
3. Replace locking bolt and turn finger tight.

RETURNING THE UNIT TO USE

1. If wall mounted, line up mounting guide holes to guide bolts on mounting plate. Allow unit to seat into place, checking stability before releasing unit from your grip. Tighten screws on mounting plate.
2. Reconnect water lines by popping line into fitting until seats feel firm.
3. Replace red locking clip on larger line assembly.
4. Plug unit back in. **PRESS FILTER RESET BUTTON.**
5. Open ball valve to water supply. **Note:** Ball Valve is in open Position when valve is in-line with water supply line. **CHECK FOR WATER LEAKS AT CONNECTIONS, IF DETECTED PUSH TUBING TO SEAT FULLY.**

CHANGING THE DIELECTRIC TUBE *(VP5000&VPC5000)

CAUTION: The Dielectric Tube is glass and is fragile. Dielectric tubes are not designed for bending or to sustain impact.



Dielectric Tube

1. Make sure your VeriPure® unit remains unplugged.
2. Locate the Dielectric. (Refer to Diagram 1) page 5.
3. Rotate the Dielectric cap one quarter (1/4) turn **counterclockwise**, to unlock the Dielectric. You will feel a click.
4. **Slowly** remove the Dielectric tube from the VeriPure® housing by sliding the Dielectric out, IN A STRAIGHT LINE, until the Dielectric tube is completely separated from the VeriPure® housing.
5. The old Dielectric tube should be immediately discarded of into the trash/garbage. **DO NOT TOUCH THE GLASS BECAUSE STAINING FROM NITROGEN BY-PRODUCTS CAN STAIN THE SKIN.**
6. Carefully slide new Dielectric tube in place until the cap is flush with the VeriPure® Housing.
7. Rotate the Dielectric cap one quarter (1/4) turn clockwise until it locks in place.



**PROPER DIELECTRIC POSTION WHEN
INSERTING OR REMOVING.**

FLUSHING INSTRUCTIONS

1. Turn on the water supply and **FLUSH NEW FILTER CARTRIGES FOR 3 MINUTES**, running water through the system.
2. New filter assemblies may contain "Carbon Fines" and the water may briefly appear gray ,but will quickly disappear once flushed.
3. **IMPORTANT - CHECK THAT ALL WATER LINES ARE SECURE AND FIRMLY SEATED WITH NO EVIDENCE OF WATER LEAKAGE.** If a water leak is detected, REPEAT 'Returning Unit to use', Steps 2-4.

TROUBLE SHOOTING GUIDE

At Badger-Veripure, LLC we expect your VeriPure® System to function properly for years as long as you perform the maintenance according to the prescribed schedule. However, the following table will help to identify any problem which may occur.

****NOTE:** The service technicians at VeriPure® are trained to address any undefined issues. Please call (920)613-6771 should you not be able to diagnose any problem.

TROUBLE SHOOTING CHART LOCATED ON PAGE 18

TROUBLE SHOOTING CHART

<u>PROBLEM</u>	<u>POSSIBLE CAUSE</u>	<u>SOLUTION</u>
NO OZONE	NO POWER TO SYSTEM PLUG	CHECK POWER SUPPLY CORD IS SEATED INTO VERIPURE SYSTEM AND WALL OUTLET.
		RESET ANY GFI OUTLET RESET BUTTONS IN THE AREA.
		CHECK IN-HOME ELECTRICAL BREAKER.
	FILTER LIFE IS EXPIRED AND FILTER IS LIMITING WATER PRESSURE TO FLOW SWITCH.	CHANGE YOUR SYSTEM FILTERS
	WET GLASS DIELECTRIC	*CAREFULLY* REMOVE THE GLASS DIELECTRIC AND INSPECT FOR MOISTURE. IF WET, CONTACT VERIPURE 2425 Hutson Road Green Bay, WI 54303 920.613.6771
	DROP IN HOUSE OR MUNICIPAL WATER PRESSURE.	LOW WATER PRESSURE WILL NOT ALLOW YOUR SYSTEM OZONATION COMPONENTS TO TURN ON. REGAIN INCOMING WATER PRESSURE TO MINIMUM OF 50 PSI. CONTACT YOUR PLUMBER OR MUNICIPALITY.
DROP IN OR NO WATER FLOW	PLUGGED FILTER	CHANGE YOUR SYSTEM FILTERS.
	DROP IN HOUSE OR MUNICIPAL WATER PRESSURE.	CONTACT YOUR PLUMBER OR MUNICIPALITY.
SYSTEM LIGHTS NOT ON	NO POWER TO SYSTEM PLUG.	CHECK POWER SUPPLY CORD IS SEATED INTO VERIPURE SYSTEM AND WALL OUTLET.
		RESET ANY GFI OUTLET RESET BUTTONS IN THE AREA.
		CHECK IN-HOME ELECTRICAL BREAKER.
PANEL INDICATION LIGHTS HAVE NOT RETURNED TO STANDBY	MAY HAVE NOT UNPLUGGED POWER WHEN CHANGING FILTER/GLASS DIELECTRIC TUBE.	UNPLUG YOUR SYSTEM, WAIT 10 SECONDS PLUG BACK IN AND PRESS THE RESET BUTTON ON YOUR FRONT PANEL.

COMMON QUESTIONS ABOUT OZONE

HOW DOES THE VERIPURE® SYSTEM TREAT WATER FOR DRINKING?

VeriPure® provides a three-layered system. The first two levels of filtration are followed by injecting powerful ozone gas as a final stage disinfectant which ensures flavorful and safe water.

1. As water passes through the first sediment filter dirt, rust and other particulates from the water are removed.
2. Water is then filtered a second time when it passes through a carbon block filter which reduces cysts, chlorine, organics and other impurities.
3. In the final stage, ozone is injected into water via the dielectric tube.

HOW MUCH OZONE IS INJECTED INTO THE WATER?

The VeriPure® patented process creates Low Level Ozone Technology®. The ozone level in the water at one half (1/2) gallon per minute is approximately 0.4– 0.7 parts per million.

IS THE OZONE SAFE TO DRINK?

Yes. Due to our patented Low Level Ozone Technology®, the ozone turns back into oxygen very quickly. To give an idea of how much ozone is in the water, 0.4 parts per million is the equivalent to one inch in 64 miles. The ozone in the water is within the guidelines for ozone established by the FDA Bottled Water Regulations. Ozone was first discovered in 1840 and has been used to treat municipal drinking water since 1905.

DOES THE OZONE AFFECT THE TASTE OF THE WATER?

Initially, there is a slight aroma of ozone. This dissipates after a short period of time, approximately 20 seconds.

IS THE OZONE GAS RELEASED INTO THE AIR BY VERIPURE® TREATED WATER HARMFUL?

No. Your VeriPure® System employs Low Level Ozone Technology® which is harmless. Ozone is classified as an irritating gas only in high concentrations. The EPA has established strict guidelines limiting 0.1 parts per million in the air for eight hours of continuous exposure. Only a small portion of the ozone in the treated water is released momentarily into the air. If all the ozone in one gallon of water were released into one cubic foot of air, the level would amount to 0.03 parts per million and it would revert to oxygen within a few minutes.

WHAT IF MY WATER DOESN'T TASTE GOOD?

If your water suddenly has a bad taste, the problem could be the filter cartridge(s) are spent. Changing the filter may take care of taste. Refer to "Filter change" Instructions in this manual or contact your dealer or distributor.

IF I WANT TO REDUCE THE 'POPPING' WHEN I INITIALLY TURN ON MY VERIPURE® FAUCET, WHAT CAN I DO?

After you have the faucet running, gradually decrease the flow to totally shut the faucet off(watching for the water stream to become clear and void of bubbles). What this will do, is decrease the ozone in the water stream to virtually nothing. So the next time you turn on the faucet, there will be no pressure in the line from previous use.

LIMITED WARRANTY

Badger-VeriPure, LLC warrants to the original purchaser of the VeriPure® System products that such equipment is free from defects in materials and workmanship.

If within one (1) year from the date of purchase, any product purchased from Badger-VeriPure, LLC shall prove to be defective in materials or workmanship, the Badger-VeriPure, LLC product shall be repaired or replaced, at Badger-VeriPure's sole discretion and expense.

This warranty shall not apply to:

- a. Product that has been damaged by improper installation.
- b. Product that has been improperly used or maintained.
- c. Product subjected to temperatures below 35 or over 120⁰ F.
- d. Product operated in water pressures exceeding 90 psi.
- e. Product damaged after delivery.
- f. Product that has not been properly maintained.

VeriPure® Maintenance Kits are specifically not covered under this warranty.

Requests for service under this warranty shall be made by contacting our customer service team at info@veripure.com in a timely manner following discovery of the claimed defect. Any claim under this warranty must be made within 30 days following the expiration of the one year warranty.

Badger-VeriPure, LLC reserves the right to improve designs or change specifications at any time without any contingent obligation to owners of products previously sold.

Badger-VeriPure, LLC shall not be liable for any consequential, incidental or contingent damages. The foregoing warranties are exclusive and in lieu of all other express warranties. Implied warranties, including but not limited to the implied warranties of merchantability and fitness for a particular purpose, shall not exceed beyond the duration of this applicable express warranty provided herein. It is acknowledged that select states do not permit exclusive or limitations of incidental or consequential damages or limitations on the duration of an implied warranty, so the above limitations or exclusions may not apply to you. This warranty extends to your specific legal rights and you may also have other rights which vary from state to state.



2425 HUTSON ROAD
GREEN BAY WI, 54304
(920) 613-6771