

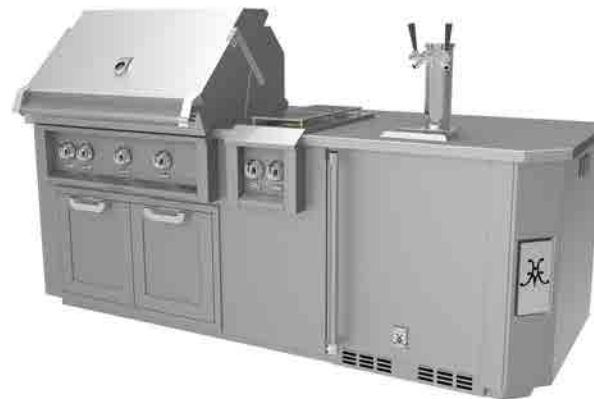


ALL SUITE FEATURES

- Available in 8 foot and 12 foot widths
- Ground fault circuit interrupter outlets with 120 volt AC power & weatherproof covers
- Single point electrical connection to pre-wired junction box
- Single point gas connection
- Heavy gauge welded body construction
- Stainless steel front, sides, bottom, and back
- Stainless steel curb base
- Monogrammed corner panels

8 Foot Suite

An Outdoor Living Suite consists of multiple cutouts (appliances sold separately) to accommodate a:

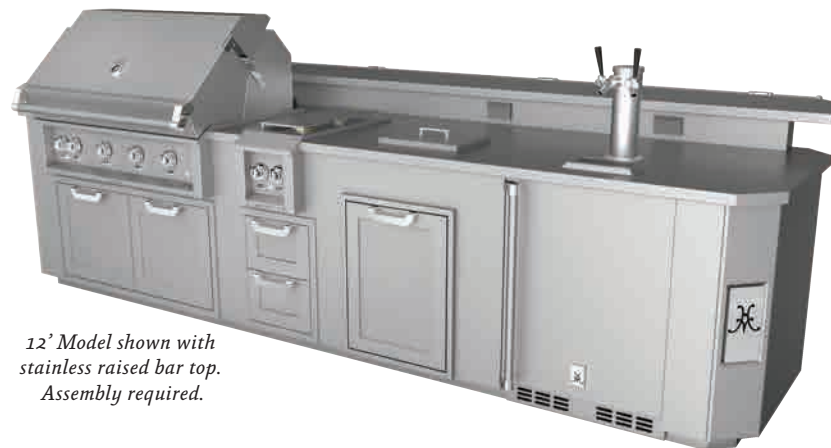


- 36" Hestan grill
- 36" Hestan Access Door, Drawer/Door Cabinet or Sealed Pantry
- 12" Hestan Double Side Burner
- 24" Hestan Refrigeration Product

8' Model shown with stainless top / beer dispenser hole. Assembly required.

12 Foot Suites (Footrail Standard)

An Outdoor Living Suite consists of multiple cutouts (appliances sold separately) in a 12 foot suite to accommodate a:



12' Model shown with stainless raised bar top. Assembly required.

ALL OPTIONS & ACCESSORIES

- Stainless steel sub-structure for stone countertop (stone countertop not included) - S, SB models
- Fully welded 1-piece stainless countertop - SD, SS models
- Beverage Dispenser Hole - SD, SDB models
- Fully welded 1-piece stainless raised bar with Marquise Accented™ bellybar, stainless backsplash with electrical outlets and waterproof outlet covers (one in 8 foot and two in 12 foot suite) - SSB, SDB models
- Outdoor Living Suite covers

Countertop Option



Weatherproof Outlet GFI



Marquise Accented™ bellybar option



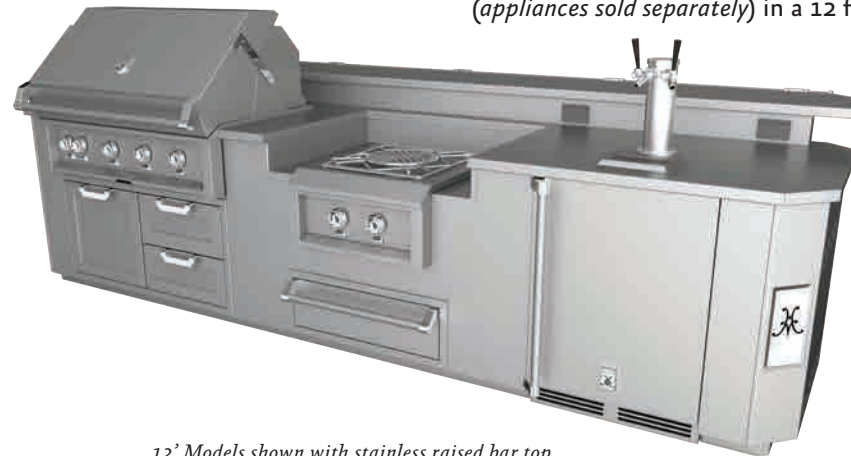


All Suite Features

- Available in 8 foot and 12 foot widths
- Ground fault circuit interrupter outlets with 120 volt AC power & weatherproof covers
- Single point electrical connection to pre-wired junction box
- Single point gas connection
- Heavy gauge welded body construction
- Stainless steel front, sides, bottom and back
- Stainless steel curb base
- Monogrammed corner panels

12 Foot Power Burner Suite

An Outdoor Living Suite consists of multiple cutouts (appliances sold separately) in a 12 foot suite to accommodate a:

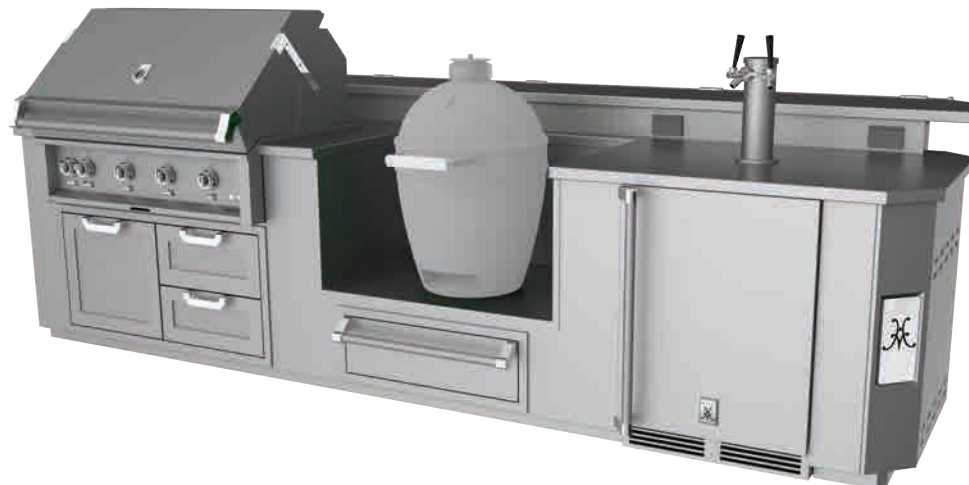


- 42" Hestan grill
- 42" Hestan Access Door or Drawer/Door Cabinet
- 24" Power Burner
- 30" Storage Drawer
- 24" Refrigeration Product

12' Models shown with stainless raised bar top. Assembly required.

12 Foot Smoker Suite (Footrail Standard)

An Outdoor Living Suite consists of multiple cutouts (appliances sold separately) in a 12 foot suite to accommodate a:



- 42" Hestan grill
- 42" Hestan Access Door or Drawer/Door Cabinet
- 36" Egg Shaped Smoker/ Grill Platform
- 30" Storage Drawer
- 24" Refrigeration Product

ALL OPTIONS & ACCESSORIES

- Stainless steel sub-structure for stone countertop (stone countertop not included) - S, SB models
- Fully welded 1-piece stainless countertop - SD, SS models
- Beverage Dispenser Hole - SD, SDB models
- Fully welded 1-piece stainless raised bar with Marquise Accented™ bellybar, stainless backsplash with electrical outlets and waterproof outlet covers (one in 8 foot and two in 12 foot suite) - SSB, SDB models
- Outdoor Living Suite covers

Countertop Option

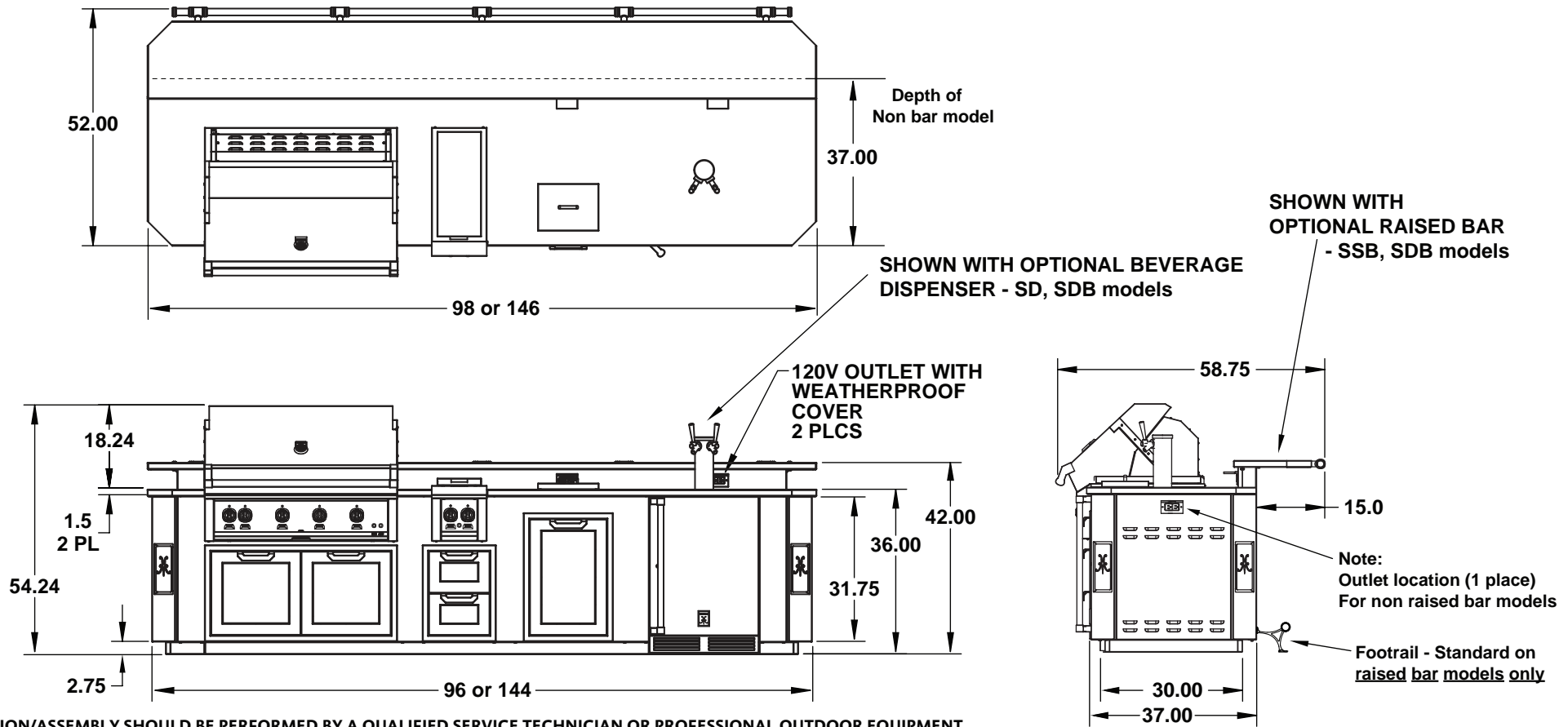


Weatherproof Outlet GFI



Marquise Accented™ bellybar option





INSTALLATION/ASSEMBLY SHOULD BE PERFORMED BY A QUALIFIED SERVICE TECHNICIAN OR PROFESSIONAL OUTDOOR EQUIPMENT INSTALLER. THE ELECTRICAL COMPONENTS SUPPLIED WITH SUITES MUST BE INSTALLED BY A LICENSED ELECTRICIAN AND CONNECTED IN ACCORDANCE WITH LOCAL CODES. GAS CONNECTIONS MUST BE MADE BY A LICENSED PLUMBER IN ACCORDANCE WITH LOCAL CODES.

Built - In Models	Description	Weight (lbs)	Note : Weights are approximate depending with or without tops or elevated bar top. The unit ships in pieces and assembly is required. Appliances not included.
GE__8	8' Cooking Suite	650	
GE__12	12' Cooking Suite	940	
GE__P12	12' Cooking Suite with Power Burner	940	
GE__K12	12' Cooking Suite with Egg Shaped Smoker/Grill	940	

S: no top SD: ss top w/ beer dispenser SS: ss top SSB: ss top w/bar SDB: ss top w/bar and beer dispenser SB: no top w/ bar

GAS REQUIREMENTS : 1/2" NPT gas connection. Minimum gas supply is 7" water column for natural gas and 11" for propane. Operating pressure at the manifold is 4" water column for natural gas and 10" for propane.

All units require a regulated gas supply. (included with appliances)

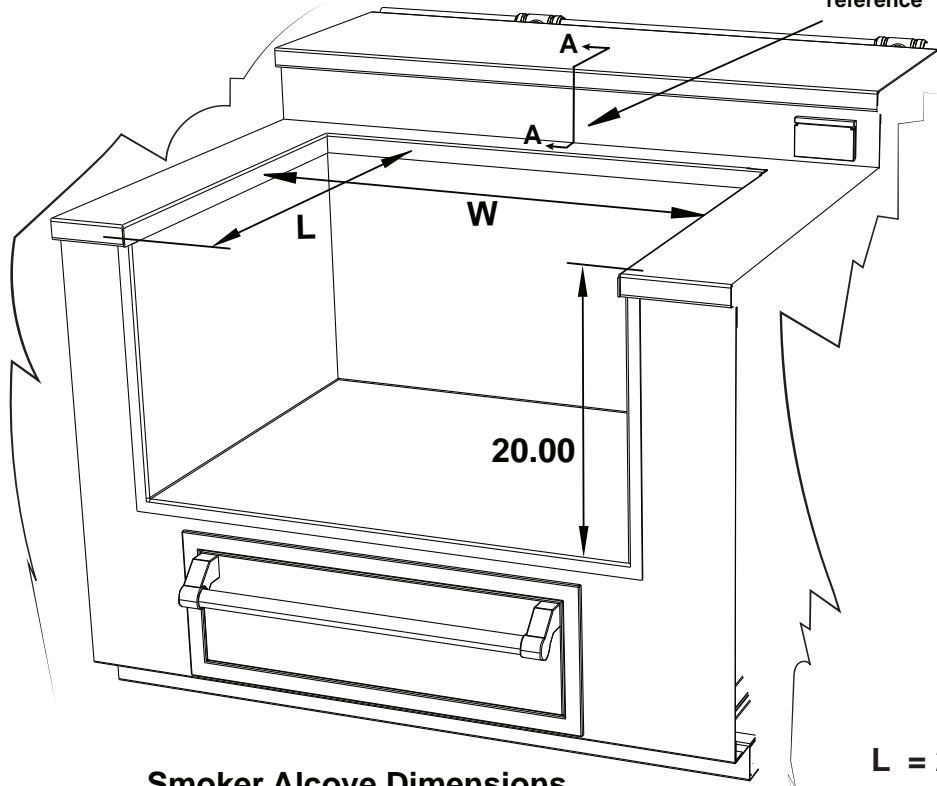
ELECTRICAL REQUIREMENTS :

120V, 60Hz, 20 amp circuit breaker from main service panel

Hestan Outdoor products are approved for outdoor use only. Hestan Commercial Corporation reserves the right to change materials and specifications without notice. Specify type of gas when ordering.

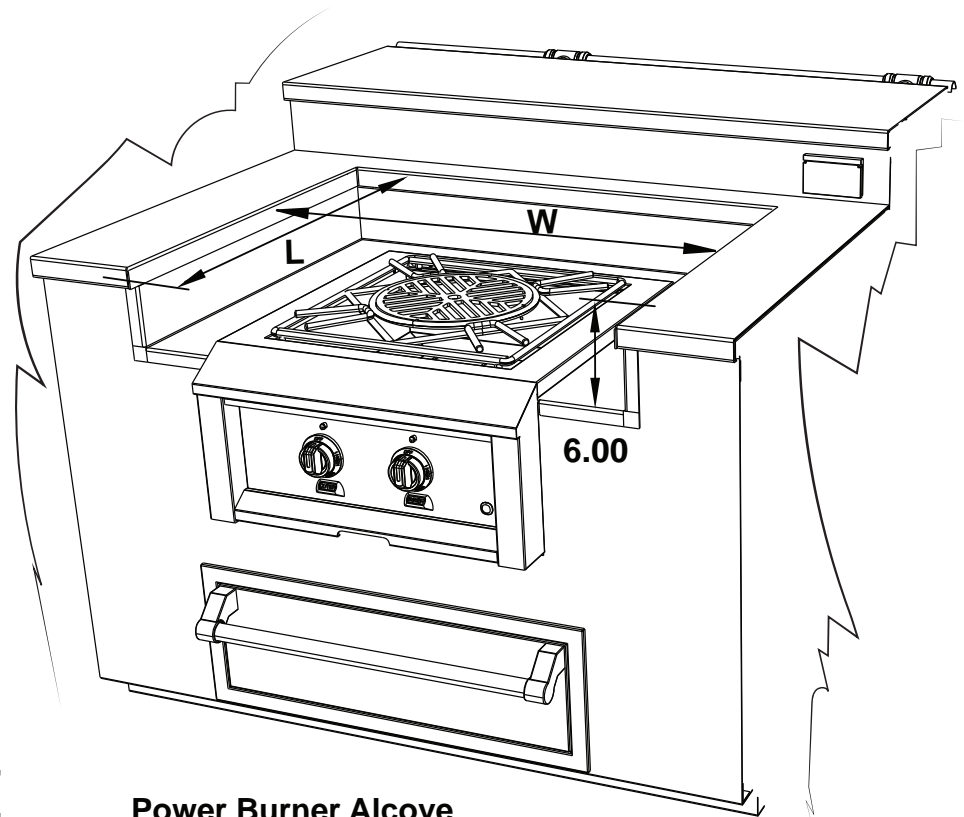


See Drawing AA for hinge clearance reference

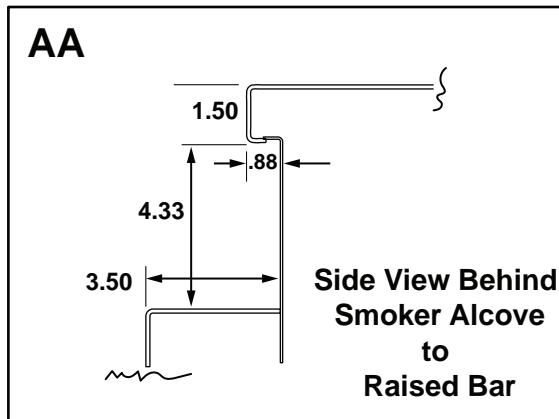


Smoker Alcove Dimensions

L = 29.50"
W = 35.75"



Power Burner Alcove



All Dimensions are in Inches