

NAIL ENHANCEMENT FILE FINISHING

The goal of enhancement finishing is to refine a nail enhancement for excellent symmetry, wear and protection of the natural nail. Proper finishing techniques prevent nail plate damage, by providing proper balance of the enhancement, alleviate the potential for service breakdown, and shorten the service time for rebalancing.

CND™ PRODUCTS REQUIRED

- CND™ Files and Buffers
- SOLAROIL™ Nail & Cuticle Care
- SCRUBFRESH™ Nail Surface Cleanser

ACCESSORIES/EQUIPMENT REQUIRED

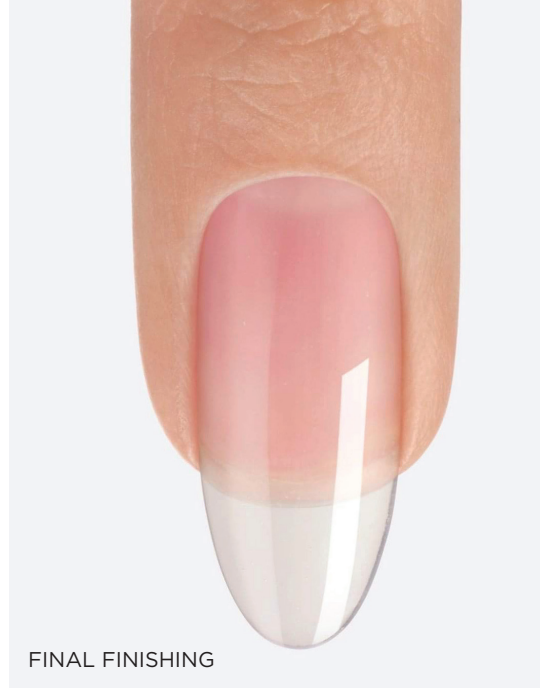
- Disinfectable dust brush
- 99% Isopropyl Alcohol
- CND™ LED Lamp
- Plastic-backed, lint-free pads

Step 1 **SHAPE THE LEFT (REVERSE) SIDE OF THE ENHANCEMENT.**

1. Rotate the finger to the right.
2. File from sidewall to center in an upward one-directional stroke, using a 180-grit file along the entire length of the nail from extension edge to cuticle line to reduce any bulk or hips along the side of the nail.

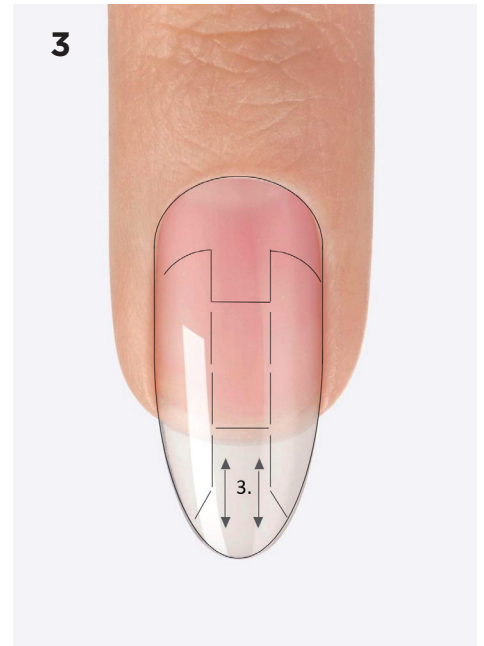
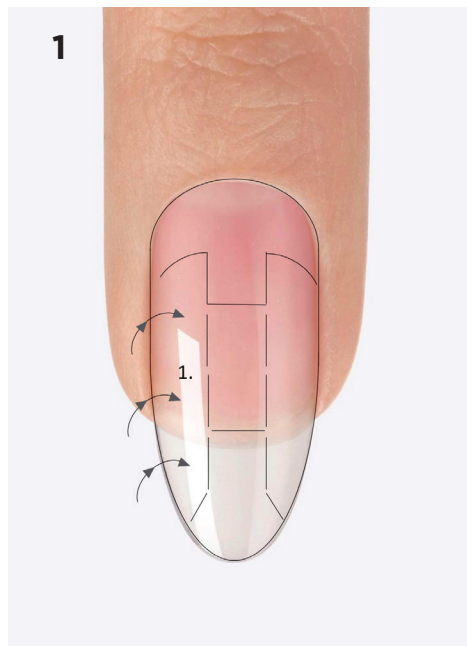
Step 2 **SHAPE THE RIGHT (FORWARD) SIDE OF THE ENHANCEMENT.**

1. Rotate the finger to the left.
2. File from sidewall to center in an upward one-directional stroke, using a 180-grit file along the entire length of the nail from extension edge to cuticle to reduce any bulk or hips along the side of the nail.



Step 3 **ESTABLISH THE BARREL C-CURVE.**

1. Bevel and taper the extension edge of the enhancement by holding the file parallel to the nail using a one-direction stroke towards yourself, blending zone 2 into zone 1, using a 180-grit file.
2. Create a thin, even extension edge.



NAIL ENHANCEMENT FILE FINISHING

(continued)

Step 4 **REFINE THE CUTICLE LINE.**

1. Blend and smooth the cuticle area in zone 3, using a 180/240-grit file from sidewall to sidewall using a one-directional stroke with a light touch.
2. Use caution not to file into the natural nail or surrounding skin.
3. The line should be even, smooth and tapered from sidewall to sidewall.

Step 5 **REFINE THE APEX PLACEMENT.**

1. Assess the apex from each sideview to determine the proper placement, in center of zone 2.
2. Refine and establish the final apex placement using a 180-grit file.
3. Buff with a 180-grit buffer using a multi-directional stroke to blend all three zones.

Step 6 **REFINE FRONT FORM SHAPE AND LOWER ARCHES.**

1. Refine sidewalls and front form shape with a 180/240-grit file or buffer using a combination of multi-directional and one-directional strokes.
2. Refine the lower arch using a 240-grit file with a light touch. The line should extend straight from the finger.

