

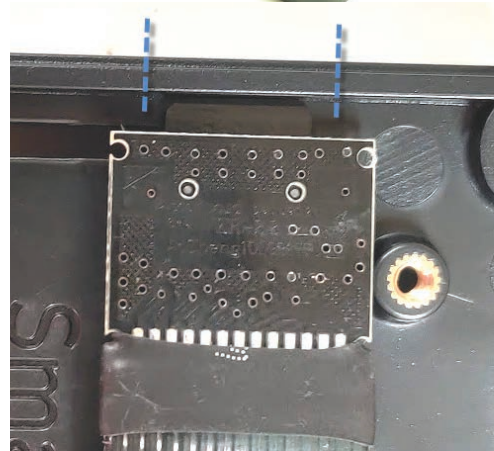
Smarti Pi Touch Pro

Micro SD card access kit installation

1 Route the long display cable you received in this kit through the farther notch like the image below.



2 Insert the micro SD card into the holder and place the holder onto the case to mark where to cut out the plastic. The edge of the PCB should be against the brass screw insert as shown in the image to the right.



3 Cut out the raised plastic at the edge all the way down to the main plastic surface as shown in the red box to the right.



4 Peel the paper off the tape and press down onto the case to mount the holder next to the notch you just created. Keep the PCB inside the edge of the raised plastic as shown by the orange line.

