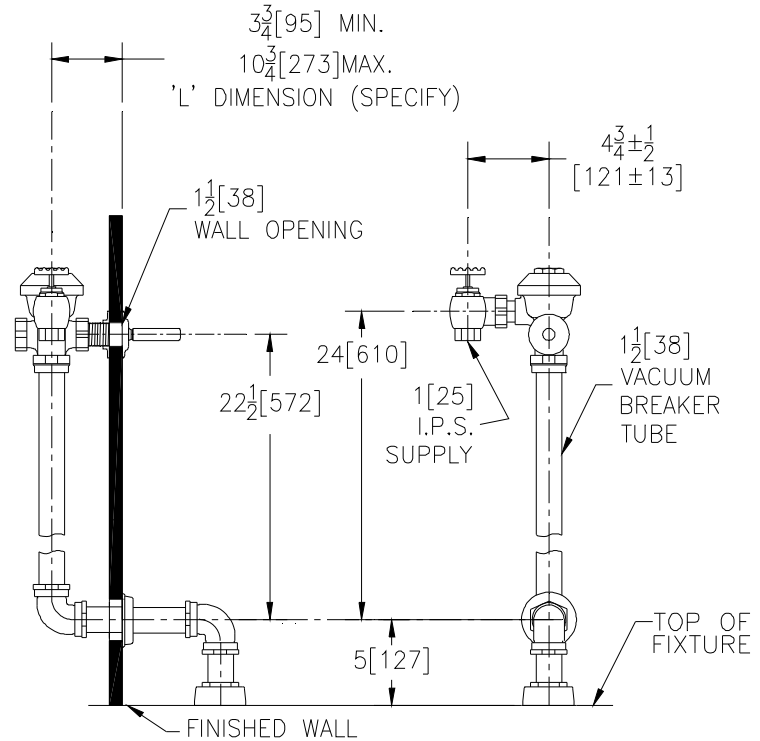


Z6155

with Exposed Top Spud Connection for Service Sinks



Flow Options

- HET 1.28 gpf High Efficiency Flush
- WS1 1.6 gpf Low Consumption
- WS 3.5 gpf
- FF 4.5 gpf Full Flush

Accessories

- BG BioCare ADA Handle
- L 1"[25] Metal Push Button
- L3 3"[76] Metal Push Button
- YB Sweat Solder Adaptor
- _____ Other

Architectural/Engineering Approval

The information contained in this document is subject to change without notice.
Please contact Zurn for most up to date information.

ZURN INDUSTRIES, LLC. ♦ COMMERCIAL BRASS OPERATION
5900 ELWIN BUCHANAN DRIVE ♦ SANFORD NC 27330
PHONE: 1-800-997-3876 ♦ FAX: 919-775-3541
WWW.ZURN.COM
IN CANADA: ZURN INDUSTRIES LIMITED
3544 NASHUA DRIVE ♦ MISSISSAUGA, ONTARIO L4V1L2
PHONE: 905-405-8272 FAX: 905-405-1292

ENGINEERING SPECIFICATIONS

Concealed, quiet diaphragm-type, rough brass flushometer valve.

- Zurn's AquaFlush® TPE diaphragm
 - Linear filtered by-pass
 - Chloramine resistant
 - Dual seal
- Actuator
 - ADA compliant handle
 - Non-hold open and no leak feature
- Control Stop
 - Internal siphon-guard protection
- Vacuum Breaker
 - High back pressure
 - One piece hex coupling nut
- Internal seals
 - Chloramine resistant
- Adjustable tailpiece
- Spud coupling and flange for top spud connection