



# LH1001 RealScooper Manual



LH1001PA160DF



Smarter Pet Care,  
Happier Home Moments

www.  
lalahome.com

LALA HOME

Smarter Pet Care,  
Happier Home Moments



# CONTENTS

	<b>Declaration</b>	
<b>I.</b>	<b>User Notice</b>	<b>P.2</b>
<b>II.</b>	<b>In the box</b>	<b>P.3</b>
<b>III.</b>	<b>Installation Instructions</b>	<b>P.4-9</b>
<b>IV.</b>	<b>Instruction for use</b>	<b>P.10-14</b>
<b>V.</b>	<b>Cleaning Instructions</b>	<b>P.15-16</b>
<b>VI.</b>	<b>Common Problems and Solutions</b>	<b>P.17-18</b>
<b>VII.</b>	<b>Quick Trouble Shooting</b>	<b>P.19-20</b>
<b>VIII.</b>	<b>FCC Rules</b>	<b>P.20-21</b>
<b>IX.</b>	<b>Description Of Hazardous Substances</b>	<b>P.22</b>
<b>X.</b>	<b>Product Parameters</b>	<b>P.22</b>

# DECLARATION:

Thank you for purchasing the **LALAHOME REALSCOOPER Smart Cat Litter House**. LALAHOME SMARTTECH is dedicated to enhancing the pet-owning experience through the power of design, and this manual is designed to assist you in better understanding and utilizing our product.

## Download the LALAHOME SMARTTECH APP

1. Scan the QR code to download the APP suitable for Android or iOS users.
2. iOS users can also download the LALAHOME SMARTTECH APP from the Apple App Store, while android users can find it on Google Play.
3. Alternatively, you can download the APP from our official website at [www.lalahome.com](http://www.lalahome.com).



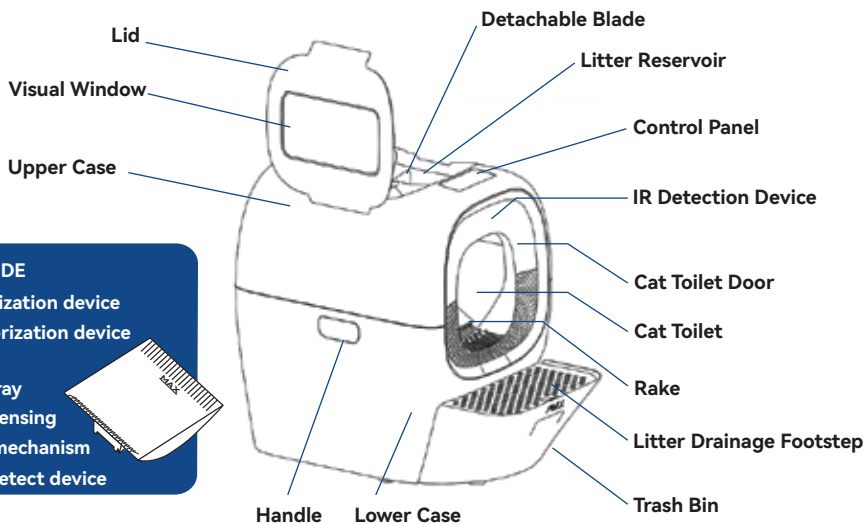
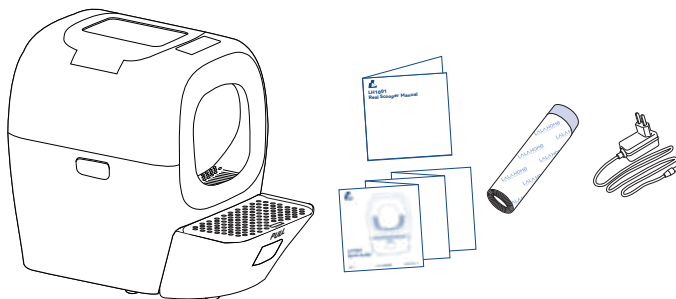
**SUGGEST TO PURCHASE THE BEST 3-IN-1 PREMIUM BENTONITE CAT LITTER FOR REALSCOOPER FROM [www.lalahome.com](http://www.lalahome.com).**

## I. USER NOTICE

1. Strictly follow the instructions in the manual for the installation and use of this device.
2. Place the device on a flat surface.
3. The glass on the top of the device is fragile; do not place items on it to avoid safety hazards.
4. Do not use the device in high-temperature or high-humidity environments.
5. This device is only suitable for clumping cat litter, such as mineral cat litter; do not use non-clumping cat litter.
6. Do not add items other than clumping cat litter inside the toilet tray.
7. Do not force cats into the device.
8. This device is not suitable for cats under 6 months old or weighing less than 1kg (2.2lbs).
9. The entire device is not waterproof ; avoid immersing or exposing it to water. The toilet tray and trash bin can be cleaned by water. For the device main body, please use only a damp cloth to wipe for cleaning.

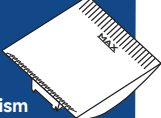
## II. IN THE BOX

1. Main device 1 pc
2. Adapter x1 pc
3. Manual x1 pc
4. Quick Guide x1 pc
5. Waste Bags x1 Roll



### INSIDE

1. Sterilization device
2. Deodorization device
3. Light
4. Toilet Tray
5. Living Sensing
6. Weight mechanism
7. Motion detect device



PLEASE READ ALL THE INSTRUCTIONS BEFORE INSTALLING AND USING YOUR REALSCOOPER

# III. INSTALLATION INSTRUCTIONS

Instruction videos



Scan the QR code to watch the Instruction videos.

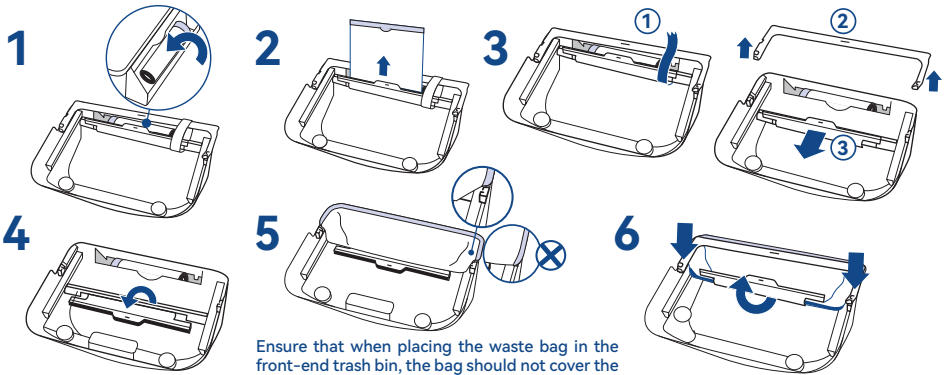
Step 1: Remove the device and its accessories from its packaging box.

Step 2: Take out the adapter, litter drainage footstep, and 1 roll of waste bag from the accessory box .

## INSTALLING THE WASTE BAG:

Step 3: Take one piece of bag from bag roll and place the balance into the roll holder at the front of the trash bin.

Step 4: Release the u-shaped strip and movable bar by unwrap the film wrapped on the edge of trash bin. Spread out the bag edge alongside the rim of the bin. Clip the front side with u-shaped strip and clip the other side by the foldable clip of the movable bar.



Ensure that when placing the waste bag in the front-end trash bin, the bag should not cover the clasps of the u-shaped strips on both sides.



THE OPERATION PROCESS SHOULD BE HANDLED LIGHTLY TO AVOID PRODUCT BRUISES AND SCRATCHES.



PLACE THE DEVICE INDOORS, NEAR THE POWER SOURCE IN A DRY PLACE, AND PREPARE FOR USE.

BEFORE PRESSING THE CONTROL PANEL BUTTONS, PLEASE LONG-PRESS THE MIDDLE BUTTON TO UNLOCK THE CHILD LOCK. WHEN THE CHILD LOCK IS ACTIVE, THE BUTTONS CANNOT BE OPERATED.



## INITIAL LITTER ADDITION

Step 1: Remove the trash bin, pinch the clip in the middle of toilet tray to pull it out.

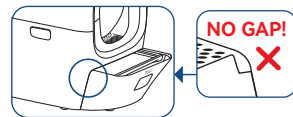
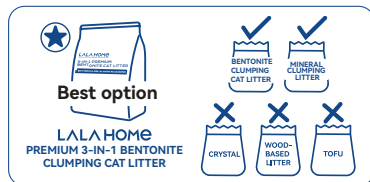
Step 2: Add sufficient new litter into the tray to MAX line.

Step 3: Push the tray back into the main device. Make sure you hear the click sound to confirm that the tray has been correctly put into place.

Step 4: Put the trash bin back and place the drainage footstep on the top. Make sure do not leave gap in both side between the bin and main device.

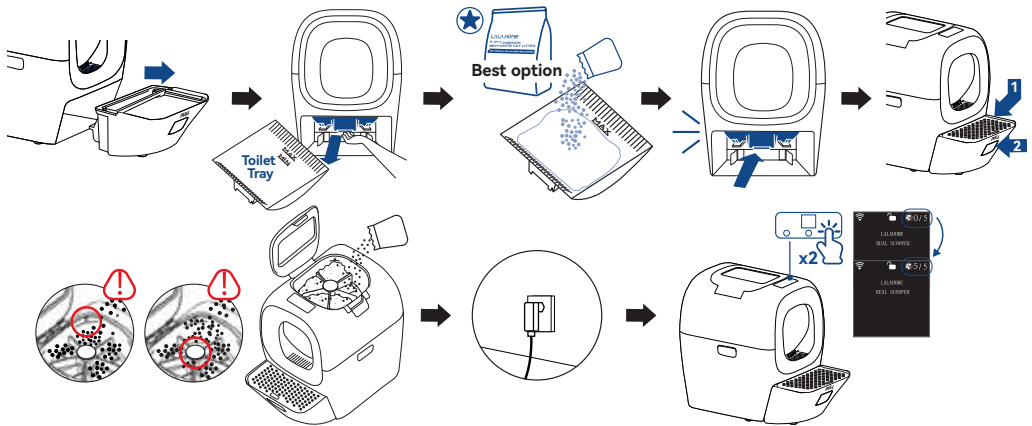
Step 5: Add new litter into the top reservoir till MAX line.  
Close the lid and clip it to main body firmly.

Step 6: Plug the main device into power socket, wait until it completes self-test. Double-click the right button to preset correct balance count in the top reservoir so that APP can remind you once the litter stock runs out.



**Congratulations**, your RealScooper is now ready to use. Once your cats leave the RealScooper, it will automatically scoop twice then sterilize the litter bed and deodorize the trash bin. Meanwhile you will receive a notification from **LALAHOME SMARTECH APP**. Once all 5 cells litter in top reservoir used up, the APP will remind you to add new litter in time. And, when the trash bin is full, you will also get a notification from the APP.

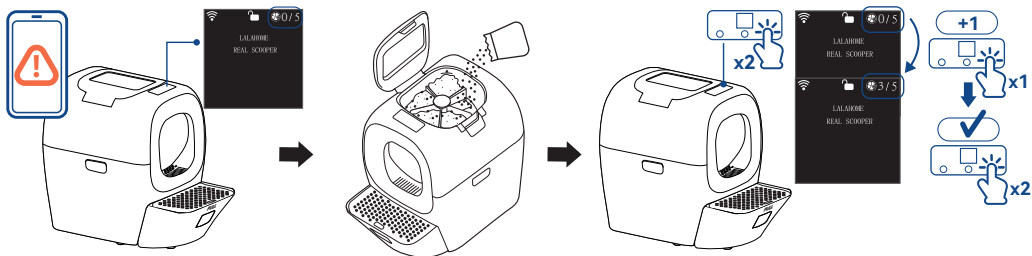
## 1<sup>ST</sup> TIME TO FILL LITTER TO YOUR REALSCOOPER



## REFILL LITTER AFTERWARDS

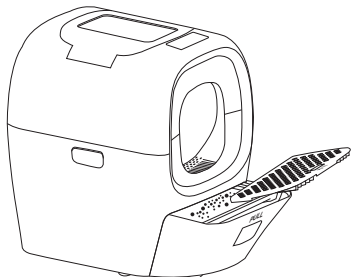
When the device detects that the volume of litter bed is running low, it will dispense 1 cell of new litter to the litter bed. The balance count will be reduced accordingly. When all 5 cells litter in the top reservoir are used up, you will receive a reminder to add litter in time.

( If the amount of litter is not enough to fill all 5 sells of the top reservoir, double-click the right button to set correct counts. Single click during its blinking to adjust the numbers then double click again to confirm your setting.)

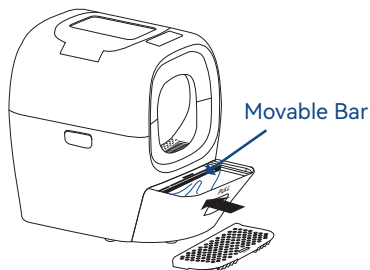


## REPLACE THE WASTE BAG

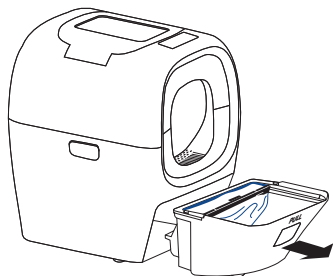
**Step 1:** Tilt and tap the Extra litter drainage footstep to pour the excess litter carried by the cat's paw into the trash bin.



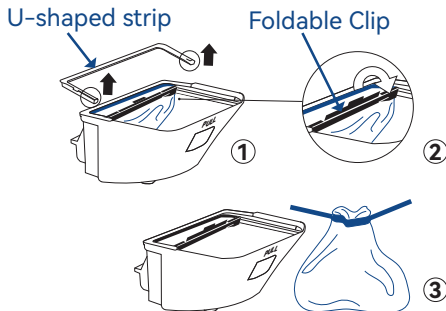
**Step 2:** Remove the litter drainage footstep and slide the movable bar forward to seal the waste bag.



**Step 3:** Pull out the trash bin.



**Step 4:** Remove the u-shaped strip and unclip the foldable clip to take out the waste bag. Pull the drawing strip of the bag to tighten the waste bag before dispose.

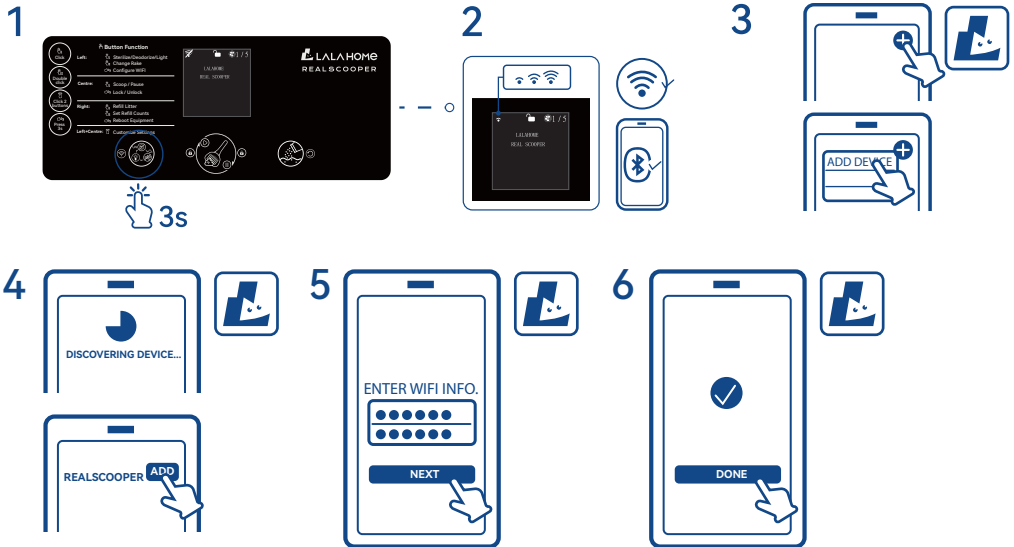




## APP download and Wi-Fi configuring

iOS users can download the LALAHOME SMARTECH APP from the Apple App Store, while Android users can find it on Google Play.

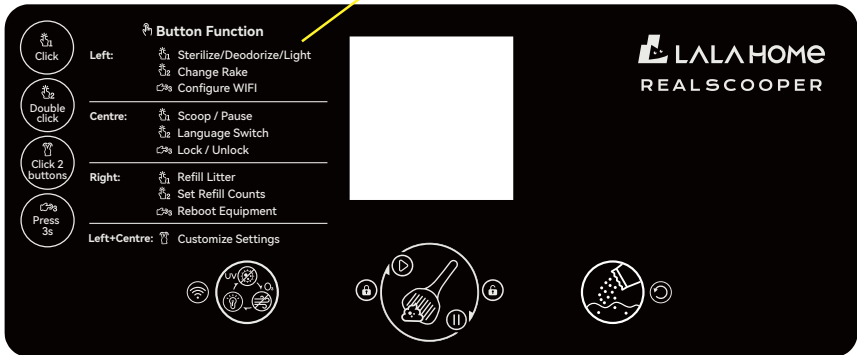
- i. The device supports both 2.4G WI-FI and 5G WI-FI without switching networks.
- ii. Make sure your phone has connected with Wi-Fi and **TURN ON BLUETOOTH** before connect to RealScoop.



\* Use “Share device” function in the APP to authorize another user to access your device.






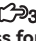

# Understanding the Control Panel:

All buttons function are printed on the left side.



All operations need to be performed with the child lock in the unlocked state.

Button Functions:

	 Left Button	 Centre Button	 Right Button
 Click	Sterilize/Deodorize/ Light	Scooping/Stop Scooping	Refill Litter
 Double Click	Replace Rake	—	Set up Refill Litter
 Press for 3s	Connect to WI-FI network	Child Lock /Unlock	Reboot Equipment
 Click 2 buttons simultaneously	Personalized Settings Mode		—



Details of Remote Operation through the APP can be found in the APP functionality description on the APP page.

## IV. INSTRUCTION FOR USE



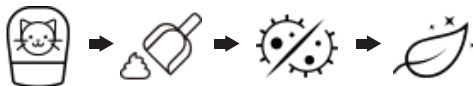
This device is a fully automatic smart litter house. Once you completed the first set up of litter refill. You do not need to attend its use.

However, in order to enhance user engagement experience, the device still provides manual operation and remote control through the APP .

### 1. Automatic Cleaning Function



Once cat finishes business and leaves the device will start to clumping delay, scoop 2 cycles, then sterilize the litter bed and deodorize the trash bin for a period of



### 2. Self Refill Function



There are 5 cells in the top reservoir, and each cell can hold approximately (2.64lbs) 1.2kg of clumping litter when fully loaded.

**Self Refill:** When the toilet tray detects the litter bed turns to be low, it will automatically drop one cell of litter to replenish the litter bed.



### 3. Automatic Safety Features

#### **Safety Protection:**

- i: During the scooping operation, if cat is moving nearby the main device, the rake will retract to its original position.
  
- ii: During the scooping of waste, if cat approaches the main device, the rake stops. It resumes 30 seconds after cat leaves.
  
- iii: During the scooping operation, if cat enters the litter box to poo, the scooping will be cancelled. It will start another cycle of scooping after the cat leaves.
  
- iv: The ultra-slow-speed motor is gentler than a hand and won't harm the cat.
  
- V: Motor dejam function ensures the motor returns backward if obstructed.



#### 4. Manual Cleaning Function

Single-click the centre button on the control panel to enter manual scooping. The device will perform a complete scooping process (scooping twice, sterilizing the cat litter in the toilet tray, and deodorizing the trash bin).



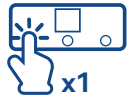
#### 5. Manual Refill Function

Single-click the right button on the control panel and the device will drop one cell of litter to the toilet tray. It will automatically flat the cat litter in the toilet tray after refilling to ensure litter bed being flatten.



#### 6. Manual Sterilization / Manual Deodorization / Light Activation

Single-click the left button on the control panel, and the device will perform sterilization of the cat litter in the toilet tray. Click the button again, and the device will enter trash bin deodorization. Click the button once more, and the device will turn on the light.



#### 7. App Operation (Refer to the instructions in APP).



## 8. Notification Alerts

### 1. Trash Bin is full:

When the trash bin is full, the device will send a message through APP "Trash bin is full, please clean it in time."

(The device's control panel will display a warning icon and error code 4.)

### 2. Run out of litter stock:

When all 5 cells of the litter reservoir have been used up, the device will send a message through APP .

### 3. Cat Entry Notification:

When the cat enters the litter house, the device will send a message through APP "xx:xx:xx I your cat visited REALSCOOPER."

### 4. Motor Block Notification:

When the motor are blocked the device will send a message through APP "xx:xx:xx I your motor is stuck. Please clear the obstacles,."

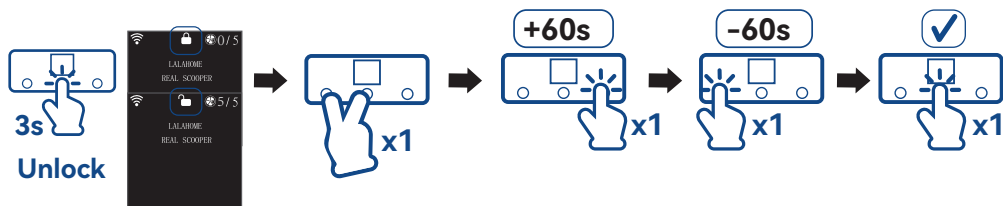
### 5. Other App Messages:

- a. The real-time weight of the cat will be displayed on the APP .
- b. The remaining capacity of the litter reservoir will be displayed on the APP .
- c. The number of times the cat visited the litter house of the current day will be displayed on the APP .
- d. The remaining capacity of the trash bin will be displayed on the APP .



## 9. Customized Clumping Delay Setting

1. With the child lock unlocked, simultaneously press the left button + centre button to adjust the cat litter clumping delay settings.
2. Click the left button to decrease the clumping duration, and click the right button to increase the clumping duration.
3. After setting, click the centre button to save the setting.
4. The clumping delay can be set to a maximum of 30 minutes and a minimum of 1 minute.



## Understanding the meaning of function icons :

The screen shows icon while the device is working on corresponding function.



## V. CLEANING INSTRUCTIONS

### 1. Cleaning Steps

Step 1: Disconnect the power.

Step 2: Take out the trash bin.

Step 3: Slide out the toilet tray and pour the cat litter into a waste bag.

Step 4: Clean the trash bin, toilet tray, and litter drainage footstep with water.

Step 5: Wipe all components to dry.

Step 6: Place the toilet tray back into the main device, ensuring the locking latch clipped in place.

Step 7: Place back the trash bin and drainage footstep.

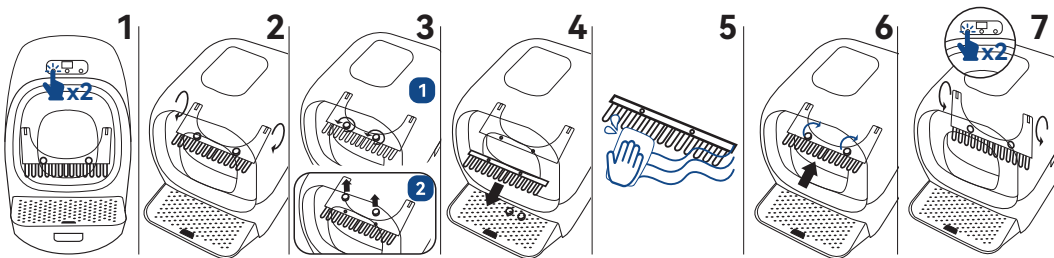






**!** Do not directly rinse the main body with water which can be impaired because electronic parts inside: please use only a damp cloth to wipe for cleaning.

### Rake Disassembly and Cleaning :



- Step 1: Double-click the left button, and the rake will be moved to the middle horizontal position to the toilet door.
- Step 2: Loosen the two fixing screws and take it out.
- Step 3: Remove the rake for cleaning and insert it back after being cleaned.
- Step 4: Tighten the two fixing screws to secure the rake.
- Step 5: Double-click the left button, and the rake will return to its initial position.

### 1. Can kittens use this product?

This device is suitable for cats aged 6 months and older, weighing more than 2.2lbs (1 kg). If the cat's weight or age does not meet the criteria, please do not use this device.

### 2. What if my cat is unwilling to use RealScooper?

If the cat is wary, you can place the RealScooper main device next to the old litter box for some time and pour some old litter with the cat's own scent into the toilet tray. Familiar scents will help the cat adapt to RealScooper more quickly.

### 3. Is it dangerous for the cat to enter during the scooping process?

If the cat enters during the scooping process, the monitoring sensor will be triggered immediately, and the device will stop running immediately. The device will resume operation 30 seconds after the cat leaves the litter house, so there is no need to worry about any danger.

### 4. What types of cat litter can I use?

This device supports only mineral clumping cat litter, the best adaptive cat litter we recommended are bentonite clumping cat litter and LALAHOME brand mineral clumping cat litter. Types of cat litter not supported include tofu cat litter, pine cat litter, crystal cat litter and other non-clumping types.

### 5. How much litter should I add?

It is recommended to add around 6.61lbs (3 kg) of mineral litter for the initial use (using self-refill to add litter approximately 3 cells).

## 6. When should I add more cat litter?

The device will automatically judge the remaining cat litter in the toilet tray and initiate a refill. Please replenish the cat litter reservoir in the device promptly based on APP notifications.

## 7. How often should I clean the waste bin?

It can vary based on specific usage conditions (such as the number of cats). It is recommended to change the waste bag every 7 days for one cat, every 5 days for two cats, and every 3 days for three cats (increase bag change frequency in hot weather).

## 8. How often should I clean the toilet tray?






It can vary based on specific usage conditions (such as the number of cats or their toilet habits). It is recommended to clean it around once a month.



Q&A

## VII. QUICK TROUBLESHOOTING

1. When the display screen shows the corresponding error codes below, please follow the corresponding solutions to resolve the issues.

ERROR CODE	PROBLEMS DESCRIPTION	SOLUTION
 1	THE TRASH BIN IS NOT IN PLACE.	PLEASE CHECK IF THE TRASH BIN IS INSTALLED PROPERLY.
 2	LITTER RESERVIOR IS EMPTY.	REFILL LITTER RESERVIOR BY DOUBLE-CLICKING THE RIGHT BUTTON ON THE SCREEN AND SELECTING “SET UP REFILL LITTER.”
 4	TRASH BIN IS FULL.	PLEASE CHECK IF THE TRASH BIN IS FULL AND CLEAN IT. WAIT FOR 60 SECONDS BEFORE PLACING IT BACK.
 8	SCOOP MOTOR BLOCKED PROTECTION IS ACTIVATED.	PLEASE CHECK IF THERE IS TOO MUCH LITTER IN THE TOILET TRAY, OR IF THERE ARE THICK URINE MASSES AND DIFFERENT OBJECT IN THE TOILET TRAY
 16	REFILL MOTOR BLOCKED PROTECTION IS ACTIVATED.	PLEASE CHECK IF THERE IS ANY OBSTRUCTION IN THE LITTER RESERVIOR

If you encounter a numerical code not mentioned above, it indicates the simultaneous occurrence of multiple errors. **For example: If error codes 1 and 2 appear simultaneously, the error representation will be 3.** If you are unable to resolve the issue, please contact customer service [info@lalahome.com](mailto:info@lalahome.com) for assistance.

When the display screen shows the corresponding error codes, please follow the corresponding solutions to resolve the issues. In case of device malfunctions, please send the error codes displayed on the screen to [info@lalahome.com](mailto:info@lalahome.com). Our after-sales engineers will assist users in troubleshooting based on the error codes.

For a more comprehensive FAQ, you can scan the QR code or visit the official website at [www.lalahome.com](http://www.lalahome.com).



## VIII. FCC RULES

**This device complies with Part 15 of the FCC Rules.**

**Operation is subject to the following two conditions:**

- (1) this device may not cause harmful interference, and**
- (2) this device must accept any interference received, including interference that may cause undesired operation.**



**This unit is Compliant with FCC Requirements.**

**FCC identifier: 2BBSE-LH1001**

**NOTE:**

This equipment has undergone testing and meets the requirements for a Class B digital device, as outlined in part 15 of the FCC Rules. These requirements are designed to provide reasonable protection against harmful interference when used in residential installations.

The equipment generates, uses, and may emit radio frequency energy which, if not installed and used in accordance with the instructions, could result in harmful interference with radio communications. It is important to note that there is no guarantee that interference will not occur in a particular installation.

If the equipment does cause harmful interference to radio or television reception, which can be confirmed by turning the equipment off and on, the user is advised to take one or more of the following actions to correct the interference:

- Reorient or relocate the receiving antenna.
- Increase the separation between the equipment and receiver.
- Use a different electrical circuit for the equipment than the one used by the receiver.
- Contact the dealer or an experienced radio/TV technician for assistance.

**Warning:**

**Any changes or modifications made to the equipment without the express approval of the party responsible for compliance may result in the user's authority to operate the equipment being voided.**

**The distance between user and products should be no less than 20cm.**

## IX. DESCRIPTION OF HAZARDOUS SUBSTANCES

CE

This unit complies with CE market standard.

Products comply with EU RoHS and REACH requirements.



## X. PRODUCT PARAMETERS

Product Name: REALSCOOPER Smart Cat Litter House

Model Number: LH1001

Internet Connection: WIFI: 2.4G & 5G, Bluetooth

Net Weight: 16 KG

Input: AC100~240V, 50/60Hz, 0.6A Max. Output: 12V $\overline{\text{---}}$ 2A

Implement Standard: UKCA, FCC-ID, CE-RED, RoHs, REACH, CA65,GB4706-1, PSE, TELEC, BSMI, NCC, KC

Manufacturer:Shenzhen LALAHOME Smartech Co.,Ltd.

Website: [www.lalahome.com](http://www.lalahome.com)

Shenzhen Lalahome Smartech Co., Ltd. has the right of final interpretation.