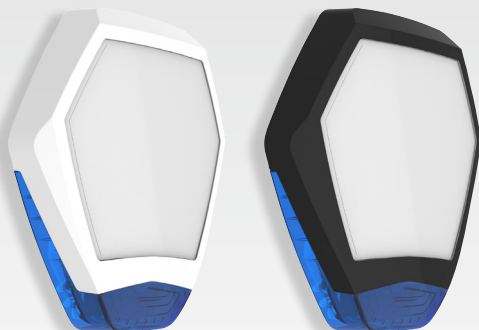
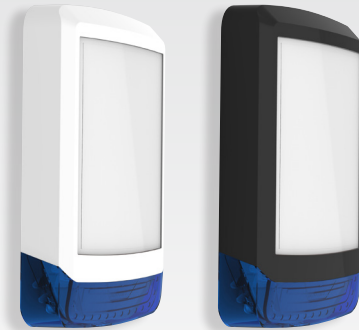


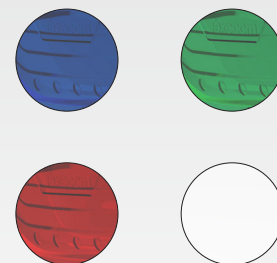
Odyssey X3 frame colours:



Odyssey X1 frame colours:



Lens colour options:



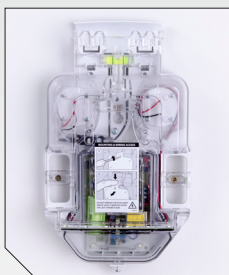
Custom Graphic Inserts

Available from your Texecom distributor, these photo quality custom designed graphic inserts replace traditional screen printing, enhancing quality and removing the need for installers and distributors alike to stock expensive custom screen printed covers.



Odyssey X Backplates

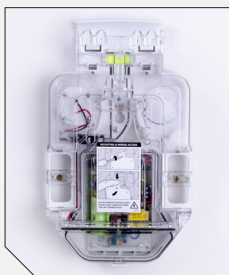
Backlit



Odyssey X-B

Grade 3 Sounder with Integral Backlight

- 115dB (A) twin piezo sounder
- Wall & cover tamper
- Patented engineer hold-off mode
- Battery monitoring with fault output
- Alternating white LED indication
- EN50131-4 Grade 3 Class IV

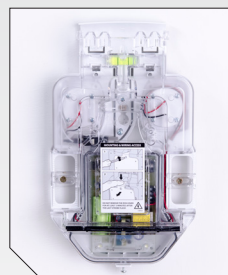


Odyssey X-BE

Grade 2 Sounder with Integral Backlight

- 109dB (A) piezo sounder
- Wall & cover tamper
- Patented engineer hold-off mode
- Alternating white LED indication
- EN50131-4 Grade 2 Class IV

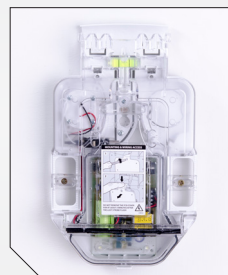
Conventional



Odyssey X

Grade 3 Sounder

- 115dB (A) twin piezo sounder
- Wall & cover tamper
- Patented engineer hold-off mode
- Battery monitoring with fault output
- Alternating white LED indication
- EN50131-4 Grade 3 Class IV

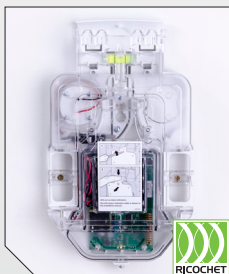


Odyssey X-E

Grade 2 Sounder

- 109dB (A) piezo sounder
- Wall & cover tamper
- Patented engineer hold-off mode
- Alternating white LED indication
- EN50131-4 Grade 2 Class IV

Wireless



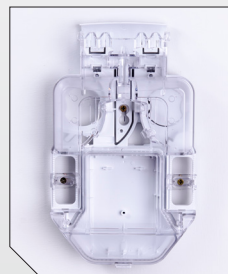
Odyssey X-W

Wireless Sounder

- 105dB (A) piezo sounder
- Wall & cover tamper
- Selectable comfort LEDs
- Ricochet® mesh technology
- 8 x AA lithium batteries included
- EN50131-4, EN50131-5-3 Grade 2 Class IV



Dummy



Odyssey X-D

Dummy Sounder

- No electronics included
- Imitation sounder
- Low cost deterrent
- Accepts X1 and X3 covers

ODYSSEY X SERIES PART NUMBERS

ODYSSEY X COVERS

WDA-0001	Odyssey X1 Cover (White/Blue)
WDA-0002	Odyssey X1 Cover (White/Red)
WDA-0003	Odyssey X1 Cover (White/White)
WDA-0007	Odyssey X1 Cover (White/Green)
WDA-0004	Odyssey X1 Cover (Black/Blue)
WDA-0005	Odyssey X1 Cover (Black/Red)
WDA-0006	Odyssey X1 Cover (Black/White)
WDA-0008	Odyssey X1 Cover (Black/Green)
WDB-0001	Odyssey X3 Cover (White/Blue)
WDB-0002	Odyssey X3 Cover (White/Red)
WDB-0003	Odyssey X3 Cover (White/White)
WDB-0008	Odyssey X3 Cover (White/Green)
WDB-0004	Odyssey X3 Cover (Black/Blue)
WDB-0005	Odyssey X3 Cover (Black/Red)
WDB-0006	Odyssey X3 Cover (Black/White)
WDB-0007	Odyssey X3 Cover (Black/Green)

ODYSSEY X BACKPLATE OPTIONS

WDC-0001	Odyssey X-BE
WDC-0002	Odyssey X-B
WDD-0001	Odyssey X-E
WDD-0002	Odyssey X
WDE-0001	Odyssey X-D
GBV-0001	Odyssey X-W

TECHNICAL SPECIFICATIONS

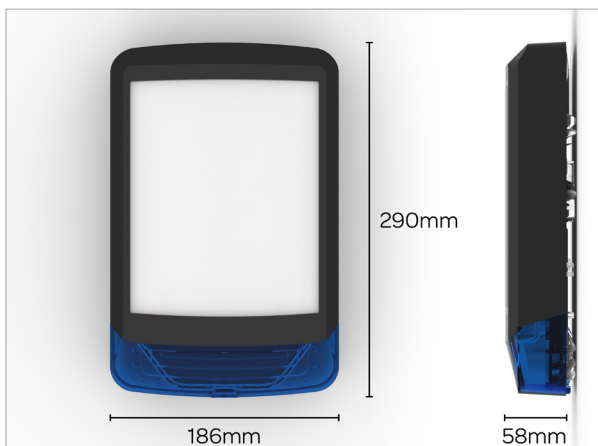
WIRED UNITS

Supply Voltage:	12-16 VDC (13.7 nominal)		
Current Drain (typical at 13.7VDC):			
Quiescent:	18mA + 40mA (Backlit version)		
Strobe:	100mA		
Sounder	SAB	LC	SCB
X-E:	285mA	160mA	30mA
X-BE:	325mA	200mA	70mA
X:	405mA	190mA	30mA
X-B:	445mA	230mA	70mA
Standby Battery :			
Type:	NiMh Stack		
Voltage:	7.2VDC (nominal)		
Capacity:	250mAh		
Flash Tube:	1Ws Xenon		
Comfort LEDs:			
Brightness:	100mcd (typical)		
Flash Rate (tamper secure):	1Hz alternating (typical)		

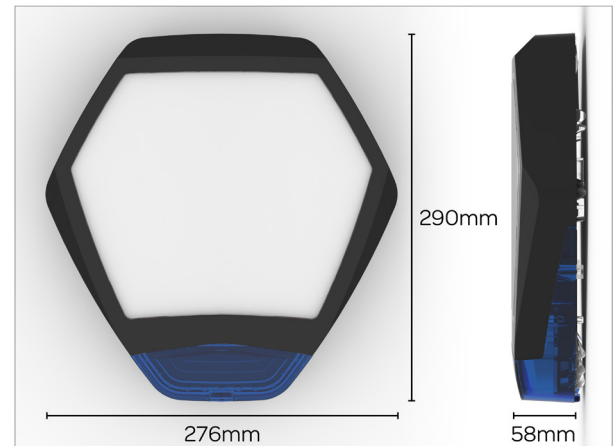
ENVIRONMENTAL

Volume (SAB mode at 13.7 VDC):	
X-W:	105dB(A)
X-E & X-EB:	109dB(A)
X & X-B:	115dB(A)
Acoustic Output:	Varying Sound Output
Cut-Off Time:	15 minutes
Waterproof Coating:	Conformal
Operating Temperature:	-25°C to +55°C
Storage Temperature:	-25°C to +60°C

ODYSSEY X1 DIMENSIONS



ODYSSEY X3 DIMENSIONS



Texecom products are designed and manufactured in the UK



www.texe.com
Sales: +44 (0)1706 220460