

Gothic Wall Plant Holder

Tools Required To Make this Design:

- Punching: Practical Punch/Shear (or Master Punch/Shear or XL5+ Power Bender fitted with 3mm Punch Block & Pins)
 Cutting: Practical Punch/Shear (or Master Punch/Shear or XL5+ Power Bender)
 Riveting: Practical RBR
 Bending: Practical RBR
 Rolling: Practical RBR
 Scrolling: Mk1/2 Scroll Former

We recommend that before starting you wipe all steel bars down so that they are free of grease, scale or dirt. After cutting any component, we also recommend that you trim the corners for a neater finish, if preferred, unless these instructions tell you otherwise. Use a fine tip marker pen, pencil or scribe for marking hole, bend, scroll, roll points on the bars.

Assembly Notes	
There is sufficient steel for two options. Option 1: Wall planter without "shutters" with enough steel to make 2 of these. Option 2: Wall Plant Holder with "Shutters". * Additional quantities required for Option 2. (*)	
Component 1	Centre Mullion 12mm x 2mm x 545mm (1)
From 1 length of 12 x 2 x 914mm steel strip, using the Practical Punch/Shear Tool (PPS), cut 1 strip, 545mm long. Set remainder of steel strip aside for Component 3. Chamfer all corners using the PPS. Mark hole positions H1-H6 and punch using the PPS.	
Component 2	Arch Side 12mm x 2mm x 650mm (2/4*)
From 2 lengths of 12 x 2 x 914mm steel strip, cut 2 strips, each 650mm long. Chamfer all corners. On each strip, mark hole positions H7-H13, bend position B1, roll positions R1 and R2 and Scroll position S1. Using the Practical Riveting, Bending & Rolling Tool (PRBR) roll strip between R1 and R2. Then using the Mk 1/2 Scroll Former, scroll each non punched end up to S1. Using the PRBR, form right angle bend at B1. Punch all marked holes using the PPS. See Component 2 on Template Sheet 1 for profile.	
Components 3	Sill Section 12mm x 2mm x 330mm (1)
From left over steel for Component 1, cut 1 strip, 330mm long to form Component 3. Chamfer all corners. Mark and punch hole positions H14-H17 using the PPS.	
Components 4	Large Scroll 10mm x 1.6mm x 330mm (6/12*)
From 3 lengths of 10 x 1.6 x 914mm steel strip, cut 6 strips, each 330mm long. Set remainder of steel strip aside for Component 6. Mark hole positions H18 and H19 and scroll position S2. Scroll 110mm from the end to S2 and then roll each strip using the PRBR from S2 to the other end of the strip. Punch all marked holes. See Component 4 Template Sheet 1 for profile.	

Components 5	Medium Scroll 10mm x 1.6mm x 310mm (2/4*)
From 1 length of 10 x 1.6 x 914mm steel strip, cut 2 strips, each 310mm long. Mark hole positions H20 and H21 and scroll position S3. Scroll 110mm from end to S3 and then roll each strip using the PRBR from S3 to the other end of the strip. Punch all marked holes. See Component 5 Template Sheet 1 for profile.	
Components 6	Small Scroll 10mm x 1.6mm x 250mm (2/4*)
From left over steel for Component 4, cut 2 strips, each 250mm long to form Component 6. Mark hole positions H22 and H23 and scroll position S4. Scroll 110mm from end to S4 and then roll from S4 to the other strip end. Punch all marked holes. See Component 6 on Template Sheet 1 for profile.	
Components 7 & 8	Pot Holder Hoops & Brackets 12mm x 2mm x 375mm (2) 12mm x 2mm x 25mm (2)
N. B. This is for two 5" planters/pots (not included), please adjust the sizes accordingly if you are using different size pots. From 1 length of 12 x 2 x 914mm steel strip, cut 2 strips, each 375mm long and 2 strips each 25mm long. On short strip, mark hole positions H24-H25 and bend position B3. Form right angle at B3 and punch marked holes. Roll 375m strips to form circular hoops and punch holes H26. See components 7 and 8 on Template Sheet 1 for profiles.	
Component 9	Shutter Stile (Option 2) 12mm x 2mm x 715mm (2)
From 2 lengths of 12 x 2 x 914mm steel strip, cut 2 strips, each 715mm long. Mark hole positions H27 and H33 and bend position B4. Form right angle at B4 and punch marked holes.	

Assembly Instructions
 1) The following instructions are for assembling the Plant Holder only-Option 1.
 Using the Assembly Sheet as a guide, arrange Components 1 to 6 on a flat surface and assemble using the nuts and bolts provided. If required, make any necessary adjustments to individual components to achieve the desired appearance.
 2) Rivet the Bracket (Component 7) to the outside face of the Pot Holder Hoop (Component 8) using holes H25 and H26. Repeat for second pot holder.
 3) Nut & bolt the Pot Holders with attached brackets to top face of sill Section (Component 3) using holes H24 (on Bracket) and H15 and H16 -Component 3.
 4) At this point if you **do not** wish to add the shutters replace the nuts and bolts with rivets.
 Option 2
 1) Repeat steps 1-3 for Option 1
 2) Using Components, 2, 4, 5, 6 and 9, assemble 2 shutters using nuts and bolts. Fixing one shutter either side as on the Assembly Sheet, make any necessary adjustments to individual components to achieve the desired appearance. When you are satisfied with the planter finish off by completely riveting it all.



metalcraft

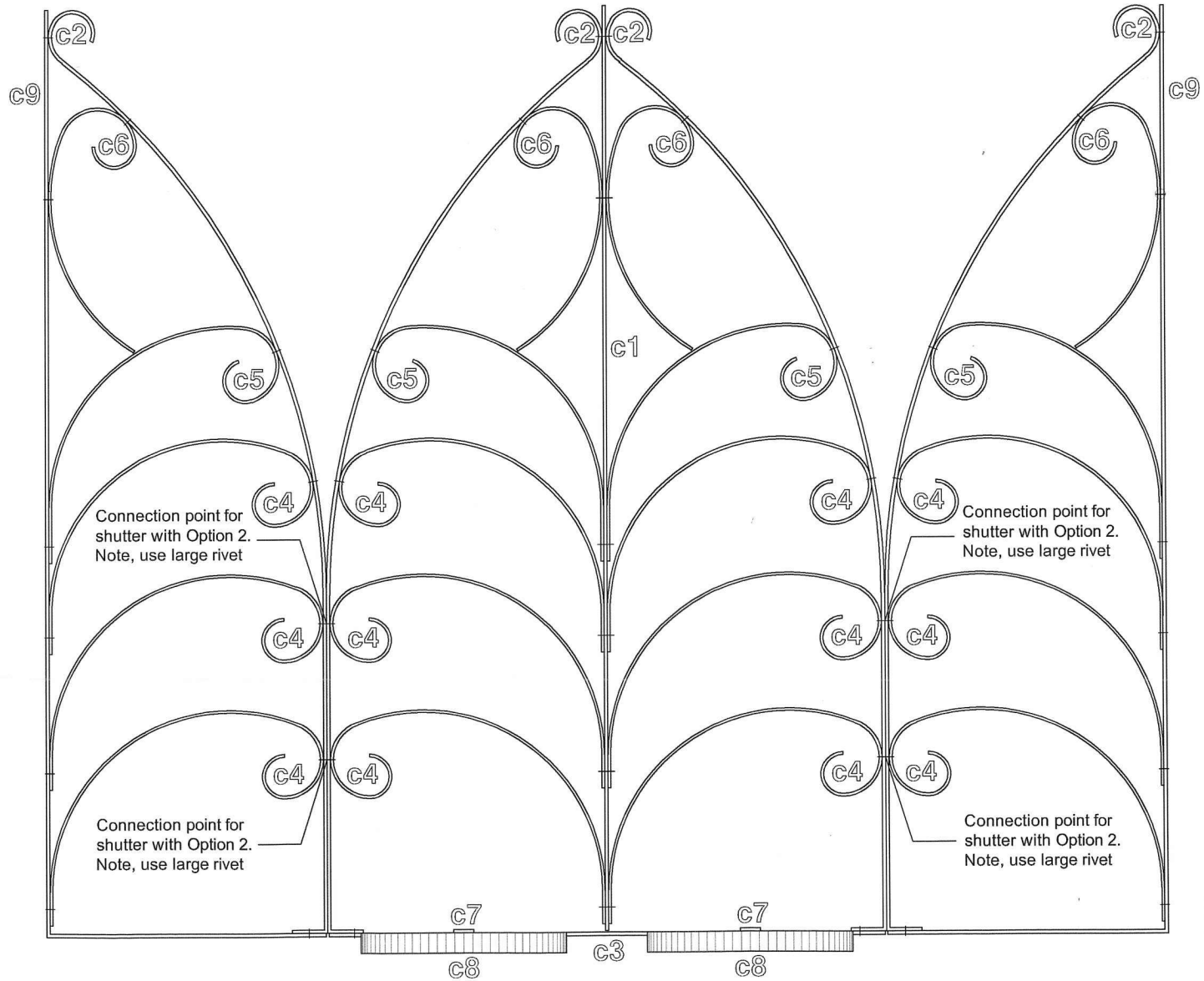
Design Pack Gothic Wall Plant Holder

Difficulty Rating:	
Easy	
Straightforward	✓
More complex	

KEY:

© denotes Component

PLANT HOLDER



SHUTTER (OPTION 2)

POT HOOP

POT HOOP

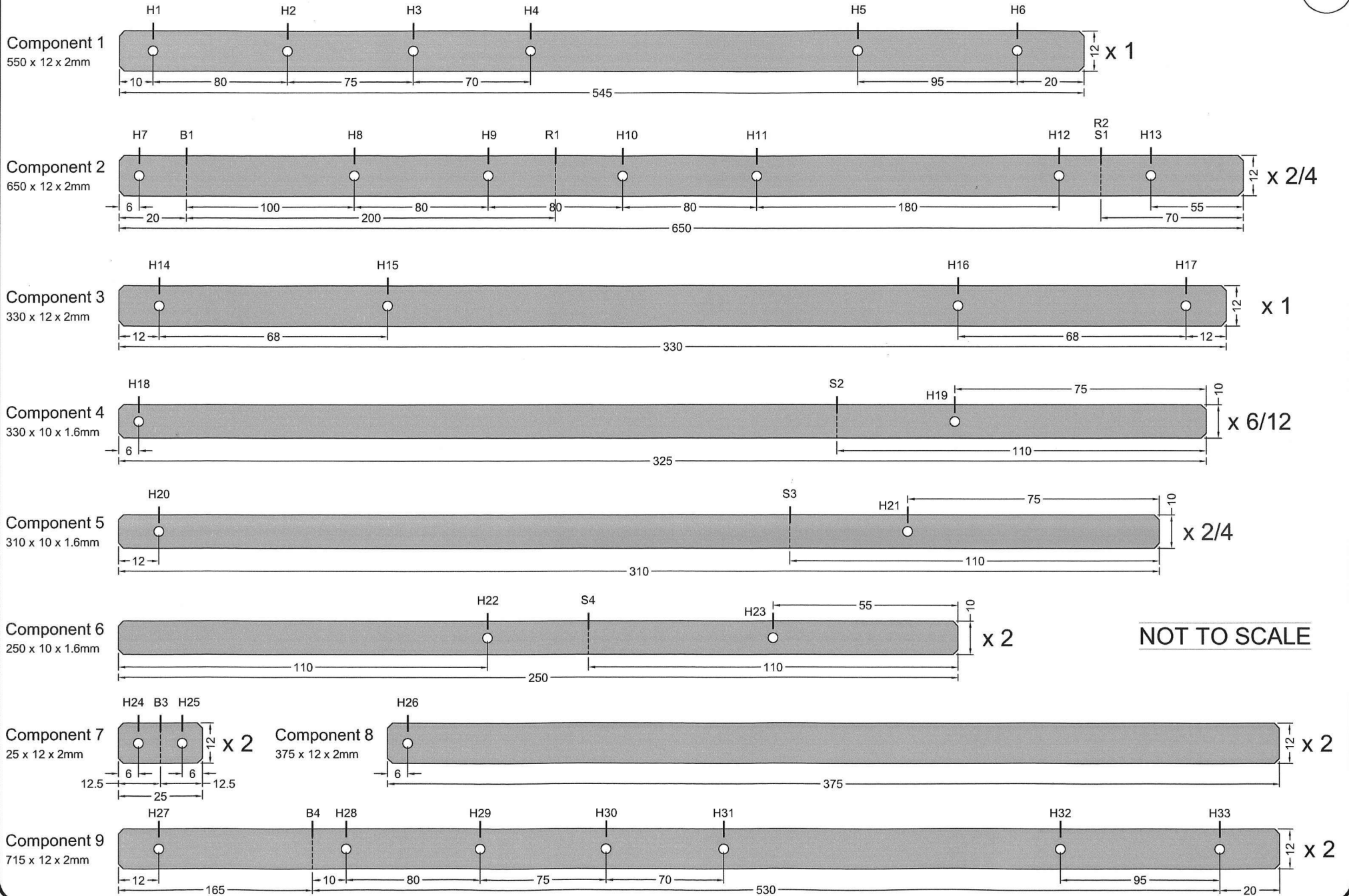
SHUTTER (OPTION 2)

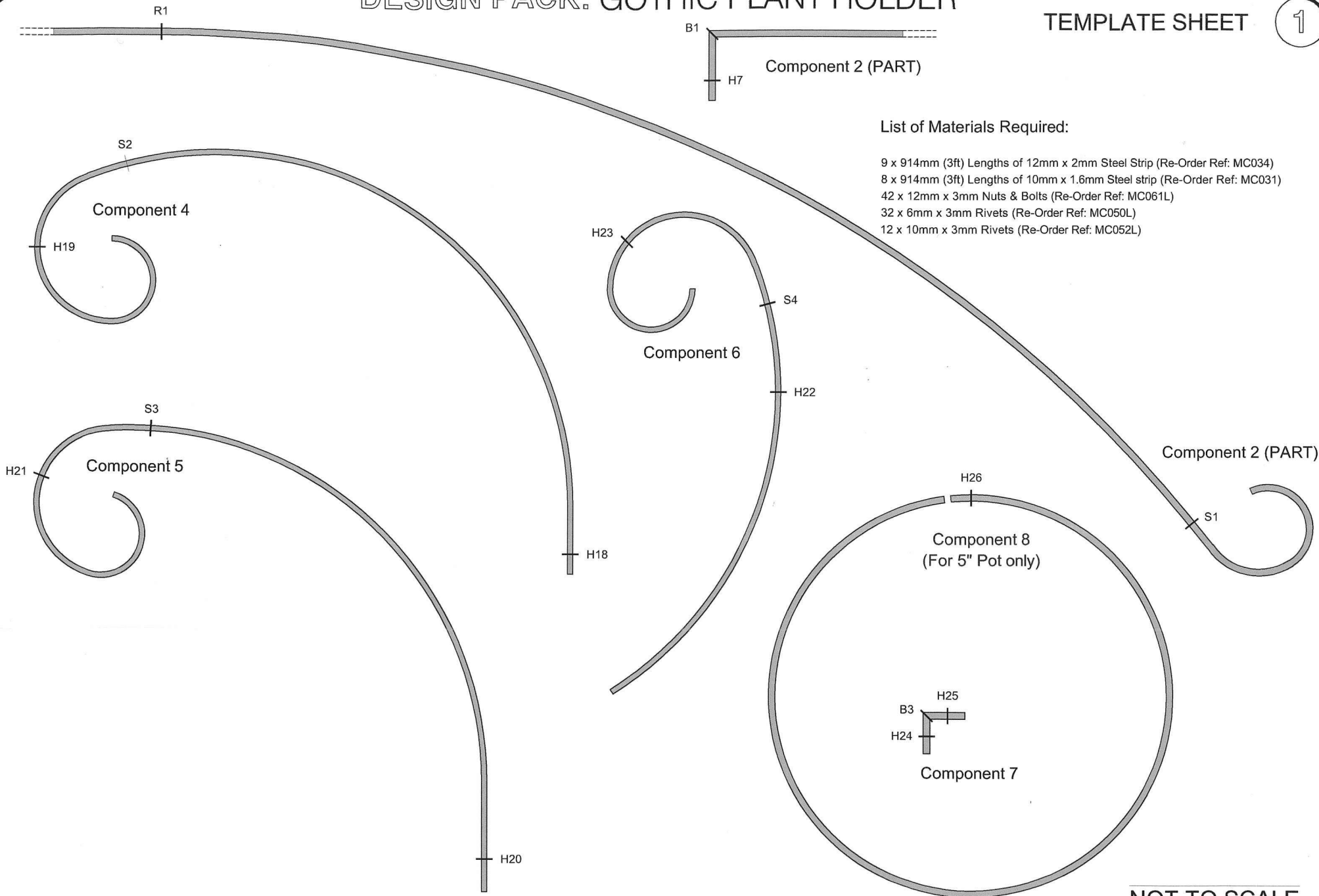
NOT TO SCALE

DESIGN PACK: GOTHIC PLANT HOLDER

COMPONENT SHEET

1





List of Materials Required:

- 9 x 914mm (3ft) Lengths of 12mm x 2mm Steel Strip (Re-Order Ref: MC034)
- 8 x 914mm (3ft) Lengths of 10mm x 1.6mm Steel strip (Re-Order Ref: MC031)
- 42 x 12mm x 3mm Nuts & Bolts (Re-Order Ref: MC061L)
- 32 x 6mm x 3mm Rivets (Re-Order Ref: MC050L)
- 12 x 10mm x 3mm Rivets (Re-Order Ref: MC052L)

NOT TO SCALE