

Work Instruction Name	Date
Chain Lubrication and Cleanliness Check	22/11/2024

Version Number	Cargo Bike Version
SGG021	

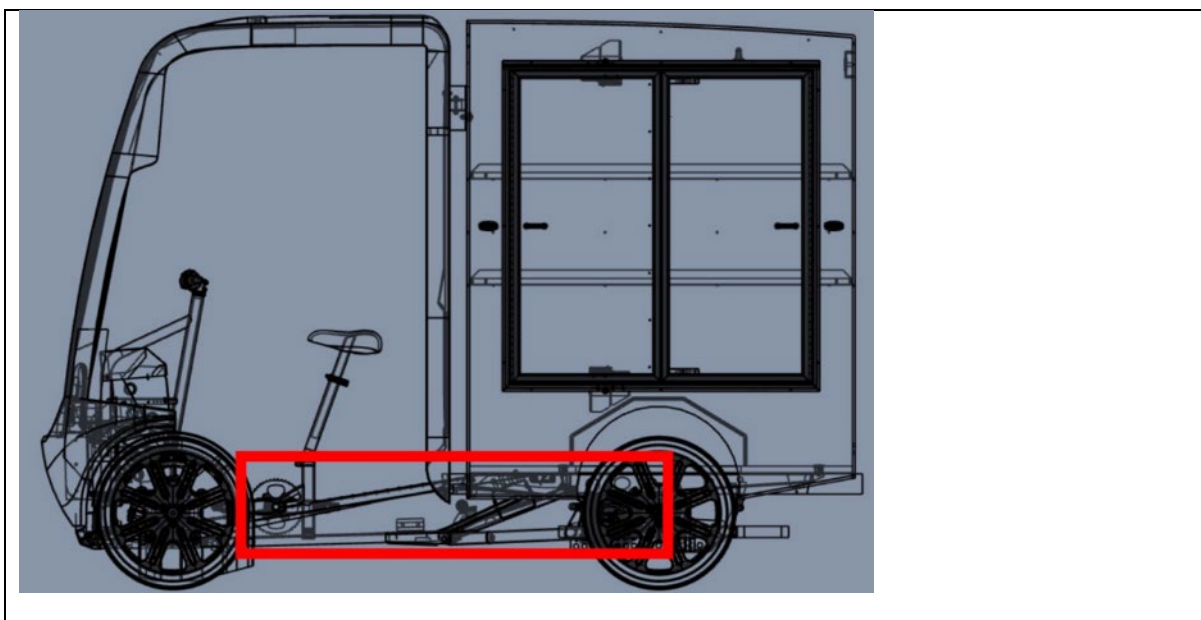
Tools Required - None



This is the SAFETY ALERT SYMBOL. It is used to alert you to potential personal injury hazards. Obey all safety messages that follow this symbol to avoid possible injury or death.

WARNING - A WARNING indicates a hazardous situation which, if not avoided, could result in death or serious injury.

NOTICE - A NOTICE indicates special precautions that must be taken to avoid damage to the vehicle or other property.



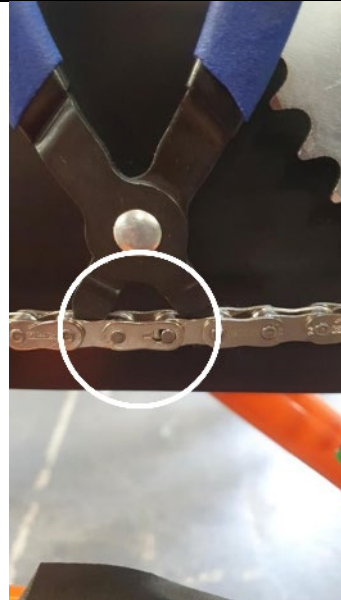
Process Step

Step 1 – Ensure that the chain is clean and lubricated as necessary.

Step 2 – Pedal backwards looking for any stiff links and check for split link is together correctly



Step 3 – Check chain link is secure and not damaged.



Document uncontrolled when printed