



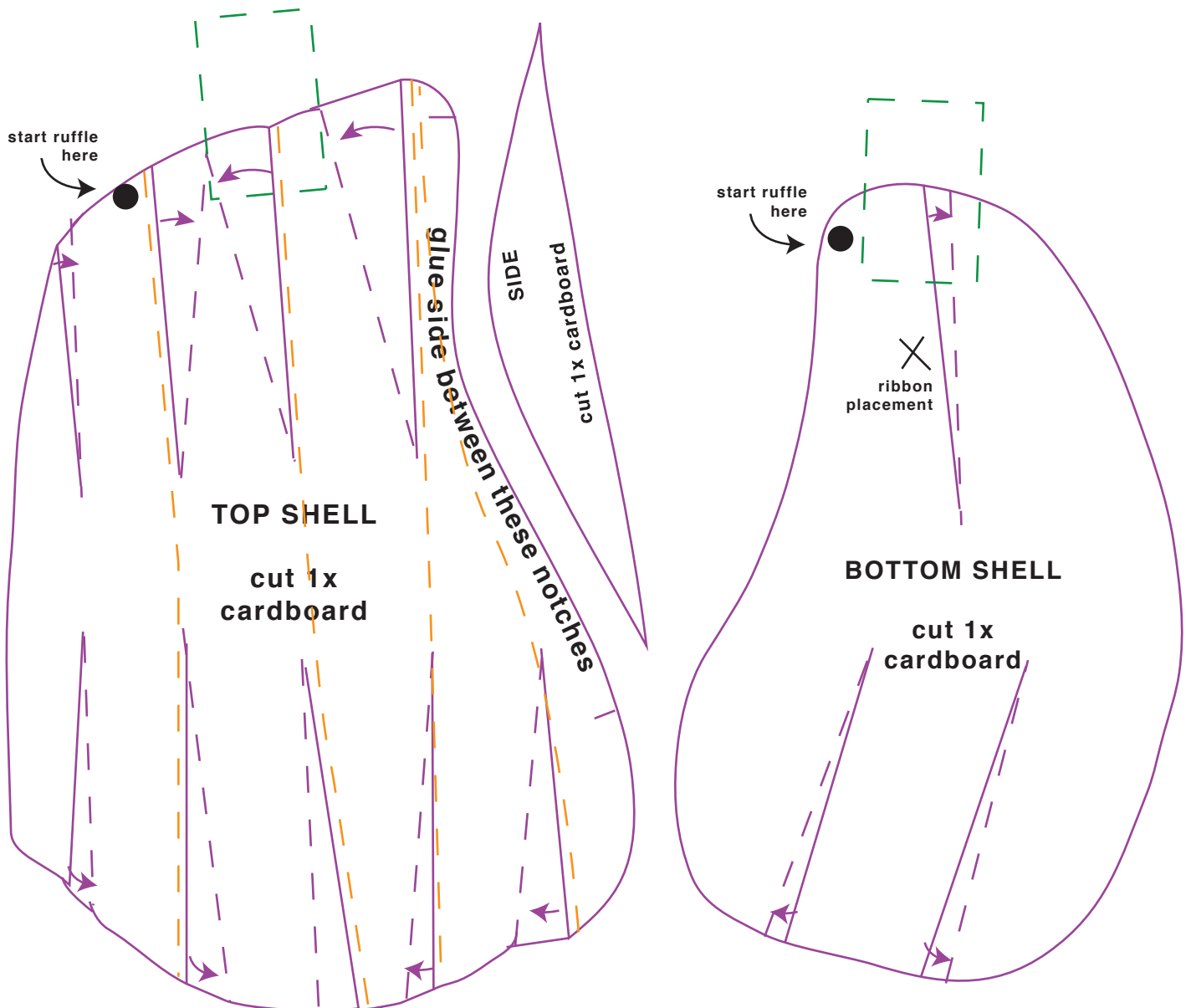


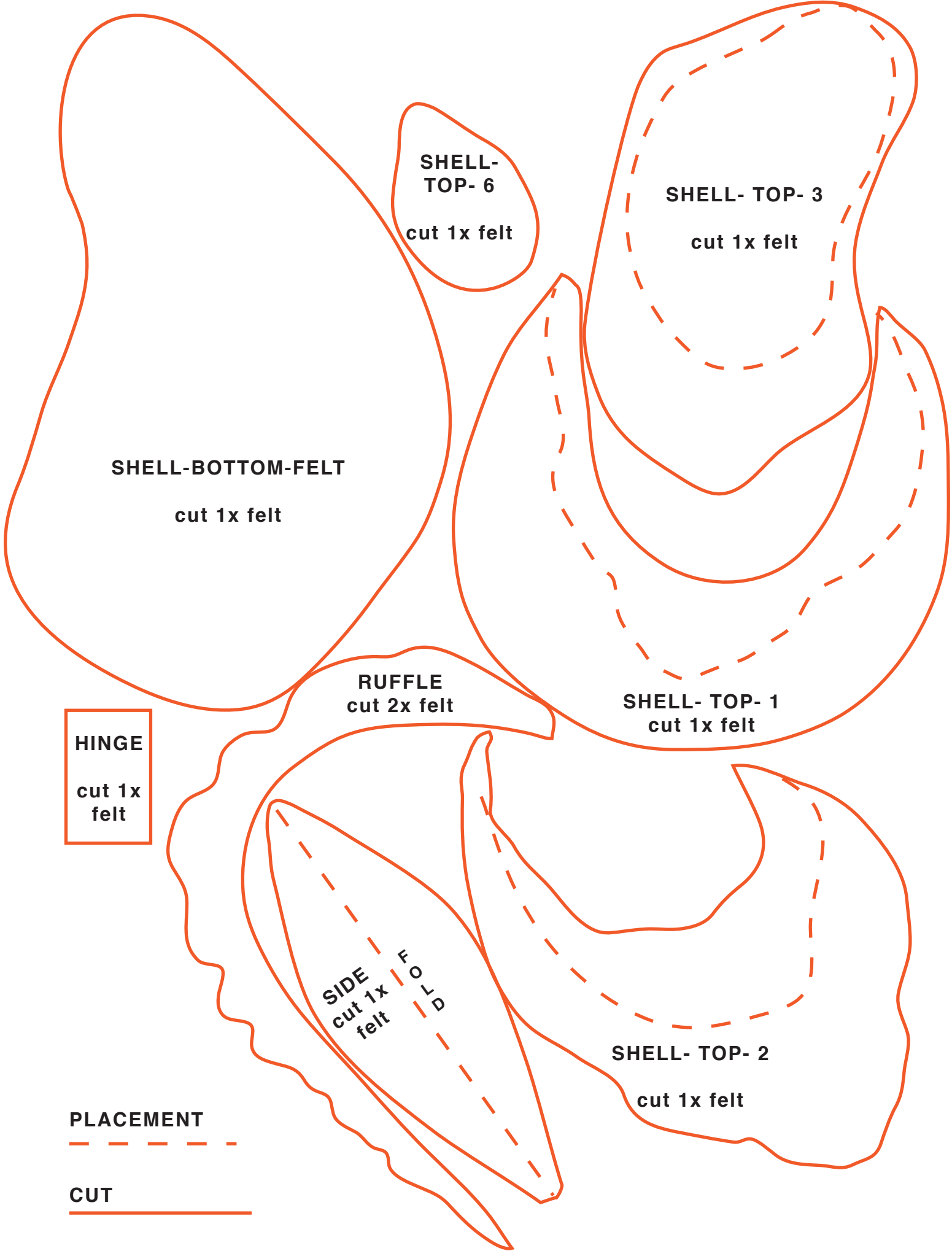
OYSTER TRINKET BOX

the adventure department for benzie design

print all pages at 100 % for the oyster in the tutorial, but
scale up and down as desired for larger or smaller oysters!

-  DO NOT CUT- DART GUIDE ONLY
-  CUT
-  RIB PLACEMENT
-  HINGE PLACEMENT





SHELL-TOP- 6
cut 1x felt

SHELL- TOP- 3
cut 1x felt

SHELL-BOTTOM-FELT
cut 1x felt

RUFFLE
cut 2x felt

SHELL- TOP- 1
cut 1x felt

HINGE
cut 1x
felt

SIDE
cut 1x
felt

FOLD

SHELL- TOP- 2
cut 1x felt

PLACEMENT



CUT



