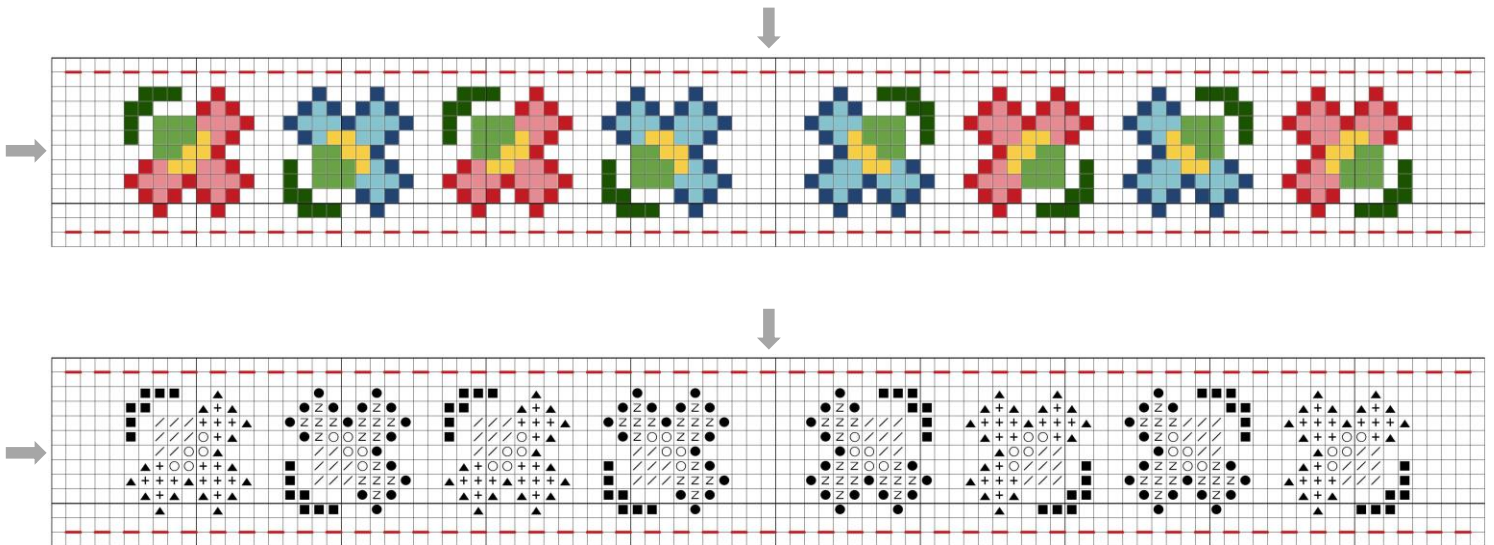


Floral Cross Stitch Pattern

The patterns below are identical. For your convenience, one view shows the stitches as solid color blocks, the other as symbols. Arrows denote pattern center.

Stitch the main floral design first and finish with the red backstitch along the edges.



Full cross stitch – Use two strands of DMC floss

■	z	598	Turquoise – LT
■	○	725	Topaz
■	+	760	Salmon
■	▲	817	Coral Red – VY DK
■	●	824	Blue – VY DK
■	■	895	Hunter Green – VY DK
■	/	988	Forest Green – MD

Backstitch – Use two strands of DMC floss

-	-	817	Coral Red – VY DK
---	---	-----	-------------------