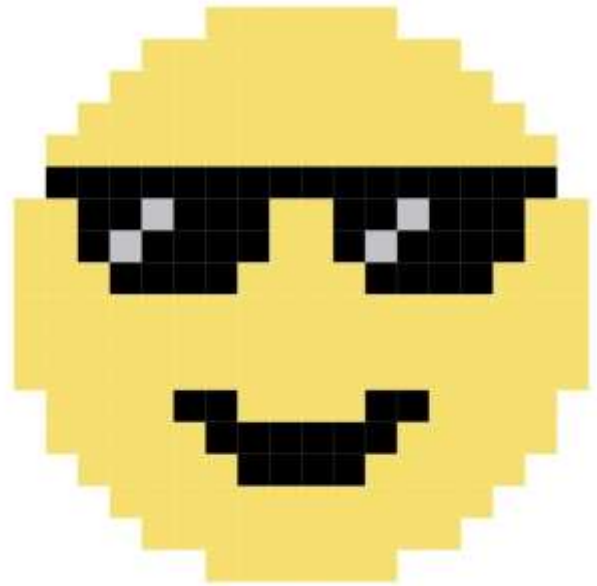
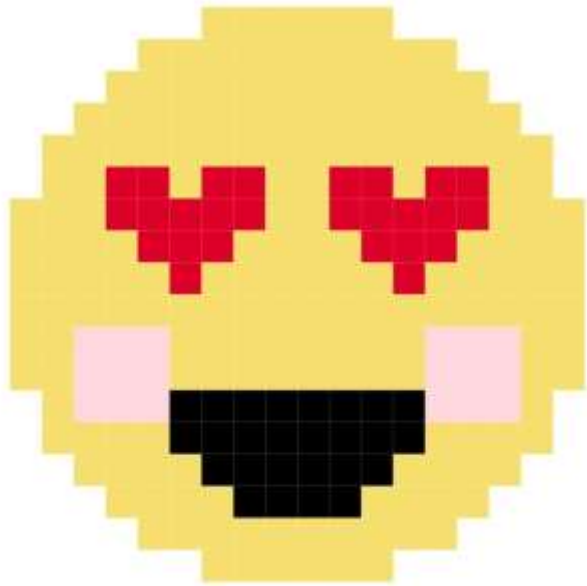


Emoji Cross Stitch Pattern



created by (not so) Modern Millie for Benzie Design

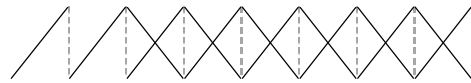
Cross Stitch Instruction

Cross stitch fabric is made up of small squares created by the crosswise and lengthwise woven threads. Each square represents a square on your pattern.

You may start at any point, but be sure to center the design on the fabric. To find the center of your fabric, fold it in half lengthwise and crosswise. On the pattern, count the number of squares from the center of the chart to where you wish to start. Then from the fabric's center, find your starting point by counting out the same number of stitches (or squares).

Thread your needle with 2 strands of embroidery floss. (There are 6 strands total.) Leave a long enough tail on the back side of your work so you can hold it in place while your first few stitches are worked over it. This secures your thread. Do not tie a knot in your thread.

Full stitches: Create each stitch using diagonal lines (left to right) then stitch back over the row (right to left), creating Xs.

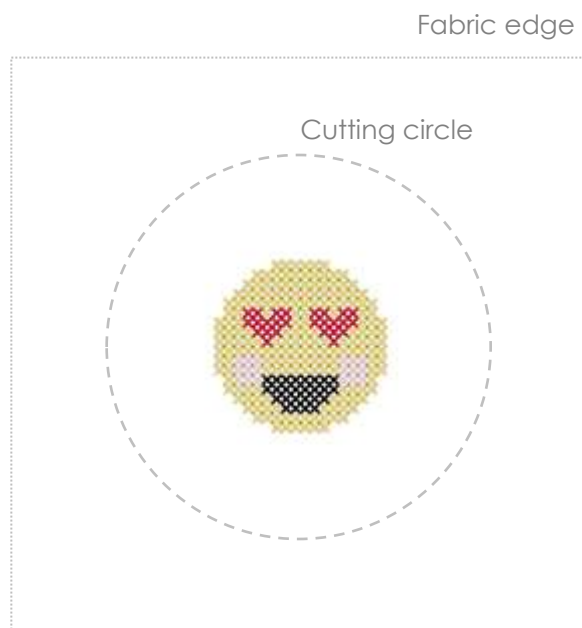


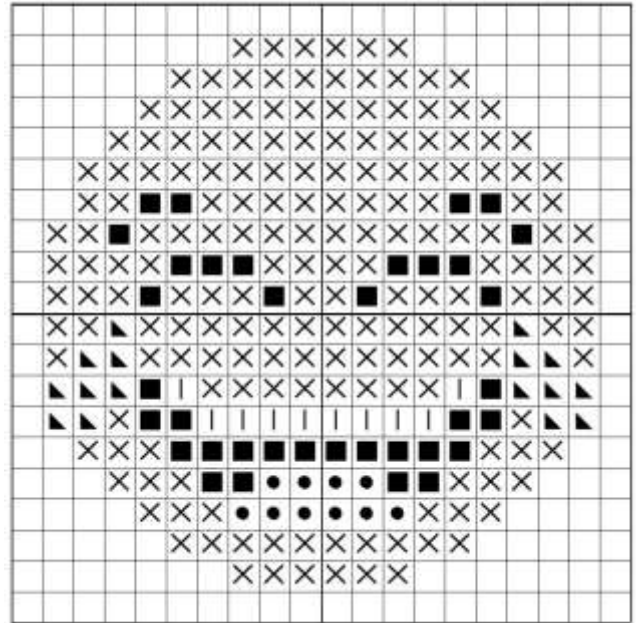
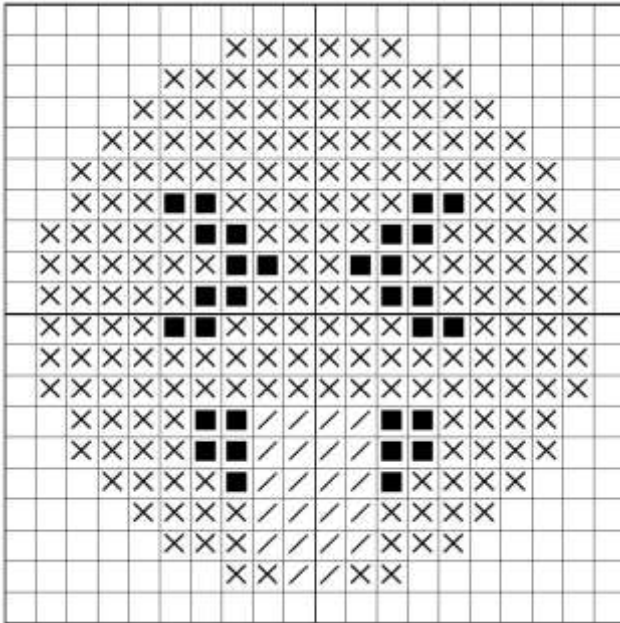
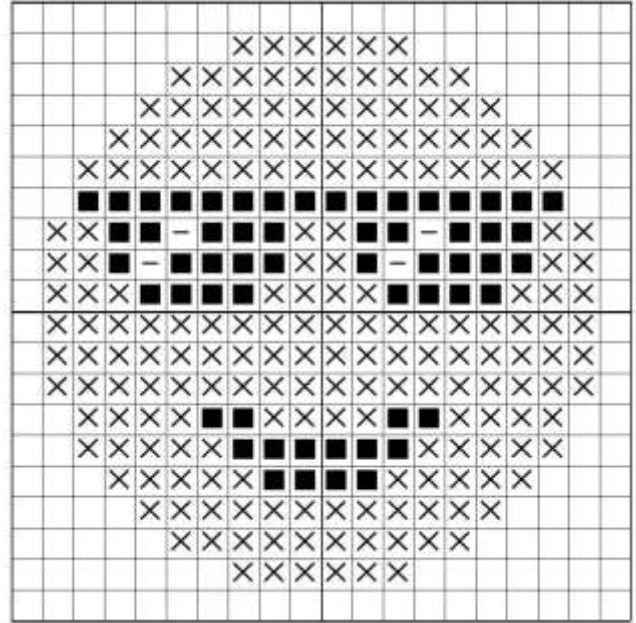
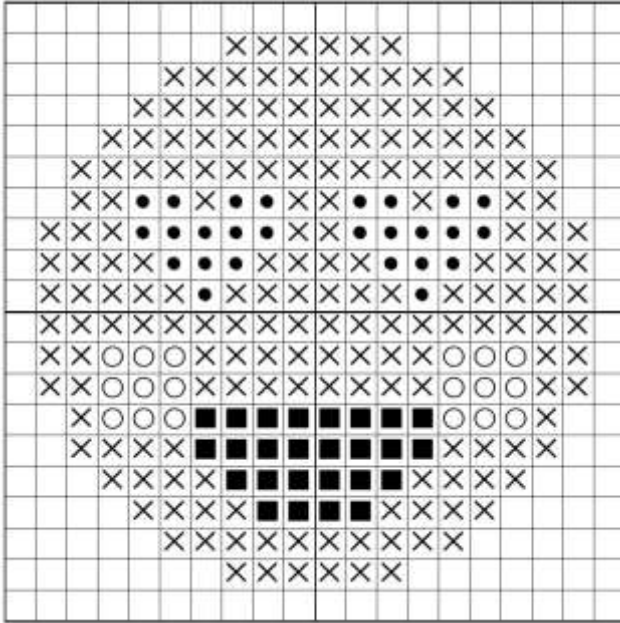
To end stitching: On the backside of your fabric, run the needle under 4 or 5 stitches to secure the thread. Cut the thread close to the fabric so there will not be loose strands that could get caught up in other stitches.

Finishing Instruction

Once you have completed your cross stitch, remove the fabric from the embroidery hoop (if using) and iron. Lay the fabric flat and cut a 3" circle around the finished design.

Center the fabric circle over the button. Tuck the raw edges behind into the button's teeth. Snap the backplate onto the button.





Full stitches:

■	310	Black	×	726	Topaz – LT
–	415	Pearl Gray	▲	798	Delft Blue – DK
/	603	Cranberry	○	963	Dusty Rose – UL VY LT
●	666	Christmas Red – BRT		White	White