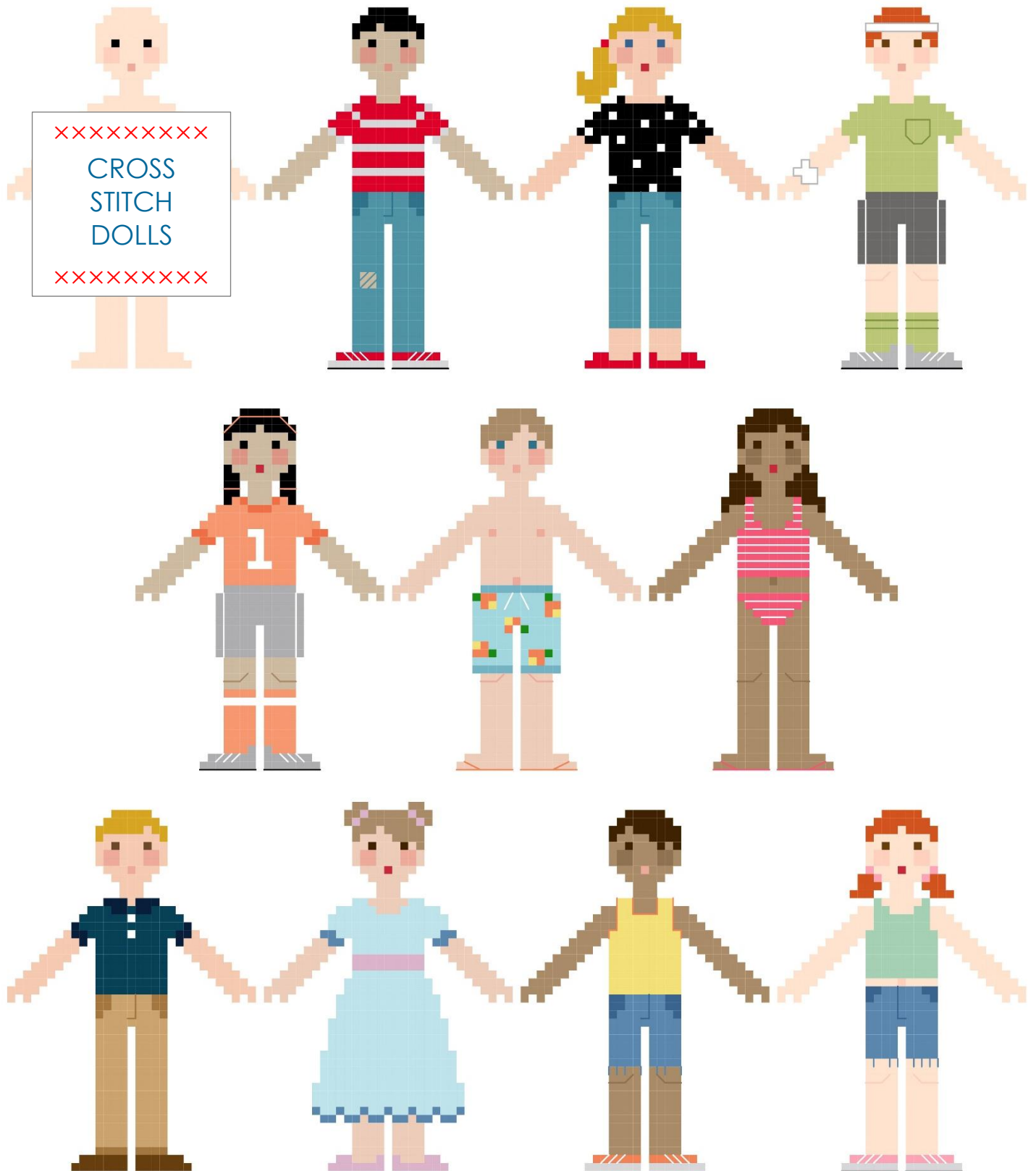


Cross Stitch Doll Customizable Pattern

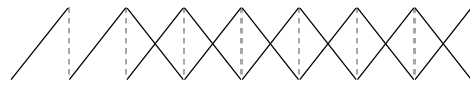


Cross Stitch Instruction

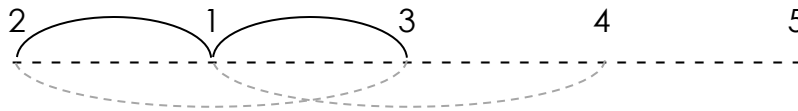
Each square on the pattern represents a square on your perforated felt. You may start stitching at any point, but be sure to count properly so your dolls will fit onto the sheet.

Thread your needle with the embroidery floss. The more strands you use, the more coverage you will have. Leave a long enough tail on the back side of your work so you can hold it in place while your first few stitches are worked over it. This secures your thread. Do not tie a knot in your thread.

Full stitches: Create each stitch using diagonal lines (left to right) then stitch back over the row (right to left), creating Xs.



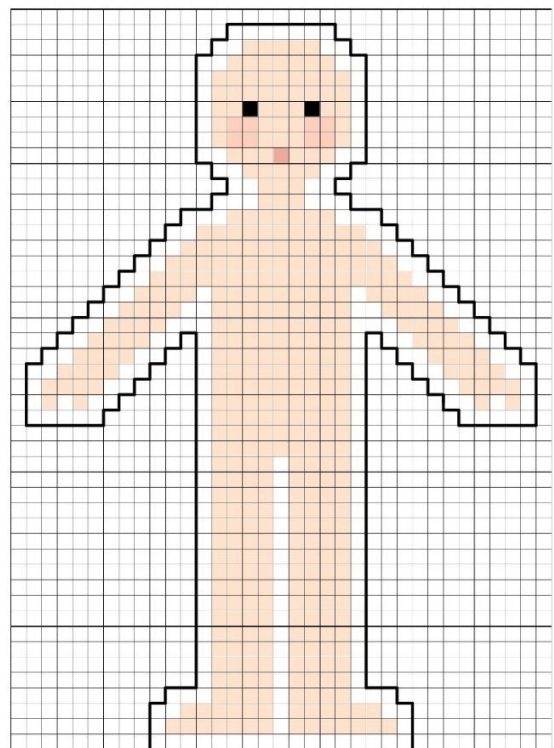
Back stitches: Begin by bringing your needle up through the felt (1) and then back down (2) to make a single stitch. Bring the needle back up a space away from the first stitch (3) and back down through the end of the first stitch (1).

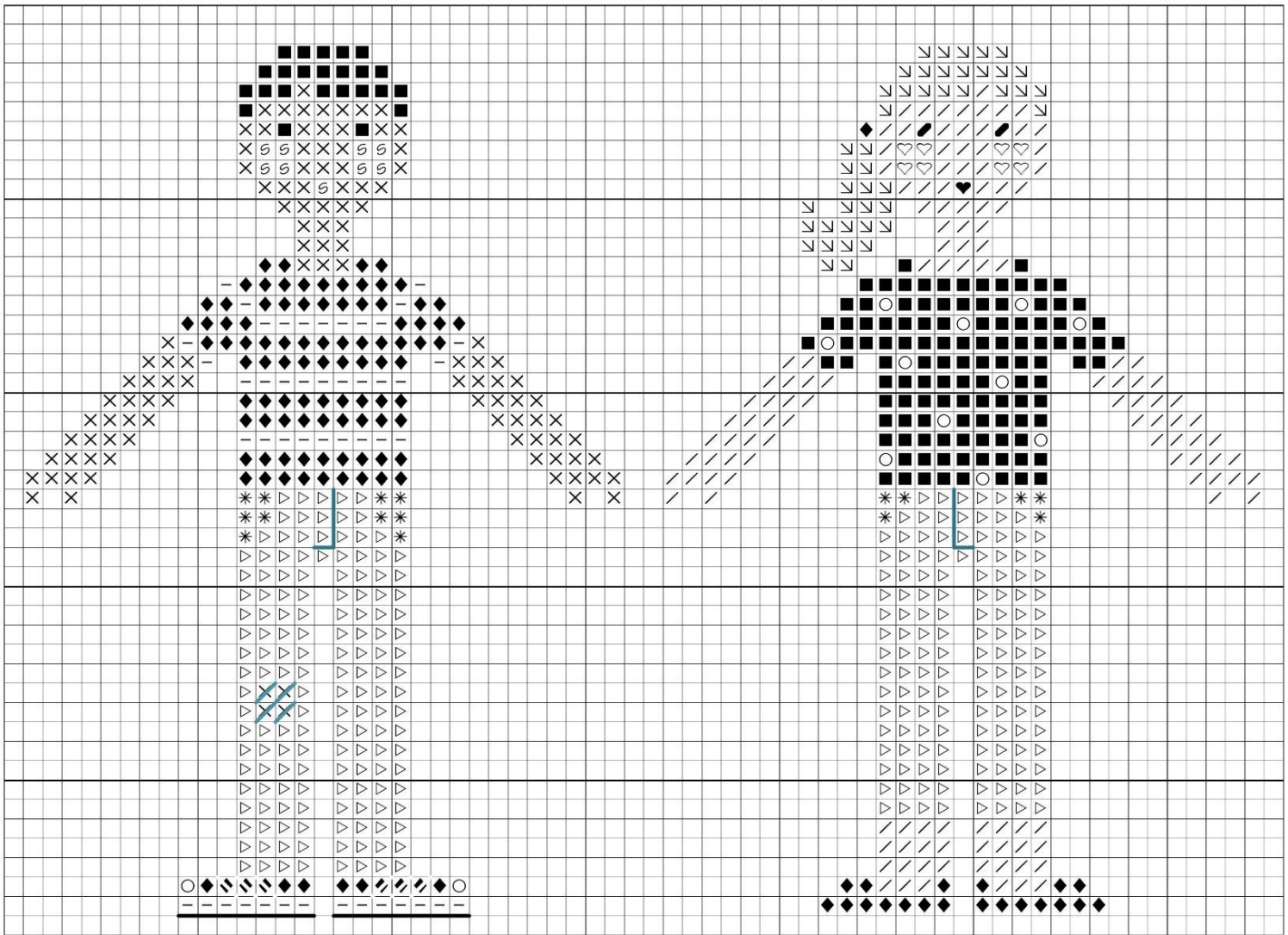


To end stitching: On the backside of your felt, run the needle under 4 or 5 stitches to secure the thread. Cut the thread close to the felt so there will not be loose strands that could get caught up in other stitches.

Finishing Tips

- The patterns that follow have color suggestions, but can be altered to better match the desired skin and hair color or to use floss you have on hand.
- When stitching, do not cross large spaces outside of the doll's body (ex. from arm to foot) because these threads will be severed when the doll is cut out.
- The diagram to the right shows how to cut out your doll. The black outline is the cutting line. Allow at least one square between the cutting line and your stitches so you do not cut and undo your work.



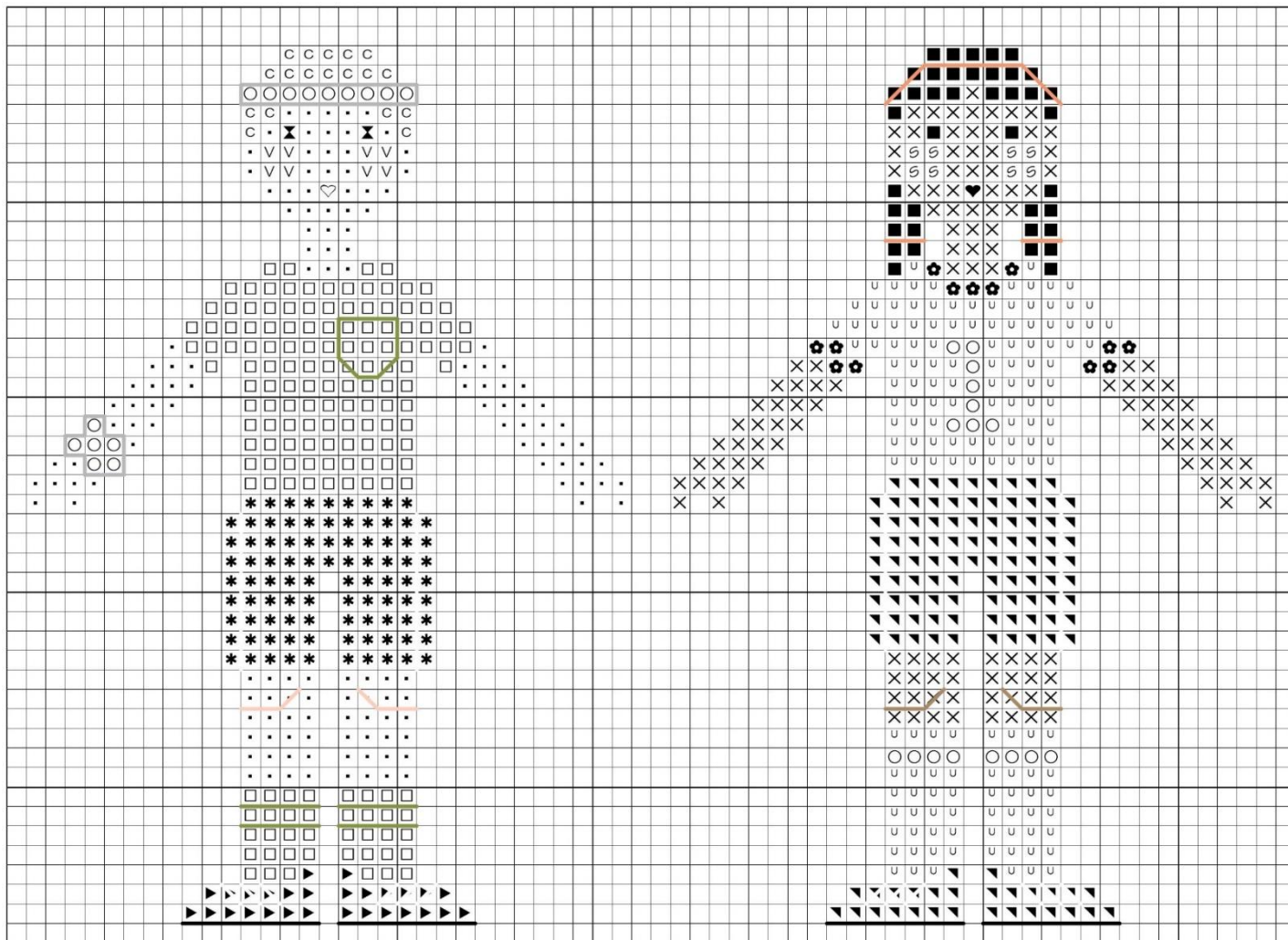


Full stitches:

- | | | |
|---|-------|---------------------|
| ○ | White | White |
| - | 02 | Tin |
| ■ | 310 | Black |
| ♥ | 321 | Christmas Red |
| * | 517 | Wedgewood – DK |
| ▷ | 518 | Wedgewood – LT |
| ◆ | 666 | Christmas Red – BR |
| ♡ | 758 | Terra Cotta – VY LT |
| ♣ | 825 | Blue – DK |
| Ⓢ | 3778 | Terra Cotta – LT |
| ↘ | 3852 | Straw – VY DK |
| / | 3856 | Mahogany – UL VY LT |
| X | 3864 | Mocha Beige – LT |

Back stitches:

- | | | |
|---|-------|----------------|
|  | White | White |
|  | 310 | Black |
|  | 517 | Wedgewood – DK |
|  | 518 | Wedgewood – LT |



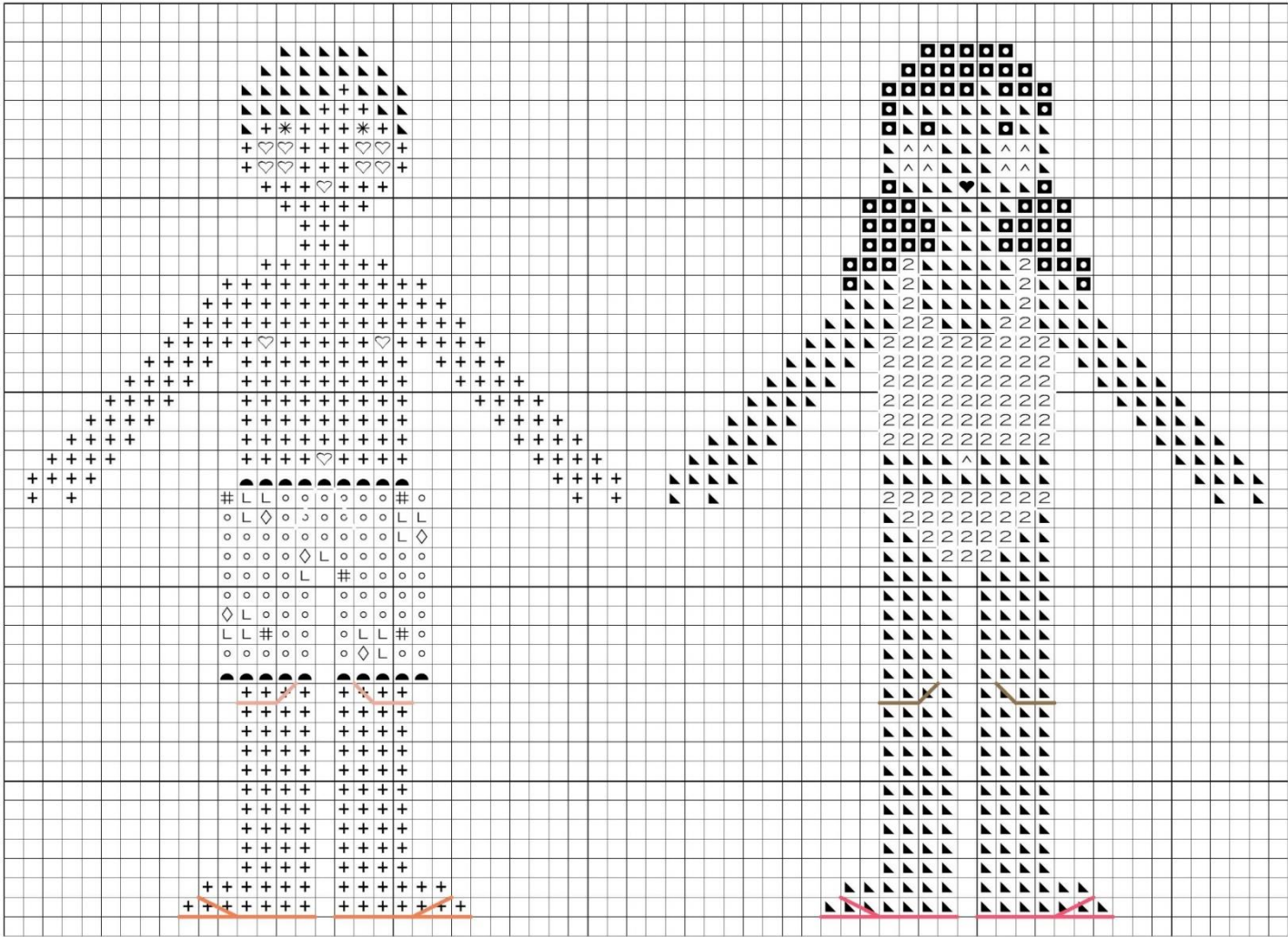
Full stitches:

○	White	White
▶	03	Tin – MD
▼	04	Tin – DK
■	310	Black
♥	321	Christmas Red
□	471	Avocado Green – VY LT
⊗	720	Orange Spice – DK
u	722	Orange Spice – LT
♡	758	Terra Cotta – VY LT
⊗	801	Coffee Brown – DK
C	920	Copper – MD
▪	951	Tawny – LT
V	967	Apricot – VY LT

⊗	3778	Terra Cotta – LT
X	3864	Mocha Beige – LT
*	3884	Pewter – MD LT

Back stitches:

	White	White
	03	Tin – MD
	310	Black
	469	Avocado Green
	722	Orange Spice – LT
	967	Apricot – VY LT
	3863	Mocha Beige – MD

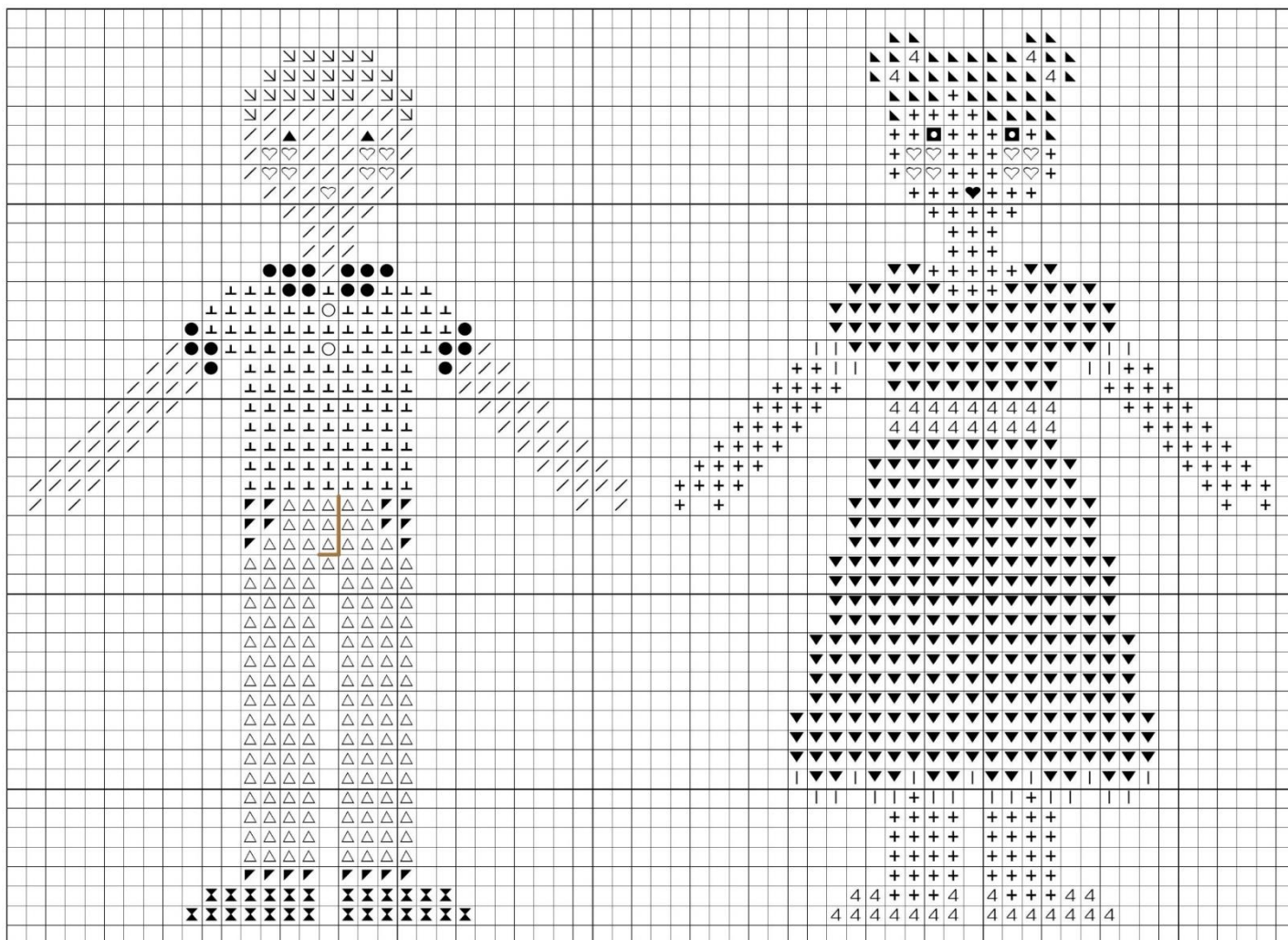


Full stitches:

- ♥ 321 Christmas Red
- * 517 Wedgewood – DK
- ◐ 519 Sky Blue
- # 701 Christmas Green – LT
- L 721 Orange Spice – MD
- ♡ 758 Terra Cotta – VY LT
- 2 892 Carnation – MD
- 938 Coffee Brown – UL DK
- ⊕ 950 Desert Sand – LT
- 3761 Sky Blue – LT
- ◇ 3822 Straw – LT
- ^ 3862 Mocha Beige – DK
- ▲ 3863 Mocha Beige – MD

Back stitches:

- White White
- 721 Orange Spice – MD
- 758 Terra Cotta – VY LT
- 892 Carnation – MD
- 3862 Mocha Beige – MD



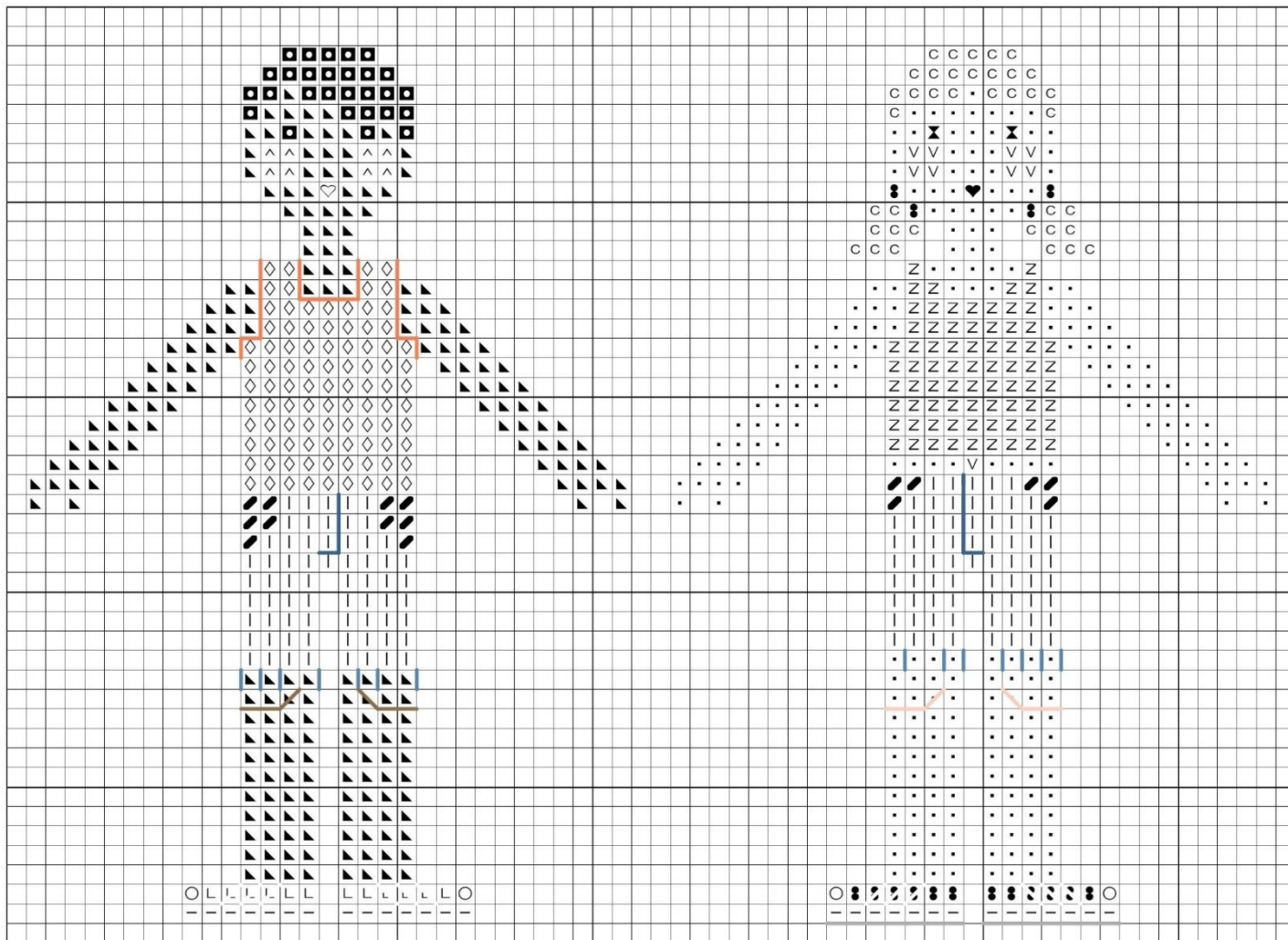
Full stitches:

⊥	311	Navy Blue – MD
♥	321	Christmas Red
▹	435	Brown – VY LT
△	437	Tan – LT
4	554	Violet – LT
♡	758	Terra Cotta – VY LT
⊗	801	Coffee Brown – DK
●	823	Navy Blue – DK
	826	Blue – MD
▼	828	Blue – UL LT
▲	839	Beige Brown – DK
■	938	Coffee Brown – UL DK
+	950	Desert Sand – LT

↘	3852	Straw – VY DK
/	3856	Mahogany – UL VY LT
▲	3863	Mocha Beige – MD

Back stitches:

—	435	Brown – VY LT
---	-----	---------------



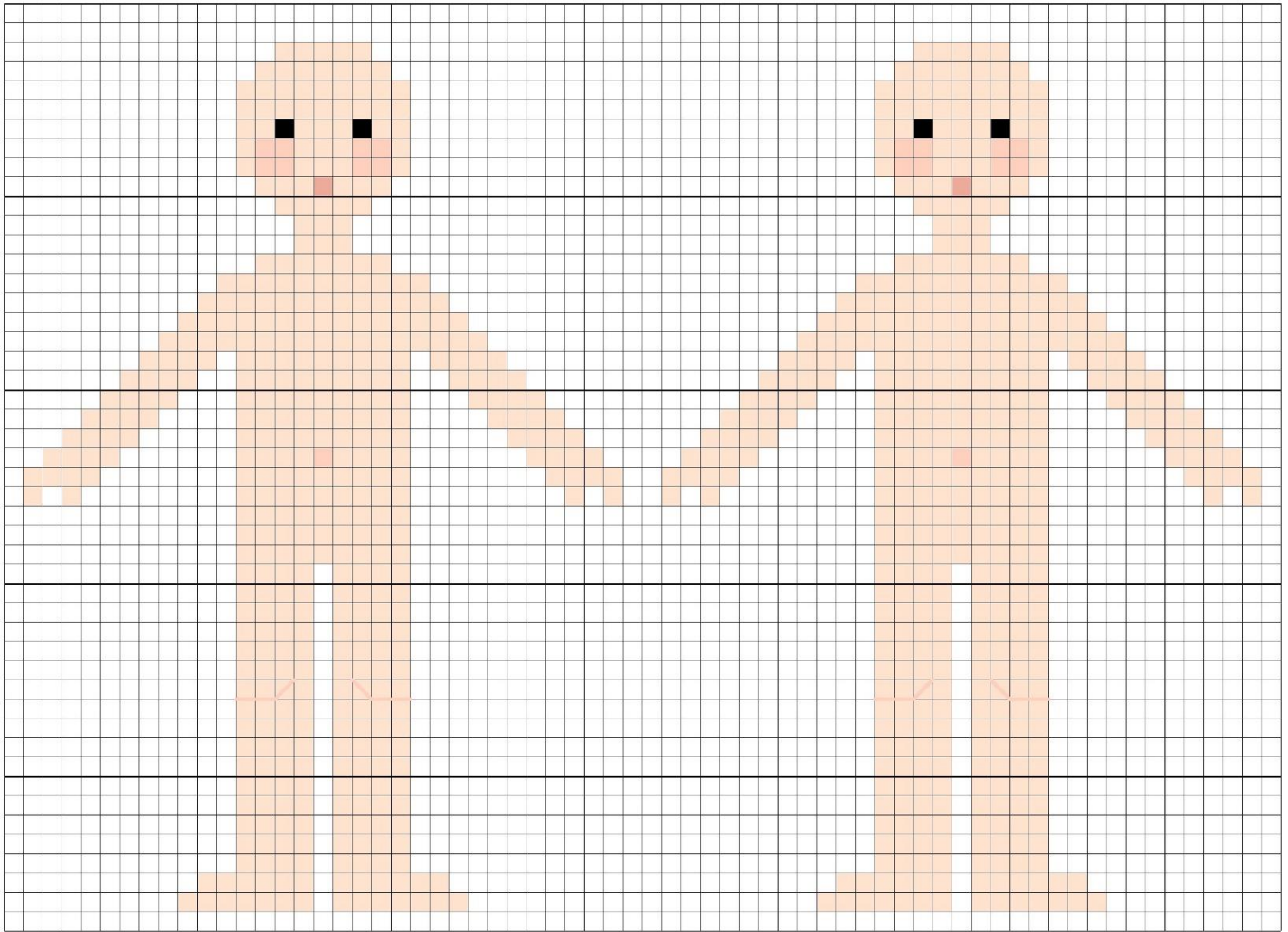
Full stitches:

○	White	White
—	02	Tin
Z	13	Nile Green – MD LT
♥	321	Christmas Red
L	721	Orange Spice – MD
♡	758	Terra Cotta – VY LT
⌘	801	Coffee Brown – DK
▮	825	Blue – DK
	826	Blue – MD
•	894	Carnation – VY LT
C	920	Copper – MD
◼	938	Coffee Brown – UL DK
▪	951	Tawny – LT

V	967	Apricot – VY LT
◇	3822	Straw – LT
^	3862	Mocha Beige – DK
▴	3863	Mocha Beige – MD

Back stitches:

	White	White
	04	Tin – DK
	721	Orange Spice – MD
	825	Blue – DK
	826	Blue – MD
	967	Apricot – VY LT
	3862	Mocha Beige – DK



Use these templates and colored pencils to design your own dolls. Choose a skin and hair color and show your style with an original outfit. Then start stitching!