

2016+ TOYOTA TACOMA V6 VTAILS CONVERSION INSTALLATION INSTRUCTIONS

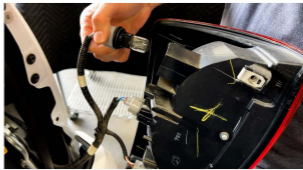
ESTIMATED TIME TO INSTALL: 20-30 MINUTES

TOOLS REQUIRED:

- 10MM SOCKET + RATCHET
- EXTRA ZIP TIES + WIRE CUTTERS IF NEEDED



1. Loosen top and bottom bolts holding the tail lights. The middle bolt does not need to be loosened. Pull the tail light straight back to remove from truck.



2. Remove all three bulb sockets from tail light by turning counter clockwise.



3. Disconnect all bulb holders from factory harness. These will not be used with the conversion so store in a safe location.



4. Connect brake splitter harness to the TRIANGLE shaped factory plug.



5. Connect other harness to both of the remaining plugs. The reverse light plug may be difficult to install if pins are bent. Inspect and straighten with flat head screwdriver if needed.



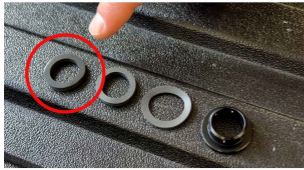
6. Install included gasket onto V6 red bulb. Repeat for other side.



7. Tighten screws in a vertical orientation (2 screws per bulb) using Allen wrench. Do not over tighten. Repeat for second bulb.



8. If using V6 Extreme red bulbs, spacer should be installed. Slide spacer onto bulb before gasket and screws.



9. Find hardware for V6 921 switchback bulb. Locate small firm gasket and discard metal collar and other gaskets.



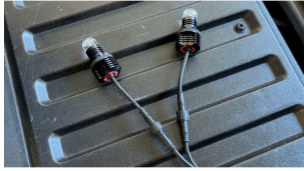
10. Install small firm gasket onto V6 921 switchback bulb.



11. Tighten screws in vertical orientation (2 screws per bulb) using Allen wrench. Do not over tighten.



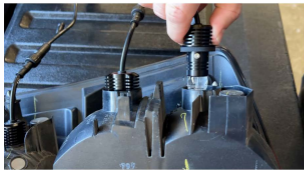
12. Connect V6 switchback bulb to the turn signal and reverse light harness. Tighten nut fully to maintain seal.



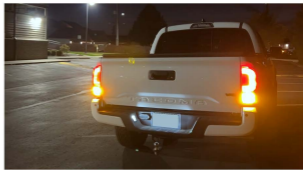
13. Connect both V6 red bulbs to the brake splitter harness. Tighten nut fully to maintain seal.



14. (OPTIONAL) To prevent hyperflashing in reverse, plug VLR-15 into 2 pin plug on harness. Clean metal surface and use included red tape to mount resistor as the tail light is reinstalled.



15. Push and twist V6 bulbs into tail light sockets. Tuck wiring out of the way and firmly push the tail light to snap into place. Tighten bolts. Repeat for other side.



16. INSTALL COMPLETE. Enjoy your new VTAILS V6 conversion!

Note: To prevent hyperflashing while in reverse, optional VLR-15 resistors can be purchased and plugged directly into the harness. Most trucks do not require resistors for all other conditions.