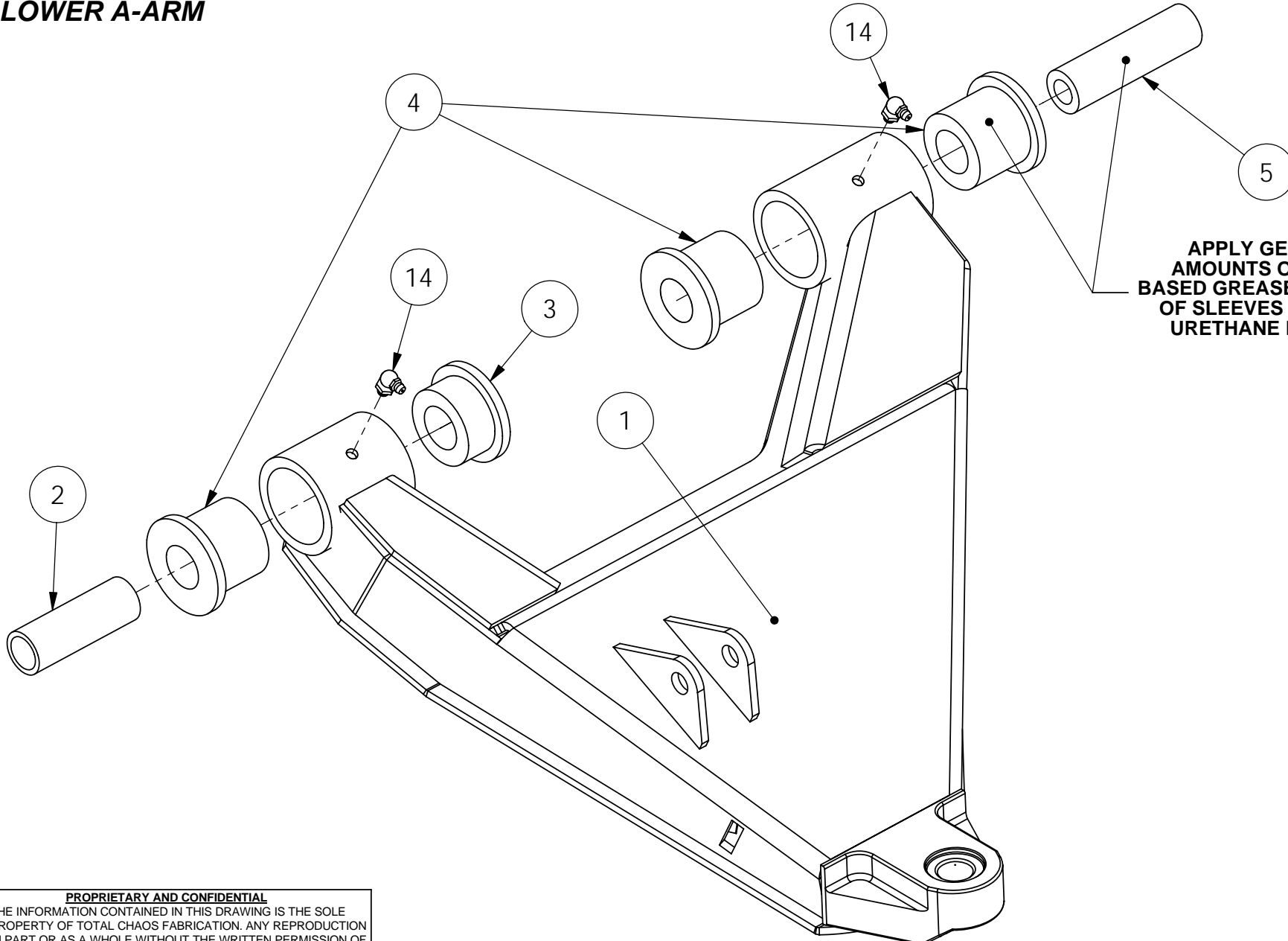


LOWER A-ARM

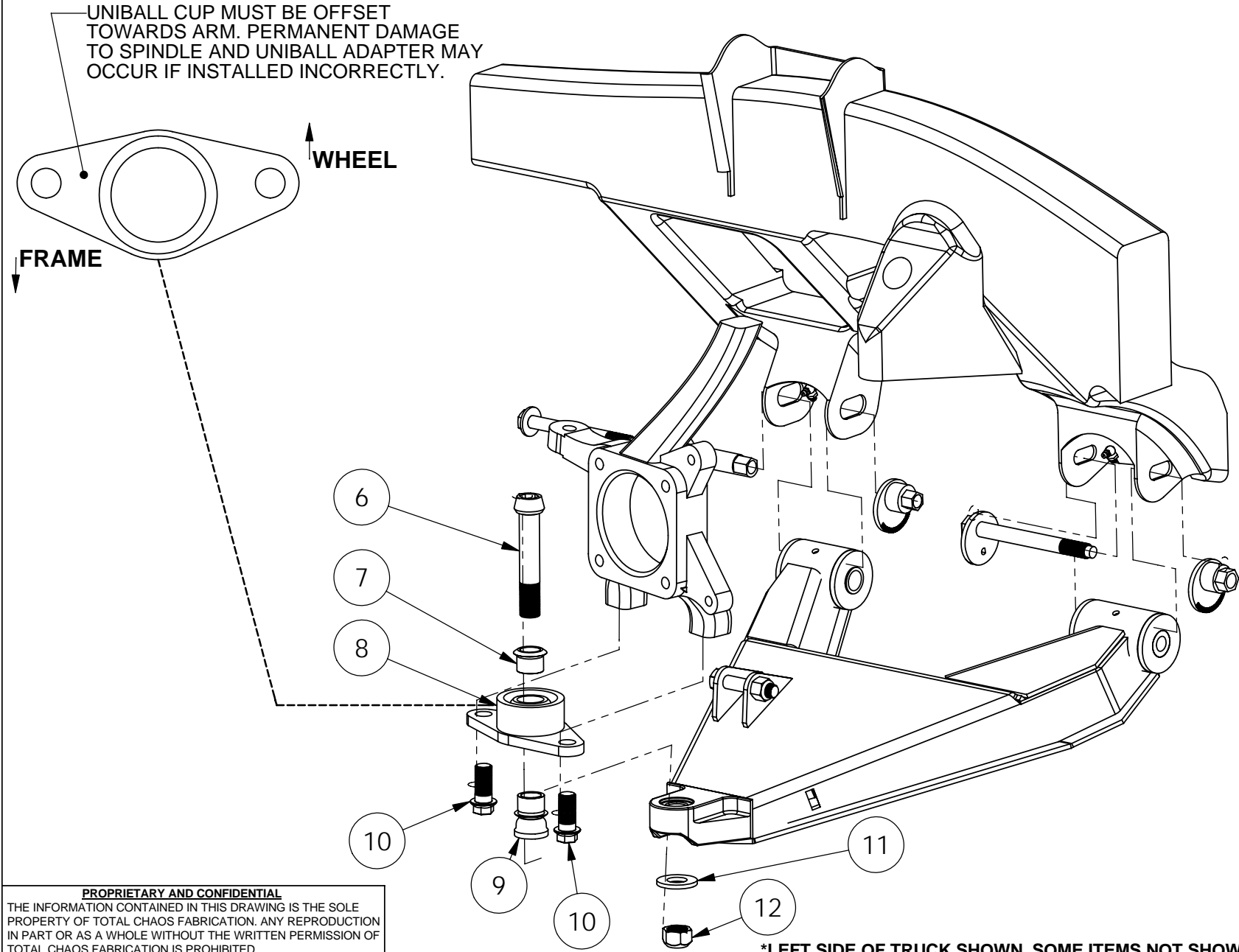


**APPLY GENEROUS
AMOUNTS OF TEFLON
BASED GREASE TO OUTSIDE
OF SLEEVES AND I.D. OF
URETHANE BUSHINGS**

PROPRIETARY AND CONFIDENTIAL
THE INFORMATION CONTAINED IN THIS DRAWING IS THE SOLE
PROPERTY OF TOTAL CHAOS FABRICATION. ANY REPRODUCTION
IN PART OR AS A WHOLE WITHOUT THE WRITTEN PERMISSION OF
TOTAL CHAOS FABRICATION IS PROHIBITED.

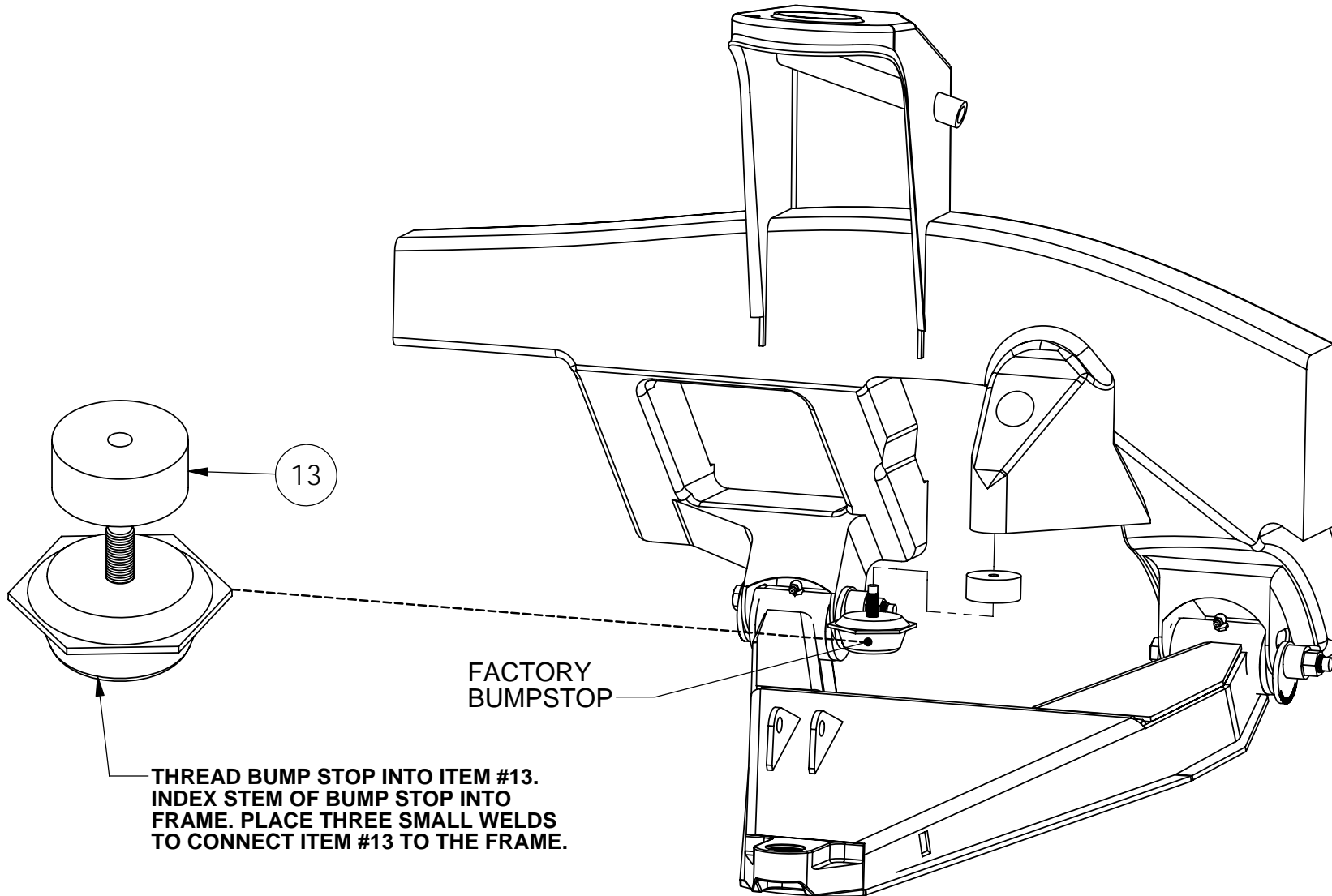
***LEFT SIDE OF TRUCK SHOWN. SOME ITEMS NOT SHOWN FOR CLARITY.**

UNIBALL CUP MUST BE OFFSET
TOWARDS ARM. PERMANENT DAMAGE
TO SPINDLE AND UNIBALL ADAPTER MAY
OCCUR IF INSTALLED INCORRECTLY.



PROPRIETARY AND CONFIDENTIAL
THE INFORMATION CONTAINED IN THIS DRAWING IS THE SOLE
PROPERTY OF TOTAL CHAOS FABRICATION. ANY REPRODUCTION
IN PART OR AS A WHOLE WITHOUT THE WRITTEN PERMISSION OF
TOTAL CHAOS FABRICATION IS PROHIBITED.

*LEFT SIDE OF TRUCK SHOWN. SOME ITEMS NOT SHOWN FOR CLARITY.



THREAD BUMP STOP INTO ITEM #13.
INDEX STEM OF BUMP STOP INTO
FRAME. PLACE THREE SMALL WELDS
TO CONNECT ITEM #13 TO THE FRAME.

PROPRIETARY AND CONFIDENTIAL
THE INFORMATION CONTAINED IN THIS DRAWING IS THE SOLE
PROPERTY OF TOTAL CHAOS FABRICATION. ANY REPRODUCTION
IN PART OR AS A WHOLE WITHOUT THE WRITTEN PERMISSION OF
TOTAL CHAOS FABRICATION IS PROHIBITED.

*LEFT SIDE OF TRUCK SHOWN. SOME ITEMS NOT SHOWN FOR CLARITY.

INSTALLATION NOTES

The factory manual is required for torque specifications on all hardware. This procedure will involve the removal and re-installation of many parts. Always use factory replacements for worn or damaged parts.

Some items are not shown for clarity.

Page 1

Apply generous amounts of teflon based grease to outside of sleeves and I.D. of urethane bushings. (Teflon based grease is available from Total Chaos. Part # - Superlube)

Torque the uniball nut (Item #12) to 125 ft/lbs.

Check and re-torque all lower control arm hardware after initial 500 miles and after every off road excursion.

PARTS LIST: 07+ FJ/05+ TACOMA STOCK LOWER CONTROL ARMS

ITEM #	PART #	QTY.	ITEM DESCRIPTION
1	86501L	1	CONTROL ARM, STOCK LOWER LEFT
	86501R	1	CONTROL ARM, STOCK LOWER RIGHT
2	69702	2	SLEEVE, LOWER ARM FRONT INNER
3	60684	2	BUSHING, URETHANE SHORT HALF
4	60292	6	BUSHING, URETHANE LONG HALF
5	68603	2	SLEEVE, LOWER ARM REAR INNER
6	10342	2	BOLT, 3/4" x 4.25L SOCKET HEAD
7	10034C	2	SPACER, TOP LOWER ARM MISALIGNMENT
8	68614	2	ADAPTER, LOWER UNIBALL 2-BOLT FLANGE
9	10034T	2	SPACER, BOTTOM LOWER ARM MISALIGNMENT
10	10616	4	BOLT, 16MM X 45MM FLANGE HEAD
11	12304	2	WASHER, 3/4" SAE
12	11302	2	NUT, 3/4" GRADE C LOCK
13	68610	2	THREADED SPACER, BUMPSTOP
14	10005	4	FITTING, GREASE (ZERK)

TOTAL CHAOS Fabrication Inc.
159 North Maple St. Unit J
Corona, CA 92880
951.737.9682

WWW.CHAOSFAB.COM

PROPRIETARY AND CONFIDENTIAL

THE INFORMATION CONTAINED IN THIS DRAWING IS THE SOLE PROPERTY OF TOTAL CHAOS FABRICATION. ANY REPRODUCTION IN PART OR AS A WHOLE WITHOUT THE WRITTEN PERMISSION OF TOTAL CHAOS FABRICATION IS PROHIBITED.

*LEFT SIDE OF TRUCK SHOWN. SOME ITEMS NOT SHOWN FOR CLARITY.