

NPT VALVE STEM INSTALLATION

1. SCOPE

1.1. This document covers proper installation technique of valve stems in high offset (46mm offset) MR401-R, MR201, MR202, MR103 wheels. This is applicable to all bolt patterns.

2. BACKGROUND

2.1. These wheels use a NPT valve stem instead of a traditional pull through rubber valve stem. Due to the nature of NPT threads this standard has been created to ensure proper installation and leak-free operation.

3. PROCEDURE

3.1. The tire should be installed before the valve stem to prevent any damage to the valve stem during tire installation.

3.2. Locate the valve stem in the hardware kit box. Use Teflon tape or a similar pipe thread sealant and apply 2-3 wraps to the threads of the valve stem.

3.2.1. A small amount of red Loctite should also be used on the threads to prevent loosening over time. Loctite 565 can be used to prevent both leaking and loosening.

3.3. Thread the fitting in by hand until snug.

3.4. Use a wrench to tighten the fitting 2-3 turns from the snug position. A torque value of 5 ft-lbs is recommended for proper installation.

3.4.1. Use caution as over-tightening of the valve stem can cause leaking.

3.4.2. DO NOT thread the valve stem to the point where the flange bottoms out. A properly installed valve will have some threads still exposed even when tightened 2-3 turns from snug.

3.4.3. If during installation the valve stem threads all the way to the flange with out becoming snug then the female threads of the wheel are defective. The wheel should be returned for a replacement.

4. APPENDIX

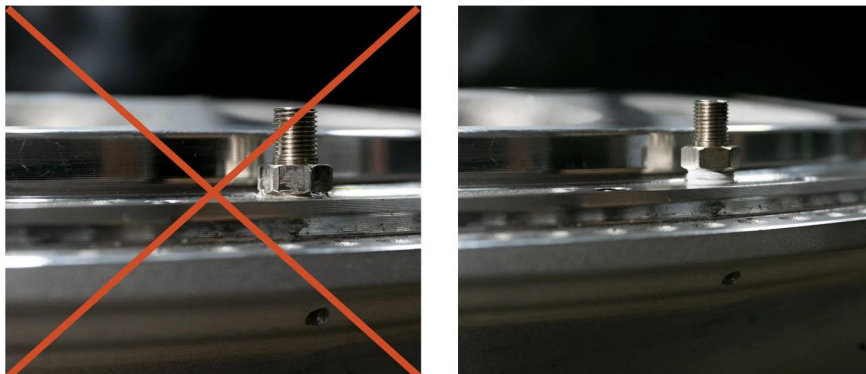


Figure 1: Valve on left has been threaded to the hex flange which is incorrect and may cause leaking. Valve on the right has been properly installed.

For more info: 866-779-8604

METHOD[®]
RACE WHEELS