



## 2024+ Toyota Tacoma 2.5 Front Coilover

King Shocks 12472 Edison Way Garden Grove, CA 92841  
714-530-8701 [www.kingshocks.com](http://www.kingshocks.com)

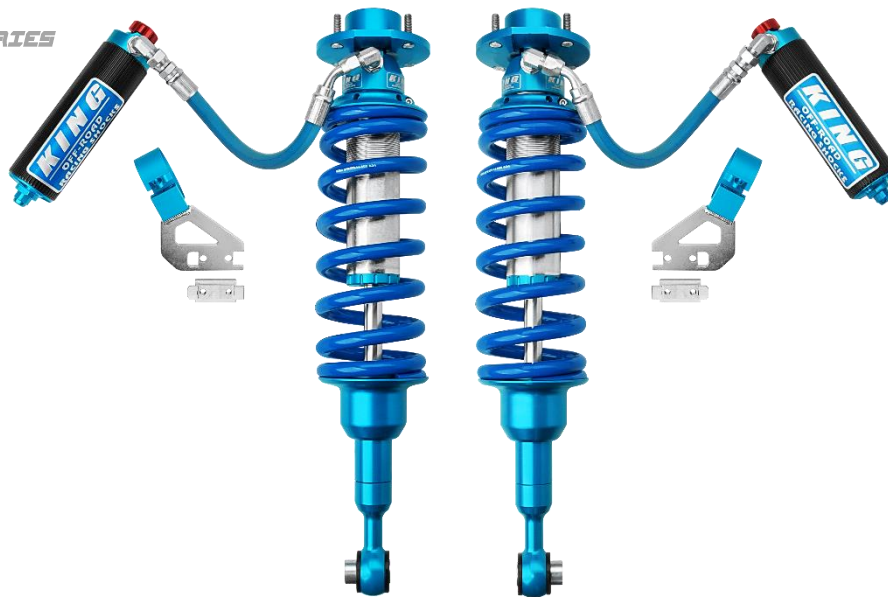
**Front Parts List:**

- 2 – Tacoma 2.5 Front Coilovers (25001-408)
- 2 – Reservoir Brackets (25048-083/084)
- 2 – Backing plates (25049-040)
- 1 – Hardware Kit (KH02-187)

**Tools Required:**

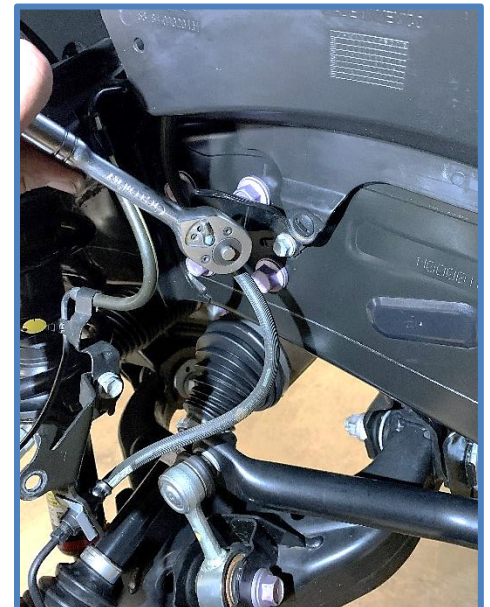
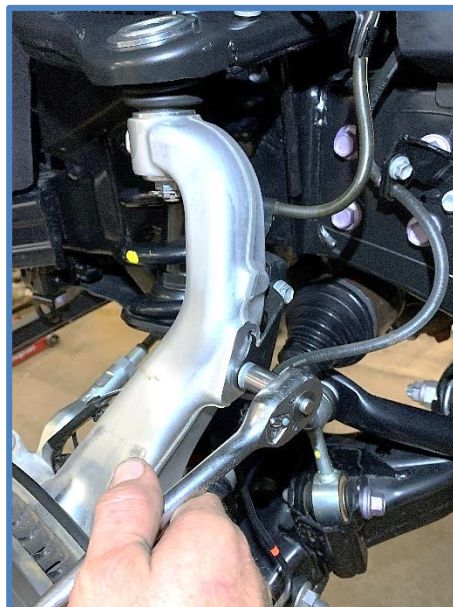
- Floor Jack/Jack Stands
- Metric Wrench/Socket Set
- Standard Wrench/Socket Set

**Toyota Tacoma**  
OEM PERFORMANCE SERIES



**FRONT:** With the vehicle on level ground, set the emergency brake and block the rear tires. Using a floor jack, raise the front end and support the frame rails with jack stands for safety. Remove front tires. **NOTE: Never work under an unsupported vehicle.**

1. Start removing factory shocks by first unbolting the ABS line bracket from the upper A-arm using a 12mm wrench or socket. You will also need to unbolt the brake lines from the knuckle and frame (12mm wrench/socket) Be very careful not to damage brake or ABS lines as you are removing and installing shocks.



**IMPORTANT:** Read all instructions thoroughly from start to finish before beginning the install. Check parts list and make sure all parts are included in the kit. If the instructions are not properly followed severe frame, driveline and/or suspension damage may result. Check for frame and suspension damage prior to installation.

This kit does not require welding. Do not weld on any component. Welding may void the warranty and/or cause the product to fail. If any parts are missing, or for tech assistance; Contact King Off Road Racing Shocks: 714-530-8701 Most important after the install, Feel the difference and have fun.



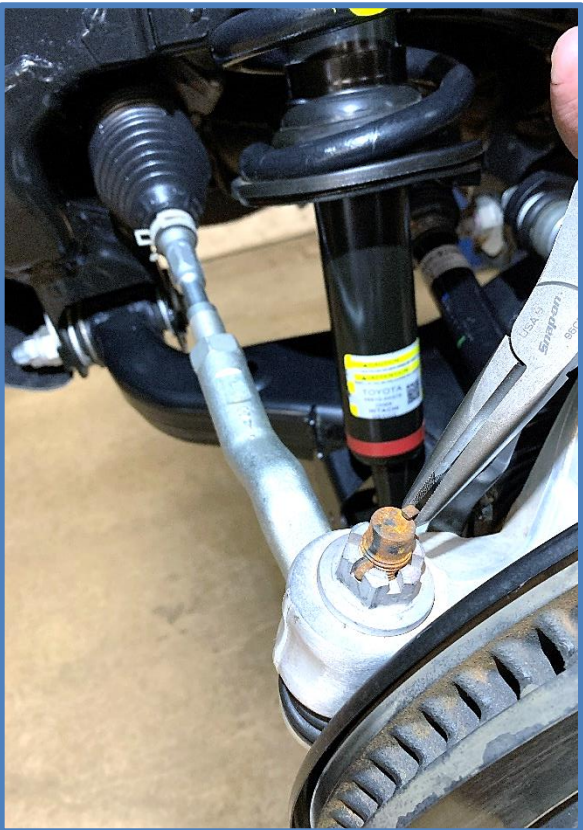
## 2024+ Toyota Tacoma 2.5 Front Coilover

King Shocks 12472 Edison Way Garden Grove, CA 92841  
714-530-8701 [www.kingshocks.com](http://www.kingshocks.com)

2. Remove pin from upper ball joint, loosen nut with a 19mm socket. Separate upper A-arm from spindle.



3. Remove cotter pin from the tie rod, Remove nut with a 24mm socket. Separate tie rod from spindle.



**IMPORTANT:** Read all instructions thoroughly from start to finish before beginning the install. Check parts list and make sure all parts are included in the kit. If the instructions are not properly followed severe frame, driveline and/or suspension damage may result. Check for frame and suspension damage prior to installation.

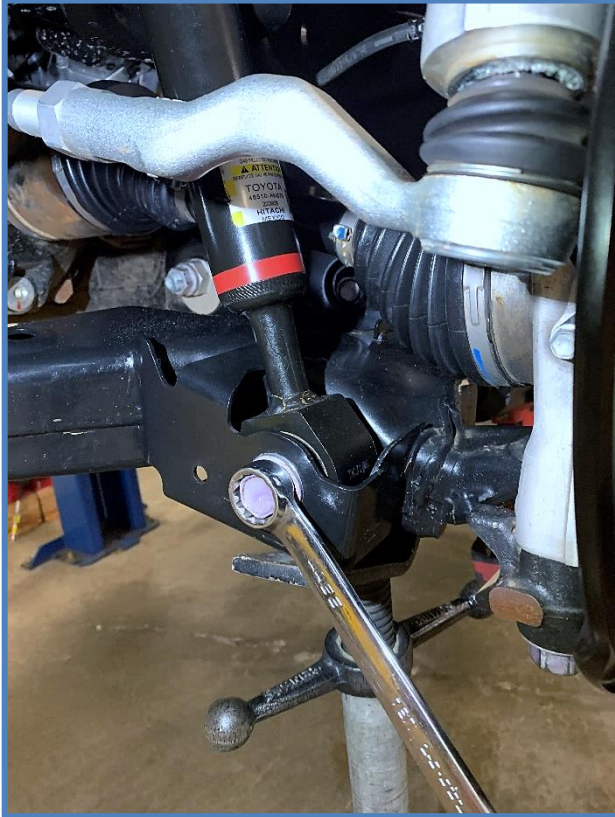
This kit does not require welding. Do not weld on any component. Welding may void the warranty and/or cause the product to fail. If any parts are missing, or for tech assistance; Contact King Off Road Racing Shocks: 714-530-8701 Most important after the install, Feel the difference and have fun.



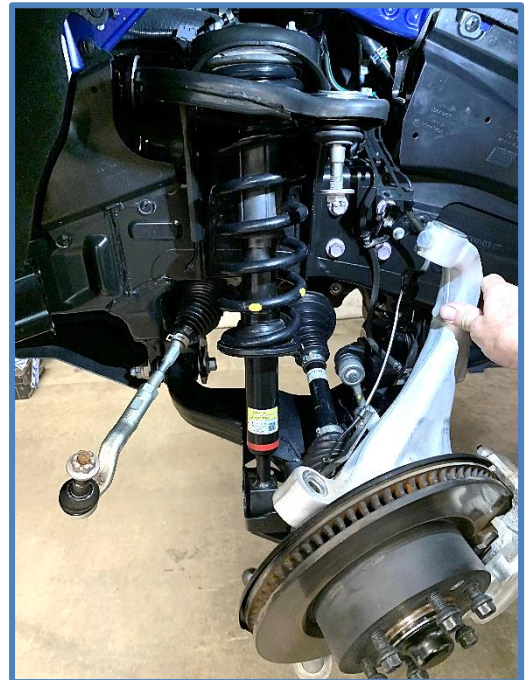
## 2024+ Toyota Tacoma 2.5 Front Coilover

King Shocks 12472 Edison Way Garden Grove, CA 92841  
714-530-8701 [www.kingshocks.com](http://www.kingshocks.com)

4. Remove lower shock mounting bolt using a 22mm wrench and socket.



5. Remove upper mounting nuts using a 14mm wrench or socket, then remove shocks from vehicle.



**IMPORTANT:** Read all instructions thoroughly from start to finish before beginning the install. Check parts list and make sure all parts are included in the kit. If the instructions are not properly followed severe frame, driveline and/or suspension damage may result. Check for frame and suspension damage prior to installation.

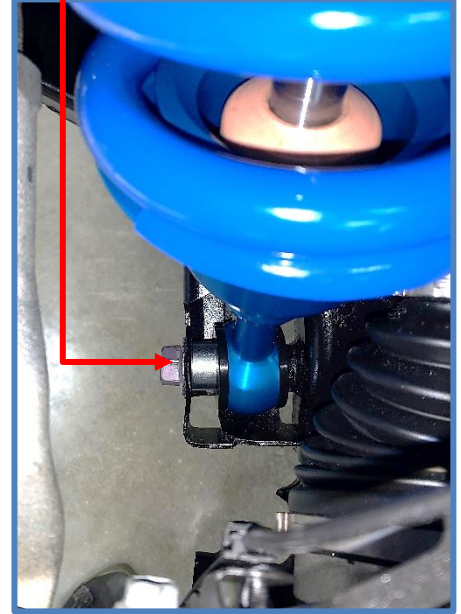
This kit does not require welding. Do not weld on any component. Welding may void the warranty and/or cause the product to fail. If any parts are missing, or for tech assistance; Contact King Off Road Racing Shocks: 714-530-8701 Most important after the install, Feel the difference and have fun.



## 2024+ Toyota Tacoma 2.5 Front Coilover

King Shocks 12472 Edison Way Garden Grove, CA 92841  
714-530-8701 [www.kingshocks.com](http://www.kingshocks.com)

6. **Install King Shocks** – Be aware shocks are side specific. Hose and reservoir will go towards front of vehicle. See final install pictures for proper orientation. Place shock in position on the vehicle by first maneuvering top of shock into upper mount. Then pry down on lower control arm and place rod end in the lower mount. The spacers in the rod end are offset, make sure the longer spacer is towards the front of the vehicle.



7. Place the supplied 3/8 HD Washers (CW1701) on the mounting studs followed by the 3/8 nuts (CN2711) and tighten nuts to 35ft/lbs.



**IMPORTANT:** Read all instructions thoroughly from start to finish before beginning the install. Check parts list and make sure all parts are included in the kit. If the instructions are not properly followed severe frame, driveline and/or suspension damage may result. Check for frame and suspension damage prior to installation.

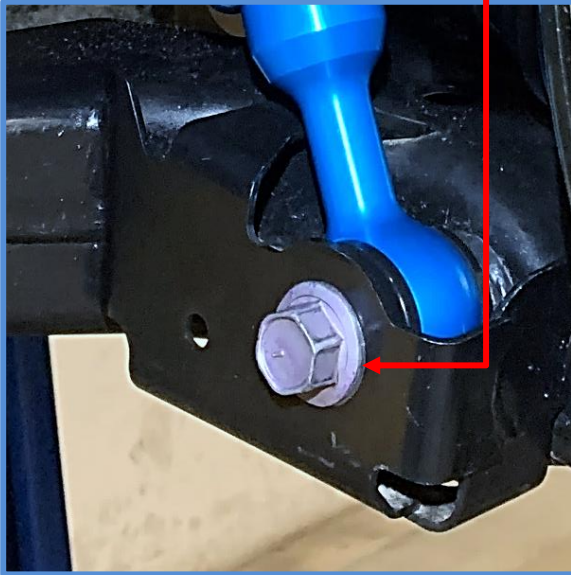
This kit does not require welding. Do not weld on any component. Welding may void the warranty and/or cause the product to fail. If any parts are missing, or for tech assistance; Contact King Off Road Racing Shocks: 714-530-8701 Most important after the install, Feel the difference and have fun.



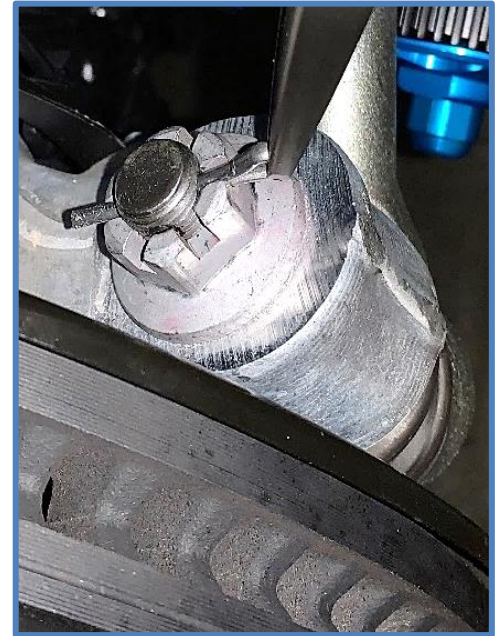
## 2024+ Toyota Tacoma 2.5 Front Coilover

King Shocks 12472 Edison Way Garden Grove, CA 92841  
714-530-8701 [www.kingshocks.com](http://www.kingshocks.com)

8. Insert the factory lower mounting bolt through the lower mount. Install the washer and nut, then tighten to factory specs.



9. Reconnect tie rod first then connect upper control arm. Connect tie rod, install nut, tighten to factory specs and reinstall the cotter pin.



**IMPORTANT:** Read all instructions thoroughly from start to finish before beginning the install. Check parts list and make sure all parts are included in the kit. If the instructions are not properly followed severe frame, driveline and/or suspension damage may result. Check for frame and suspension damage prior to installation.

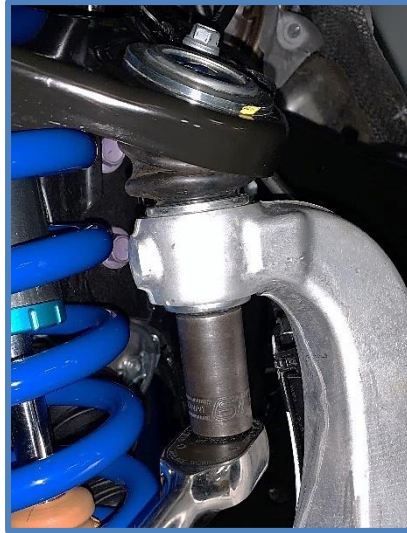
This kit does not require welding. Do not weld on any component. Welding may void the warranty and/or cause the product to fail. If any parts are missing, or for tech assistance; Contact King Off Road Racing Shocks: 714-530-8701 Most important after the install, Feel the difference and have fun.



## 2024+ Toyota Tacoma 2.5 Front Coilover

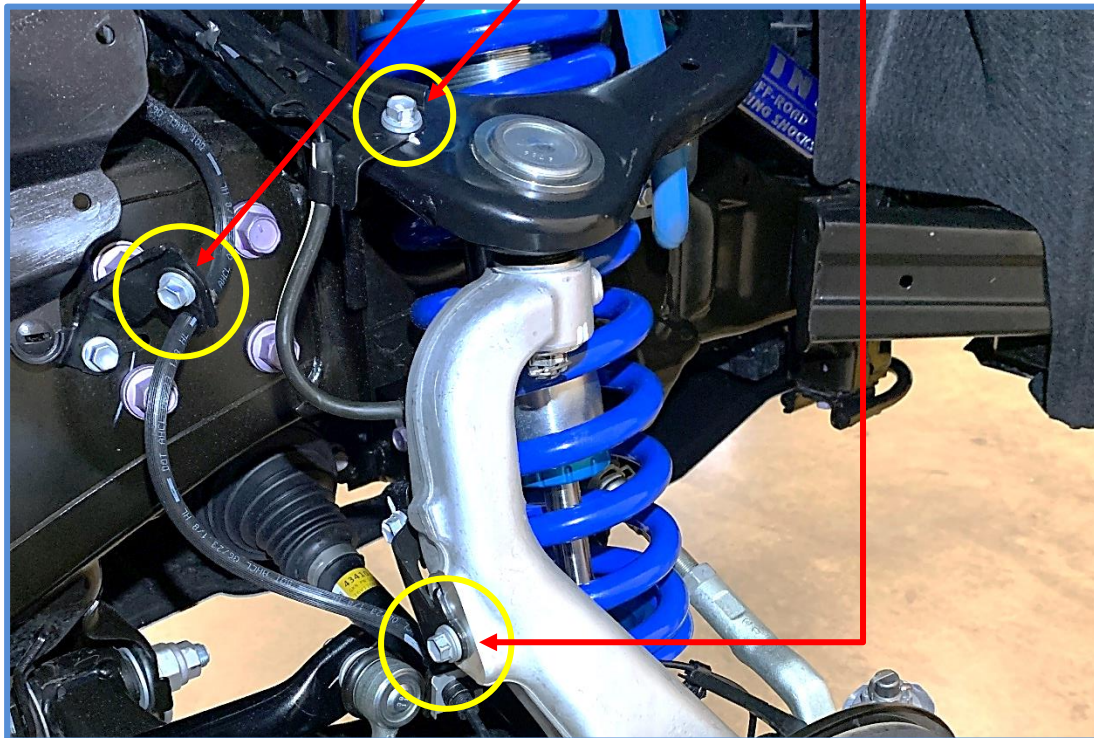
King Shocks 12472 Edison Way Garden Grove, CA 92841  
714-530-8701 [www.kingshocks.com](http://www.kingshocks.com)

10. Connect upper control arm after connecting tie rod. Tighten nut to factory specs. Reinstall the Pin.



**If you have aftermarket Upper Control Arms** – Attach aftermarket upper control arms following the instructions that came with your control arm kit.

11. Reconnect the brake and ABS lines to the frame, upper control arm and knuckle. Tighten bolts to factory specs using a 12mm socket.



**If you have aftermarket Upper Control Arms** – Attach ABS and/or brake lines following the instructions that came with your control arm kit.

**IMPORTANT:** Read all instructions thoroughly from start to finish before beginning the install. Check parts list and make sure all parts are included in the kit. If the instructions are not properly followed severe frame, driveline and/or suspension damage may result. Check for frame and suspension damage prior to installation.

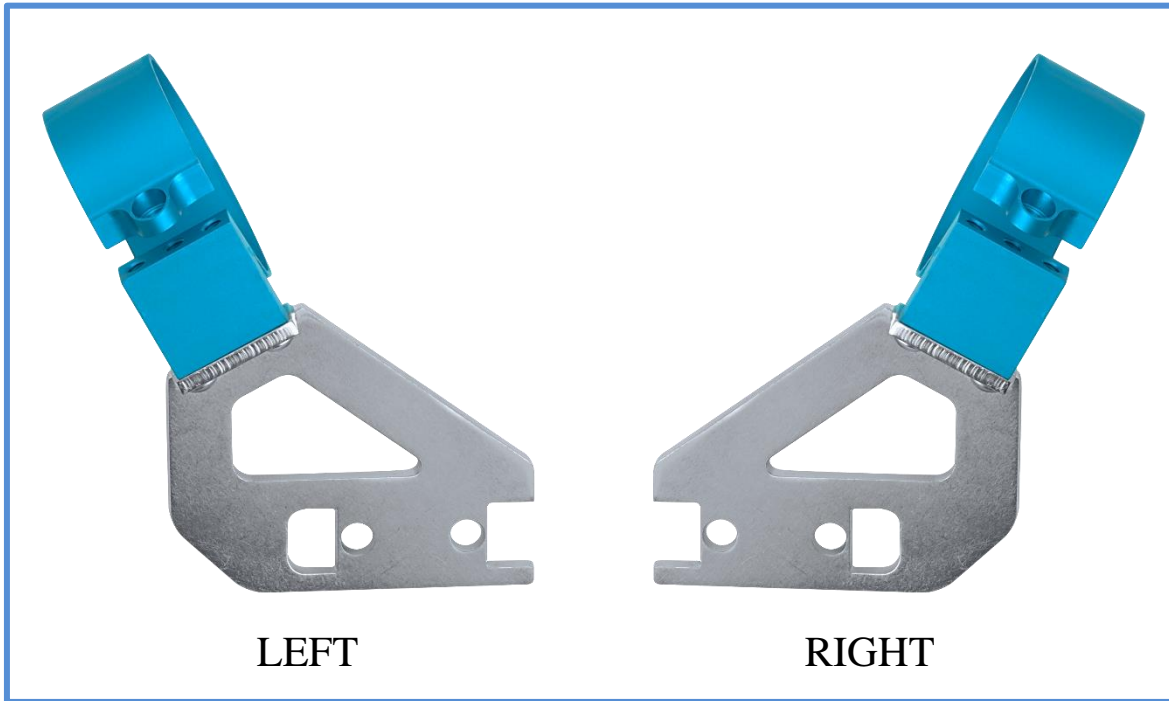
This kit does not require welding. Do not weld on any component. Welding may void the warranty and/or cause the product to fail. If any parts are missing, or for tech assistance; Contact King Off Road Racing Shocks: 714-530-8701 Most important after the install, Feel the difference and have fun.



## 2024+ Toyota Tacoma 2.5 Front Coilover

King Shocks 12472 Edison Way Garden Grove, CA 92841  
714-530-8701 [www.kingshocks.com](http://www.kingshocks.com)

12. **Mount Reservoirs** – First attach reservoir clamps to the reservoir brackets using the supplied 1/4 x 1/2" BHCS (CB2420). Apply red locktite to the threads and attach clamps to brackets as shown below.



LEFT

RIGHT



Photos show right side.

**IMPORTANT:** Read all instructions thoroughly from start to finish before beginning the install. Check parts list and make sure all parts are included in the kit. If the instructions are not properly followed severe frame, driveline and/or suspension damage may result. Check for frame and suspension damage prior to installation.

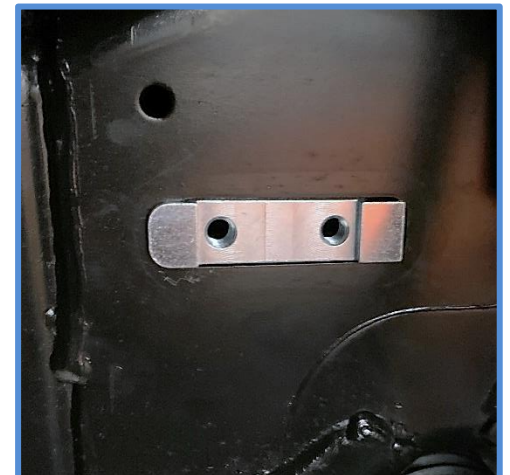
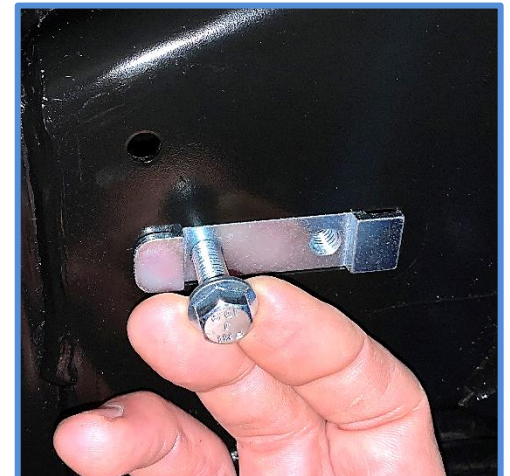
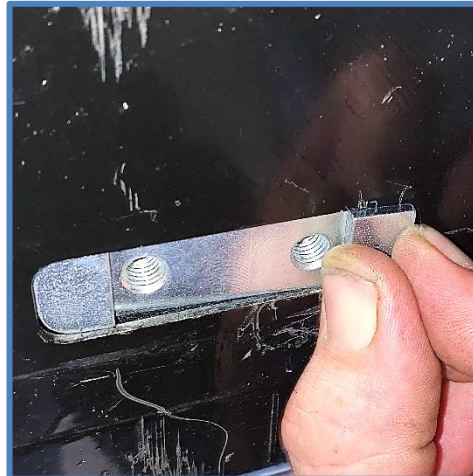
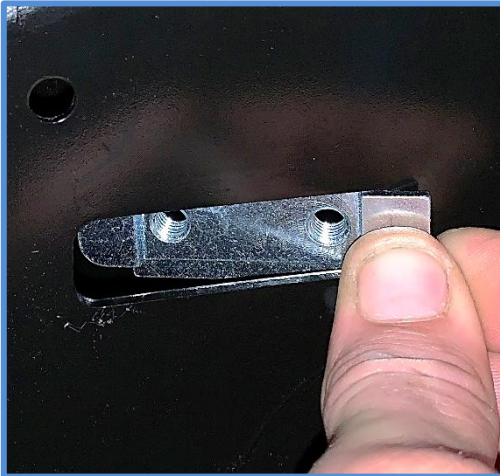
This kit does not require welding. Do not weld on any component. Welding may void the warranty and/or cause the product to fail. If any parts are missing, or for tech assistance; Contact King Off Road Racing Shocks: 714-530-8701 Most important after the install, Feel the difference and have fun.



## 2024+ Toyota Tacoma 2.5 Front Coilover

King Shocks 12472 Edison Way Garden Grove, CA 92841  
714-530-8701 [www.kingshocks.com](http://www.kingshocks.com)

13. Insert the Backing Plate (25049-040) into the rectangular hole in frame with the rounded corners facing towards the front of vehicle. Flip the plate out with thumb as shown below and slide forward to hold in place. *(Tip: Thread one of the provided 8mm bolts into the plate to help maneuver plate into position)*



**IMPORTANT:** Read all instructions thoroughly from start to finish before beginning the install. Check parts list and make sure all parts are included in the kit. If the instructions are not properly followed severe frame, driveline and/or suspension damage may result. Check for frame and suspension damage prior to installation.

This kit does not require welding. Do not weld on any component. Welding may void the warranty and/or cause the product to fail. If any parts are missing, or for tech assistance; Contact King Off Road Racing Shocks: 714-530-8701 Most important after the install, Feel the difference and have fun.

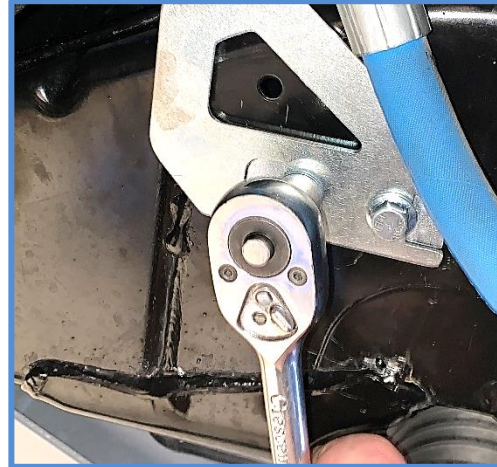
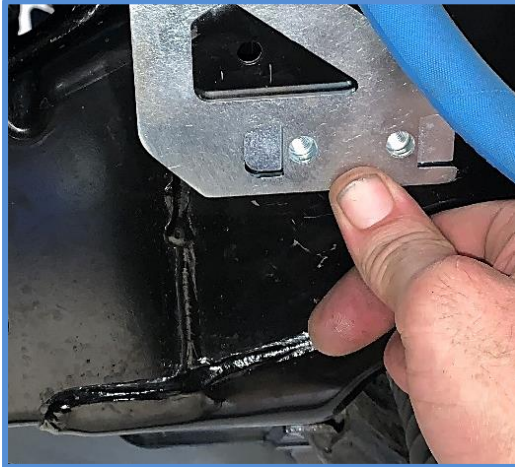




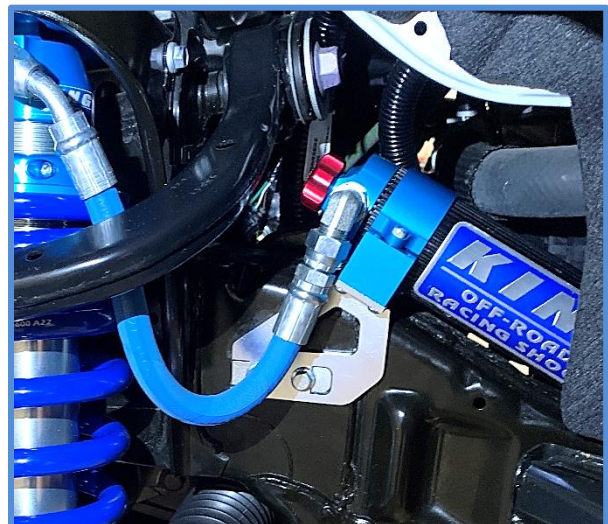
## 2024+ Toyota Tacoma 2.5 Front Coilover

King Shocks 12472 Edison Way Garden Grove, CA 92841  
714-530-8701 [www.kingshocks.com](http://www.kingshocks.com)

14. Slide the reservoir into the clamp, then place the reservoir bracket over the backing plate and thread two of the 8mm x 25mm flanged bolts (CB3825) into the backing plate. Tighten bolts using a 12mm socket.



15. Install the 1/4 x 1" SHCS (CB1501) in the reservoir clamp. Adjust reservoir/hose, check clearances and tighten bolt using a 3/16 Hex Key.



**IMPORTANT:** Read all instructions thoroughly from start to finish before beginning the install. Check parts list and make sure all parts are included in the kit. If the instructions are not properly followed severe frame, driveline and/or suspension damage may result. Check for frame and suspension damage prior to installation.

This kit does not require welding. Do not weld on any component. Welding may void the warranty and/or cause the product to fail. If any parts are missing, or for tech assistance; Contact King Off Road Racing Shocks: 714-530-8701 Most important after the install, Feel the difference and have fun.



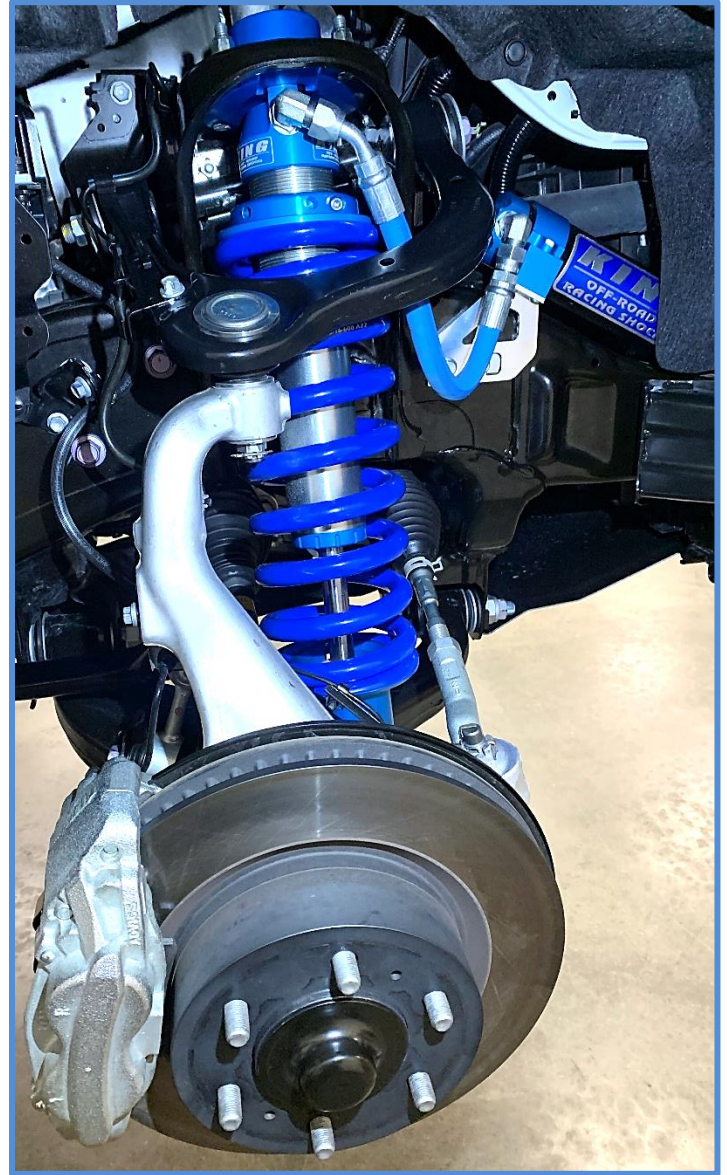
## 2024+ Toyota Tacoma 2.5 Front Coilover

King Shocks 12472 Edison Way Garden Grove, CA 92841  
714-530-8701 [www.kingshocks.com](http://www.kingshocks.com)

**LEFT**



**RIGHT**



### **DOUBLE CHECK ALL HARDWARE:**

Make sure everything is installed correctly and all hardware is tight. Recheck all hardware and lug nuts after 100 miles and periodically after that as part of routine maintenance.

### **Alignment is critical:**

A professional alignment must be performed before driving this vehicle at highway speeds. Do not attempt to drive your vehicle after this install without having the alignment readjusted to factory specs!

**IMPORTANT:** Read all instructions thoroughly from start to finish before beginning the install. Check parts list and make sure all parts are included in the kit. If the instructions are not properly followed severe frame, driveline and/or suspension damage may result. Check for frame and suspension damage prior to installation.

This kit does not require welding. Do not weld on any component. Welding may void the warranty and/or cause the product to fail. If any parts are missing, or for tech assistance; Contact King Off Road Racing Shocks: 714-530-8701 Most important after the install, Feel the difference and have fun.



## 2024+ Toyota Tacoma 2.5 Rear Shocks

King Shocks 12472 Edison Way Garden Grove, CA 92841  
714-530-8701 [www.kingshocks.com](http://www.kingshocks.com)

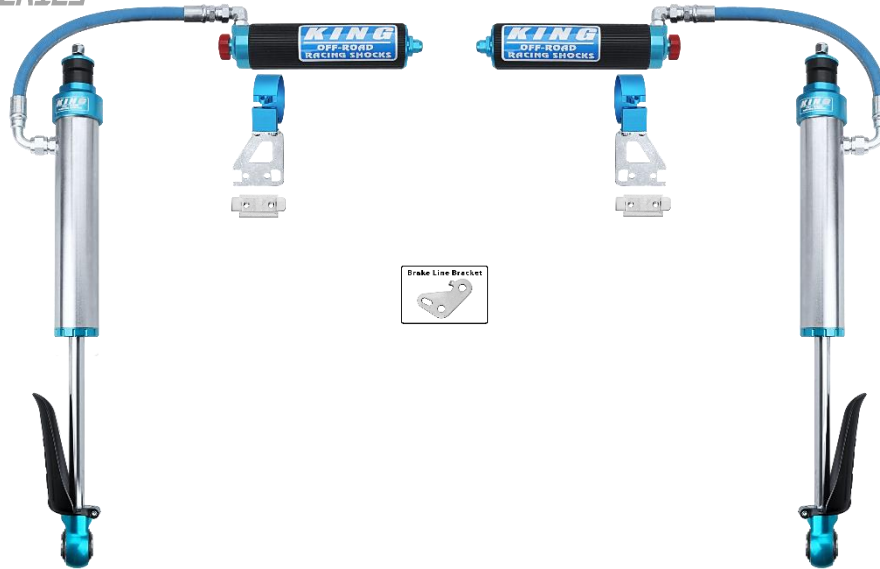
**Rear Parts List:**

- 2 – Tacoma 2.5 Rear Shocks (25001-409)
- 2 – Reservoir Brackets (25048-085L/086R)
- 2 – Backing Plates (25049-040)
- 1 – Brake Line Bracket (25071-004)
- 1 – Hardware Kit (KH02-190)

**Tools Required:**

- Floor Jack/Jack Stands
- Metric Wrench/Socket Set
- Standard Wrench/Socket Set

**Toyota Tacoma**  
OEM PERFORMANCE SERIES



**REAR:** With the vehicle on level ground, block the front tires. Using a floor jack, raise the rear end and support the frame rails with jack stands for safety. Remove tires. **NOTE: Never work under an unsupported vehicle.**

1. Support the axle with jack stands before removing shocks. Remove the lower mounting bolt using a 17mm socket.



**IMPORTANT:** Read all instructions thoroughly from start to finish before beginning the install. Check parts list and make sure all parts are included in the kit. If the instructions are not properly followed severe frame, driveline and/or suspension damage may result. Check for frame and suspension damage prior to installation.

This kit does not require welding. Do not weld on any component. Welding may void the warranty and/or cause the product to fail. If any parts are missing, or for tech assistance; Contact King Off Road Racing Shocks: 714-530-8701 Most important after the install, Feel the difference and have fun.



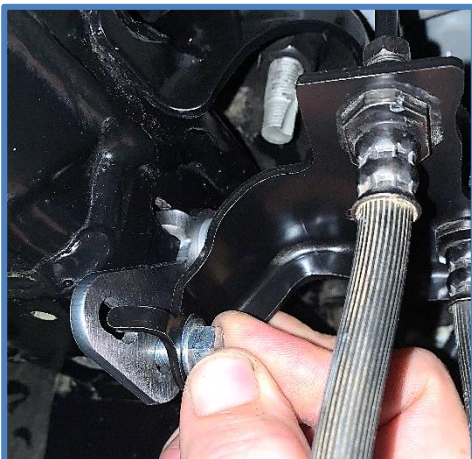
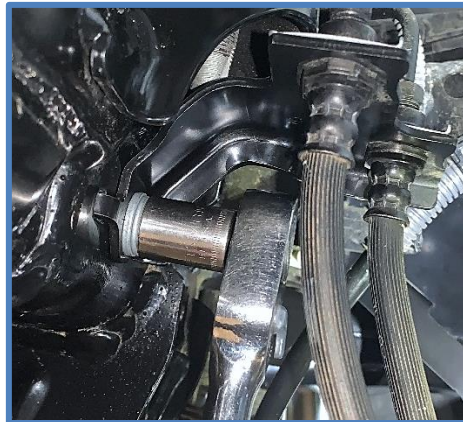
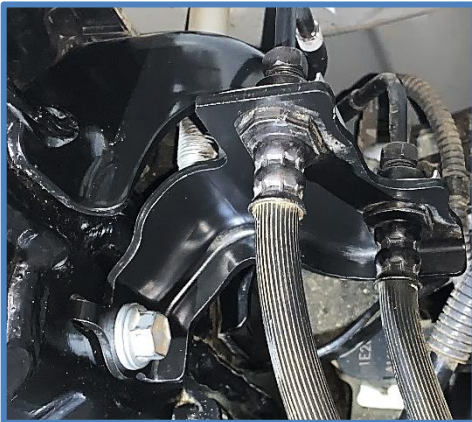
## 2024+ Toyota Tacoma 2.5 Rear Shocks

King Shocks 12472 Edison Way Garden Grove, CA 92841  
714-530-8701 [www.kingshocks.com](http://www.kingshocks.com)

2. Remove the upper mounting nut using a 22mm wrench. You may need to hold the stud with pliers or vise grips to loosen the nut. Remove shocks from vehicle.



3. **Install Brake Line Bracket** – Remove the bolt holding the factory brake line bracket using a 12mm socket. Attach the provided Brake Line Bracket to the factory location using the factory bolt, then attach the factory brake line bracket to the new bracket as shown below using the supplied 8mm bolt (CB3825) place the supplied washer and nut on the bolt and tighten.



**IMPORTANT:** Read all instructions thoroughly from start to finish before beginning the install. Check parts list and make sure all parts are included in the kit. If the instructions are not properly followed severe frame, driveline and/or suspension damage may result. Check for frame and suspension damage prior to installation.

This kit does not require welding. Do not weld on any component. Welding may void the warranty and/or cause the product to fail. If any parts are missing, or for tech assistance; Contact King Off Road Racing Shocks: 714-530-8701 Most important after the install, Feel the difference and have fun.



## 2024+ Toyota Tacoma 2.5 Rear Shocks

King Shocks 12472 Edison Way Garden Grove, CA 92841  
714-530-8701 [www.kingshocks.com](http://www.kingshocks.com)

4. **Install King Shocks** - Shocks are side specific, be sure you are installing shocks on the proper side. (See final install pictures for reference). Start by removing the nut, washer, anodized blue retainer and upper rubber bushing from the upper mounting stud. Make sure the taller bushing is on the bottom of the stud and insert the shock into the upper mount on the vehicle.



5. Place the upper bushing on the mounting stud followed by the blue retaining washer, 1/2" washer and nut. Apply anti-seize to the threads and thread the nut on finger tight for now to hold the shock in place.



**IMPORTANT:** Read all instructions thoroughly from start to finish before beginning the install. Check parts list and make sure all parts are included in the kit. If the instructions are not properly followed severe frame, driveline and/or suspension damage may result. Check for frame and suspension damage prior to installation.

This kit does not require welding. Do not weld on any component. Welding may void the warranty and/or cause the product to fail. If any parts are missing, or for tech assistance; Contact King Off Road Racing Shocks: 714-530-8701 Most important after the install, Feel the difference and have fun.



## 2024+ Toyota Tacoma 2.5 Rear Shocks

King Shocks 12472 Edison Way Garden Grove, CA 92841  
714-530-8701 [www.kingshocks.com](http://www.kingshocks.com)

6. Place the rod end on the lower mounting stud with shaft guard facing forward and install the factory bolt. Torque bolts to factory specs.



7. Tighten upper nut using a 3/4" wrench.



**Important Note:** The rubber bushings on your King shocks have raised center sections that should be facing each other when installed on vehicle. Taller bushing should be on bottom next to cylinder. The silver washer between the rubber bushings represents the material thickness of the upper shock mount. It's important to tighten the nut only until the rubber bushings start to compress. There should be approximately 1/8 – 3/16" of the mounting pin protruding above the nut.  
**\*Do not over-tighten the nut..**



**IMPORTANT:** Read all instructions thoroughly from start to finish before beginning the install. Check parts list and make sure all parts are included in the kit. If the instructions are not properly followed severe frame, driveline and/or suspension damage may result. Check for frame and suspension damage prior to installation.

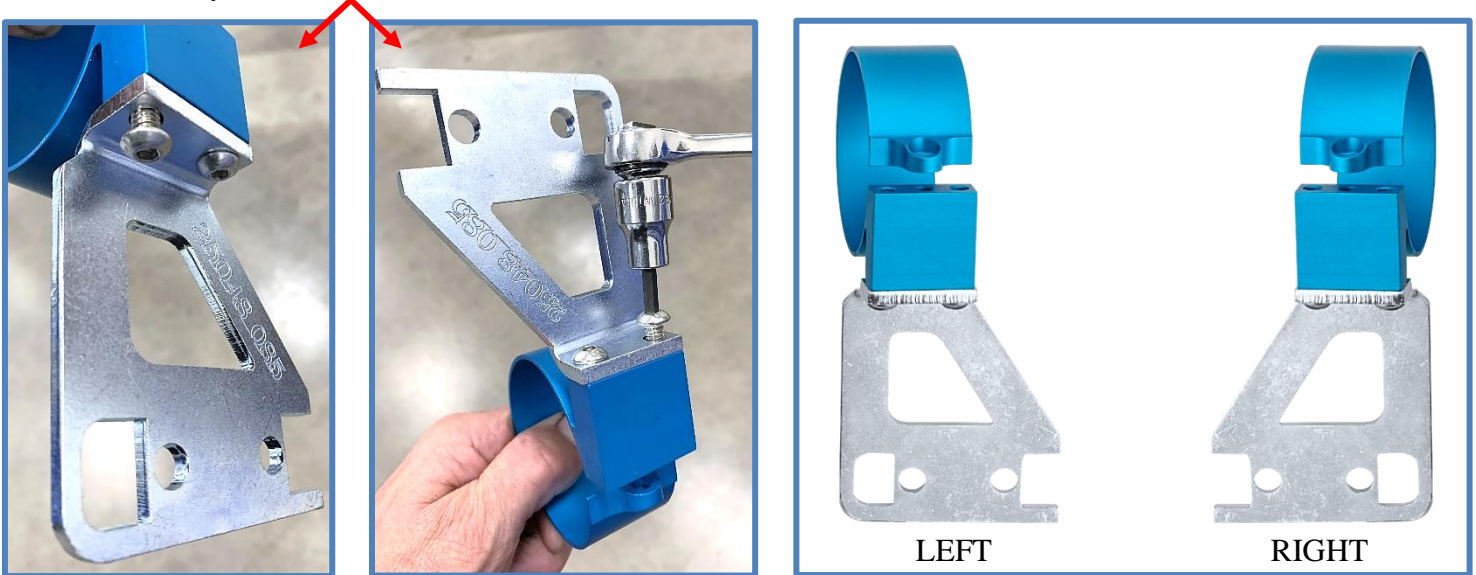
This kit does not require welding. Do not weld on any component. Welding may void the warranty and/or cause the product to fail. If any parts are missing, or for tech assistance; Contact King Off Road Racing Shocks: 714-530-8701 Most important after the install, Feel the difference and have fun.



## 2024+ Toyota Tacoma 2.5 Rear Shocks

King Shocks 12472 Edison Way Garden Grove, CA 92841  
714-530-8701 [www.kingshocks.com](http://www.kingshocks.com)

8. **Mount Reservoirs** – First attach reservoir clamps to the reservoir brackets using the supplied 1/4 x 1/2" BHCS (CB2420). Apply red locktite to the threads and attach clamps to brackets. Tighten screws using a 5/32 Hex Key. Photos below show the left bracket.



9. Remove the rectangular plastic cover (if applicable) from the hole in frame next to the bump stop mount.



**IMPORTANT:** Read all instructions thoroughly from start to finish before beginning the install. Check parts list and make sure all parts are included in the kit. If the instructions are not properly followed severe frame, driveline and/or suspension damage may result. Check for frame and suspension damage prior to installation.

This kit does not require welding. Do not weld on any component. Welding may void the warranty and/or cause the product to fail. If any parts are missing, or for tech assistance; Contact King Off Road Racing Shocks: 714-530-8701 Most important after the install, Feel the difference and have fun.



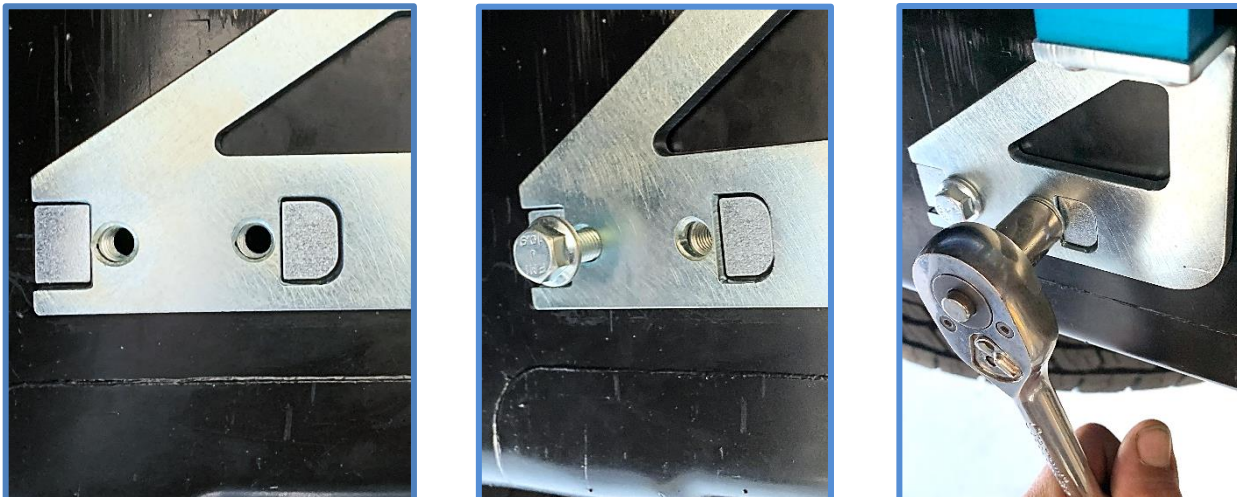
## 2024+ Toyota Tacoma 2.5 Rear Shocks

King Shocks 12472 Edison Way Garden Grove, CA 92841  
714-530-8701 [www.kingshocks.com](http://www.kingshocks.com)

10. Insert the Backing Plate (25049-040) into the rectangular hole in frame with the rounded corners facing towards the front of vehicle. Flip the plate out with thumb as shown below and slide forward to hold in place. *(Use a magnet or thread a bolt into plate to help pull backing plate out if you are having trouble.)*



11. Place the reservoir bracket over the backing plate and install the two 8mm bolts (CB3825) into the backing plate and tighten bolts using a 12mm wrench or socket. See final install pics for proper orientation.



**IMPORTANT:** Read all instructions thoroughly from start to finish before beginning the install. Check parts list and make sure all parts are included in the kit. If the instructions are not properly followed severe frame, driveline and/or suspension damage may result. Check for frame and suspension damage prior to installation.

This kit does not require welding. Do not weld on any component. Welding may void the warranty and/or cause the product to fail. If any parts are missing, or for tech assistance; Contact King Off Road Racing Shocks: 714-530-8701 Most important after the install, Feel the difference and have fun.





## 2024+ Toyota Tacoma 2.5 Rear Shocks

King Shocks 12472 Edison Way Garden Grove, CA 92841  
714-530-8701 [www.kingshocks.com](http://www.kingshocks.com)

12. Slide reservoir into the clamp and install the 1/4 x 1" SHCS (CB1501). Adjust reservoir to its final position and tighten bolt using a 3/16 Hex Key.



Final installation should look similar to photos below.



**DOUBLE CHECK ALL HARDWARE:**

Make sure everything is installed correctly and all hardware is tight before reinstalling tires. Install tires, remove jack stands and lower vehicle to the ground. Recheck all hardware and lug nuts after 100 miles and periodically after that as part of routine maintenance.

**IMPORTANT:** Read all instructions thoroughly from start to finish before beginning the install. Check parts list and make sure all parts are included in the kit. If the instructions are not properly followed severe frame, driveline and/or suspension damage may result. Check for frame and suspension damage prior to installation.

This kit does not require welding. Do not weld on any component. Welding may void the warranty and/or cause the product to fail. If any parts are missing, or for tech assistance; Contact King Off Road Racing Shocks: 714-530-8701 Most important after the install, Feel the difference and have fun.