

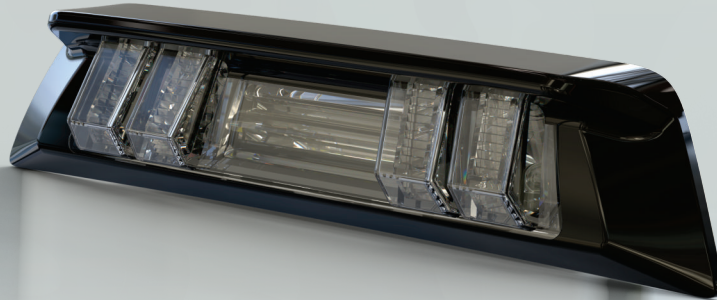


THE AUTOMOTIVE LIGHTING BENCHMARK

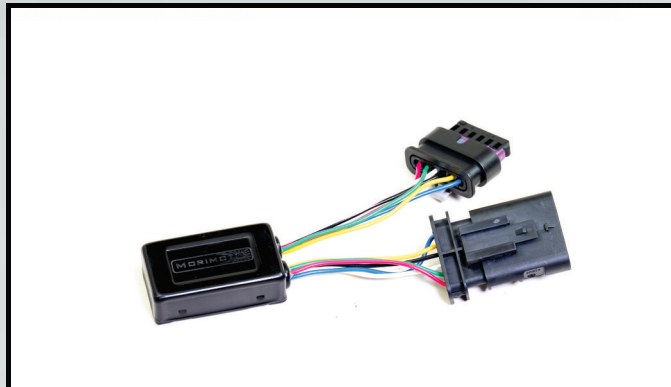
# 16-23 TOYOTA TACOMA X3B THIRD BRAKE LIGHT INSTALLATION GUIDE

**WARNING:** By reading this document, you agree it is only to be used as an educational guide. Morimoto Lighting nor its dealers make guarantees on any finished results, nor are they to be held responsible for any damage, misuse, or personal injuries. If you are unable to clearly understand and adapt the information below, professional installation is recommended.

## PACKAGE CONTENTS



1 X THIRD BRAKE LIGHT



OPTIONAL X3B01 RAPID FLASH MODULE

## TOOLS REQUIRED

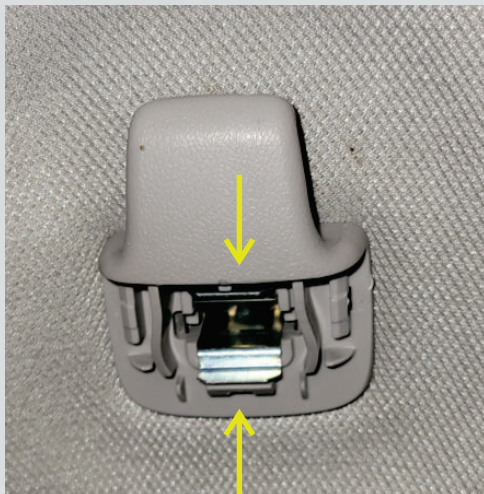
10MM SOCKET WITH WRENCH  
SMALL FLATHEAD SCREWDRIVER  
THIN TRIM PRY TOOL

# INSTALLATION PROCESS

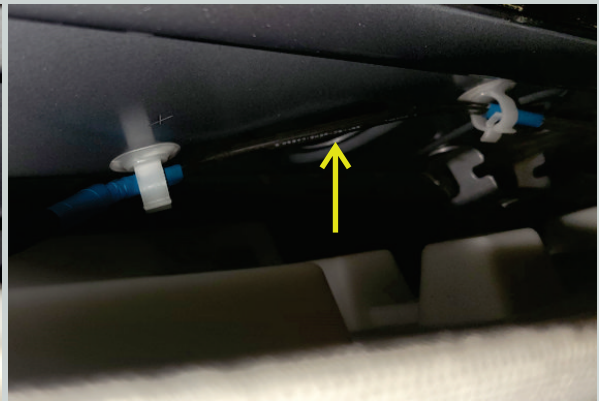
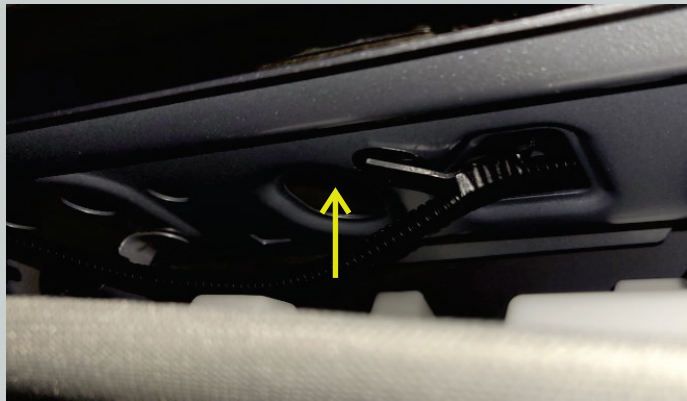
1. Inside the truck, locate the two hangers near the rear window. Using a thin pry tool, remove the access covers.



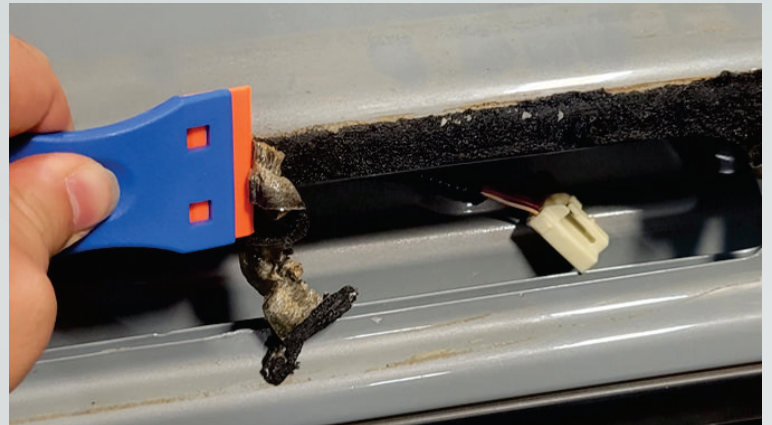
2. Using a small flathead or trim removal tool, depress the inner metal clip for each plastic hanger and then remove the hanger from the cab.



3. Slightly pull down the headliner near the rear window to access the two (2) 10mm nuts holding the third brake light to the cab. The 10mm nuts can be found in these two openings in the truck cab.



4. Using the trim removal tool, carefully wedge the tool between the brake light and the cab, loosening the foam seal from the cab in the process (Image 1). Once the foam seal has been fully broken, remove the brake light from the truck (Image 2). Gently remove old foam seal from the cab.



5. For steps on installing the Rapid Flash Module (SKU X3B01), see Page 4.

6. Installation is reverse of removal.

7. Turn on the truck and go through all modes to ensure proper functionality.

-END-

## RAPID FLASH MODULE INSTALLATION

1. Unclip the wiring harness from the back of the X3B Brake Light (Image 1)
2. Plug the female connector into the X3B Brake Light (Image 2)
3. Plug X3B Brake Light harness into male connector of the flasher module.
4. Peel back wrapper from double-sided tape on the flasher module. Stick and secure module onto either the back of the X3B Brake Light or the inside of the light cavity.
5. Turn on the truck and go through all modes to ensure proper functionality.
6. Enjoy your new X3B Brake Light with Rapid Flash!

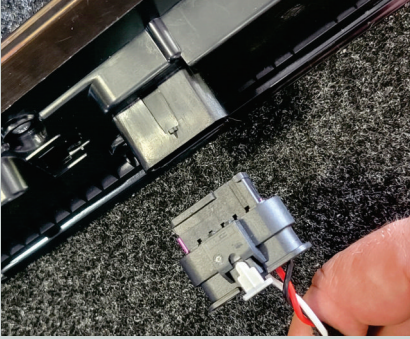


Image 1

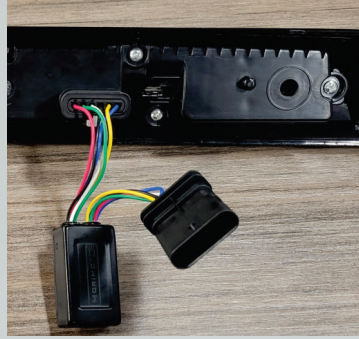


Image 2

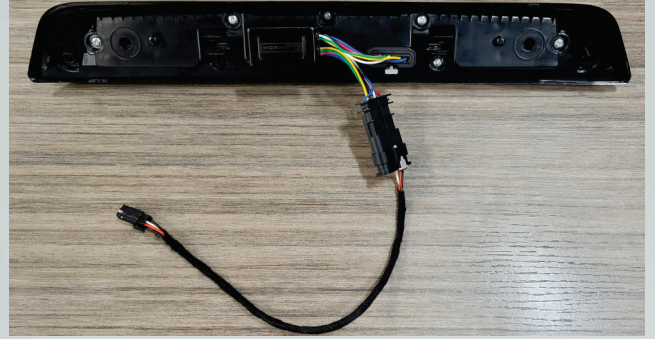


Image 3

-END-