



CHAOSFAB.COM

INSTALLATION INSTRUCTIONS

EXPEDITION SERIES LOWER CONTROL ARMS

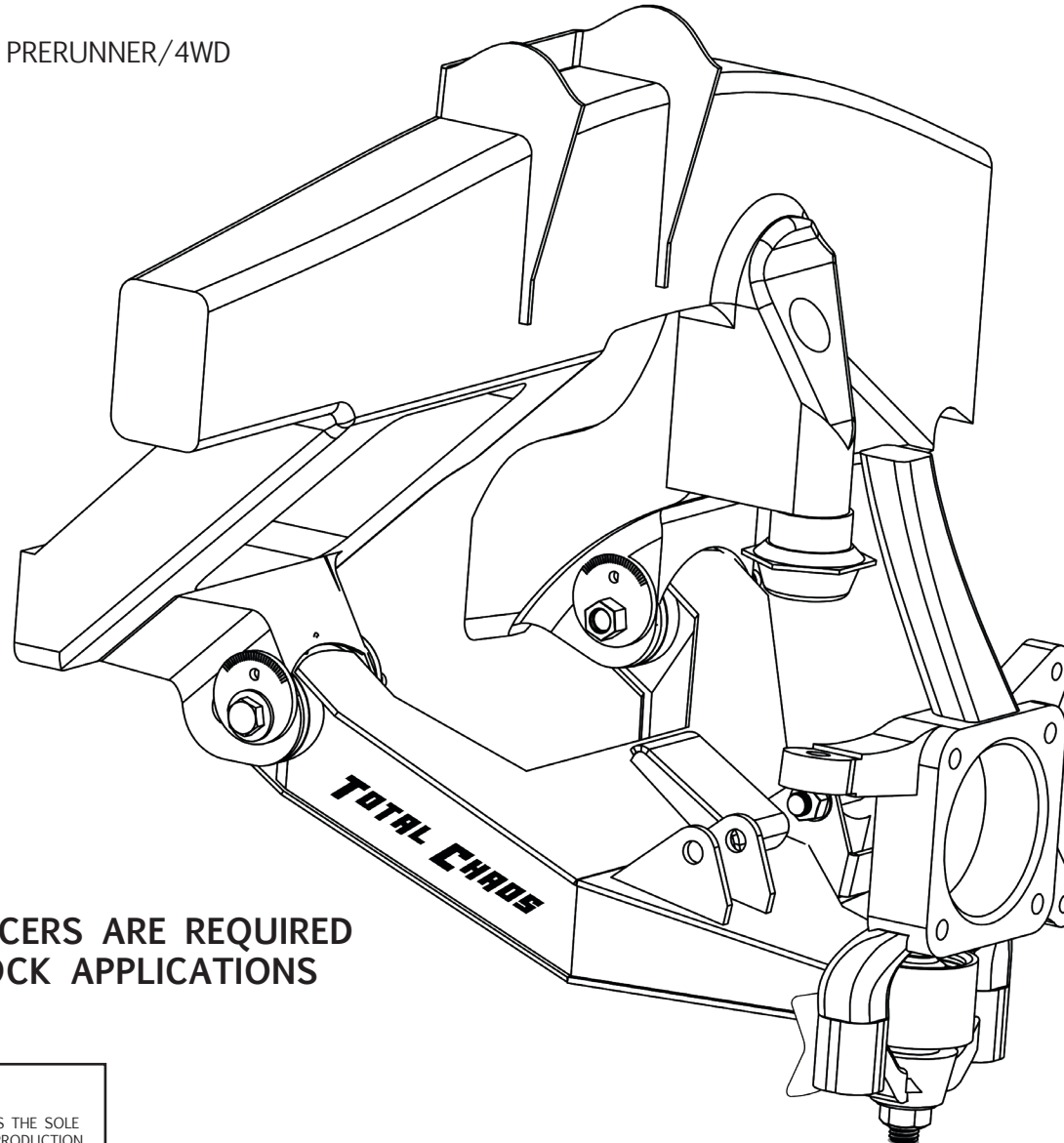
86555-E-16

86555-E-16-NSS

DATE: 4.25.19
REV: 01
SCALE: N.T.S.
PAGE: 1 OF 4
DRAWN: CM

DESIGNED TO FIT:

2016+ TOYOTA TACOMA PRERUNNER/4WD



**1.25" WHEEL SPACERS ARE REQUIRED
FOR DUAL SHOCK APPLICATIONS**

PROPRIETARY AND CONFIDENTIAL

THE INFORMATION CONTAINED IN THIS DRAWING IS THE SOLE PROPERTY OF TOTAL CHAOS FABRICATION. ANY REPRODUCTION IN PART OR AS A WHOLE WITHOUT THE WRITTEN PERMISSION OF TOTAL CHAOS FABRICATION IS PROHIBITED.

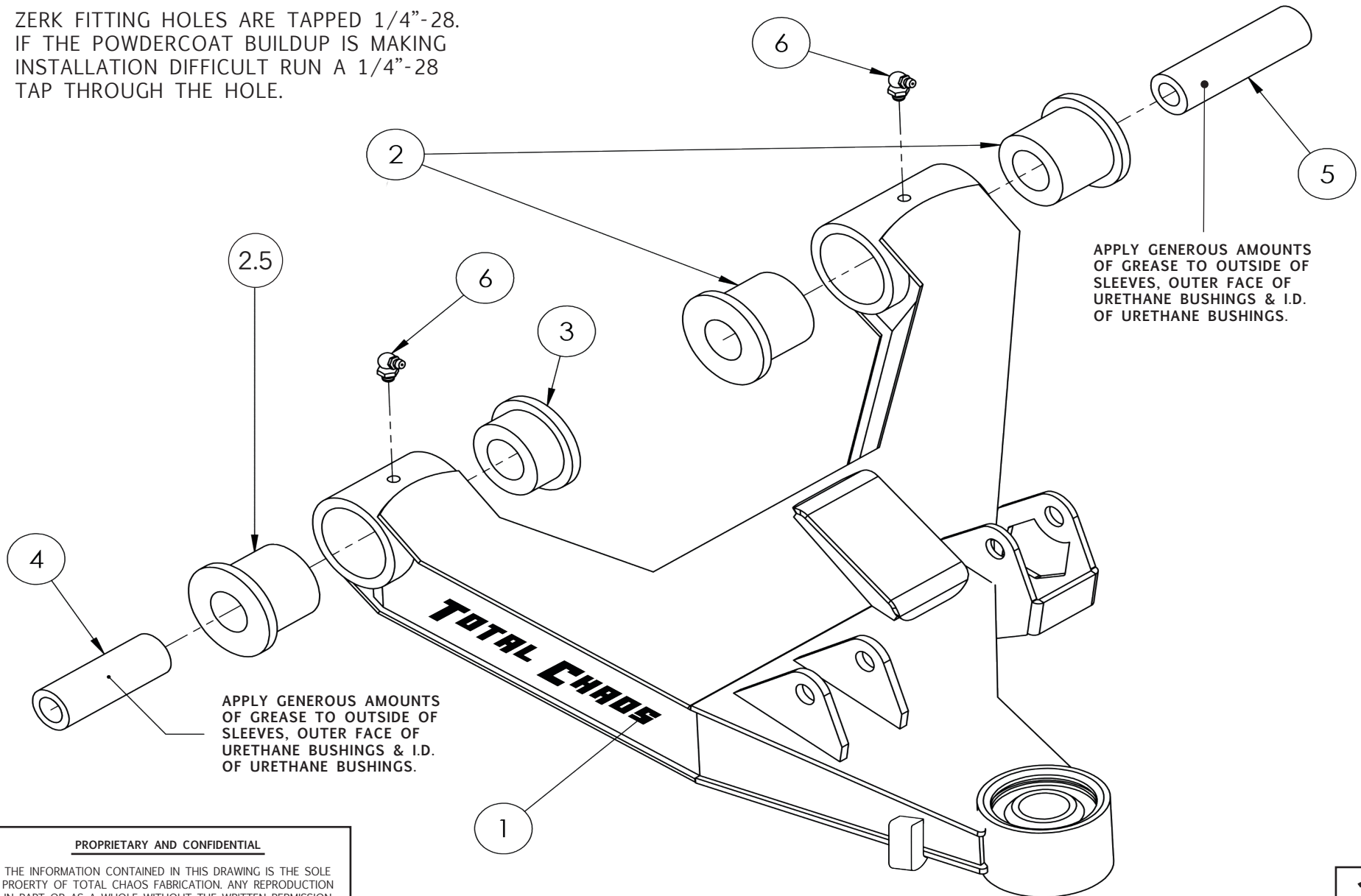
INSTALLATION INSTRUCTIONS

EXPEDITION SERIES LOWER CONTROL ARMS

86555-E-16
86555-E-16-NSS

DATE: 4.25.19
REV: 01
SCALE: N.T.S.
PAGE: 2 OF 4
DRAWN: CM

ZERK FITTING HOLES ARE TAPPED 1/4"-28.
IF THE POWDERCOAT BUILDUP IS MAKING
INSTALLATION DIFFICULT RUN A 1/4"-28
TAP THROUGH THE HOLE.



PROPRIETARY AND CONFIDENTIAL

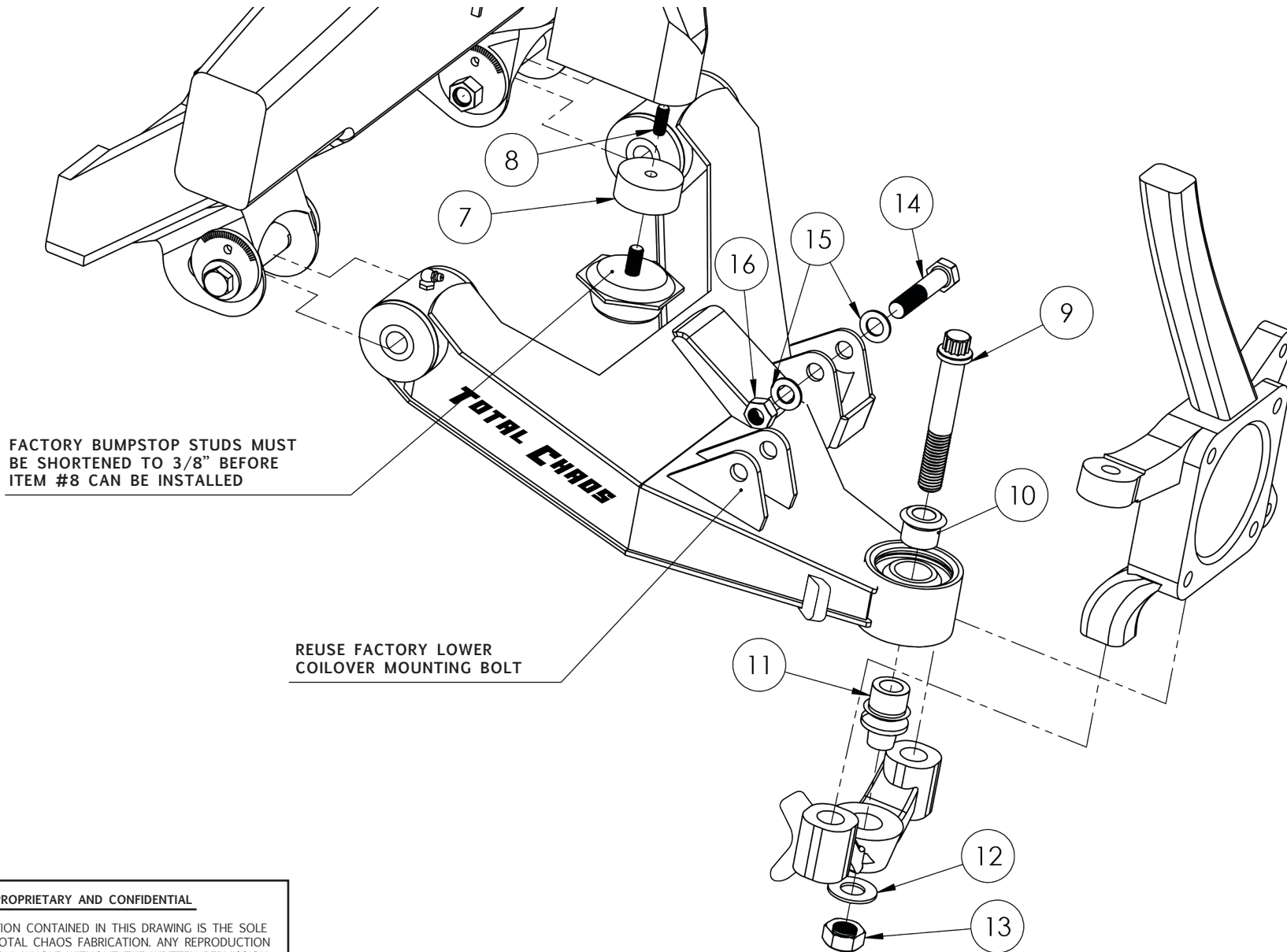
THE INFORMATION CONTAINED IN THIS DRAWING IS THE SOLE PROPERTY OF TOTAL CHAOS FABRICATION. ANY REPRODUCTION IN PART OR AS A WHOLE WITHOUT THE WRITTEN PERMISSION OF TOTAL CHAOS FABRICATION IS PROHIBITED.

INSTALLATION INSTRUCTIONS

EXPEDITION SERIES LOWER CONTROL ARMS

86555-E-16
86555-E-16-NSS

DATE: 4.25.19
REV: 01
SCALE: N.T.S.
PAGE: 3 OF 4
DRAWN: CM



FACTORY BUMPSTOP STUDS MUST BE SHORTENED TO 3/8" BEFORE ITEM #8 CAN BE INSTALLED

REUSE FACTORY LOWER COILOVER MOUNTING BOLT

PROPRIETARY AND CONFIDENTIAL

THE INFORMATION CONTAINED IN THIS DRAWING IS THE SOLE PROPERTY OF TOTAL CHAOS FABRICATION. ANY REPRODUCTION IN PART OR AS A WHOLE WITHOUT THE WRITTEN PERMISSION OF TOTAL CHAOS FABRICATION IS PROHIBITED.

INSTALLATION INSTRUCTIONS

EXPEDITION SERIES LOWER CONTROL ARMS

86555-E-16
86555-E-16-NSS

DATE: 4.25.19
REV: 01
SCALE: N.T.S.
PAGE: 4 OF 4
DRAWN: CM

INSTALLATION NOTES

- THE FACTORY MANUAL IS REQUIRED FOR TORQUE SPECIFICATIONS ON ALL HARDWARE. THIS PROCEDURE WILL INVOLVE THE REMOVAL AND RE-INSTALLATION OF MANY PARTS. ALWAYS USE FACTORY REPLACEMENTS FOR WORN OR DAMAGED PARTS. ALWAYS USE NEW COTTER KEYS DURING RE-INSTALLATION.
- SOME ITEMS ARE NOT SHOWN FOR CLARITY
- PAGE 2
APPLY GENEROUS AMOUNTS OF GREASE TO OUTSIDE OF SLEEVES, OUTER FACE OF URETHANE BUSHINGS & I.D. OF URETHANE BUSHINGS
- PAGE 3
TORQUE ITEM #9 TO 100 FT/LBS
- FACTORY BUMPSTOPS STUDS MUST BE SHORTENED TO 3/8" BEFORE ITEM #8 CAN BE INSTALLED.

TOTAL CHAOS FABRICATION
159 N. MAPLE ST. UNIT J
CORONA, CA 92880
951.737.9682

PARTS LIST

ITEM #	PART #	QTY	ITEM DESCRIPTION
1	86525-E-L	1	LOWER LEFT CONTROL ARM
	86525-E-R	1	LOWER RIGHT CONTROL ARM
2	60292	4	BUSHING - URETHANE LONG HALF 1.25" ID
2.5	60293	2	BUSHING - URETHANE LONG HALF 1" ID
3	60685	2	BUSHING - URETHANE SHORT HALF
4	68608	2	INNER SLEEVE - LOWER ARM FRONT
5	68609	2	INNER SLEEVE - LOWER ARM REAR
6	10005	4	FITTING - GREASE (ZERK)
7	68610	2	SPACER - BUMP STOP
8	10611	2	STUD - 10MM X 1.00"
9	10141	2	BOLT - 5/8"-18 X 4.00" 12-POINT
10	10058-C	2	HIGH MISALIGNMENT SPACER: 1-5/8" CUSTOM
11	10058-TAC	2	TAPERED ADAPTER: LOWER A-ARM
12	12103	2	WASHER - 5/8" AN (GOLD ZINC)
13	11102	2	NUT - 5/8"-18 GRADE C-LOCK
14*	10025	2	BOLT - 1/2"-20 X 2.50" GRADE 8 (ZINC)
15*	12003	4	WASHER - 1/2" AN
16*	11001	2	NUT - 1/2"-20 NYLOCK (ZINC)
Pre-Installed	FK-WSSX16T-1	2	1" UNIBALL STAINLESS W/ PTFE LINER
Pre-Installed	30604	2	SNAP RING: 1" UNIBALL

* DUAL SHOCK APPLICATIONS ONLY

PROPRIETARY AND CONFIDENTIAL

THE INFORMATION CONTAINED IN THIS DRAWING IS THE SOLE PROPERTY OF TOTAL CHAOS FABRICATION. ANY REPRODUCTION IN PART OR AS A WHOLE WITHOUT THE WRITTEN PERMISSION OF TOTAL CHAOS FABRICATION IS PROHIBITED.