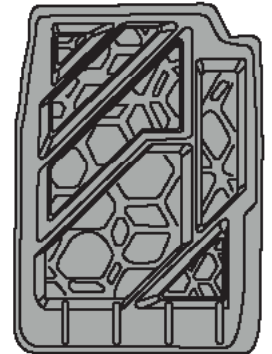
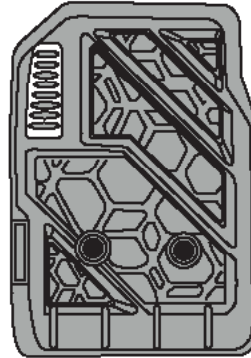
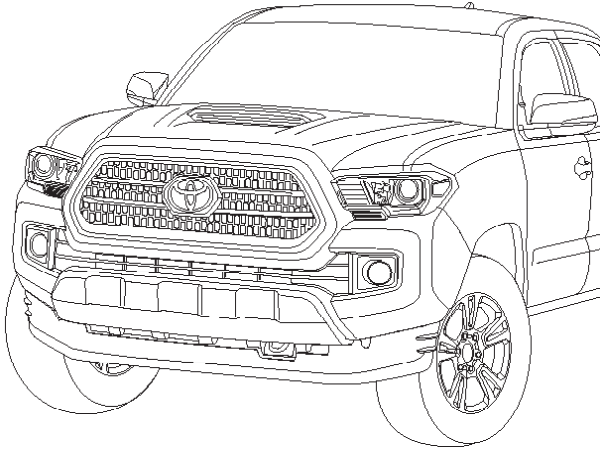


INSTALLATION MANUAL

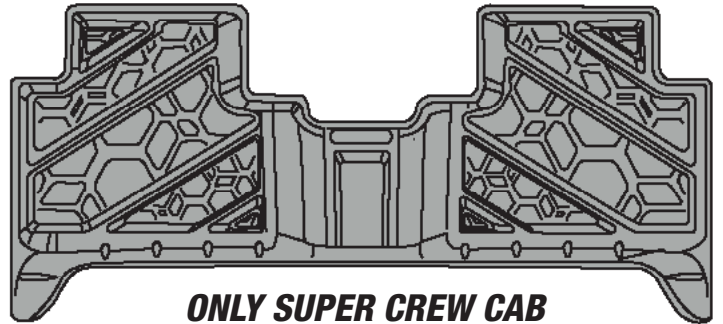
FLOOR LINERS SET TACOMA 2016

PART #: TO02A16



LH ALL TYPE OF CABS RH

PART: 1140ENTUTO02A18 PART: 1140FNTUTO02A17

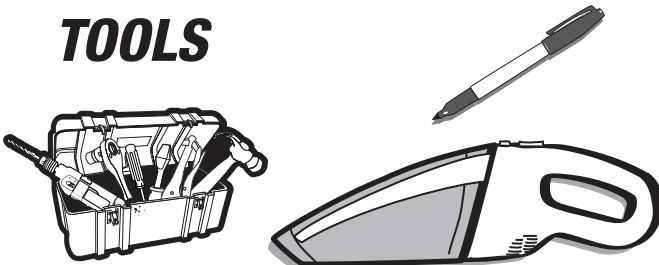


ONLY SUPER CREW CAB
PART: 1140DNTUTO02A19

IMPORTANT


NOT DESIGNED OR RECOMMENDED
FOR MODELS EQUIPPED WITH VINYL
FLOORING

TOOLS



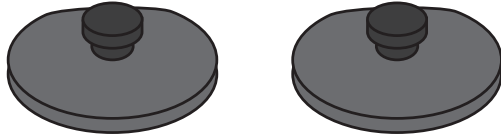
! READ CAREFULLY BEFORE
INSTALLATION

CHECK LIST

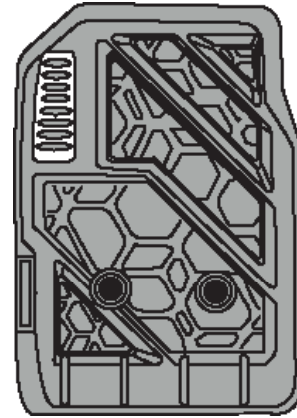
ITEM	DESCRIPTION	DRAWING	AMOUNT
A	DOMES - AIRDESIGN		Included 3 pcs

INSTALLATION MANUAL
1 BEFORE INSTALLING

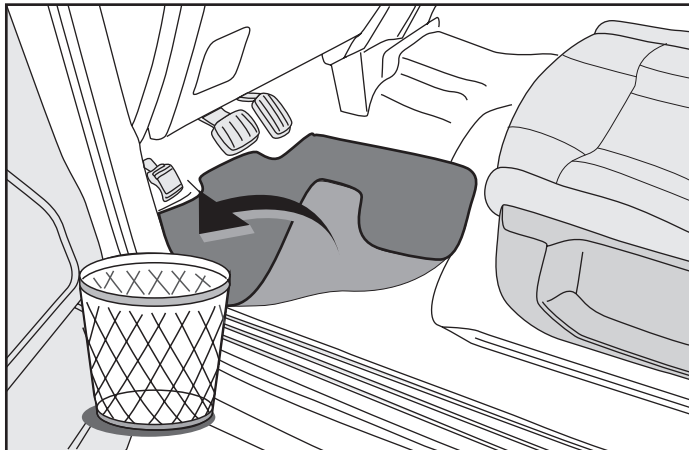
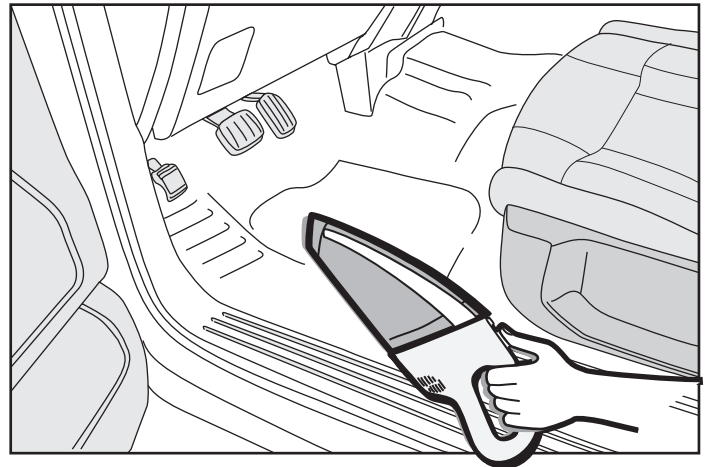
MAKE SURE YOUR VEHICLE ALREADY HAVE OEM CAR MAT FASTENERS YOU MUST HAVE THEM FOR PROPER INSTALLATION



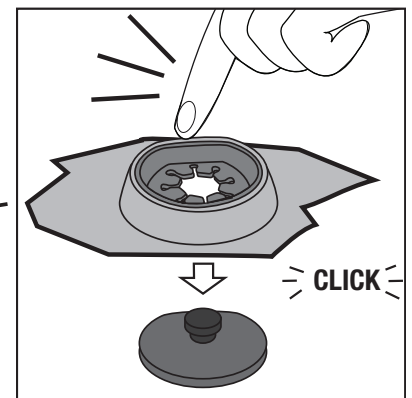
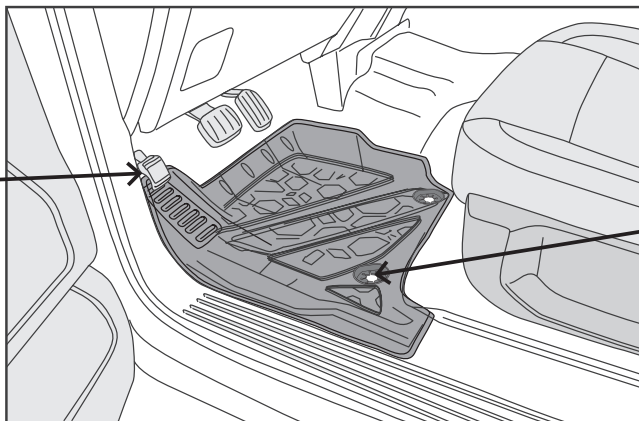
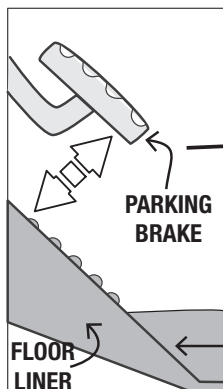
IF IT DOES NOT HAVE, GET THIS PARTS FROM YOUR LOCAL DEALER

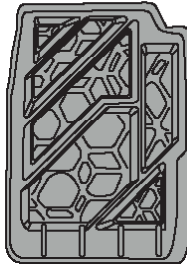
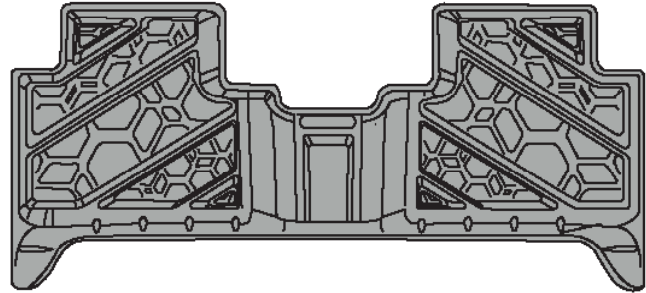
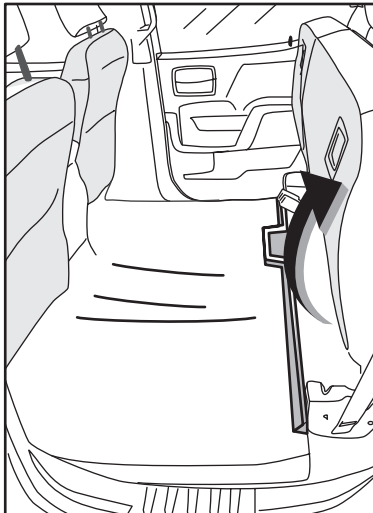
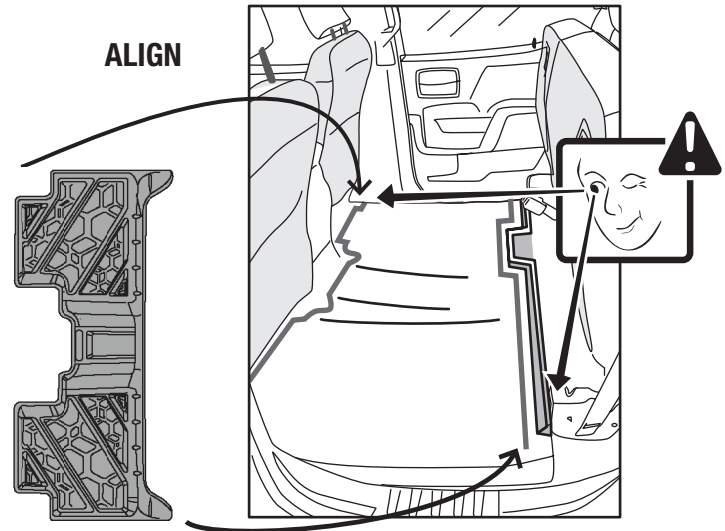
2 IDENTIFY


DRIVER'S SIDE

3 REMOVE OEM MAT

4 VACUUM

5 MOUNT

UNOBSTRUCTED



INSTALLATION MANUAL
6 FOR CO-DRIVER'S SIDE REPEAT STEPS 3 & 4
RH
FRONT

BACK
7 FOR REAR SIDE REPEAT STEPS 3 & 4
REAR
FRONT

BACK
8 LIFT UP

9 MOUNT

IMPORTANT

FAILURE TO CORRECTLY INSTALL OR RE-INSTALL THE FLOOR LINER TO THE ABOVE INSTRUCTIONS COULD RESULT IN THE LOSS OF CONTROL OF THE VEHICLE AND DEATH OR SERIOUS INJURY.

REGULAR CLEANING EXTENDS THE LIFE OF YOUR FLOOR LINERS. CLEAN USING ONLY A MILD DETERGENT SOAP AND WATER. DO NOT USE HARSH CHEMICALS OR ABRASIVE TYPE CLEANERS AS THESE PRODUCTS MAY DAMAGE THE FLOOR LINER.