

# INSTALLATION INSTRUCTIONS

ESTIMATED TIME TO INSTALL: 1-1.5 HOURS

## TOOLS REQUIRED:

- 10MM SOCKET + 1/4" RATCHET
- WIRE CUTTERS
- SHARP RAZOR BLADE
- RUBBING ALCOHOL + RAG



1. Remove negative battery terminal from the battery using a 10mm socket or wrench. This is a critical step when any factory harness connections are unplugged.



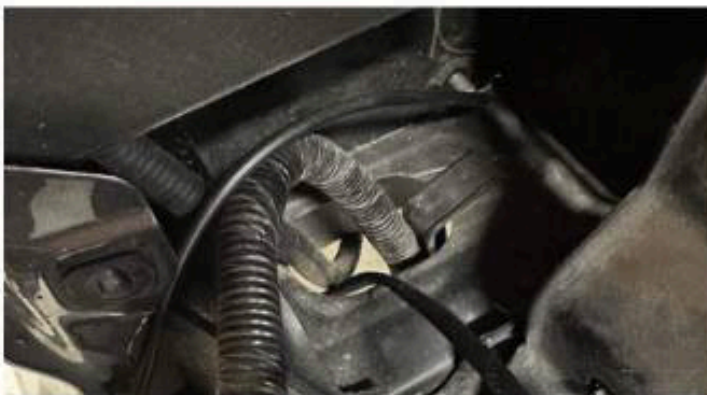
2. Loosen top and bottom bolts holding both tail lights to the truck. The middle bolt does not need to be loosened.



3. Twist and turn bulb holders to remove tail lights from truck completely. Store tail lights on a soft surface to prevent scratches.



4. Locate threaded stud behind the driver side tail light. Mount the relay to the stud using the supplied nut. The purple wire ring terminal will go over the stud before tightening nut.



5. Route the harness down and under the truck through the hole below the tail light. Leave it on the ground for now.



6. Run the long part of the wire harness along the frame up to the driver side kick panel area. Avoid areas with moving parts (suspension) and high heat (exhaust).



7. Follow existing wire loom where possible. The loom should run along the frame above the leaf springs and rear tire.



8. Keep following the loom over where the rear brake line bracket is. The factory loom should run along the box frame behind the rocker panels all the way to behind driver side tire.



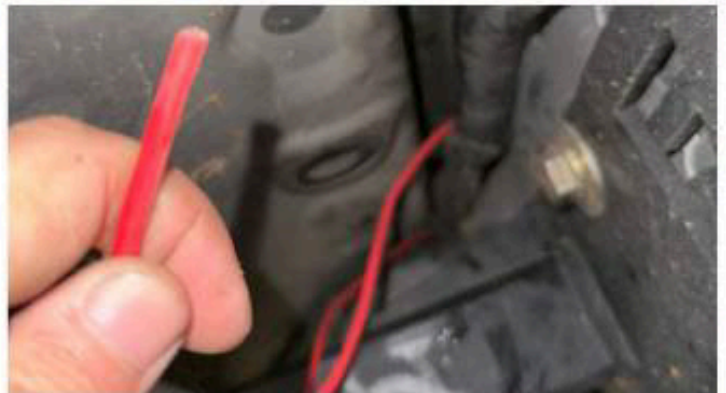
9. There is a point where the channel becomes very narrow. This is a good time to use the provided WHITE stiff wire. It may be necessary to remove splash guard and fish wire from the front.



10. Only connect the fish wire to the RED fused wire as this is the only wire that needs to enter the engine bay from below. BLUE and PURPLE wires will be routed elsewhere.



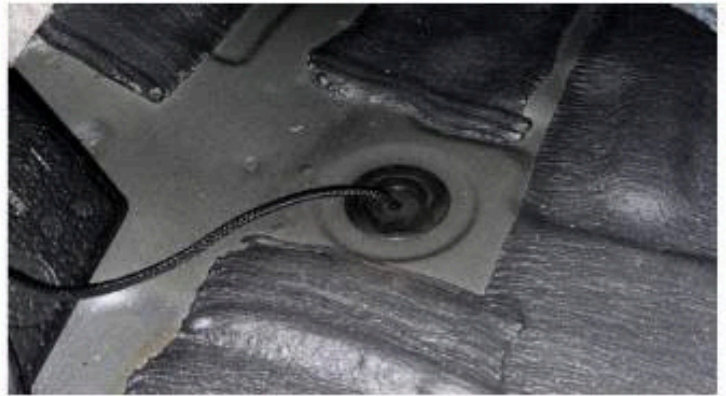
11. Open the driver side door and remove the scuff plate and kick panels. Pull carpet up to find grommet in floor. Slice grommet with knife for later (small slit just wide enough for 2 wires).



12. Use provided WHITE stiff wire to fish through the hole (without grommet) and to under the truck. Red fish wire shown for illustration only.



13. Tape BLUE and PURPLE wires to fish wire and pull up into the cab of the truck. Be careful with the exposed pin terminals as they can be damaged if handled improperly.



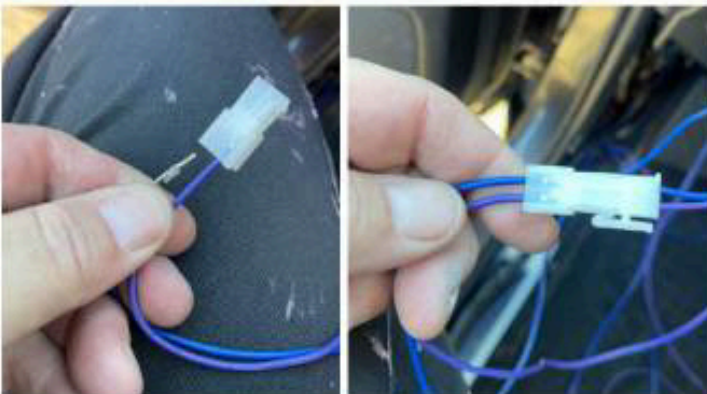
14. Insert pin terminals through the sliced grommet. Replace the grommet in the hole. Pull the slack out of the harness so it's neat under the truck. (Optional) Use RTV or silicone to seal hole.



15. Remove the left side switch panel containing the Cargo Light Switch by pulling away from the front of the truck. Disconnect the Cargo Light Switch connector on the back of the panel.

**PHOTO  
COMING  
SOON**

16. Route the BLUE and PURPLE wires from the footwell area up the kick panel to the hole where the switch panel mounts. It might be helpful to use the WHITE wire to fish them.



17. Pin the provided loose connector matching the wire colors to the Cargo Light Breakout Harness. It is difficult to de-pin this connector so matching the colors before seating is critical.



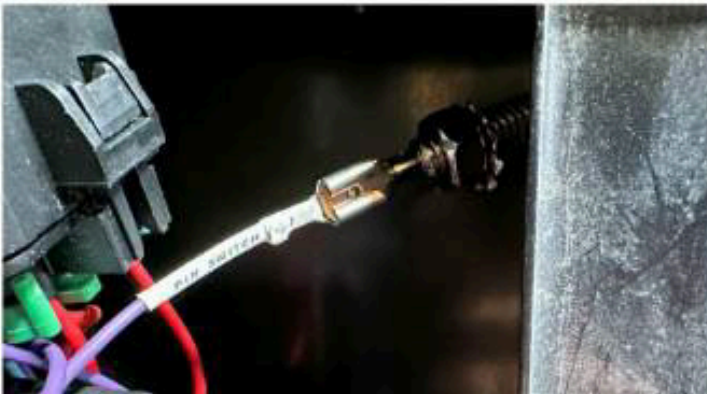
18. Install Cargo Light Switch Breakout Harness. It will plug directly into the back of the switch and connect to the factory harness. Connect BLUE and PURPLE wires and re-install switch panel.



19. Return to the rear of the truck and drop tailgate. Find rubber bumper on the driver side of the truck and remove from factory hole.



20. Remove the nut and toothed washer from the pin switch and insert into hole where rubber bumper was located. Tighten the nut making sure that the washer cuts into the painted surface.



21. Plug in the pin switch to the spade connector coming from the purple wire on the relay. Finished product should look like the factory bumper and will depress when tailgate closes.



22. (Optional) Cover the Y adapter wire of the harness with provide split loom. This wire will pass under the bumper area so looming is advised.



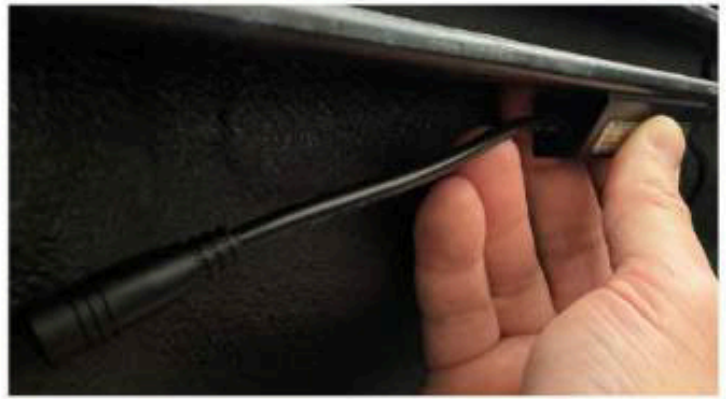
23. Use fish wire to bring the SHORT end of the Y adapter into the driver side of the bed. There is a hole behind the tail light above the relay that was mounted that the wire should enter.



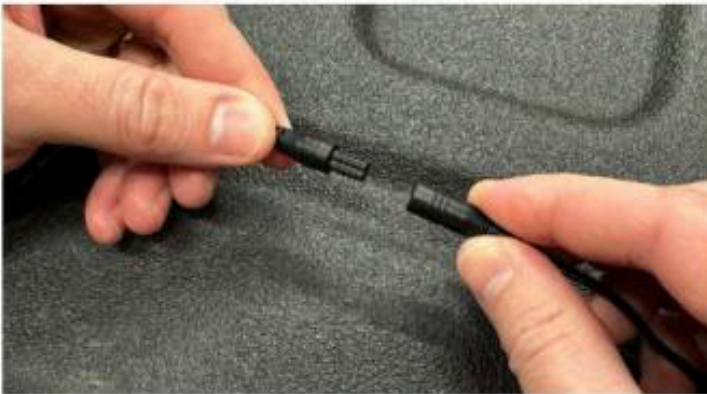
24. The wire will exit below the plastic top of the bed. It might be helpful to use the fish wire and try to enter the hole from the bed side rather than tail light side.



25. Perform the same steps on the opposite side of the truck. The long Y adapter end should be zip tied to factory loom under the bumper area.



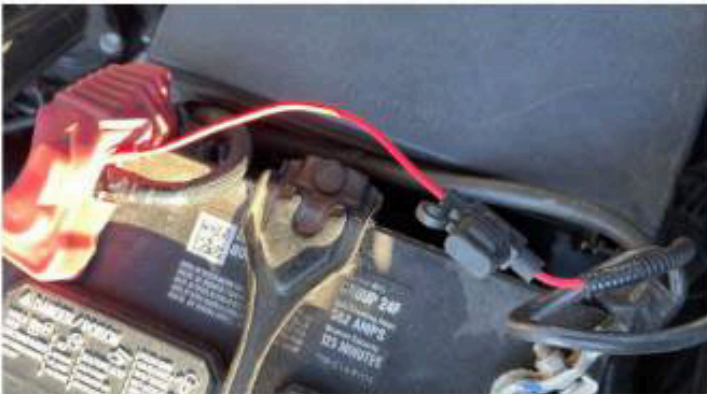
26. Clean rail and bar lights with rubbing alcohol. Attach tape to the bar light and mount in desired location. First bar should be mounted so that the plug can be hidden. Match distance on other side.



27. Bars should be spaced equal distance from both ends but may vary based on bed length. Connect 4 foot extension wire between bar lights. Repeat for the other side.



28. Heating the wire hider may be required due to memory. Measure the distance between lights and cut wire hider with sharp razor. Clean surface and tape to rail. Repeat for the other side.



29. Connect the red fused wire to the positive battery terminal in the engine bay. Re-attach negative battery cable.



30. Test functionality. When the Cargo Switch inside the truck is in DOOR position dropping the tailgate should turn all of the lights on. Re-assemble truck. INSTALL COMPLETE.

**Note: It is your choice how long you spend hiding wiring. Ideally the wire hider should be nice and straight and minimal wire should be showing.**