



# SalinoVatis

## SALT-POWERED HEALTH



### Operating instructions - SalinoVatis Mini Saline

**Thank you for choosing SalinoVatis!**

The SalinoVatis Mini Saline is based on the principle of graduation towers and uses the beneficial effects of salty air to support your respiratory tract and improve your general well-being.

***Experience the power of nature!***

**IMPORTANT INFORMATION:**

SalinoVatis is **not** a medical product and **no** promise of healing is given.

If you have any questions or problems with your device, please contact [aero@salinovatis.com](mailto:aero@salinovatis.com).

Read the operating instructions carefully before using the device to avoid damage. Keep the instructions in a safe place and enclose them when passing on the device.

**QUICK START:**



Follow for the video assembly instructions!

Please consider leaving us feedback-Thanks!

Please note the safety instructions in the written manual.

**Content**

**Scope of delivery** ..... 2

**Health advice** ..... 3

**Device at a glance** ..... 4

**Intended use** ..... 4

**Safety instructions** ..... 4

**Location** ..... 5

**Assembly** ..... 6

**Start of operation** ..... 8

**Maintenance and cleaning** ..... 9

**Troubleshooting** ..... 10

**Disposal** ..... 12

**Technical data sheet** ..... 12

**Scope of delivery**

Check the scope of delivery for completeness and transport damage immediately upon receipt. If any defects are found, do not use the device, but contact customer service directly via [aero@salinovatis.com](mailto:aero@salinovatis.com).

**SalinoVatis contains:**

- 1x structural tower**
- 1x piece of hose**

delivered assembled

- 1x drip tray**
- 1x anti-slosh grid with integrated level indicator (float)**
- 1x pump with USB cable + extension with switch**

delivered assembled

**NOTE:** For operation, you need liquid (water or brine) and a USB power supply (~5V voltage), which are not included in the scope of delivery.

We recommend an additional, easy-to-clean surface (e.g. tray) of at least 40 x 30 cm.

## Health advice

SalinoVatis is not a medical product and may affect your state of health. Use it responsibly.

The effect of the Mini Saline is individual and can have positive, neutral or, in rare cases, negative effects.

## About SalinoVatis

The principle of SalinoVatis is derived from the graduation towers in spas. Water in the brine can evaporate through the constant, slow sprinkling of a particularly large surface. This increases the salt content in the brine and in the surrounding air. The beneficial properties of the increased salt concentration in the air in the immediate vicinity of the large graduation towers attract people suffering from respiratory diseases or those interested in lung health to today's spas.

SalinoVatis brings the effects of a graduation tower to your home. The salty air is said to have an antibacterial, stimulating and circulation-enhancing effect. The benefits of the Mini Saline can be used to support asthma, COPD, blocked airways, allergies or neurodermatitis.

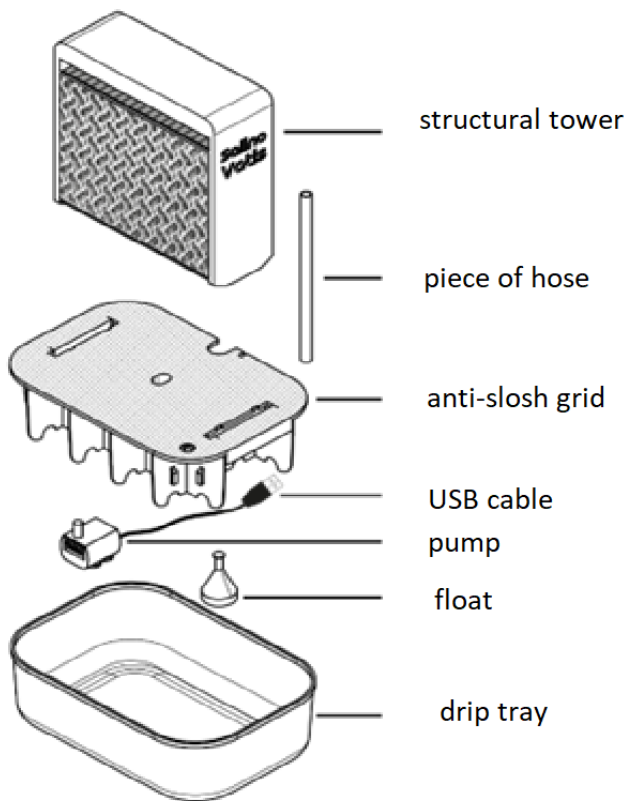
## Important notes

SalinoVatis does not replace medical care for respiratory diseases. Consult your doctor before you start using SalinoVatis regularly.

People with chronic illnesses such as high blood pressure, heart or thyroid disease should only use the therapy after consulting their doctor, as interactions with medication may occur.

**IMPORTANT:** If you experience any negative effects when using SalinoVatis (shortness of breath, palpitations, dizziness, headaches, watery eyes, itchy skin, etc.), discontinue treatment with SalinoVatis immediately and consult a doctor.

## Device at a glance



**NOTE:** The structural tower may have slight irregularities in the visible pattern due to the manufacturing process. This is not a quality defect.

The complex structure can only be achieved with a 3D printer and is manufactured individually. The appearance of SalinoVatis devices may differ from one another. This does not affect the functionality in any way.

## Intended use

SalinoVatis is intended for the **evaporation of salt solution (brine)**. Only use brine or clear water in accordance with the instructions. Replace the brine at least every 4 weeks or if the unit is out of use for more than 7 days.

The recommended mixture consists of 300g of fine-grained mineral salt to 2 liters of cold to lukewarm filtered or previously boiled tap water. Do not use coarse sea salt and make sure that the salt is completely dissolved to prevent damage to the pump.

If clear water is used, water should be replaced regularly to prevent bacterial contamination.

Store the appliance emptied and cleaned. If the appliance is not used for longer periods, e.g. when on vacation, remove the brine from the drip tray, rinse the pump and individual parts and disconnect the mains plug.

## Safety instructions

SalinoVatis should not be used unsupervised by children under 8 years of age or by persons with mental or physical impairments.

Do not modify the design or electronics of the device and do not add any additional functions. Permanent unsupervised operation using smart home technology is not intended.

In the event of damage that could impair safe operation, have the device checked by customer service at [aero@salinovatis.com](mailto:aero@salinovatis.com) and repaired if necessary.

### **Danger - risk of electric shock**

- Only operate and store SalinoVatis in closed rooms with low to moderate humidity.
- Make sure that the power supply unit or the USB port do not come into contact with moisture. In the event of contact, disconnect the power connection immediately and allow the parts to dry thoroughly and check them carefully before reconnecting.
- Do not touch any sockets or parts of the electronics with wet hands.
- Do not stretch the power supply cable. There is a risk of tipping as well as an increased risk of condensation being carried directly to the power connection via the cable.
- Disconnect the appliance from the power supply for maintenance or cleaning work.
- Check the appliance for damage or moisture at the connection points before each use.

### **Warning - risk of injury**

- **Choking hazard:** Keep packaging material away from children and animals.
- **Strangulation hazard:** Ensure that small children and animals do not have access to the cables.
- **Risk of swallowing:** Keep small parts out of the reach of children.
- **Risk of poisoning:** Do not swallow brine and do not allow concentrated brine to get into your eyes. In the event of eye contact, spool with plenty of tap water.
- Do not touch the pump during operation.
- Place the connecting cable securely to avoid tripping hazards and ensure that the brine container does not tip over.

### **Note - Risk of material and property damage**

- Never operate the appliance unfilled and only connect it to the power circuit when the pump is covered with brine or clear water.
- Do not tilt the appliance when it is filled with liquid.
- If any damage is detected, switch off the appliance and have it checked.
- Do not carry the appliance while it is connected to the power supply and do not operate it after dropping or spilling it without having it checked.
- Do not bend the individual parts excessively to avoid breakage and ensure that surrounding objects are insensitive to moisture and salt.
- Ensure that the brine remains free of impurities and do not add any additives.
- Do not clean the components in the dishwasher.
- Ensure that the water does not exceed a maximum temperature of 35°C to prevent damage to the appliance.
- Ventilate regularly and check the immediate vicinity of the appliance regularly for traces of moisture.

### **Location**

SalinoVatis can be operated around the clock and is suitable for long-term use.

Place the device in a location without strong direct sunlight and heat development.

Leave a distance of at least 30 cm between the wall / immovable objects such as shelves and the Mini Saline.

Do not store any moisture-sensitive objects near the Mini Saline. Salt residues can cause stains on unpainted or uncoated surfaces.

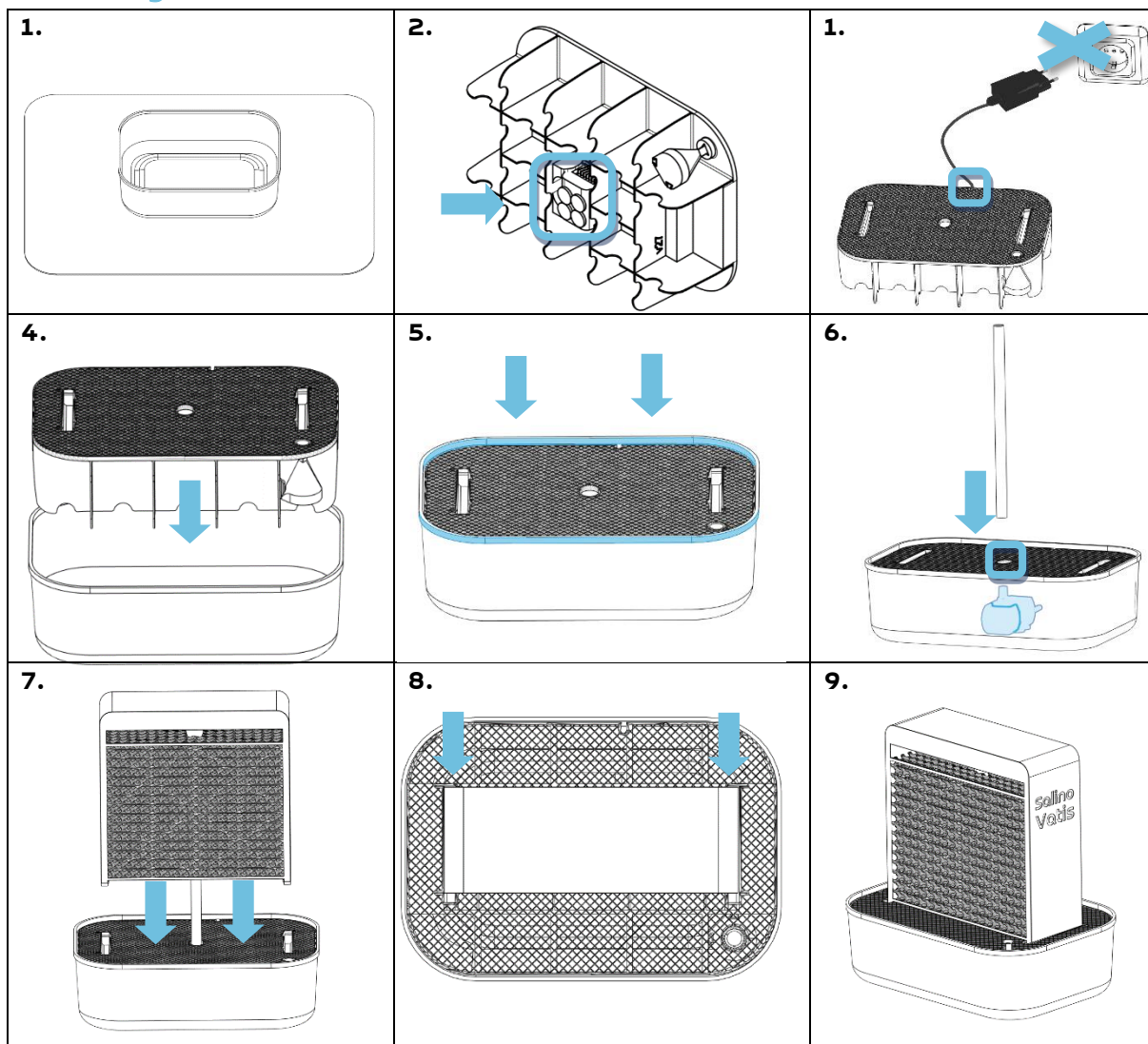
Operate the appliance in rooms with regulated temperature and humidity (5°C- 40°C, max. 75% humidity).

Pay attention to potential interference and avoid children or pets interacting with the appliance unsupervised.

### Attention - risk of electric shock

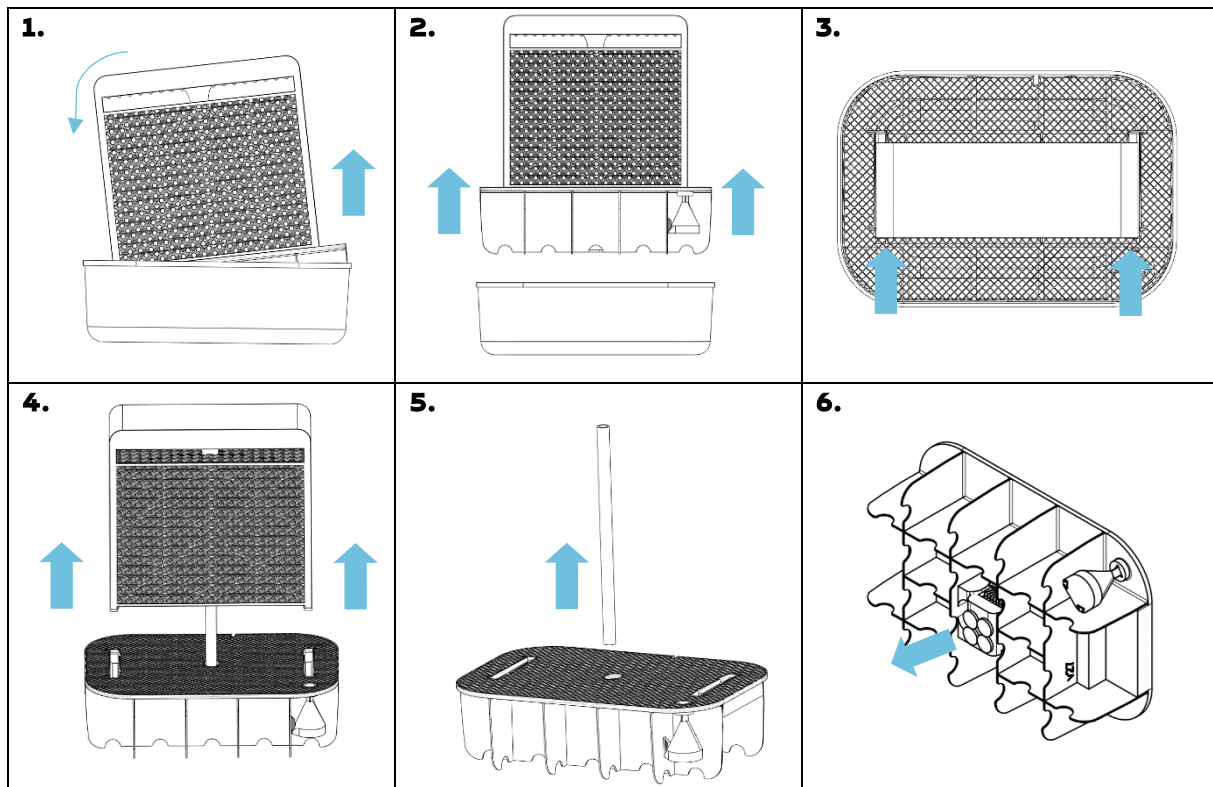
Due to the increased salt content, there may be increased conductivity in the vicinity of the appliance. Be careful to avoid electric shocks.

### Assembly



1. place the drip tray securely, ideally on a larger tray.
2. click the pump into the holder provided, centered on the underside of the anti-slosh grid.
3. guide the cable through the recess in the grid and plug the USB connection into a mains plug. Ensure that the power supply unit is not connected until the device is filled with brine or water.
4. place the anti-slosh grid together with the pump in the drip tray with the fins facing downwards.
5. press the grid down slightly to bring the suction buttons of the pump into contact with the bottom of the drip tray. Use the edge of the drip tray as a guide, this should sit flush over the grid when the anti-slosh grid is secure in the drip tray.
6. insert the piece of hose onto the pump extension through the hole in the center of the anti-slosh grid and check that it is secure.
7. insert the structural tower into the two slotted recesses at the markings (closer to the cable). Make sure that the piece of hose runs through the channel provided in the structural tower.
8. push the tower backwards (towards the level indicator) until you feel resistance. The tower is now locked in place.
9. finished!

## Zerlegung



1. carefully lift the tower and tilt it to one of the short sides. If there is resistance, tilt the tower to the other side. Avoid exerting force.
2. reach under the tilted grid and lift it together with the tower out of the drip tray and set it down.
3. grasp the tower with both hands and pull it with light force towards the cable recess.

4. lift the tower up and out of the grid.
5. Pull off the hose.
6. turn the grid and gently release the pump from the recess. Avoid applying strong pressure to prevent breakage.

## Start of operation

**Brine mixture:** Mix 300g of fine salt with 2 liters of water. Use filtered, previously boiled or distilled water.

Dissolve the salt completely in the water. Make sure that the water has cooled down to a maximum of 35°C before adding it to the Mini Saline.

Fill at least 1 liter of brine or water into the drip tray. This is important to prevent damage to the pump.

Connect SalinoVatis to the power circuit as soon as there is sufficient liquid in the drip tray. Make sure that the fill level indicator is slightly raised. During normal operation, the SalinoVatis pump lights up blue. If SalinoVatis lights up red, there is too little liquid in the appliance. Go to the "Troubleshooting" section.

Check whether drops are forming at the top of the structural tower and are slowly flowing back over the tower into the drip tray. Unplug the appliance if there is no steady flow and go to the "Troubleshooting" section.

If necessary, check the salt content of the brine using a kitchen scale and the chart provided.

Weight of 100ml of brine	Salt concentration of brine
106g	ca. 26,5%
108g	ca. 38%
110g	ca. 44%
112g	ca. 55%
114g	ca. 63%

### NOTE:

When using brine, ensure that the salt content does not fall below 8% to prevent the growth of bacteria and mold spores.

If SalinoVatis is operated exclusively with clear water, mold may form in the surrounding area. Carry out regular ventilation and drying phases and regularly remove condensation from sensitive surfaces with a cloth.

Up to 600g of salt can be added to 2 liters of water. A higher salt concentration leads to faster deposition of salt crystals and can cause problems with the pump. Clean the appliance and the surrounding area regularly and, if the salt content is high, only fill the drip tray with clear water periodically to prevent damage.

**Level indicator:** The float should always protrude slightly from the anti-slosh grid during operation. If the float is exactly level with the grid or below, there is less than 900 ml of liquid in SalinoVatis. To ensure safe operation of the pump, brine or water must then be added at the



latest. The fill level indicator does not give an exact indication of the amount of brine in the drip tray. Do not add any more liquid as soon as water rises through the grid of the anti-slosh grid.

## Maintenance and cleaning

### NOTES:

Completely replace the brine regularly, at least every 4 weeks. In the event of longer downtimes (7 days or more), the brine should also be replaced before SalinoVatis is put back into operation. The water should also be replaced after 7 days at the latest if SalinoVatis is operated exclusively as a humidifier without salt.

If the pump is put back into operation after a longer period of standstill, salinization can lead to malfunctions. Clean the pump thoroughly to restore its full functionality.

Deposits of salt crystals occur on the appliance during operation. These can be removed with a damp sponge to prevent splashing and unexpected draining of the brine.

Salt deposits can be effectively dissolved using a squeeze bottle filled with water. Generously wet the areas to be cleaned so that the salt dissolves.

After standing times, check whether the channels at the top of the structural tower have become clogged. If necessary, clean the channels with a damp sponge to prevent uncontrolled brine drainage and splashing.

If the channels are heavily salinated, the Mini Saline should be cleaned. In some cases, the introduction of clear water into the collection tank can help to dissolve salt deposits.

All the steps described should be followed for complete cleaning.

### Cleaning instructions:

**ATTENTION:** Only clean SalinoVatis by hand with cold to lukewarm water (up to a maximum of 35°C). Do **not** put the individual parts in the dishwasher or washing machine!

- 1.** First unplug the mains plug.
- 2.** Empty the drip tray completely.
- 3.** Disassemble the Mini Saline into its main components for cleaning, as shown under "Device at a glance".
- 4.** Remove the piece of hose and place it together with the anti-slosh grid, structural tower and drip tray in a sink or large container. Fill it with clear water (maximum 35°C) and leave everything to soak for at least 15 minutes. Then clean the parts with a cloth, sponge or soft brush. A pipe cleaner can be used for the hose section. Rinse all parts thoroughly with running water and allow them to dry briefly before reassembling the SalinoVatis. Alternatively, you can also rinse the parts with a shower spray.  
Setzen Sie die Teile der Mini-Saline wieder entsprechend Punkt „Aufbau“ zusammen.
- 5.** Reassemble the parts of the Mini Saline as described under "Assembly".
- 6.** Replace the brine completely every 4 weeks or if it becomes dirty.

**Pump:** To maintain the service life and function of the pump in SalinoVatis, regular maintenance and cleaning is important. To maintain the warranty, rinse the pump with water at a maximum

temperature of 35°C and do not open it. For stubborn deposits, carefully use a blunt object. To remove salt deposits, soak the pump in lukewarm water and then rinse it. Run the pump through with clear water for a short time. Now you can put it back into SalinoVatis.

Avoid contact with the running pump and use pre-filtered water for the brine to extend maintenance intervals.

**ATTENTION:** Always avoid direct contact of the USB plug with water.

## Troubleshooting

Error	Possible cause	Solution
SalinoVatis lights up red	Pump sucks air- Automatic water stop	If the fill level in SalinoVatis is too low, pump activity is automatically stopped to protect the pump. SalinoVatis lights up red after a forced stop. Switch off SalinoVatis (flip the switch or pull out the mains plug) and top up with sufficient liquid. Switch SalinoVatis on again and check the pump activity. SalinoVatis should light up blue again.
Uneven droplet distribution	Static reservoir in the lid	Move the structure tower in a circular motion. Carefully tilt it to all sides (without tilting the drip tray too much so that water could escape from the tray) while it is switched on until the drip channels completely release water again.
No brine flow during pump operation	Connections between individual parts are interrupted	Check all connection points (start of hose to structure tower, end of hose to pump extension) and connect them more firmly.
""	Slider set incorrectly	You can vary the flow of the pump using a slider. Check whether the controller is set to minimum output and set a higher flow rate if necessary.
""	Hose defective	If the hose has a leak, please contact customer service via <a href="mailto:aero@salinovatis.com">aero@salinovatis.com</a>
""	Too little liquid in the drip tray	Disconnect the power supply immediately! Fill the drip tray with brine or clear water and check the pump operation. The pump may have been damaged during the draught.
""	Pump defective	If the pump appears clogged or makes unusual noises, try to clean the pump thoroughly as described in "Maintenance and cleaning" and check the pump operation again. If the pump still does not draw brine, contact <a href="mailto:aero@salinovatis.com">aero@salinovatis.com</a> for information on spare parts and warranty.
""	Drip channels blocked	Clean the structure tower as described under "Maintenance and cleaning".

		If brine still does not flow, use a pipe cleaner or carefully insert a blunt, narrow object into the channels to locate and remove any blockages.
Pump does not work	Check power connection	Wenn keine Pumpentätigkeit festzustellen ist, überprüfen Sie, ob USB-Anschlussstelle und Netzteil fest verbunden sind. Überprüfen Sie ebenfalls, ob die Netzsteckdose über Strom verfügt und das Netzteil sicher eingesteckt ist. Überprüfen Sie mit einem adäquaten anderen Gerät, z.B. einem Mobiltelefon-Ladekabel, ob das Netzteil funktionstüchtig ist, oder ob an der Steckdose möglicherweise ein Defekt vorliegt. Wenden Sie sich an den Kundenservice, wenn eine Ersatzpumpe benötigt wird.
""	Cable defective	In the event of a cable break, please contact <a href="mailto:aero@salinovatis.com">aero@salinovatis.com</a> to order a replacement part or to find out about your options under the warranty in the event of improper handling.
Heavy foaming	Verunreinigung der Sole	A high lime or mineral content can cause foaming in the drip tray. Substances such as soap, oil or similar can also interfere with the brine. Mix a new brine and check that the Mini-Saline is working properly. If foaming continues to occur, SalinoVatis should be completely cleaned (see "Maintenance and cleaning"). If foaming continues, unsuitable salt may be used. You can find suitable salt for SalinoVatis at <a href="http://www.salino.eu">www.salino.eu</a>

## Disposal

Please dispose of the SalinoVatis properly to minimize environmental damage.

Remove the pump together with the cable and the external mains plug for disposal. These fall under the regulations for the disposal of old electrical appliances. Take the electronic parts of the Mini Saline to a designated recycling center. They do not belong in household waste.

All other components can be disposed of in the recycling garbage can or in residual waste.

## Technical data sheet

Device name	SalinoVatis
Power connection	USB
Voltage USB	5V
Pump output	1,5W
Mains voltage (external mains plug)	100 – 240V ~ 50- 60Hz
Max. delivery rate (liters/hour)	110
Max. filling quantity	2l brine
Room size	10- 15m <sup>2</sup> , for larger rooms the function is reduced accordingly
Microclimate radius	~ 0,5 – 2m
Empty weight	800g
Dimensions	26 (b) x 18 (t) x 24 (h) [cm]
Material	PLA
Temperature range	Betrieb: 5 – 35°C Lagerung und Transport: -25- +50°C
Air humidity	Operation: 30- 75% Storage and transportation: max. 90% Exceeding the ambient humidity will not damage SalinoVatis, but will reduce the effect of salt water evaporation.
Barometric pressure	Operation: up to 2000 m altitude, 70- 106 KPa Storage and transportation: 70- 106 KPa