

Langham Poll Dorsets



Est. 2010

MV Accredited

Flock No. T87

Contact: emmacrosfield@btinternet.com Tel no: 07400571701

Lower Langham Farm, Gillingham, Dorset, SP85NT

THE FLOCK

Whatever time of year you decide to plan your lambing , make sure your ewes are not excessively fat prior to tugging. This can be achieved by intensifying the ewes onto a smaller acreage, condition score, particularly the older and less fit ewes and adjust nutrition accordingly. This will enable you to flush the ewes prior to tugging efficiently.

The rams are good workers and are particularly well suited for early covering if used in a commercial flock. Many Dorset ewes will have a slightly shorter gestation period, averaging about 145 days and the first cross females will often inherit the frequent lambing ability.

Concentrate feeding prior to lambing need normally be kept to a minimum at most times of the year. If winter lambing is decided upon then some additional feeding will be necessary either in the form of a high energy feed block, as the grass deteriorates, and then a suitable concentrated cereal feed, up to 70 gms (1.5 lbs) per day, plus roughage or roots prior to lambing.

SIRES

“The ram is more than half of the flock”, so the old phrase goes, and it is certainly as true today, if not more so in these times of tight profit margins.

Buy the best rams you can afford and look after them throughout the year. Make sure they are regularly drenched, vaccinated and their feet trimmed. Exercise is always important and do not let them become over fat.

Well before tupping check each ram over carefully and a few weeks before use increase their nutrition.

EWES

The same rules apply for the care of ewes as that of rams, and do not let them get over fat at any time particularly around lambing and weaning the lambs.

LAMBING

The Dorset Horn and Poll Dorset ewe is an excellent mother and has good milking ability. Flock Masters may need to assist, as with any other breed, hoggets lambing for the first time. Hygiene at lambing time is of paramount importance whether lambing indoors or out, and good record keeping will always assist you to make your flock as profitable and trouble free as possible.

FEEDING AFTER LAMBING

Traditionally root crop feeding or folding, with a separate creep for the lambs has been practised but more recently with the introduction of precision drilling and pre-emergent sprays etc. many incorporate main root crops like swedes or kales, together with later sowings of stubble turnips and the like. This can lend itself to various arable systems, e.g. early potatoes, winter wheat and barley breaks.

Flocks may also be maintained entirely on grass leys, the ewes utilising quality silage or hay during lactation with some concentrates being offered in severe weather conditions or if available feed lacks quality. As with traditional methods lambs should also be given creep feed.

FREQUENT LAMBING SYSTEMS

If frequent lambing is to be practised, a high level of management and shepherding is required, but high lambing percentages and outputs are achieved annually and the income per ewe and acreage is rewarding.

It has to be asked initially how this will fit it with ones other farming enterprises and the labour available. The aim is for lambing to occur at eight month intervals.

OPTIONS

1. If run on **natural lines**, with suggested lambings in say November, March and July, with tupping being restricted to 5 weeks maximum at each time, a strict discipline by the Flock Master is required to take rams out at the end thus preventing lambing becoming continuous.

A teaser ram running with the ewes for 2/3 weeks prior to tupping can be advantageous as the lactating ewes will have lambs running at foot. The percentage of ewes which conceive may vary at times. Factors which may result in lower conception rates are a low level of nutrition at tupping, or adverse weather conditions, for example, drought.

Body scoring of ewes near to these tupping dates, at whatever time of year, can be beneficial, but should be done in time to make whatever adjustments necessary through feeding for optimal conception. A rising of condition is ideal. It is most vital that rams are in prime covering condition.

It must also be considered that this system demands additional enclosures in order to keep the level of management at its peak with two ages of ewes and lambs in groups. Female flock

2.

Or
ge
ew



ing
by
3.
of
ing

Sheep housing may be practised more with this system, December/January born lambs would be lambed inside, then early weaned and fattened fast for the Easter trade, as may the previous batch born in August/September. The ewes too may be housed or yarded for a large part of the year, enabling a rigid profile of diet and management to be maintained. High profit margins are being achieved on such systems at these.

For further information contact the Breed Secretary.

BLACKHILL FLOCK

DORSET

The UK's largest
of pedigree P



out us

MV Accredited

Signet Recorded

Founder Member of
Dorset Lamb Scheme



Joe Dufosse: 07525 208053

Jim Dufosse: jim@jdufosse.f9.co.uk



www.blackhillorganiclivestock.uk



www.greatgarlandhayes.com

FABBL and MV Accredited



Pilgrim's Dorset Lamb Scheme

Looking for a market for your Dorset breed lambs?

We purchase 'New Season' Dorset breed lamb from December to May each year.




We offer longer-term pricing with different pricing options that all reward quality.

Our producer group has been well established for over 20 years, forming a successful supply chain serving a large retailer.

This includes crossbred Dorset lambs – only the sire or dam must be pedigree registered Dorset.

Please contact us on 01834 869043 for further information.

VISITORS AND
ENQUIRIES
WELCOME

ROB HARVEY
LITTLE BRAISEWORTH, TANNINGTON, SUFFOLK
07780665070 

Ashvale Flock

"Get the females right, and the rams are sure to follow"



Female & Overall Champion at the Scottish Breeders Club Show & Sale 2023

Current Stock Rams

- Ashvale Bruno
- Mainevalley Casanova
- Ballyhamage Del Piero
- Ballytaggart Dakota
- Downkillybegs Evolution
- Beechmount Edwardo



Male Champion & Reserve Overall Champion at the NI Club Swatragh Show & Sale

FLOCK COMPETITION

1st NI Large Flock
2nd UK Large Flock

1st NI Group of Ewe Lambs
2nd UK Group of Ewe Lambs

2nd NI Group of Stock Rams



Female & Reserve Overall Champion at the NI Club Omagh Show & Sale



Female & Reserve Overall Champion at the NI Club Premier Show & Sale

Caroline McKeown
801 Antrim Road
Templepatrick
Ballyclare
Co Antrim
BT39 0AN

07983 500160

ashvalepedigrees@gmail.com

λ62

Decades devoted to improving and promoting the Poll Dorset in the UK

Devon breeder David Rossiter has devoted decades to improving and promoting the Poll Dorset in the UK - and, in return, the Huish flock has proved to be the backbone of the family farming business.

When David first began working at home, Burton Farm, Galmpton, near the coast at Kingsbridge, he was given the task of running the flock of purebred native breed longwool sheep which were crossed with the Suffolk.

Not satisfied with the performance, he bought a couple of pens of Dorset ewe lambs, thinking he would cross them and that commercial ewes were the way forward.

“We bred some pure and they produced three ram lambs which each sold for much more than the stock sire had cost and we found the pure bred Dorsets proved to be much more profitable,” said David.



Around that time David won a YFC travel scholarship to New Zealand and he spent eight months in the country and Australia working on farms where he quickly saw what made their Poll Dorsets producing a heavier carcass the number one terminal sire and this decided him on the future of the flock at Burton Farm.

Inspired by the late Poll Dorset breeder David Mathews from Bridgend, South Wales, who imported genetics from Australia and New Zealand to improve carcass quality and who gave great support to next generation breeders, David quickly became an advocate of performance recording before Signet began but he has always maintained that the sheep has to function correctly.

The flock has won the Dorset association's annual flock competition and championships around the country.

Now with one of his landlords set to adopt a natural regeneration policy on 300 tenanted acres of the 1,100 acres David and his son Rich farm, they will rely on the Dorsets and another new sheep enterprise to help weather the changes.

In the following five decades of recording, David has seen big increases in lamb

growth rates, carcass conformation and maternal performance – a situation he attributes directly to his breeding programme. Poll Dorset carcass weights have increased from 16-18kg to 20-22kg without excessive fat cover.



They farm predominantly grazing ground, 331 acres are owned and the remainder are rented from seven different landlords. They grow 250 acres of winter and spring barley, 20 acres of maize for the sheep and 20 acres of vetch and oats for feeding the rams which include Aberblack shearing rams bred on a contract with Innovis.

Until now the farm has run a flock of 520 Poll Dorsets lambing in September-October or in January, 200 Suffolk-Aberblack January lambing ewes and 400 Exlanas, a wool-shedding sheep breed composite which includes genetics from UK breeds and easy care sheep that David and nine other breeders have developed over the last 15 years. A further 600 ewe lambs are overwintered as replacements or for sale the following year.



The 300 acres of “store sheep land” as David describes it along the coastal strip designated for natural regeneration will not allow sheep to be grazed on it from April 1 to August 1.

“The sheep enterprises will have to be altered to cope with the reduced grazing and we will use the advantages of the Poll Dorset in the new management system. We have several different ideas. The farm now supports Rich and his wife Alice and we have four staff involved with the livestock and arable contracting business and we don’t want to make anyone redundant.

“The Poll Dorset will come in to its own with the natural regeneration and it will give us the flexibility to lamb more of them, increasing the flock to 700 ewes in the

next two years. We will sell some of the Exlana spring lambing ewes and we will replace them with Poll Dorsets to lamb in September-October.

“We have been putting the Poll Dorset on to the Exlana which we don't want to breed pure. Now we are looking at the Australian White and establishing a flock with imported embryos. They are A-seasonal breeders which if we crossed it with the Poll Dorset we would get a wool shedder in three generations.



“Dorsets have been helping me to survive through all kinds of difficulties. In 2007 TB took the farm's dairy herd and that was when the sheep enterprise really started to be put into gear.

Lambing in September is restricted to a tight three to four week period from September 10 to maintain the seasonal capability of the flock. Dorsets which have missed the autumn lambing go on to lamb in the three-week January lambing. The Exlanas have lambed over four to five weeks in March.

Poll Dorset lambs are sold as new season lamb from 12 weeks old on contract to Waitrose, finished on crop or grass with creep. Rams are left entire with the selection for rams retained for breeding carried out at weaning when they can also ascertain which ewes have milked well.

The aim is for a 22kg carcass for the Waitrose branded scheme, set up thanks largely to the work of Wiltshire Dorset breeder Jim Dufosse. Rich and Alice are developing another enterprise - Huish Meat - in which they are marketing new season lamb from the heavier weight lamb carcasses, selling chilled, boxed lamb all over the country from January to September. The venture started in 2020 and includes an on-farm cutting room.

The longer term plan is to market the niche Australian White lamb direct. The Australian White meat is likened to Wagyu beef with a different texture and flavour to other lamb breeds and with a lower melting point.

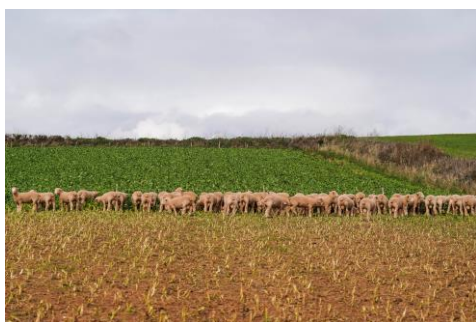


Performance recording has provided a solid foundation for flock improvement and as an aid to marketing. Sales growth from the Huish flocks has also increased as a result.

“If you can improve volume, you don’t have to cane customers on price – if you do that they won’t come back. It has to be profitable for us but also for our buyers,” he says.

“Making breeding records available to our customers means they can find the right sheep for their system, whether that’s selecting rams to accelerate lamb growth rates, improve carcass conformation or whatever trait they are interested in.”

Rams are selected initially on conformation by the Rossiters. Last year’s consignment of seven rams entered in the May Fair at Exeter on May 2 and 3 at Kivells Exeter Livestock Centre were the first progeny from semen from two rams from the long-established elite Gooramma Poll Dorset Stud in New South Wales, Australia which are among last season’s lamb crop.



Huish retains the highest average price for a pen of ram lambs sold at the May Fair.

While the May Fair is the flock’s foremost live marketing platform, the flock supports the Centurion Sale in April and sheep are sold off the farm at the end of the month. Huish produced the Centurion ram of the year in 2022 - the breed’s Centurion Group is to promote performance recording.

Up to 60 rams are sold each year, including off the farm, with social media helping to promote the flock and its genetics. The Rossiters held their own on-farm sale of 120 females last summer with a few more sold privately. The next on-farm sale is scheduled for August 2026, taking into account the re-structuring of the flocks.

Sheep are also sold for export from the Huish flocks which are scrapie monitored and this makes exporting an easier process. Recently, there have been enquiries for Dorsets males from Latvia and for Exlanas from Austria.



David says the Dorset breed continues to go from strength to strength. Two decades ago there were just over 200 breeders - that has increased to more than 500 flocks all over the UK and Ireland.

“It’s the Dorset’s flexibility to lamb at any time to suit the breeder, either as a hobby flock to fit in with a career or to work around other activities on the farm such as crop work,” said David, a former long-standing association council member, being both chairman and president over the last four decades.

He said the breed is easily managed and lambled because of the pelvic shape of the modern Poll Dorset. The sheep thrive on poorer ground and winter grazing without supplementary feed.

“The Dorset breed is not name-driven, unlike other breeds where some flocks don’t stand a chance in achieving good prices. If you breed quality Poll Dorset stock and the sheep and the genetics are right, other breeders will look at them irrespective of prefix and they will give you a good return. It is also definitely a friendly society with plenty of help offered.”

MV THE BUCKENHILL Flock P85

Louise Crowther
The Grange,
Buckenhill,
Bromyard,
Herefordshire,
HR7 4PG

Lou-07976877978
Matt-07909793455
goatgrange@aol.com



BUCKENHILL DOUGIE
Supreme Interbreed
Champion
Tenbury Show



01970 832 244

rolbeth2000@yahoo.co.uk



 Dolcettwr Poll Dorsets

Flock No. K71

Est. 1993

MV Acc.



or Sale

Flock No.: ZA15

Horns Est. 2017

Polls Est. 2022



MV Accredited

Martin, Wendy & Daniel Preece
Stoke Prior, Leominster, Herefordshire
Tel: 07971 632 808
email: wpreece13@gmail.com

WELSH DORSET CLUB



**Annual Show & Sale in Llandovery Market
(Clee, Tompkinson & Francis)**

PADDOCK LEACH POLL DORSETS

Reared on the West Pennine Moors
Signet Recorded & MV Accredited
September lambing

All types of stock for sale :

**Progeny from Poorton Detonator
Paddock Leach Flycatcher**

Contact Stuart
☎ 07812 210701

email: stuartalderson@rocketmail.com

*Paddock Leach Farm
Ainsworth Bolton BL2 5PX*



Skipton Show & Sale - Saturday

3rd August

2024 Club Shows - Todmorden -

Saturday 16th June

Great Yorkshire Show - 9th - 12th

July



Northern Dorset Breeders Club



For more information

please contact

Mr A Birch - Chairman

- 07595618300

Mr S Alderson - Secretary

- 07812210701



BURHOS FLOCK

Dorset Horns & Poll Dorsets

Quality Dorsets are available throughout the year

A ♠

"THREE OF A KIND"

PRODUCTION SALE – 27th JULY



We Will Have In Lamb Shearling Ewes, Ewe Lambs & Select Rams For Sale In Conjunction With The "Byeways", "Sandy Lane" And "Poorton" Flocks.



Rams And Females Available
Our Proven Stock Rams That Continue To Produce 1st Class Progeny Have Been Joined By "Richhill Flint", "Mountdale Fury", "Islaharnan Fernando" And Our Homebred "Burhos Edition" Who Has Bred Exceptionally Well In His First Full Season.

producing Stock You Can Count On



"Richhill Flint" - Reserve Champion Purchased At MayFair '23, Look Out For Some Of His Progeny And Ewes In-Lamb To Him At The Sales This Year.



Consistent quality and type (Best pair of shearlings at MayFair 3 years following)

Matt & Adam Care
Lower Lydcott Farm, Widegates, Looe, CORNWALL PL13 1QJ
email – aljcare@hofmail.co.uk Tel: 01503 240681 Mob: 07875 558489



Find us on:
facebook.

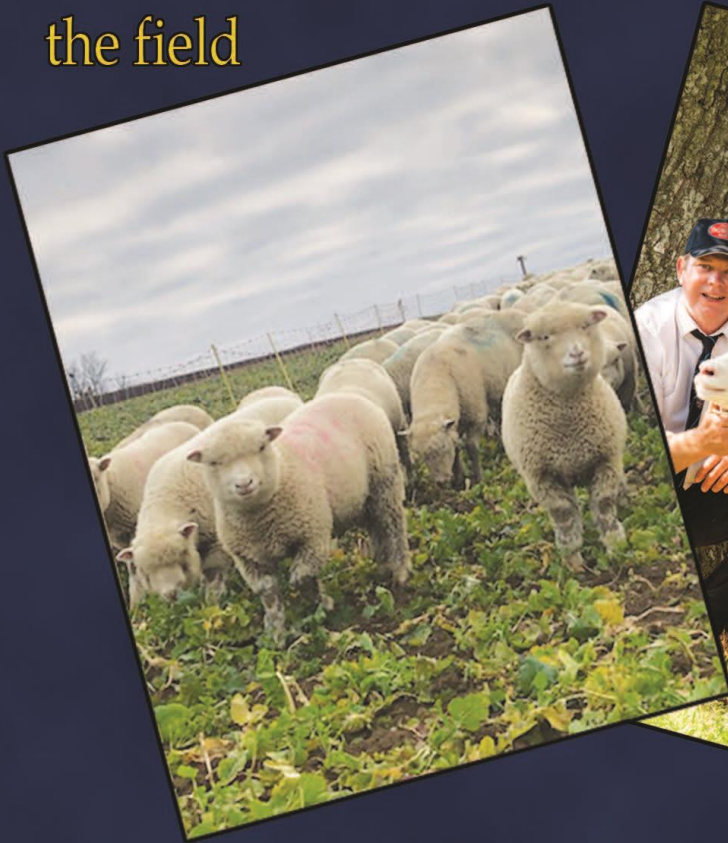
SHERBORNE POLL DORSETS

EST. 1965

Bred to thrive in...

the field

& the show ring



www.sherbornepolldorsets.com



Rob Hole:
07813 975050

Hill Street Farm,
Holwell,
Sherborne,
DT9 5LJ

Richard Hole:
01963 23263

SANDY LANE

🏆 CHAMPION FLOCK 2023 🏆

DORSET HORN & POLL DORSETS
N78



SKIPTON CHAMPION 2023



CARLISLE CHAMPION 2023

'THREE OF A KIND' PRODUCTION SALE
SATURDAY 27TH JULY 2024

IN CONJUNCTION WITH THE BURHOS, BYEWAYS AND POORTON FLOCKS,
THE SANDY LANE FLOCK WILL HAVE ON OFFER, SPECIALLY SELECTED IN LAMB
SHEARLING EWES, EWE LAMBS AND RAMS.

SANDY LANE
EVOLUTION

TOP PRICE SHEARLING
RAM MAY FAIR 2023



SAM DRIVER
SAM.DRIVER1@BTINTERNET.COM
FACEBOOK - SANDY LANE PEDIGREE LIVESTOCK

Strathbogie Poll

Est.2005

Dorsets

MV Acc

Flock S26

Visitors Welcome

Aldunie, Cabrach, AB54 4HY



Pedigree sheep working in a commercial system

Embleton Poll Dorsets

Matthew Stonehouse
Tel: 01659 67346
Mobile: 07769815365

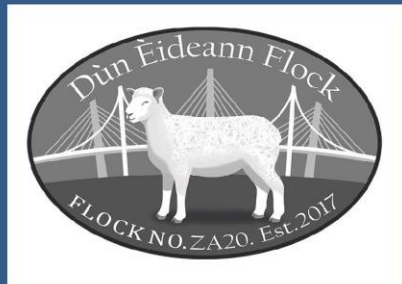
A Flock from the hills of the Southern-Uplands. Raised on grass between 750 and 1800ft.

Niviston Farm
Sanguhar
Dumfriesshire
DG4 6NS
Email: niviston@outlook.com

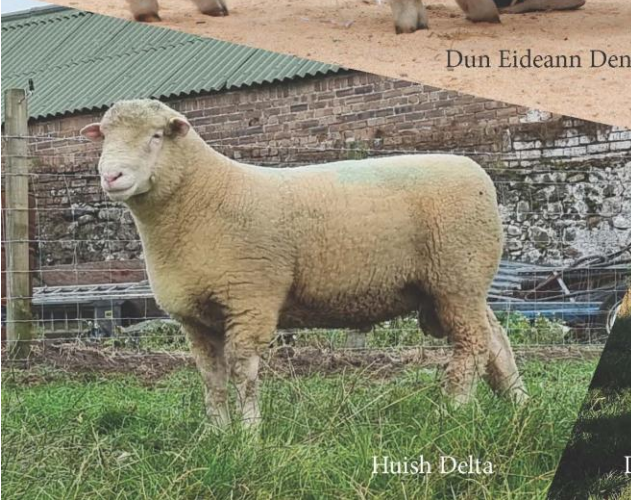
Est 2012
MV Accredited



Dun Eideann Denzil



MV Accredited
Denis and Declan Rankine
T: 07852 724440
E: denisrankine63@gmail.com



Huish Delta



Dun Eideann Earthquake and Eric by Ballytaggart Digger

SOUTH-WIN POLL DORSETS

N.



B



www.nidorsetclub.co.uk

2024 Club dates and Events

23rd March	Dorset Diamonds – Ballymena Mart
25th May	Judging Day & New Breeders' Workshop
29th July	52nd Annual Premier Show & Sale – Ballymena Mart
9th August	9th Annual Omagh Show & Sale – Beatties Mart
23rd August	3rd Annual Swatragh Show & Sale – Swatragh Mart
14th October	35th Annual Autumn Show & Sale – Ballymena Mart

Further details available from:

Chairman	James Robson	07518 927240
Vice Chairman	Samuel Caldwell	07880 783250
Secretary	William Carson	07841 746705

PREMIUM QUALITY



DEBEN

POLL DORSETS

MV Accredited & Signet Recorded



Flock no. U39

Mr & Mrs Tim Pratt, Hamble House, Suffolk
farm@wantisden.co.uk 07970 240855

KIVELLS

Established 1885

www.kivells.com



Proud Auctioneers of the Poll Dorset & Dorset Horn Sheep Breeders Association

2024 MAY FAIR

EXETER LIVESTOCK CENTRE

Show Day - Tuesday 7th May

Sale Day - Wednesday 8th May

Farms, Property, Land Agency,
Smallholdings, Land, Country &
Residential Property Sales

Chartered Surveyors & Rural Professionals
Team of Experienced Surveyors

Livestock
Auctioneers
& Valuers

Operating
at three
Livestock
Markets

Exeter
01392 251261

Holsworthy
01409 253275

Hallworthy
01840 261261

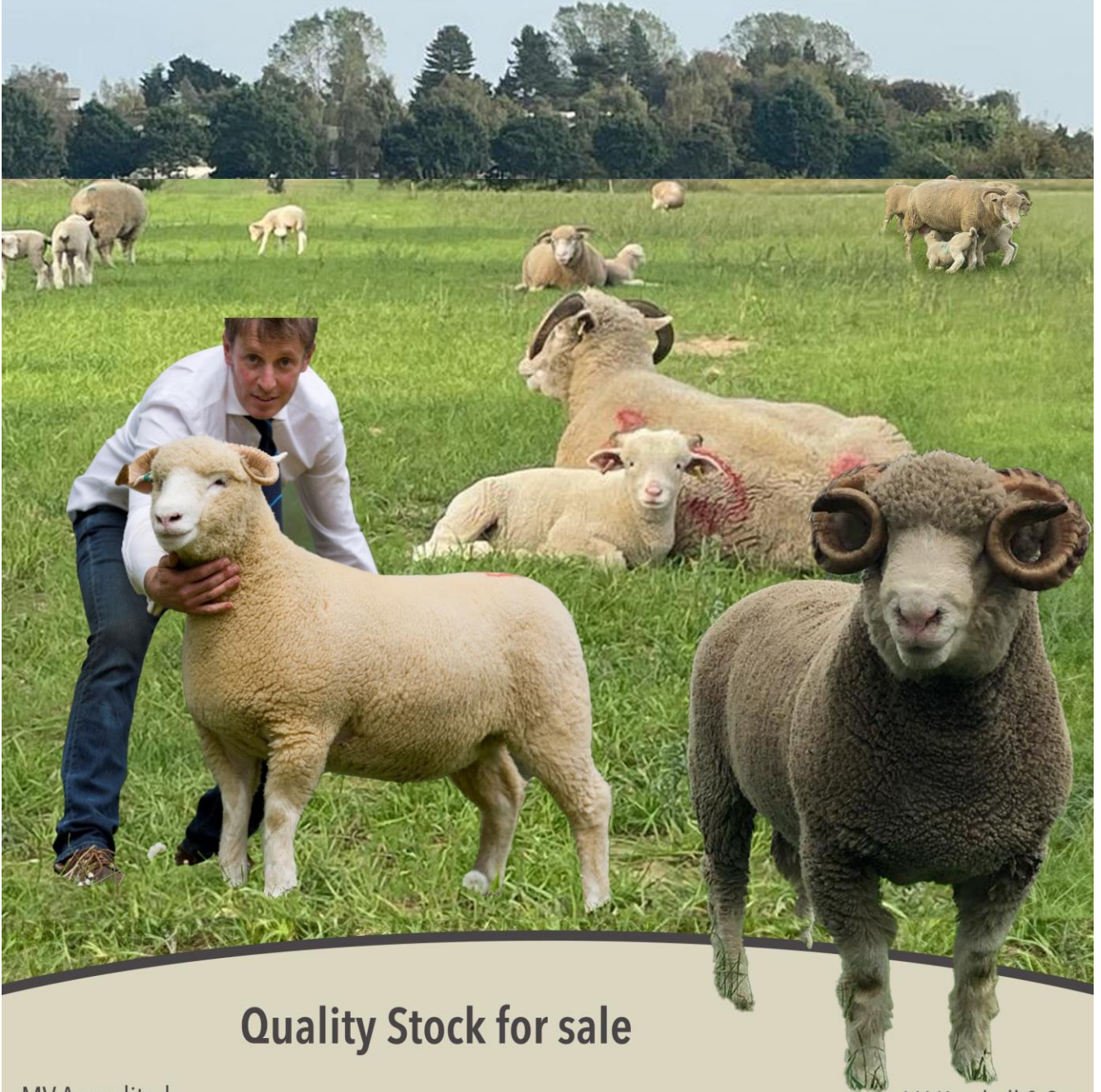
Kivells...

*Ahead of
the field!*



WANTISDEN
HALL FARMS

Staverton Dorset Horns



Quality Stock for sale

MV Accredited
Signet Recorded
Flock Number - W46

For enquiries please contact - Tim Pratt
07970 240855 / farm@wantisden.co.uk

J H Kemball & Son
Wantisden Hall Farms
Woodbridge, Suffolk IP12 3PG

R&D Rossiter
Exlana | Poll Dorset | Suffolk



Flock No.
A26

UK0364432

NENE FLOCK

Horn

Sandy Lane Driver

Polls

Ballytaggart Forefront

Byeways Fergie

Ashvale Fantasy

Pembroke Flapjack

Hilltop Fivestar

Richhill Freddie



(Pictured) **Hilltop Fivestar**
Bought for 3000gns



- ✓ Pedigree males and females will be available at society sales and at home
- ✓ Females for embryo transfer recipients
- ✓ Teasers

Also breeders of pedigree MV accredited Oxford Down and Hampshire Down.

Along with Pedigree Hi Health Scheme Aberdeen Angus, Beef Shorthorn, Hereford and South Devon cattle. Quality bulls available.

R.G Elliott & Son

Navigation Farm, Longdown Lane, Willoughby, Warwickshire CV23 8AG

Tom; 07508 624376



Looking for higher profits from your flock?

Then look at our sheep which are easy to handle, versatile, and not reliant on a high level of additional nutrition. Tap into our genetics where we use high index rams with myomax genes. Our Pasture based stock have the capability to lamb frequently producing carcasses grading E/U 3L.

Our Poll Dorsets thrive on a pasture-based diet, lamb frequently and benefit from us using high index rams with top genetics

Contact us early for Breeding Stock from our Lake District farm
Mobile: Brian 07736 596461 or Cath 07736 596462
Email thornbank.gosforth@gmail.com

**Pedigree
Poll Dorset
Flock**
Est 2004



BYEWAYS

MV
ACCREDITED

POLL DORSETS

JOE LARDER

01934 852176 OR 07824333995
SANDFORD, SOMERSET

Enquiries Welcome



CENTURION "RAM OF THE YEAR & SELECT SALE"



EXETER LIVESTOCK
CENTRE

5TH APRIL 2024

*THE SALE PROVIDES THE OPPORTUNITY TO
ACQUIRE PERFORMANCE RECORDED DORSET
HORN & POLL DORSET SHEEP*

***Signet recorded? The group
welcomes new members.***

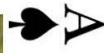


Signet 
BREEDING SERVICES

Three of a Kind Production Sale



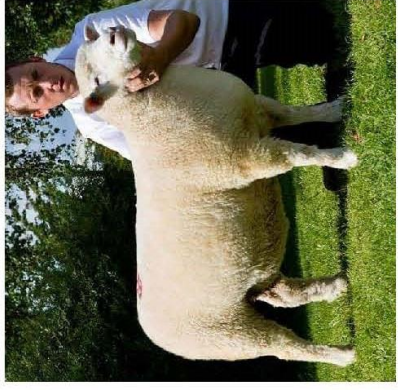
A ♠ The Burhos Flock
Matt & Adam Care



A ♦ The Sandy Lane Flock
Sam Driver



A ♣ The Byeways Flock
Joe Larder



A ♥ Guest Consignment
Francis Fooks



These Dorset's are no Gamble

Saturday 27th July 2024

Waldon Acres, Byeways Lane, Sandford, Somerset, BS25 5PG 10 minutes from Bristol Airport



DORSET HORNS & POLL DORSETS

TUNDISH

EST. 2007



Marren D318
Twice Reserve Breed Champion
Reserve Female Champion

S69 F419
Reserve Breed Champion
Reserve Male Champion



Tundish FancyThat
Breed Champion · Reserve Champion
Rare Breed Champion

Byeways Eric
Breed Champion
Reserve Breed Champion

MISS JASMINE JONES

FLAXLEY, GLOUCESTERSHIRE

MV ACC.

TEL : 07774965243

Horns Est 1998 Richhill Polls Est 2007



Five Star, private sale to Hydes, 2023



Fraser, May Fair Champion, 2023

Ben Lamb 07703 649112

Richhilldorsets1@gmail.com



BAMBURGH POLL DORSETS

BORN AND BRED IN
NORTH NORTHUMBERLAND

Est 2008

Flock No T51

MV ACCREDITED AND SCRAPIE MON NEG

Christina Johnson, Fowberry Farm, Bamburgh, NE69 7AT



BREED DIRECTORY

Agrifactors
Mr C Davis
Streetfield Farm
Cade Street
Heathfield, Sussex
TN21 9BS

(Streetfield)

Mrs E Crosfield
Lower Langham Farm
Gillingham, Dorset
SP8 5NT

(Langham)

Tel: 07400 571701
e-mail: emmacrosfield@btinternet.com

Tel: 01435 863964
e-mail: chris@agrifactors.co.uk
www.agrifactors.co.uk

Mr S Alderson (Paddock Leach)
Paddock Leach Farm
Cockey Moor Road
Ainsworth
Bolton, Lancashire
BL2 5PX

Tel: 07812 210701
e-mail: stuartalderson@rocketmail.com

P W Baker & Son (Chinnoek)
Eastfield Farm
East Chinnoek
Yeovil, Somerset
BA22 9EB

Tel: 01935 863160
e-mail: philip.eastfield@googlemail.com

M & A Care (Burhos)
Lower Lydcott Farm
Widegates
Looe, Cornwall
PL13 1QJ

Tel: 01503 240681/07875 558489
e-mail: aljcare@hotmail.co.uk

Centurion

Secretary: Mrs A James

Tel: 07525 743975
e-mail: southbankfarming@gmail.com

Miss L Crowther (Buckenhill)
The Grange
Buckenhill
Bromyard, Herefordshire
HR7 4PG

Tel: 07976 877978 (Lou)
Tel: 07909 793455 (Matt)
e-mail: goatgrange@aol.com

Mr S Driver (Sandy Lane)
9 Sandy Lane
Chisworth
Glossop, Derbyshire
SK13 5RZ

Tel: 07811 141860
e-mail: sam.driver1@btinternet.com
www.sandylanepedigrees.co.uk

Messrs. J & J Dufosee (Blackhill)
Farnicombe Farm
Upton Scudamore
Warminster, Wilts
BA12 0AD

Tel: 07525 208053 (Joe)
Tel: 07977 121169 (Jim)
e-mail: jim@jdufosee.f9.co.uk
www.blackhillorganiclivestock.uk

Mr J Durrant (Hydes)
Hydes Farming
The Hydes, Thaxted
Dunmow, Essex
CM6 3QB

Tel: 07841 418823
e-mail: jeremy@ewdaviesfarms.co.uk

BREED DIRECTORY

R G Ellitt & Son (Nene)
Navigation Farm
Longdown Lane
Willoughby, Warwickshire
CV23 8AG

Tel: 07508 624376 (Tom)

Mr R Fitton (Dynamite)

Griffiths & Davies (Dolclettwr)
Dolclettwr Hall
Taliesin
Machynlleth
Powys, Wales
SY20 8PN

Tel: 01970 832244
e-mail: rolbeth2000@yahoo.co.uk

Ryders Farm
Manchester Road, Kearsley
Bolton, Lancashire
BL4 8RU

Tel: 07971 272764

e-mail: richard.fitton72@icloud.com

Fooks Bros. (Poorton)

Manor Farm
North Poorton
Bridport, Dorset
DT6 3TH

Tel: 01308 485509

e-mail: francis.fooks@btinternet.com

W L French (Wilsey)

Higher Scarsick
Treneglos
Launceston, Cornwall
PL15 8UH

Tel: 07870 981118

e-mail: heatherfrench@btconnect.com

Mrs S Gray (Burley)

Goit Stock Farm
Eastfield Lane
Burley in Wharfedale
Ilkley, Yorkshire
LS29 7QU

Tel: 07717 623052

e-mail: polldorsets@gmail.com

Mr R Harvey (Braiseworth)

Little Braiseworth
Tannington
Woodbridge, Suffolk
IP13 7LU

Tel: 07780 665070

e-mail: rharvey88@gmail.com

R & R Hole (Sherborne)

Hill Street Farm
Holwell
Sherborne, Dorset
DT9 5LJ

Tel: 07813 975050 (Rob)

Tel: 01963 23263 (Richard)

e-mail: robhole7@gmail.com

www.sherbornepolldorsets.com

Miss C Johnson (Bamburgh)

Fowberry Farm
Bamburgh, Northumberland
NE69 7AT

Tel: 07850 881992

e-mail: christinajohnson_96@msn.com

Miss J Jones (Tundish)

3 Sutton Road
Soudley
Cinderford, Gloucestershire
GL14 2TX

Tel: 07774 965243

e-mail: jazzruby22@hotmail.co.uk

BREED DIRECTORY

J H Kemball & Son (Staverton)

Wantisden Hall Farms
Wantisden
Woodbridge, Suffolk
IP12 3PG

Tel: c/o Tim Pratt 07970 240855

e-mail: farm@wantisden.co.uk

www.wantisden.co.uk

A & C Kingdon (Polgreen)

Mr J Larder (Byeways)

Waldon Acres
Byeways Lane
Sandford, Somerset
BS25 5PG

Tel: 01934 852176/07824 333995

e-mail: joe.larder@cjlconstruction.com

J B May & Son (Newtoncoombe)

Coombe Farm

Kingdon's Farm
Gummows Shop, Summercourt
Newquay, Cornwall
TR8 4PP

Tel: 01872 510636

Kivells Auctioneers

Exeter Livestock Centre
Matford Park Road
Exeter, Devon
EX2 8FD

Tel: 01392 251261

e-mail: livestock@kivells.com

www.kivells.com

Mr B Lamb (Richhill)

79 Sleepy Valley
Richhill
County Armagh, Northern Ireland
BT61 9LH

Tel: 07703 649112

e-mail: richhilldorsets1@gmail.com

G & A Langford (Blackdown)

Great Garlandhayes Farm
Clayhidon
Cullompton, Devon
EX15 3TT

Tel: 01823 680086

e-mail: greatgarlandhayes@gmail.com

www.greatgarlandhayes.com

Sweets House
Bodmin, Cornwall
PL30 5AL

Tel: 01208 872417/07773 191633

e-mail: gkeithmay@hailmail.net

www.newtoncoombe.co.uk

McCartneys Auctioneers

The Heath Meadow
Nunnery Way
Worcester, Worcestershire
WR4 0SQ

Tel: 01905 769770

e-mail: james.amphlett@mccartneys.co.uk

e-mail: amy.jones@mccartneys.co.uk

www.mccartneys.co.uk

Miss C McKeown (Ashvale)

801 Antrim Road
Templepatrick
Ballyclare
County Antrim, Northern Ireland
BT39 0AN

Tel: 07983 500160

e-mail: ashvalepedigrees@gmail.com

Mr B Muncaster & (Thornbank)

Mrs C Pritt-Muncaster
Thornbank
Gosforth
Seascale, Cumbria
CA20 1HT

Tel: 07736 596461 (Brian)

Tel: 07736 596462 (Cath)

e-mail: thornbank.gosforth@gmail.com

BREED DIRECTORY

Northern Dorset Breeders' Club

Chairman: Mr A Birch (07595 618300)
Secretary: Mr S Alderson (07812 210701)

e-mail: alex-in-nz@hotmail.co.uk

e-mail: stuartalderson@rocketmail.com

www.northerndorsetbreedersclub.co.uk

Northern Ireland Club

Chairman: Mr J Robson (07518 927240)
Secretary: Mr W Carson (07841746705)

Mr G Riby (Stonehills)

Stonehills
Fraisthorpe
Bridlington, Yorkshire
YO15 3QR

Tel: 07932 176626

e-mail: geoffriby@btconnect.com

R & D Rossiter (Huish)

Burton Farm
Galampton
Kingsbridge, Devon

e-mail: williamdownkillybegs@yahoo.co.uk
www.nidorsetclub.co.uk

Mr & Mrs T Pratt (Deben)
Hamble House
Marlesford Lane
Hacheston
Woodbridge, Suffolk
IP13 0DP

Tel: 07970 240855
e-mail: farm@wantisden.co.uk

Mr & Mrs M Preece (Stoke Prior)
& Master D Preece
2 The Slough
Stoke Prior
Leominster, Herefordshire
HR6 0NB

Tel: 07971 632808
e-mail: wprece13@gmail.com

D & D Rankine (Dun Eideann)
18 Kenilworth Terrace
Lochore
Lochgelly
Fife, Scotland
KY5 8EJ

Tel: 07852 724440
e-mail: denisrankine63@gmail.com

TQ7 3EY

Tel: 01548 561210 (David)
Tel: 07549 938198 (Richard)
e-mail: rossiterburton@gmail.com

Scottish Dorset Breeders' Club

Chairman: Mr D Rankine (07852 724440)
Secretary: Mrs M Sheed (07510 277110)

e-mail: scottish.dorsets@gmail.com
www.scottish-dorsets.com

Mrs M Sheed (Strathbogie)
Aldunie
Cabrach, Huntly
Aberdeenshire, Scotland
AB54 4HY

Tel: 07510 277110
e-mail: marianne@jsheed.co.uk

Mr M Stonehouse (Embleton)
Niviston Farm
Kirkconnel
Sanquhar
Dumfriesshire, Scotland
DG4 6NS

Tel: 01659 67346/07769 815365
e-mail: niviston@outlook.com

BREED DIRECTORY

D J Thomas & Son (South-Win)
Treguddick Farm
South Petherwin
Launceston, Cornwall
PL15 7JN

Tel: 01566 86201/86770
Tel: 07977 058184
e-mail: treguddick@aol.com

Pilgrims UK Lamb/Waitrose & Partners

Tel: 01834 869043

Mrs M Walker (Dupin)

Barwinnock Farm
Whauphill
Newton Stewart, Scotland
DG8 9PX

Tel: 07712 618282/01988 700931
e-mail: jamie_maud@hotmail.com

Welsh Dorset Club

Chairman: Mr Iolo Davies (07817 982025)
Secretary: Sian Downes (07969 271437)

GUIDE TO COSTS

(These costs are correct at time of printing, but may be subject to alteration by Council at any future date).

Item	Cost
Annual Subscription	£65.00
Annual Subscription (Junior, 16 and under)	£10.00
Associate Membership	£30.00 (to include Flock Book)
Ewe Registration	Grassroots: £1.50/lamb (under 12 months) (As from 1 September, 2024 - £2.00 per lamb) Grassroots: £3.50/female (12 months & over) (As from 1 September, 2024- £4.00 per female) Paper registrations: £3.00/female (under 12 months) (As from 1 September, 2024 – 4.00/female (12 months & over)
Individual ram registration	£20.00 per head (same for Grassroots & Paper registrations)
Sale entry fee for Rams at May Fair	£10.00 per head
Sale entry fee for individual females at May Fair	£5.00 per head

Pens of females at May Fair	£10.00 per vendor
Approved Ewe Inspection Fee	£50.00
Approved Ewe inspection cost per ewe	££5.00 per ewe
COST OF TATTOOING EQUIPMENT	
Letters & Numbers (while stocks last)	£5.40 each
Blanks (while stocks last)	£2.31 each
Green paste – 2oz. tube	£6.69
SALES LIST	
Hard Back Flock Book	£30.00
Badge	£0.77
Ties	£10.55
Trailer Sticker – red logo	£1.54
Windscreen Sticker – red logo	£0.58
Beanie	£5.40
Mugs	£5.66
Caps	£6.95
Record Cards	£0.35
History of the Dorset Horn Book	£5.81
Clothing – Softshell Jacket	Adult: £35.87 Child: £34.24
Sweatshirt	Adult: £22.73 Child: £18.61
Polo Shirt	Adult: £16.67 Child: £13.78
Hoody	Adult: £25.42 Child: £21.76

Postage and packing of £3.49 will be charged on above items. All prices are plus VAT.

APPLICATION FORM FOR MEMBERSHIP
REGULATIONS FOR ENTERING THE FLOCK BOOK:

1. Applications for the Registration of Sheep are received only on the understanding that the applicant agrees to the inspection of their flock, if considered necessary by the Council, and that they agree to abide by the decision of the Council as to the eligibility of their flock for entry, and that they agree to pay the expenses of such an inspection if the Inspecting Committee decide that such a flock are not pure Dorset Horns or Poll Dorsets.
2. No flock shall be eligible for entry except such as shall be proved to be true Dorset Horns or Poll Dorsets.
3. The Council reserve the right of declining the right of any entry.

Once an application form for membership has been accepted, all members will be given a Society flock number.

The tag must include your society flock number and year letter (appropriate to the year of birth).

Please tick below which option you are choosing as appropriate, and send a cheque with the full amount with your application form. A receipt will be sent.

I HEREBY APPLY to be admitted a member of the **DORSET HORN & POLL DORSET SHEEP BREEDERS' ASSOCIATION** and agree, when accepted, to abide by the bye-laws of the Association.

Signed: Date:

Adult: **£65.00 per annum plus VAT at the current rate = £65.00 + £13.00 = £78.00**
(50% for those that join in February - £32.50 + VAT = £39.00)

Junior: **£10.00 per annum + VAT = £12.00**
(16 & under) Please state date of birth: _____

Associate Membership : **£30.00 + VAT = £36.00**

Renewal of Membership fees fall due on 1 September each year.

NAME:

ADDRESS:

..... POST CODE:

TELEPHONE: e-mail:.....

Fax: UK Flock No.....

PROPOSED PREFIX: 1st choice : 2nd choice :

(Two choices of prefix MUST be given in order for application to be presented to Council)

A prefix will not be allowed if it has already been used or is already in use. A list of prefixes is available on our website: www.dorsetsheep.org.uk, under Society and docs/forms for download.

MV ACCREDITED: YES/NO (Please delete as appropriate)

PLEASE FILL IN DETAILS OF SHEEP AND QUESTIONNAIRE OVERLEAF

When completed please tear out and return to The Breed Secretary, Dorset Horn & Poll Dorset Sheep Breeders' Office, Agriculture House, Acland Road, Dorchester, Dorset DT1 1EF

DORSET HORN/POLL DORSET FLOCK established by the purchase of:

Quantity	Horn/Poll	Rams/ewes/hogs	From

The Flock now consists of : Ewes Hoggets Rams & Ram Lambs

N.B. ONLY ANIMALS WHICH ARE TAGGED IN THEIR EARS WITH THE APPROPRIATE FLOCK NUMBER AND YEAR LETTER ARE ELIGIBLE FOR REGISTRATION.

Where did you hear about the Dorset Horn and Poll Dorset Society?:

- Website: YES/NO
- May Fair: YES/NO
- Breed Stand at Agricultural Show: YES/NO
- If Yes, which show: _____
- Newspaper/Magazine: YES/NO
- If Yes, which one: _____
- Word of mouth: YES/NO
- Other (please specify): _____



APPLICATION FOR INSPECTION OF PUREBRED UN-REGISTERED EWES FOR ENTRY TO THE FLOCK BOOK

NAME:

ADDRESS:

.....

POST CODE: **TEL. NO.:**

UK Flock No.: **e-mail:**

NUMBER OF EWES FOR INSPECTION **HORN/POLL**

IF YOU ARE AN *EXISTING* MEMBER PLEASE STATE YOUR :

PREFIX : **FLOCK NUMBER:**

IF YOU ARE *NOT* A MEMBER AND IF YOUR EWES ARE APPROVED WHAT IS YOUR PROPOSED PREFIX?

1ST CHOICE : **2ND CHOICE :**

Two choices of prefix MUST be given.

A prefix will not be allowed if it has already been used or is already in use. A list of prefixes is available on our website: www.dorsetsheep.org.uk, under Society and docs/forms for download.

INSPECTION

All sheep to be inspected must be female and over 6 months of age. They will be inspected by an Association Inspector and will be required to be of a high standard. If accepted they will be ear-tagged and known as Approved Sheep.

Progeny from approved ewes must be sired by a registered Dorset ram, but will not be eligible for entry into the main flock book. These will be known as “G1” females/males, and when registered will be issued with a red certificate, and “G1” and “does not qualify for export” stamped on the certificate. Progeny from “G1” females/males will then be eligible for registration and entry in to the main flock book.

Ear-tagging will be carried out by the Association’s Inspector at the owner’s risk. Please make sure clean water and disinfectant are available.

Fee: £50 + VAT inspection fee mainland UK & Northern Ireland (other areas – prices on application), plus £5 + VAT per ewe must be paid in advance and sent with this application form. We will issue an invoice/receipt for this. In the case of rejection, or, if for any reason any ewes to be inspected are unavailable, the fee is non-refundable.

Once the inspection has taken place you will be given a Society flock number.

The progeny’s tag must include your society flock number and year letter (appropriate to the year of birth).

New Flocks which are approved following inspection will have their first year’s subscription to the Association and the Flock Book free of charge.

