

CHILD INFORMATION
(KEEP WITH CAR SEAT AT ALL TIMES IN CASE OF EMERGENCY)

NAME:

.....

DATE OF BIRTH (DD/MM/YYYY):

.....

ADDRESS:

.....

.....

.....

ALLERGIES/MEDICAL CONDITIONS:

.....

.....

.....

EMERGENCY CONTACT 1:

NAME:

.....

PHONE NUMBER:

.....

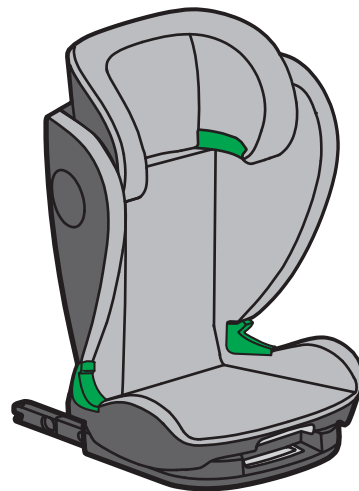
EMERGENCY CONTACT 2:

NAME:

.....

PHONE NUMBER:

.....

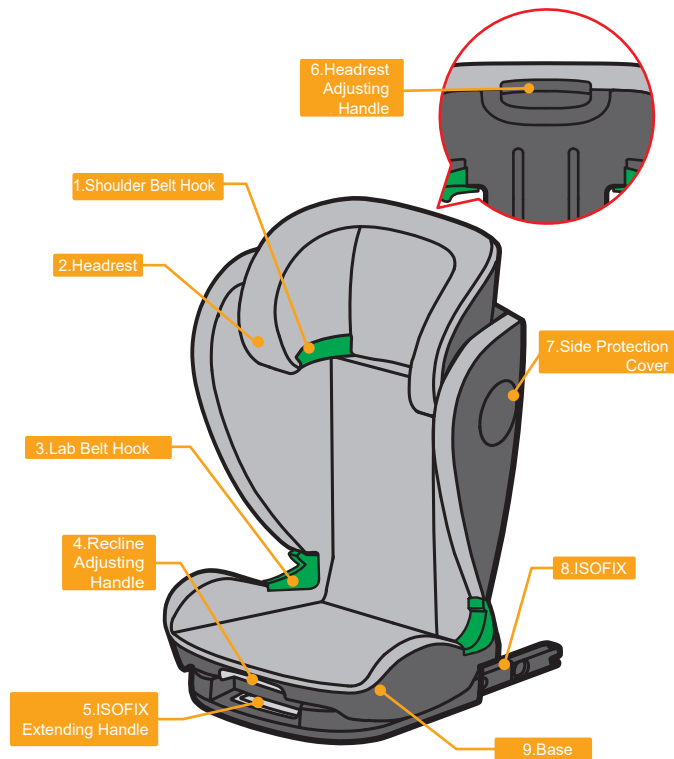


NOVA i-Size

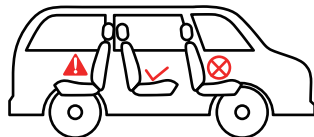
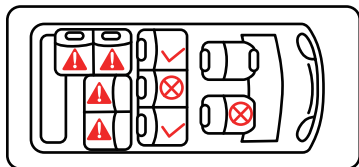
EST - 19

Instruction Manual

1. To ensure the safety and proper functionality of the Enhanced Child Restraint System, it is essential to appropriately position and install the rigid items and plastic parts. These components should be carefully placed to prevent any possibility of entanglement with a movable seat or getting caught in a vehicle door during regular use.
2. Ensure that all straps securing the restraint to the vehicle are properly tightened. Confirm that any support legs are in direct contact with the vehicle floor. Adjust any straps or impact shields restraining the child to fit snugly against their body. Additionally, make sure that the straps are free from any twists.
3. Ensuring that the lap strap is worn low down is of utmost importance.
4. It is necessary to replace the Enhanced Child Restraint System if it has been exposed to significant forces during an accident.
5. Making any modifications or additions to the device without obtaining approval from the Type Approval Authority is unsafe. Similarly, failing to closely follow the installation instructions provided by the manufacturer of the Enhanced Child Restraint System can also pose a risk.
6. Always avoid leaving children unattended in their Enhanced Child Restraint System.
7. Ensure that any luggage or objects that could potentially cause injuries in the event of a collision are securely fastened or properly secured.
8. Ensure that the Enhanced Child Restraint System shall not be used without the cover.
9. Ensure that you do not replace the cover of the Enhanced Child Restraint System with any other cover that is not recommended by the manufacturer. The cover is an essential component of the restraint system and plays a crucial role in its performance.



1 Use in car

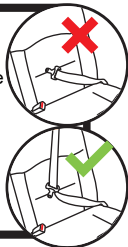


You can use your child car seat according to the pictures

⚠ WARNING

The use of the 2-point belt system is prohibited. Please ensure that you utilize the 3-point belt system for installation.

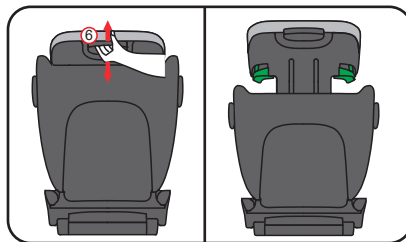
European Union ECE 16 or the same standard using this child seat. Ensure that the car belt conforms to the European Union ECE 16 standard or an equivalent standard.



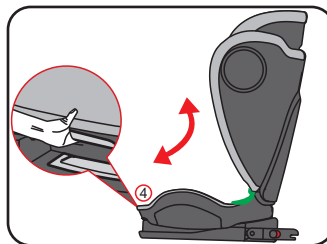
✓ : Suggested vehicle seat ✗ : Do not suggest vehicle seat

⚠ : forbidden vehicle seat

2 Headrest and child seat angle adjustment

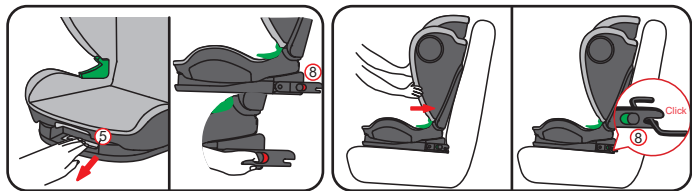


Gently move the Headrest adjusting handle ⑥ up and down to the desired position for the child's needs.



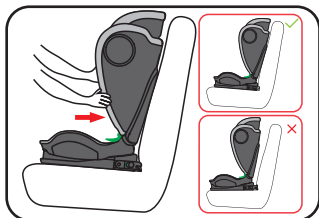
By pulling the recline adjusting handle ④, you can easily adjust the seat back angle to the desired position for the child's needs.

3 Fastening the ISOFIX



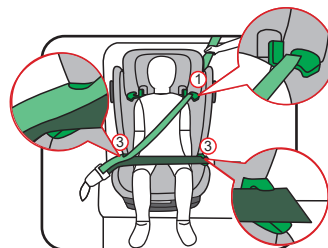
Step 1: Pull the ISOFIX extending handle ⑤, this action will extend the ISOFIX from the base

Step 2: Push the seat back until you hear a distinct click. Simultaneously, observe the indicator, which will change to green.



Step 3: Proceed by pushing and shaking the seat back to ensure a secure contact with the vehicle seat back. Confirm that the indicator remains green once the installation is completed.

4 The installation processes – size range 100-150



Method 1: With ISOFIX+3 point safety belt

1. followed the step 1 to step 3 described in item 3 listed above
2. place your child in the child seat, adjust the headrest to fit the child's shoulder; pull out 3 point safety belt around child, make the shoulder belt through the shoulder belt hook ①, lead the lab belt above the child's hip, at the right position of lab belt hook ③, make sure it is tight and not twisted.

Method 2: 3 point safety belt

1. place your child in the child seat, adjust the headrest to fit the child's shoulder; pull out 3 point safety belt around child, make the shoulder belt through the shoulder belt hook ①, then insert the safety belt to buckle until you hear a click, tighten 3 point safety belt, make sure it is tight and not twisted.



Notice

Ensure that your vehicle is equipped with the necessary ISOFIX anchor points. Using any front protection is prohibited unless there is explicit instruction provided within the user manual.

Ensure that the safety belts are utilized in accordance with the instructions provided in the manual.

5 Remove the cover



To remove the cover from the child seat, start by releasing the elasticated edges of the cover from the seat.

6 Cleaning

When cleaning the seat, you can sponge the plastic parts using mild detergent and warm water. However, it is important to avoid using chemical cleaners or bleach on the harness straps. Ensure that the seat is thoroughly dried before using it again.



It is essential to use the original fabric cover as it plays a crucial role in the proper functioning of the system. If you need to replace the fabric cover, please consult the retailer, agent, manufacturer, or other authorized sources for obtaining the appropriate new fabric covers.

To clean the fabric cover, you can use a mild detergent and wash it in the washing machine at approximately 30 degrees. Please refer to the washing label on the fabric cover for specific instructions. Avoid using water temperatures exceeding 30 degrees, as this may cause color fading. Do not attempt to dry the fabric cover by squeezing or using a washing machine, as it may disassemble the sponge within the fabric. When washing the plastic components of the child seat, soap can be used, but refrain from using strong cleaners such as solvents.

7 Warranty

The warranty is valid for 24 months from the date of purchase and applies only to the original buyer. It cannot be transferred to another party. This warranty is applicable only to products without any existing warranty. If the product has any defects, the consumer should return it to the retailer along with a complete and detailed description of the problem, as well as a valid proof of purchase. The retailer will then forward the product to the manufacturer. Please note that the product cannot be replaced or returned after it has undergone maintenance. The warranty does not extend beyond the specified period. The manufacturer is not responsible for any damage to the product, except in cases of quality-related issues.



Below situations cannot warranty

1. Please ensure that you provide the complete and valid purchasing receipt to the manufacturer.
 2. It is important to strictly follow the instruction manual when using this product. Any operational or maintenance errors may result in product defects.
 3. Exercise caution and avoid careless handling, as it may lead to product defects.
 4. Please make sure that the product's series number label remains intact and legible. Any damage or erasure of the label may affect the warranty. Please note that normal wear and tear during daily use of the product is not covered by the warranty.
- The warranty will only apply if the product's issue aligns with the specified

Instruction Manual

We are delighted to provide you with our child car seat, which will ensure your child's safety throughout this new stage of their life. To ensure your child is protected correctly, it is imperative that this child car seat is always used and installed in accordance with the instructions provided herein. If you have any further inquiries about the usage of this child car seat, please reach out to the retailer or manufacturer.

BABY CAR SEAT GROUP

  **i-Size Booster Seat**
100 cm - 135 cm
Specific Vehicle
Booster Seat
135 cm - 150 cm



Contents

| | |
|---------------------------------------|--------------|
| Safety instruction | 03 |
| Know your child seat | 04 |
| Applicability | 05 |
| Seat adjustment | 06 |
| Installed inside the car | 07-08 |
| Child seat maintenance | 09-10 |