



COZY N SAFE®
MeRLiN

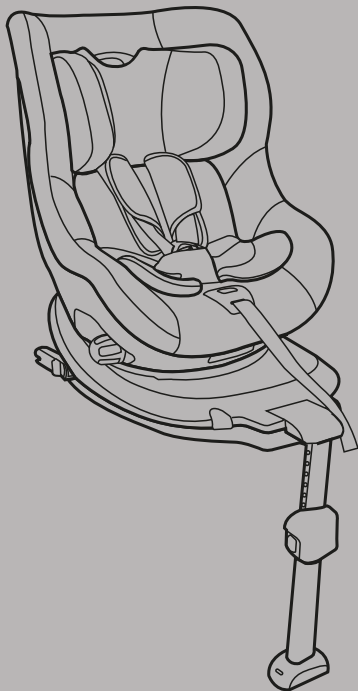


INSTRUCTION MANUAL

Birth – 18kg (Approx. Birth – 4 years)

Model: EST-101

Group: 0+/1



Please read this manual carefully before use

COZY SAFE



CONTENTS

Thank you for purchasing the Merlin car seat.

User instructions

We are pleased that the Merlin will be accompanying your child safely through this new stage of their life.

In order to protect your child correctly, the Merlin must always be used and installed as described in these instructions. Please keep this instruction manual in a safe place. If you have any other questions regarding its use, please contact us.

1. Important Notice.....	01
2. Features.....	03
3. The attention for car using.....	05
4. The adjustment and using of the child car seat.....	05
4-1 Recline position adjustment.....	05
4-2 Harness adjustment.....	06
4-3 Headrest adjustment.....	07
4-4 Buckle adjustment.....	07
4-5 ISOFIX installation and removing.....	08
4-6 Support leg installation and adjustment.....	09
4-7 Infant insert using.....	09
4-8 Removing and refitting the cover.....	10
5. Installation.....	11
5-1 Rearward facing.....	11
5-2 Forward facing.....	12
5-3 Change groups.....	12
6. Side facing installation.....	14
7. Cleaning and maintenance.....	14
8. Notice.....	15

COZY SAFE



1. Important Notice:

1. This child car seat is suitable for children with a weight less than 18kg.
2. Please get the instruction manual from the compartment in the back cover of the child seat, and read carefully.
3. Please read carefully before installation, serious injury will occur if installed incorrectly. The manufacturer won't take responsibility for any risks if the seat is not installed as per the instruction manual.
4. Never use the child car seat without cover. Never use any cover which is not recommended by the manufacturer to replace an old cover because the cover constitutes an integral part of the child car seat performance. Keep away from sunlight, otherwise it may be too hot for child's skin.
5. Never place the child car seat in a vehicle seat with an active airbag.
6. The child car seat should be changed when it has been subject to violent stress in an accident.
7. Please ensure all passengers in the car use a safety belt, goods in car must be fixed, otherwise the passengers and goods may injure the child when in emergency brake situation.
8. Ensure that the buckle is not in a semi-locked status. Always confirm the child car seat is locked before using in case of emergency the child can be taken out quickly.
9. Do not make any changes, additions or change the way of harness system in the child car seat, otherwise this could seriously affect the security and functionality.
10. The child should not be left in the child car seat alone.
11. Keep the child seat away from corrosive substances.
12. Always keep the child car seat secured in the vehicle even when it is unoccupied. Ensure that children are not left in their child car seat un-attended.
13. Do not use a second-hand child car seat.
14. Please ensure that any lap strap is worn low down, so that the pelvis is firmly engaged.
15. Any straps holding the child car seat to the vehicle should be tight. Any straps restraining the child should be adjusted to be suitable to the child's body. Ensure that straps are not twisted.

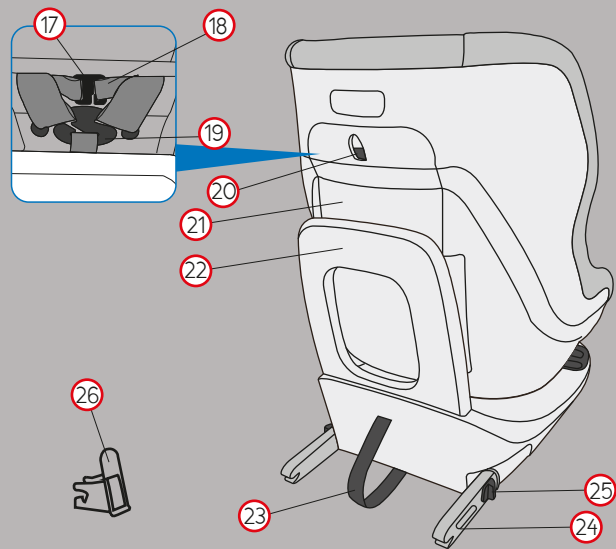
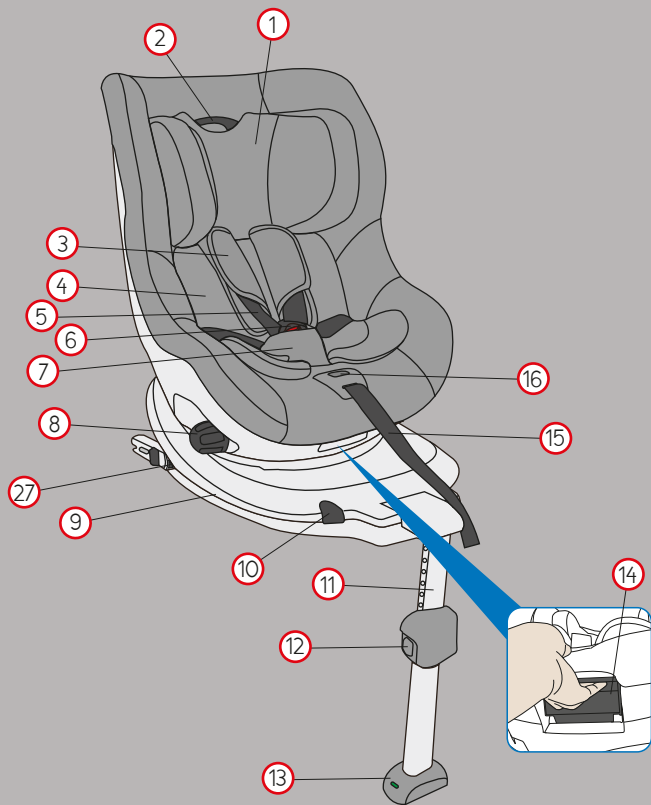
16. If you have any questions about using and installing the child seat, please contact our customer services team.
17. Do not to use any load bearing contact points other than those described in the instructions and marked on the child restraint.
18. Do not use forward-facing child car seat when child weighs less than 9kg.
19. The instructions can be stored in the child car seat for its life period, and please take good care of the instruction manual.
20. The rigid items and plastic parts of a child restraint must be so located and installed that are not liable, during everyday use of the vehicle, to become trapped by a movable seat or in a door of the vehicle.

Product Description

Group	Installation Methods	Approval type	The scope of application
0+	ISOFIX	Semi-Universal	0-13KG
I	ISOFIX	Semi-Universal	9KG-18KG



2. Features



NO.	PART	NO.	PART	NO.	PART	NO.	PART
1	Headrest	2	Headrest adjustment handle	3	Shoulder pad	4	Infant insert
5	Shoulder straps	6	Harness buckle	7	Buckle pad	8	Recline knob
9	Car seat base	10	Second lock button for group 0	11	Support leg	12	Support leg adjustment button
13	Support leg indicator	14	Rotation handle	15	Adjustment strap	16	Harness Adjusting button
17	Connector of shoulder pad	18	Shoulder pad strap	19	Harness yoke	20	Instruction cabin cover button
21	Instruction cabin cover	22	Rebound board	23	ISOFIX adjustment strap	24	ISOFIX
25	ISOFIX release button	26	ISOFIX insert guider	27	ISOFIX second lock button		

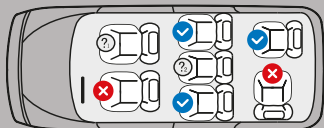


3. The attention for car using

! Danger! DO NOT use on a passenger seat with an active airbag. If hit by the airbag, death or serious injuries can occur.



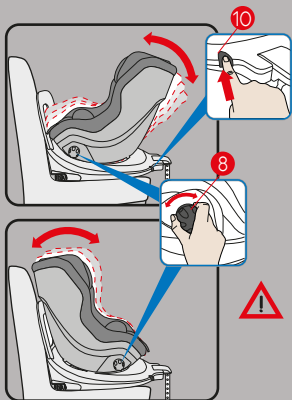
In order to properly protect your child. Please read the instructions carefully.



? DO NOT use on a passenger seat with an active airbag.

4. The adjustment and using of the child car seat

4-1 Recline position adjustment



Change the recline positions by turning the recline knob **8**. when you would like to turn to recline position **4** (the most reclined position), please press the second lock button **10** while turning the recline knob **8**.



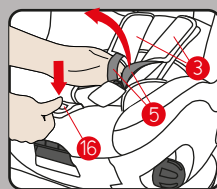
Caution:

1. When the child weight is less 13kg (group 0+), rearward facing, only the recline position **4** is suitable.
2. When the child weight is 9-18kg (group I), rearward facing, only the recline position blue 1,2,3 are suitable.
3. When the child weight is 9-18kg (group I), forward facing, only the recline position red 1,2,3 are suitable.

COZY SAFE



4-2 Harness adjustment



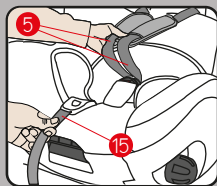
Loosen: press adjusting button **16** and at the same time pull both shoulder straps **5** forwards (Do not pull on the shoulder pads **3**).



Caution: Adjusting button **16** with mis-operation function, please operate correctly according to the picture.



Tighten: Pull on the adjustment strap **15** until the harness lies flat and is close against your child's body.



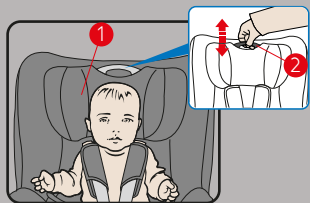
Caution:

Grasp both shoulder straps **5** by one hand (with index finger and middle finger), and pull the adjustment strap **15** forwards with the other hand slowly, when the hand holding the shoulder straps comes into contact with the child's body then stop pulling the adjustment strap **15**.

COZY SAFE



4-3 Headrest adjustment

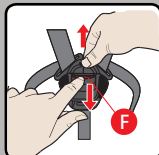
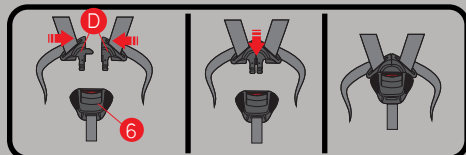


Pull up: Pull the adjusting handle 2 of the headrest upwards.

Caution:
Please loose the should straps 5 before adjust the headrest 1 (See details 4-2).

Push down: Push the adjusting handle 2 of the headrest downward.

4-4 Buckle adjustment

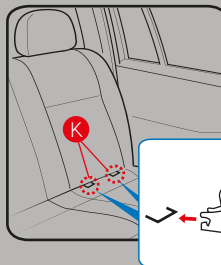


1. Guide the two buckle latches D together and engage them before putting them into the harness buckle 6, this should make a clicking noise. Pull on the shoulder straps 5 until the harness lies flat and is close against your child's body. (See details 4-2 for how to adjust shoulder strap)

2. Press red button F to release the buckle.

Caution:
Please make sure the shoulder straps 5 are not crossed and twisted.

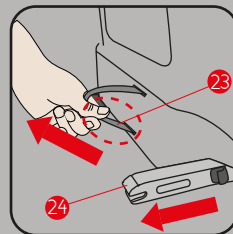
4-5 ISOFIX installation and removing



ISOFIX installation

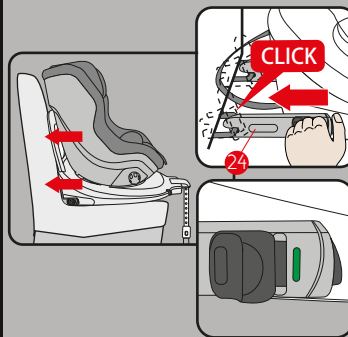
1. If your vehicle is not equipped with the ISOFIX insert guides as standard, clip the two insert guides 26 which are included with the seat with the cut-out facing upwards onto the two ISOFIX attachment point K of your vehicle.

TIP: The ISOFIX attachment points K are located between the surface and the backrest of the vehicle seat.



2. Pull the grey fabric loop 23 to pull out both locking arms 24 and make sure the ISOFIX has been completely pulled out, there will be a clicking noise during movement.

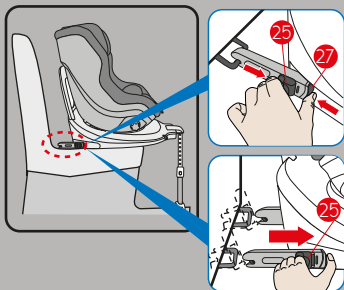
Caution:
Please be aware when pulling the lower end of strap. (see picture marked with red circle)



3. Insert the ISOFIX 24 using the ISOFIX insert guides, push both sides until there is a click.
4. Push the child seat with a substantial amount of force as far as it will go.

Caution: The locking arms are only correctly engaged if both of the ISOFIX indicators are completely green.

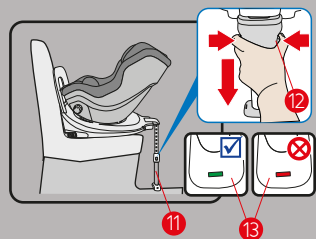
5. Shake the child car seat to make sure it is safely attached and re-check the ISOFIX indicator to make sure that both of them are completely green.



Isofix Removing from Vehicle Seat

1. Press Isifix second lock button 27 and Isifix release button 25 together, press Isifix release button 25 towards the red arrow direction until Isifix 24 separate from the vehicle seat.
2. Press both Isifix 24 until it retracts into car seat base.

4-6 Support leg installation and adjustment

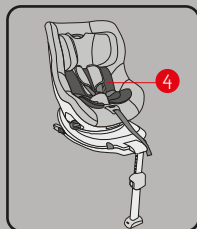


Support leg adjustment and installation pull the support leg as far away from the back of the child car seat as possible. Push both adjustment buttons 12 and pull out the support leg 11 until it rests firmly on the floor of the vehicle.

Caution: the support leg indicator 13 must be completely green.

TIP: The support leg should be pulled down more if the indicator is not green.

4-7 Infant insert using



The infant insert 4 should be used when infant body weight is below 13kg.

TIP: The infant insert ensures that your baby's spine is supported during travel.

COZY SAFE

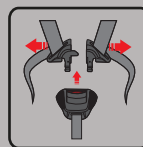


4-8 Removing and Refitting the cover

Cover removing

1. Turn the child car seat into the forward facing position and recline to the upright position. (See details 4-1), raise the headrest to the highest position. (See details 4-3) and take out the infant insert.
2. Open the harness buckle (Pic1), remove the shoulder pad (Pic 2) and buckle pad (Pic 3).

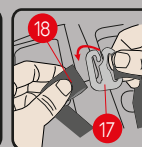
TIP: Split the shoulder pads before removing, then take down the shoulder pad strap 18 from connector 17 and pull the shoulder pads forwards.



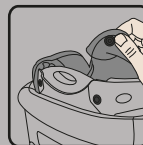
Pic 1



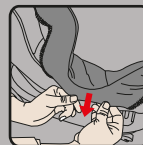
Pic 2



Pic 3



Pic 4

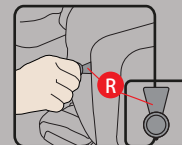
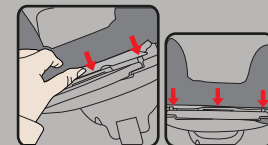


Pic 5

3. Pull the headrest to highest position, release the button (pic 4), and take off the headrest cover carefully.
4. Pull out the cover carefully (pic 5), and take off the cover.

Cover refitting

1. Put the child seat into the most upright position, and pull the headrest to the top, then put on the headrest cover on and insert the plastic sheet into the hole between plastic and EPS and button up.
2. Put on the cover on the shell carefully.
3. Fitting the shoulder pad and buckle pad.



TIP: The round plate R will be helpful when fitting cover. This can be found with the instruction manual.

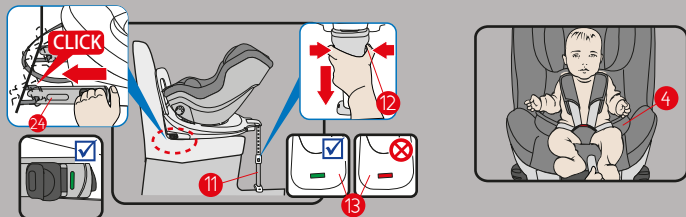
COZY SAFE



5 Installation

TIP: The child car seat should always be secured in the car via the ISOFIX anchoring, even when there is no child in the seat.

5-1 Rearward facing



Suitable for group 0+: weight 0–13kg (approx. birth–15 months)

1. Installed ISOFIX 24 with vehicle seat (See details in 4–5), make sure it is completely engaged and close to vehicle seat.
2. Pull out support leg 11 until it rests firmly on the floor of the vehicle. The indicator must be green to ensure this is done correctly.
3. Turn the child car seat to the most reclined position (See details 4–1)
4. Have your child lay down in the child car seat.

Suitable for group 1: weight 9–18kg (approx. 9 months–4 years)

1. Installed ISOFIX 24 with vehicle seat (See details in 4–5), make sure it is completely engaged and close to vehicle seat.
2. Pull out support leg 11 until it rests firmly on the floor of the vehicle. The indicator must be green to ensure this is done correctly.
3. Turn the child car seat to the recline position blue 1,2,3 (See details 4–1)
4. Have your child sit down in the child car seat.



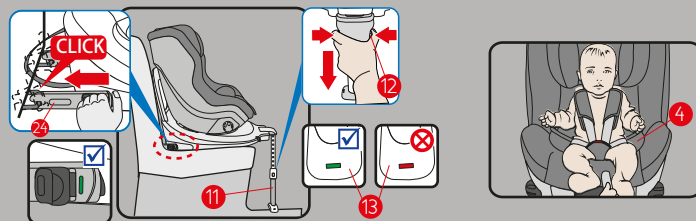
Caution:

1. Check the ISOFIX, support leg and harness system are properly working, make sure your child is always securely fastened.
2. The ISOFIX locking arms are only correctly engaged if both of the ISOFIX indicators are completely green. The support leg indicator 13 must be completely green.
3. Ensure no cross or twist of the harness system.
4. The infant insert 4 should be used when infant body weight is below 13kg.
5. ISOFIX insert guides are very helpful for ISOFIX installation 26.

COZY SAFE



5-2 Forward facing



Suitable for group 1: weight 9–18kg (approx. 9 months–4 years)

Installed ISOFIX 24 with vehicle seat (See details in 4–5), make sure it is completely engaged and close to vehicle seat.

2. Pull out support leg 11 until it rests firmly on the floor of the vehicle. The indicator must be green to ensure this is done correctly.
3. Turn the child car seat to the recline position red 1,2,3 (See details 4–1)
4. Have your child seat down in the child car seat.



Caution:

1. Check the ISOFIX, support leg and harness system are properly working, make sure your child is always securely fastened.
2. The ISOFIX locking arms are only correctly engaged if both of the ISOFIX indicators are completely green. The support leg indicator 13 must be completely green.
3. Ensure no cross or twist of the harness system.
4. ISOFIX insert guides are very helpful for ISOFIX installation 26.

5-3 Change groups

The child car seat has a safety button 10 which must be pressed when changing between group 0+ and group 1. The safety button 10 prevents the child seat being used in the wrong group by mistake.

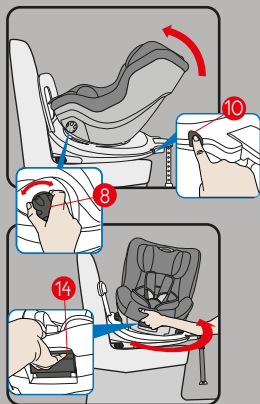


Caution: Rearward facing is suitable for group 0+ and group 1, forward facing only suitable for group 1.

COZY SAFE



A) Rotation function (from rearward to forward facing)



1. Grasp the turning knob **8** whilst pressing the safety button **10** simultaneously. turn to the lowest recline position.

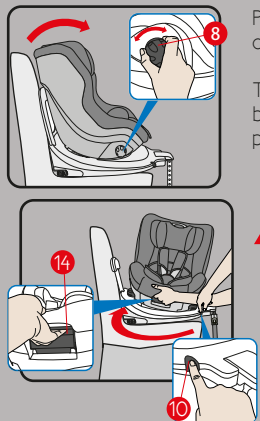
2. Pull the rotation handle **14** and turn the seat into the direction of travel.



Caution:

1. Before every journey, make sure that the rotating part of the child seat is fully engaged by trying to turn the seat around in both directions.
2. Do not use the child seat forward facing when your child is below 9 kg.

B) Rotation function (from forward to rearward facing)



Pull the rotation handle **14** and turn the seat into the correct direction of travel.

TIP: Grasp the turning knob **8** whilst pressing the safety button **10** simultaneously. change to the lowest recline position for group 0+.



Caution:

Before every journey, make sure that the child seat is in the right group and configuration for your child.

COZY SAFE



6. Side facing installation



This child car seat rotates 360° which makes it easier to get your child into or out of the child seat (Easy access function).



Pull the rotation handle **14** and turn to 90° and into easy access mode.



Caution:

When the child seat in group 0+ mode, it can be only turned to 90°. when the child seat in group I mode, it can be turned 360°

7. Cleaning and Maintenance

Important:

The cover is a safety feature. Never use the child car seat without it, don't put your child's safety at risk by using other replacement covers, they could stop the child seat from protecting your child as well as it should.

Washing instruction:

The cover is removable and washable at 30°C, line dry only.



Machine wash, cold



Do not bleach



Do not dry clean



Do not tumble dry



Do not iron

COZY SAFE



8. Notice 1

1. This is an ISOFIX CHILD RESTRAINT SYSTEM. It is approved to Regulation No. 44, 04 series of amendments for general use in vehicles fitted with ISOFIX anchorages systems.
2. It will fit vehicles with positions approved as ISOFIX positions (as detailed in the vehicle handbook), depending on the category of the child seat and of the fixture.
3. The mass group and the ISOFIX size class for which this device is intended is: Group 0+ (birth – 13kg) D, group I (9–18kg) B1.

Notice 2

This Child Restraint is classified for "Semi-universal" use and is suitable for fixing into the seat positions of the following cars:

<u>CAR</u>	<u>FRONT</u>	<u>REAR</u>	
		<u>Outer</u>	<u>Centre</u>
(See the car list)	Yes	Yes	No

Seat positions in other cars may also be suitable to accept this child restraint. If in doubt, consult either the child restraint manufacturer or the retailer.

Cozy N Safe

Oxford Street, Wolverhampton, West Midlands, WV14 7DP, U.K.

Tel: +44 (0) 1902 494905

Fax: +44 (0) 1902 490211

Email: enq@cozynsafe.com

Website: www.cozynsafe.com

COZY N SAFE



COZY N SAFE

